

NISSAN INTELLIGENT MOBILITY™

Nissan Intelligent Mobility guides everything we do. We're using new technologies to transform cars from mere driving machines into assistants. Together the journey is more confident, connected, and exciting. Whether it's cars that assist in the driving task, or highways that charge your EV as you go along, it's all in the very near future. And it's a future already taking shape in the Nissan you drive today.



Innovation
that excites

2019 VERSA® SEDAN

SEE VERSA® SEDAN COME TO LIFE

Go to NissanUSA.com and find an interactive brochure for Versa Sedan and every Nissan in the lineup. Available on desktop, smartphone, or tablet, it's the full product story – including demos, videos, and complete info on trims, colors, and accessories.



¹2018 EPA Fuel Economy Estimates 31 City/39 Highway MPG for Versa® Sedan 1.6-L with Xtronic CVT. Actual mileage may vary with driving conditions – use for comparison only. 2019 Fuel Economy Estimates not available at time of printing. ²RearView Monitor may not detect every object and does not eliminate blind spots or warn of moving objects. See Owner's Manual for safety information. ³Cargo shown for display purposes only. Cargo and load capacity limited by weight and distribution. Always secure cargo. ⁴Feature availability is dependent on vehicle model, trim level, packaging and options. Compatible connected device may be required and feature availability may be dependent on device's capability. Refer to connected device's owner's manual for details. Late availability for some features. **Driving is serious business and requires your full attention.** Only use features and connected devices when safe and legal to do so. Some features, including automatic crash notification and SOS, are dependent upon the telematics device being in operative condition, its ability to connect to a wireless network, compatible wireless network availability, navigation map data and GPS satellite signal receptions, the absence of which can limit or prevent the ability to reach Customer Care or receive support. GPS mapping may not be detailed in all areas of reflect current road status. Never program GPS while driving. Only use Remote Engine Start and Remote Horn features in accordance with any laws, rules or ordinances in effect in your vehicle's location. Some services and features are provided by independent companies not within Nissan's control. **Should service provider terminate or restrict service or features, service or features may be suspended or terminated without notice or with no liability to Nissan or its partners or agents.** Services and features may require compatible cellular network provided by independent companies not within Nissan or its partners' or agents' control. Cellular network signal strength may vary and may not be available in all areas or at all times. Services and features may not function if cellular network is unavailable, restricted, or terminated. Nissan and its partners or agents are not responsible for associated costs or other third party charges that may be required for continued operation due to cellular network unavailability, restriction, or termination (including equipment replacements/upgrades, if available, or roaming charges on alternative networks). Technology is evolving, and changes by independent companies are not within Nissan's or its partners' or agents' control. Enrollment, owner consent, personal identification number (PIN), and subscription agreement may be required to receive full suite of features and services. Trial periods (if applicable) begin on the date of vehicle purchase or lease of a new Nissan. Trial periods may be subject to change at any time and may be subject to early termination without notice. Required subscriptions may be sold separately for each available feature or service after trial period ends, and may continue until you call service provider to cancel. Installation costs, one-time activation fee, other fees and taxes may apply. Fees and programming subject to change. Feature may be subject to age restrictions in some areas. Subscriptions governed by service provider's subscription agreement, terms and conditions and privacy statements available at service provider's website. Text rates or data usage may apply. The Nissan names, logos and slogans are trademarks owned by or licensed to Nissan Motor Co. Ltd. or its North American subsidiaries. Other trademarks and trade names are those of their respective owners. For important safety information, system limitations, and additional operating and feature information, see dealer, Owner's Manual, or NissanUSA.com/connect/important-information. Terms and conditions of Subscriber Agreement apply. NissanConnect EV features are provided by Nissan North America. Sirius XM Connected Vehicle Services Inc. ("Sirius XM") partners with Nissan North America to provide NissanConnect Services powered by SiriusXM. All stated terms, disclosures and limitations of liability associated with connected vehicle services extend to Sirius XM and its affiliate, Sirius XM Radio Inc. SiriusXM is a registered trademark of Sirius XM Radio Inc. ⁵Never program while driving. GPS mapping may not be detailed in all areas or reflect current road status. ⁶Use the Text Messaging feature after stopping your vehicle in a safe location. If you have to use the feature while driving, exercise extreme caution at all times so full attention may be given to vehicle operation. Compatible smartphone required. Text rates and/or data usage may apply. ⁷Driving is serious business and requires your full attention. If you have to use the connected device while driving, exercise extreme caution at all times so full attention may be given to vehicle operation. ⁸Air bags are only a supplemental restraint system. Always wear your seat belt. Rear-facing child restraints should not be placed in the front-passenger's seat. All children 12 and under should ride in the rear seat properly secured in child restraints, booster seats, or seat belts according to their size. Air bags will only inflate in certain accidents. See Owner's Manual for safety information. ⁹Brake Assist cannot prevent all collisions and may not provide warning or braking in all conditions. Driver should monitor traffic conditions and brake as needed to prevent collisions. See Owner's Manual for safety information. ¹⁰Vehicle Dynamic Control cannot prevent collisions due to abrupt steering, carelessness, or dangerous driving technique. It should remain on when driving, except when freeing the vehicle from mud or snow. See Owner's Manual for safety information. ¹¹Tire Pressure Monitoring System is not a substitute for regular tire pressure checks. See Owner's Manual for safety information. ¹²Vehicle must be on for the Easy-Fill Tire Alert to operate. ¹³Genuine Nissan Accessories are covered by Nissan's Limited Warranty on Genuine Nissan Replacement Parts, Genuine NISMO® 5-Tune Parts, and Genuine Nissan Accessories for the longer of 12 months/12,000 miles (whichever occurs first) or the remaining period under the 3-year/36,000-mile (whichever occurs first) Nissan New Vehicle Limited Warranty. Terms and conditions apply. See dealer, Warranty Information Booklet, or parts.NissanUSA.com for details. ¹⁴For a period of 36 months/36,000 miles from the date the vehicle is delivered to the first retail buyer or otherwise put into use, whichever is earlier. Android Auto™ is a trademark of Google, Inc. Apple CarPlay™ and Apple Maps are trademarks of Apple, Inc. Bluetooth® is a registered trademark of Bluetooth SIG, Inc. Facebook® is a registered trademark of Facebook, Inc. Google Maps™ and Google Play™ are trademarks of Google Inc. HomeLink® is a registered trademark of Gentex Corporation. Pandora® is a registered trademark of Pandora Media. Siri® and Siri® Eyes Free are registered trademarks of Apple, Inc. The Sirius®, XM®, and SiriusXM® names and all related marks and logos are trademarks of Sirius XM Radio Inc. All other trademarks are the property of their respective owners. Twitter® is a registered trademark of Twitter, Inc. YouTube® is a registered trademark of Google, Inc. This brochure is intended for general descriptive and informational purposes only. It is subject to change and does not constitute an offer, representation or warranty (express or implied) by Nissan North America, Inc. Interested parties should confirm the accuracy of any information in this brochure as it relates to a vehicle directly with Nissan North America, Inc., before relying on it to make a purchase decision. Nissan North America, Inc., reserves the right to make changes, at any time, without prior notice, in prices, colors, materials, equipment, specifications, and models and to discontinue models or equipment. Due to continuous product development and other pre- and post-production factors, actual vehicle, materials and specifications may vary from this brochure. Some vehicles shown with optional equipment. See the actual vehicle for complete accuracy. Availability and delivery times for particular models or equipment may vary. Specifications, options and accessories may differ in Hawaii, U.S. territories and other countries. For additional information on availability, options or accessories, see your Nissan dealer or contact Nissan North America, Inc. At NissanUSA.com, you'll find virtual product demonstrations, a way to "build your own Nissan," a dealer locator, and more information about key Nissan support services. Or if you'd prefer, call 1-800-NISSAN-3 for answers to specific questions about Versa® Sedan or any other Nissan vehicle. The Nissan names, logos, product names, feature names, and slogans are trademarks owned by or licensed to Nissan Motor Co. Ltd. and/or its North American subsidiaries. Other trademarks and trade names are those of their respective owners. **Always wear your seat belt, and please drive responsibly.** ©2018 Nissan North America, Inc. '19 Versa® Sedan. 1922540-N-6/18-60K-CG





Embrace the drive with aerodynamic style and efficiency that impresses. Connect your apps, pump your music and get comfortable in the surprisingly roomy interior. Everything you need is in reach. The 2019 Nissan Versa® Sedan. Tech that moves you.



Nissan Versa® Sedan SV Special Edition shown in Charcoal Cloth.



REARVIEW MONITOR

When you're in Reverse, a camera mounted on the rear of the vehicle helps you see what's directly behind you by displaying it on Nissan Versa Sedan's RearView Monitor.²



SPLIT FOLD-DOWN SEATS

An available 60/40 split fold-down rear seat gives you real flexibility carrying people and cargo. The huge pass-through means tall and wide items are always welcome along for the ride.³



IMPRESSIVE FUEL ECONOMY

Wouldn't it be cool if you could get excellent fuel economy in a roomy car that's fun to drive? With Versa[®] Sedan, we got there by developing everything from exterior aerodynamics that whisper through the wind to an advanced 1.6-liter 4-cylinder engine to a virtually gearless Xtronic CVT[®] (Continuously Variable Transmission) that maximizes efficiency and performance.

UP TO
39
MPG HIGHWAY¹

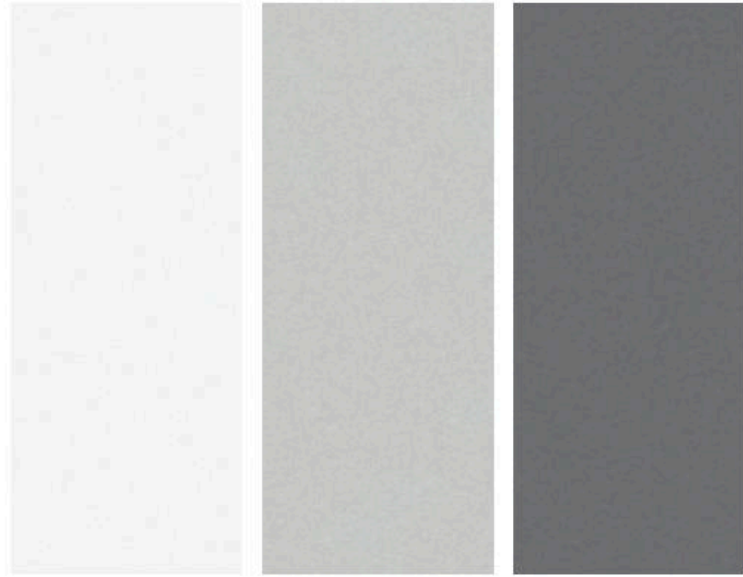
NISSAN INTELLIGENT MOBILITY™

YOUR WORLD AT YOUR FINGERTIPS

Nissan Intelligent Mobility features new tech that help keep you connected with your hands on the wheel. Equipped with Siri[®] voice control, Apple CarPlay™ brings on board your contacts, the music apps you love, Apple Maps, and more. Android Auto™ gets you where you're going with Google Maps™ as a guide and Google Play™ Music providing the soundtrack along the way.^{4,5}



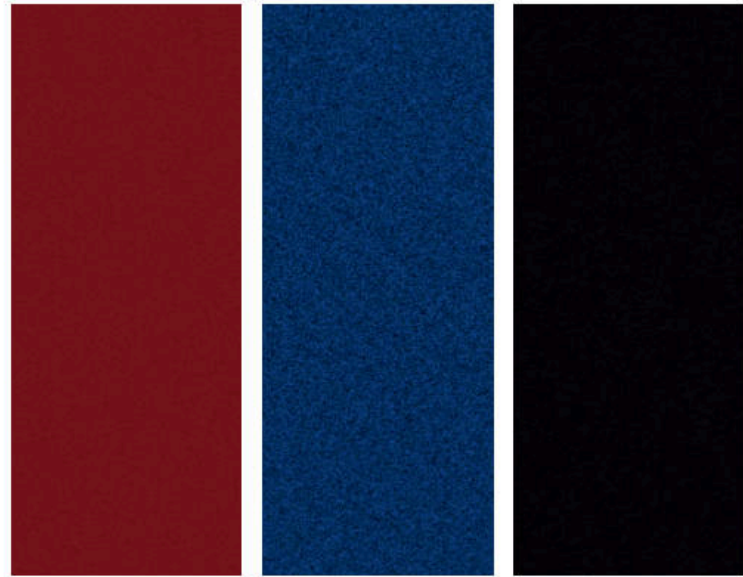
CHOOSE YOUR COLOR



Fresh Powder Brilliant Silver Metallic Gun Metallic

S S PLUS SV SV SE S S PLUS SV SV SE S S PLUS SV SV SE

CHARCOAL CLOTH



Cayenne Red Metallic Deep Blue Pearl Super Black

S S PLUS SV SV SE S S PLUS SV SV SE S S PLUS SV SV SE

CHARCOAL CLOTH

■ Standard

Nissan has taken care to ensure that the color swatches presented here are the closest possible representations of actual vehicle colors. Swatches may vary slightly due to the printing process and whether viewed in daylight, fluorescent or incandescent light. Please see the actual colors at your local Nissan dealer.

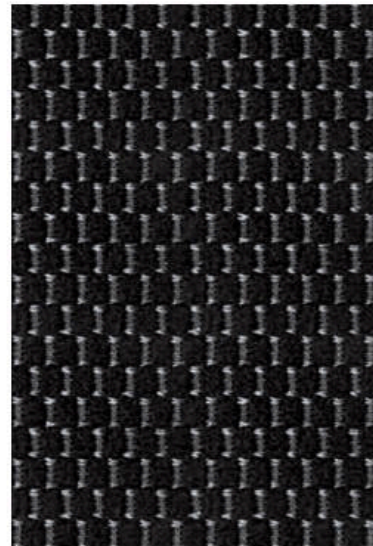
CHOOSE YOUR INTERIOR



Nissan Versa® Sedan SV Special Edition shown in Charcoal Cloth.



Charcoal Cloth
S|S Plus



Charcoal Cloth
SV|SV Special Edition

CHOOSE YOUR TRIM LEVEL

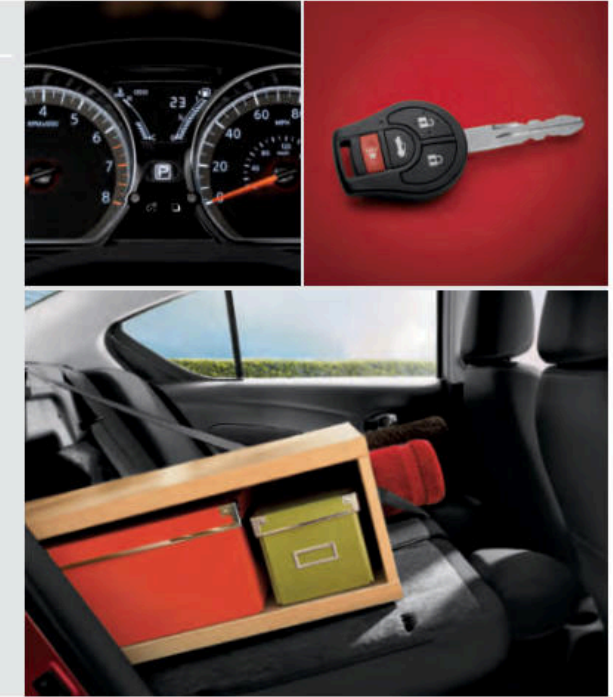
S

- 1.6-liter DOHC 4-cylinder engine
- 5-speed manual transmission
- 15" steel wheels with wheel covers
- P185/65HR15 all-season low rolling resistance tires
- Chrome-accented grille
- Front tire and center fascia air deflectors
- Dual power body-color remote-controlled outside mirrors
- RearView Monitor²
- 7.0" Touch-screen display
- Bluetooth[®] streaming audio⁴
- Hands-free Text Messaging Assistant⁶
- Siri[®] Eyes Free⁴
- USB connection port for compatible devices⁷
- Auxiliary audio input jack⁷
- Bluetooth[®] Hands-free Phone System⁴
- Four speakers
- Illuminated steering wheel-mounted audio controls
- Silver accents on steering wheel
- Trip computer
- Air conditioning
- Sun visors with extensions
- Driver's and passenger's visor vanity mirrors
- Front map light with key-linked illuminated entry
- Variable intermittent windshield wipers
- Cloth seat trim
- Six standard air bags⁸
- Anti-lock Braking System (ABS) with Electronic Brake force Distribution and Brake Assist⁹
- Vehicle Dynamic Control (VDC)¹⁰ with Traction Control System (TCS)



SV INCLUDES S PLUS EQUIPMENT PLUS:

- Chrome outside door handles
- Integrated Key with remote keyless entry
- Remote trunk release
- Power door locks with auto-locking features
- Power windows with driver's one-touch auto-down feature
- Fine Vision electroluminescent gauges
- Outside temperature display
- Two auxiliary 12-volt power outlets⁷
- 6-way manual driver's seat
- Driver's seat armrest
- Passenger seatback pocket
- Upgraded cloth seat trim
- 60/40 Split fold-down rear seats
- Cloth door trim accent
- Silver accents on dash, vent rings, shift knob and shifter surround
- Chrome inside door handles and chrome-accented center vents



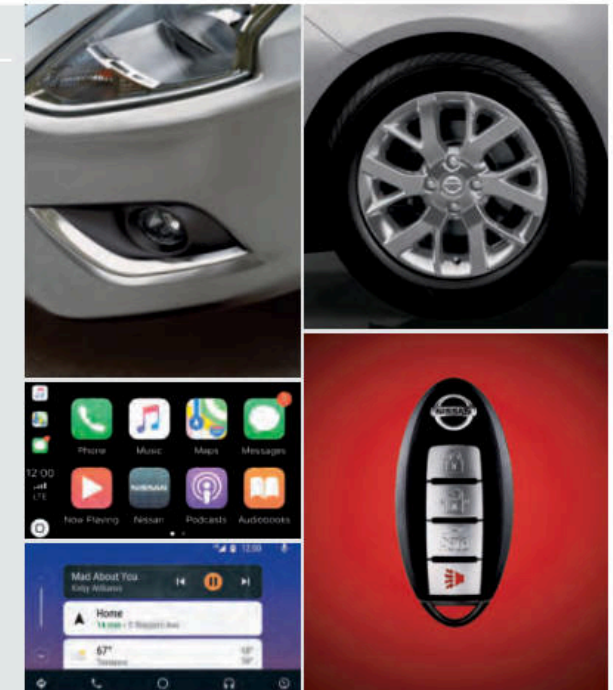
S PLUS INCLUDES S EQUIPMENT PLUS:

- Up to 39 MPG highway¹
- Standard Xtronic CVT[®] (Continuously Variable Transmission)
- Rear tire air deflectors
- Rear spoiler with integrated LED brake light
- Cruise control



SV SPECIAL EDITION INCLUDES SV EQUIPMENT PLUS:

- 15" split 6-spoke aluminum-alloy wheels
- Fog lights
- Special Edition badge
- Nissan Intelligent Key[®] with Push Button Ignition
- NissanConnect[®] 7.0" touch-screen display⁴
- Apple CarPlay^{™4}
- Android Auto^{™4}
- SiriusXM[®] Radio⁴
- Leather-wrapped steering wheel
- Piano Black center stack trim
- Tire Pressure Monitoring System (TPMS) with Easy-Fill Tire Alert^{11,12}



CHOOSE YOUR ACCESSORIES



Every Genuine Nissan Accessory is custom-fit, custom-designed and durability-tested. Each one is backed by Nissan's 3-year/36,000-mile (whichever occurs first) limited warranty (if installed by dealer at the time of purchase), and can be financed when installed by dealer at time of purchase.¹³

- A. Interior Accent Lighting**
Bring the party to your drive.
- B. Chrome Door Handle Accents**
Super-slick and oh, so shiny!
- C. Rear Spoiler and Chrome Trunk Accent**
Spoil yourself in style (sold separately).
- D. All-Season Floor Mats**
Bring on the weather.
- E. Portable Cargo Organizer³**
A place for everything, and everything in its place.
- F. Illuminated Kick Plates**
Fewer scuffs and a grand entry, every time.
- G. Carpeted Trunk Mat³**
Because being a trunk isn't easy.
- H. Frameless Auto-dimming Rearview Mirror with Universal Remote**
Perfect for dim bulbs driving with their brights on.

Additional Accessories:

- Frameless Prizm Rearview Mirror with Universal Remote
- Carpeted Floor Mats
- Nissan VTRS (Vehicle Tracking and Recovery System)⁴
- Wheel Locks
- And More

GENUINE NISSAN ACCESSORIES

TURN BRAND-NEW INTO ALL YOU

For more information and to shop online for Versa® Sedan Genuine Nissan Accessories, go to bit.ly/19versasedan-estore



Nissan Versa® Sedan SV shown in Brilliant Silver Metallic with 15" Black Aluminum-alloy Wheels, Side-window Deflectors, Rear Spoiler, and Splash Guards.

SPECIFICATIONS

Engine	S	S Plus	SV	SV SE
1.6-liter DOHC 16-valve 4-cyl. engine	■	■	■	■
— Horsepower – 109 hp @ 6,000 rpm				
— Torque – 107 lb-ft @ 4,400 rpm				
Dual injector system	■	■	■	■
Continuously Variable Valve Timing Control System (CVTCS) on intake and exhaust valves	■	■	■	■
Nissan Direct Ignition System	■	■	■	■
Platinum-tipped spark plugs	■	■	■	■
Electronic drive-by-wire throttle	■	■	■	■

Drivetrain	S	S Plus	SV	SV SE
Front engine/Front-Wheel Drive	■	■	■	■
5-speed manual transmission	■	■	■	■
Xtronic CVT® (Continuously Variable Transmission)		■	■	■

Brakes	S	S Plus	SV	SV SE
Vented front disc/rear drum brakes	■	■	■	■
Anti-lock Braking System (ABS)	■	■	■	■
Electronic Brake force Distribution (EBD)	■	■	■	■
Brake Assist ²	■	■	■	■

Suspension/Steering	S	S Plus	SV	SV SE
Independent strut front suspension with stabilizer bar	■	■	■	■
Torsion beam rear axle with integrated stabilizer bar	■	■	■	■
Vehicle-speed-sensitive electric power steering	■	■	■	■

Wheels/Tires	S	S Plus	SV	SV SE
15" x 5.5" steel wheels with wheel covers	■	■	■	
15" x 5.5" split 6-spoke aluminum-alloy wheels				■
P185/65HR15 all-season low rolling resistance tires	■	■	■	■

Exterior Features	S	S Plus	SV	SV SE
Chrome-accented multi-reflector halogen headlights	■	■	■	■
Fog lights				■
Dual power body-color remote-controlled outside mirrors	■	■	■	■
Chrome-accented grille	■	■	■	■
Black door handles	■	■	■	■
Chrome door handles			■	■
Front tire and center fascia air deflectors	■	■	■	■
Rear tire air deflectors		■	■	■
Rear spoiler with integrated LED brake light		■	■	■
Special Edition badge				■

Comfort/Convenience	S	S Plus	SV	SV SE
NissanConnect® 7.0" touch-screen display ⁴				■
7.0 touch-screen display	■	■	■	■
Apple CarPlay™ ⁴				■
Android Auto™ ⁴				■
Siri® Eyes Free ⁴	■	■	■	■

Comfort/Convenience (continued)	S	S Plus	SV	SV SE
Hands-free Text Messaging Assistant ⁶	■	■	■	■
RearView Monitor ²	■	■	■	■
Bluetooth® Hands-free Phone System ⁴	■	■	■	■
Fine Vision electroluminescent gauges			■	■
Trip computer (average MPG, current MPG, distance to empty)	■	■	■	■
Outside temperature display			■	■
Service interval reminder			■	■
Air conditioning	■	■	■	■
Integrated Key with remote keyless entry			■	■
Nissan Intelligent Key® with Push Button Ignition				■
Remote trunk release			■	■
Power door locks with auto-locking feature			■	■
Power windows with driver's one-touch auto-down feature			■	■
Tilt steering column	■	■	■	■
Cruise control		■	■	■
Variable intermittent windshield wipers	■	■	■	■
Rear window defroster	■	■	■	■
Front map light with key-linked illuminated entry	■	■	■	■
Trunk light	■	■	■	■
Front door pockets with bottle holders	■	■	■	■
Front and rear cup holders	■	■	■	■
Passenger seatback pocket			■	■
Sun visors with extensions	■	■	■	■
Passenger visor vanity mirror	■	■	■	■
Foldable assist grips	■	■	■	■
Digital clock	■	■	■	■
Auxiliary 12-volt DC power outlet (two on SV and SV SE)	■	■	■	■
Battery saver	■	■	■	■

Seating/Appointments	S	S Plus	SV	SV SE
4-way manual driver's seat	■	■		
6-way manual driver's seat			■	■
Driver's seat armrest			■	■
Cloth seat trim	■	■		
Upgraded cloth seat trim			■	■
Leather-wrapped steering wheel				■
Cloth door trim accent			■	■
60/40 Split fold-down rear seats			■	■
Silver accents on dash, vent rings, shift knob and shifter surround			■	■
Silver accents on steering wheel	■	■	■	■
Piano Black interior trim				■
Chrome inside door handles and chrome-accented center vents			■	■

Audio/Entertainment	S	S Plus	SV	SV SE
Four speakers			■	■
SiriusXM® Radio ⁴				■
Bluetooth® streaming audio ⁴	■	■	■	■

Audio/Entertainment (continued)	S	S Plus	SV	SV SE
MP3/WMA CD playback capability	■	■	■	■
Auxiliary audio input jack ⁷	■	■	■	■
USB port for compatible devices ⁷	■	■	■	■
Radio Data System (RDS)	■	■	■	■
Speed-sensitive volume control	■	■	■	■
Steering wheel-mounted audio controls	■	■	■	■

Safety/Security	S	S Plus	SV	SV SE
Nissan Advanced Air Bag System with dual-stage supplemental front air bags with seat belt and occupant-classification sensors ⁸	■	■	■	■
Driver and front-passenger seat-mounted side-impact supplemental air bags ⁹	■	■	■	■
Roof-mounted curtain side-impact supplemental air bags with rollover sensor for front and rear-seat outboard occupant head protection ⁹	■	■	■	■
Vehicle Dynamic Control (VDC) ¹⁰ with Traction Control System (TCS)	■	■	■	■
3-point ALR/ELR passenger seat belt system (ELR for driver)	■	■	■	■
Front seat belts with pretensioners and load limiters	■	■	■	■
Height-adjustable front head restraints	■	■	■	■
Height-adjustable rear outboard head restraints	■	■	■	■
LATCH System (Lower Anchors and Tethers for Children)	■	■	■	■
Zone Body construction with front and rear crumple zones	■	■	■	■
Hood-buckling creases	■	■	■	■
Energy-absorbing steering column	■	■	■	■
Pipe-style steel side-door guard beams	■	■	■	■
Tire Pressure Monitoring System (TPMS) ¹¹	■	■	■	
Tire Pressure Monitoring System (TPMS) with Easy-Fill Tire Alert ^{11, 12}				■

NISSAN ROADSIDE ASSISTANCE

Your peace of mind is on us. For 36 months or 36,000 miles, whichever comes first, your new Nissan is covered for the following:¹⁴

- Flat-tire changes
- Trip Interruption benefits
- Vehicle lockouts
- Emergency fuel delivery
- Jump starts

Follow Nissan on:



visit NissanUSA.com/versa-sedan

PRINTED IN POLAND

DIMENSIONS/CAPACITIES/WEIGHTS/MPG

Interior Dimensions - Inches	
Head room	39.8/36.6
Leg room	41.8/37.0
Hip room	48.1/46.2
Shoulder room	51.7/51.9

Capacities	
Seating capacity	5
Interior passenger volume (cu. ft.)	90.2
Cargo volume (cu. ft.)	14.9
Fuel tank (gals.)	10.8

Curb Weights - Lbs.				
	S	S Plus	SV	SV SE
Base total	2,395	2,466	2,494	2,494

2019 EPA Fuel Economy Estimates ¹	
City/Hwy/Combined MPG	
Manual transmission	27/36/30
Xtronic CVT (Continuously Variable Transmission)	31/39/34