

## NISSAN INTELLIGENT MOBILITY™

Nissan Intelligent Mobility guides everything we do. We're using new technologies to transform cars from mere driving machines into assistants. Together the journey is more confident, connected, and exciting. Whether it's cars that assist in the driving task, or highways that charge your EV as you go along, it's all in the very near future. And it's a future already taking shape in the Nissan you drive today.

### SEE VERSA® COME TO LIFE

Go to [NissanUSA.com](http://NissanUSA.com) and find an interactive brochure for Versa and every Nissan model in the lineup. Available on desktop, smartphone, or tablet, it's the full product story - including demos, videos, and complete info on trims, colors, and accessories.



Innovation  
that excites

2020  
VERSA®



and changes by independent companies are not within Nissan's or its partners' or agents' control. Enrollment, owner consent, personal identification number (PIN), and subscription agreement may be required to receive full suite of features and services. Trial periods (if applicable) begin on the date of vehicle purchase or lease of a new Nissan. Trial periods may be subject to change at any time and may be subject to early termination without notice. Required subscriptions may be sold separately for each available feature or service after trial period ends, and may continue until you call service provider to cancel. Installation costs, one-time activation fee, other fees and taxes may apply. Fees and programming subject to change. Feature may be subject to age restrictions in some areas. Subscriptions governed by service provider's subscription agreement, terms and conditions and privacy statements available at service provider's website. Text rates or data usage may apply. The Nissan names, logos and slogans are trademarks owned by or licensed to Nissan Motor Co. Ltd. or its North American subsidiaries. Other trademarks and trade names are those of their respective owners. For important safety information, system limitations, and additional operating and feature information, see dealer, Owner's Manual, or [NissanUSA.com/connect/important-information](http://NissanUSA.com/connect/important-information). Terms and conditions of Subscriber Agreement apply. NissanConnect EV features are provided by Nissan North America. Sirius XM Connected Vehicle Services Inc. (Sirius XM) partners with Nissan North America to provide NissanConnect Services powered by SiriusXM. All stated terms, disclosures and limitations of liability associated with connected vehicle services extend to Sirius XM and its affiliate, Sirius XM Radio Inc. SiriusXM is a registered trademark of Sirius XM Radio Inc. <sup>14</sup>Never program while driving. GPS mapping may not be detailed in all areas or reflect current road status. <sup>15</sup>Use Hands Free Text Messaging when parked in a safe location. If you must use while driving, monitor traffic conditions and keep both hands on the steering wheel to prevent collisions. Compatible device required. Message and data rates may apply. <sup>16</sup>Cargo shown for display purposes only. Cargo and load capacity limited by weight and distribution. Always secure cargo. <sup>17</sup>Extra cost option. <sup>18</sup>RearView Monitor may not detect every object and does not eliminate blind spots or warn of moving objects. See Owner's Manual for safety information. <sup>19</sup>Air bags are only a supplemental restraint system. Always wear your seat belt. Rear-facing child restraints should not be placed in the front-passenger's seat. All children 12 and under should ride in the rear seat properly secured in child restraints, booster seats, or seat belts according to their size. Air bags will only inflate in certain accidents. See Owner's Manual for safety information. <sup>20</sup>Tire Pressure Monitoring System is not a substitute for regular tire pressure checks. See Owner's Manual for safety information. <sup>21</sup>Vehicle must be on for the Easy-Fill Tire Alert to operate. <sup>22</sup>Intelligent Driver Alertness cannot provide a warning in every situation. See Owner's Manual for safety information. <sup>23</sup>See Owner's Manual for safety information. <sup>24</sup>State laws may apply. Review before using. <sup>25</sup>Genuine Nissan Accessories are covered by Nissan's Limited Warranty on Genuine Nissan Replacement Parts, Genuine NISMO® S-Tune Parts, and Genuine Nissan Accessories for the longer of 12 months/12,000 miles (whichever occurs first) or the remaining period under the 3-year/36,000-mile (whichever occurs first) Nissan New Vehicle Limited Warranty. Terms and conditions apply. See dealer, Warranty Information Booklet, or [parts.NissanUSA.com](http://parts.NissanUSA.com) for details. <sup>26</sup>Brake Assist cannot prevent all collisions and may not provide warning or braking in all conditions. Driver should monitor traffic conditions and brake as needed to prevent collisions. See Owner's Manual for safety information. <sup>27</sup>Vehicle Dynamic Control cannot prevent collisions due to abrupt steering, carelessness, or dangerous driving techniques. It should remain on when driving, except when freeing the vehicle from mud or snow. See Owner's Manual for safety information. <sup>28</sup>For a period of 36 months/36,000 miles from the date the vehicle is delivered to the first retail buyer or otherwise put into use, whichever is earlier. Apple CarPlay® is a registered trademark of Apple, Inc. Bluetooth® is a registered trademark of Bluetooth SIG, Inc. Bose® is a registered trademark of The Bose Corporation. Facebook® is a registered trademark of Facebook, Inc. Google, Google Assistant, Android, Android Auto, YouTube and other marks are trademarks of Google LLC. The Google Assistant is not available in certain languages and countries. HomeLink® is a registered trademark of Gentex Corporation. iPhone® is a registered trademark of Apple, Inc. All rights reserved. iPhone® or other external device not included. Siri® and Siri® Eyes Free are registered trademarks of Apple, Inc. The Sirius®, XM®, and SiriusXM® names and all related marks and logos are trademarks of Sirius XM Radio Inc. All other trademarks are the property of their respective owners. Twitter® is a registered trademark of Twitter, Inc. This brochure is intended for general descriptive and informational purposes only. It is subject to change and does not constitute an offer, representation or warranty (express or implied) by Nissan North America, Inc. Interested parties should confirm the accuracy of any information in this brochure as it relates to a vehicle directly with Nissan North America, Inc. before relying on it to make a purchase decision. Nissan North America, Inc. reserves the right to make changes, at any time, without prior notice, in prices, colors, materials, equipment, specifications, and models and to discontinue models or equipment. Due to continuous product development and other pre- and post-production factors, actual vehicle, materials and specifications may vary from this brochure. Some vehicles shown with optional equipment. See the actual vehicle for complete accuracy. Availability and delivery times for particular models or equipment may vary. Specifications, options and accessories may differ in Hawaii, U.S. territories and other countries. For additional information on availability, options or accessories, see your Nissan dealer or contact Nissan North America, Inc. At [NissanUSA.com](http://NissanUSA.com), you'll find virtual product demonstrations, a way to "build your own Nissan," a dealer locator, and more information about key Nissan support services. Or if you'd prefer, call 1-800-NISSAN-3 for answers to specific questions about Versa® or any other Nissan vehicle. The Nissan names, logos, product names, feature names, and slogans are trademarks owned by or licensed to Nissan Motor Co. Ltd. and/or its North American subsidiaries. Other trademarks and trade names are those of their respective owners. **Always wear your seat belt, and please drive responsibly.** ©2019 Nissan North America, Inc. '20 Versa®. 2001022-N-7/19-70K-CCI



The All-New 2020 Nissan Versa®  
**TOMORROW'S TECH,  
ALL WITHIN REACH**

It's everything you're looking for, and more. Versa features Nissan Intelligent Mobility technology that can help keep you safe and connects you to your world like never before. Want personalization? You got it. Interior tech lets you customize everything, from the available digital gauges to your perfect temperature. And when it comes to performance, merge and maneuver with ease, while getting up to 40 highway MPG.<sup>2</sup> This is tech that keeps you a step ahead. This is Nissan Intelligent Mobility.

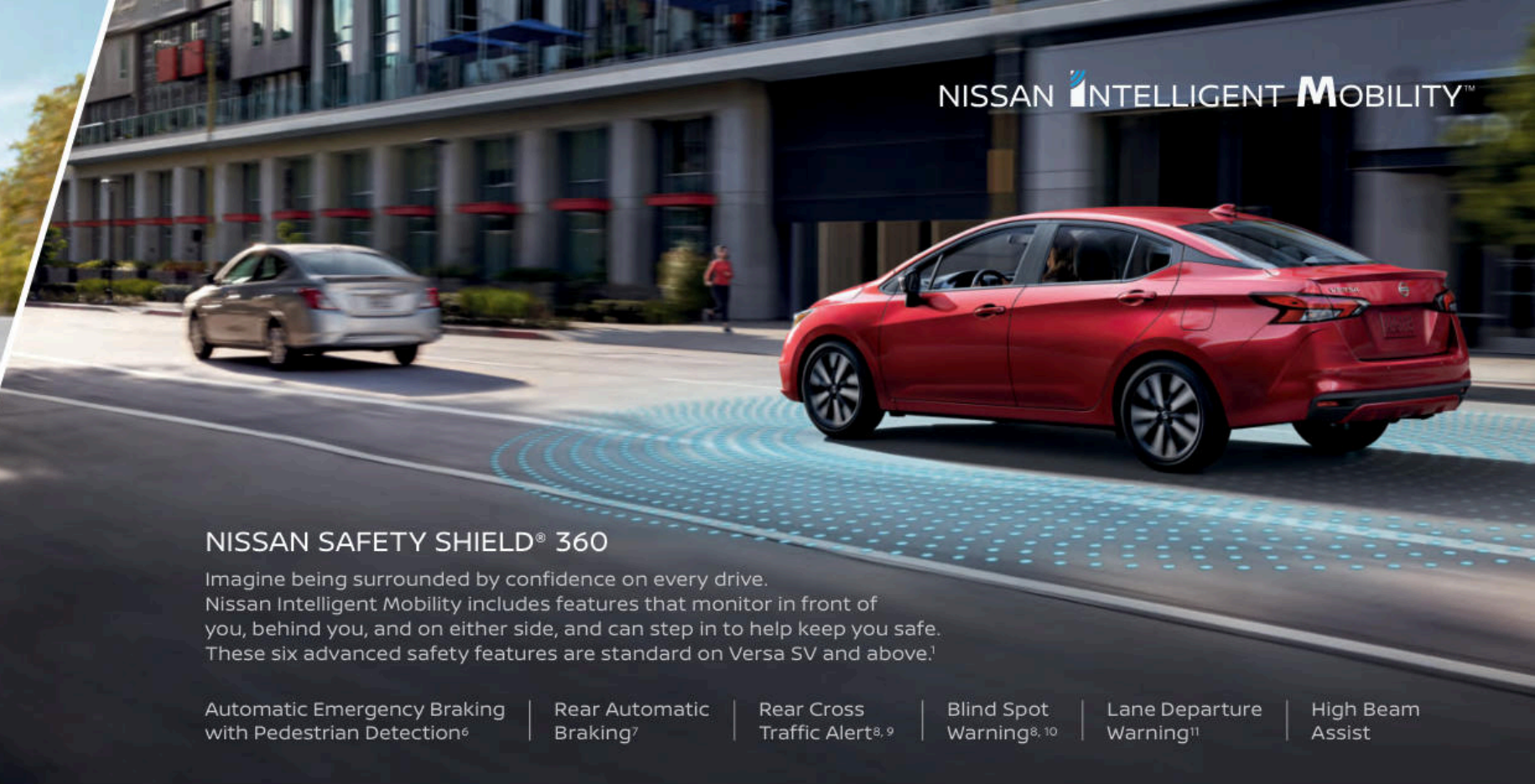


## INTELLIGENT CRUISE CONTROL

Go with the flow. Available Intelligent Cruise Control watches the flow of traffic to take the stress out of your commute. The system helps maintain an adjustable speed and set distance between you and the car ahead.<sup>3</sup>



NISSAN INTELLIGENT MOBILITY™



## NISSAN SAFETY SHIELD® 360

Imagine being surrounded by confidence on every drive. Nissan Intelligent Mobility includes features that monitor in front of you, behind you, and on either side, and can step in to help keep you safe. These six advanced safety features are standard on Versa SV and above.<sup>1</sup>

Automatic Emergency Braking with Pedestrian Detection<sup>6</sup>

Rear Automatic Braking<sup>7</sup>

Rear Cross Traffic Alert<sup>8,9</sup>

Blind Spot Warning<sup>8,10</sup>

Lane Departure Warning<sup>11</sup>

High Beam Assist

## ADVANCED DRIVE-ASSIST® DISPLAY

The innovative available Advanced Drive-Assist Display is at your command. The 7" color display can be customized to show everything from your tachometer to music to fuel economy history.<sup>4,5</sup>



## SMARTPHONE CONNECTIVITY



People to see? Places to be? Just ask Siri.<sup>®</sup> Equipped with Siri<sup>®</sup> voice control, Apple CarPlay<sup>®</sup> (shown on the right) brings on board your contacts, favorite messaging apps, iTunes<sup>®</sup> library, Apple Music<sup>®</sup> playlists, Apple Maps, and more. Simply plug in your compatible iPhone<sup>®</sup> and go.<sup>12,13</sup>

## android auto

Know where you're going and when. Google Maps<sup>™</sup> helps you navigate to your next appointment, while your Google Assistant keeps you on top of your schedule. Choose a song, change your destination, or respond to a text with your hands on the wheel using the hundreds of available voice commands.<sup>13, 14, 15</sup>



## GREAT MPG, PLENTY OF POWER, INFINITE CITY FUN

The all-new Versa® has the same exceptional 40 highway MPG<sup>2</sup> fuel economy as last year's fuel-sipping model, but delivers more power. That means plenty of punch around town and when merging on the freeway – your ticket to serious city fun.

32  
CITY MPG<sup>2</sup>



40  
HWY MPG<sup>2</sup>

## PASS-THROUGH TRUNK AND 60/40 SPLIT SEATBACKS

When you need more room for cargo, the available 60/40 split fold-down rear seats let you add some gear, with a passenger still aboard. Or fold both seats down and really pack it in.<sup>16</sup>



## IT'S OK TO SAY "WOW" EVERY TIME YOU GET IN

From the moment you get in, you'll feel like you've been upgraded. Impressive fit and finish, smart design, and tech you might find in some luxury vehicles all add up to your everyday wow moment.

D-shaped steering wheel

7" touch-screen display

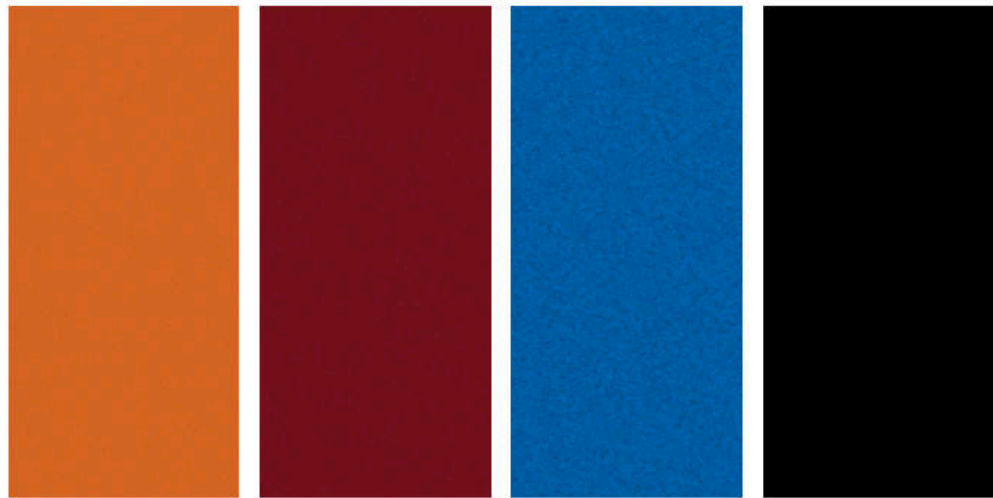
Contrast dash stitching<sup>8</sup>

CHOOSE YOUR COLOR



Fresh Powder Aspen White TriCoat<sup>17</sup> Brilliant Silver Metallic Gun Metallic

	S	SV	SR	S	SV	SR	S	SV	SR	S	SV	SR
CHARCOAL CLOTH	■						■			■		
GRAPHITE PREMIUM CLOTH		■			■			■			■	
CHARCOAL SPORT CLOTH						■						■



Monarch Orange Metallic<sup>17</sup> Scarlet Ember Tintcoat<sup>17</sup> Electric Blue Metallic Super Black

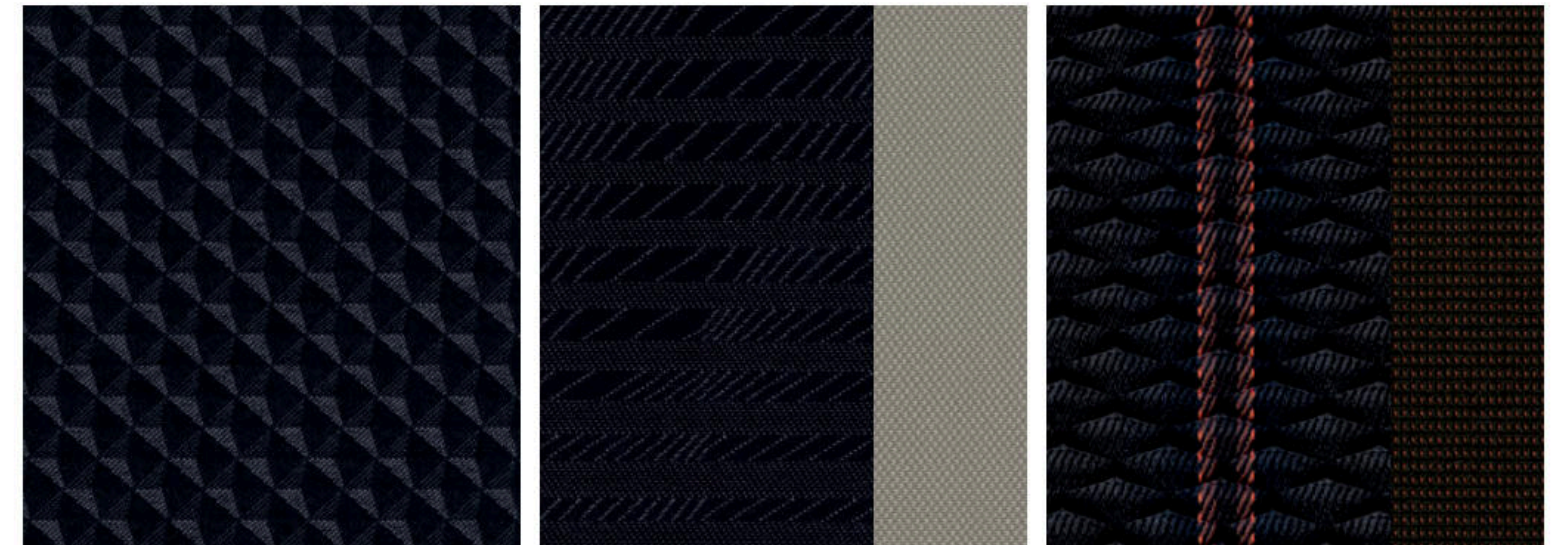
	S	SV	SR	S	SV	SR	S	SV	SR	S	SV	SR
CHARCOAL CLOTH	■						■			■		
GRAPHITE PREMIUM CLOTH		■			■			■			■	
CHARCOAL SPORT CLOTH						■						■

■ Standard  
 Nissan has taken care to ensure that the color swatches presented here are the closest possible representations of actual vehicle colors. Swatches may vary slightly due to the printing process and whether viewed in daylight, fluorescent or incandescent light. Please see the actual colors at your local Nissan dealer.

CHOOSE YOUR INTERIOR



Nissan Versa<sup>®</sup> SR shown in Charcoal Sport Cloth with optional equipment.



Charcoal Cloth S

Graphite Premium Cloth SV

Charcoal Sport Cloth SR

## CHOOSE YOUR TRIM LEVEL

**S**

- 122-hp 1.6-liter DOHC 4-cylinder engine
- 5-speed manual transmission
- Available Xtronic CVT® (Continuously Variable Transmission)
- Automatic Emergency Braking with Pedestrian Detection<sup>6</sup>
- Rear Automatic Braking<sup>7</sup>
- Lane Departure Warning<sup>11</sup>
- High Beam Assist
- RearView Monitor<sup>18</sup>
- 7" touch-screen display
- Bluetooth® Hands-free Phone System<sup>13</sup>
- Bluetooth® streaming audio<sup>13</sup>
- Siri® Eyes Free<sup>13</sup>
- AM/FM audio system with four speakers
- Three USB ports<sup>12</sup>
- Cruise control
- Air conditioning with in-cabin filter
- Sun visors with vanity mirrors
- Chrome V-Motion grille

- Cloth seat trim
- Matte carbon-fiber look interior door trim
- Available 60/40 split fold-down rear seats
- Nissan Advanced Air Bag System with driver and passenger dual-stage supplemental air bags<sup>19</sup>
- Seat-mounted driver and front-passenger side-impact supplemental air bags<sup>19</sup>
- Seat-mounted rear-passenger side-impact supplemental air bags<sup>19</sup>
- Driver and front-passenger knee air bags<sup>19</sup>
- Roof-mounted curtain side-impact supplemental air bags for front and rear-seat outboard occupant head protection<sup>19</sup>
- Tire Pressure Monitoring System (TPMS) with Easy-Fill Tire Alert<sup>20, 21</sup>



**SR** INCLUDES SV EQUIPMENT PLUS:

- 17" Split 5-spoke aluminum-alloy wheels
- LED headlights with LED signature Daytime Running Lights
- Fog lights
- Black painted heated outside mirrors with LED turn signal indicators
- Leather-wrapped steering wheel
- Leather-wrapped shift knob

- Automatic Temperature Control
- Nissan Intelligent Key® with Push Button Ignition
- Remote Engine Start System<sup>24</sup>
- Dark chrome V-Motion grille
- Body-color rear spoiler
- AM/FM audio system with six speakers



**SV** INCLUDES S EQUIPMENT PLUS:

- 16" Aluminum-alloy wheels
- 7" Advanced Drive-Assist® Display<sup>4, 5</sup>
- NissanConnect® 7" touch-screen display<sup>13</sup>
- Apple CarPlay<sup>®13</sup>
- Android Auto™<sup>13</sup>
- Blind Spot Warning<sup>10</sup>
- Rear Cross Traffic Alert<sup>9</sup>
- SiriusXM® Radio with 3-month complimentary trial access<sup>13</sup>
- Body-color heated outside mirrors with integrated turn signal indicators
- Prima-Tex™-appointed dash trim

- Body-color exterior door handles
- Chrome interior door handles
- Intelligent Driver Alertness<sup>22</sup>
- Rear Door Alert<sup>23</sup>
- Advanced Voice Recognition
- Driver's seat-mounted armrest



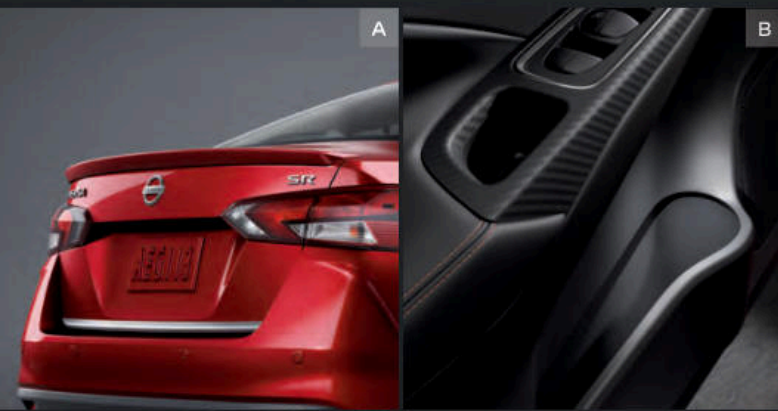
## CHOOSE YOUR PACKAGE

**SR** CONVENIENCE PACKAGE

- Intelligent Cruise Control<sup>3</sup>
- Heated front seats



## CHOOSE YOUR ACCESSORIES



Every Genuine Nissan Accessory is custom-fit, custom-designed and durability-tested. Each one is backed by Nissan's 3-year/36,000-mile (whichever occurs first) limited warranty (if installed by dealer at the time of purchase), and can be financed when installed by dealer at time of purchase.<sup>25</sup>

- A. Rear Spoiler**  
Spoil yourself in style.
- B. Map Pocket Lights**  
Shine a spotlight where you need it most.
- C. Center Console Storage Mats**  
Keep your valuables from going their own way.
- D. All-Season Floor Mats**  
Bring on the weather.
- E. Interior Accent Lighting**  
Add a warm glow to the mood.
- F. Illuminated Kick Plates**  
Fewer scuffs and a grand entry, every time.
- G. Center Armrest with Storage**  
Relax, and give your arm a rest.
- H. All-Season Trunk Area Protector**  
Because being a trunk isn't easy.

### Additional Accessories:

- Frameless Prizm Rearview Mirror with Universal Remote
- Carpeted Floor Mats
- Wheel Locks
- Clear Rear Bumper Protector
- Impact Sensor
- Door Sill Protectors
- Sliding Trunk Organizer<sup>16</sup>
- Hideaway Trunk Net<sup>16</sup>
- Portable Trunk Organizer<sup>16</sup>
- Shopping Bag Hooks
- Carpeted Trunk Area Protector
- And More

## GENUINE NISSAN ACCESSORIES

# TURN BRAND-NEW INTO ALL YOU

For more information and to shop online for Versa® Genuine Nissan Accessories, go to [bit.ly/20versa-estore](https://bit.ly/20versa-estore)



Nissan Versa® SR shown in Scarlet Ember Tintcoat with Exterior Ground Lighting, Chrome Trunk Accent, Side-window Deflectors, Rear Spoiler (standard on SR), and Splash Guards.

## SPECIFICATIONS

Engine	S	SV	SR
1.6-liter DOHC 16-valve 4-cylinder engine	■	■	■
122 hp @ 6,000 rpm			
114 lb-ft of torque @ 4,400 rpm			
Continuously Variable Valve Timing Control System (CVTCS) on Intake and exhaust valves	■	■	■
Sequential multi-point fuel injection	■	■	■
Nissan Direct Ignition System	■	■	■
Platinum-tipped spark plugs	■	■	■
Electronic drive-by-wire throttle	■	■	■

Drivetrain	S	SV	SR
Front engine/Front-Wheel Drive	■	■	■
5-speed manual transmission	■		
Xtronic CVT® (Continuously Variable Transmission)	□	■	■

Brakes	S	SV	SR
Front vented disc brakes/rear drum brakes	■	■	■
Anti-lock Braking System (ABS)	■	■	■
Electronic Brake force Distribution (EBD)	■	■	■
Brake Assist <sup>26</sup>	■	■	■

Suspension/Steering	S	SV	SR
Independent strut front suspension with stabilizer bar	■	■	■
Torsion beam rear suspension with integrated stabilizer bar	■	■	■
Vehicle-speed-sensitive electric power steering	■	■	■

Driver Assistance Technologies	S	SV	SR
Cruise control	■	■	■
Intelligent Cruise Control <sup>3</sup>			C
Automatic Emergency Braking with Pedestrian Detection <sup>6</sup>	■	■	■
Lane Departure Warning <sup>11</sup>	■	■	■
High Beam Assist	■	■	■
Blind Spot Warning <sup>10</sup>		■	■
Rear Cross Traffic Alert <sup>9</sup>		■	■
RearView Monitor <sup>18</sup>	■	■	■
Rear Automatic Braking <sup>7</sup>	■	■	■
Hill start assist	■	■	■
Intelligent Driver Alertness <sup>22</sup>		■	■
Vehicle Dynamic Control (VDC) <sup>27</sup> with Traction Control System (TCS)	■	■	■

Wheels/Tires	S	SV	SR
15" x 6.5" steel wheels with full wheel covers	■		
16" x 6.0" aluminum-alloy wheels		■	
17" x 6.5" split 5-spoke aluminum-alloy wheels			■
195/65R15 all-season tires	■		
205/55R16 all-season tires		■	
205/50R17 all-season tires			■

■ Standard    C Part of Convenience Package  
□ Optional

Exterior Features	S	SV	SR
Automatic on/off headlights	■	■	■
Halogen projector headlights	■	■	
LED headlights with LED signature Daytime Running Lights			■
Fog lights			■
Chrome V-Motion grille	■	■	
Dark chrome V-Motion grille			■
Dual power outside mirrors	■	■	■
Heated outside mirrors with LED turn signal indicator		■	■
Black outside mirrors	■		
Body-color outside mirrors		■	
Black-painted outside mirrors			■
Black door handles	■		
Body-color door handles		■	■
Body-color rear spoiler			■
Carbon-fiber look rear diffuser	■	■	■

Comfort/Convenience	S	SV	SR
Air conditioning with in-cabin microfilter	■	■	
Automatic Temperature Control			■
Power windows with driver's one-touch auto-up/down	■	■	■
Power door locks with auto-locking feature	■	■	■
Rear Door Alert <sup>23</sup>		■	■
Follow Me Home headlights			■
Remote Keyless Entry with Push Button Ignition	■	■	
Nissan Intelligent Key® with Push Button Ignition			■
Remote Engine Start System <sup>24</sup>			■
Tilt and telescoping steering column	■	■	■
Sun visors with vanity mirrors and extensions	■	■	■
Map lights with key-linked illuminated entry	■	■	■
12-volt DC power outlet	■	■	■

Seating/Appointments	S	SV	SR
6-way manual adjustable driver's seat	■	■	■
4-way manual adjustable front-passenger's seat	■	■	■
Driver's seat-mounted armrest		■	■
Cloth seat trim	■		
Premium cloth seat trim		■	
Sport cloth seat trim			■
Prima-Tex™-appointed dash trim		■	■
Heated front seats			C
Leather-wrapped steering wheel			■
Leather-wrapped shift knob			■
Matte carbon-fiber look interior door trim	■	■	■
Chrome interior door handles		■	■
60/40-split fold-down rear seatbacks	□	■	■

Infotainment	S	SV	SR
Advanced Drive-Assist® Display <sup>4, 5</sup>		■	■
7" touch-screen display	■		
NissanConnect® 7" touch-screen display <sup>13</sup>		■	■
Apple CarPlay <sup>®13</sup>		■	■
Android Auto™ <sup>13</sup>		■	■
Siri® Eyes Free <sup>13</sup>	■	■	■

Infotainment (continued)	S	SV	SR
Hands-free Text Messaging Assistant <sup>15</sup>	■	■	■
Bluetooth® Hands-free Phone System <sup>13</sup>	■	■	■
AM/FM audio system with four speakers	■	■	
AM/FM audio system with six speakers			■
SiriusXM® Radio with 3-month complimentary trial access <sup>13</sup>		■	■
Nissan Voice Recognition for audio	■	■	■
Auxiliary audio input jack <sup>12</sup>	■	■	■
Three USB ports <sup>12</sup>	■	■	■
Bluetooth® streaming audio <sup>13</sup>	■	■	■
Steering wheel-mounted audio controls	■	■	■

Safety/Security	S	SV	SR
Nissan Advanced Air Bag System with dual-stage supplemental front air bags with seat-belt and occupant-classification sensors <sup>19</sup>	■	■	■
Seat-mounted driver and front-passenger side-impact supplemental air bags <sup>19</sup>	■	■	■
Seat-mounted rear passenger side-impact supplemental air bags <sup>19</sup>	■	■	■
Driver and front-passenger supplemental knee air bags <sup>19</sup>	■	■	■
Roof-mounted curtain side-impact supplemental air bags for front- and rear-seat outboard occupant head protection <sup>19</sup>	■	■	■
3-point ALR/ELR seat belt system (ELR only for driver)	■	■	■
Front seat belts with pretensioners and load limiters	■	■	■
LATCH System (Lower Anchors and Tethers for Children)	■	■	■
Zone Body construction with front and rear crumple zones	■	■	■
Hood buckling creases and safety stops	■	■	■
Child safety rear door locks	■	■	■
Power windows lock-out button	■	■	■
Energy-absorbing steering column	■	■	■
Tire Pressure Monitoring System (TPMS) with individual tire pressure display and Easy-Fill Tire Alert <sup>20, 21</sup>	■	■	■
Nissan Vehicle Immobilizer System	■	■	■

## NISSAN ROADSIDE ASSISTANCE

Your peace of mind is on us. For 36 months or 36,000 miles, whichever comes first, your new Nissan is covered for the following:<sup>29</sup>

- Flat-tire changes
- Trip Interruption benefits
- Jump starts
- Vehicle lockouts
- Emergency fuel delivery

Follow Nissan on:



visit [NissanUSA.com/versa](http://NissanUSA.com/versa)

PRINTED IN USA

## DIMENSIONS/CAPACITIES/WEIGHTS/MPG

Exterior Dimensions - Inches	S	SV	SR
	Wheelbase	103.1	103.1
Overall length	177	177	177
Overall width	68.5	68.5	68.5
Overall height	57.3	57.3	57.7
Track width (front/rear)	59.8/60.2	59.8/60.2	59.3/59.6

Interior Dimensions - Inches			
Head room	39.5/36.3		
Leg room	44.5/31		
Hip room	50.9/50.1		
Shoulder room	53.1/53.6		

Aerodynamics - Cd	S MT	S CVT	SV	SR
	Drag coefficient	0.32	0.32	0.32

Curb Weights - Lbs.	S	SV	SR
	Base total		
Manual transmission	2,599		
Xtronic CVT®	2,650	2,657	2,729

2020 EPA Fuel Economy Estimates <sup>2</sup>			
City/Hwy/Combined MPG			
Manual transmission	27/35/30	-	-
Xtronic CVT®	32/40/35	32/40/35	32/40/35

<sup>1</sup>Availability of features vary by vehicle model year, model, trim level, packaging, and options. <sup>2</sup>2019 EPA Fuel Economy Estimates 27 City/35 Highway/30 Combined for Versa® with 5-speed manual transmission; 32 City/40 Highway/35 Combined for Versa with Xtronic CVT.® Actual mileage may vary with driving conditions - use for comparison only. <sup>3</sup>Intelligent Cruise Control uses limited braking and is not a collision avoidance or warning system. Driver should monitor traffic conditions and brake as needed to prevent collisions. See Owner's Manual for safety information. <sup>4</sup>Driving is serious business and requires your full attention. If you have to use the feature while driving, exercise extreme caution at all times so full attention may be given to vehicle operation. <sup>5</sup>Information displayed is dependent on how vehicle is equipped. <sup>6</sup>Automatic Emergency Braking with Pedestrian Detection cannot prevent all collisions and may not provide warning or braking in all conditions. Driver should monitor traffic conditions and brake as needed to prevent collisions. See Owner's Manual for safety information. <sup>7</sup>Rear Automatic Braking cannot prevent all collisions and may not provide warning or braking in all conditions. Driver should monitor traffic conditions and brake as needed to prevent collisions. See Owner's Manual for safety information. <sup>8</sup>Available feature. <sup>9</sup>Rear Cross Traffic Alert may not detect all vehicles. See Owner's Manual for safety information. <sup>10</sup>Blind Spot Warning cannot prevent collisions and may not detect every object or warn in all situations. Driver should always turn and look before changing lanes. See Owner's Manual for safety information. <sup>11</sup>Lane Departure Warning operates only when lane markings are able to be detected. See Owner's Manual for safety information. <sup>12</sup>Driving is serious business and requires your full attention. If you have to use the connected device while driving, exercise extreme caution at all times so full attention may be given to vehicle operation. <sup>13</sup>Feature availability is dependent on vehicle model, trim level, packaging and options. Compatible connected device may be required and feature availability may be dependent on device's capability. Refer to connected device's owner's manual for details. Late availability for some features. **Driving is serious business and requires your full attention.** Only use features and connected devices when safe and legal to do so. Some features, including automatic crash notification and SOS, are dependent upon the telematics device being in operative condition, its ability to connect to a wireless network, compatible wireless network availability, navigation map data and GPS satellite signal reception, the absence of which can limit or prevent the ability to reach Customer Care or receive support. GPS mapping may not be detailed in all areas or reflect current road status. Never program GPS while driving. Only use Remote Engine Start and Remote Horn features in accordance with any laws, rules or ordinances in effect in your vehicle's location. Some services and features are provided by independent companies not within Nissan's control. **Should service provider terminate or restrict service or features, service or features may be suspended or terminated without notice or with no liability to Nissan or its partners or agents.** Services and features may require compatible cellular network provided by independent companies not within Nissan or its partners' or agents' control. Cellular network signal strength may vary and may not be available in all areas or at all times. Services and features may not function if cellular network is unavailable, restricted, or terminated. Nissan and its partners or agents are not responsible for associated costs or other third party charges that may be required for continued operation due to cellular network unavailability, restriction, or termination (including equipment replacements/upgrades, if available, or roaming charges on alternative networks). Technology is evolving.