

1993

Oldsmobile



Oldsmobile

Book of Contents

NINETY EIGHT

*Ninety Eight Sterling Sedan
Ninety Eight Regency Elite
Ninety Eight Regency*

16

EIGHTY EIGHT ROYALE

*Eighty Eight Royale LS
Eighty Eight Royale LS
Eighty Eight Royale*

22

CUTLASS SUPREME

*Cutlass Supreme Derivational Series
Cutlass Supreme SE
Cutlass Supreme SE
Cutlass Supreme CustomHD*

28

ACHIEVA

*Achieva SE
Achieva SE
Achieva JCE
Achieva SE*

47

CUTLASS CIERA

*Cutlass Ciera SE
Cutlass Ciera SE
Cutlass Cruiser SE
Cutlass Cruiser SE*

58

SILHOUETTE

66

BRAVADA

72

**THE
OLDSMOBILE
EDGE**

82

THE
POWER OF
INTELLIGENT
ENGINEERING

There are many qualities that help define an automobile. There are, however, five particular qualities that set an Oldsmobile apart: great engines, meaningful engineering, step-up comfort and features, vehicles that are solid, well-built and safe, and, perhaps most importantly, a superior owner who loves to be assured by the Oldsmobile Edge — the most complete commitment to owner satisfaction in the industry.

While many automotive manufacturers can offer you some of these qualities, only Oldsmobile gives you all of them.

It is the balance of luxury and value, performance and economy, comfort and safety, that truly exemplifies the Power of Intelligent Engineering.

And that is what makes a car more than just a car — it makes a car an Oldsmobile.

**G R E A T
E N G I N E S**

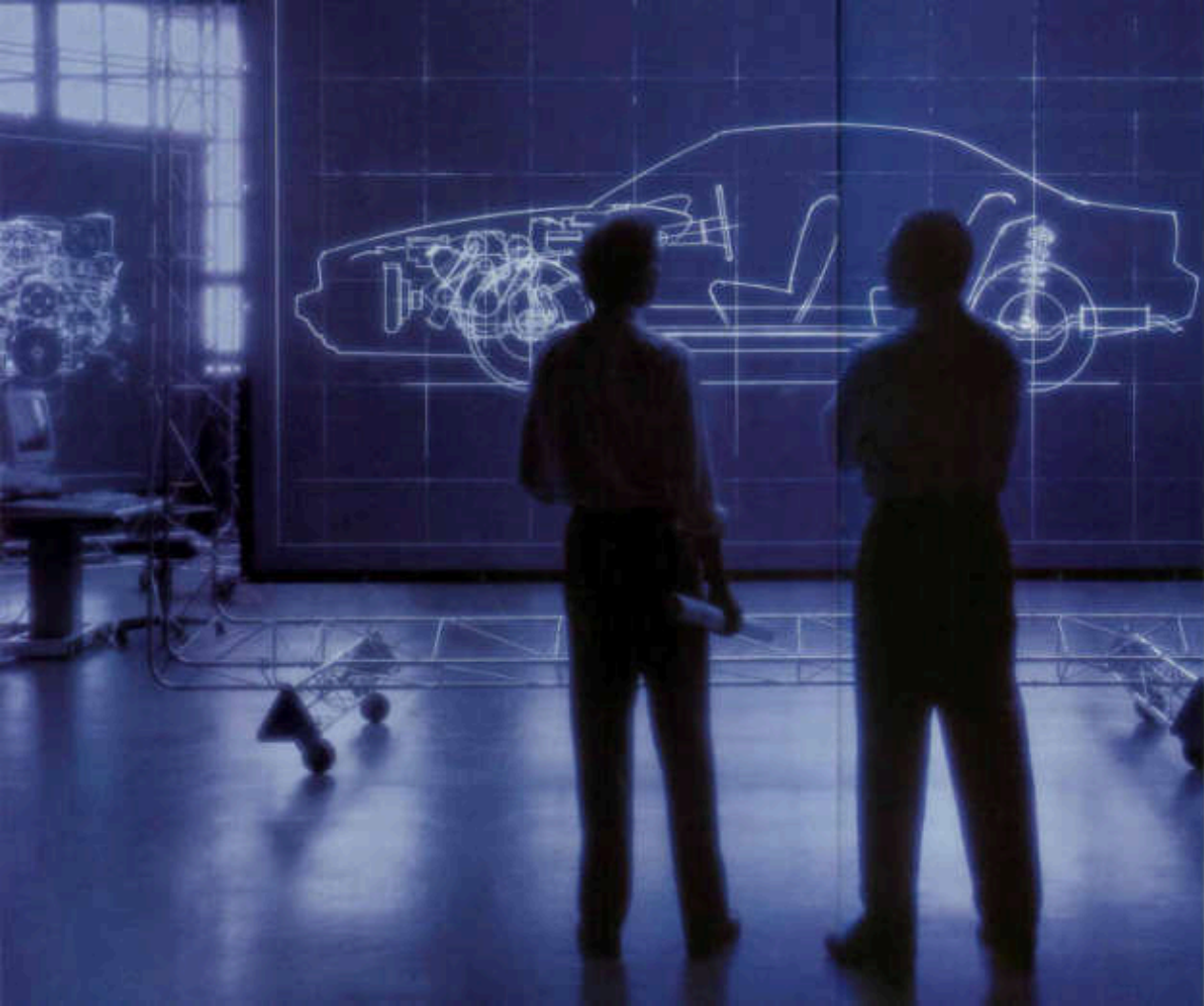
The heart of every automobile is its engine. And at the heart of every Oldsmobile is a power plant intelligently engineered with a specific type of driver in mind.

One of the newest examples is the potent 195-horsepower 981-Quad 4 Power on the nation's racing circuits in 1992. It now powers the hot new 1993 Achieve 30X. The world-class 3000 V6 brings an uncommon degree of smoothness to our full-size sedans. The advanced Twin-Dual-Cam V6, available on Cutless Supreme, is one of the largest 24-valve V6 engines in the world.

Oldsmobile offers 12 different engines in all. With that range of engines, there's one to meet the specific needs of virtually every driver.

The result is more than the power to move you to the power—and the intelligence—to move you smoothly, quietly and with confidence.





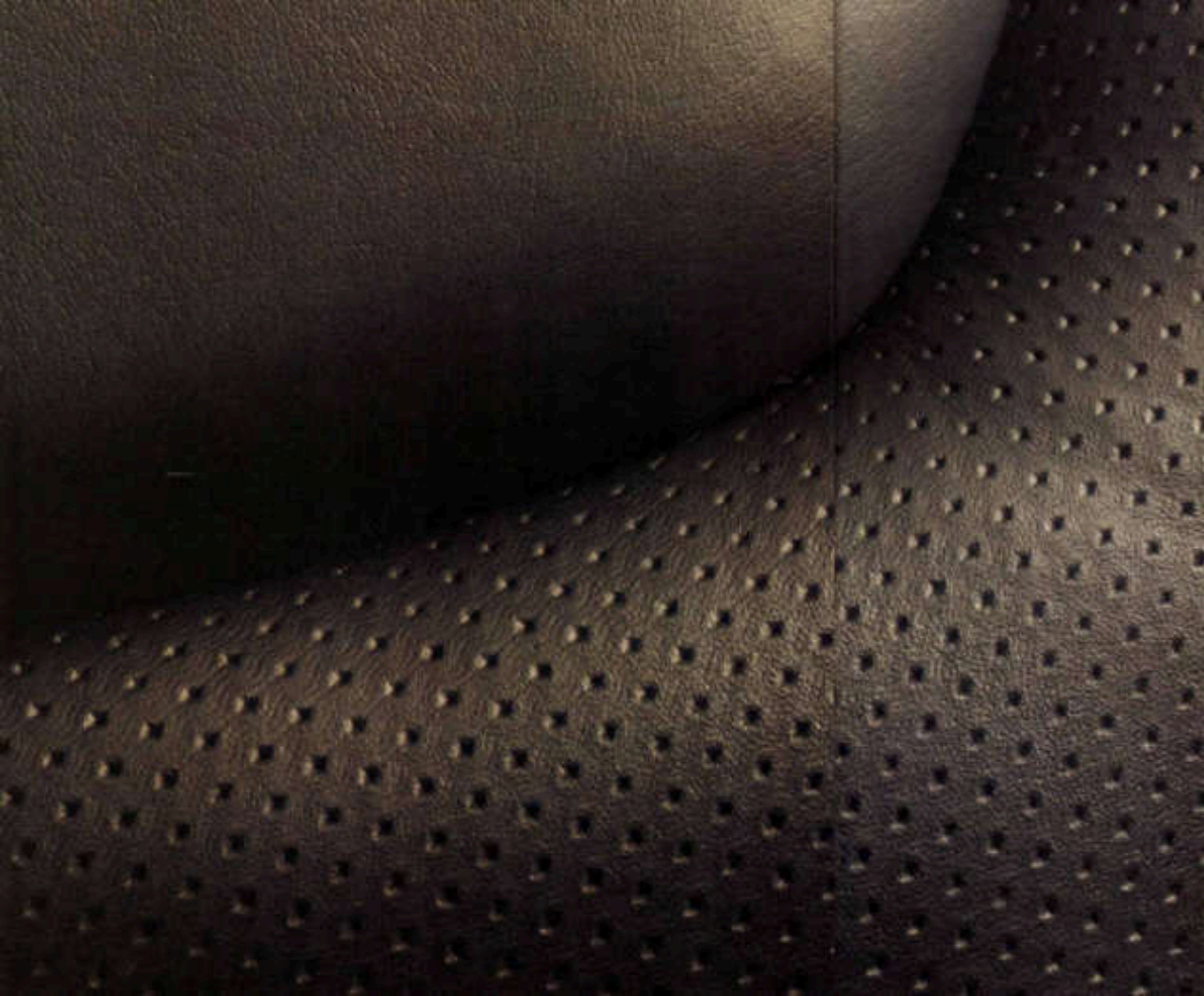
**A LEADER
IN
MEANINGFUL
ENGINEERING**

At Oldsmobile, we know the kind of engineering that ultimately matters the most is the kind that results in a better driving experience for you. Like Oldsmobile SmartTrak system, which combines full-time all-wheel drive and four-wheel anti-lock brakes to maintain sure-footed control in virtually any road conditions.

Advanced powertrain controls give our electronic shift transmission a drifting action that is as fun as it is precise, making it one of the smoothest automatics in the world. It's available on 12 Oldsmobile models for 1993.

Its engineering that produces anti-lock braking systems affordable enough to be standard equipment on the smallest Oldsmobile, as well as the largest.

It's the kind of engineering most drivers won't even notice... until it's needed. When it comes to intelligent engineering, however, what's most important isn't what you see. It's what you get when you press the accelerator, turn the steering wheel or apply the brakes.



**STEP-UP
COMFORT AND
FEATURES**

An Oldsmobile is much more than transportation—it's an environment. One that surrounds, comforts and cradles you with all the features you need...and some that are just wonderful to have.

As a driver, for example, you'll appreciate the steering wheel touch controls that let you adjust the climate and/or sound system on new 1993 Oldsmobiles—without taking your hands off the wheel.

As a passenger, you'll like the air ducts that direct warm or cool air to the rear seat on many models...and the 15 acoustic refinements that make Silhouette one of the quietest minivans in the industry.

Every 1993 Oldsmobile offers not only the option of power locks, but also remote controls that let you lock or unlock doors and trunks, and turn on interior lights, from up to 15 feet away.

All of these conveniences add up to make an Oldsmobile a place where you'll enjoy being, no matter where you're going.

**SOLID
WELL-BUILT
AND SAFE**

Your well-being is an important consideration in the design of every Oldsmobile.

That results in vehicles that not only help protect you in the event of an accident, but also help you steer clear of trouble in the first place. Anti-lock brakes are standard on 13 models. Every Oldsmobile has front wheel drive, except Bravada—and it has all-wheel drive SmartTrak.

Occupant protection features for all Oldsmobile passenger cars include side-guard door beams, front and rear crumple zones, energy-absorbing hoods, and three-point lap and shoulder belts. Over-side air bags are standard on eight Oldsmobile models for 1995.

And, for your peace of mind, we also offer automatic door locks, rear door child security locks, and a 7005-Ray theft deterrent system on many models.

Of all the elements in the power of Intelligent Engineering, none stand apart more than our commitment to safety.



**SUPERIOR
OWNERSHIP
EXPERIENCE**

With some car companies, once the sale is made, you're forgotten. That doesn't happen at Oldsmobile. We work very hard to keep our customers happy. If you want to know how well we're doing, just ask one. Owner surveys show that 90 percent of all new Oldsmobile owners would recommend their selling dealer to a friend.

In each of our 300-plus locations, you'll find highly trained technicians. As participants in our demanding service training program, many have achieved Oldsmobile Master Technician status. To help keep your Oldsmobile in peak condition, we'll keep in touch with regular service reminders.

We take particular pride in the way we care for you after the sale with the Oldsmobile Edge—the most complete commitment to owner satisfaction in the industry. For the full story, see page 62.

Few things in this world are as satisfying as taking a new car home. At Oldsmobile, we're dedicated to ensuring that feeling for a long, long time.



NINETY EIGHT

Ninety Eight Touring Sedan

Ninety Eight Regency Elite

Ninety Eight Regency





• 200-HP ENGINE WITH TURBO FUEL INJECTION

• ELECTRONIC AUTOMATIC TRANSMISSION

• DRIVER-ORIENTED AIR BAG

• AUTOMATIC DUAL-ZONE AIR CONDITIONING

• ADVANCED TRACTION ENGINEERING: SIX-SPEAKER SOUNDBOX, SPORT-WEAR DRIVE AND AVAILABLE TRACTION CONTROL

• 4-WHEEL INDEPENDENT FRONT SUSPENSION

• 18" ALUMINUM WHEELS

• POWER-ADJUSTABLE SEATBELT SEATS TETHERING TO LATCHES

• CENTER CONSOLE WITH 25-AMP POWER WINDOWS

• ELECTRONIC DRIVING REARVIEW MIRROR



Driver-oriented analog instrument cluster includes tachometer and oil pressure, coolant temperature and oil-water gauge.

NINETY EIGHT TOURING SEDAN



The available Supercharged 200-HP engine provides 260 horsepower—the kind of power you'll enjoy at a 17 mpg.

For looking the choice between a driver's car and a luxury car has been just that—a choice. The Ninety Eight Touring Sedan only makes any compromise you have to make between those alternate titles, making it a car that can answer all your driving needs. It combines the luxury of its rear-

power bucket seats with lumbar support, and the performance of an advanced 200-HP engine with turbo fuel injection. Similarly, it provides the luxury of an impeccably smooth-shifting electronic automatic transmission, with the road control of Advanced Traction

lock brakes. Front-wheel drive and available traction control. Other driver-oriented features include a leather-wrapped steering wheel with touch controls, and center console with four shifters. Its luxury and its performance—a combination that will raise your look and awaken your spirit.



Available traction control helps maintain better grip accelerating on slippery road surfaces by diverting wheel gas during take-off—30 mph acceleration and automatically correcting on slippage.

Right: Different "berths" (seats) are different. That's why the Ninety Eight Regency Elite's available dual-zone climate control system allows you to sit at different temperatures both in front and rear passages.



Even: The available Computer Command Ride system lets the driver select a "normal" or "firm" ride.

Left: The Ninety Eight's airbags are all specially designed to help eliminate road noise.



Full electronic instrumentation is available and a driver-side air bag is available. Electronic air bags seat both belt, seat belt or air bag.

NINETY EIGHT REGENCY ELITE

Many luxury cars claim to be exceptionally quiet, comfortable and smooth. The Ninety Eight Regency Elite truly delivers on this promise. The promise of quietness is insured by a process we call sound mapping, which enables us to put sound-dampening materials in their most effective places. The result for you is one of the quietest cars on the road today. Enhancing comfort is an available automatic climate control system that lets you set different temperatures for the driver and front seat passenger. After all, it's rare that two different people have temperature preferences that are exactly alike. Meanwhile,

a rear seat heating/air conditioning outlet is provided for the comfort of all rear seat passengers. Contributing to smoothness are four-wheel independent suspension, automatic load leveling and available Computer Command Ride, which lets you select your own ride level preference or gives you the option of letting it automatically adjust for you. Either way, it reacts to changes in the road in a fraction of a second, making your ride smoother and more enjoyable. Quiet, comfortable, sleek, smooth—the Ninety Eight Regency Elite exemplifies all the qualities you expect from a luxury sedan.



Ninety Eight Regency Elite shown with styling areas optional or available dealer.

- 2000 CC ENGINE
- 5-SPEED MANUAL OR 4-SPEED AUTOMATIC TRANSMISSION
- FRONT WHEEL DRIVE
- ANTI-LOCK BRAKES
- 4-WHEEL INDEPENDENT SUSPENSION
- DRIVER-SIDE AIR BAG
- ALTERNATE COMFORT CLIMATE CONTROL SYSTEM
- STEERING WHEEL POWER CONTROLS
- POWER WINDOWS WITH LOCKOUT SWITCH AND SAFETY-SENSITIVE AUTO-CLOSE

NINETY EIGHT SPECIFICATIONS



View here is the Ninety Eight Regency Elite.



NINETY EIGHT DIMENSIONS

Wheelbase (in.)	101.7	Height (in.)	54.2
Trunk, load/lift (in.)	21.5/18.2	Weight, curb (lb.)	3212
Tire size (Regency/Regency Elite/Travering Sedan)*	P225/60R16, P225/50R16	Maximum, load/lift (lb.)	38,715/3
Wheel size (Regency/Regency Elite/Travering Sedan)	16 x 6.7/16 x 7	Luggage, load/lift (in.)	42.3/41.3
Trunk type, front/rear	Anti-lock (Regency Elite)	Shoulder room, front/rear (in.)	55.5/56.7
Trunk capacity (Regency/Regency Elite/Travering Sedan)	67/67/67	Trunk capacity (Regency/Regency Elite/Travering Sedan)	67/67/67
Trunk load (lb.)	110	Trunk capacity (lb.)	301
Length (in.)	202.2	*See dealer for load which design also and with 10% margin.	
Width (in.)	73.2		

INTERIOR/EXTERIOR COLOR COMBINATIONS

White 40	Midnight Garnet Red Metallic 72	Dark Garnet Red Metallic 77	Sign Metallic 57	Regency Pearl Metallic 31
Dark Green 34	Light Sapphire Blue Metallic 27	Midnight Sapphire Blue Garnet Metallic 51	Black Sapphire Blue Metallic 24	Platinum Metallic 11
Interior colors: ■ Graphics ■ Midline Gray ■ Dark Sapphire Blue ■ Body Red ■ Midline Strip				

1. N.E. on Travering Sedan. 2. Extern. and color available only with lower body accents color. Platinum Metallic 11, Ninety Eight Regency and Regency Elite are available with exclusive paint, or with a lower body accent color—Platinum Metallic 11 or Cardinal Gray Metallic 27.

NINETY EIGHT POWERTRAIN SPECIFICATIONS

ENGINE	SUPERCHARGED 2000 V6	2000 V6
Displacement	3000 (231 cu. in.)	3000 (231 cu. in.)
Engine type	V6	V6
Horsepower	205 @ 4000	175 @ 4000
Torque	210 @ 2500	225 @ 2500
Compression ratio	9.5:1	9.4:1
Fuel management	Sequential port injection	Sequential port injection
Availability	Optional on Regency or Travering Sedan	Standard on all Ninety Eight models

TRANSAXLE/SUSPENSION/HANDLING

Transaxle	4-speed automatic electronic
Front/rear	4-wheel independent, with MacPherson strut/spring
Front braking, diameter, curb to curb (in.)	30.6/30.6/30.6



16" aluminum-spoke wheel. Standard on Travering Sedan.



16" aluminum-spoke wheel. Included with touring suspension on Regency and Regency Elite.



17" aluminum-spoke wheel. Standard on Regency Elite, optional on Regency.



17" rimmed cover wheel. Standard on Regency, optional on Regency Elite.

NINETY EIGHT OPTION PACKAGES

ON REQUEST (CONTACT SALES OR GO TO WWW.OLDSMOBILE.COM)	REGENCY			REGENCY ELITE		
	100	150	200	100	150	200
16" aluminum-spoke wheel						
Supercharger package for low fuel, low oil pressure, low oil level, high engine temperature, low water level level and boiler warning						
Electrochromic day-night mirror (standard)						
Lighter rear mirrors						
Power passenger's seat						
Steering wheel touch controls for climate and radio						
Vehicle immobilizer (optional)						
Remote accessories control garage						
Convenience lamp						
Trunk cargo net						
Dual zone heat, ventilation, A/C system						
Power window lift-down						
Wedge (standard) automatic headlight control						
Climate delay activate driver-side mirror with Electrochromic glass control						



The Regency Elite and Travering Sedan come with an overhead console with independently controlled map lights.

STANDARD FEATURES

NINETY EIGHT REGENCY INCLUDES

- 16" x 16" alloy wheels with mesh inserts
- 2000 cc V6 engine, 175-hp and 210 lb-ft torque
- 160/70R15 tires, optional disc and ABS
- 100-hp 2000 cc V6 engine, 150-hp and 210 lb-ft torque
- ABS (available only on Elite)
- 100-hp 2000 cc V6 engine, 150-hp and 210 lb-ft torque
- 100-hp 2000 cc V6 engine, 150-hp and 210 lb-ft torque
- 100-hp 2000 cc V6 engine, 150-hp and 210 lb-ft torque
- 100-hp 2000 cc V6 engine, 150-hp and 210 lb-ft torque
- 100-hp 2000 cc V6 engine, 150-hp and 210 lb-ft torque

NINETY EIGHT REGENCY ELITE

- 160/70R15 tires, optional disc and ABS
- 100-hp 2000 cc V6 engine, 150-hp and 210 lb-ft torque
- 100-hp 2000 cc V6 engine, 150-hp and 210 lb-ft torque
- 100-hp 2000 cc V6 engine, 150-hp and 210 lb-ft torque
- 100-hp 2000 cc V6 engine, 150-hp and 210 lb-ft torque
- 100-hp 2000 cc V6 engine, 150-hp and 210 lb-ft torque
- 100-hp 2000 cc V6 engine, 150-hp and 210 lb-ft torque
- 100-hp 2000 cc V6 engine, 150-hp and 210 lb-ft torque
- 100-hp 2000 cc V6 engine, 150-hp and 210 lb-ft torque
- 100-hp 2000 cc V6 engine, 150-hp and 210 lb-ft torque

OPTIONAL FEATURES

- 160/70R15 tires, optional disc and ABS
- 100-hp 2000 cc V6 engine, 150-hp and 210 lb-ft torque
- 100-hp 2000 cc V6 engine, 150-hp and 210 lb-ft torque
- 100-hp 2000 cc V6 engine, 150-hp and 210 lb-ft torque
- 100-hp 2000 cc V6 engine, 150-hp and 210 lb-ft torque
- 100-hp 2000 cc V6 engine, 150-hp and 210 lb-ft torque
- 100-hp 2000 cc V6 engine, 150-hp and 210 lb-ft torque
- 100-hp 2000 cc V6 engine, 150-hp and 210 lb-ft torque
- 100-hp 2000 cc V6 engine, 150-hp and 210 lb-ft torque
- 100-hp 2000 cc V6 engine, 150-hp and 210 lb-ft torque

OPTIONAL FEATURES CONTINUED

- 160/70R15 tires, optional disc and ABS
- 100-hp 2000 cc V6 engine, 150-hp and 210 lb-ft torque
- 100-hp 2000 cc V6 engine, 150-hp and 210 lb-ft torque
- 100-hp 2000 cc V6 engine, 150-hp and 210 lb-ft torque
- 100-hp 2000 cc V6 engine, 150-hp and 210 lb-ft torque
- 100-hp 2000 cc V6 engine, 150-hp and 210 lb-ft torque
- 100-hp 2000 cc V6 engine, 150-hp and 210 lb-ft torque
- 100-hp 2000 cc V6 engine, 150-hp and 210 lb-ft torque
- 100-hp 2000 cc V6 engine, 150-hp and 210 lb-ft torque
- 100-hp 2000 cc V6 engine, 150-hp and 210 lb-ft torque



As seen here, fogging lights are standard on every Ninety Eight.



Steering wheel touch controls are standard on both the Regency Elite and Travering Sedan.



The Electrochromic rearview mirror automatically adjusts to reduce glare from headlights (standard on Elite and Travering Sedan).



The Ninety Eight's spacious trunk has an overall capacity of 67.2 cubic feet.



All models can be ordered with a CD player providing the ultimate in sound quality.

E I G H T Y E I G H T R O Y A L E

Eighty Eight Royale LSS

Eighty Eight Royale LS

Eighty Eight Royale



Who said a full-size sedan can't have a soul for the road? Certainly not anyone who's spent any amount of time behind the wheel of an Eighty Eight Royale LSS. The soul of this car lives on the open road and comes to life in the form of a 3800 V6 engine and rack brakes, front bucket seats, a center console with floor shifter, and a sleek, understated design. All these features contribute to a car that not only responds effortlessly but with precise road manners, as well. Of course, the Eighty Eight Royale LSS is a full-size sedan, so we've designed it to give you plenty of well-appointed interior room, 135 cubic feet of trunk space and an electronic automatic transmission that shifts in a whisper. However, after taking the car down a winding country road, a whisper is hardly the way you'll want to describe yourself.

Eighty Eight Royale LSS shows soft, warm grip, power windows, automatic bucket

EIGHTY EIGHT ROYALE LSS



The Eighty Eight Royale LSS's four-wheel independent steering suspension and variable-rate steering contribute to its impressive road feel.



Left: Driver-oriented seating instrumentation includes tachometer and oil pressure, coolant temperature and voltage gauges. A three-spoke air bag is standard. Removable door weatherstripping adds extra weather protection.



Right: Capacity of maximum load available 2000 lbs. per axon, the electronic automatic transmission shifts adaptively.

- 3800 V6 ENGINE WITH TURBOCHARGED HEAD FLOW
- ELECTRONIC AUTOMATIC TRANSMISSION
- FRONT-BUCKET SEATS
- ARTIFICIAL INTELLIGENCE
- 4-WHEEL INDEPENDENT STEERING SUSPENSION
- 135 CUBIC FEET OF TRUNK SPACE
- FRONT-BUCKET SEATS WITH CENTER CONSOLE AND FLOOR SHIFTER
- THREE-SPEAK AIR BAG
- FULL-SCALE INSTRUMENTATION
- POWER WINDOWS AND DOOR LOCKS
- POWER DRIVER SIDE SEAT

- 100% OF ENGINE
- ELECTRONIC AUTOMATIC TRANSMISSION
- FRONT WHEEL DRIVE
- ANTI-LOCK BRAKES
- AVAILABLE TRACTION CONTROL
- 3-WHEEL INDEPENDENT SUSPENSION
- DRIVER AIR BAG
- FULL PANEL INSTRUMENTATION
- AIR CONDITIONING
- POWER WINDOWS AND DOOR LOCKS
- LOW LIFTED TRAIL WITH 15.5 CUBIC FEET OF CAPACITY

EIGHTY EIGHT ROYALE LS



The Eighty Eight Royale LS may just be the ideal full-size sedan. That's something that comes as no surprise to us, because it was with that benchmark in mind that we developed it to car in the first place. It's engineered for maximum performance, stability and control with features that include a 3800 V6 engine, front-wheel drive and four-wheel independent suspension. The engine, already considered world-class, was further improved this year with 22 separate refinements. Matched to an electronic automatic transmission, it pro-

vides an impressively smooth, refined level of performance—even in stop-and-go traffic. Individually contoured seats and rear seat heating and cooling create a spacious and comfortable environment for up to six passengers. Of course, a number of standard safety features are also provided, including a four-wheel anti-lock braking system and a driver-side air bag. In short, the Eighty Eight Royale LS is responsive, spacious, comfortable and safe—even if you expect everything from a full-size sedan, then this car will meet your expectations.



Fourteen refinements were made to the 3800 V6 engine for 1992. The result are better performance and increased output.



The rear seat heating/cooling vents enhance the comfort of all passengers.



Eighty Eight Royale LS' sleek quilted seating areas promote an available quality.

EIGHTY EIGHT ROYALE

Our approach to safety in designing the Eighty Eight Royale was no accident. In addition to one of the most comprehensive tested air bags in the industry, we included several features to help you avoid an accident in the first place. Anti-lock

brakes and front-wheel drive help to provide stability in rain, snow and ice. Rear-door child security lock and a power window lockout switch are reassuring features when carrying young children, allowing drivers to concentrate on the road. If an accident does

occur, reinforced steel, controlled crumple zones and a safety cage are designed to help keep the passenger area intact. These may not be the most noticeable or exciting features in the full-size Eighty Eight Royale, but they may be the most important.



A special master pillar within the ignition key helps prevent the Eighty Eight from being started by other means. The "TRUCK-KEY" power is standard on every Eighty Eight.



Front Eighty Eight Royale comes with a standard driver-side air bag. Side-impact air bags come with an air bag.



Rear-door child security locks prevent the rear doors from being opened from inside, providing a measure of reassurance when young children are on board.



A power window lockout switch allows the driver to prevent rear windows from being opened by rear seat passengers.

- 3000 V6 ENGINE
- ELECTRONIC AUTOMATIC TRANSMISSION
- FRONT-WHEEL DRIVE
- AIR-LOCK DOORS
- DRIVER-SIDE AIR BAG
- 4-WHEEL DISC BRAKES WITH ABS OPTION
- 10 AIR-BAGS AND 2 HEAD-UP SAFETY LIGHTS
- POWER WINDOWS WITH LOCKOUT SWITCH
- PASSLOCK THEFT DETERRENCE SYSTEM
- 16 WHEELS

CUTLASS SUPREME

Cutlass Supreme International Series

Cutlass Supreme SL

Cutlass Supreme S

Cutlass Supreme Convertible





CUTLASS SUPREME INTERNATIONAL SERIES



The powerful Zeta Dual Carb V6 engine system electronic fuel injection controlled by computer to precisely maintain the proper ratio using air-fuel mixture.

Your first look at the Cutlass Supreme International Series tells you it's a masterpiece of design. Your first drive will tell you it's a masterpiece of engineering. Its well-contained design and well-engineered components make it a car crafted for those who appreciate smooth, flowing lines, a tightly wrapped feel and an aggressive sense of the road. As soon as you turn the key, you'll sense that it's been given a heart, as well as 34-hp 24-valve, Twin

Dual Carb V6 heart. Your driving performance will be enhanced with anti-lock brakes, four-wheel independent suspension, steering wheel touch controls and Head-Up Display, a fighter-plane based technology which digitally projects your current speed into the windshield. The 1993 Cutlass Supreme International Series is a car that will make an inspired driving experience the norm, rather than the exception.



Steering wheel touch controls and Head-Up Display (shown above) help drivers keep their hands on the wheel and eyes on the road.

Cutlass Supreme International Series seats shown with racing seats available in available leather.



- 3.4 LITER TWIN CARBURETOR V6 ENGINE
- 4-SPD. ELECTRONIC SYNCHRONIZED TRANSMISSION
- FRONT WHEEL DRIVE
- 4-SPEAKER AM/FM/LOCK DISC STEREO
- 4-WHEEL INDEPENDENT SUSPENSION WITH THROTTLE LOCK BRAKE AND SHOCK ABSORBER SYSTEM
- 16 AIRBORNE WHEELS
- AUTOMATIC ELECTRONIC CONTROLLED CLIMATE AIR CONDITIONING
- FULL ANALOG MULTIMETER CLUSTER

• 5-CYLINDER V6
ENGINE

• 4-SPEED
AUTOMATIC
TRANSMISSION

• FRONT-WHEEL
DRIVE

• 4-WHEEL POWER
DISC BRAKES

• 15" ALUMINUM
WHEELS

• POWER STEERING

• AIR CONDITIONING

• FOGLAMPS

CUTLASS SUPREME SL



All Cutlass Supreme
models include
Bridgestone tires
that load, drive and
steer properly aligned.



We departed conventional wisdom when we created the Cutlass Supreme SL. One look at its sweeping, elegant design will tell you its anything but conventional. However, in addition to its contemporary style, this is a car with a sense of purpose. Its smooth, flowing lines incorporate body-side padding that helps parking lot drags. Its aerodynamic shape allows it to move efficiently and quietly across town or across

country. Beneath its exterior is a powerfully efficient engine, the 3.1-liter V6 (140 horsepower and an EPA-estimated 19 mpg city/30 mpg hwy), to help keep things firmly and securely planted. 18" wheels, four-wheel power disc brakes and four-wheel independent suspension are all standard. Stylish and practical—that's the Cutlass Supreme SL.



- CUTLASS V6 ENGINE
- AUTOMATIC TRANSMISSION
- FRONT-WHEEL DRIVE
- 4-WHEEL POWER DISC BRAKES
- 4-WHEEL INDEPENDENT SUSPENSION
- 16 WHEELS
- AIR CONDITIONING
- TWO-SPICE GALVANNEAL STEEL BODY PANELS
- FRANKLIN STEEL EXHAUST



CUTLASS SUPREME S



If the price of a car was based on its overall design and look, then the Cutlass Supreme S would cost a lot more than it does. Its affordable sense of style is matched by an equally agreeable sense of function. It starts with a comfortable interior with seating options for five or six. You also find 155 cubic feet of trunk capacity hidden beneath a sleek, aerodynamic exterior. All body panels (except metal) are comprised of two-sided galvanized steel to resist rust and

debris. All metal exteriors

make rust proofing obsolete. Overall ride and control of the road are enhanced by a four-wheel independent suspension and four-wheel power disc brakes. Even the windshield wipers have been cleverly designed with a wiper system that flows directly from the wiper arm to avoid freezing up in cold weather. But more impressive than its list of standard features is how affordable it still is. The Cutlass Supreme S.

All body panels (except metal) in all Cutlass Supreme S options (air-ride, automatic, etc.) are warranted against rust-through for at least 100,000 miles.

CUTLASS SUPREME CONVERTIBLE



Cutlass Supreme convertible features a glass top window for extra privacy and easy arm flexibility.



Right Cutlass Supreme convertible doors with safety areas revealed in available leather.



A new exclusive auto-down power is standard, making the driver's side lower all six positions at the touch of a button.

Depending on a convertible usually means giving up room and comfort — except with the Cutlass Supreme convertible. Because while everyone else let the sun get to their head, we designed this convertible with plenty of extras — like a glass back window, one-touch auto-down side windows, and a full headliner. Extra space is provided by a full-width rear



seat and a trunk with 12.1 cubic feet of capacity. In addition, you get the same responsive engine choice, four-wheel independent

suspension and power disc brake system found in all Cutlass Supremes. It's a rational way to have an irrational amount of fun.

POWER FOLDING TOP

6-SPEAKER SEATING
POWER DOOR
A POWER LOCK
ON AIR SEATING
SEATS (OPTION)

18" WHEELS

12.1 CUBIC
FOOT TRUNK

FOUR-WHEEL INDEPENDENT SUSPENSION

6.5 LITER V6
ENGINE
18" WHEELS
1.8 LITER TURBO
DUAL CAR V6

18" WHEELS POWER LOCK ON AIR SEATING

12" WHEELS

18" WHEELS, POWER DISC BRAKES

POWER WINDOWS

STAINLESS STEEL EXHAUST



A C H I E V A

•
Achieva SL

Achieva SC

Achieva SCX

Achieva S
•





Left: When custom called for an optional anti-lock braking system, or equipped with ABS II, standard on all Achieva Automobile Magazine called it "the best standard feature money can buy."



Center: The sophisticated, jet engine design of the Quad 4 engine provides responsive, reliable performance.

Right: The available 1300 T0 engine delivers 100 horsepower.

ACHIEVA SL

- 4-DOOR SLIMLINE DESIGN
- AUTOMATIC TRANSMISSION
- POWER STEERING
- 100% POLYURETHANE SEATING
- 1.9 LITER QUAD 4 ENGINE
- FULLY RECLINABLE FRONT SEATS
- 100% POLYURETHANE INTERIOR
- 100% POLYURETHANE HEADLINER
- 100% POLYURETHANE TRUNK LINER
- 100% POLYURETHANE CARPET
- 100% POLYURETHANE DASH
- 100% POLYURETHANE SEATBELT
- 100% POLYURETHANE TRUNK LINER



The 100% polyurethane seat is an adjustable driver seat for superior support. A unique seat structure with an aluminum seat structure over the seat frame. The seat is a true seat that will fully conform to your body and reduce repetitive seat wear.

The Achieva SL provides the features you'll expect to find on larger, more expensive cars. For example, a four-wheel anti-lock braking system and an automatic transmission are standard. So too is an advanced engine—a 2.3-liter

Dual Overhead Cam (DOHC) motor known as the Quad 4. It's engineered with a control module which automatically tunes the engine as you drive, helping assure optimal performance and efficiency. Even the headlamps feature Lexan® polycarbonate lenses for long-term durability and the

resistance. The interior, with eight separate storage areas, split-fuse down rear seats, automatic door locks, reclining front bucket seats and a rear seat heating outlet, will put everyone at ease. To put the driver at ease, we created a wrap-around dash with full instrumen-

tion and a seat with adjustable lumbar support. What it all means is that when you set your sights on the Achieva SL, there's no need to lower your expectations.



Left: The wraparound dash features full analog instrumentation. The steering column stalk controls include a one-step "back-to-park" feature and a "power" master switch that activates a power-boost from the engine even itself to help avoid freeze-up.

Below: The Computer Command Ride system allows you to select your own particular ride preference.



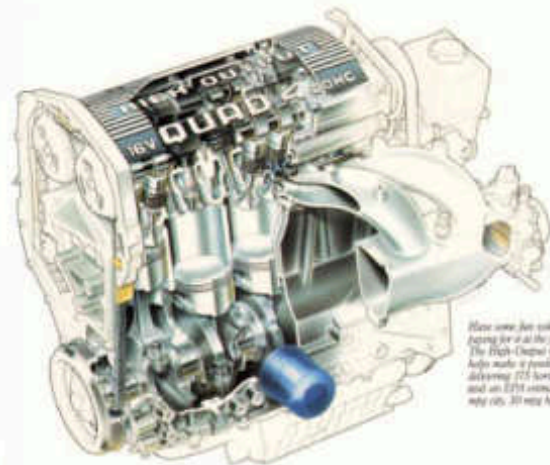
ACHIEVA SC

- 2.0L V-6 HIGH-OCTANE TURBO-CHARGED ENGINE
- 5-SPEED MANUAL TRANSMISSION
- POWER WINDOWS
- AIR-LOCK BRAKES
- 16" ALUMINUM WHEELS WITH PERFORMANCE TIRES
- FULL-LENGTH PATENTED STEERING
- FRONT IMPACT BARS WITH DRIVER SIDE LOWER PROTECTOR
- LEATHER-WRAPPED STEERING WHEEL
- 6-SPEAKER PREMIUM SOUND SYSTEM

Every once in a while you do have to let yourself go. That's what we did with the Achieva SC, and it's what you have the pleasure of doing every time you drive it. The fun starts quickly with this car's 175-horsepower High-Output Quad 4 engine and five-speed manual transmission. It continues

with a rear spoiler for improved air flow, a leather-wrapped steering wheel, racing front bucket seats with adjustable driver-side lumbar support, and a wrap-around dash with full analog instrumentation designed to put every control at your fingertips. You can also add available Computer Command Ride, which automatically adjusts to match conditions or gives

you the option of choosing your own particular ride setting—soft, automatic or sport—based on the conditions of the road and your own personal preference. The idea behind the Achieva SC was to create an intelligently engineered car that's also fun to drive. On board and we believe you'll agree.



Here's some fun without leaving you at the fuel pump. The High-Output Quad 4 helps make it possible, delivering 175 horsepower and an EPA-estimated 21 mpg city, 30 mpg hwy.

The American Achieva SCX earned the 1992 IMSA Automobile Magazine International Challenge Series season with victories at Watkins Glen and Lime Rock over the likes of Nissan 240 SX, Acura Integra, BMW 320i and Toyota Supra.



In the 1992 IMSA Firebird Endurance Series, the GM's Achieva SCX was victorious in its 24 Hours of Watkins Glen, defeating the Ferrari 300, the Mercedes 240Z and Dodge Stealth 200 — cars that cost thousands more.



Every Achieva SCX is powered with the 195-horsepower Oldsmobile Quad 4 engine exclusive to Oldsmobile.

MOTORSPORTS



We can be seen most dramatically

Our philosophy in racing is this: The knowledge we gain at the racetrack should be applied to the cars you can buy. This racetrack to real world evolution can be seen most dramatically

in our newest Achieva model — the SCX. With the exception of the decals and some specific racing-oriented safety equipment, this is the same car you've seen us competing with on the track. So the next time you see this car in the winner's circle, remember, you can also drive it in your circles.

195-HORSEPOWER
OLDSMOBILE QUAD 4 ENGINE

10-SPEAKER PREMIUM
TELEVISION SYSTEM

MODIFIED
COMPUTER
COMMANDER
PACKAGE INCLUDING
TWIN SEAT
STANDARD SEAT

ANTI-LOCK BRAKES

14" 5-SPEAK
ALUMINUM
WHEELS

HYDRATED PUMP
PROGRAM

COOL STEERING
STEEL EXHAUST

FULL ANALOG
INSTRUMENTATION

ACHIEVA SCX



Every 1992 Achieva SCX model comes with the 195-horsepower 19-valve V6, an engine exclusive to Oldsmobile and the same engine found in the Achievas we race. Other features direct from race competition include twin rear stabilizer bars and a four-cam, six-disc clutch which is smoother to

engage and makes shifting easier. In addition, a whole series of noise reduction enhancements first appeared last spring on the SCX. They include a refined air induction system, laminated engine cover and a complete acoustic package — items now standard on every Achieva model.



ACHIEVA S

- 2.3 LITER QUAD ENGINE
- FRONT AIRBAG
- FRONT WHEEL DRIVE
- AIR-LOCK BRAKES
- FULL SHOCK ON FRONT ENDS
- POWER STEERING
- AUTOMATIC PARKING BRAKES
- REAR DRIVE SHAFT SECURITY LOCK
- WILLIAMS FRONT SUSPENSION
- REAR AIR HEATING OUTLETS



To provide a true test of this car's quality, A.C.L. and independent auto



motive testing company matched it against two of the industry's most

established benchmarks—Honda Accord EX and Toyota Camry EX.

They tested it in the most objective setting possible—100,000 real

world miles. The result? The Achieva S outperformed the Accord and Camry in total cost,

which includes maintenance, repair and operating costs. While

your experience may vary at times, Achieva S models driven

completed the test without needing a single repair to their standard Quad OHC engine. One of

the reasons may be because the Quad OHC has fewer parts which

can't break down, with an integrated direct ignition system eliminating the need for spark plug

wires, PCV valves and timing adjustments. Beyond the 100,000

mile test, when you drive an Achieva S for a number of years, you'll discover the long-term durability of its stainless steel exhaust and two-piece galvanized steel

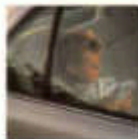
body panels. In a real-world test, or in your real world, the Achieva S reaffirms quality.

Right side: The Quad OHC engine features a Super Air® timing system—resulting in reduced vibration and a smoother engine idle.



Right center: For storage convenience, the available, 600-600-600 seat provides access to its trunk, letting you carry long or odd-shaped items.

Right bottom: Cliff will help to help provide another thoughtful place to store items.



Left side: Power door locks with a child-safety locking feature are standard on all Achieva models.

Left center: Many cars today offer handy cup holders—many. Achieva includes them in both the front and rear.

Left bottom: Map pockets integrated into the driver and passenger side doors provide convenient storage.

CUTLASS CIERA

Cutlass Ciera SL

Cutlass Ciera S

Cutlass Cruiser SL

Cutlass Cruiser S



- 3300 V6 ENGINE
- AUTOMATIC TRANSMISSION
- FRONT WHEEL DRIVE
- DRIVER-SIDE AIR BAG
- POWER BRAKES
- POWER STEERING
- AIR CONDITIONING
- AUTOMATIC POWER DOOR LOCKS
- POWER TRUNK RELEASE



CUTLASS CIERA SL

How do you create a car with enduring value? It takes more than a proven design—it takes a commitment to constant improvement. In the 11 years since the Cutlass Ciera SL was first introduced, we've incorporated more than 2000 refinements. This year

we added a driver-side air bag and made it standard on every SL model. We also improved the chassis to provide even better stability during windy conditions. The suspension was fine-tuned to provide an even smoother ride. Some things, though, don't change. Like a lot of standards

features you can truly be comfortable with—a heads-up 3300 V6 engine, automatic transmission, air conditioning and power automatic door locks. One other thing that's unchanged is our commitment to making the Cutlass Ciera SL a great all-around car.



Along with Cutlass Ciera SL, drivers with seating areas equipped with available feature.

Every Cutlass Ciera SL comes with a standard driver-side air bag, and the 1991 4-door model also has side air bags, even with an air bag.



Functional and comfortable are always the standard because you'll call an air conditioning unit and glass equipment.

CUTLASS CIERA S



No matter how you measure quality, the Cutlass Ciera measures up. In the recent J.D. Power and Associates 1992 Initial Quality Study, the Cutlass Ciera was ranked in the top ten among over 140 different models. It was also ranked best model in initial quality in its price class—\$12,000-\$13,333*. Of course, the Cutlass Ciera's quality comes as no surprise to

us. Because 95% of all the Cutlass Cieras ever sold are still on the road (based on F.L. Park magazine data, 1982-1990). That's 95% of more than two million cars sold in the past ten years. Funny, isn't it, that many other manufacturers never seem to talk about numbers like this. Then again, maybe they don't have a quality story like this to report.



A cutlass is never a drop-out in accidents or in parts.

Our commitment to quality and continuous improvement stands for a rigorous and ongoing safety process, another standard feature that's part of every Cutlass Ciera. Exposure to freezing temperatures, water, salt, road grime and engineering results are a part of the conditions all subjected to during testing.

*As ranked in J.D. Power and Associates' Initial Quality Study. ©1992 Oldsmobile. All rights reserved. Oldsmobile, Cutlass, the Oldsmobile logo and Cutlass Ciera are trademarks of Oldsmobile, a division of General Motors Corporation. All other trademarks are the property of their respective owners.



- ▶ 2.8-LITER 4-CYLINDER ENGINE
- ▶ AUTOMATIC TRANSMISSION
- ▶ FRONT-WHEEL DRIVE
- ▶ POWER WINDOWS
- ▶ POWER SEATING
- ▶ AUTOMATIC POWER DOOR LOCKS
- ▶ 12 WHEELS WITH 16-VALVE WHEEL COVERS
- ▶ FULL-DEPTH HANDBRAKE WITH LOCKING AND EASY-ON



CUTLASS CRUISER SL

How long will it take to appreciate the versatility of the Cutlass Cruiser SL wagon? How about a weekend? If you were to take the Cutlass Cruiser SL wagon home for just one weekend, you'd quickly appreciate its value. Taking the kids on an outing? The standard

third seat provides additional seating room for them. Hauling some building materials? The rear two seats fold flat to provide 71 cubic feet of cargo space, easily accessible through the flip-up rear window or lift gate. Going camping? The Cutlass Cruiser can tow

the trailer, no problem. Got a long trip in mind? Fuel efficiency is a plus, with an EPA-estimated 30 mpg city, 26 mpg hwy with the standard 3000 V6 Chevrolet. The Cutlass Cruiser SL can handle whatever situation may arise.

Flexibility is provided by (left to right): a third seat that increases seating capacity to eight passengers, middle and rear seats that fold flat to provide 71 cubic feet of capacity, and a flip-up rear window for easy loading. A retractable cargo cover and a rooftop luggage rack are standard on SL.



The Cutlass Cruiser SL is available with a choice of colors, styling and optional features to meet your specific driving needs.

- 2000 IN STOCK
- AUTOMATIC OVERDRIVE
- POWER-LOCK DRIVE
- POWER BRAKES
- POWER STEERING
- AIR CLIMATE CONTROL
- 66 ADJUSTING THIRD SEAT
- SPLIT-FOLDING REAR SEAT BACKS
- POWER FRONT LOCKS AND FOLDABLE SEATBELT
- RAIL-OUTSIDE MIRRORS
- ROOFTOP LUGGAGE CARRIER
- SIDE WINDOW DEFROSTERS

SILHOUETTE



- 5-VALVE IN-ENGINE
- AUTOMATIC TRANSMISSION
- FRONT-HEEL DRIVE
- 12 ALUMINUM WHEELS
- 4-DOOR BRAKES
- POWER STEERING
- CRUISE AND AIR CONDITIONING
- AIR CONDITIONING WITH FRONT AND REAR VENTILATORS
- FULL 24-HOUR CUSTOMER SERVICE
- POWER WINDOWS
- POWER LOCKS
- 10 SPEAKERS
- SUNROOF
- SUNSHIELD WITH COMPASS AND THERMISTOR DISPLAYS



SILHOUETTE

All minivans can comfortably handle a variety of cargo loading assignments. The Silhouette minivan is designed to handle people just as comfortably for starters, all seats are individually contoured and available with

leather trim. Plus, the five rear seats can be folded into tables. They are easily removable, providing numerous seating options. At only 24 pounds each, they're out in a snap, fast, by incorporating 15 different acoustical reflex-

ments. We made the Silhouette one of the quietest minivans in the industry. For responsiveness, we gave it an available 3800 V6 engine—at 170 horsepower. It's one of the most powerful engines offered in a minivan. Or if you prefer, the standard 314-hp engine is one of the most fuel-efficient, with an EPA estimated 18 mpg city, 23 mpg hwy. Punks for con-

venience, we gave it available features like an electronic automatic transmission and a leather-wrapped steering wheel, and standard features like antilock brakes and front-wheel drive. Revert yourself with the versatility of a minivan and the comfort of a luxury sedan. Revert your self with a Silhouette.



Enter information is provided by the Silhouette's ready-to-use (and) steering wheel. Such controls are available.

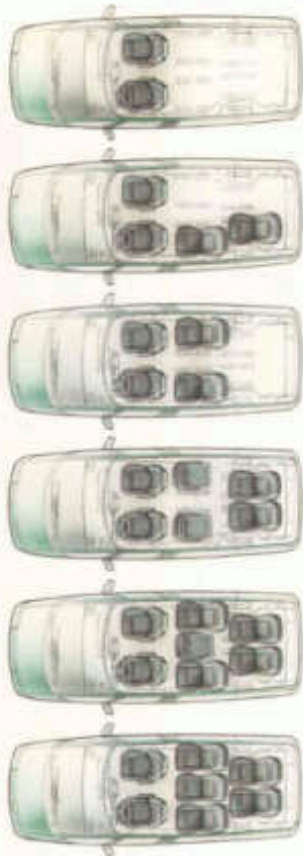
Right: Six industry first, the available electronic sliding door easily opens and closes at the touch of a button. It's up to 30 feet away. (See model year availability.)



At only 24 pounds each, Silhouette's individual seats can be out in a snap.

Right: Silhouette shows you loading your minivan in available leather.

Right: A variety of built-in seating options accommodate just about any seating or cargo need.



B R A V A D A



FULL ANALOG INSTRUMENTS

WILLIAMS FRONT SEAT BUCKET WITH COCKER-SEAT FRONT 6-WAY ELECTRIC AND POWER LUMBAR SUPPORT

4-SPEAKER PREMIUM SOUND SYSTEM

ANTI-LOCK BRAKES

POWER LOCKS

ENGINE CONTROL LOCKS

POWER WINDOWS

POWER OUTSIDE MIRRORS

POWER REAR TRAILER LATCH RELEASE

BRAVADA



You expect certain quality from a sport utility vehicle. And you expect certain qualities from an Oldsmobile. So it should be no surprise that the all-wheel drive Bravada comes with a high degree of luxury that includes a refined, comfortable interior and a smooth, quiet ride. To provide all this, we've given the Bravada an advanced electronically controlled automatic transmission, whose smooth performance has received rave reviews. Other comforts include a standard six-way power driver's seat with power lumbar support, a leather-wrapped steering wheel, an overhead console displaying the outside temperature, and seating areas that are trimmed in available leather. Whether you find yourself on the roughest or smoothest of roads, the Bravada will take care of you.

Bravada drives with seating areas trimmed in available leather.



The overhead console provides both a storage area and a digital compass and temperature display.



Bravada's standard seven-point air bag is designed with the auxiliary power outlet.



All leather-trimmed seating areas and steering wheel are standard features on Bravada.



The rear bench seat folds down to provide a cargo area 79 inches long and a capacity of more than 70 cubic feet.

Road conditions vary.
(Left to right)
Asphalt
Dirt
Snow/Ice
SmartTrak system
adjusts just in time.



4-CYLINDER ENGINE
VS. ENGINE WITH
CENTRAL FUEL
PUMP INJECTION

ELECTRONIC
CONTROLLED
AUTOMATIC
TRANSMISSION

ANTI-LOCK BRAKES
AND 4-WHEEL
DISCS (OPTIONAL)

POWER STEERING

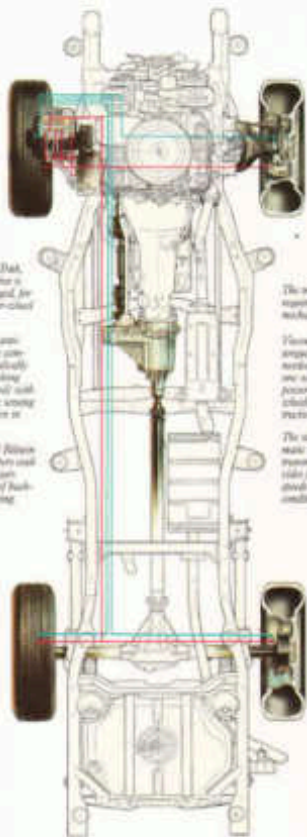
HIGH-CAPACITY
HEAVY-DUTY
RIVETS

ADJUSTABLE
WIPER FOR VARIOUS
CARRIERS

CROSS CONTROL

REINFORCED
FRONT-ENGINES AND
TOW BAR

REAR WHEELS
WITH TRAILER



With SmartTrak, all-wheel drive is always required, for full-time four-wheel traction.

Four-wheel anti-lock braking system (optional) provides braking (shown as red) with air electronic control (shown as blue) to help.

Our standard 4-wheel disc brakes use all the extra air and torque of both wheels during.

The transfer case supports no-shifting mechanism.

Transfer case lock engages (shown as red) to hold rear wheel slip, power is sent to the other (shown as blue) wheel.

The standard over-drive transfer case provides four forward gears to match conditions.


SmartTrak, Bravada's standard road management system, combines all-wheel drive and four-wheel anti-lock brakes to instantly react to road conditions. While many four-wheel-drive vehicles require you to shift in and out of four-wheel drive as the road varies, the SmartTrak system goes one step further by automatically adjusting to the road. That's reassuring, considering the unpredictability of roads and weather. The Bravada does all this in a quiet, efficient manner. One of the reasons is the fact that constant velocity joints are used in the front axle shafts to minimize noise. In fact, in highway or city

BRAVADA

traffic, you'll never even know the SmartTrak system is there, except for the improved traction, stability and control it provides. In addition, while four-wheel-drive vehicles have a fixed front- and rear-wheel power ratio, SmartTrak sends as much torque as needed to each wheel. With its potent 4.3-liter Vortec V6 engine and available towing package, the Bravada has enough muscle to tow up to 6,250 pounds (including passengers, trailer cargo and equipment). The ability to help maintain traction and control is what SmartTrak is all about. It makes the Bravada a more intelligent way to travel.



A 200 horsepower
4.3-liter Vortec V6
provides more
power than other
V6 sport utility
vehicles.

 Oldsmobile

THE POWER OF INTELLIGENT ENGINEERING.