
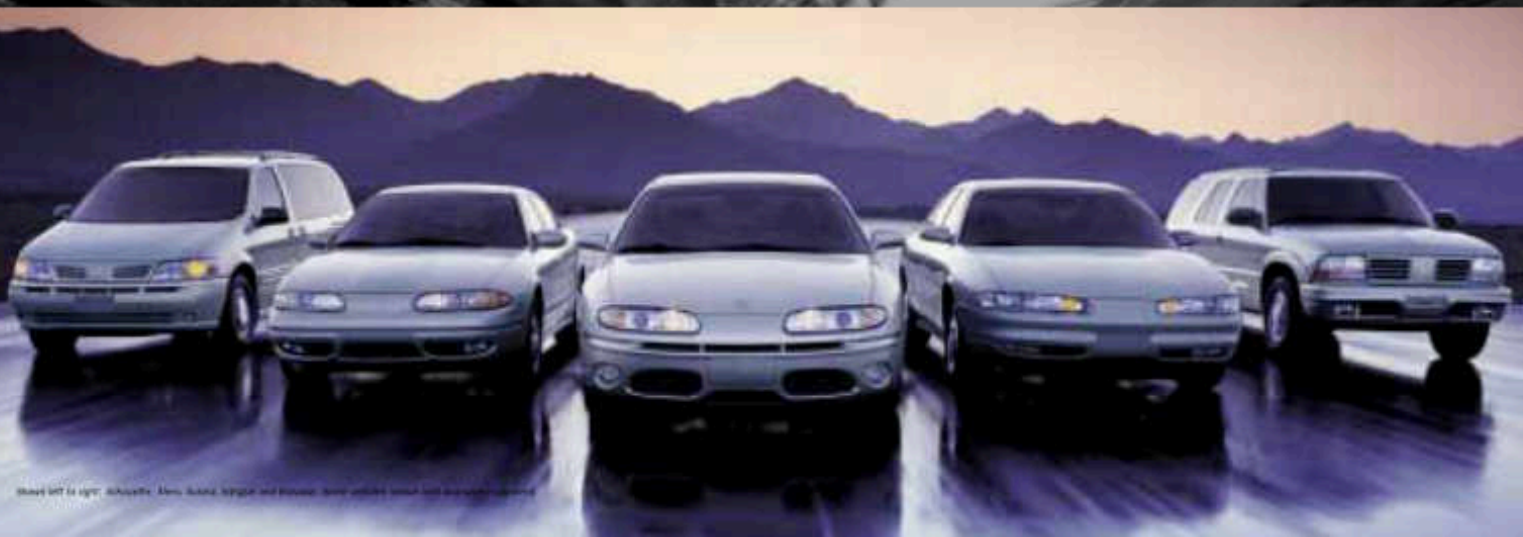


2001  Oldsmobile



2001  Oldsmobile

Each of the five Oldsmobile vehicles shares a common strand of automotive DNA. You can see the family resemblance in the faultily drawn lines. And you'll feel it from the first turn of the wheel. Responsive engines. Agile suspensions. Smooth road manners. An unexpected level of sophistication. Whatever your choice, Oldsmobile has five unique ways to move you.



AURORA 3

INTRIGUE 9

ALERO 15

SILHOUETTE 21

BRAVADA 27

Always wear your seat belt. Always drink and drive responsibly. ©2001 Oldsmobile



AURORA

Agility. Remarkable agility. If these two words don't come to your mind after test-driving Aurora, you haven't been paying attention. In fact, it may just be one of the most sure-footed and responsive luxury sedans you're likely to encounter. With its solid unitbody chassis, all-independent suspension and precise magnetic rack-and-pinion steering, Aurora gives luxury some new twists. And a few curves.

AN INTERIOR SO WELL-TAILORED, YOU'LL WONDER HOW THEY EVER GOT YOUR MEASUREMENTS.



Aurora 3.5 interior in Neutral with Dark Neutral Accents. Shown with available equipment.

With standard leather-trimmed seating areas, burlled walnut accents and the standard OnStar® service, Aurora surrounds you with luxury and peace of mind.



A U R O R A

Part of what makes Aurora such a tenacious performer on curves is the **Enhanced Agility System**. Standard on the 3.5 and 4.0 Aurora, this system consists of an array of 19 components and systems that work in concert to provide instant response to the driver's input. From the perfectly weighted feel of the steering wheel to the optimized caster settings and engine refinements, the components that contribute to feeling connected to the road have been scrupulously enhanced.

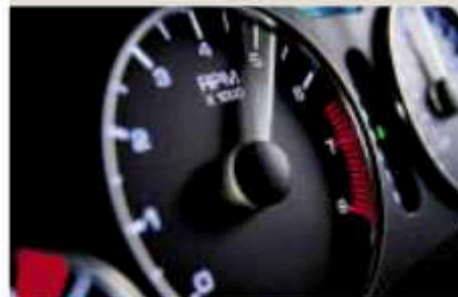


FAST RESPONSE TO THE ROAD

As part of the Enhanced Agility System, the **lightweight aluminum suspension components** reduce unsprung weight and enhance suspension response. So when you turn the wheel into a corner, you'll get a fast, faithful reaction.

FEEL THE ROAD WITHOUT HEARING IT

Also part of the system are **4-wheel disc brakes with antilock braking** for strong, stable braking, **magnetic variable-assist power rack-and-pinion steering** for precision and ease of steering, **low-profile tires** and **optimized caster settings** for sure-footed cornering. Separate **suspension cradles** better isolate the cabin from road noise.



POWERFUL, RESPONSIVE ENGINES

For exceptional power and response both engines have a **center-feed induction system**, **high-swirl combustion chambers** and **low-friction roller cam followers**.

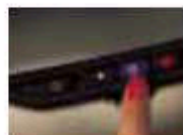
AURORA STANDARD FEATURE HIGHLIGHTS (3.5 & 4.0)

Powertrain and Chassis • 3.5-liter DOHC V6 engine with sequential fuel injection • 4-speed electronic-shift transaxle with automatic overdrive • Stainless steel dual exhaust system • Unitized body structure • Independent strut front suspension with coil springs • Independent semi-trailing arm rear suspension with cast aluminum arms, lateral links and coil springs • Front



and rear stabilizer bars • 4-wheel disc brakes • Magnasteer variable-assist power rack-and-pinion steering • 16-inch aluminum alloy wheels with Goodyear® P225/60R16H performance tires

Standard features on 4.0 • 4.0-liter DOHC V8 engine with sequential fuel injection • 17-inch aluminum alloy wheels with Michelin® P235/55R17H performance tires • All-speed traction control • Precision Control System



Safety and Security • OnStar* • Dual frontal air bags and front-seat side-impact air bags** • 3-point seat-mounted front safety belts • Rear outboard and center 3-point safety belts • Rear child-seat upper tether anchors • 4-wheel antilock brakes • Rear child-security door locks • Daytime running lamps • Driver-controlled power window lockout • Pulse-type windshield wipers/washer • Front and rear foglamps • Self-aligning front head restraints

Driver Controls • Full instrumentation • Gated console-mounted shifter • TILT-Wheel adjustment • Cruise control • Power trunk and fuel filler releases • Backlit switches

Interior • Contour front bucket seats • Driver-side 8-way power seat with power lumbar adjustment • Rear bench seat with integrated headrests, center fold-down armrest, and trunk pass-through • Burled walnut center console and door trim • Leather-trimmed seating areas • Leather-wrapped steering wheel • Driver and front passenger sun visors • Automatic climate control • Outside temperature display • Cabin air filtration system with replaceable cartridge • Driver information system • Power windows with driver/passenger auto-down • Remote-control keyless entry system • Steering wheel touch controls • Illuminated entry/exit package • Front and rear reading lamps • Dual illuminated vanity mirrors • Automatic headlamp control • Auxiliary power outlets

Standard features on 4.0 • Rear-seat storage armrest with cupholders • 8-way power front passenger seat with power lumbar adjustment • Automatic dual-zone climate control with rear seat heating/cooling • Driver seat and outside mirrors memory feature • Automatic moisture-sensitive windshield wipers • Universal garage door opener

Audio System • AM/FM stereo and CD/cassette player • 6-speaker Dimensional Sound system • Diversity antenna system

Exterior • Halogen headlamps with projector-type low beams • Solar Ray tinted glass • Body-color side moldings and door handles

Standard features on 4.0 • Automatic moisture-sensitive windshield wipers

AURORA AVAILABLE PACKAGES

The Passenger Comfort, All-weather, and Convenience Packages are standard on 4.0 and available on 3.5. The Gold Graphics Package and the Bose® Premium Sound System are available on both models.

Passenger Comfort Package • 8-way power front passenger seat with power lumbar adjustment • Rear storage armrest with cupholders • Automatic dual-zone climate control

All-weather Package • All-speed traction control • Precision Control System (Passenger Comfort Package required)

Convenience Package • Driver seat and outside mirrors memory feature • Automatic moisture-sensitive windshield wipers • Auto-dimming Electrochromic rearview mirror with compass • Universal garage door opener

Gold Graphics Package • Gold finish on hood emblem and rear panel script

Interior Dimensions	3.5	4.0	Exterior Dimensions	3.5	4.0
Headroom, f/r	38.6/37.7 in	38.6/37.7 in	Wheelbase	112.2 in	112.2 in
Legroom, f/r	42.5/38.0 in	42.5/38.0 in	Overall length	199.3 in	199.3 in
Shoulder room, f/r	58.9/58.4 in	58.9/58.4 in	Width	72.9 in	72.9 in
Hiproom, f/r	55.4/56.1 in	55.4/56.1 in	Height	56.7 in	56.7 in
			Curb weight	3686 lb	3803 lb
Powertrain	3.5	4.0			
Engine	3.5 liter DOHC V6 (212 cu in)	4.0 liter DOHC V8 (244 cu in)			
Horsepower	215 @ 5600	250 @ 5600			
Torque (lb-ft)	230 @ 4400	260 @ 4400			
Fuel Injection	Sequential	Sequential			
Transaxle ratio	3.29	3.71			



Aurora 4.0 in Sterling with available chrome wheels.

See your dealer for complete details.

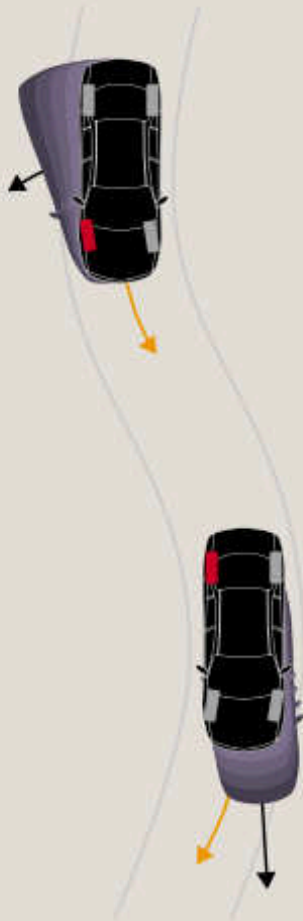
*One-year OnStar safety and security contract is standard. Call 1-800-ONSTAR-7 for system limitations and details.
**Always use safety belts and proper child restraints, even with air bags. Children are safer when properly secured in a rear seat. See Owner's Manual for more safety information.

INTRIGUE

Is it possible for a machine to inspire confidence? Can a car move you to start a collection of favorite roads? Can it motivate you to pursue destiny around every bend? If it's *Intrigue* by Oldsmobile, it will do all that and more. Its reflexes are precise, its comfort soothes the mind and body. And the power of its award-winning 3.5-liter V6 engine might cause you to start your own frequent-driver club.

AWARD-WINNING PERFORMANCE

The 215-hp engine is among the most powerful in its class. Like a sprinter, the DDHC, 24-valve V6 excites with explosive performance. But like all champions, it always has extra strength in reserve, thanks to a broad, flat torque curve peaking at 230 lb-ft.



PRECISION CONTROL SYSTEM (PCS)

The available Precision Control System (PCS) enhances safety by working with Intrigue's inherently balanced performance. By monitoring steering angle, turning rate and lateral g's, the system can selectively apply any of the four brakes to help counteract a front- or rear-end slide. As the first midsize sedan to offer this advanced system, Intrigue is at the cutting edge of stability-enhancing design.

I N T R I G U E

Intrigue caresses its occupants with the same fervor it grips the road. Its inviting interior is specially equipped to promote a comfortably acute interplay between you and the asphalt. An electronic air-conditioning system with rear-seat heat ducts creates a soothing environment in which to explore the longer road home. And with available leather-trimmed front seats that embrace you in supportive comfort, you might find yourself more refreshed and relaxed at journey's end than at the start.

INTRIGUE STANDARD FEATURE HIGHLIGHTS FOR ALL MODELS

Powertrain and Chassis • 3.5-liter Twin-Cam V6 engine with electronic 4-speed automatic transmission • Hydraulic engine mounting system • Reduced-maintenance powertrain features • Front-wheel drive • 4-wheel independent suspension • 4-wheel disc brakes • Magnetic speed-sensitive variable-assist rack-and-pinion steering • Stabilizer bars, front/rear • 16-inch aluminum alloy wheels • P225/60R16 radial touring tires



Safety and Security • Safety-cage construction • Dual frontal air bags* • 3-point outboard safety belts with rear center lap belt • Rear outboard adjustable shoulder belt guides • 4-wheel antilock brakes • Brake/transmission shift interlock • Daytime running lamps • Halogen headlamps with automatic control • Cornering lamps • Variable-intermittent wiper system • Side window and electric rear window defoggers • Automatic programmable power door locks • Rear-door child-security locks • PASSLock II vehicle security system • Front door warning reflectors • Maintenance-free battery with battery-rundown protection.

Interior • Contoured front bucket seats • Elevated "theater-style" rear bench seat with folding armrest • Full instrumentation • Center floor console • Dash-mounted ignition and hazard switches • 4-spoke steering wheel with adjustable steering column • Steering wheel-mounted cruise control with resume and acceleration features • Power trunk release • Electronic air conditioning • Rear-seat air ducts • Storage: front center armrest, locking glove box, driver's personal compartment, dual front and rear cupholders, and map pockets in doors and front seatbacks • Full cut-pile carpeting in cabin • Carpeted front and rear floor mats • Assist grips for all outboard passengers • Lighting system: courtesy, glove box, trunk and reading lamps, plus illuminated entry/exit • Covered vanity mirrors • Visors with sunshade extenders • Power windows with driver's-side auto-down • Auxiliary 12-volt power outlet • Retained accessory power • Air filtration system • AM/FM stereo radio with auto-reverse cassette player • 4-speaker extended-range sound system

Exterior • "Liquid crystal" headlamps and taillamps • Tinted windows with solar-control windshield and rear window glass • Rear window grid radio antenna • Dual power foldaway outside mirrors (black on GX; body color on GL and GLS) • Gas-charged hood and non-intrusive trunk struts • Body-color side moldings



Intrigue GLS in Black Onyx. Shown with available Precision Sport Package.

*Always use safety belts and proper child restraints, even with air bags. Children are safer when properly secured in a rear seat. See Owner's Manual for more safety information.

INTRIGUE MODEL-SPECIFIC FEATURE HIGHLIGHTS : S - Standard/A - Available

Option Package Discounts. You can realize substantial savings with any of our option packages: GX with Driver Control Package = GX¹, GL with Premium Leather Package = GL², and GLS with Precision Sport Package = GLS³

	GX	GX ¹	GL	GL ²	GLS	GLS ³
Remote-control keyless entry system	-	S	S	S	S	S
Full-function traction control system	-	S	S	S	S	S
6-way power driver's seat	-	S	S	S	S	S
AM/FM stereo with CD and cassette players, plus 6-speaker Dimensional Sound system	-	S	S	S	S	S
Leather-wrapped steering wheel, armrest and shifter knob	-	S	S	S	S	S
60/40 split-folding rear seatback	A	A	S	S	S	S
Foglamps	-	-	S	S	S	S
Steering wheel-mounted audio touch controls	-	-	S	S	S	S
Automatic dual-zone climate control system	-	-	S	S	S	S
Lighted visor vanity mirrors	-	-	S	S	S	S
Leather-trimmed seating areas	-	-	-	S	S	S
6-way power heated front seats	-	-	-	S	S	S
Faux woodgrain interior accents	-	-	-	-	S	S
OnStar**	-	-	-	-	S	S
Power sunroof with sliding/tilting glass panel	A	A	A	A	-	S
Rear decklid spoiler	A	A	A	A	-	S
Precision Control System (PCS)	-	A	A	A	-	S
16-inch chrome-plated aluminum alloy wheels	-	-	A	A	-	S
Bose® Premium Audio System	-	-	A	A	A	A

Interior Dimensions

Headroom, f/r	39.3/37.4 in
Legroom, f/r	42.4/36.9 in
Shoulder room, f/r	58.0/57.0 in
Hiproom, f/r	55.6/54.8 in

Powertrain

Engine	3.5 liter (212 cu in)
Horsepower	215 @ 5600 rpm
Torque (lb-ft)	230 @ 4400 rpm

Exterior Dimensions

Wheelbase	109.0 in
Length	195.9 in
Width	73.6 in
Height	56.6 in
Curb weight	3434 lb

Fuel injection	Sequential port
Transaxle ratio	3.05 (3.29 with PCS)
Estimated mileage	19 city/28 hwy

**One-year OnStar safety and security contract is standard. Call 1-800-ONSTAR-7 for system limitations and details. See your dealer for complete details.

WHILE INTRIGUE TAKES CARE OF THE ROAD, IT TAKES EVEN BETTER CARE OF YOU.



Intrigue GLS with leather-trimmed seating in Neutral.

Intrigue's available leather-trimmed seating areas, supportive seats and wealth of features add a level of sophistication to its performance personality.



ALERO

Alero adds an altogether more exhilarating dimension to everyday driving. That's probably why Car and Driver said, "Alero scores a 10 in our overall handling category,"¹ yet with a roomy interior and standard equipment that's unheard of simply not available on the competition,² there are no sacrifices in your quest for comfort, versatility, safety and value in one fun-to-drive package.



YOU'LL RUN OUT OF ROAD BEFORE YOU'LL RUN OUT OF COMFORT.



Alero GLS Sedan with leather-trimmed seating in Neutral.

*With available leather-trimmed seating areas,
room for five and an airy, well-appointed cabin,
Alero takes the dull out of everyday driving.*



A L E R O

What makes Alero more fun? We call it the **Active Response System**, and it helps you grab hold of any corner you choose. Sixteen individual features work together to actively connect you to the road with more refined manners, more agile responses and a more accurate feel for the car. That translates to you as nimble handling to help hug hair-pin turns. A smooth, forgiving ride to soften up rough spots. Swift, refined power right when you want it. The tools you need to dial up the fun factor and your driving confidence, whether you're stopping, starting or steering.

CONFIDENCE-INSPIRING BRAKING

Alero's responsive **4-wheel Disc Brakes** provide firm, positive braking with reduced fade.

STOP AND GO WITH CONTROL

The **Antilock Braking System** helps you maintain steering control when braking hard on slick roads. Under acceleration, **All-speed Traction Control** enhances traction by reducing wheelspin on most slippery surfaces.

PRECISION STEERING

Direct-mounted Rack-and-Pinion Steering provides a feeling of precision, no wandering or drifting off course. And for hands-on control, the **Thick Steering Wheel** is easy to grasp for a feeling of confidence right down to your fingertips.

BORN TO BE NIMBLE

A **4-wheel Independent Suspension** lets each wheel respond individually to ensure nimble handling and a smooth ride. **Low Mass Aluminum Components** further help keep the tires planted to the pavement for a smooth, road-hugging ride.



ALERO STANDARD FEATURE HIGHLIGHTS FOR ALL MODELS

Powertrain and Chassis • Front-wheel drive • Rigid body structure • 4-wheel independent suspension • 4-wheel disc brakes • Rack-and-pinion steering • Low-profile P215/60R15 radial touring tires • Touring suspension



Safety and Security • Safety cage construction • Dual frontal air bags* • 3-point outboard safety belts • Rear outboard adjustable shoulder belt guides • Child restraint upper tether anchors • All-speed traction control • 4-wheel antilock brakes • Brake/transmission shift interlock (automatic transmission) • Daytime running lamps with automatic lamp control • Pulse wipers • Front, side and electric-rear window defoggers • Automatic power door locks with lockout prevention • Rear-door child-security locks (Sedan only) • Full interior courtesy lighting with illuminated entry/exit • PASSLock II theft-deterrent system • Battery-rundown protection

Seating and Driver Controls • Driver-oriented controls with dash-mounted ignition and hazard switches • Full instrumentation • Contoured, reclining front bucket seats • Adjustable steering column • Center floor console • Power trunk release • 70/30 split-folding rear seat



Comfort and Convenience • Air conditioning • Rear-seat heat ducts • Cruise control • AM/FM stereo/CD with 4 speakers • Solar-coated tinted glass with UV protection • Extensive interior storage • Front and rear cupholders • Easy-entry feature (Coupe only) • Last-door-closed locking feature • 12-volt auxiliary power outlet • Sun visors with covered vanity mirrors • Ashtray and lighter • Carpeted floor mats

Exterior • Rust- and dent-resistant steel body panels • 5-mph bumpers • Spring-away outside rearview mirrors (black on GX; body-colored on GL and GLS) • Rear window grid antenna



Alero GL Coupe in Black Onyx. Shown with available equipment.

*Always use safety belts and proper child restraints, even with air bags. Children are safer when properly secured in a rear seat. See Owner's Manual for more safety information.

ALERO MODEL-SPECIFIC FEATURE HIGHLIGHTS S - Standard/A - Available

	GX	GL1	GL2	GLS
2.4-liter DOHC 4-cylinder with electronic 4-speed automatic	S	S	S	-
3.4-liter SFI V6 with electronic 4-speed automatic	-	A	A	S
5-speed manual transmission (2.4-liter DOHC 4-cylinder)	A	-	A	-
Performance suspension with 16" performance tires	-	-	S	A
Foglamps	-	A ¹	S	S
Cloth-trimmed seating areas	S	S	S	-
Leather-trimmed seating areas	-	-	-	S
Leather-wrapped steering wheel and shift knob	-	A ¹	S	S
Driver's seat with power adjustable height and manual lumbar	-	S	S	-
6-way power driver's seat	-	A	A	S
Power windows with driver's auto-down	-	S	S	S
Remote-control keyless entry system	-	S	S	S
AM/FM stereo/cassette/CD, 8-speaker Premium Sound system	-	A ²	A ²	S
6-speaker Dimensional Sound system	-	S	S	-
15-inch aluminum wheels	-	A ¹	-	-
16-inch painted aluminum wheels	-	-	S	-
16-inch polished aluminum wheels	-	-	-	S
Power sunroof with sliding glass panel	-	A ²	A ²	A
Rear decklid spoiler	-	A ¹	A	S/A ¹

Interior Dimensions	Sedan		Coupe		Exterior Dimensions	Sedan		Coupe	
Headroom, f/r	38.4/37.0 in	38.4/36.5 in	38.4/36.5 in	38.4/36.5 in	Wheelbase	107.0 in	107.0 in	107.0 in	107.0 in
Legroom, f/r	42.2/35.5 in	42.2/35.5 in	42.2/35.5 in	42.2/35.5 in	Length	186.7 in	186.7 in	186.7 in	186.7 in
Shoulder room, f/r	53.6/52.6 in	53.6/54.6 in	53.6/54.6 in	53.6/54.6 in	Width	70.1 in	70.1 in	70.1 in	70.1 in
Hiproom, f/r	50.9/51.5 in	50.9/51.2 in	50.9/51.2 in	50.9/51.2 in	Height	54.5 in	54.5 in	54.5 in	54.5 in
					Curb weight	3046 lb	2997 lb	2997 lb	2997 lb

Powertrain	DOHC 4-cylinder		V6	
Engine	2.4 liter (146 cu in)		3.4 liter (207 cu in)	
Horsepower	150 @ 5600 rpm		170 @ 4800 rpm	
Torque (lb-ft)	155 @ 4400 rpm		200 @ 4000 rpm	
Fuel injection	Sequential port		Sequential port	
Estimated mileage city/highway	21/30 (manual); 21/29 (automatic)		21/32	

¹Requires Feature Package. ²Requires Sun and Sound Package. ³Standard on coupe and available on sedan. See your dealer for complete details.

SILHOUETTE

This year, Silhouette has even more to make every journey as enjoyable as the destination. In addition to a new look for the front and rear, there's third-row stowable seating with a rear cargo convenience center on GLS and Premiere to enhance versatility. The standard OnStar[®] equipment adds to your peace of mind, while the Premiere entertainment system lets the rear passengers enjoy music or a video or play a video game.



S I L H O U E T T E

Upscale, refined and always willing to please, Silhouette makes everyday errands and daily driving a breeze instead of a chore. With its wide variety of seating configurations, you can carry a combination of cargo and passengers with ample room for both. With the available third-row stowable bench seat, you also get a rear cargo convenience center that features hooks for grocery bags and secure storage for items you don't want shifting while driving. Clearly, Silhouette has options for any situation.



Premiere ENTERTAINMENT SYSTEM

The entertainment system on the Premiere model features a video cassette player with remote control, the largest factory-installed LCD color monitor*, input jacks for video games or camcorder and 4 pairs of wireless headphones.

ONSTAR

Standard on all models, the OnStar** service is designed to enhance your security while on the road. In the U.S. and Canada, wherever a cellular connection can be made, OnStar can pinpoint your location and automatically alert an OnStar Advisor in case of an emergency.



TRI-ZONE CLIMATE CONTROL

GLS and Premiere feature front dual-zone air conditioning that lets the front passenger select a different setting. Rear climate controls (available on GL, standard on GLS and Premiere) let rear passengers adjust temperature and fan speed independent of the main system.

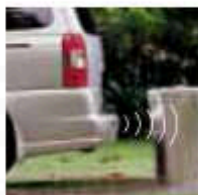


*Excludes all other GM models.

**One-year OnStar safety and security contract is standard. Call 1-800-ONSTAR-7 for system limitations and details.

SILHOUETTE STANDARD FEATURE HIGHLIGHTS FOR ALL MODELS

Safety and Security • OnStar* • Safety-cage construction • Dual frontal and front-seat side-impact air bags** • 3-point front and rear outboard safety belts with front pretensioners, plus rear center lap belt • Front shoulder-belt height adjusters • Rear outboard adjustable shoulder belt guides (GL only) • 4-wheel antilock brakes • Brake/transmission shift interlock • Multi-function alarm and lighting system • Automatic programmable power door locks with lockout prevention • Sliding-door child-security locks • Daytime running lamps



Comfort and Convenience • Air conditioning • Cabin air filter • TILT-Wheel adjustable steering column • Cruise control • Overhead console • Storage: locking glove box, console bin (except Premiere), rear cargo area bins, and cupholders for all seating positions • Lighting: overhead console with map lights, rear dome/cargo lamp, dome lamp override switch, second-row reading lamps and third-row roof rail reading lamps • Dual power outlets and auxiliary 12-volt power outlet • Retained accessory power



Seating and Trim • Reclining contour front bucket seats with folding armrest • Second-row folding captain's chairs • Front- and second-row passenger-assist grips • Carpeted floor mats

Exterior • Rooftop luggage carrier • Solar-treated windshield • Deep tinted glass for rear-side, rear-quarter windows and tailgate • Concealed front wipers • Body-color side moldings • Front and rear splash guards • Integrated windshield antenna • Dual sliding doors

Powertrain and Chassis • 3400 SFI V6 engine • Electronic 4-speed automatic transmission with overdrive • Front-wheel drive • Independent front MacPherson strut/rear twist axle and coil spring suspension • Reduced effort power rack-and-pinion steering • Maintenance-free battery • Stainless steel exhaust • Touring suspension



Silhouette Premiere in Black Onyx. Shown with available equipment.

SILHOUETTE MODEL-SPECIFIC FEATURE HIGHLIGHTS S - Standard/A - Available

	GL	GLS	Premiere
Full-function traction control system	A	S	S
Rear parking aid (shown left)	A ¹	A	S
Auxiliary rear-seat audio/climate controls	A	S	S
Driver Information Center	A	S	S
Universal garage door opener	A ²	S	S
AM/FM stereo radio with CD player	S	-	-
AM/FM stereo radio with CD and cassette players	A	S	S
AM/FM stereo radio with seek/scan tuning, in-dash 6-disc CD player	-	A	A
Tri-zone climate control system	-	S	S
Third-row 50/50 split-folding bench	S	-	-
Third-row stowable bench with rear cargo convenience center	-	S	S
Third-row captain's chairs	-	A	A
Leather-trimmed seating areas and steering wheel	-	S	S
8-way power front seats with driver-side memory	-	S	S
Heated front seats	-	A	S
Power-sliding passenger-side door	A	S	S
Power-sliding driver-side door (midyear introduction)	-	A	A
15-inch aluminum wheels	A	-	-
16-inch aluminum wheels	-	S	S
16-inch chrome wheels	-	A	A
Towing Package	A	A	A

Interior Dimensions

Headroom, f/m/r	39.9/39.3/38.9 in
Legroom, f/m/r	39.9/39.0/36.7 in
Shoulder room, f/m/r	59.8/61.9/59.6 in
First row walk-through	8.3 in

Powertrain

Engine	3.4 liters (207 cu in)
Horsepower	185 @ 5200 rpm
Torque (lb-ft)	210 @ 4000 rpm

Exterior Dimensions

Wheelbase	120.0 in
Length	201.4 in
Width	72.2 in
Height	68.1 in
Curb weight	3948 lb

Fuel injection	Sequential port
Transmission	4-speed automatic
Estimated mileage	19 city/26 hwy

¹Requires rear-seat audio and climate controls and power-sliding passenger-side door.

²Requires Driver Information Center. See your dealer for complete details.

*One-year OnStar safety and security contract is standard. Call 1-800-ONSTAR-7 for system limitations and details.

**Always use safety belts and proper child restraints, even with air bags. Children are safer when properly secured in a rear seat. See Owner's Manual for more safety information.

FIRST-CLASS SEATING PLUS PLENTY OF ROOM FOR ALL YOUR CARRY-ONS.



Silhouette Premiere in Mocha Two-Tone leather trim.



The third-row stowable bench seat with the rear cargo convenience center, which is standard on GLS and Premiere, makes it easy to reconfigure Silhouette to handle a variety of cargo and passenger-carrying needs.



BRAVADA

Bravada is one SUV that treats its occupants as well as it handles the road. The traction-finding ability of the standard SmartTrak on-demand all-wheel-drive system is matched by the passenger-pampering interior. With standard features like leather-trimmed seating surfaces and a powerful climate control system, Bravada takes care of you with uncommon vigilance and comfort.

THE SPORT UTILITY THAT ELEVATES
YOUR STANDARD OF DRIVING.



INTUITIVE INTERIOR

Standard equipment includes sumptuous leather-trimmed seating areas, 8-way power front seats, an automatic climate control system and programmable power door locks.



SMARTTRAK

The standard SmartTrak system continually monitors available traction, giving you the most grip for conditions.

B R A V A D A

Bravada is designed to tackle bad weather and bad roads, and it's always ready to help when faced with potholes, wet leaves or the unexpected patch of slippery mud. In addition to SmartTrak, Bravada features dual frontal air bags,* 4-wheel disc brakes with antilock braking and an agile suspension. And if you require even more reassurance and peace of mind, the available OnStar** system can automatically send help to your location.

*Always use safety belts and proper child restraints, even with air bags. Children are safer when properly secured in a rear seat. See Owner's Manual for more safety information.
**One-year OnStar safety and security contract is standard. Call 1-800-ONSTAR-7 for system limitations and details.

BRAVADA STANDARD FEATURE HIGHLIGHTS

Powertrain and Chassis • 4.3-liter Vortec V6 engine • Electronic 4-speed automatic overdrive transmission • SmartTrak on-demand all-wheel drive • Locking rear differential • Fully-boxed ladder frame • Independent front suspension with torsion bars and stabilizer bar/rear semi-floating axle with leaf springs and stabilizer bar • High-pressure gas shock absorbers • Variable-ratio power steering • 15-inch aluminum wheels • P235/70R15 all-season radial tires • 4-wheel disc brakes

Safety and Security • Dual frontal air bags* • 3-point outboard safety belts • Rear outboard adjustable shoulder belt guides • Rear child-seat upper tether anchors • 4-wheel antilock braking system • Brake/transmission shift interlock • Automatic programmable power door locks • Rear-door child-security locks • Vehicle theft-deterrent systems • Automatic daytime running lamps • Battery-rundown protection



Seating and Trim • Contour front bucket seats • 60/40 split-folding rear bench seatback • Leather-trimmed seating areas • 8-way power driver's seat with memory • 8-way power front passenger's seat • Front driver's and passenger's 2-way power lumbar adjustments • Storage: Front console, glove box, overhead console, map pockets in doors and front seatbacks, and front and rear cupholders • Passenger-assist handles • Rear cargo cover and convenience net

Comfort and Convenience • Automatic electronic climate control • Power windows, programmable automatic door locks and outside mirrors • Remote-control keyless entry system • HomeLink Universal Transmitter • Heated power outside foldaway mirrors • Electrochromic inside rearview mirror • Automatic headlamp control • Overhead console with trip computer, reading lamps, compass and outside temperature readout • TILT-Wheel adjustable steering column • Cruise control • Floor-mounted shifter • AM/FM stereo with CD and cassette players • 6-speaker Dimensional Sound system

Exterior • Halogen headlamps • Foglamps • Solar-treated windshield and privacy glass in rear doors, rear quarters and tailgate • One-piece rear liftgate with separate liftglass • Front recovery hooks and rear bumper step plates • Rooftop luggage rack • Accent stripes (except Platinum Edition Package)

AVAILABLE FEATURE HIGHLIGHTS

• OnStar** • Heated front seats • Electrochromic heated driver's outside mirror • Cargo management system • Bose® Premium Sound System • Steering wheel audio touch controls • 6-disc console-mounted CD changer • Electric glass-panel sunroof • White-letter outlined tires • Gold Package • Platinum Edition Package • Towing Package

Interior Dimensions/Capacity

Headroom, front/rear	39.6/38.1 in
Legroom, front/rear	42.4/36.3 in
Shoulder room, front/rear	57.2/57.2 in
Hiproom, front/rear	53.6/51.3 in
Cargo capacity, seats down	67.8 cu ft

Powertrain

Engine	4.3 liter (262cu in)
Horsepower	190 @ 4400 rpm
Torque (lb-ft)	250 @ 2800 rpm

Exterior Dimensions

Wheelbase	107.0 in
Length	181.2 in
Width	67.8 in
Height	64.4 in
Curb weight	4068 lb

Fuel injection	Sequential port
Transmission	4-speed automatic
Estimated mileage	15 city/20 hwy

A WORD ABOUT THIS CATALOG

We have tried to make this catalog comprehensive and factual. We reserve the right, however, to make changes at any time, without notice, in prices, colors, materials, equipment specifications, models and availability. Since information may have been updated since the time of printing, please check with your Oldsmobile dealer for complete details. Oldsmobile reserves the right to lengthen or shorten the model year for any product for any reason, or to start and end model years at different times.

©2000 GM Corp. All rights reserved. Printed in the U.S.A. 8/00. Alero, Bravada, Intrigue, Silhouette, Silhouette Premiere, Delco, PASSLock, Oldsmobile, the Oldsmobile emblem, the Oldsmobile nameplate, and SmartTrak are registered trademarks of General Motors Corp. Vortec is a trademark of General Motors Corp. Magnasteer and TILT-Wheel are trademarks of Delphi Automotive Systems. OnStar and the OnStar button are registered service marks of OnStar Corp. "Aurora" is used with permission of Hankook Tire. HomeLink is a registered trademark of Prince, a Johnson Controls Company. Printed on recyclable paper. ♻

*Always use safety belts and proper child restraints, even with air bags. Children are safer when properly secured in a rear seat. See Owner's Manual for more safety information.

**One-year OnStar safety and security contract is standard. Call 1-800-ONSTAR-7 for system limitations and details. See your dealer for complete details.

www.oldsmobile.com 1-800-255-OLDS  Oldsmobile