



Vehicle shown with optional equipment.



A Word About This Catalog

We have tried to make this catalog comprehensive and factual. We reserve the right, however, to make changes at any time, without notice, to the information contained in this catalog. Since information may have been updated since the time of printing, please check with your Oldsmobile dealer for complete details. Oldsmobile reserves the right to lengthen or shorten the model year for any product for any reason, or to start and end model years at different times. Some photos in this catalog show vehicles with optional equipment.

The GM Card®
For information or to apply for the GM Mastercard®, call 1-800-8GM-CARD.

SmartLease By GMAC
For information about SmartLease, SmartBuy or any of the other quality GMAC financing options, see your Oldsmobile dealer, call 1-800-32-SMART, or visit our Web site at www.gmacfs.com.

Accelerate Your College Savings
Uprromise is a revolutionary college savings accelerator that can help you save thousands of dollars for college. Through Uprromise, America's most trusted companies contribute a portion of your everyday spending into a college savings account for your children, grandchildren or any other child you wish to support. For complete details on the GM-Uprromise program, go to <http://upromise.gm.com>. Enrollment is simple and absolutely free.

The GM Mobility Program
Oldsmobile recognizes the importance of mobility to everyone's life and, therefore, offers financial assistance to persons with disabilities through the General Motors Mobility Program. This program can provide up to \$1,000 reimbursement toward the cost of eligible aftermarket adaptive equipment for drivers and passengers. For details and free resource information, call 1-800-323-9935 (TTY users: 1-800-833-9935).

A Note On Child Safety
Always use safety belts and proper child restraints, even with air bags. Children are safer when properly secured in a rear seat. Never place a rear-facing infant restraint in the front seat of any vehicle equipped with an active air bag. See your vehicle Owner's Manual and child safety seat instructions for more safety information.

A Note On Trailering
Maximum trailer weight is calculated assuming the driver and one passenger are in the tow vehicle and it has all required trailering equipment. The weight of additional optional equipment, passengers and cargo in the tow vehicle must be subtracted from the maximum trailer weight. Some models, when loaded with driver, passengers and maximum tongue load, may exceed the maximum GVW rating for that vehicle. Optional equipment and an appropriate owner-installed hitch may be required to achieve ratings. See your dealer for details.

New Vehicle Limited Warranty
This warranty is for GM vehicles registered in the USA. See your Oldsmobile dealer for terms and conditions.

Covered for 3 years/36,000 miles (whichever comes first):
• The complete vehicle • Tires • Towing to your nearest Oldsmobile dealership • Cosmetic corrosion resulting from defects • Repairs made to correct any vehicle defect • No charge for most warranty repairs
Covered for 6 years/100,000 miles (whichever comes first):
• Rust-through corrosion

Corrosion Protection
Oldsmobile vehicles are designed and built to resist corrosion. All body and sheet metal components are warranted against rust-through corrosion for six years or 100,000 miles, whichever comes first. Application of additional rust-inhibiting materials is not required under the corrosion coverage and none is recommended. See your Oldsmobile dealer for terms of this limited warranty.

An Important Note About Alterations and Warranties

Installations or alterations to the original equipment vehicle (or chassis) as distributed by General Motors are not covered by the General Motors New Vehicle Limited Warranty. The special body company, assembler, equipment installer or upfitter is solely responsible for warranties on the body or equipment and any alterations (or any effect of the alterations) to any of the parts, components, systems or assemblies installed by GM. General Motors is not responsible for the safety or quality of design features, materials or workmanship of any alterations by such suppliers.

Assembly
Oldsmobiles and their components are assembled or produced by different operating units of General Motors, its subsidiaries or suppliers to GM Worldwide. We sometimes find it necessary to produce Oldsmobiles with different or differently sourced components than originally scheduled. Since some options may be unavailable when your vehicle is assembled, we suggest that you verify that your vehicle includes the equipment you ordered or, if there are changes, that they are acceptable to you.

Engines
Oldsmobiles are equipped with engines produced by different operating units of GM, its subsidiaries or suppliers to GM Worldwide.

Bumper-To-Bumper Limited Warranty
For three years or 36,000 miles (whichever comes first), the GM Bumper-to-Bumper Limited Warranty covers your new Bravada for repairs, including parts and labor, to correct any defect in materials or workmanship, including tires. With this limited warranty, there's no deductible. The complete vehicle is covered during the warranty period, except adjustment and normal maintenance items. All body sheet metal components are warranted against rust-through corrosion for six years or 100,000 miles, whichever comes first. There is also no deductible for rust-through repairs. Application of additional rust-inhibiting materials is not required or recommended. See your Oldsmobile dealer for the terms of this limited warranty.

Owner Aftercare
Throughout our 3-year/36,000 mile (whichever comes first) Bumper-to-Bumper Limited Warranty, we also offer Courtesy Transportation, free trip routing and 24-hour Roadside Assistance by calling 1-800-442-OLDS. At Oldsmobile, we're committed to your satisfaction long after the purchase of your vehicle. See your Oldsmobile dealer for complete terms and conditions of these programs.

Owner Center at My GMLink
The Owner Center at My GMLink is a complimentary service for GM owners within MyGMLink.com, a one-stop resource to enhance your GM ownership experience. Exclusive member benefits include online service reminders, vehicle maintenance tips, online owner's manual, special privileges and more. Sign up today at www.mygmlink.com.

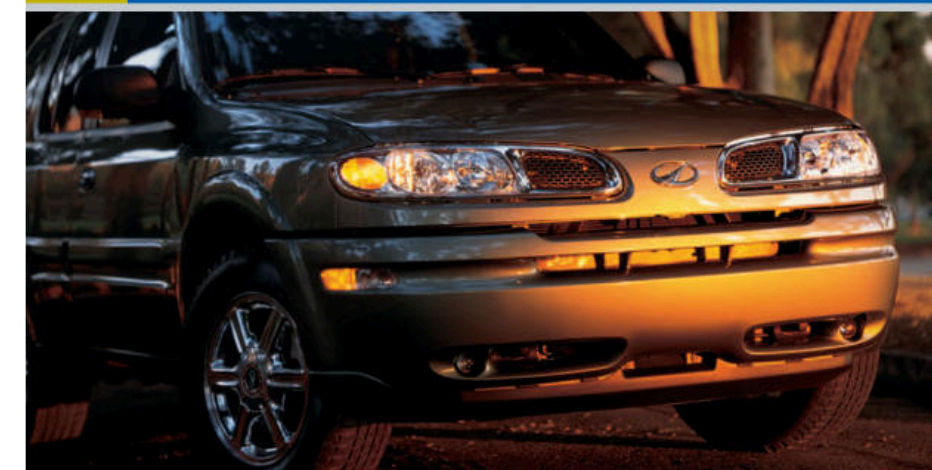
GM Protection Plan
Every new 2004 Oldsmobile comes with the confidence of a 5 year/60,000 mile GM Protection Plan, or you can choose additional cash in lieu of the GMPP. Take delivery by 10/01/04. GM Protection Plan Major Guard® coverage for 5 years/60,000 miles (whichever comes first) effective from the date of delivery and 0 miles. Excludes normal maintenance. Some restrictions apply. See dealer for complete details of Major Guard and cash alternative. In Florida, coverage is provided under Oldsmobile 60-month/60,000 mile limited warranty. See Florida dealer for complete limited warranty details.

Need More Information?
Visit our Web site at www.bravada.com. For information on any other Oldsmobile product, visit us at www.oldsmobile.com or call 1-800-255-6537.

©2003 GM Corp. All Rights Reserved. Printed in the USA 07/03. Bravada, GMAC, GM Protection Plan, GM Protection Plan Major Guard, Major Guard, The GM Card, Oldsmobile, the Oldsmobile emblem, the Oldsmobile nameplate, PASSlock, SmartTrak and SmartLease are registered trademarks of General Motors Corp. Vortec is a trademark of General Motors Corp. Delphi is a registered trademark of Delphi Automotive Systems. Tilt-Wheel is a trademark of Delphi Automotive Systems. OnStar and the OnStar button are trademarks of OnStar Corp. TravelNote and HomeLink are registered trademarks of Price Corp.



SPECIFICATIONS



Bravada's potent mix of raw horsepower,

traction control and road-smoothing

suspension lets you take firm control of

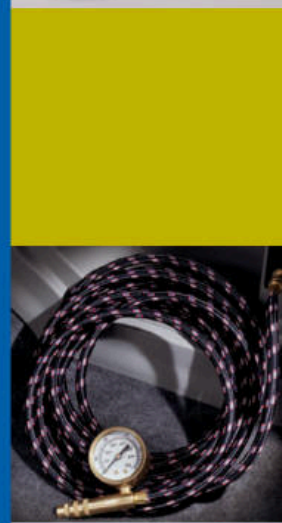
any road surface. And its standard features

include advancements and luxuries that

make you feel they were tailored to your

personal specifications.

INSIDE "BRAVADA"



STANDARD FEATURES

POWERTRAIN/CHASSIS AND SUSPENSION

- Vortec 4200 DOHC inline 6-cylinder engine with variable exhaust valve timing
- Two-wheel drive
- Traction control with locking rear differential
- Electronic 4-speed automatic transmission with console shifter
- Fully-boxed ladder frame chassis
- Independent front suspension with upper and lower control arms, coil springs, shock absorbers and stabilizer bar
- 5-link coil suspension (AWD)
- 5-link Electronically Controlled Rear Air Suspension (ECAS) with automatic load leveling (2WD)
- Power rack-and-pinion steering
- Weight-distributing platform hitch
- 7-wire electrical harness
- Heavy-duty hazard warning flashers

SAFETY AND SECURITY

- OnStar**
- Dual frontal air bags*
- 3-point safety belts for all seating positions
- 4-wheel, internally ventilated disc brakes
- Antilock braking system
- Brake/transmission shift interlock
- Remote-control keyless entry system
- Vehicle theft-deterrent system
- PASSLock vehicle security system
- Automatic programmable power door locks
- Rear door child-security locks
- LATCH system for child restraints
- Automatic headlamps
- Heated power outside rearview mirrors
- Daytime running lamps
- Foglamps
- Cornering lamps
- Illuminated entry system
- Front pulse wipers
- Rear wiper/washer
- Rear-window defogger
- Battery-rundown protection

DRIVER CONTROLS

- Driver Information Center
- Steering wheel-mounted controls for audio, temperature and Driver Information Center
- TILT-Wheel adjustable steering column
- Cruise control
- Backlit switches
- Remote release for hood
- Reminder chimes

SEATING AND TRIM

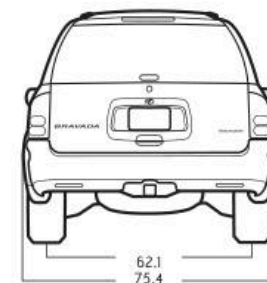
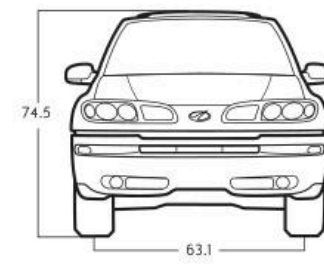
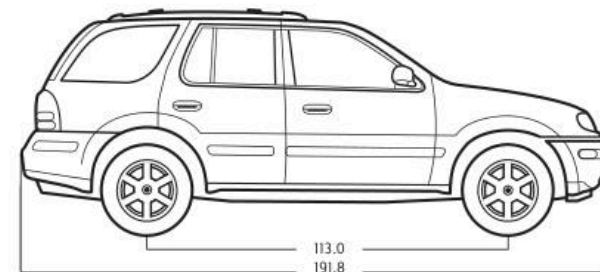
- Leather-seating surfaces
- Contoured front bucket seats
- 8-way power driver and front-passenger seats
- 60/40 split-bench folding rear seat with foldaway head restraints
- Driver and front-passenger power lumbar adjustment
- Leather-wrapped steering wheel
- Storage: Front console, glove box, overhead console, map pockets in doors, front and rear cupholders (4) and rear cargo under-floor storage
- Passenger-assist grips (4)
- Sun visors with illuminated vanity mirrors
- Carpeted front and rear floor mats

COMFORT AND CONVENIENCE

- Dual-zone automatic climate control system with rear-seat fan controls
- Power windows with driver and front-passenger express-down feature
- Universal garage door opener
- Foldaway outside rearview mirrors
- Electrochromic inside rearview mirror with compass
- Air inflator
- Auxiliary power outlets (4)
- Coat hooks (2)
- Retained accessory power
- AM/FM stereo with CD/cassette players and Radio Data System (RDS)
- Rear-seat audio system

EXTERIOR

- Halogen headlamps
- Solar-treated windshield and privacy glass in rear doors, rear quarters and tailgate
- One-piece rear liftgate with separate liftglass
- Body-colored side moldings and bumpers
- Rooftop luggage carrier
- Underbody spare tire mount (full-size)
- 17-inch aluminum wheels
- P245/65R17 Michelin M+S Cross Terrain all-season radial tires



AVAILABLE FEATURES/PACKAGES

POWERTRAIN/MECHANICAL

- SmartTrak all-wheel-drive system with locking rear differential
- 5-link ECAS load leveling and P255/60R17 Michelin Tires (AWD)
- 4.10 enhanced towing axle
- Engine block heater (AWD only)

COMFORT AND CONVENIENCE

- Heated front seats with separate controls for back cushion
- Memory package:
 - Driver's seat memory system
 - Outside rearview mirrors with turn indicators, memory and reverse tilt-down
- DVD Entertainment System (not available with sunroof)
- Bose Premium Music System
- In-dash 6-disc CD player
- Electric glass-panel sunroof (not available with DVD Entertainment System)
- Cargo net, mat and shade
- TravelNote
- HomeLink® Lighting Package (call 1-800-355-3515 to order)
- Rain-sensing wiper system

EXTERIOR

- Polished aluminum wheels
- Gold graphics finish on hood emblem and rear panel script

SPECIFICATIONS & DIMENSIONS

POWERTRAIN

Engine displacement	4.2 liters
Horsepower (hp)	275 @ 6000 rpm
Torque (lb.-ft.)	275 @ 3600 rpm
Fuel injection	Sequential port
Transmission	4-speed automatic
Final drive ratio	3.73/4.10 (optional)

INTERIOR DIMENSIONS

Headroom front/rear (in.)	40.2/39.6
Legroom front/rear (in.)	43.1/37.1
Shoulder room front/rear (in.)	58.5/58.5
Hiproom front/rear (in.)	55.5/58.1

CAPACITIES

Passengers	5
Cargo capacity, seats down/up (cu. ft)	80.1/39.8 ^{††}
Fuel Tank (approx. gal.)	19
Towing (lb.)	5700 (2WD)/5600 (AWD) [†]
Towing with 4.10 rear axle (lb.)	6200 (2WD)/6100 (AWD) ^{††}
Rooftop luggage carrier (lb.)	200.0

EXTERIOR DIMENSIONS

Wheelbase (in.)	113.0
Length (in.)	191.8
Width (in.)	75.4
Height (in.)	74.5
Curb weight (lb.)	4442 (2WD)/4628 (AWD)
Step-in height, door opening (in.)	18.2
Tread width, front/rear (in.)	63.1/62.1
Turning circle (ft.)	36.4
Ground clearance (in.)	8.0

* Always use safety belts and proper child restraints, even with air bags. Children are safer when properly secured in a rear seat. Never place a rear-facing infant restraint in the front seat of any vehicle equipped with an active air bag. See Owner's Manual for more safety information.
 **1-year OnStar Safe & Sound Service agreement is standard. Premium service plan is available at additional cost. Call 1-800-ONSTAR-7 or visit www.onstar.com for system limitations and details. OnStar uses existing emergency service providers, as well as cellular telephone and satellite technologies. Vehicle electrical system must be operating for OnStar to work.
 † FCC ruling 02-229 eliminates the requirement that wireless carriers support the analog network after Feb. 16, 2008. As a result of this ruling, if carriers for OnStar elect to provide only digital service commencing on 2/16/08, the OnStar system in this vehicle may not operate.
 †† Maximum trailering weight ratings are calculated assuming a base vehicle, except for any options necessary to achieve the rating plus driver. The weight of other optional equipment, passengers and cargo will reduce the maximum weight your vehicle can tow. See your dealer for details.
 ††† Cargo and load capacity limited by weight and distribution.

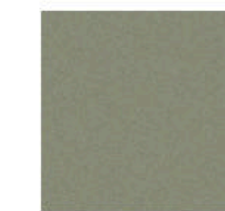
EXTERIOR COLORS/INTERIOR COLOR AVAILABILITY



BLACK ONYX



JEWELCOAT RED



SILVER GREEN



ARCTIC WHITE

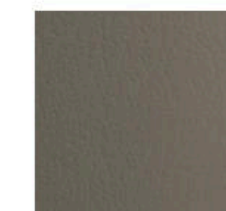


POLO GREEN



LIQUID SILVER

INTERIOR COLORS



PEWTER



CASHMERE WITH DARK PEWTER ACCENTS

BRAVADA



INSIDE "BRAVADA"