

1995 Circa



by Oldsmobile

— ABOVE ALL,
YOUR NEXT NEW CAR
SHOULD GIVE YOU
PEACE OF MIND.

You want a car that you can count on: a car that serves your confidence and trust year after year. That's why we invite you to consider Circo Sedan or Carlaw Cruiser Wagon by Oldsmobile. Each is an automobile of proven quality, reliability and durability. Both are equipped with a driver-side air bag and anti-lock brakes as standard safety features. Of course, they also provide the comfort and room you'd expect from an Oldsmobile. Circo offers you a spacious sedan with seating for six adults. While the versatile Carlaw Cruiser seats up to eight passengers or carries loads of cargo. For 1993, Oldsmobile offers you a better way to buy a new car. You won't have to go through the hassle of comparing a lot of different models and option packages, because Circo gives you the simple choice of two well-equipped versions. Series I is nicely equipped to provide a comfortable yet practical sedan, while Series II gives you additional conveniences. The Carlaw Cruiser is available in just one version with its own long list of standard features. Simply put, Circo and Carlaw Cruiser give you more car, and peace of mind, for your money.

*Circo gives you the COMFORT, DURABILITY and VALUE you need
for years of SATISFYING ownership.*



The Safety Factor

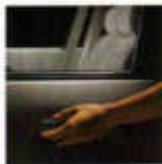
YOU SHOULD FEEL PEACE OF MIND EVERY TIME YOU GET BEHIND THE WHEEL. THAT'S WHY Ciera AND Ciera CRUISER ARE ENGINEERED TO HELP YOU **PREVENT** AN ACCIDENT. FOUR WHEEL ANTI-LOCK BRAKES AND POWER RACK AND PINION STEERING HELP YOU MAINTAIN CONTROL. WHILE FRONT WHEEL DRIVE AND MACPHERSON STRUT FRONT SUSPENSION PROVIDE SUREFOOTED STABILITY. OF COURSE, IF A COLLISION OCCURS, Ciera AND Ciera CRUISER ARE ALSO ENGINEERED TO HELP **PROTECT** YOU. A DRIVER-SIDE AIR BAG IS STANDARD. A UNIBODY STRUCTURE WITH FRONT AND REAR CRUSH ZONES HELPS ABSORB AND GUIDE CRASH ENERGY AWAY FROM



THE PASSENGER CABIN. THE INTERIOR IS DESIGNED WITH FLAME-RETARDANT FABRICS AND IMPACT-ABSORBING SURFACES. SINCE SECURITY IS ALSO PART OF SAFETY, Ciera AND Ciera CRUISER ARE EQUIPPED WITH AUTOMATIC PROGRAMMABLE POWER DOOR LOCKS AND AN ILLUMINATED ENTRY FEATURE THAT LIGHTS UP THE INTERIOR WHEN YOU LIFT THE DOOR HANDLE.

*Ciera is designed to help you **PREVENT** an accident, and to help **PROTECT** you when a collision is unavoidable.*

Early Ciera and Ciera Cruiser model is equipped with a standard driver-side air bag. Remember you should always wear your safety belt, even with an air bag.



For added security, the illuminated entry feature automatically lights up the interior when you lift the door handle.

A standard anti-lock braking system (ABS) helps the driver maintain steering control by minimizing the chance of wheel lockup and skidding during hard braking.





Clean Series II in Medium Ring cloth.

Comfort and Convenience

THE ROOMY INTERIORS OF CHERA AND CUTLASS CRUISER ARE DESIGNED TO PROVIDE LASTING COMFORT. THE DIVIDED BENCH FRONT SEAT FEATURES POWER RECLINERS FOR THE DRIVER AND PASSENGER. A FRONT CENTER ARMREST FOLDS BACK FOR THREE-ACROSS SEATING WHEN THE NEED ARISES. WIDE-OPENING DOORS PROVIDE EASY IN-AND-OUT ACCESSIBILITY. AND EVERY CHERA AND CUTLASS CRUISER PROVIDES STANDARD FEATURES LIKE TILT-WHEEL STEERING, AIR CONDITIONING, AM/FM STEREO WITH CASSETTE, AUTOMATIC PROGRAMMABLE POWER DOOR LOCKS, PULSE WYERS AND A REAR WINDOW DEFROSTER.

*Clean gives you the COMFORT, SPACE and FEATURES you need
so ENJOY driving for years to come.*



It's so easy to problem reading that big, well-lit analog gauges, even at night. It's so fun to see how easy there's a three-spoke air bag.



It gives instant access from you extra storage space and dual cupholders.

— YOU SHOULD FEEL AS
GOOD ABOUT BUYING
YOUR NEW CAR AS
YOU DO DRIVING IT.

Buying a new car SHOULD be fun. But we know that wading through options and haggling over prices can make it a frustrating experience. So not long ago, we began to explore a new, simpler way to buy an Oldsmobile. — First, we simplified the selection process by making our most popular options standard equipment on most models. To simplify our pricing, we removed the confusing discounts and rebates. But we left in the savings. — The response was so encouraging, we've gone a step further for 1995. This year, every Oldsmobile model is available in just one or two versions that are well-equipped, there is only a handful of options to consider. And we've simplified pricing across the board, enabling your Oldsmobile dealer to skip the haggling and quote you the best possible price right up front. — Simply put, our new way of doing business means Oldsmobile now offers you even more car for your money—and a more enjoyable way to buy it. And that's certainly something you can feel good about.

— Oldsmobile introduces a simpler, BETTER way for you to buy a car.

After all, it's your MONEY.



Car is Drifwood Model.

— We invite you to CONFIDE. Drive with other sedans in its class.

We don't think you'll find a better VALUE anywhere.

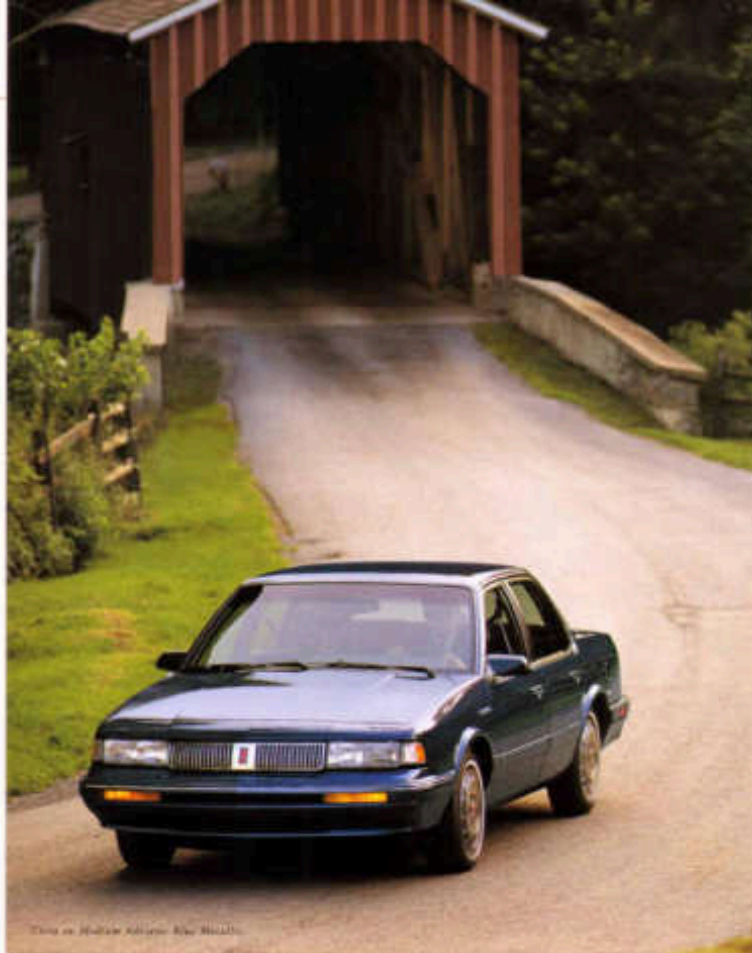


Oldsmobile introduces a simpler, BETTER way for you to buy a car.

After all, it's your MONEY.

We invite you to COMPARE Cutlass with other sedans in its class.

We don't think you'll find a better VALUE anywhere.



Oldsmobile Cutler Cruiser. New Models.

Oldsmobile introduces a simpler, BETTER way for you to buy a car.

After all, it's your MONEY.

When you seat a Cutler in Cutler Cruiser, you'll enjoy the clear mood of a standard Deluxe AM/FM stereo radio with automatic tuning, seven preset stations and

five recorded-song speakers.



FES Wheel steering lets you adjust the angle to your most comfortable driving position.

So you can tilt the wheel all the way up to make it easier for you to get in and out of the driver's seat.



The Cutler Series II and Cutler Cruiser feature a 3100 V6 engine that delivers a responsive 188 hp and 187 lb-ft of torque. This engine is also available on Cutler Series I.

The Incomparable Value of Cutler

WITH CUTLER, YOU'LL KNOW YOU'RE GETTING A RELIABLE, WELL-EQUIPPED SEDAN AT AN AFFORDABLE PRICE. CUTLER SERIES I GIVES YOU STANDARD FEATURES (LIKE A 3.3-LITER ENGINE, AUTOMATIC TRANSMISSION, DRIVE-SIDE AIR BAG, ANTI-LOCK BRAKES, AIR CONDITIONING, DIVIDED REAR FRONT SEAT WITH POWER RECLINING, FRONT SEAT STORAGE BASKET WITH SUNGLASSES, AUTOMATIC PROGRAMMABLE POWER DOOR LOCKS, ANTI-TRIP STEERING WHEEL CASSETTE, TILT-WHEEL STEERING, FUSE WINDSHIELD WIPERS, SIDE AND REAR WINDOW DEFOGGEYS, ILLUMINATED ENTRY AND CARPETED FLOOR MATS). THE CUTLER SERIES II ADDS THE POWER OF A 3100 V6 ENGINE, A 3-PEED AUTOMATIC TRANSMISSION, POWER WINDOWS WITH DRIVER'S AUTO-DOWN FEATURE, CRUISE CONTROL AND SUNL POWER OUTSIDE MIRRORS.

We invite you to COMPARE Cutler with other sedans in its class.

We don't think you'll find a better VALUE anywhere.



Copyright © 1989 Oldsmobile

The Incomparable Value of Cutlass Cruiser

WITH SEATING FOR EIGHT OR ROOM FOR 78 CUBIC FEET OF CARGO, CUTLASS CRUISER IS DEFINITELY A VERSATILE WAGON. AT THE SAME TIME, IT'S A VEHICLE LOADED WITH COMFORT AND SECURITY. STANDARD EQUIPMENT INCLUDES A 2100 V6 ENGINE, 4-SPEED AUTOMATIC TRANSMISSION, DRIVER SIDE AIR BAG, SHY-LOCK BRAKES, AIR CONDITIONING, DIVIDED BENCH FRONT SEAT WITH POWER RECLINERS, TRUNK STORAGE ARMREST WITH BOWL COMPARTMENT, AM/FM STEREO WITH CASSETTE, DUAL POWER OUTSIDE MIRRORS, CRUISE CONTROL, POWER WINDOWS, FOLDING REAR SEAT, THIRD SEAT, ROOFTOP CARRIER AND A REAR WINDOW AIR DEFLECTOR.

Cutlass Cruiser isn't just A LOT OF CAR for the money.

It's a lot of a new PERIOD.



Cutlass Cruiser's versatile cargo box can load cargo by flipping up the rear window or lifting the whole cargo. The standard interior third row provides seating for two additional passengers.

WE WANT YOU TO BE SATISFIED WITH YOUR NEW OLDSMOBILE LONG AFTER THE SALE.

In addition to a comprehensive warranty, we also offer courtesy transportation, provide 24-hour roadside assistance and even guarantee your satisfaction. Which may not sound so important right now, but you'll appreciate them should the need ever arise. Just ask one of our owners.

Charles Breen, of Lincoln, Nebraska, discovered the value of 24-hour Roadside Assistance after locking his

key in his car. He called 1-800-487-OLDSM and had a new set of keys in 37 minutes, at no charge.



Charles wrote us, "I want to thank and congratulate your Oldsmobile emergency lockout service. This was my first experience with your car owner care program and it reaffirmed my confidence with Oldsmobile." (Edited for length and clarity only.

Complete letter on file.)

As an Oldsmobile owner, you'll get the Oldsmobile Edge:

Bumper-to-Bumper Warranty

Every part of your Oldsmobile is covered under our warranty, except tires (they have their own warranty) for three years or 36,000 miles, whichever comes first. And you won't have to pay a deductible.

24-Hour Roadside Assistance

We'll be there to help you 24 hours a day, 365 days a year, during the warranty period. All you need to do is call, we'll call first number. There are over 15,000 emergency facilities ready to help you.

Courtesy Transportation

When you drop off your Oldsmobile for some-day warranty service, we'll give you a free one-way courtesy car in 30 mins. For overnight service, we'll give you a loaner or substitute you up to \$30 a day for transportation.

Guaranteed Satisfaction

If you're not satisfied with your new Oldsmobile, you can bring it back within 30 days at 1,500 miles, whichever comes first, and receive full credit toward the purchase or lease/finance of another new Oldsmobile.

THE GM CAR!

Every time you see the iconic GM logo, you'll see the GM Maxtor™ GM will credit 5% of your purchase toward buying or leasing a new Oldsmobile. It could mean saving thousands, even thousands, of dollars. Call 1-800-8GM-CAR2 for more information, including annual limit and restrictions.

ACCELERATED EARNINGS NETWORK

This participating GM retailer, for up to 10% in GM Card savings on eligible parts and service transactions. Call 1-800-9V-1000 for more information.

SMARTLEASE

Smartlease lets qualified customers pay for the portion of the vehicle they use, rather than paying for the entire vehicle as you would with traditional financing. You'll also enjoy lower up-front costs and lower monthly payments. Plus, you'll be able to drive a new vehicle more often in drive a higher-priced model. See your Oldsmobile retailer for more information.

FOR OCCUPANT PROTECTION:

- Driver-side supplemental inflatable restraint
- Automatic lap/shoulder safety belts, driver and right-front passenger
- Manual lap/shoulder safety belts, outboard rear seat passenger
- Manual lap safety belts, outboard rear seat and seats behind seat
- Energy-absorbing instrument panel
- Laminated windshield glass, overhead head
- Shatterproof side glass, side and rear windows
- Retracting door latches
- Side door beams
- Passenger-guard inside door lock handle
- Safety anchors
- Head restraints, front outboard, driver and right-front passenger
- Head air curtain
- Head-curtain (side) curtain, driver and passenger side
- Side-impact door beams and door structure compression
- Automatic door locking system
- Power and rear view mirror
- Power lock outboard-rear
- Power-reclining seat

FOR CRASH AVOIDANCE:

- Side marker lamps and reflectors
- Parking lamps
- Fog (front) warning function
- Anti-up lamps
- Center high-mounted stoplamp
- Directional signal control
- Windshield defroster, wiper and wiper/wash system
- Dual depthlight wiper system
- Dual wiper motor
- Brake system with dual master cylinder plus parking lights
- Anti-lock Brakes
- Summer safety recall
- Dual master head lamp (front opening)
- Low-grip (front) dual windshield wipers, wiper arm and blades
- Safety seat belt rules
- Tire with built-in tread wear indicators
- Illuminated brake and exhaust controls
- Brake/master cylinder
- Hydraulic dual brake lines
- Brake master cylinder
- Electric rear window defogger
- Door warning light/indicator

FOR THEFT DETERRENCE:

- Theft-deterrent steering column lock
- Remote trunk lock system
- Vehicle color identification number
- Laser-etched VIN plate
- Marked body panel (hidden applicator)
- High-theft-area key locking system

IMPORTANT WORDS ABOUT THIS CATALOG:

We have tried to make this catalog as comprehensive and factual as possible. We reserve the right, however, to make changes at any time, without notice, in prices, colors, materials, equipment, specifications, models and availability. Since some refinishing may have been applied since the time of printing, please check with your Oldsmobile retailer for complete details.

• A WORD ABOUT ENGINES:

Oldsmobiles are equipped with engines produced by different operating units of General Motors, in accordance or in addition to GM worldwide.

• A WORD ABOUT ASSEMBLY:

Oldsmobiles are assembled by different operating units of General Motors, in accordance or in addition to GM worldwide. Oldsmobile incorporates thousands of components produced by different operating units of GM, in accordance or in addition to GM worldwide. An owner's book is necessary to produce Oldsmobiles with different or differently sourced components than originally listed. All such components have been approved for use in Oldsmobiles and will provide the quality performance associated with the Oldsmobile name. Since some options may be unavailable when your vehicle is assembled, we suggest that you verify that your vehicle includes the equipment you ordered at, if there are changes, that they are acceptable to you.

• A WORD ABOUT UPDATED SERVICE INFORMATION:

Oldsmobile regularly sends its retailers useful service bulletins about Oldsmobile products. Oldsmobile retailers produce performance in the field. We store proper bulletins for updating your product books. How you can get these bulletins, see our just mailed. If you want more information, call toll free 1-888-331-4122.

• A WORD ABOUT CORROSION PROTECTION:

Oldsmobiles are designed and built to resist corrosion. All body sheet metal components are corrosion resistant, even through frame corrosion for six years or 100,000 miles, whichever comes first. There is no substitute for rust-through repair. Application of additional rust-inhibiting materials is not required or recommended under the corrosion warranty.

• A WORD ABOUT WARRANTY:

The GM 3-year/36,000-mile Bumper-to-Bumper Warranty covers repairs for any new Oldsmobile, including any lease and finance, in normal use during its warranty or performance warranty during the warranty period. The complete vehicle lease plan, which is covered by your manufacturer, will be covered for three years or 36,000 miles, whichever comes first, with no deductible charge. See your Oldsmobile retailer for terms of these limited warranties.

© 2004 GM Corp. All rights reserved. Based on 2004 Oldsmobile. Oldsmobile, Buick, Cadillac, Chevy, Corolla, Chevrolet, Buick, Oldsmobile, Pontiac and the Oldsmobile logo are registered trademarks of General Motors. Oldsmobile is a trademark of General Motors Corp. Restricted Warranty Element, the Oldsmobile logo and the Oldsmobile logo are service marks of General Motors Corp.

The 1995 Oldsmobiles

The 1995 Oldsmobile lineup offers you a wide choice of models for every driving need. There's something in it for everyone.



Aurora



Cutlass Supreme Convertible



Cutlass Coupe



Eight Eight



Intrigue



200



Corsica



Eight Eight



Cutlass Supreme Coupe



Cutlass Cruiser



Cutlass Supreme Sedan



Silhouette

