

The 1996
EIGHTY EIGHT





Traditional comfort and advanced technology.

EIGHTY EIGHT — Standard features include the 3800 Series II V6 engine, 4-speed electronic-shift automatic transmission, dual air bags, anti-lock brakes, daytime running lamps, Twilight Sentinel automatic headlamp control, air conditioning, power windows, power door locks, TILT-Wheel adjustable steering column, cruise control, PASS-Key vehicle security system, and an AM/FM stereo with extended-range sound system and power antenna.



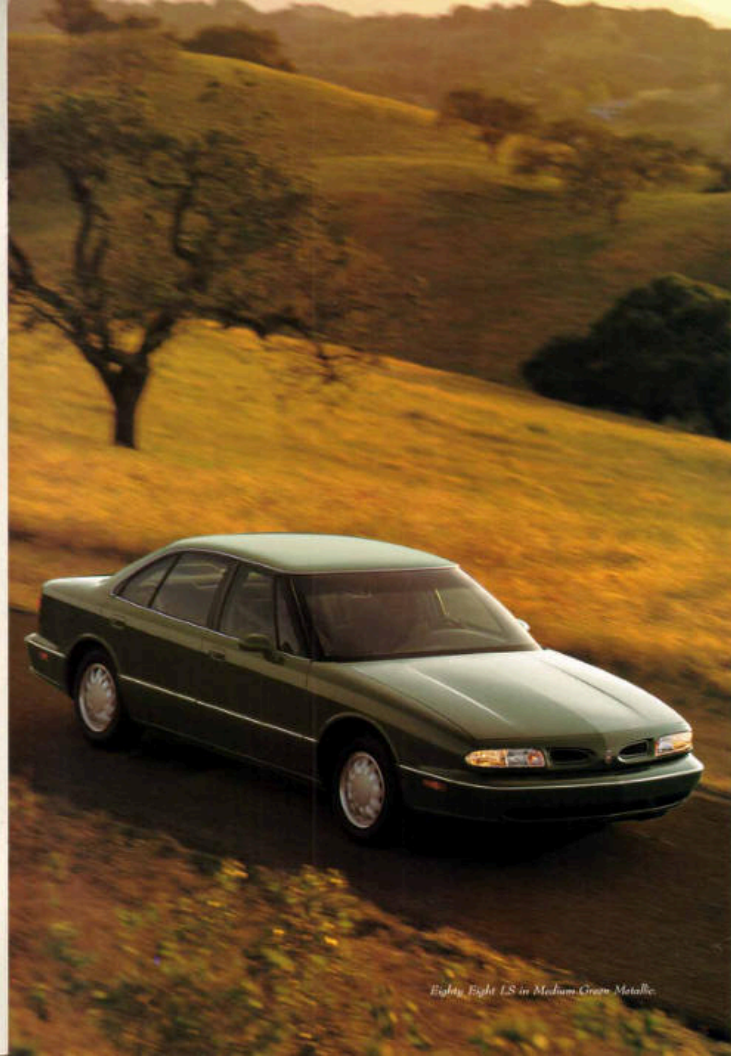
The ultimate Eighty Eight.

EIGHTY EIGHT LS — Additional standard features include an 8-way power driver's seat, remote-control keyless entry system, automatic programmable power door locks, power outside mirrors, rear-seat ventilation outlets, 13-inch aluminum wheels, and an AM/FM stereo with cassette player and 6-speaker Dimensional Sound system.



Guidestar Navigation Information System.

Available on both Eighty Eight models, Oldsmobile's exclusive Guidestar navigation information system puts immediate, easy-to-understand travel information at your fingertips. Using Global Positioning System satellites now circling in space, Guidestar actually tracks your vehicle and knows where you are at every moment. The system provides turn-by-turn routing instructions to local points of interest such as hotels and airports, or the most direct route to your destination. Availability is limited. Ask your local retailer for more information about this exciting new Oldsmobile feature.



STRATEGIC FORWARD
MOVING

OLDSMOBILE IS REDEFINING IT

EXCITE TO GET THERE

EIGHTY EIGHT IS BECAUSING

THE MOST POPULAR

FEATURED INFO TAG

WHEELS. THERE'S NO BETTER

CO-DRIVE. UNDISCOVERED

LOOK UP. BATTLES. AND TO

WANT IT. BUCKLE UP!

OLDSMOBILE. YOU CAN

DISCOVER THE

PROGRESS. ENJOY THE

JOURNEY. YOUR DESTINATION

AND MORE. WITH BOLDNESS

EXPERIENCE. UNDISCOVERABLE.

Eighty Eight LS in Medium Green Metallic



Eighty Eight in Bright White

Full-size comfort with fresh new styling.



Available on Eighty Eight LS, an AM/FM stereo with both CD and cassette players creates superb sound quality.

Start with a high level of traditional comfort and luxury, add new exterior styling, and you get a contemporary automobile that's as good to look at as

it is to drive. That's the Oldsmobile Eighty Eight. The cabin is spacious and comfortable, and it's loaded with comfort and convenience features. Its power is both responsive and effortless. And the smooth, quiet ride will make your time on the road more enjoyable.



The 8-way power driver's seat uses a "metaphoric" switch for easy adjustment. Available on Eighty Eight, standard on Eighty Eight LS.

The Co-speaker Dimensional Sound system provides faithful music reproduction and sound imaging. Available on Eighty Eight, standard on Eighty Eight LS.



STRAIGHTFORWARD BUYING

OLDSMOBILE IS MAKING IT EASIER TO BUY YOUR EIGHTY EIGHT BY PACKAGING THE MOST POPULAR FEATURES INTO TWO MODELS. THERE'S NO NEED TO WADE THROUGH ENDLESS LISTS OF OPTIONS. AND TO MAKE IT EASIER STILL, OLDSMOBILE SALES CONSULTANTS ARE SPECIALLY TRAINED TO ANSWER YOUR QUESTIONS AND MAKE YOUR BUYING EXPERIENCE ENJOYABLE.

Spacious, comfortable and luxurious,
Eighty Eight's interior treats you with respect.



ECOLOGICALLY SOUND
GENERAL MOTORS IS
COMMITTED TO THE NATURE
CONSERVANCY* AND ITS
WORK OF PROTECTING
NATURAL HABITATS. GM
CONTRIBUTES GENEROUSLY
TO THE CONSERVANCY'S
EFFORTS AND DOES ITS
SHARE TO PROTECT THE
ENVIRONMENT BY USING
CFC-FREE REFRIGERANT
AND THE LATEST ON-BOARD
DIAGNOSTIC SYSTEM
(OBD-II) TO HELP REDUCE
ENGINE EMISSIONS.



*Tailight Sentinel automatic
headlamp control is standard
on both Eighty Eight models.*



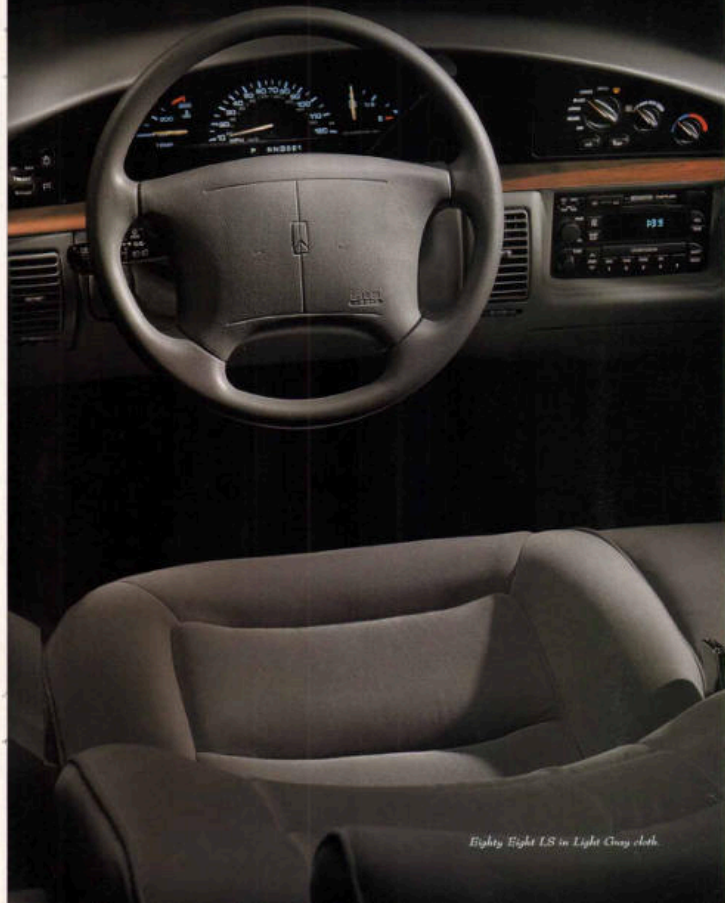
*Controls for the standard power
windows and door locks are
conveniently located on the
armrest for easy adjustment.*

The full-size, 6-passenger interior of Eighty Eight is designed for long-term comfort and stress-free driving. The wide, 55/45 divided bench front seats with standard recliners are individually adjustable and upholstered in a rich fabric. The sweeping dash combined with the roomy cabin and a wealth of standard comfort and convenience features help create an inviting, luxurious environment that will keep you comfortable and relaxed no matter how long your trip.

*Luxurious leather-trimmed seating areas
are available on Eighty Eight LS.*



Standard interior features that enhance Eighty Eight LS comfort include an 8-way power driver's seat, AM/FM stereo with cassette player, 6-speaker Dimensional Sound system, cruise control, TILT/Wheel adjustable steering column, and much more.



Eighty Eight LS in Light Gray cloth.



RISE AND RARFLIES
WITH ITS FULL
INDEPENDENT SUSPENSION
AND THE STABILITY OF
FOUR-WHEEL DRIVE,
EIGHTY EIGHT IS ABLE TO
GELLEN RESPONSIVE
HANDLING, EXCELLENT
BRAKE PERFORMANCE,
AND CONTROLLED WHEEL
MOTION TO COMBINE THE
BEST OF FUNCTIONAL
PERFORMANCE QUALITY
WITH THE PRECISION OF
ADVANCED MOTORCYCLE
ENGINEERING.



Eighty Eight LS in Light Gray cloth.



ENVIRONMENTALLY SOUND
GENERAL MOTORS IS
COMMITTED TO THE NATURAL
CONSERVANCY AND THE
WELL-BEING PROTECTION
NATURAL HABITATS. GM
CONTRIBUTES SIGNIFICANTLY
TO THE CONSERVANCY'S
EFFORTS AND DOES ITS
SHARE TO PROTECT THE
ENVIRONMENT BY USING
EPA-FREE REFRIGERANT
AND THE LATEST ON-BOARD
DIAGNOSTIC SYSTEM
OBD-II TO HELP REDUCE
ENGINE EMISSIONS.



Cougar 1.8i in Medium Green Metallic



RISE AND FALLING
WITH THE ROLL
INDEPENDENT SUSPENSION
AND THE STABILITY OF
FRONT-WHEEL DRIVE
EIGHT EIGHT IS ABLE TO
BELLOW BUMPABLE
HANDLING EXCELLENCE
BODY ADAPTATION
AND CONTROLLED RIDE
MOTION. IT COMBINES THE
BEST OF TRADITIONAL
MERICAN RIDE QUALITY
WITH THE PRECISION OF
REAR-WHEEL DRIVE
HANDLING.



ECOLOGICALLY SOUND
 ORIGINAL MOTORS IS
 COMMITTED TO THE NATURE
 CONSERVANCY AND ITS
 MISSION OF PROTECTING
 NATURAL HABITATS. GM
 CONTRIBUTES SIGNIFICANTLY
 TO THE CONSERVANCY'S
 EFFORTS AND DOES ITS
 SHARE TO PROTECT THE
 ENVIRONMENT BY USING
 CFC-FREE REFRIGERANT
 AND THE LATEST SWIRLING
 CATALYTIC SYSTEM
 DESIGNED TO HELP REDUCE
 ENGINE EMISSIONS.

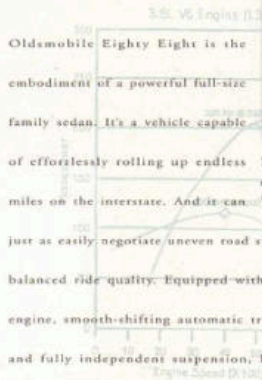


Eighty Eight LS in Light Bronze Metallic.

Full-sized and fully equipped,
 yet amazingly sure-footed and smooth.

Oldsmobile Eighty Eight is the
 embodiment of a powerful full-size
 family sedan. It's a vehicle capable

of effortlessly rolling up endless
 miles on the interstate. And it can
 just as easily negotiate uneven road surfaces without upsetting its
 balanced ride quality. Equipped with a powerful and refined V6
 engine, smooth-shifting automatic transmission, anti-lock brakes
 and fully independent suspension, Eighty Eight goes about its
 business quietly and smoothly. It delivers world-class performance
 in a traditional American sedan.



*The potent 3800 Series II V6 engine has been
 rated as one of the world's "ten best engines" by
 Ward's Auto World, January 1995.*

*The 4-wheel independent suspension system helps smooth out
 the bumps, yet provides precise, controlled handling and response.*

Standard features that contribute to Eighty Eight's performance include
 the 3800 Series II V6 engine, 4-speed electronic-shift automatic transmission, fully
 independent suspension, power rack-and-pinion steering system, and much more.



RISE AND HANDLING
 WITH ITS FULLY
 INDEPENDENT SUSPENSION
 AND THE STABILITY OF
 FRONT-WHEEL DRIVE,
 EIGHTY EIGHT IS ABLE TO
 DELIVER RESPONSIVE
 HANDLING, EXCELLENT
 BUMP ABSORPTION
 AND CONTROLLED RISE
 MOTION. IT COMBINES THE
 BEST OF TRADITIONAL
 AMERICAN RIDE QUALITY
 WITH THE PRECISION OF
 ADVANCED SUSPENSION
 ENGINEERING.

SAFETY AND SECURITY		EIGHTY EIGHTY EIGHT EIGHT LS	
Auto lock power front door/driver door brakes	•	•	•
Brake/transmission shift interlock	•	•	•
Electronic traction control	•	•	•
Dual air bags	•	•	•
Sport front and rear outboard safety belts with front height adjustment and rear Child Comfort Outlets, plus front and rear center lap belts	•	•	•
Door door kill circuitry lock	•	•	•
Remote-control lock/unlock system with illumination feature and retained accessory power, includes two key-chain transmitters with panic button and sleep feature	•	•	•
Illuminated exterior/side system	•	•	•
PASS-Key vehicle security system	•	•	•
Daytime running lamps	•	•	•
Hidelen headlamps with lock-to-park feature	•	•	•
Side and electric rear window defoggers	•	•	•
Dual outside mirrors with driver's remote	•	•	•
Dual power outside mirrors	•	•	•

MECHANICAL

3000 Series II V6 engine with sequential port fuel injection	•	•
4-speed electronic shift automatic transmission	•	•
Front wheel drive	•	•
Power rack and pinion steering	•	•
4-wheel independent suspension	•	•
On-board diagnostic system (OBD-II)	•	•
Maintenance-free battery	•	•
High-capacity engine cooling equipment	•	•
Stainless steel exhaust system	•	•
Engine lock system	•	•

EXTERIOR

18-inch hollow wheel discs	•	•
18-inch aluminum wheels	•	•
PMS-70R16 black sidewall all-season radial tires	•	•
Side-impact door beams with EZ-Key® side-impact standard and rear window	•	•
Fiber optics	•	•

COMFORT AND CONVENIENCE

EIGHTY EIGHTY EIGHT EIGHT LS	
Air conditioning with CPC-free refrigerant	•
Rear-seat ventilation outlets	•
Teletight Seatbelt automatic headlamp control	•
Service control	•
Power door locks (automatic programmable on LE)	•
TILT/Whod adjustable steering column	•
Power windows with driver's auto-down	•
Analogue gauge cluster	•
Available 3 rd row power seat	•
Lighting package (no locks, courtesy, glove box, mirror and trunk lamps, plus floor/dome-mounted controls)	•
Dual front and rear reading lamps	•
Dual van storage with auxiliary switches	•
Dual lighted door vanity mirrors	•
Map pockets in front doors and seat backs	•
Headlamp and turn signal indicator bulbs	•
Reminders for washer fluid and ignition key on	•
Driver trunk bins with cargo net	•
Three trunk lock releases	•

AUDIO SYSTEMS

Dyno ETR AM/FM stereo with radio/cassette, digital locks, 4 speaker exterior-range sound system and power antenna	•
Dyno ETR AM/FM stereo with cassette player, automatic tone control, autoantic digital clock, frequency Dimensional Sound system and power antenna	•
Dyno ETR AM/FM stereo with CD and cassette player, automatic tone control, autoantic digital clock, Proprietary Dimensional Sound system and power antenna	•

SEATING AND TRIM

SS4S divided bench front seat with dual recliners and center storage armrest with cupholders	•
8-way power driver's seat	•
CDL interior trim	•
Leather-trimmed seating areas (no leather seat center storage armrest with cupholders)	•
Carpeted floor and rear floor mats	•
• Standard • Optional • Not available	

Color Combinations

EXTERIOR COLORS	GRAPHITE*	SLUE**	LIGHT GRAY	LIGHT BEIGE
Medium Gray Metallic (03)	•	•	•	•
Bright White (00)	•	•	•	•
Light Blue Metallic (30)	•	•	•	•
Black (41)	•	•	•	•
Medium Green Metallic (47)	•	•	•	•
Medium Green Gray Metallic (47)	•	•	•	•
Dark Green Metallic (48)	•	•	•	•
Light Blue Metallic (09)	•	•	•	•
Red Metallic (72)	•	•	•	•
Dark Red Metallic (77)	•	•	•	•

*Color not available on LE only. **Available on LE only.



The paint color samples shown above may vary slightly from actual vehicle color due to the printing process.

EXTERIOR DIMENSIONS	
Wheelbase (in)	101.6
Length (in)	203.0
Width (in)	74.7
Height (in)	55.7
Curb weight (lb)	3455
Tire width, front/rear (in)	60/60/64
Turning circle (ft, curb-to-curb)	40.7 left/39.4 right

INTERIOR DIMENSIONS	
Headroom, front/rear (in)	37.3/38.3
Legroom, front/rear (in)	42.5/38.7
Shoulder room, front/rear (in)	59.0/58.3

CAPACITIES

Seating capacity (passengers)	6
Tire volume (cu ft)	179
Fuel capacity (gal)	18.0

EPA ESTIMATED FUEL ECONOMY	
3000 Series II V6 (reg. cycle)	29/30

POWER TEAM	
ENGINE	3000 SERIES II V6
Displacement	3.8 liter (231 cu in)
Horsepower	205 @ 5200 rpm
Torque (ft-lb)	230 @ 4000 rpm
Fuel delivery	Sequential port fuel injection
Transmission	4-speed electronic shift automatic



OWNER AFTER-CARE

IN ADDITION TO OUR

3-YEAR/36,000-MILE

(WHICHEVER COMES FIRST)

BUMPER-TO-BUMPER LIMITED

WARRANTY, WE ALSO OFFER

COURTESY TRANSPORTATION,

FREE TIRP HOUSING AND

24-HOUR ROADSIDE

ASSISTANCE BY CALLING

1-800-442-OLDS.

AT OLDSMOBILE, WE'RE

COMMITTED TO YOUR

SATISFACTION LONG AFTER

THE PURCHASE OF

YOUR CAR.

A Word about Oldsmobile

THE GM CARD

Every time you use the all-annual for GM MasterCard, GM will credit 5% of your purchase toward buying or leasing a new Oldsmobile. It's a great way to save. You can also use the card for other GM products. Call 1-800-GM-CARD for more information, including annual limits and restrictions.

ACCELERATED EARNINGS NETWORK

Visit participating GM retailers for up to 3% in GM Card savings on eligible parts and service transactions. Call 1-800-947-1000 for more information.

EMERGENCY SERVICE

Smart-see lists qualified customers for the portion of the vehicle they own, rather than paying for the entire vehicle as you would with traditional financing. You'll also enjoy lower up-front costs and lower monthly payments. This, plus, you'll be able to drive a new vehicle more often or drive a higher-priced model. Ask your Oldsmobile retailer for more information.

FOR OCCUPANT PROTECTION

• Driver and right front passenger Supplemental Inflatable Restraints • Manual lap/shoulder safety belts, driver and right front passenger • Manual lap/shoulder safety belts, outboard rear-seat positions • Manual lap safety belts, center seat positions • Safety belt use reminder system • Energy-absorbing steering column • Energy-absorbing instrument panel • Laminated windshield glass, without hood • Improved safety glass, side and rear windows • Interlocking door latches • Side door beams • Passenger-guard inside door lock handle • Safety anchors • Head restraints, front, side/rear, driver and right front passenger • Dual sun visors • Head-curtain inside rearview mirror • Security door locks and door retention components • Rear door child-safety lock • Three window locksets • Front and rear crash zones • Downer lock radiator cap

FOR CRASH AVOIDANCE

• Automatic daytime running lamps • Side mirror lamps and reflectors • Parking lamps • Four forward-facing lights • Back-up lamps • Center high-mounted stoplamp • Directional signal control • Windshield defogger, washer and wiper speed wipers • Inside day/night rearview mirror • Outside rearview mirror • Rain sensor • Dual-action hood latch (front opening) • Low-glass break (inside windshield) wipers, wiper arms and blades • Safety recall alert tone • Tire with built-in tread wear indicators • Illuminated master and defogger controls • Brake/transmission shift interlock • Audible disc brake lining wear indicators • Electric rear window defogger • Door opening latch/defogger

FOR TRIP DEFERENCE

• PASS-Key vehicle security system • Tilt-adjustment steering column lock • Theft-deterrent key lock system • Ignition key removal audible reminder • Remote inside trunk release • Vehicle identification number • Laser-etched VIN plate

The 1996
OLDSMOBILES



Aurora



Corsica Sedan



Ninety Eight



Corsica Wagon



L33



Achieva Sedan



Eighty Eight



Achieva Coupe



Cutlass Supreme Sedan



Silhouette



Cutlass Supreme Coupe



Bravada

