

1999

PLYMOUTH

2000 NEON

BREEZE

VOYAGER

PROWLER





1999 Voyager Expresso



1999 Breeze Expresso



1999 Prowler



1999 Grand Voyager Expresso



2000 Neon LX

Distinguished by contemporary styling, interior comfort and convenience, meaningful innovation and value that results in year after year of easy-going ownership, Plymouth cars and minivans are designed to deliver more than you pay for. Much more.

Every bit as versatile as you are, Plymouth vehicles are an active participant in any lifestyle. Packing to move? Heading out for a long weekend? Traveling to the store to stock up on groceries? Plymouth doors and trunks open wide to reveal generous and inviting interior space. Seats fold down, or on minivans roll away to accommodate people and their belongings in various configurations.

Plymouth's solid performance, stable handling and advanced safety features provide an equally confident driving experience on main roads or Main Street. Which provides us the confidence to recommend Plymouth Voyager, Plymouth Breeze or the new 2000 Plymouth Neon as substantial yet very affordable ways to get where you're going and arrive in style and comfort.

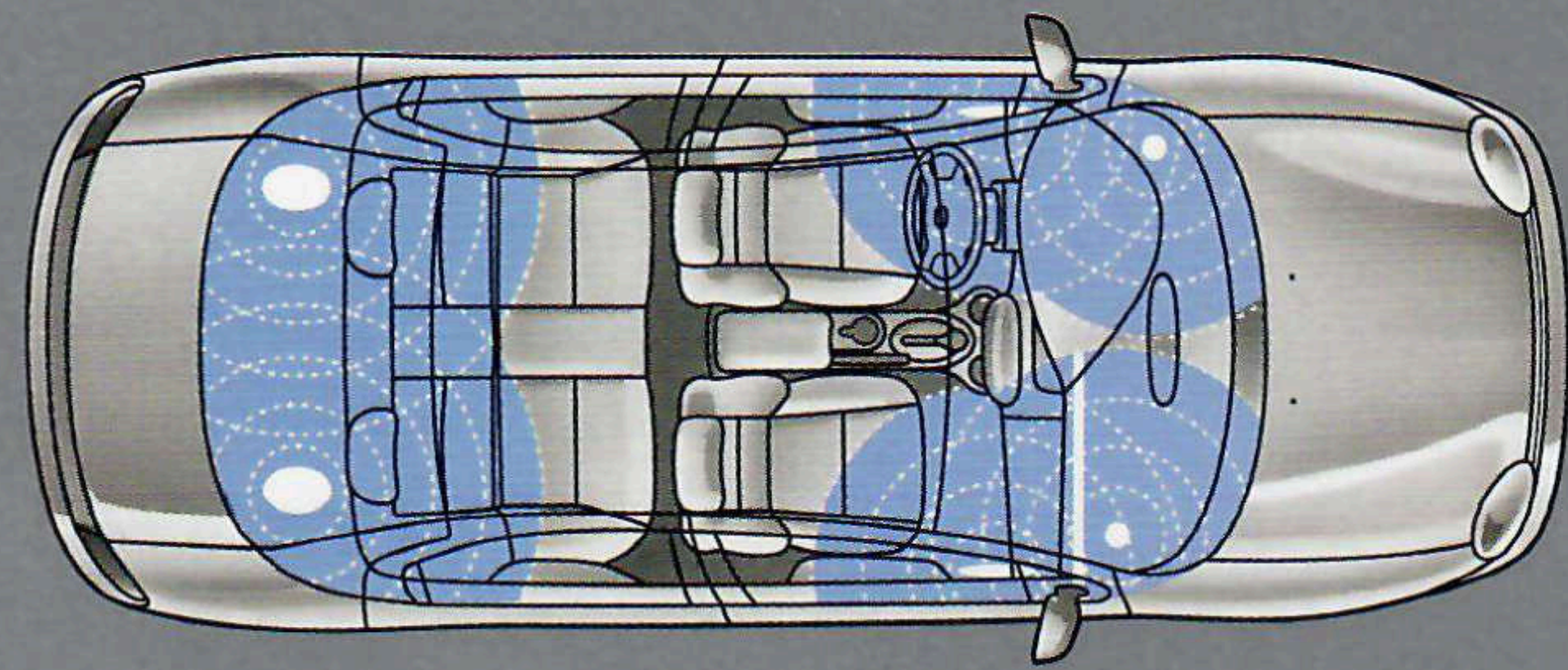
Since the time of printing, some of the information you'll find in this catalog may have been updated. Ask your dealer for details. Some of the equipment shown or described throughout this catalog is available at extra cost.

2000 NEON

2000 ...Think about it.

What do you expect? You expect something new. Something exciting. Maybe even something a little surprising. Newly redesigned from its racy front end, to its richer interior fabric to the daring lines of its tail, Neon is a combination of style and substance that simply will not be ignored. Add to that the performance

of its 132-horsepower 2.0-liter 16-valve four-cylinder engine, then tack on some goodies like ABS with traction control and an in-dash CD player and you've got a serious touring sedan. Surprised? You shouldn't be. Neon has always been a substantial car, built for the real world. And now you can drive one into the next millennium.



Six standard speakers and an available in-dash CD player or four-disc CD changer* lets your music sing through.

*Late availability.



Neon is Plymouth's first vehicle interior designed using Virtual Reality technology, resulting in controls that are comfortably within your reach.



Surround yourself in comfort. Five adults fit comfortably in the Neon LX interior, shown here in Taupe.



Neon LX in Deep Cranberry

2000 NEON

Slip inside a Neon and take a moment to look around. Notice the roominess and the fact that there's a place for nearly everything. A cubby here. A slot there. A pocket over here. Plus, there's room for five adults to ride comfortably. That's cab-forward design in action. The longer wheelbase and wider stance also make for a better ride for everyone. Updated fabric on the seats looks as rich as it feels. And the contoured front seats, with added lumbar support,

cradle you in comfort. A new, oversized cup holder accommodates a container for all thirsts, be it a coffee mug or a big, 44-ounce cup. And you have three other cup holders to spare. It may seem surprising to find interior appointments like the lighted driver-side visor mirror, illuminated door-mounted switches and available power, heated exterior mirrors in a Neon — but only at first. You'll get used to them in no time. In fact, you'll wonder how you ever lived without them.



Neon's newly dressed-up trunk measures in at a cavernous 13.1 cubic feet.



Sitting behind the wheel of Neon just feels right. The front seats have added lumbar support to make your drive a little more comfortable.



Neon's 60/40 split-folding seatbacks offer versatility. Lower one side or both sides, depending on who or what you want to carry.

Properly secure all cargo.



Neon in Salsa Red

NEON FEATURES

Theater lighting dims the interior lamp gradually after you close the door.



The 2.0-liter 16-valve four-cylinder engine kicks out 132 horsepower.



Available power dual side mirrors are heated to melt away ice and snow.

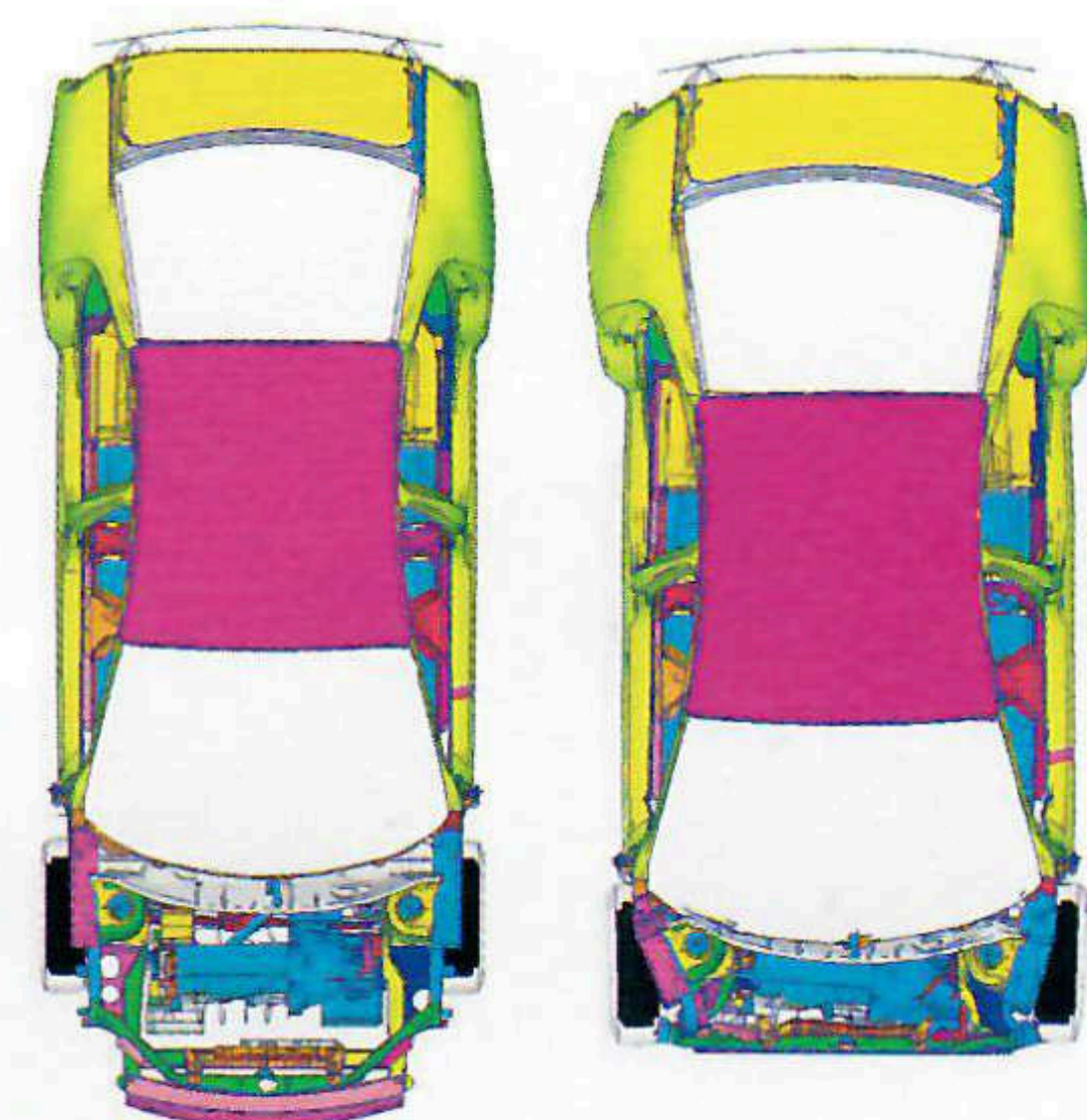
Neon's center console has room for CDs and change. Its lid hides a cup holder for backseat riders.



Neon's climate control ensures a comfortable temperature for all passengers.

2000 Neon has more combined safety and security features available than any car in its class.* Neon offers safety features like Next Generation driver and front-passenger air bags[†], and improved dynamic side-impact intrusion protection. For added safety, Neon has built-in head-impact provisions[‡] incorporated into the upper trim, protecting occupants' heads in the event of a collision.

* Based on *Automotive News* Small Car Segment.
[†] Certified to the Federal Regulations that allow less forceful air bags. Always use seat belts. Remember a backseat is the safest place for children.
[‡] Late availability.



Neon's improved front-end crumple zones take the force out of a crash and distribute it more evenly by doing just what it says — crumpling.

Neon's available 15-inch aluminum wheel



SELECT STANDARD FEATURES

- 2.0-liter SOHC 16-valve four-cylinder engine
- Next Generation driver and front-passenger air bags*
- Power outlet
- Body-color bodyside moldings
- Power-assisted front disc/rear drum brakes
- Floor-mounted console
- Two rear coat hooks
- Digital clock, integral to all radios
- Three front cup holders
- One rear cup holder, in console lid
- Electric rear window defroster
- Body-color door handles
- Dome lamp, theater dimming
- Child-protection rear door locks
- Dynamic side-impact intrusion protection
- Front and rear carpeted floor mats
- 12.5-gallon fuel tank
- Tinted glass, all windows
- Locking glove box
- Analog instrument cluster, includes speedometer, odometer, trip odometer; gauges for fuel level, engine coolant temperature; warning lamps for brake system, low oil pressure, check engine, seat belts, air bags and high beam headlamps
- Map pockets in front doors
- Driver-side remote, passenger-side manual exterior mirrors
- Day/night rearview mirror
- Scuff pads on lower door sills
- Height-adjustable front shoulder belts with traveling inboard buckles
- Power rack-and-pinion steering
- AM/FM stereo radio with cassette player and six speakers
- Four-wheel fully independent suspension
- Compact spare tire
- Trunk lamp
- Two-speed wiper system with variable intermittent mode

* Certified to the Federal Regulations that allow less forceful air bags. Always use seat belts. Remember a backseat is the safest place for children.

AVAILABLE PACKAGES

Neon LX — Includes Power Convenience Group (Power heated foldaway exterior mirrors and front windows), Sentry Key™ Security Group (engine immobilizer, peripheral alarm, remote keyless entry, power door locks with central locking remote power trunk release and tachometer), air conditioning, fog lamps, height-adjustable steering column, leather-wrapped steering wheel and shift knob, three passenger-assist handles, and 15-inch tires and wheels with deluxe wheel covers.

EXTERIOR COLORS

Deep Cranberry Pearl Coat	
Bright Silver Metallic	
Deep Amethyst Pearl Coat	
Forest Green Pearl Coat	
Flame Red	
Cinnamon Glaze Metallic	
Salsa Red Pearl Coat	
Black	
Bright White	
Patriot Blue Pearl Coat*	

* Late availability.

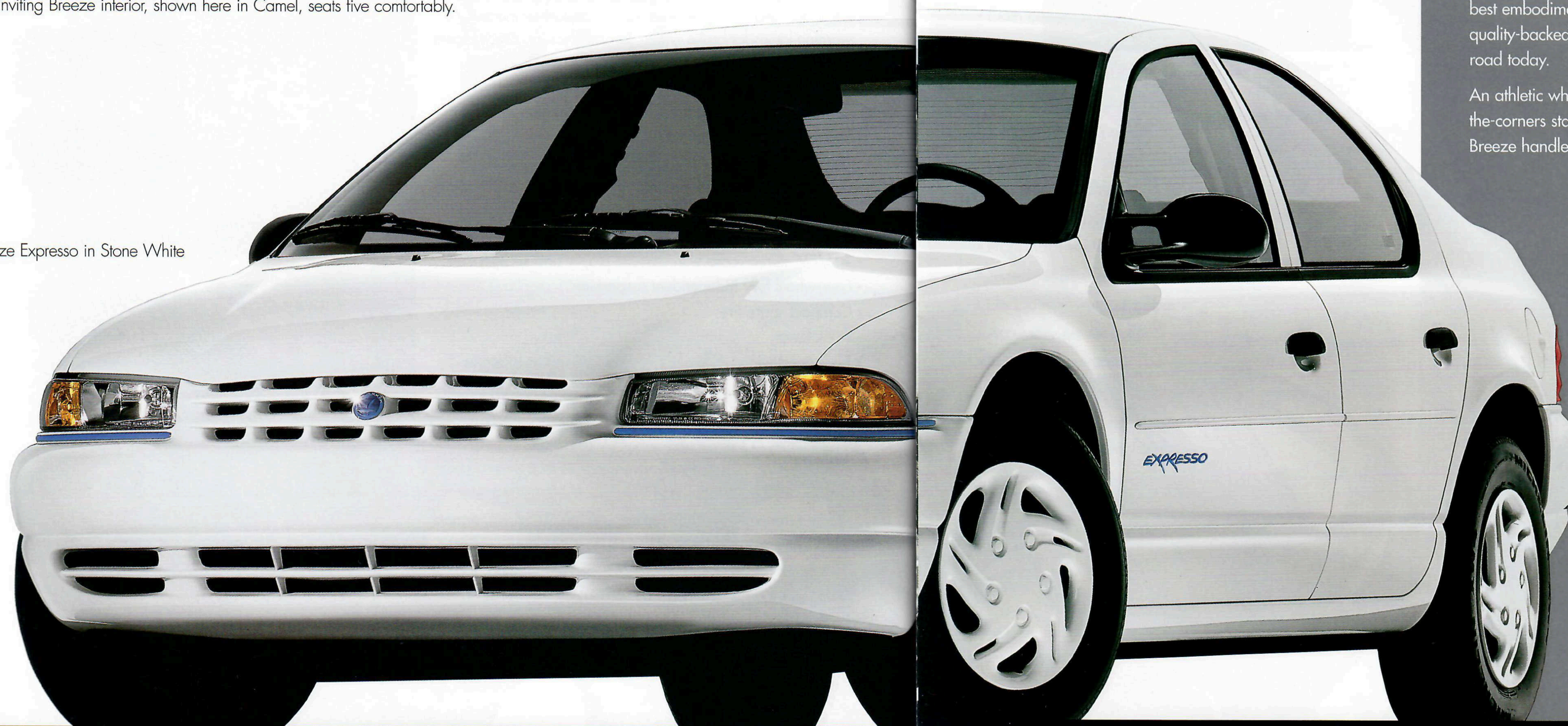
FABRICS

Picasso Cloth in Taupe	Picasso Cloth in Agate
Shadow Cloth in Taupe	Shadow Cloth in Agate



The inviting Breeze interior, shown here in Camel, seats five comfortably.

Breeze Expresso in Stone White



Maybe they call it a **Breeze because it's so easy to own.** Attractive contemporary styling makes the 1999 Plymouth Breeze easy on the eye. A variety of comfort, convenience, performance and safety features at a very affordable price makes it easy on the budget, too. A roomy interior that's versatile makes Breeze easy to live with. And its confident, fun-loving personality makes Breeze easy to like. All things considered, this spirited sedan is easily one of the best embodiments of quality-backed value on the road today.

An athletic wheels-toward-the-corners stance helps Breeze handle curves with

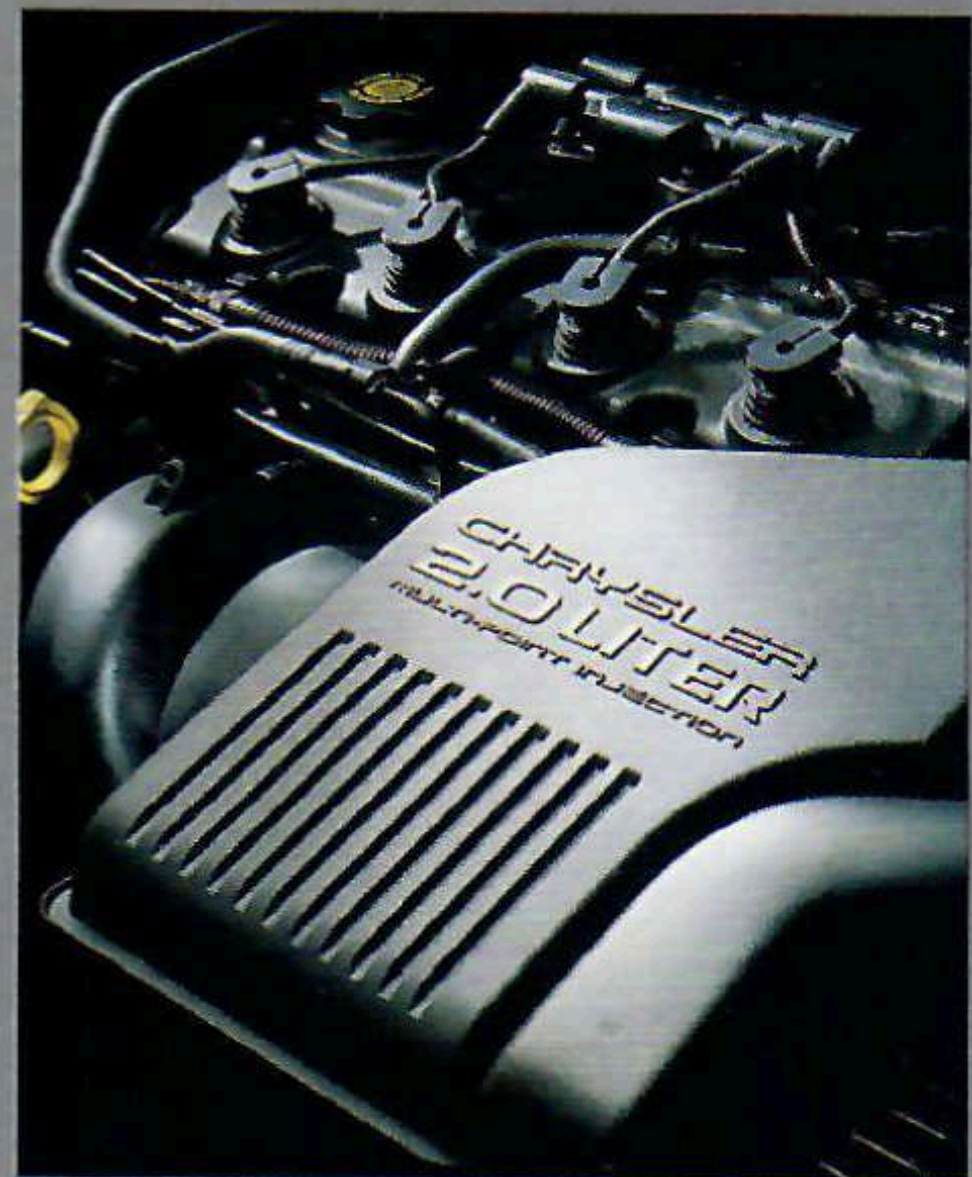
ease. Other stabilizing factors: rail-through construction which relies on two underbody rails of high-strength steel running uninterrupted from front to rear to provide outstanding body stiffness. And a fully independent modified double-wishbone suspension equipped with unequal-length control arms, gas-charged shocks, and front and rear stabilizer bars that ease Breeze over bumps and around bends.

To add even greater value to the already affordable Breeze, choose the Power and Convenience Package which includes **power windows, power door locks, power heated exterior mirrors and rear floor mats, all at no extra charge.**

BREEZE FEATURES



No-extra-charge power heated exterior mirrors are included in the Power and Convenience Package.



Breeze keeps its cool thanks to standard ozone-friendlier CFC-free air conditioning.

The standard 2.0-liter SOHC 16-valve engine turns out a healthy 132-horsepower. A 150-horsepower 2.4-liter DOHC 16-valve engine is available.



The ergonomically correct Breeze cockpit features levers at your fingertips and large easy-to-read gauges.

Cargo that's too long to fit in the trunk?

Not a problem for Breeze. Simply fold down the rear bench seatback to create a pass-through trunk specially designed to increase versatility and cargo capacity. Store golf clubs, bring along a beach umbrella or move your

favorite table to its location in your new apartment. Breeze doors and trunk lid open wide to assist with loading and unloading. Also perfect for stashing essentials is the standard center floor console with storage bin, plus two front and two rear cup holders.



Breeze maximizes cargo space with a convenient fold-down rear seat.

Properly secure all cargo.

Sporty 14-inch Nitro wheel covers are included on Breeze Expresso.



SELECT STANDARD FEATURES

- 2.0-liter SOHC 16-valve four-cylinder engine
- Five-speed manual transaxle
- Front-wheel drive
- Power-assisted disc/drum brakes
- Power-assisted rack-and-pinion steering
- Four-wheel fully independent modified double-wishbone suspension
- Next Generation driver and front-passenger air bags*
- Dynamic side-impact intrusion protection
- Child-protection rear door locks
- Height-adjustable front shoulder belts with traveling inboard buckles
- Air conditioning with rear-seat outlets
- Full-length center console
- Covered storage armrest with coin and pen holders
- Height-adjustable steering column
- AM/FM stereo radio with six speakers
- Cloth bucket seats with manual reclining seatbacks
- Cloth bench seat with folding rear seatback
- Driver and front-passenger covered visor vanity mirrors
- Dual remote control twin-post exterior mirrors
- Locking, lighted glove box
- Front door map pockets
- Dual front cup holders
- Two rear stowable cup holders
- Front storage bin with rubber mat
- Front carpeted floor mats
- Speed-sensitive intermittent windshield wipers
- Electric rear window defroster
- Accessory power outlet
- Remote release trunk
- 15.7-cubic foot trunk with sill-mounted hinges
- 14-inch tires and wheels
- Sparkle Silver wheel covers

* Certified to the Federal Regulations that allow less forceful air bags. Always use seat belts. Remember a backseat is the safest place for children.

AVAILABLE BREEZE EXPRESSO PACKAGE
 "Expresso" badging ▪ Accent-color front and rear fascia accents and Mayflower medallions ▪ 14-inch Nitro wheel covers* ▪ Rhythm interior cloth ▪ AM/FM stereo radio with cassette and six speakers available on the 21B, 22B and 24B Packages.

*Stone White on Stone White vehicles.

EXTERIOR COLORS

Deep Slate Pearl Coat	
Stone White	
Inferno Red Tinted Clear Coat	
Deep Cranberry Pearl Coat	
Deep Amethyst Pearl Coat	
Bright Platinum Metallic	
Forest Green Pearl Coat	
Champagne Pearl Coat	
Flame Red	
Light Cypress Green Pearl Coat	

FABRICS

	
Camel Cloth	Silver Fern Cloth
	
Agate Cloth	Rhythm Expresso Cloth (Agate)

VOYAGER

Take a look at the 1999 Plymouth Voyager. There's a lot to see. And even more to appreciate. Like the refinement and innovation that are designed into every feature. And, of course, the very inviting value-packed price tag. Versatile and spacious with a car-like ride, Voyager features a responsive 2.4-liter DOHC SMPI engine, automatic transmission, power steering, AM/FM stereo, deluxe intermittent wipers, and much more. For unsurpassed savings on many high-value conveniences, you'll definitely want to add the Family Value Package* to your Plymouth Voyager. This exceptional package choice includes CFC-free

air conditioning, accommodating seven-passenger seating, passenger seatback assist strap, rear-floor silencer sound insulation, cargo net between front seats, and passenger underseat storage drawer. And for outstanding versatility you'll appreciate day in and day out, be sure to choose the available driver-side sliding door. Since 1984, Voyager has set the standard for minivans. That's why when you sit behind the wheel, you'll instinctively know that you haven't compromised a thing — Plymouth Voyager is one of the best minivan choices you can make.

* Available on Voyager and Grand Voyager models. Package content may vary depending on model. See your dealer for details. Properly secure all cargo.

Automobile Magazine
All-Star winner three years in a row.
1996, 1997, and 1998 model years.

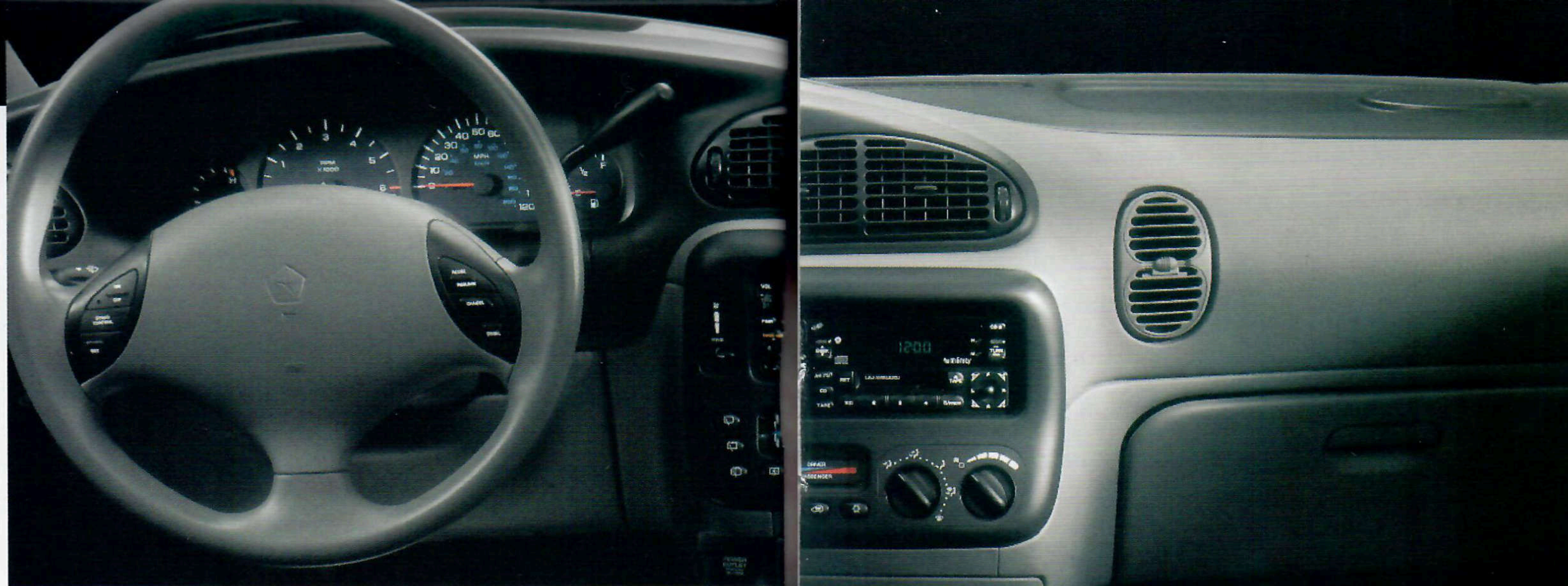
Consumers Digest
A Best Buy for 10 years in a row.
1990-1999 model years.



Family Value Package* includes comfortable seven-passenger seating.

Voyager with available Family Value Package in Bright White

Nothing is beyond your reach. Within Grand Voyager's spacious and quiet cabin, all controls and instrumentation (right) are designed to minimize distraction while contributing an easy interactive relationship between minivan and driver.



Grand Voyager SE in Deep Cranberry

Outstanding versatility for those who need a little space in their life. Inside and out, front to back and side to side, Plymouth Grand Voyager is capable of delivering more room, more versatility and more comfort. It's an extra 13.3 inches longer and 25.6 cubic feet larger in cargo volume than a standard Voyager. That simply means with the rear bench seats removed, there's an enormous 168.5 cubic feet of cargo space. And here's a practical application: Grand Voyager — with the deluxe seven-passenger seating — can carry a 4' x 8' sheet of plywood (below) with the rear seats folded down and the liftgate closed. There's even room to slide 28 2x4s under the backseats.

Grand Voyager Espresso was designed by Plymouth to make everyday driving seem more than everyday. For a truly distinctive styling flair that's matched to high-value equipment, pair the available Espresso Package* with Grand Voyager SE. It's the perfect way for you to express your fun side or add a little something special to your daily commute. So, just how sporty do you want to be? Grand Voyager Espresso makes it easy ... eye-catching 15-inch Espresso wheel covers (set of four), AM/FM stereo radio with CD player, sunscreen and solar-control glass, distinctive Espresso badging, stylish accent stripes and unique Plymouth logo badge. Available on Voyager SE and Grand Voyager SE.

* See your dealer for a complete description of package contents. Properly secure all cargo.



VOYAGER FEATURES



New for 1999, a close-at-hand cargo net, between the front seats, conveniently holds small items.*

*Optional on base Voyager and Grand Voyager models.

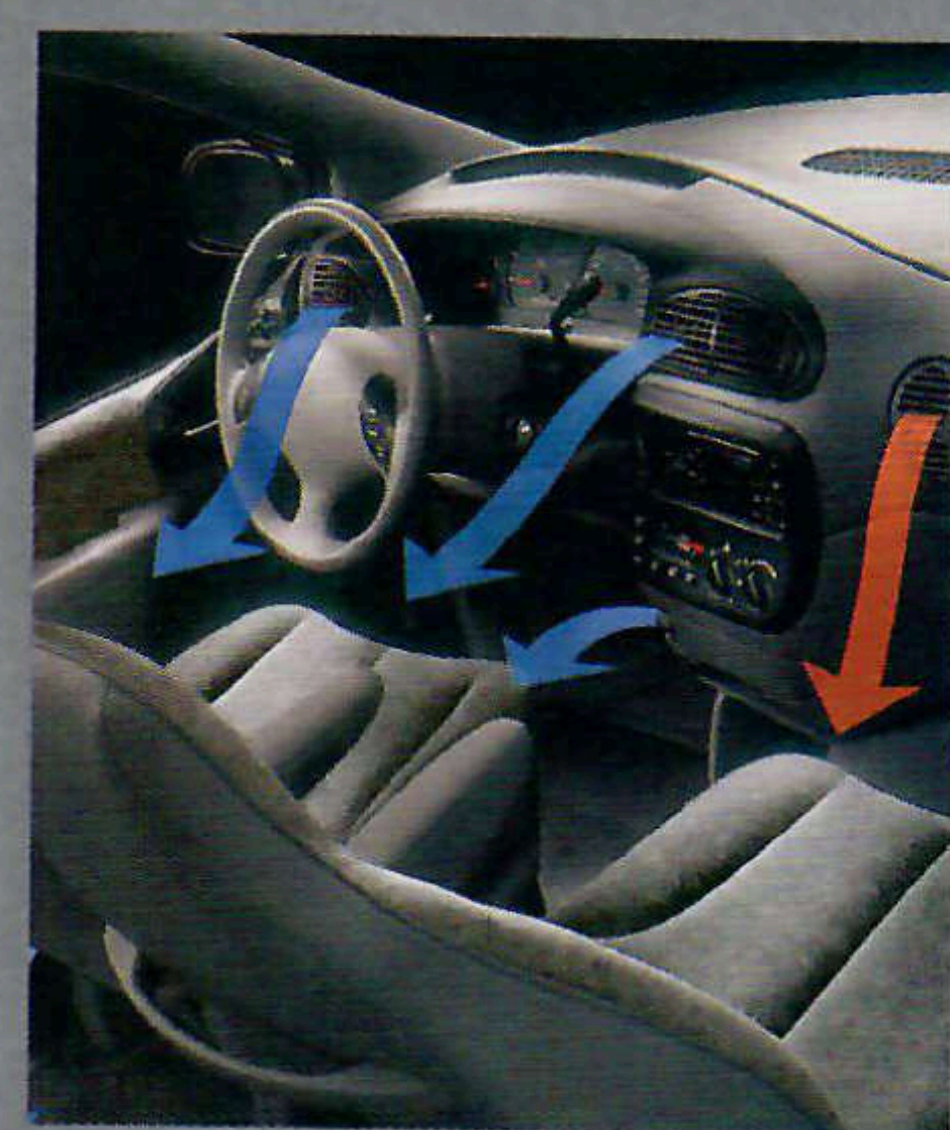


Easy Out Roller Seats® help make Voyager's advanced seating systems so flexible. Aircraft-style wheels on the middle and rear bench seats 'click' down for moving or removing a seat; then they 'click' back up to lock the seat firmly in place. For even greater convenience, they can be easily rolled to your storage area.



Lockable underseat storage drawer, on the passenger side, keeps valuable items out of sight and safely secured.†

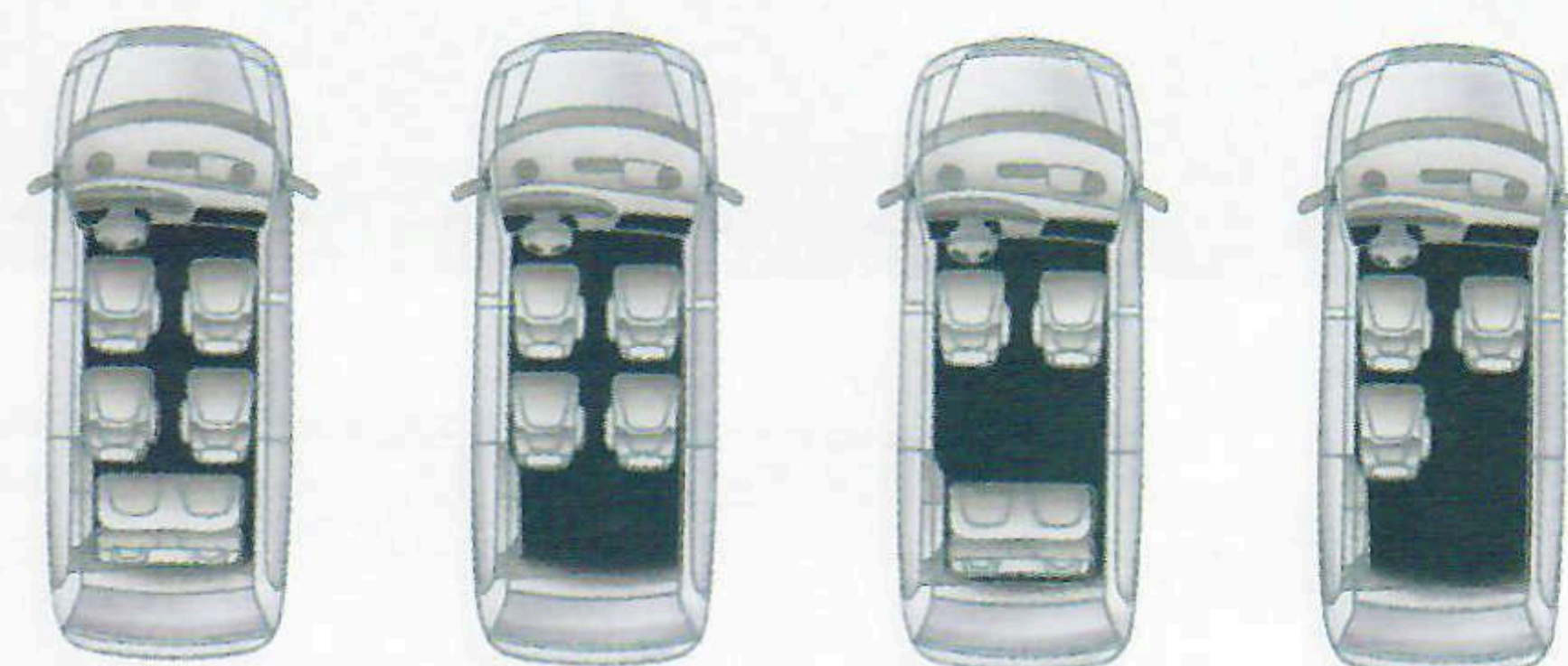
†Optional on base models.



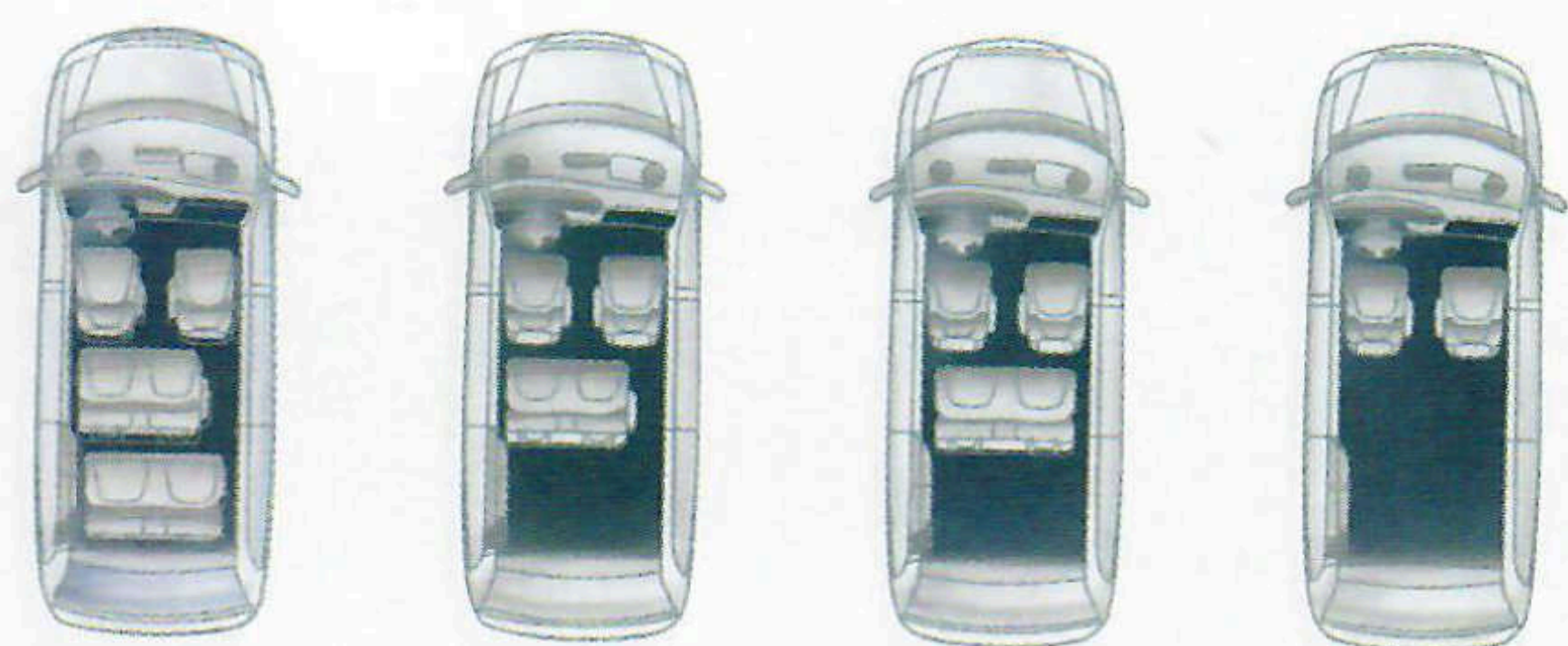
Available Dual Zone Temperature Control offers separate air and heating temperature regulation for both driver and front-seat passenger.

Every Plymouth minivan

— Voyager, Voyager SE, Voyager Expresso, Grand Voyager, Grand Voyager SE and Grand Voyager Expresso — gives you the unique ability to customize your interior with a wide variety of seating configurations ...



Quad Command Seating*



Bench Seating*

*Availability of bench seating (five- or seven-passenger) and Quad Command seating depends on model and/or available option choice.

Available 15-inch Expresso wheel covers add a sporty touch.



SELECT STANDARD FEATURES

- 2.4-liter DOHC 16-valve four-cylinder engine (Voyager only)
 - 3.3-liter OHV SMPI V6 engine* (Voyager SE and all Grand Voyagers)
 - Front disc/rear drum brakes
 - Power-assisted rack-and-pinion steering
 - Front MacPherson struts with rear monoleaf spring suspension
 - Next Generation driver and front-passenger air bags† with seamless door design
 - Meets current federal requirements for dynamic side-impact protection as well as current federal passenger car safety standards‡
 - Child-protection rear sliding door locks
 - Comfort-Fit Seat Belt System™
 - AM/FM stereo radio with four speakers
 - Five-passenger seating (seven-passenger seating on Grand Voyager)
 - Easy Out Roller Seats® (bench seating only)
 - P205/75R14 steel-belted all-season black sidewall tires
 - 14-inch wheel covers
 - Deluxe front and rear windshield wiper/washers with vehicle speed-sensitive intermittent delay
 - Driver's side sliding door (Voyager SE and all Grand Voyagers only)
- * 3.3-liter engines outside of CA, MA and NY have flex fuel (ethanol and/or unleaded gasoline) capability.
 † Certified to the Federal Regulations that allow less forceful air bags. Always use seat belts. Remember a backseat is the safest place for children.
 ‡ Excludes sunscreen glass.

Plymouth offers a wide variety of choices to perfectly equip your Voyager or Grand Voyager to your individual needs:

- Customer-PreferredSM Option Packages
- Quick-Order Option Groups
- Individual Options
- Family Value Package
- Expresso Package

Packaged options group popular high-value options together and offer savings over the same options if ordered separately. See your dealer for complete information regarding option choices and availability.

EXTERIOR COLORS



Deep Cranberry Pearl Coat 1, 2, 3



Forest Green Pearl Coat 1, 2, 3*



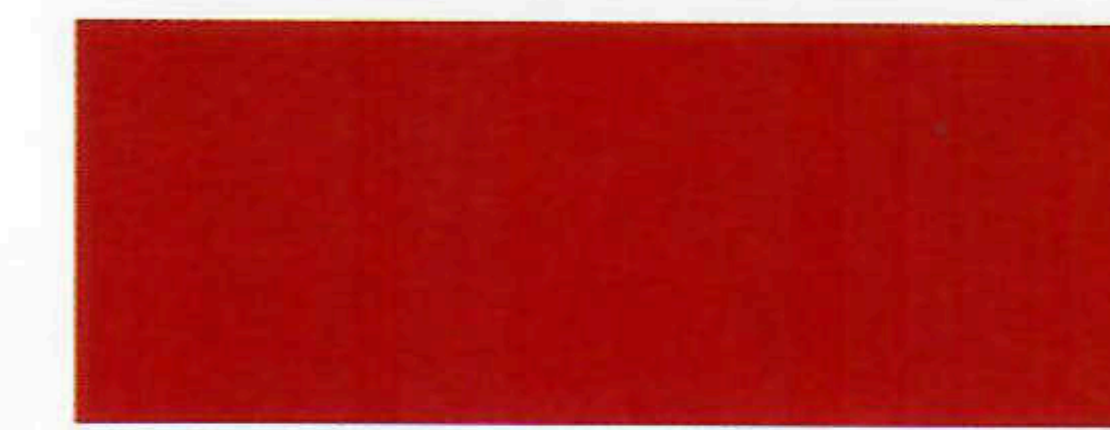
Deep Amethyst Pearl Coat 1, 2, 3



Bright White 1, 2, 3†



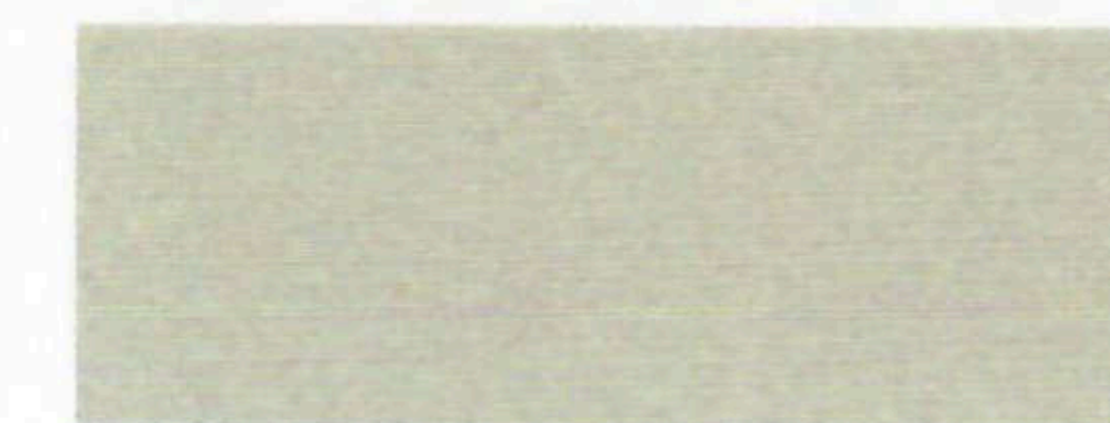
Alpine Green Pearl Coat 1, 2



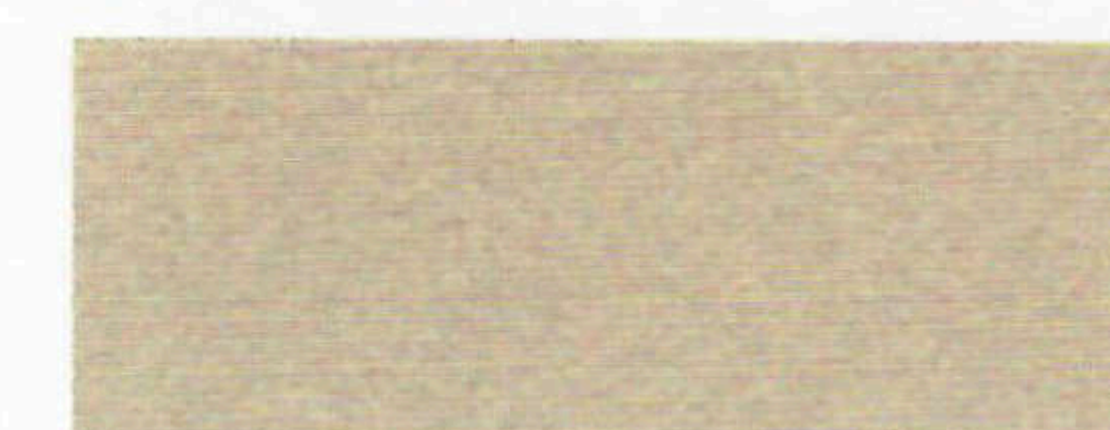
Flame Red 1



Island Teal Satin Glow 1, 2, 3



Light Green Cypress Pearl Coat 1, 2



Champagne Pearl Coat 2

FASCIA



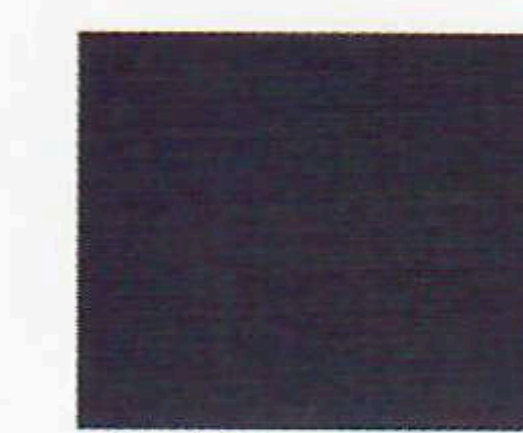
Dark Neutral Gray



Gray Green



Dark Teal



Cool Gray

FABRICS



Newport Cloth — Mist Gray

Wilmington Cloth — Mist Gray



Newport Cloth — Silver Fern

Wilmington Cloth — Silver Fern



Newport Cloth — Camel

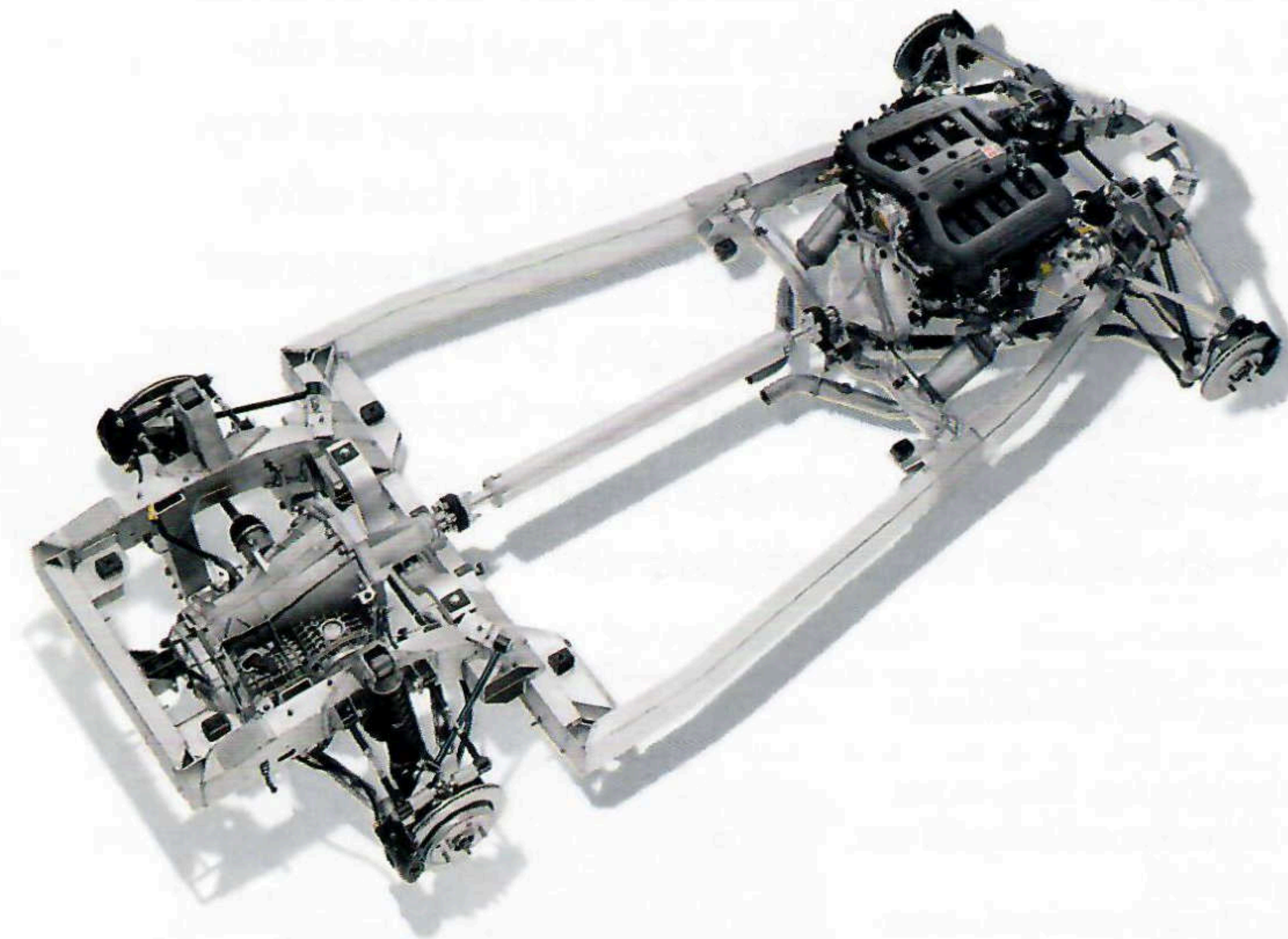
Wilmington Cloth — Camel

*Silver Fern interior only.
 †Mist Gray interior only.
 1 = Voyager/Grand Voyager
 2 = Voyager SE/Grand Voyager SE
 3 = Voyager SE/Grand Voyager SE with Expresso Package



Prowler's a luxury car for a hot rod. Leather-trimmed buckets and a superb sound system coddle and entertain driver and passenger.

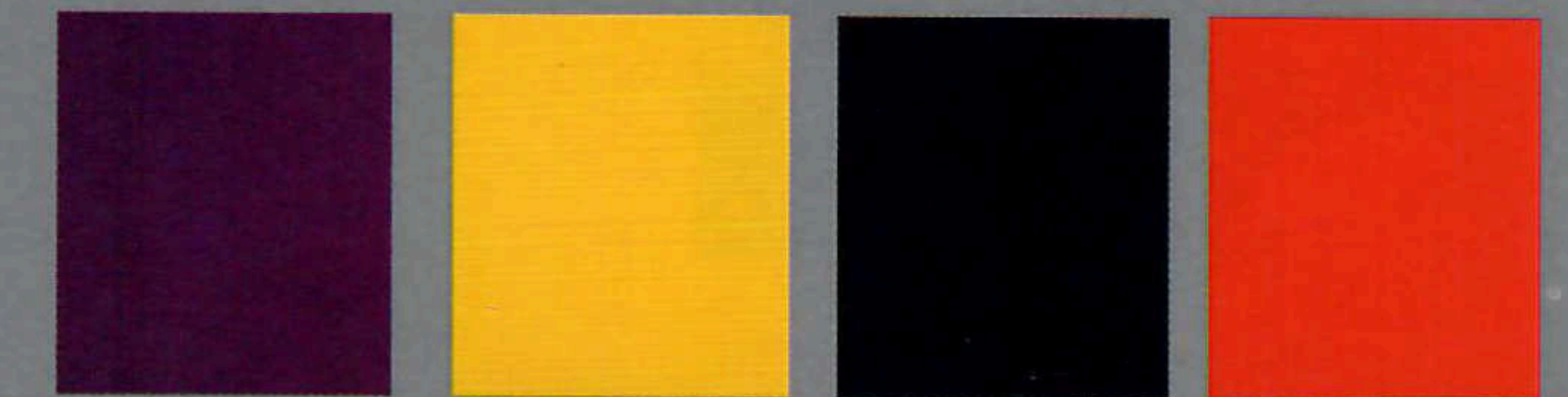
PROWLER



Way beyond buggy-sprung. Like any proper highboy roadster oughta, Prowler's body sits atop the frame — this one showing off the impeccably crafted components of an alloy suspension system that has as its points of reference both Indy car (inboard-mounted front shocks) and exotic car (automatic rear transaxle, like a Ferrari 456 GTA).

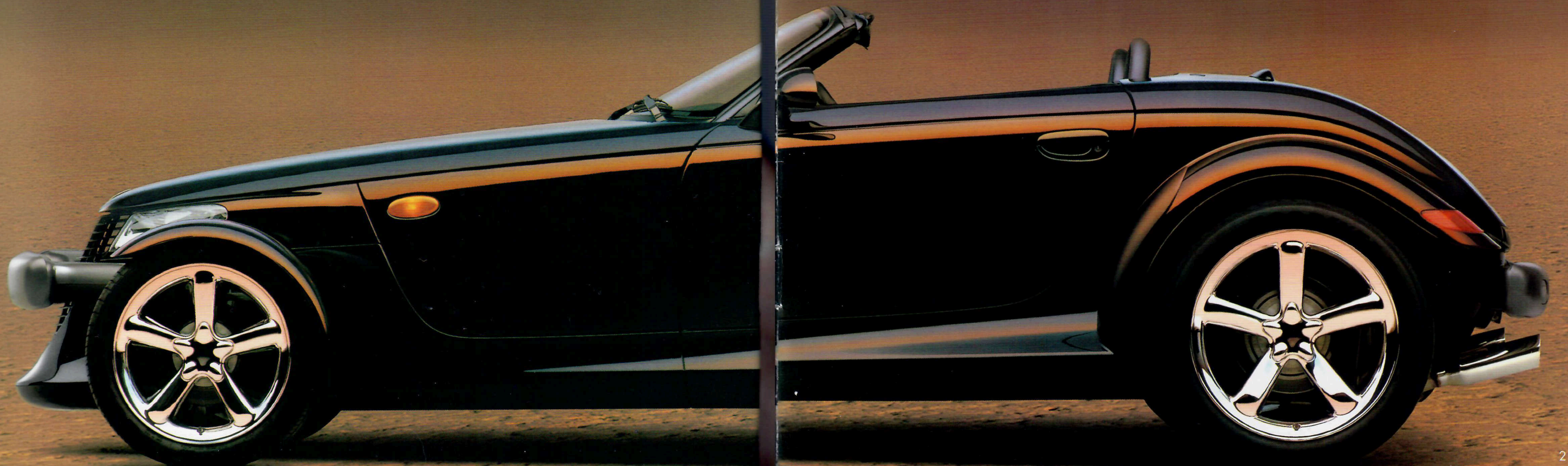
Here is searing heat on blinding white salt flats, slicks-smokin' quarter-miles, and small-town Saturday night cruises. Turns out only Plymouth could summon the swagger to build a two-seat suntanner with scoot that snaps off a salute to hot rodding. Prowler features an AutoStick® transaxle shifter, fully independent suspension, an aluminum 3.5-liter SOHC V6

generating 253 horsepower to blur the scenery out on Route 66 and optional chrome wheels. A rolling celebration of new materials, Prowler is concocted from a heady brew of aluminum alloys, sheet-molding compound, reaction-injected molded urethane, and a polymer in its sensually retro grille called "acrylonite butadiene styrene."



Prowler Purple Prowler Yellow (extra cost) Prowler Black (extra cost) Prowler Red (extra cost)

See your dealer for information on color availability.



Prowler in Black with new optional chrome wheels



A.



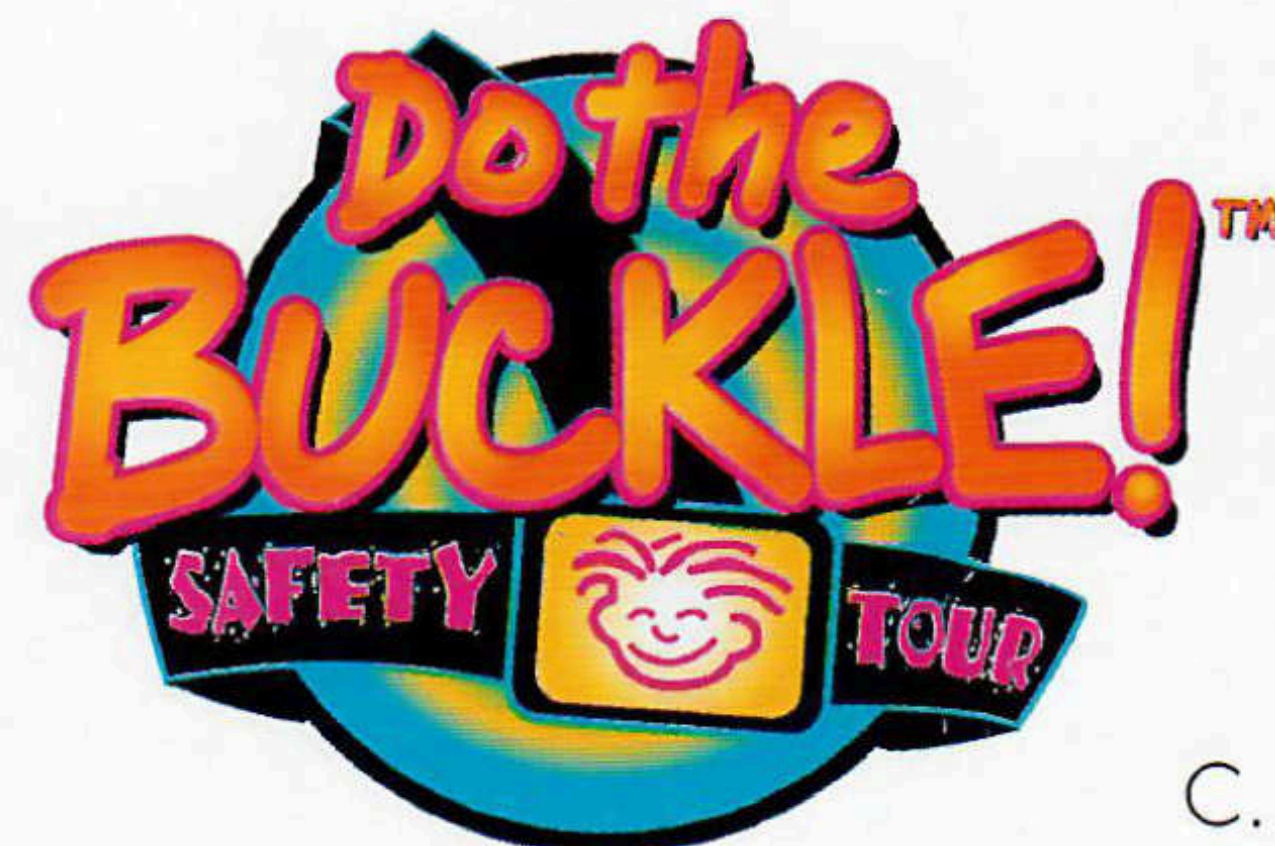
B.

Innovative safety features are designed into every Plymouth from the very beginning. That's why Plymouth is proud that its 1999 passenger cars meet all federal passenger car safety standards. And all Plymouth vehicles meet current federal side-impact protection requirements.* Next Generation driver and front-passenger air bags† (A), used in conjunction with Plymouth's Unibelt restraints, are one of the best safety systems available today. Available Integrated Child Seats‡ (B) are the most convenient method for safely and comfortably transporting young passengers. Child-protection rear or sliding door locks provide additional safety. And DaimlerChrysler Corporation endorses Do The Buckle!™ (C), a national consumer safety campaign designed to educate children — as well as all people who drive or ride in vehicles — on the importance of wearing seat belts.

* Your salesperson has a complete listing of safety features for the Plymouth of your choice.

† Certified to the Federal Regulations that allow less forceful air bags. Always use seat belts. Remember a backseat is the safest place for children. Rearward-facing child seats can be used in Prowler only with passenger air bag turned off.

‡ For children at least one year old, weighing between 22 and 50 pounds and no more than 47 inches in height.



C.

Plymouth accessories from Mopar. Every Mopar product is designed for exceptional quality and fit, and is intended to integrate perfectly with your new 1999 Plymouth vehicle. To express your personal style and taste, there's no better way than with Mopar. A perfect example: Mopar Multipurpose Roof Rack (left) holds up to 100 pounds and can be used with Mopar's Fork-Mount or Upright-Style Bike Carriers. No matter which Plymouth vehicle you choose, there are all kinds of options with available Plymouth accessories from Mopar. See your Plymouth dealer for a complete listing of available items.



CUSTOMER ONE CARE™

At DaimlerChrysler Corporation, our commitment to complete customer satisfaction is evident in every car and minivan we sell. Long after a vehicle is driven away from the showroom, we will be there to ensure that our customers remain pleased with every new-vehicle purchase. To prove this commitment, all Chrysler and Plymouth vehicles are covered by the 3/36 Customer One Care Plan,* which includes a 3-year/36,000-mile (whichever comes first) Bumper-to-Bumper Limited Warranty† and Roadside Assistance‡ for 3 years or 36,000 miles. Roadside Assistance provides 24-hour, 7-day-a-week Emergency Road Service, contacted by a nationwide toll-free number. A 5-year or 100,000-mile Outer-Panel Rust-Through Limited Warranty covers the cost of all parts and labor needed to repair exterior sheet metal panels if perforated by corrosion. The 3/36 Customer One Care Plan stays with the vehicle, transferring automatically to subsequent owners at no cost during the warranty period.

* See your dealer for additional details and a copy of this limited warranty.

† Covers the complete vehicle against defects in materials and workmanship. Excludes wiper blades, clutch and brake linings, brake rotors and drums, normal maintenance items and tires (covered by their own manufacturer's warranty).

‡ Roadside Assistance services are provided by Cross Country Motor Club, Inc. (In California, Cross Country Motor Club of California, Inc.)

LEASING

Leasing is a popular way to finance a new vehicle, and Chrysler Financial's **Gold Key Lease** has the flexibility to fit your vehicle choice and your lifestyle. Lease payments are typically lower and for a shorter term than conventional financing. At lease end, you can: **1)** turn the vehicle in and lease a new one; **2)** buy the vehicle and keep it; **3)** buy the vehicle and sell it for a possible profit. If the idea of driving the vehicle you want and paying less for it sounds great, ask about Gold Key Lease. **Gold Key Plus** is a great alternative to leasing for customers who want low payments and pride of vehicle ownership — Gold Key Plus offers both. Decide how long the vehicle will be driven and the trade-in value is guaranteed (less excess mileage and wear and tear). Ask your dealer for complete details. **Commercial Finance Options (CFO)** offers several finance and lease options to small and midsize businesses, municipalities and small fleet operators. A full range of automotive financing is available through Chrysler Financial, providing flexible payment plans and finance products for qualified buyers. Many of these plans can be customized to fit your particular budget and make your new vehicle even more affordable. The **College Graduate Program** is especially attractive to those just beginning their careers. Ask your salesperson for details about any of the above plans. Chrysler Financial's programs are subject to availability and state and local laws.

CHRYSLER SERVICE CONTRACTS

Additional protection for Plymouth owners is available through optional Chrysler Service Contracts. These service plans are available in a variety of time and mileage combinations to meet your driving needs. Ask your dealer for more information or call 1-800-442-2666.

All product illustrations, specifications and competitive comparisons are based upon current information at the time of publication approval. Although descriptions are believed to be correct, complete accuracy cannot be guaranteed. DaimlerChrysler Corporation reserves the right to make changes at any time, without notice or obligation, in prices, specifications, equipment, colors and materials, and to change or discontinue models. Some of the equipment shown or described throughout this catalog is available at extra cost. See your dealer for the latest information.

Chrysler, Plymouth, Neon, Breeze, Voyager, Prowler, Expresso, Mopar, Customer One Care, Easy Out Roller Seats, EVS II and Comfort-Fit Seat Belt System are registered trademarks of DaimlerChrysler.

Always use seat belts. Remember a backseat is the safest place for children.

FOR MORE INFORMATION ON PRODUCTS OR LEASING:
1-800-PLYMOUTH
www.plymouthcars.com

Plymouth



For more information on products or leasing:
1-800-PLYMOUTH or www.plymouthcars.com



DEZO'S GARAGE