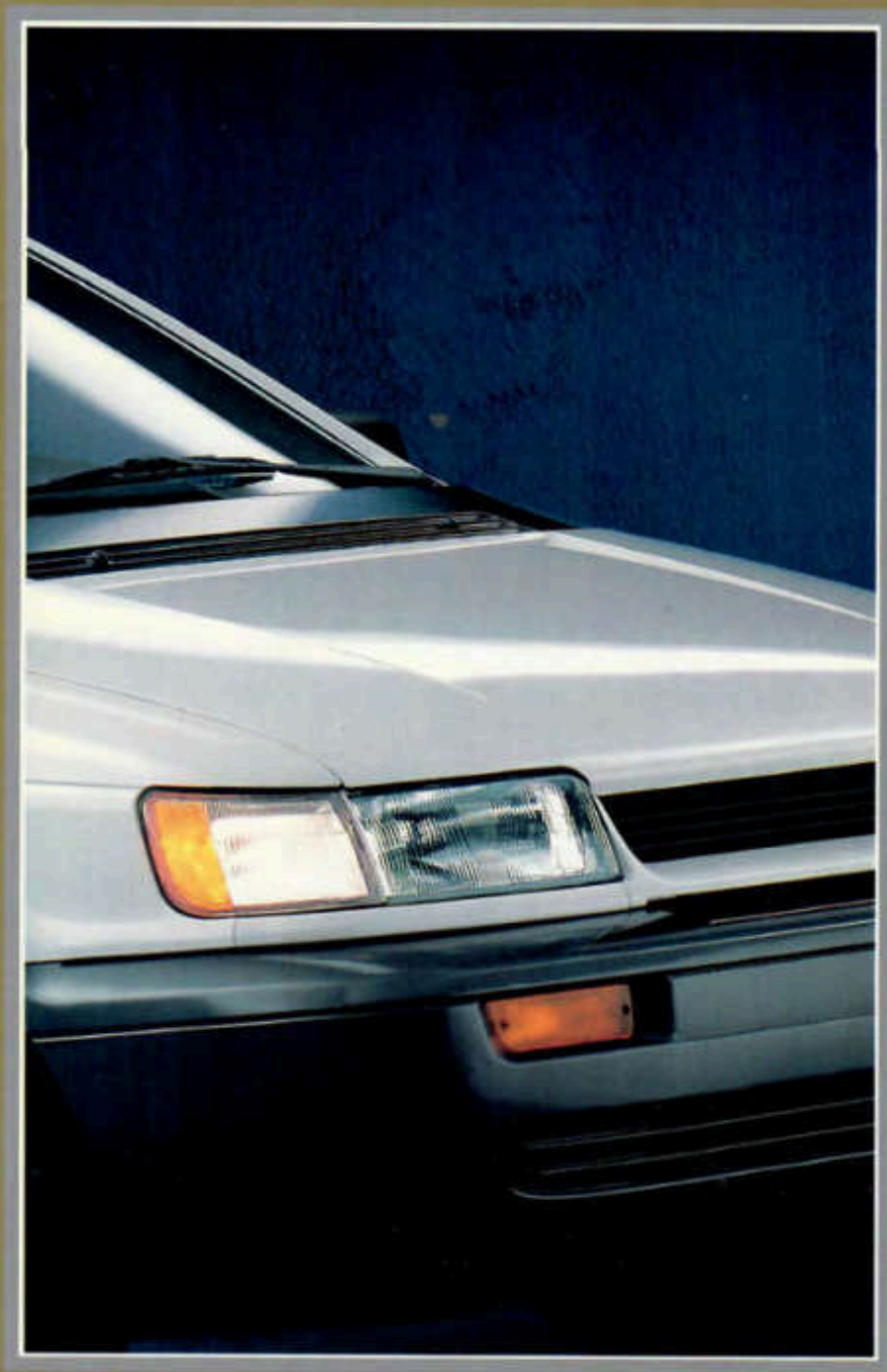


PLYMOUTH



COLT VISTA
& COLT

PATTERSON - CHRYSLER - PLYMOUTH
JEEP - EAGLE
1965 N. Ellsworth Ave.
Salem, Ohio 44460
216-337-3475

THE PLYMOUTH ADVANTAGE: 1992 COLT VISTA, THE ALL-NEW MIDSIZE IMPORT FRONT-WHEEL-DRIVE WAGON. VISTA OFFERS YOU A GREAT COMBINATION...PASSENGER-CAR RIDE AND HANDLING WITH SPACIOUS SEATING AND CARGO FLEXIBILITY, PLUS THE EASE-OF-ENTRY OF A SLIDING SIDE DOOR, NOT OFFERED ON SUBCOMPACT WAGONS. VERSATILE VISTA COMES IN TWO FRONT-WHEEL-DRIVE MODELS AND AN ALL-WHEEL-DRIVE MODEL. THE ALL-NEW MID-SIZE COLT VISTA WAGON. IT'S YOUR FAMILY'S SMART, AFFORDABLE CHOICE.



Colt Vista

ANOTHER PLYMOUTH ADVANTAGE: FUN-TO-DRIVE CARS WITH IMPORT ENGINEERING AND A LOW PRICE TAG.



Colt

COLT AND COLT GL ARE STYLISHLY AERODYNAMIC HATCHBACKS THAT PROVIDE COMFORTABLE SEATING FOR FIVE, PLUS AMPLE STORAGE FOR YOUR GEAR. FRONT-WHEEL-DRIVE STABILITY AND A WIDE, ROAD-HOLDING STANCE COMBINE TO OFFER A REAL HANDLING ADVANTAGE. COLT AND COLT VISTA PROVIDE NUMEROUS SAFETY ENGINEERING FEATURES FOR DRIVER AND PASSENGER PROTECTION (SEE PAGE 3). PLYMOUTH COLT. IT'S ALL THE DRIVING FUN, VERSATILITY AND VALUE YOU'RE SEEKING.

ADVANTAGE: SAFETY



Active rear outboard lap and shoulder belt.

Front motorized seats.

Vista's child-protection sliding door lock.

Vista's all-wheel-drive technology.

Vista's optional antilock disc brakes.

Energy-absorbing bumpers.



Split-back rear bench seat accommodates long cargo. Standard on Vista SE, available on Vista AWD.



Electronic four-speed automatic transaxle offers smooth, quiet, economical operation. Optional on all Vista models.



Advanced 1.8-liter 16-valve single overhead cam (SOHC) multipoint fuel injected (MPI) engine is standard.



THE ALL-NEW COLT VISTAS ARE PRACTICAL AND FUN TO DRIVE. THE AWD MODEL'S SOPHISTICATED, FULL-TIME ALL-WHEEL-DRIVE SYSTEM DELIVERS ROAD-GRIPPING, GO-ANYWHERE PERFORMANCE. A POWERFUL 2.4-LITER MPI ENGINE IS AVAILABLE FOR EXTRA TORQUE. FOUR-WHEEL INDEPENDENT SUSPENSION WITH A REAR STABILIZER BAR GIVES A COMFORTABLE, CONTROLLED RIDE. STANDARD FEATURES INCLUDE POWER-ASSISTED STEERING AND BRAKES, FULL STAINLESS STEEL EXHAUST SYSTEM, AND MUCH MORE.

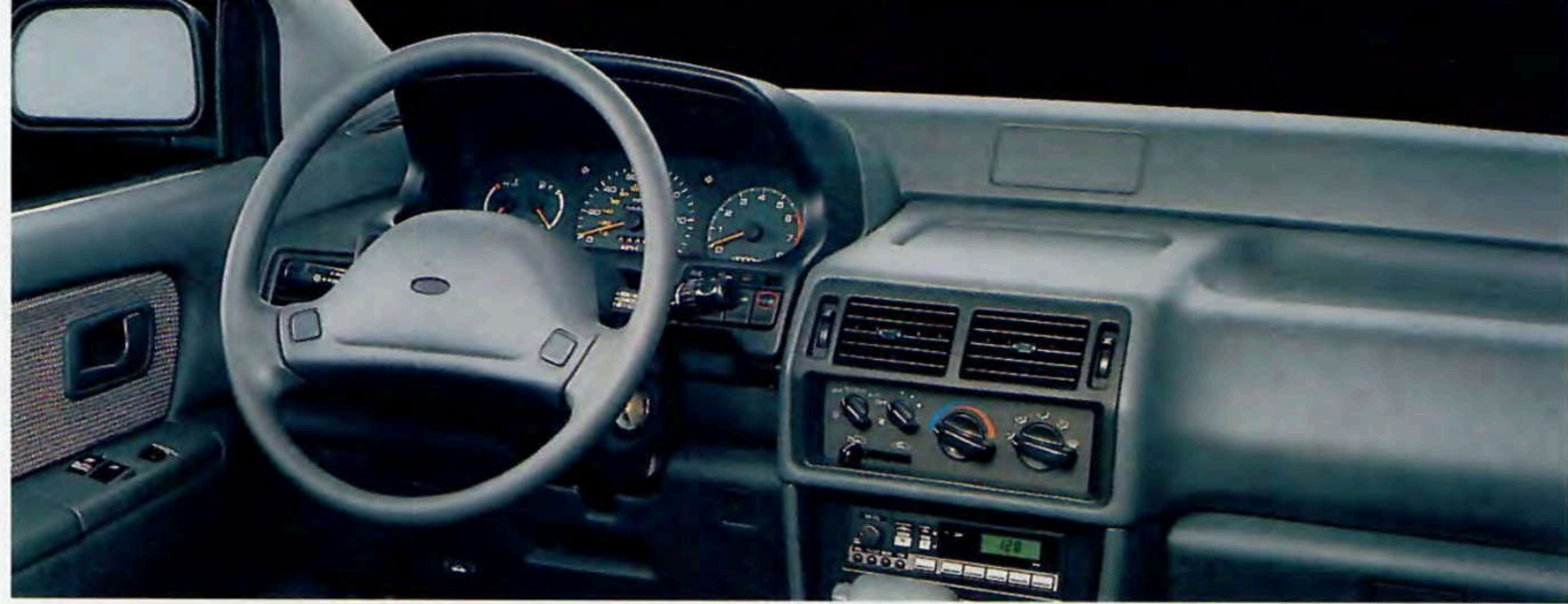
IMPORT TECHNOLOGY: VISTA



Some of the equipment shown or described throughout this catalog is available at extra cost.

About this catalog. Since the time of printing, some of the information you'll find in this catalog may have been updated. Ask your dealer for details.

Colt Vista AWD, shown in Bright White.

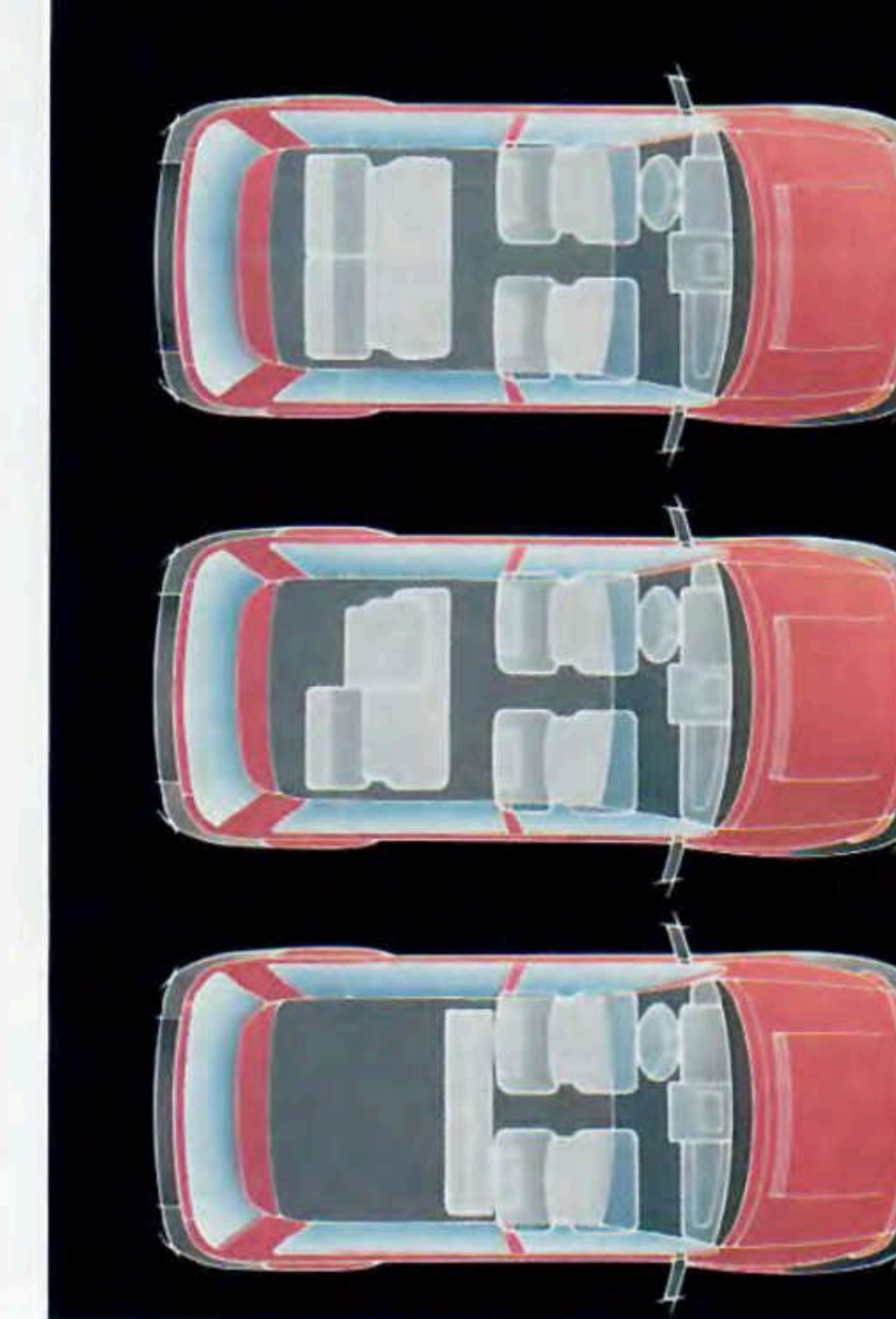


Vista SE's softly sculpted instrument panel includes quick-reading analog gauges, warning/indicator lights, a standard trip odometer, and a tilt steering column. Glove box, dual cup holders, and tinted window glass are also standard.



Standard sliding rear door facilitates passenger entry and exit. Not offered on 1992 Ford Escort wagons.

VISTA SE'S INTERIOR IS ROOMY AND VERSATILE. A FLAT FLOOR AND A HIGH ROOF CREATE 131.1 CUBIC FEET OF SPACE FOR COMFORTABLE FIVE-PASSENGER SEATING. AND WHEN YOU NEED IT, THERE IS 79.0 CUBIC FEET OF CARGO CAPACITY WITH THE REAR SEAT REMOVED — MORE THAN THE 1992 HONDA ACCORD WAGON. ADVANTAGE: PLYMOUTH. ENJOY THE COMFORT OF STANDARD FULL-FACED CLOTH WITH VINYL TRIM RECLINING LOW-BACK BUCKET SEATS AND A SPLIT-BACK REAR BENCH SEAT.



1. Five-passenger seating provides family-size comfort with excellent visibility.

2. Convert space like magic. Vista SE's standard split rear seatback easily folds down to accommodate cargo.

3. Flip a single handle, and the whole rear seat tumbles forward to create 67.8 cubic feet of storage space. Remove the rear seat for maximum cargo room.

FAMILY FLEXIBILITY



Colt Vista SE interior, shown in Light Gray/Blue.



Colt GL's distinctive wraparound instrument panel offers maximum driver control and convenience. A trip odometer, sunglasses storage compartment, and center console with storage bin are standard. An AM/FM stereo radio is optional on Colt and Colt GL.



Versatile Colt hatchback opens up 34.7 cubic feet of cargo space with split rear seatbacks folded down.

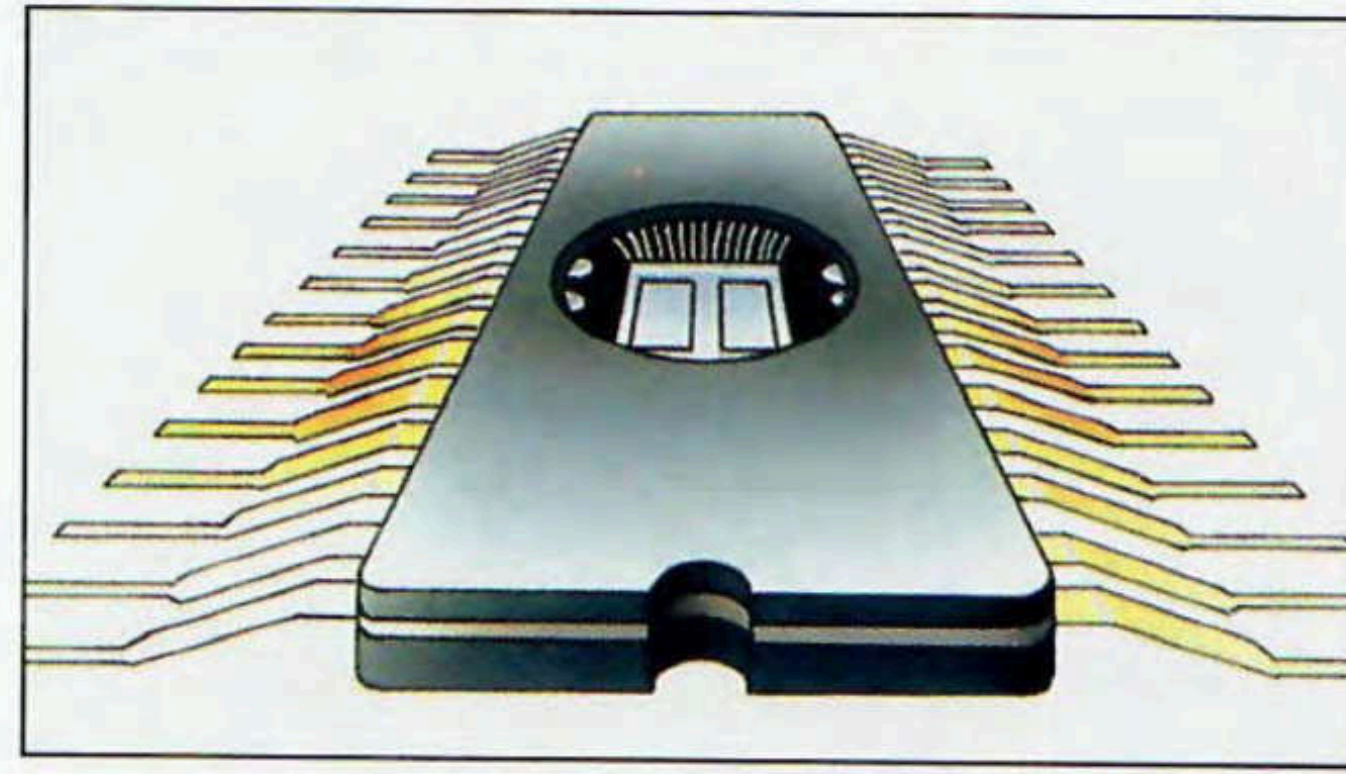


THE 1992 PLYMOUTH COLTS GIVE YOU SMOOTH AEROSTYLING, PLUS INTERIOR SATISFACTION. ENJOY THE SUPPORTIVE COMFORT OF COLT GL'S FULL-FACE CLOTH LOW-BACK RECLINING FRONT BUCKET SEATS (SHOWN RIGHT). STANDARD SPLIT FOLD-DOWN REAR SEATBACKS ACCOMMODATE LONG CARGO. COLT GL STANDARD FEATURES ALSO INCLUDE CLOTH INSERT DOOR TRIM PANELS AND A REAR SECURITY PANEL. (CLOTH SEATS OPTIONAL ON COLT. SEE CUSTOMER-PREFERREDSM PACKAGES, PAGE 11.)

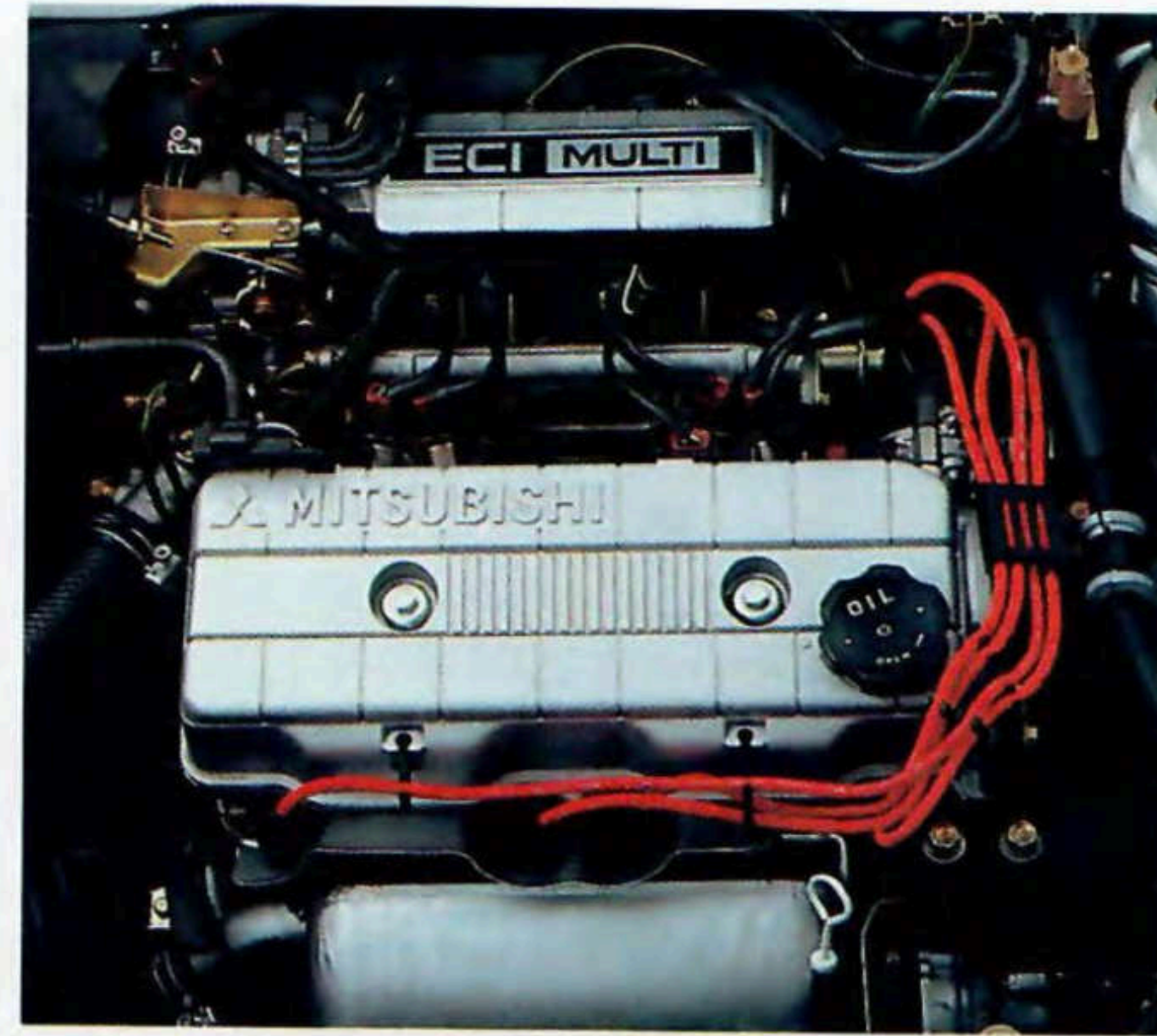
SMART DESIGN: COLT



Colt GL, shown in Vivid Red.



On-board diagnostic system, standard, lets Plymouth dealer service technicians electronically interface with the vehicle's on-board engine and body computers. They can then quickly and accurately service your vehicle and maintain it in peak operating condition.



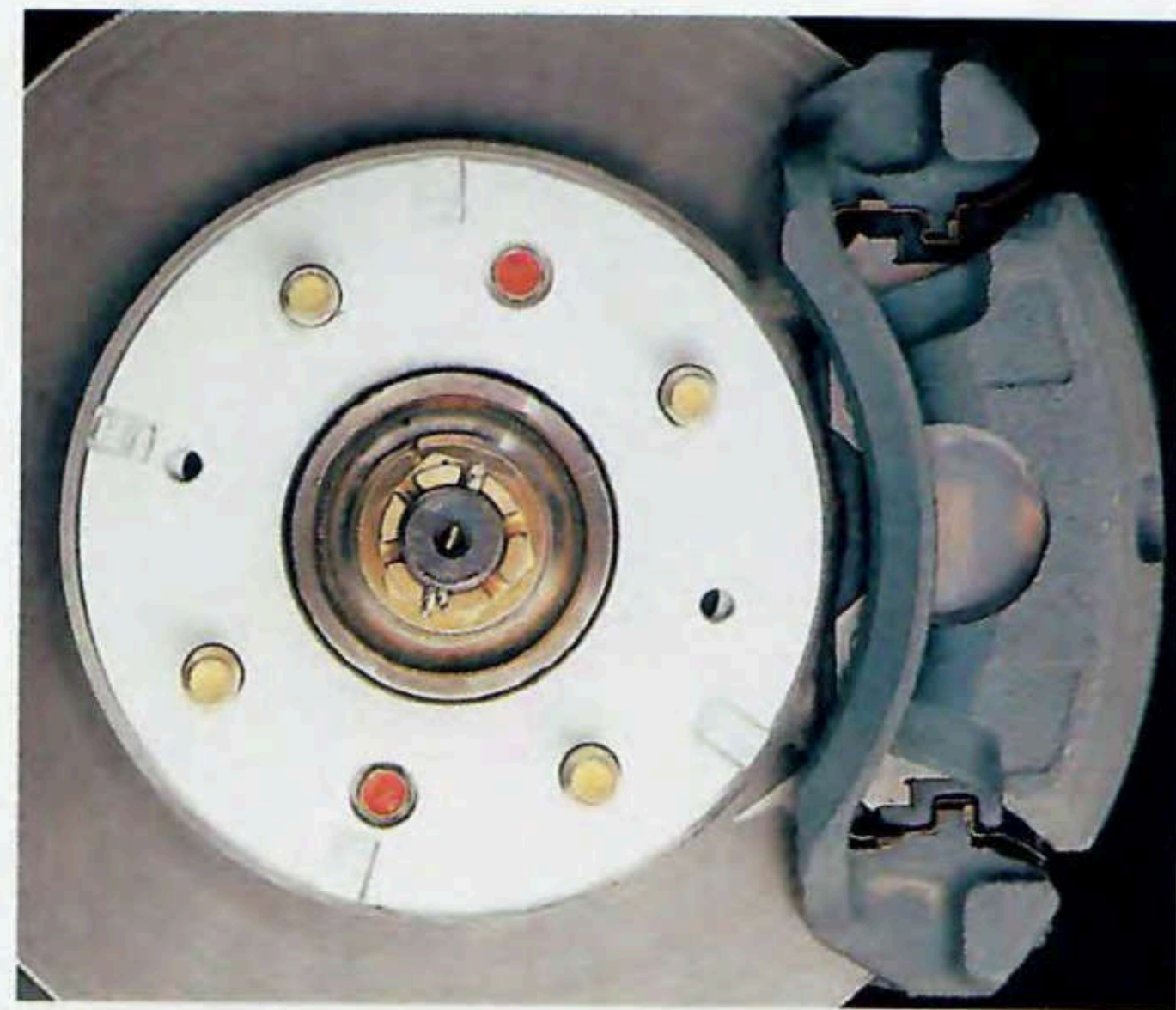
Vista's 2.4-liter SOHC EFI engine is lively and efficient. It has dual balance shafts for smooth, quiet operation, and delivers 136 lb-ft of torque at 3,500 rpm. Optional on all Vista models with either a five-speed manual overdrive transaxle or a four-speed automatic transaxle.



Three-speed automatic transaxle includes an electronic lockup torque converter for economical operation, plus a shift-lock feature for added safety. (Optional on Colt only.)

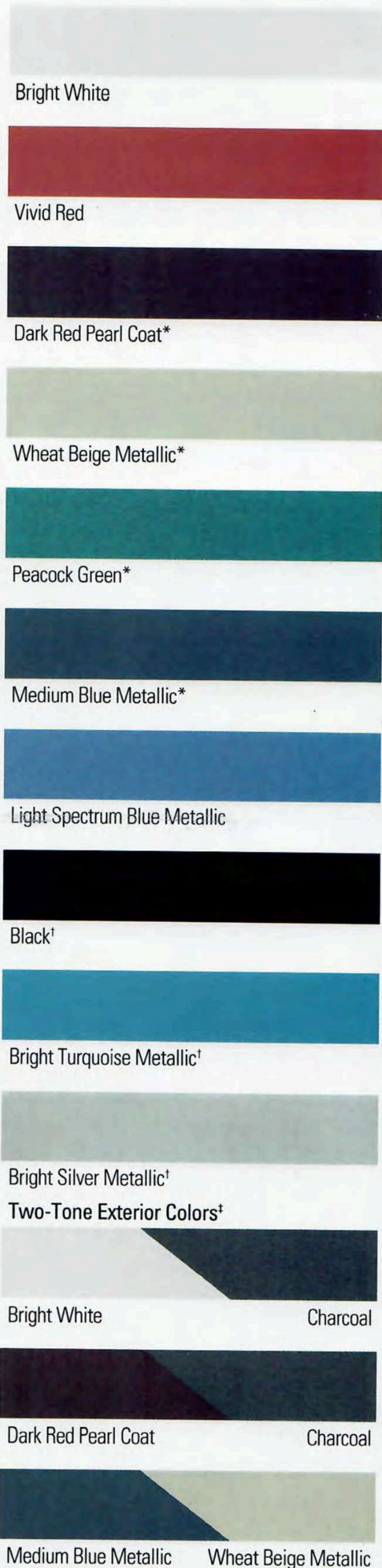


Vista's full-time all-wheel drive features on-demand traction sensing that shifts torque to the axle that has the most traction. The AWD system utilizes a center differential with viscous coupling to deliver torque to all four wheels. The result is excellent handling and directional stability.



Antilock braking system (ABS) increases steering control and vehicle stability during hard braking. Includes fade-resistant vented front and rear disc brakes. In this advanced, electronically controlled system, wheel rotation sensors trigger automatic brake "pumping," to detect and prevent wheel lockup. ABS is available on all Vista models.

Standard full stainless steel exhaust system (not shown) withstands corrosion-resistance testing. Components from the catalytic converter rearward are made from a stainless steel alloy that extends system life.



*Colt Vista only. †Colt three-door only. ‡Colt Vista only.

NOTE: Due to printing limitations, the colors shown will vary slightly from actual hues. See your Plymouth dealer for accurate color chips.

	FWD	AWD
Head Room—Front (inches)	40.0	40.0
—Rear (inches)	38.6	38.6
Leg Room—Front (inches)	40.8	40.8
—Rear (inches)	36.1	36.1
Hip Room—Front (inches)	50.2	50.2
—Rear (inches)	52.6	52.6
Shoulder Room—Front (inches)	55.1	55.1
—Rear (inches)	55.1	55.1
Cargo Capacity (cubic feet)		
—Behind rear seat	34.6	34.6
—Rear seat tumbled	67.8	67.8
—Rear seat removed	79.0	79.0
Wheelbase (inches)	99.2	99.2
Overall Length (inches)	168.5	168.5
Overall Width (inches)	66.7	66.7
Overall Height (inches)	64.4	65.0
Track—Front/Rear (inches)	57.5/57.5	57.3/57.5
Turning Diameter (feet)	33.5	33.5
Curb Weight (pounds)	2,700/2,744 (SE)	2,955
Fuel Tank Capacity (gallons)	14.5	14.5

POWER TRAINS

	FWD	AWD	EPA EST. MPG CITY/HWY
1.8-LITER ENGINE—113 hp @ 6,000 rpm; torque 116 lb-ft @ 4,500 rpm.	S	S	FWD AWD
5-Speed Manual with Overdrive Transaxle	S	S	23/29 22/26
4-Speed Automatic Transaxle	O	O	23/28 21/25
2.4-LITER ENGINE—116 hp @ 5,000 rpm; torque 136 lb-ft @ 3,500 rpm.	O	O	
5-Speed Manual with Overdrive Transaxle	O	O	21/27 19/24
4-Speed Automatic Transaxle	O	O	20/25 19/23

CUSTOMER-PREFERREDSM PACKAGES

ENGINES	TRANSMISSIONS	COLT VISTA				COLT VISTA SE				COLT VISTA AWD			
1.8L	Five-Speed Manual	A	B	C	D	H	K	P	R	S			
1.8L	Four-Speed Automatic	A	B	C	D	H	K			S			
2.4L	Five-Speed Manual					D	H	K		S	T	W	
2.4L	Four-Speed Automatic					D	H	K		S	T	W	

All the above letter designations represent package group codes.

PACKAGE CONTENTS

PACKAGE CONTENTS	VISTA	VISTA SE	VISTA AWD
Air Conditioning ¹		•	•
Cargo Security Cover		•	•
Cruise Control		•	•
Custom Package ²		•	•
Defroster ³ —Rear	•	•	•
Gauge Package ²			•
Glass—Tinted	•	•	•
Mats—Floor	•	•	•
Mirrors—Dual electric	•	•	•
Radio—AM/FM 4-speaker	•	•	•
Radio—AM/FM 4-speaker cassette	•	•	•
Roof Rack	•	•	•
Power Liftgate Lock/Unlock		•	•
Power Windows and Door Locks		•	•
Stabilizer Bar—Rear	•	•	•
Wiper/Washer—Rear	•	•	•

AVAILABLE OPTIONS

AVAILABLE OPTIONS	VISTA	VISTA SE	VISTA AWD
Air Conditioning ¹	O	O	O
ABS with Four-Wheel Disc Brakes		O	O
Mats—Floor		O	P
Radio—AM/FM 4-speaker	O	O	P
Radio—AM/FM 4-speaker cassette		O	P
Roof Rack		O	P
Paint—Two-tone		O	O

•=Included in Package S=Standard O=Optional. Available only when corresponding Customer-PreferredSM Package is ordered. P=Included in Customer-PreferredSM Package listed above.
¹There are special engine cooling requirements for field-installed air conditioning. Failure to follow these requirements may invalidate warranty. See your dealer for details.
²See dealer for package content.
³Required on all passenger vehicles registered in New York State.

FUNCTIONAL

	VISTA	VISTA SE	VISTA AWD
Battery—12-volt, maintenance-free	S	S	S
Brakes—Antilock with four-wheel disc brakes	O	O	O
Brakes—Power-assisted: front disc, self-adjusting rear drum	S	S	S
Diagnostic System—On-board	S	S	S
Engine—1.8-liter MPI, 16-valve	S	S	S
Engine—2.4-liter MPI, 8-valve	O	O	O
Exhaust System—Stainless steel	S	S	S
Steering—Power-assisted, rack-and-pinion	S	S	S
Suspension—Front: independent MacPherson-type struts with coil springs and stabilizer bar	S	S	S
Suspension—Rear: coil springs with semi-trailing arm	S	S	S
Suspension—Rear: stabilizer bar	P	S	S
Transaxle—Five-speed overdrive manual	S	S	S
Transaxle—Four-speed automatic	O	O	O

EXTERIOR

	VISTA	VISTA SE	VISTA AWD
Bumper—Energy-absorbing, front and rear: color-keyed	NA	S	NA
Bumper—Energy-absorbing front and rear: gray	S	NA	NA
Door, Sliding—Rear right side with flip out window, recessed door handle, inside lock	S	S	S
Glass—Tinted	P	S	P
Headlights—Halogen: aerostyle with replaceable bulbs	S	S	S
Liftgate—With fixed glass and dual gas-assist props	S	S	S
Mirrors—Outside, dual manual	S	NA	NA
Mirrors—Outside, dual electric	P	S	S
Molding—Bodyside: gray	S	S	S
Mudguards—Front	NA	NA	S
Mudguards—Rear	NA	NA	S
Paint—Two-tone	NA	O	O
Roof Rack—Adjustable	O	O	O
Tires—P185/75R14 all-season black sidewall (set of four) ¹	S	NA	NA
Tires—P205/70R14 all-season black sidewall (set of four) ¹	NA	S	S
Wheels—14-inch argent sport styled steel with black center caps (set of four)	S	NA	NA
Wheels—14-inch black stamped steel with full wheel covers (set of four)	NA	S	S
Windshield Wiper—Intermittent, variable wipe feature	S	S	S
Wiper/Washer, Liftgate Window—With fixed intermittent wipe feature	P	S	S

INTERIOR

	VISTA	VISTA SE	VISTA AWD
Air Conditioning ² —Manual	O	O	O
Armrest—Front center	NA	S	P ³
Ash Receiver—Front and rear	S	S	S
Assist Handles—Roof (three)	S	S	S
Cargo Security Cover	NA	P	P
Carpeting—Cut pile	S	S	S
Child Restraint Anchorages—Three	S	S	S
Cigarette Lighter	S	S	S
Clock—Electronic digital, integral with radio	O	P	O
Console—Floor-mounted shift lever with storage bin and coin holder	S	S	S
Cruise Control—Automatic	P	P	P
Defroster ³ —Rear window: electric	P	P	P
Door Locks—Child-protection: rear sliding door	S	S	S
Door Locks—Power	NA	P	P
Floor Mats—Front and rear	O	P	O
Fuel Filler Door—Remote release	S	S	S
Headliner—Molded, cloth	S	S	S
Hood Release—Inside	S	S	S
Horn—Single-note	S	NA	S
Horn—Dual-note	NA	S	P ³
Instrument Panel—Speedometer, odometer, trip odometer with analog fuel level and engine temperature gauges and warning indicator lights	S	S	S
Jack—Scissors-type	S	S	S
Liftgate Release—Power lock/unlock	P	S	P
Lights—Dome and cargo area, fasten seat belts, hazard warning system, parking brake, door/tailgate ajar, coolant level, brake fluid level	S	S	S
Mirror—Inside, day/night	S	S	S
Radio—AM/FM stereo: electronically tuned, four speakers	O	P	O
Radio—AM/FM stereo w/cassette tape player: electronically tuned	O	O	O
Rear Heat Ducts	NA	S	S
Seat Belts—Automatic passive restraints for front seats; active lap and shoulder belts for outboard rear passengers	S	S	S
Seats—Front: reclining full-faced cloth with vinyl trim bucket seats	S	S	S
Seats—Rear: full-faced cloth with vinyl trim bench with fold-back and tumble feature; removable	S	NA	S
Seats—Rear: full-faced cloth with vinyl trim split-back reclining bench with fold-back and tumble feature; removable	NA	S	P ³
Steering Column—Tilt	NA	S	S
Steering Wheel—Sport, two-spoke	S	S	S
Storage Bin—Rear: left trim panel	NA	S	P ³
Sun Visors—Ticket holder and covered vanity mirror on driver-side	S	S	S
Sun Visors—Dual covered vanity mirrors	NA	S	S
Windows—Power with driver-side auto down feature	NA	P	P

S=Standard. O=Optional. Some items may also be available in Customer-PreferredSM Packages. See Customer-PreferredSM Packages and "Available Options" for availability. P=Package only. See Customer-PreferredSM Packages for availability. NA=Not available. ¹Includes compact limited service spare tire. ²There are special engine cooling requirements for field-installed air conditioning. Failure to follow these requirements may invalidate warranty. See your dealer for details. ³Included in Custom Package. ⁴Required on all passenger vehicles registered in New York State.

COLT DIMENSIONS*

	COLT	COLT GL
Head Room—Front (inches)	38.3	36.9
—Rear (inches)	41.9	32.5
Leg Room—Front (inches)	52.8	42.5
—Rear (inches)	53.5	52.1
Shoulder Room—Front (inches)	53.5	52.1
—Rear (inches)	53.5	52.1
Cargo Capacity (cubic feet)—Rear seatback raised	11.5	34.7
—Rear seatback lowered	13.2	34.7
Fuel Tank (gallons)	13.2	13.2
Wheelbase (inches)	93.9	93.9
Overall Length (inches)	158.7	158.7
Overall Width (inches)	65.7	65.7
Overall Height (inches)	51.9	51.9
Track—Front/Rear (inches)	56.3/56.3	56.3/56.3
Turning Diameter (feet)	30.2	30.2
Estimated Curb Weight (base model) (lbs)	2,705	2,705

*Based on 1991 NHTSA information

POWER TRAINS

	COLT	COLT GL	EPA EST. MPG CITY/HWY ¹
1.5-LITER MPI 4-CYL. ENGINE— 92 hp @ 6,000 rpm; torque 93 lb-ft @ 3,000 rpm.	S	S	
Four-speed manual	S	NA	31/36
Five-speed manual	NA	S	29/35
Three-speed automatic	O	O	28/31

¹Based on 1991 EPA estimates.

CUSTOMER-PREFERREDSM PACKAGES

ENGINES	TRANSAXLES	COLT 3-DOOR							
		BASE				GL			
1.5-Liter MPI	Four-speed manual	A	B	C	D				
	Three-speed automatic	A	B	C	D				
1.5-Liter MPI	Five-speed manual					G	H	K	
	Three-speed automatic					G	H	K	

PACKAGE CONTENTS

Defroster—Rear window			*	*	*	*	*	*	*
Digital Clock									*
Glass—Tinted			*	*	*	*	*	*	*
Radio—AM/FM stereo			*	*	*	*	*	*	*
Rear Shelf Panel							S	S	S
Seats—Full-faced cloth							S	S	S
Steering—Power-assisted							*	*	*
Windshield Wipers—Fixed intermittent							*	*	*
Wiper/Washer—Rear window							*	*	*

AVAILABLE OPTIONS

Air Conditioning ²	O	O	O	O	O	O	O	O	O
Radio—AM/FM stereo	O	O	P	P	P	P	P	P	P

*Included in package. S—Standard. O—Optional. Available only when corresponding Customer PreferredSM Package is ordered. P—Included in Customer PreferredSM Package listed above.

¹Required on all passenger vehicles registered in New York State.

²There are special engine cooling requirements for field-installed air conditioning. Failure to follow these requirements may invalidate warranty. See your dealer for details.

COLOR COMBINATIONS

EXTERIOR COLOR	COLT	COLT GL	INTERIOR COLORS
Bright White	*		Gray
Bright White		*	Dark Red
Vivid Red	*	*	Gray
Black	*		Gray
Light Spectrum Blue	*		Gray
Light Spectrum Blue		*	Dark Blue
Bright Turquoise	*	*	Gray
Bright Silver	*		Gray

STANDARD AND OPTIONAL EQUIPMENT

FUNCTIONAL

	COLT	COLT GL
Alternator—75-ampere	S	S
Battery—12-volt, maintenance-free	S	S
Brakes—Power-assisted, front disc, self-adjusting rear drum with dual proportioning valve	S	S
Clutch—Single, dry plate, hydraulic actuator	S	S
Engine—1.5-liter SOHC four-cylinder MPI, three valves	S	S
Exhaust System—Stainless steel	S	S
Front-Wheel Drive	S	S
Fuel Injection—Electronic, multipoint	S	S
On-Board Diagnostic System	S	S

STANDARD AND OPTIONAL EQUIPMENT

FUNCTIONAL (Cont'd)

	COLT	COLT GL
Stabilizer Bar—Front	S	S
Steering—Manual, rack-and-pinion	S	S
Steering—Power-assisted	NA	P
Suspension—Front: independent MacPherson-type struts and coil springs	S	S
Suspension—Rear: three-link trailing arm and coil springs	S	S
Transaxle—Four-speed manual	S	NA
Transaxle—Five-speed overdrive manual	NA	S
Transaxle—Three-speed automatic	O	O

EXTERIOR

Bumper—Energy-absorbing, front and rear	S	S
Fascia—Gray	S	NA
Fascia—Color-keyed with red accent stripe, front and rear	NA	S
Fuel Filler Door—Locking with tethered cap	S	S
Glass—Tinted, all windows	P	P
Headlights—Halogen, aerostyle with replaceable bulbs	S	S
Mirror—Aerostyle, left, manual, black	S	NA
Mirrors—Aerostyle, dual, manual remote, black	NA	S
Moldings—Body-side, color-keyed with accent stripe	NA	S
Stoplight—Center high-mounted	S	S
Tires—P155/80R13 steel-belted radial black sidewall (set of four) ¹	S	NA
Tires—P175/70R13 steel-belted radial black sidewall (set of four) ¹	NA	S
Wheels—13-inch argent, styled-steel with black center cap (set of four)	S	NA
Wheels—13-inch wheel cover, "Fabric" design (set of four)	NA	S
Window Wiper—Two-speed, windshield	S	S
Window Wiper—Intermittent, fixed, windshield	NA	P
Window Wiper—Wiper washer, rear window	NA	P

INTERIOR

Air Conditioning ³	O	O
Anchor—Child seat (three)	S	S
Carpetsing—In passenger and cargo compartments	S	S
Cellular Phone—Portable, dealer-installed	O	O
Cigarette Lighter	NA	S
Clock—Electronic digital	NA	P
Console—With storage bin and cup holder	S	S
Defroster—Rear window, electric ⁴	P	P
Demisters—Side windows	S	S
Hood Release—Inside	S	S
Lights—Dome, ashtray, plus warning lights for engine, low oil pressure, alternator, seat belt, low fuel, brake hydraulics, and door ajar	S	S
Light—Cargo area	NA	S
Mirror—Inside, day/night	S	S
Radio ⁵ —AM/FM stereo electronically tuned	O	P
Seat Belts—Front: automatic passive shoulder belt with lap belt; rear: three-point shoulder and lap belt for outboard passengers and lap belt for center passenger	S	S
Seatbacks, Split Folding Rear	S	S
Seats—Front: low-back full reclining buckets with headrest, vinyl trim	S	NA
Seats—Front: low-back full reclining buckets with headrest, cloth with vinyl trim	P	S
Shelf Panel—Rear	P	S
Steering Wheel—Deluxe	S	S
Storage—Door map pockets (two)	NA	S
Storage—Sunglasses box	S	S
Sun Visors—Padded	S	S
Trip Odometer	S	S

S—Standard. O—Optional. Some items may also be available in Customer PreferredSM Packages. See Customer PreferredSM Packages and "Available Options" for availability. P—Package only. See Customer PreferredSM Packages for availability. NA—Not available.

¹See dealer for optional group packages.

²Includes compact limited-service spare tire.

³There are special engine cooling requirements for field-installed air conditioning. Failure to follow these requirements may invalidate warranty. See your dealer for details.

⁴Required on all passenger vehicles registered in New York State.

⁵Radios must have Radio Accommodation Package.

Certain models, packages and options are subject to specific restrictions, requirements or late availability. See your dealer for the latest ordering information.

Chrysler Corporation Limited Warranty Protection Every Chrysler Corporation vehicle comes with the protection of a Chrysler Corporation Limited Warranty. See your dealer for details.

Chrysler Cellular Systems OKI[®] Telecom manufactures, services, and is the warrantor of the Portable phone products available on selected Chrysler Corporation vehicles. See your dealer for a copy of the limited warranties. Restrictions apply.

All product illustrations and specifications are based upon current information at the time of publication approval. Although descriptions are believed correct, accuracy cannot be guaranteed. Chrysler Corporation reserves the right to make changes from time to time, without notice or obligation, in prices, specifications, colors and materials, and to change or discontinue models. See your dealer for the latest information.



COAST-TO-COAST PLYMOUTH DEALER SERVICE AND SUPPORT
COLT VISTA AND COLT THREE-DOOR BUILT BY MITSUBISHI
PLYMOUTH CORPORATION SOLD AND SERVICED BY OVER 3,000
PLYMOUTH DEALERS

Buckle Up for Safety



OFFICIAL SPONSOR
1992 U.S. OLYMPIC TEAM