

1 9 9 0

PLYMOUTH VOYAGER





Voyager LE with woodgrain body side applique, shown in Quiet Red Pearl Coat

Plymouth Voyager... the benchmark

Plymouth Voyager is an American original and according to the latest J.D. Power and Associates survey,* Chrysler Motor's mini vans have the highest Customer Satisfaction Index Rating of any domestic mini van for the third consecutive year. And Motor Trend named Voyager the top mini van among its top ten new-car buys for 1988-89. Also, Voyager is a winner in resale value. A recent study indicates that a one-year-old Voyager LE retained over 88 percent of its original retail value.† Motor Trend designated Voyager as the top used mini van buy for 1984-88. You'll love Voyager's drivability and versatility, its car-like front-wheel drive traction and comfortable ride. For larger needs, choose an even roomier Grand Voyager. For

1990, there's a new, more powerful 3.3-liter V-6 engine, and other refinements, all backed by Plymouth's unequalled 7/70 protection plan. Nobody knows mini vans better than Plymouth. And the best keeps getting better.

*J.D. Power and Associates 1987-1989 Light Duty Truck CSI—customer satisfaction with product quality and dealer service on 1986-1989 models.
†Automotive News, CCC Information Services, April 1989.

Winner



1990 PLYMOUTH VOYAGER

*"...stepped up as the benchmark
in this class, and nothing's
come close since."*

MOTOR TRENDS



About the lighting: We have tried to make the lighting as accurate as possible. However, due to the time of evening, some of the highlights and shadows may have been captured differently than shown, and you should not turn for camera directions before working.

Some of the equipment shown is also sold throughout the country. It is available at your local

Voyager LE with the optional CD Direct Package, shown in Bright White Clear Coat. All-glass power windows in Black Clear Coat.

"...much of the ride and handling
feel of a conventional automobile..."

MOTOR TREND



Voyager LE, shown in Silver. Also available in Clear Coat, Charcoal, Deep, Dark, and Light Blue.

Plymouth Voyager LE... car-like personality

Meet Plymouth Voyager LE, the flagship of the Voyager line. It handles and parks as easily as a car, thanks to Voyager's front-wheel-drive maneuverability and compact, garageable design.

Nimble

Distinctive styling traits include the standard bodyside woodgrain appliques, 14-inch luxury wheel covers, and body-color front and rear fascias. Inside, your family enjoys new standard seven-passenger seating, luxury cloth trim seats, and more standard luxury features than ever before.

There's a standard 2.5-liter EFI (electronic fuel injected) engine. If you prefer turbocharged power,



Voyager LE's optional 2.5-liter Turbo SMPI (sequential multipoint fuel-injected) engine more than meets the challenge. Or for lively V-6 performance, choose the available 3.0-liter MPI V-6 engine.* The standard overhead console features map/reading lights, two storage compartments, and outside temperature and compass readouts.

*See page 22 for engine details.



Plymouth Voyager SE...
does it all superbly

Plymouth Voyager wrote the book on automotive versatility with its ability to be whatever your lifestyle demands...people mover, shopping companion, cargo carrier, or trailer hauler. Voyager SE's front-wheel-

drive design

Versatile provides a flat, low floor for generous leg room, and a shorter step-up that makes for easy entry and exit. From inside, Voyager's excellent visibility lets you enjoy a commanding view of the road. Need towing talent?

Voyager SE's optional 3.0-liter MPI V-6 engine has the muscle to tow your boat or trailer up to 2,500 pounds. For heavier loads, you can tow up to 3,350 pounds with the available Heavy-Duty Trailer Towing Preparation Package and Ultradrive, Plymouth's electronically controlled, fully adaptive



four-speed automatic overdrive transaxle. (See page 19 for full towing information.)



Voyager SE interior with high-back reclining front bucket seats, shown in Almond.

Plymouth Grand Voyager SE ...new 3.3-liter V-6 power

Enjoy a responsive new standard engine in Grand Voyager SE—our 3.3-liter MPI V-6 that delivers more power to cruise, to pass, and to pull. It's teamed with the smooth-shifting Ultradrive electronic four-speed overdrive



transaxle. (See page 18 for more information on Ultradrive, and page 22 for details on the new 3.3-liter MPI V-6.)

Refined

Inside Grand Voyager SE's tastefully appointed interior you're cradled in the comfort of high-back reclining bucket seats. The chair-high seating position is so relaxing you can drive many miles without tiring. (See page 14 for complete seating details.)



Exterior dual power remote control mirrors are one of many conveniences available in the Luxury Equipment Discount Package. The convenient overhead console features map/reading lights and storage compartments, for a garage door opener, and glasses. (See page 20 for package availability.)



Grand Voyager SE, shown in Medium Swirl Metallic Clear Coat.

Plymouth Grand Voyager LE...grand-size comfort

Grand Voyager LE's wheelbase is seven inches longer, and its body length 14.6 inches greater than Voyager. So Grand Voyager LE gives you more room for everything. Like comfortable, **standard seating for seven** with 144 percent more rear-seat knee room than a standard Voyager. Plus **30 cubic feet of storage** behind the rear seat. Grand Voyager LE also provides an abundant 150



cubic feet of cargo area with rear seats removed. Voyager's standard **sliding side door** (shown left), ensures easy access through an entrance over 29 inches wide, and with low step-up.

Spacious





Voyager LE/Grand Voyager LE. Standard luxury cloth trim reclining high-back front bucket seats with integral head restraints, inboard folding armrests, plus front passenger seatback storage pocket and seat handle. Standard seven-passenger seating includes two-passenger and five-passenger rear bench seat in matching trim. In Almond, Bordeaux, Silver/Charcoal, Twilight Blue.



Voyager SE/Grand Voyager SE. Standard deluxe cloth with vinyl trim reclining high-back front bucket seats or optional luxury all-vinyl high-back front bucket seats, both with integral head restraints, inboard folding armrests, and passenger seatback rear handle. Includes a five-passenger rear bench seat in matching trim. Standard seven-passenger seating on Grand Voyager SE includes two-passenger and five-passenger rear bench seats in matching trim. In Almond*, Bordeaux, Silver/Charcoal, Charcoal, Twilight Blue. *Almond not available in all vinyl trims.



Voyager. Standard deluxe cloth with vinyl trim reclining high-back front bucket seats with integral head restraints, inboard folding armrests, and passenger seatback rear handle. Includes a five-passenger rear bench seat in matching trim. Seven-passenger seating is optional on Voyager. In Almond, Bordeaux, Silver/Charcoal.

Seating choices that adapt to your needs

Plymouth Voyager is a crowd pleaser, with a choice of seating arrangements to suit almost any family's preference. Voyager and

Flexible

Voyager SE provide standard five-passenger or optional seven-passenger seating. Voyager LE, Grand Voyager SE and Grand Voyager LE feature standard seven-passenger seating.

Voyager's LE interior, shown left in Almond, is extra roomy to accommodate growing families. And there's plenty of passenger walk-through space from the front seats to both rear seats. For extended traveling, choose the available

Converta-Bed (shown right), that sleeps two comfortably. Simply lift the lever and the rear bench seat folds into a handy bed. (Available only on Voyager SE and LE models with five-passenger seating.)



Bench seats are movable and convertible for extra flexibility. Staircase with vinyl trim seats are available on Voyager LE. Colors shown are Almond and Blue.



Voyager LE's instrument panel is beautifully designed to meet human needs. Behind the luxury steering wheel all controls are close at hand, and analog gauges are within easy view. The standard front console contains cassette tape storage (not shown) and a handy cubby box. Standard air conditioning improvements ensure faster cool-down.



Passengers will find the storage bin with dual cup holders on the left rear wheel well a great convenience. There's also one on the right side with a single cup holder.



Conveniently positioned cup holders keep drinks securely in place.



Voyager LE's center console offers a wealth of convenience. Designated cup holders, pencil and coin holders, cigar lighter and more.



The *Mighty* wiper/washer, with fast intermittent time-delay wipe, ensures a clear rear view. It's standard on all Voyagers.



A lockable storage drawer keeps items safely concealed under the front passenger bucket seat.



Road wheels and wheel covers (set of four) add styling flair to your Voyager. (A) 14-inch wire wheel covers with security locks, optional on all Voyagers. (Requires white sidewall tires.) (B) 15-inch styled steel roof wheels with bright trim ring, lug nuts, and hub cover. Included with and available only in Heavy-Duty Trailer Towing Package. (C) 15-inch cast aluminum road wheels, included in the LX Decor Package, and available in the Sport Road Wheel Package on all SE and LE models.



Power sunroof. Lets you soak up sunshine and fresh air. Features sun-screen glass with automatic air deflector to reduce wind noise, power flip-up for improved ventilation, and a sliding sunshade. (See page 21 for optional availability.)



Electric rear window defroster. Clears snow, ice, and fog for good rearward visibility in all kinds of weather.



Power windows and door locks comprise the Power Convenience Package available for Voyager SE models. Switches are located on driver and front passenger armrests, providing security and finger-tip control.



Chrysler Infinity I Sound System. AM stereo, FM stereo radio/cassette sound system includes electronic tuning, seek-and-store, Dynamic Noise Reduction, cassette tape player with automatic reverse, Infinity speakers, Dolby B1 Noise Reduction, and integral digital clock. Available on SE and LE models, and included in the Luxury Equipment Discount Package. (See page 20 for complete radio description.)

*Some AM stereo broadcasting may not be compatible with this radio. †Dynamic Noise Reduction is a trademark of National Semiconductor Corporation. ‡Dolby B is a trademark of Dolby Laboratories.



Mopar® Accessories from your dealer personalize and protect your Voyager:

Trailer Carrier. Securely holds one trailer of any size including touring models. Mounts with hand tools to crossbars of available Mopar roof rack.

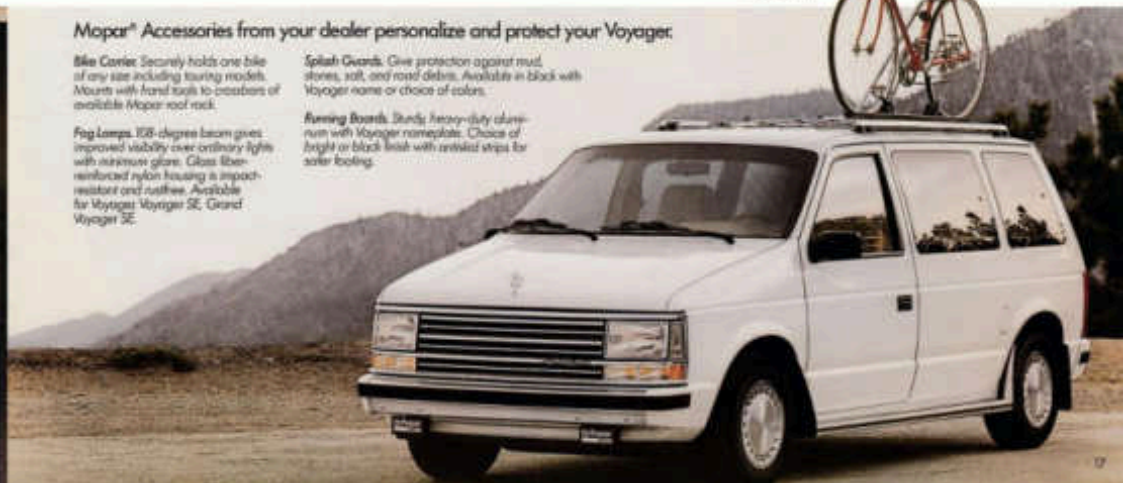
Fog Lamps. 100-degree beam gives improved visibility over ordinary lights with maximum glare. Glass fiber-reinforced nylon housing is impact-resistant and rust-free. Available for Voyagers Voyager SE, Grand Voyager SE.

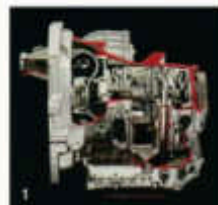
Splash Guards. Give protection against mud, stones, salt, and road debris. Available in black with Voyager name or choice of colors.

Roofing Boards. Sturdy heavy-duty aluminum with Voyager nameplate. Choice of bright or black finish with stainless straps for safer loading.



Loading and unloading is a cinch with Voyager's low, flat cargo floor and wide, high-opening liftgate. The standard assist handle makes liftgate closing easy. Dual liftgate-mounted floodlights and night-vision load assist. (See page 20 for availability.) Standard rear quarter and corner vent windows flip open for extra fresh air. (See page 20 for optional power rear quarter vent window availability.)





Plymouth Voyager quality improvements for 1990 include: The new high-spirited 3.3-liter MPI V-6 engine, designed and built by Chrysler. It's the new standard engine in Grand Voyager SE and LE. Achieves 15 percent better acceleration and seven percent greater torque than last year's 3.0-liter MPI V-6 Grand Voyager. (See page 22 for engine details.)

Plymouth's **UltraDrive** **1** electronic four-speed overdrive automatic transaxle for 1990 is smoother on downshifts while retaining its quick acceleration, quiet cruising, and excellent fuel economy. This advanced transaxle was introduced last year as an industry "first."

Voyager's corrosion protection **2** uses galvanized steel body panels extensively. And Plymouth's 13-step pre-paint treatment and electropainting process gives you a highly corrosion-resistant finish. (See back cover for anticorrosion warranty details.)

The **"Stainless Pentasteel"** Exhaust system **3** offers corrosion-resistance and long life. Front suspension gas-charged struts **4** are redesigned for greater absorption of road shocks and longer strut life. A twenty-gallon fuel tank **5** is standard on all Voyagers. Standard power-assisted rack-and-pinion steering **6** means low turning effort. Standard power-assisted front disc brakes **7** and self-adjusting rear drum brakes with height-sensing proportioning valve mean smooth, sure braking.



VOYAGER DIMENSIONS



SPECIFICATIONS

SPECIFICATIONS	VOYAGER SE/LE	GRAND VOYAGER SE/LE
Length—Cargo compartment at floor	61.8"	60.4"
Width—Cargo compartment between wheelhousings	48.2"	48.2"
Cargo Volume		
Five-passenger seating	60 cu ft	76 cu ft
Seven-passenger seating	15 cu ft	30 cu ft
Rear seats removed	125 cu ft	150 cu ft

STANDARD SAFETY FEATURES

- Airbrake (brake lock) • Backup lights • Brake fluid pressure loss warning light (also serves as indicator when parking brake is applied) • Combination lap/shoulder belts for the driver and right front passenger; top belts for all other passengers • Dual-braking system with separate brake fluid reservoirs in the master cylinder • Electronic ignition • Electric windshield and rear window wipers and wipers • Energy-absorbing front seatbelts • Energy-absorbing steering column • Energy-absorbing run visors • Freeze-resistant front vented disc brakes • Glove reduction recessed for instrument panel, steering wheel and windshield wipers • Hazard-warning flasher system • Headlight and wiper circuit breakers with automatic reset • Ignition and steering column lock • Inside rear-view mirror • Interlocking door latches • Key-in-ignition warning • Non-overide door locks (except driver's door) • Outside rear-view mirrors • Reinforced inside door release handles • Reinforced windshield header and roof • Rebarbed window crank levers • Safety-Rim wheels • Seat belt reminder system • Side marker lights and reflectors • Turn signals with turn-change feature

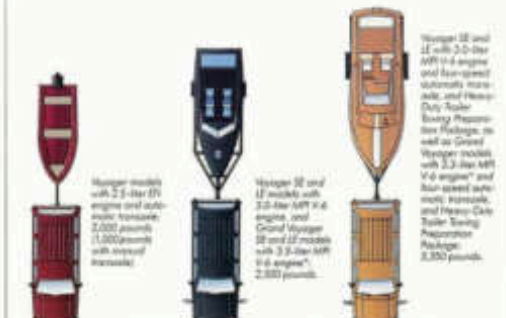
POWER TRAIN CHART¹

(Consult dealer for current availability)

	VOYAGER			GRAND VOYAGER	
	BASE	SE	LE	SE	LE
2.5-liter with five-speed manual	S	S	S	NA	NA
2.5-liter with three-speed automatic	O	O	O	NA	NA
2.5-liter Turbo ² with 4.0 four-speed manual	O	O	O	NA	NA
2.5-liter Turbo ² with three-speed automatic	O	O	O	NA	NA
3.0-Di ³ with three-speed automatic	NA	O	NA	NA	NA
3.3-liter with UltraDrive automatic	NA	O	O	NA	NA
3.3-liter with UltraDrive automatic	NA	NA	NA	S	S

S—Standard; O—Optionally available; NA—Not available.
¹California emissions control and testing required at extra cost for all vehicles registered in California; not available elsewhere.
²Requires unheated fuel recommended for optimum performance. Turbocharged engine not recommended for trailer towing and such use may void warranty.
³NA for California Motor Corporation.

VOYAGER/GRAND VOYAGER TOWING APPLICATIONS



All Voyager models with 2.5-liter EFI engine. Voyager's standard 2.5-liter EFI four-cylinder engine, when teamed with the available automatic transaxle, provides up to 2,000 pounds of towing capacity, covering your light trailer needs. (1,000 pounds with second towpoint.)

Voyager/Grand Voyager SE and LE models with V-6 engine, four-speed automatic transaxle and Heavy-Duty Trailer Towing Preparation Package. Voyager SE and LE with optional 3.0-liter MPI V-6 engine¹ and four-speed automatic transaxle, and Grand Voyager models with new standard 3.3-liter MPI V-6 engine and four-speed automatic transaxle, provide you with 2,350 pounds of trailer towing ability for heavy towing/trailing needs, when equipped with the optional Heavy-Duty Trailer Towing Preparation Package.

TRAILER TOWING WARNING
 Turbocharged engine not recommended for trailer towing, and such use may void warranty.

¹See page 22 for turbo engine information.

TECHNICAL



VOYAGER/GRAND VOYAGER OPTIONS PACKAGES

Package	Q1	Q2	Q3	Q4	Q5
Convenience-Bed Package		○	○		
Deluxe Convenience Package	○	○	○	○	○
Gauge Package		P1	S	S	S
Heavy-Duty Trailer Tow Preparation Package		○	○	○	○
Light Package	P1	P1-2	S	P1	S
Luxury Equipment Discount Package		○	○	○	○
LX Decor Package		○	○		
Popular Equipment Discount Package		○	S	○	S
Power Convenience Package		○	○	○	○
Seven-Passenger Seating Package	○	○	S	S	S
Sport Road Wheel Package		○	○	○	○
Value-Wagon Package	○	○	○	○	○

Q1 - Standard Q2 - Currently available P1 - Package only

Available as part of the Popular Equipment Discount and the Luxury Equipment Discount Packages. Available as part of the Value-Wagon Package on base Voyager and Voyager LE. Value-Wagon Package required on extra cost.

COLOR TRIM/COMBINATIONS

VOYAGER	INTERIOR
Black Clear Coat	Almond, Beekman, Silver-Chocolate
Ice Blue Metallic Clear Coat	Silver-Chocolate
Twilight Blue Pearl Coat*	Silver-Chocolate
Charcoal Pearl Coat	Beekman
Black Cherry Pearl Coat	Beekman
Black Red Pearl Coat*	Silver-Chocolate
Dark Suede Metallic Clear Coat	Almond
Medium Suede Metallic Clear Coat	Almond, Beekman
Bright White Clear Coat	

VOYAGER/GRAND VOYAGER SE AND VOYAGER/GRAND VOYAGER LE

EXTERIOR	INTERIOR
Black Clear Coat	Almond, Beekman, Silver-Chocolate
Twilight Blue Pearl Coat*	Twilight Blue
Charcoal Pearl Coat	Silver-Chocolate
Black Cherry Pearl Coat	Beekman
Black Red Pearl Coat*	Beekman
Dark Suede Metallic Clear Coat	Almond
Medium Suede Metallic Clear Coat	Almond
Bright White Clear Coat	Twilight Blue, Beekman

Clear Red Pearl Coat*	Beekman
Ice Blue Metallic Clear Coat	Twilight Blue

VOYAGER TWO-TONE EXTERIOR COLORS†

EXTERIOR	INTERIOR
Ice Blue Metallic Clear Coat	Twilight Blue
Twilight Blue Pearl Coat	Silver-Chocolate
Charcoal Pearl Coat	Silver-Chocolate
Black Clear Coat	Beekman
Black Cherry Pearl Coat	Beekman
Black Red Pearl Coat*	Silver-Chocolate
Dark Suede Metallic Clear Coat	Almond
Medium Suede Metallic Clear Coat	Almond
Dark Suede Metallic Clear Coat	Almond

LX DECOR PACKAGE COLOR COMBINATIONS

EXTERIOR	INTERIOR
Black Clear Coat	Almond, Beekman, Silver-Chocolate
Black Cherry Pearl Coat	Beekman
Twilight Blue Pearl Coat	Twilight Blue
Bright White Clear Coat	Almond, Beekman, Silver-Chocolate, Twilight Blue

*Available at extra cost. Available at extra cost on Voyager SE. No charge option on Voyager LE as replacement for standard woodgrain treatment.

NOTE: Due to printing limitations, the colors shown will vary slightly from actual hues. See your Plymouth dealer for accurate color chips. Clear Coat finish is standard on every 1990 passenger van built by Chrysler Motors.

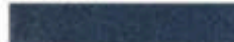
MILEAGE

22 EPA est. city mpg, 28 EPA est. hwy. mpg
*Mileage figures based on base model standard engine with 3 speed manual overdrive transmission.

EXTERIOR COLORS



Black Clear Coat



Twilight Blue Pearl Coat*



Black Cherry Pearl Coat



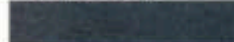
Radiant Silver Metallic Clear Coat



Medium Suede Metallic Clear Coat



Ice Blue Metallic Clear Coat



Charcoal Pearl Coat



Clear Red Pearl Coat*



Dark Suede Metallic Clear Coat

Bright White Clear Coat

*Available at extra cost.

†Available at extra cost on Voyager SE. No charge option on Voyager LE as replacement for standard woodgrain treatment.

Note: Due to printing limitations, the colors shown will vary slightly from actual hues. See your dealer for accurate color chips.

Clear Coat finish is standard on every 1990 passenger car built by Chrysler Motors.

TWO-TONE EXTERIOR COLORS†



Ice Blue Metallic Clear Coat/Twilight Blue Pearl Coat



Charcoal Pearl Coat/Black Clear Coat



Clear Red Pearl Coat/Black Cherry Pearl Coat



Radiant Silver Metallic Clear Coat/Charcoal Pearl Coat



Medium Suede Metallic Clear Coat/Dark Suede Metallic Clear Coat

LX DECOR PACKAGE COLOR COMBINATIONS

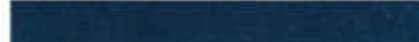
(Available only on Voyager LE equipped with the optional LX Decor Package.)



Black Clear Coat



Black Cherry Pearl Coat



Twilight Blue Pearl Coat

Bright White Clear Coat

Optional Service Contract Coverage
Chrysler Service Contracts provide you with additional peace of mind protection for your new vehicle. Chrysler Motors offers a variety of plans to meet your needs. Plan coverage begins after your vehicle's basic warranty expires. A deductible applies. Allowance for car rental and towing are also included. See your dealer for details.



MOPAR parts are engineered by Chrysler Motors for use in your new Plymouth Voyager. When replacement is necessary, be sure to specify MOPAR parts. Serviced by professional automotive technicians worldwide.

Consider Leasing

More consumers are considering leasing as an alternative to buying. Leasing a new Plymouth Voyager usually involves a small security deposit and a first month's lease payment. Monthly payments are usually less than financing a new car purchase. Ask your dealer for details.



Making the best even more affordable.

Chrysler Credit offers a variety of finance programs that will help make your new Plymouth Voyager even more affordable. These special finance and leasing programs are designed to meet the needs of today's automotive buyer. They include: Gold Key Lease, America's Choice Payment Plan, College Graduate Plans, Rental Financing and more. Ask your salesperson for details.

Chrysler Purchase Assistance Program For The Physically Challenged

Cash rebates of up to \$500 are available for qualified adaptive driving devices on 1990 Chrysler Motors cars and trucks. For further information, contact your dealer or the PHYSICALLY CHALLENGED RESOURCE CENTER at 1-800-205-8977.



Plymouth and the U.S. Forest Service
Proud Partners in the National Forest Science Byways Program.

All product illustrations and specifications are based upon current information at the time of publication approval. Although descriptions are believed correct, complete accuracy cannot be guaranteed. Chrysler Motors reserves the right to make changes from time to time, without notice or obligation, in prices, specifications, colors and materials, and to change or discontinue models. See your dealer for the latest information. Plymouth and MOPAR are registered trademarks, and Voyager is a trademark of Chrysler Motors Corporation.

Buckle up for safety.

TIRES

TIRE SIZE AND TYPE (SET OF FOUR)	MIN SIZE	AVAILABILITY
P195/75R14 steel-belted radial black sidewall	14" x 5.5"	Standard
P195/75R14 all-season radial white sidewall	15" x 6.0"	Optional Package Required
P225/70R15 steel-belted radial black sidewall	14" x 5.5"	Optional on LE Models. Optional Package Required All Other Models
P225/70R15 all-season radial black sidewall	15" x 6.0"	Package

*Set of four standard on LE models. Compact type goes 17/25/75R15 standard on base and SE models. Also fits four converted type goes for at extra cost.



The name Plymouth will always stand for quality, plenty of standard features, and honest value. But today, car shoppers have a lot of choices. So we'd better have some darn good reasons for you to pick the new Plymouth...and we do. Plymouth Voyager for the '90s means contemporary styling, advanced technology, solid dependability, and safety-minded engineering innovations such as Unibelt shoulder restraints and more.

Our commitment to our customer is underscored by the latest J. D. Power survey¹ which put Chrysler Motors ahead of all other domestic manufacturers in Customer Satisfaction for the third year in a row. Even more satisfying, Plymouth's full line of vehicles increased its ranking more than any other brand, import or domestic. Plymouth believes every American has the right to friendly treatment, honest service, and competent repairs. That's the mission of our 7/70 Limited Warranty, and it's part of our Corporate philosophy. So, while there are many cars you could choose to own, Plymouth for 1990 has more of what you're looking for.

¹J.D. Power and Associates 1988 passenger car Customer Satisfaction Index of 1988 models.



Quality Worth Backing

All Chrysler Motors domestically built automobiles and light trucks now benefit from the 7/70 Power Train Limited Warranty. Upon expiration of the 12-month or 12,000-mile Basic Limited Warranty, coverage is extended on power train components to seven years or 70,000 miles.* This represents one of the most comprehensive original limited warranties available on cars and trucks built and sold in the United States, and points out Chrysler Motors' pride in building and backing its products the right way.

In addition to the 7/70 Power Train Limited Warranty described above, all domestically built Chrysler Motors automobiles offer the 7/100 Anticorrosion Limited Warranty. Your dealer will repair or replace at no charge outer body sheet metal panels found to have developed perforation (rust-through) in normal use up to seven years or 100,000 miles. See your dealer for a copy of the limited warranties.

*A deductible applies.

Plymouth Voyager

