

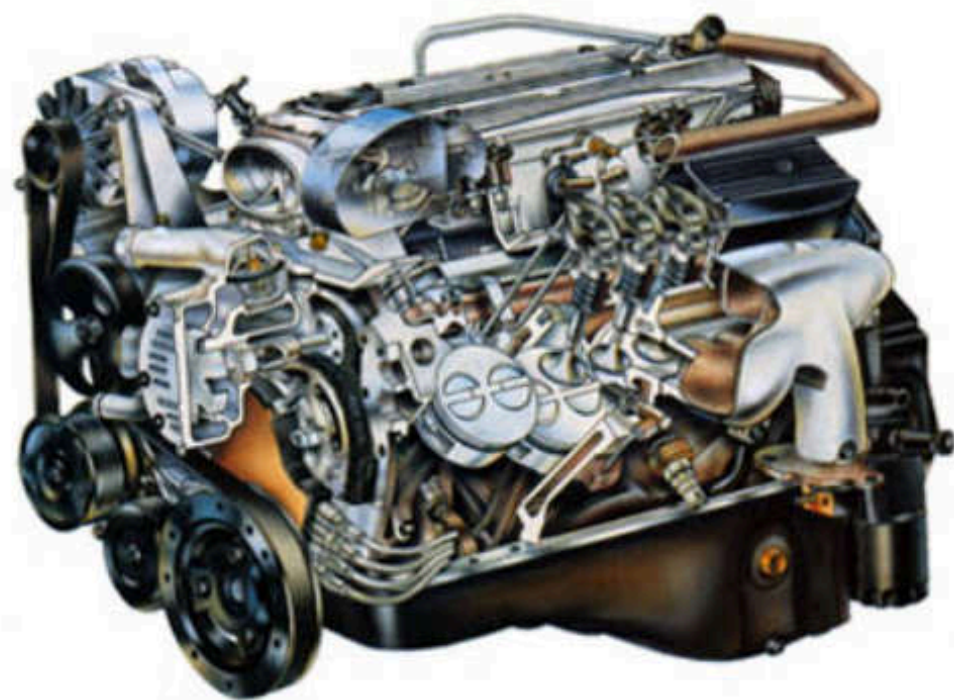
FIREBIRD

1993. We Are Driving Excitement.





Legendary excitement. Reborn.



American in design. Ingenious in execution. Pontiac in heritage. The 1993 Trans Am puts a 21st century twist on the great American sports car.

As tradition dictates, V8 power is at your command. With a displacement of 5.7 liters, the LT1 engine gives you the confidence of 275 horsepower and 325 lbs-ft of torque to instantly respond to the most challenging driving situations.

Power is harnessed by one of two transmissions—a 6-speed manual (a

close-ratio 4-speed plus 2 overdrive gears) or electronically controlled 4-speed automatic overdrive. The choice is yours. The result is the same—the most dynamic Trans Am ever—a vehicle that truly puts the driver in control.

The new technology on board Trans Am includes a computer-designed chassis featuring a short/long arm front suspension, rack-and-pinion power steering, and four-wheel disc anti-lock brakes. Those who love excitement need look no further.



*Always wear safety belts, even in cars equipped with airbags.

Trans Am in Bright Red with standard Bright Silver 16" x 8" Sport Cast aluminum wheels and "Z" speed-rated P245/50ZR16 Goodyear Eagle GSC tires. At far left, Trans Am's mighty 275 horsepower LT1 V8. As on every Firebird, dual airbags are standard on Trans Am.*



Formula in Black with standard Bright Silver 16" x 8" Sport Cast aluminum wheels with P235/55R16 Goodyear Eagle GA touring tires. Like Trans Am and Firebird, many of Formula's body panels are made from dent-resistant and rust-proof composite materials. Formula's premium de Carbon® monotube shock absorbers, below, provide excellent handling and a smooth ride.



Pontiac's new and improved Formula for performance.

The equation goes like this: Extract 275 horsepower from 5.7 liters. Add transmissions with four or six gears. Factor in a rigid body structure of 3,381 pounds and wrap it in a magnetic personality. The resulting sum of the parts is a rolling technical masterpiece.

First, Formula's body is built from

four materials—steel and three amalgamations of rustproof composites that help reduce overall weight.

Next, the engine itself is an accomplishment of advanced technology: its Opti-spark ignition is the most accurate timing system ever offered in a Pontiac, and helps ensure excellent performance, reliability and quick starts in all

climates. Even the gear-driven water pump is a model of durability, and the coolant runs from top to bottom—a more efficient flow that increases engine power due to superior cooling characteristics.

Sophisticated engineering carries through to the chassis, where the de Carbon® monotube shock absorb-

ers dampen suspension movements at each corner. These high-tech shocks are combined with the short/long arm front suspension, low-profile P235/55R16 high-performance radials and four-wheel anti-lock disc brakes. A power rack-and-pinion power steering system that's conversant in road feel rounds out Formula's handling package.



Firebird in Bright White with standard 16" x 7.5" cast aluminum wheels and P215/60R16 Goodyear Eagle GA touring tires.

At right, every Firebird, Formula and Trans Am comes with standard dual front airbags.*



Fly without ever leaving the ground.

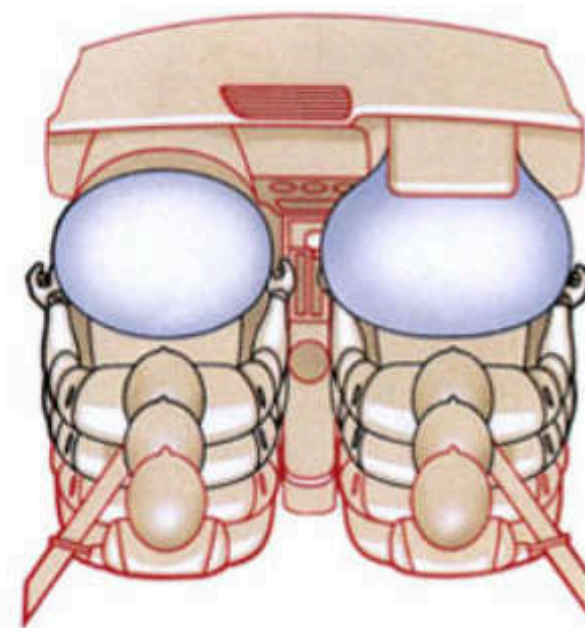
The windshield lays back at a 68° angle. Headlamps hide behind the aerodynamic nose. Together, they help create the most aggressive silhouette on the road.

Motivation for flight comes from Firebird's sequentially fuel-injected 3.4 liter V6. This specially developed engine smoothly produces 160 horsepower and a full 200 lbs-ft of torque with the noteworthy fuel efficiency of an EPA estimated MPG-19 city/28 highway. Hooked to a 5-speed manual or a

4-speed automatic, throttle response is energizing. Braking is stable and predictable - four-wheel anti-lock brakes are standard.

Firebird's interior matches the exterior in form and function. Complete controls and analog gauges surround the driver. This is a driver's environment. Dual airbags are standard,* as is a Delco AM/FM stereo cassette and a fold-down rear-seat back. More interior details are on the next page, with a complete list of features on pages 10-11.

*Always wear safety belts, even in cars equipped with airbags.





All work and all play.

If Firebird's cockpit were all work and no play, it would be a very dull interior indeed. Knowing this, Firebird engineers decided on the best solution.

When Firebird goes to work, it surrounds you with the necessary.

Complete analog instrumentation clearly communicates key system information. Design of switches and controls also shows the engineering commitment to a proper driving environment and intuitive operation.

Significant safety features abound,

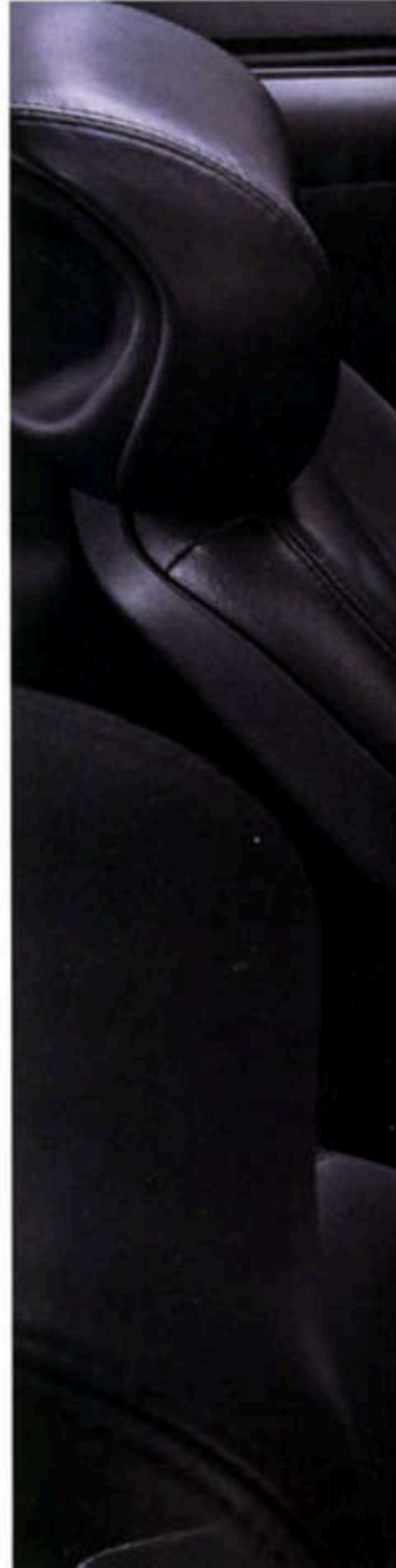
including dual front airbags that supplement three-point safety belts. Of course, always wear safety belts, even in cars equipped with airbags.

When Firebird goes to play, it surrounds you with the enjoyable. That's why Firebird, Formula and Trans Am

are equipped for the fun of serious driving. Trans Am's long list of standards (that are optional on both other models) includes a premium 10-speaker sound system with cassette and graphic equalizer, cruise control, power windows, and automatic power door locks.



Cloth bucket seats, above, are standard on Firebird. Trans Am's interior embodies form and function: dual front airbags, steering-wheel-mounted radio controls, remote keyless entry, rotary switches for the lights and air conditioning, and easily readable analog gauges are all standard. Storage options include a full-size glove box, center console storage and map pockets. Leather seating surfaces, right, are available.



Firebird Features & Options

Pontiac Cares

Pontiac backs every 1993 Firebird with the following services. See the back cover of this catalog for additional details.



	Firebird	Formula	Trans Am
Extensive 3-year/36,000-mile no-deductible warranty protection	S	S	S
24-hour Roadside Assistance that provides, in an emergency:			
Free lock-out assistance	S	S	S
Free dead-battery assistance	S	S	S
Free out-of-fuel assistance	S	S	S
Free flat-tire assistance	S	S	S
Courtesy Transportation	S	S	S

Exterior Features

Bumpers, 5-mile-per-hour front and rear	S	S	S
Composite doors, fenders, fascias, roof, rear deck and spoiler	S	S	S
Fog lamps	-	-	S
Front air dam	S	S	S
Glass, tinted liftback with strut supports, Solar-Ray tinted	S	S	S
Hatch roof, removable with locking package	A	A	A
Sunshade, removable, for hatch roof	A	A	A
Headlamps, concealed quartz halogen (electrically operated)	S	S	S
Mirrors: Sport, body color, LH remote control, RH manual convex	S	S	-
Sport LH power, RH power convex with blue glass	A	A	S
Moldings, body-color bodyside	A	A	S
Paint, basecoat/clearcoat	S	S	S
Spoiler, aero rear-deck (Trans Am features specific design)	S	S	S
Taillamps, "neutral density" lens with smooth contour appearance	-	S	S
Tires: (radial) P215/60R16 steel-belted touring	S	-	-
P235/55R16 steel-belted touring	A	S	-
P245/50ZR16 steel-belted high-performance	-	A	S
Compact spare, high-pressure (T125/70D15) 15" x 4" steel wheel	S	S	S
Wheels: 16" x 7-1/2" cast aluminum	S	-	-
Bright Silver 16" x 8" Sport Cast aluminum	-	S	S
Bright White 16" x 8" Sport Cast aluminum	-	A	A

Interior Features

Airbags, driver and front passenger (Supplemental Inflatable Restraint)	S	S	S
Air conditioning	A	S	S
Console, full-length front adjoining to instrument panel	S	S	S
Control lever, multi-function (includes controlled-cycle wipers)	S	S	S
Cruise control	A	A	S
Defogger: Side-window	S	S	S
Rear-window	A	A	S
Door locks, power, automatic	A	A	S

S = Standard A = Available -- = Not available

Interior Features (cont'd.)

	Firebird	Formula	Trans Am
Floor mats: Front	S	S	S
Rear	A	A	S
Glove box, with lock and light	S	S	S
Hatch release, remote	S	S	S
Hood release, inside	S	S	S
Horns, dual	S	S	S
Instrumentation, gauge (including tachometer and trip odometer)	S	S	S
Keyless entry, remote	A	A	S
Mirrors: Day/night inside rearview with reading lamps, and dual visor vanity	S	S	S
Radios: Delco ETR AM stereo with cassette and clock (UM6)	S	S	-
Delco ETR AM stereo/FM stereo with auto-reverse cassette and 5-band equalizer. Includes clock, seek up/down, scan, search and replay, steering wheel radio controls and Hi-Performance 10-speaker system (UX1). Requires power windows, power door locks and Leather Appointment Group	A	A	S
Delco ETR AM stereo/FM stereo with compact disc player and 5-band equalizer. Includes clock, seek up/down, scan, search and replay, steering wheel radio controls with Delco Loc II theft-deterrent and Hi-Performance 10-speaker system (U1A). Requires power windows, power door locks and Leather Appointment Group	A	A	A
Safety belts, 3-point driver and front/rear passenger	S	S	S
Seat adjuster: 2-way manual front, driver/passenger	S	S	-
4-way manual front, driver/2-way manual front, passenger	A	-	S
6-way power front, driver	A	A	-
Seats: Reclining front bucket, folding rear	S	S	S
Leather Appointment Group (requires Hi-Performance speaker system)	A	A	A
Steering wheel: Four-spoke with Tilt-Wheel adjustable steering column	S	S	S
Leather-wrapped (includes leather-wrapped shift knob and parking brake handle)	A	A	S
Theft-deterrent system, PASS-Key II	S	S	S
Windows, power, express-down on driver side	A	A	S

Mechanical

Battery, Delco Freedom II	S	S	S
Brakes: Parking with self-adjusting feature	S	S	S
Power front disc/rear drum with anti-lock braking system (ABS)	S	-	-
Power 4-wheel disc with anti-lock braking system (ABS)	-	S	S
California emissions requirements	A	A	A
Engines: 3.4 liter V6 with sequential port fuel injection	S	-	-
5.7 liter V8 with sequential port fuel injection	-	S	S
Low oil level monitor and warning	S	S	S
Rear axle, performance ratio: includes 3.23 axle ratio, engine oil cooler, P245/50ZR16 tires	-	A	S
Rear-wheel drive	S	S	S
Steering power rack-and-pinion	S	S	S
Suspensions: Short/long arm front and torque arm/track bar rear	S	S	S
Ride and handling	S	-	-
Performance ride and handling	-	S	S
Transmissions: 5-speed manual	S	-	-
6-speed manual	-	S	S
4-speed automatic	A	A	A

Inside information: Firebird Trans Am.

Body and chassis are stiffer than the 1992 Firebird. A stiff body contributes to remarkable ride quality, handling and interior quietness.

Silicone-impregnated weather stripping helps ensure a watertight seal around windows and available T-tops.

Sheet Molding Compound (SMC) is the rustproof composite used to form the doors, roof and rear hatch.

Reaction Injection Molded Polyurea (RIM) is the rustproof and ding-resistant composite used to create the front fenders and front fascia.

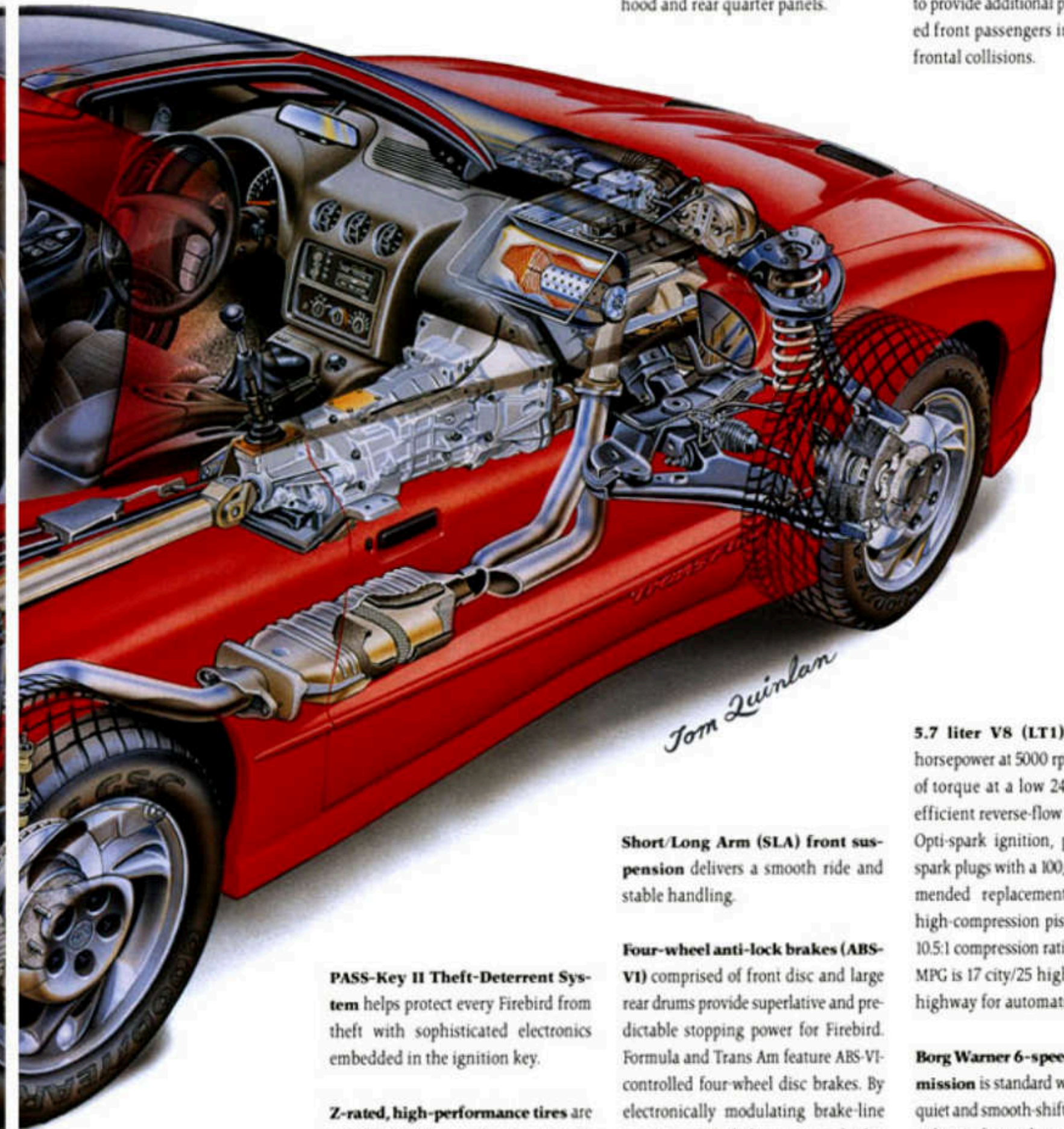
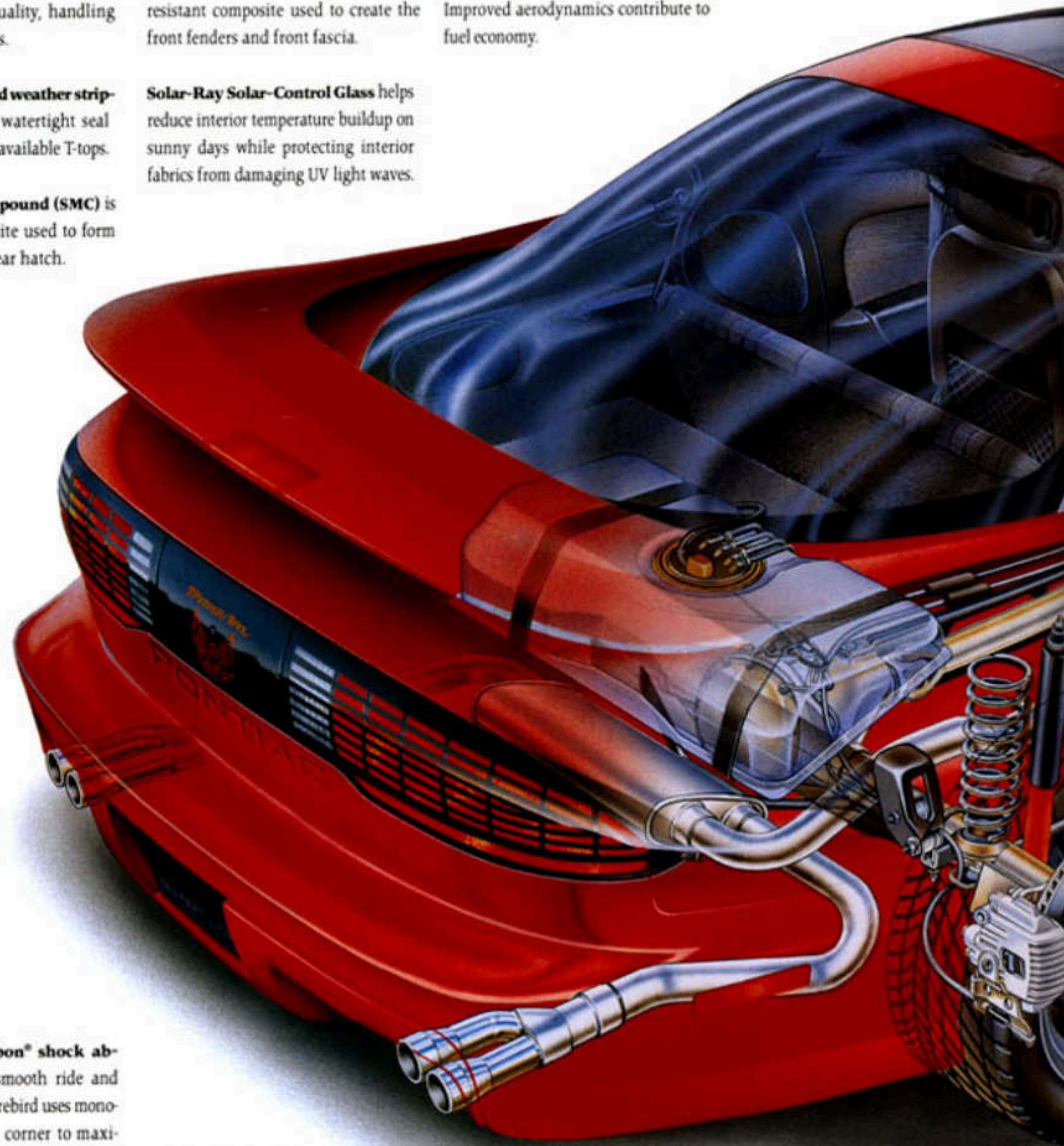
Solar-Ray Solar-Control Glass helps reduce interior temperature buildup on sunny days while protecting interior fabrics from damaging UV light waves.

Functional aerodynamics effectively channel air around Firebird's body. Improved aerodynamics contribute to fuel economy.

Monotube de Carbon® shock absorbers provide a smooth ride and excellent handling. Firebird uses monotube shocks at each corner to maximize handling performance.

Brake/Transmission Shift Interlock prevents accidental movement of the automatic transmission shift lever out of "Park" without a deliberate press on the brake pedal.

5-mph bumpers are made from a light yet high-strength structural RIM composite.



68° windshield rake gives Firebird a slick aerodynamic profile.

Two-sided galvanized steel, a superior rust-resistant metal, is used for the hood and rear quarter panels.

Dual front airbags work together with the 3-point lap and shoulder belts to provide additional protection to belted front passengers in certain severe frontal collisions.

PASS-Key II Theft-Deterrent System helps protect every Firebird from theft with sophisticated electronics embedded in the ignition key.

Z-rated, high-performance tires are certified by the manufacturer to withstand extended high-speed driving at or in excess of 149 mph*. Standard on Trans Am and available on Formula are P245/50ZR16 Goodyear Eagle GSC tires.

Short/Long Arm (SLA) front suspension delivers a smooth ride and stable handling.

Four-wheel anti-lock brakes (ABS-VI) comprised of front disc and large rear drums provide superlative and predictable stopping power for Firebird. Formula and Trans Am feature ABS-VI-controlled four-wheel disc brakes. By electronically modulating brake-line pressure, ABS helps prevent brake-induced wheel lock-up, giving the driver an additional measure of steering control while braking on slippery driving surfaces.

5.7 liter V8 (LT1) produces 275 horsepower at 5000 rpm and 325 lbs-ft of torque at a low 2400 rpm. Super-efficient reverse-flow cooling, precise Opti-spark ignition, platinum-tipped spark plugs with a 100,000-mile recommended replacement interval, and high-compression pistons allow for a 10.5:1 compression ratio. EPA estimated MPG is 17 city/25 highway (17 city/24 highway for automatic).

Borg Warner 6-speed manual transmission is standard with the LT1. This quiet and smooth-shifting gearbox provides six forward speeds to maximize performance (gears 1 through 4) and minimize powertrain fuel consumption and noise at highway speeds (overdrive gears 5 and 6).

Tom Quinlan

*Pontiac does not encourage or endorse exceeding posted speed limits.

Option Groups Some available options may require additional equipment. See your dealer for details.

RPO		Firebird			Formula			Trans Am
		ISB	ISC	ISD	ISA	ISB	ISC	ISA
C60	Air conditioning	■	■	■	S	S	S	S
B35	Rear floor mats	■	■	■		■	■	S
B84	Bodyside moldings	■	■	■		■	■	S
A31	Power windows			■		■	■	S
AU3	Power door locks			■		■	■	S
AH3	4-way manual seat adjuster, driver's side	■	■	■		—	—	S
K34	Cruise control, resume speed			■		■	■	S
DG7	Mirrors, Sport LH power, RH power convex, blue tint			■		■	■	S
AU0	Remote keyless entry with illuminated entry			■			■	S
UX1	Cassette with equalizer, steering wheel controls and 10-speaker sound system			■			■	S

■ — Included in option group S — Standard — — Not available

Exterior Colors See dealer for model/color availability.



Dark Green Metallic



Yellow



Bright Red



Medium Red Metallic



Bright Blue Metallic



Gray Purple Metallic



Bright White



Black

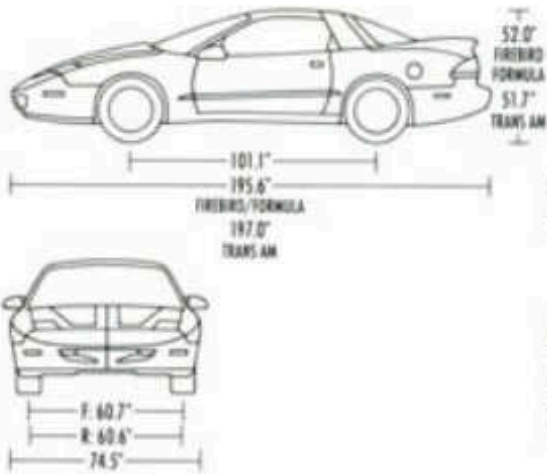
Specifications

Engine/drive:	Front engine, rear-wheel drive
Curb weight:	3234 to 3544 lbs.
Fuel capacity:	15.5 gal.

Interior Dimensions

Headroom, f/r:	37.2"/35.3"
Legroom, f/r:	43.0"/28.9"
Shoulder room, f/r:	57.4"/55.8"
Hip room, f/r:	52.8"/44.4"
Trunk:	
Rear seat up:	12.9 cu ft
Rear seat down:	33.7 cu ft

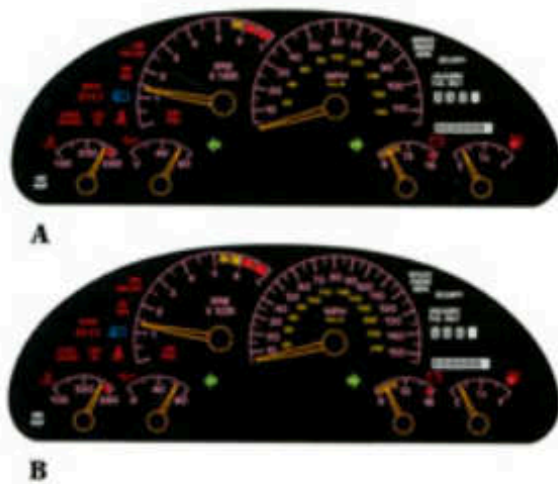
Exterior Dimensions



Instrument Clusters

A Standard cluster includes warning lamps, trip odometer, speedometer, tachometer, gauges for fuel, coolant temperature, oil pressure and voltage. Standard on Firebird and Formula.
B Trans Am cluster includes the same

features as "A" except the speedometer has 150 mph calibrations. Standard on Trans Am. Available on Formula.



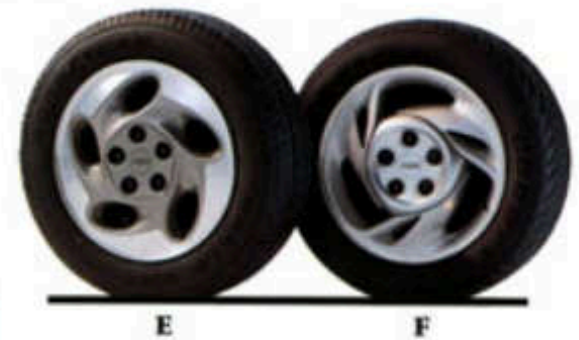
Steering Wheels

C Sport, 4-spoke. Standard on Firebird and Formula.
D Leather-wrapped 4-spoke with radio controls. Standard on Trans Am, available on Firebird and Formula with UX1 and U1A radios.



Wheels

E 16" x 75" Cast aluminum wheels. Standard on Firebird.
F Bright Silver 16" x 8" Sport Cast aluminum wheels. Standard on Formula and Trans Am. This wheel in Bright White is available on Formula and Trans Am.



Engine/Transmission Combinations

	3.4 liter V6	5.7 liter V8
Firebird	S	—
Formula	—	S
Trans Am	—	S
Horsepower	160	275
Torque (lbs-ft)	200	325
5-Speed Manual	S	—
6-Speed Manual	—	S
4-Speed Automatic	A	A
EPA Estimated Fuel Mileage City/Highway		
Manual Transmission	19/28	17/25
Automatic Transmission	19/28	17/24
S — Standard		
A — Available		
— — Not available		



Radios/Sound Systems

G Delco ETR AM/FM stereo with seek up/down, digital clock and auto-reverse cassette player (UM6). Standard on Firebird and Formula.
H Delco ETR AM stereo/FM stereo with seek up/down, digital clock, auto-reverse cassette player, 5-band graphic equalizer, Hi-Performance 10-speaker sound system and steering-wheel-mounted radio controls (UX1). Standard on Trans Am. Available on Firebird and Formula.
I Delco ETR AM stereo/FM stereo with seek up/down, digital clock, compact disc player, 5-band graphic equalizer, Hi-Performance 10-speaker sound system and steering-wheel-mounted radio controls (U1A). Available on all models.

No matter which Firebird you choose...no matter whether you buy or lease...

Pontiac Cares.



Call 1-800-762-4900 for a limited edition publication on the Firebird story (limited supply).

Included as standard equipment on every 1993 Firebird, Formula and Trans Am are the comprehensive services provided through **Pontiac Cares**.

- Toll-free 24-hour Roadside Assistance Center
- 3-year/36,000-mile no-deductible warranty
- Courtesy Transportation.

Roadside Assistance

Need a locksmith? No problem and no cost. Need help changing a spare tire or jump-starting a dead battery? Free, hands-on assistance is just a phone call away. Pontiac's Roadside Assistance Center provides toll-free, 24-hour access to emergency road service anywhere in the country, including Alaska and Hawaii. Just call 1-800-ROADSIDE.

No-Deductible Warranty

Want excellent coverage for your new vehicle? Every new Pontiac is backed by an extensive no-deductible warranty for 3 years or 36,000 miles, whichever comes first. Rust-through corrosion protection extends to 6 years or 100,000 miles, while the Federal Emission Control Systems receive 5-year or 50,000-mile coverage. See your dealer for terms of these

A Word About This Catalog:

We have tried to make this catalog as comprehensive and factual as possible. We reserve the right, however, to make changes at any time, without notice, in prices, colors, materials, equipment, specifications, models and availability. Since some information may have been updated since the time of printing, please check with your Pontiac dealer for complete details.

A Word About The Assembly of Pontiacs:

Pontiacs are assembled by different operating units of General Motors, its

subsidiaries or suppliers to GM worldwide. Pontiacs incorporate thousands of components produced by different operating units of GM, its subsidiaries or suppliers to GM worldwide. We sometimes find it necessary to produce Pontiacs with different or differently sourced components than originally scheduled. All such components have been approved for use in Pontiacs and will provide the quality of performance associated with the Pontiac name. Since some options may be unavailable when your vehicle is assembled, we suggest you verify that your vehicle includes the equipment you

ordered, or if there are changes, that they are acceptable to you.

A Word About Engines:

Pontiacs are equipped with engines produced by different operating units of GM, its subsidiaries or suppliers to GM worldwide.

A Word About Corrosion Protection:

Pontiacs are designed and built to resist corrosion. All body sheet metal components are warranted against rust-through corrosion for 6 years/100,000 miles. Application of additional rust-inhibiting materials is not

limited warranties and for information on long-term extended warranties.

Courtesy Transportation

Need a car when yours is in for service? Pontiac provides no-cost transportation any time a vehicle comes in for warranty work. If the repair requires an overnight stay, Pontiac provides a loaner or reimburses you for a rental – up to \$30 per day. If the vehicle's warranty service can be completed in one day, a one-way shuttle will get you where you need to be – up to ten miles from the dealership.

Answers

Need answers about warranty service or maintenance? Pontiac's Customer Assistance Center makes an almost limitless amount of Pontiac-related information available to you. A staff of advisors stands ready at 1-800-PM CARES to provide professional assistance when you need it.



required under the corrosion coverage and none is recommended.

Pontiac, the Pontiac emblem, Firebird, ETR, Solar-Ray and the GM emblem are registered trademarks of the General Motors Corporation. Tilt-Wheel is a trademark of the General Motors Corporation. PASS-Key II is a registered trademark of the Delco Electronics Corporation.



BUCKLE UP, AMERICA!
© 1993 GENERAL MOTORS CORP.
ALL RIGHTS RESERVED.
LITHO IN U.S.A.