

2004 GTO



Fuel for the Soul™

pontiac.com/gto
OR 1-800-2-PONTIAC

Key: S = Standard A = Available

MSRP¹

	Coupe
GTO	\$32,495

ENGINES

5.7L Gen III all-aluminum LS1 V8
350 HP @ 5200 RPM
365 lb.-ft. of torque @ 4000 RPM

ESTIMATED FUEL ECONOMY IN MPG²

	Automatic	Manual
City	16	17
Highway	21	29

STANDARD CAPACITIES

Seating	4
Cargo volume (cu. ft.) ³	7.0
Fuel tank (gal. approx.)	18

STANDARD EQUIPMENT ON GTO

- Air conditioning
- Automatic rear-seat access
- Console, includes storage compartment, accessory power outlet and dual cup holders
- Cruise control
- Illuminated driver and passenger visor vanity mirrors
- Intermittent windshield wipers
- Machine-drilled accelerator, brake and clutch pedals
- Rear- and side-window defoggers
- Satin Nickel interior appointments
- Soft-Ray[®] tinted windows

PERFORMANCE STATISTICS

- 0-60 in 5.3 seconds with available manual transmission
- Quarter-mile in 13.8 seconds with available manual transmission
- .86 lateral g's

INTERIOR



	GTO
Blaupunkt 200-watt, 10-speaker audio system with six-disc in-dash CD changer	S
Programmable Driver Information Center	S
Power, programmable door locks with lockout protection	S
Sport gauge package, available in five colors	S
Keyless Entry with interior lighting package	S
Eight-way, power front driver and passenger seating with manual lumbar-support controls	S
All-leather, 2+2 bucket seating with sport-style bolsters	S
Tilt and telescopic leather-wrapped steering wheel with radio controls	S
Power windows with driver and passenger Express-Down	S

EXTERIOR

Dual exhaust with chrome tips	S
Spoiler	S
Front foglamps	S

MECHANICAL



5.7L Gen III all-aluminum LS1 V8 with four-speed automatic transmission	S
Tremec close-ratio six-speed manual transmission	A
Rear-wheel drive with limited slip differential and Traction Control	S
Power-assisted, variable-ratio, rack-and-pinion steering	S
MacPherson struts on front suspension with progressive/variable-rate springs	S
Independent rear suspension with semi-trailing link and progressive/variable-rate springs	S
P245/45ZR-17 rated all-season tires with 17-inch aluminum wheels	S

SAFETY

Four-channel, four-wheel disc antilock brake system	S
Frontal driver and passenger air bags ⁴	S
Emergency Mode System	S
Daytime Running Lamps	S
Programmable, automatic headlamps	S
Three-point, all-positions safety belts	S
Rear-seat child belt anchor points	S
Immobilizer theft-deterrent system for content protection	S

EXTERIOR



Quicksilver Metallic



Phantom Black Metallic



Torrid Red



Impulse Blue Metallic



Barbados Blue Metallic

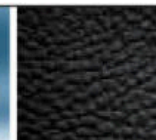
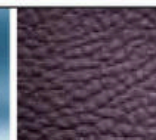
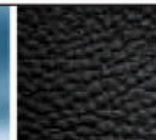
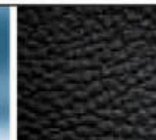
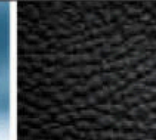


Cosmos Purple Metallic

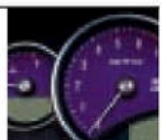
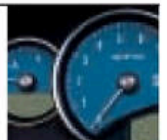
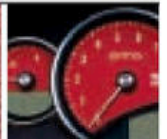


Yellow Jacket

INTERIOR



INSTRUMENTS



¹ Manufacturer's Suggested Retail Price as of 11/14/03. Tax, title, license, dealer fees and optional equipment are extra. \$1,000 gas-guzzler tax is required only with automatic transmission.

² Official EPA estimates not yet available. Estimates based on GM testing.

³ Cargo and load capacity limited by weight and distribution.

⁴ Always use safety belts and proper child restraints, even with air bags. Children are safer when properly secured in a rear seat. See the Owner's Manual for more safety information.

Pontiac is a registered trademark of the GM Corp. ©2004 GM Corp. All rights reserved. GM reserves the right to make changes at any time and without notice in prices, colors, materials, equipment, specifications, models and availability.