

SAAB

90

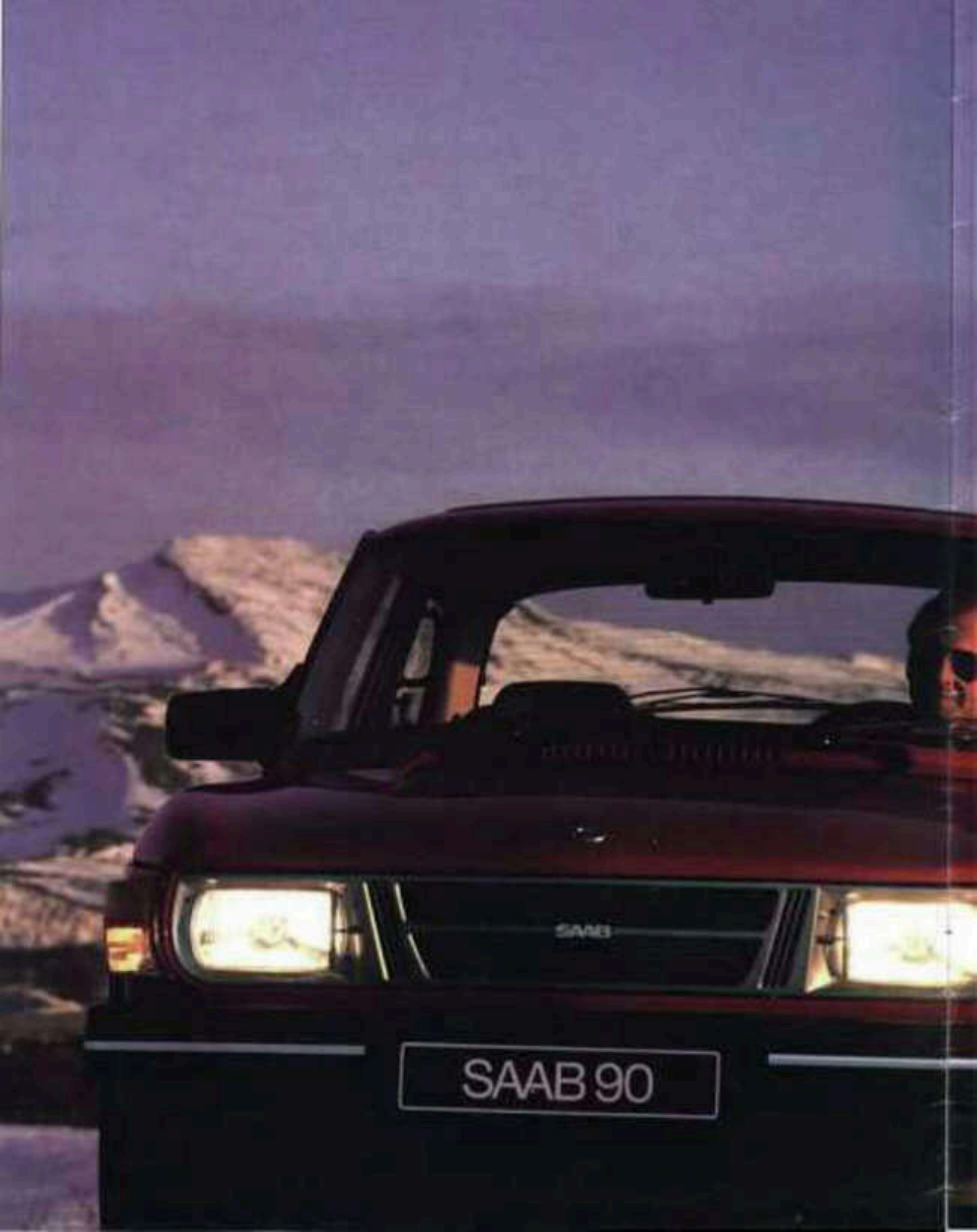


*THE SAAB 90 is a direct descendant of the Saab 99. We have taken all the characteristics that made the Saab 99 so popular and refined them. The result is the Saab 90: an extremely safe and well-built car that won't disappoint you even under the most demanding driving conditions. It provides plenty of space for you, your passengers and your luggage. It also comes equipped with a number of items that we supply as standard, but which you'd have to pay extra for in most other cars.*

*Add to all this the overall economy of running a Saab 90, and the savings which this leaves you to spend on other things, and you will soon realise that the Saab 90 gives you a lot of car for your money.*

*But don't take our word for it, we'd like you to compare it with other cars.*





SAAB 90

## YOU CAN RELY ON THE SAAB 90 UNDER ALL CONDITIONS.

*If you drive a Saab 90, you're off to a flying start — especially when the road conditions are difficult. The front wheel drive, perfect weight distribution and unique design of the chassis all combine to give you first class driving performance and handling. What's more, these characteristics will only be minimally affected by heavy loads in the car or by external factors such as side wind or road conditions.*

**Front wheel drive and perfect weight distribution.** Because the engine is mounted at the front, the driving wheels carry most of the weight. This gives them the best possible road adhesion because the wheels pull the car along, instead of pushing it from the back as they do on a car with rear-wheel drive.

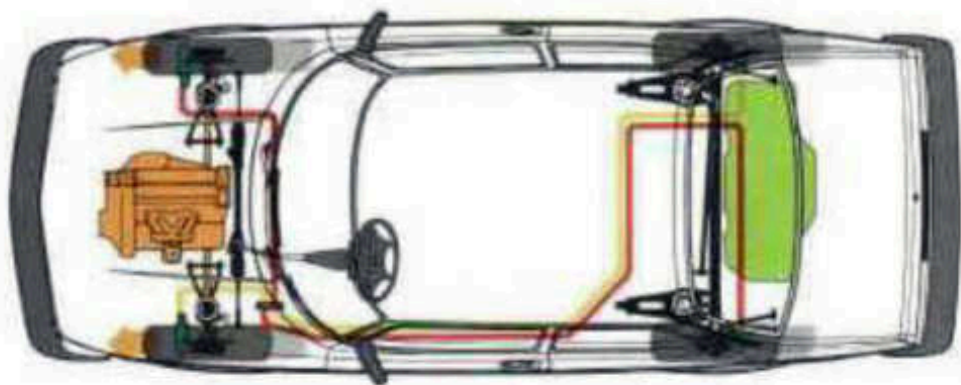
The Saab 90 always carries most of its weight over the driving wheels regardless of whether you're driving alone, or with passengers and luggage. This ensures that the car is safe and that it has good directional stability. Front wheel drive, combined with well balanced weight distribution and the large 15 inch wheels, also ensure that the car travels smoothly on snow and other loose surfaces.

**Carefully designed chassis.** The rack-and-pinion steering in combination with the pivot mounted front springs, and the straight, unsplit, extremely lightweight rear axle all contribute substantially to the Saab 90's excellent directional stability. The rear axle design enables the rear

wheels to follow the irregularities of the road without losing their grip and without risk of changes in track.

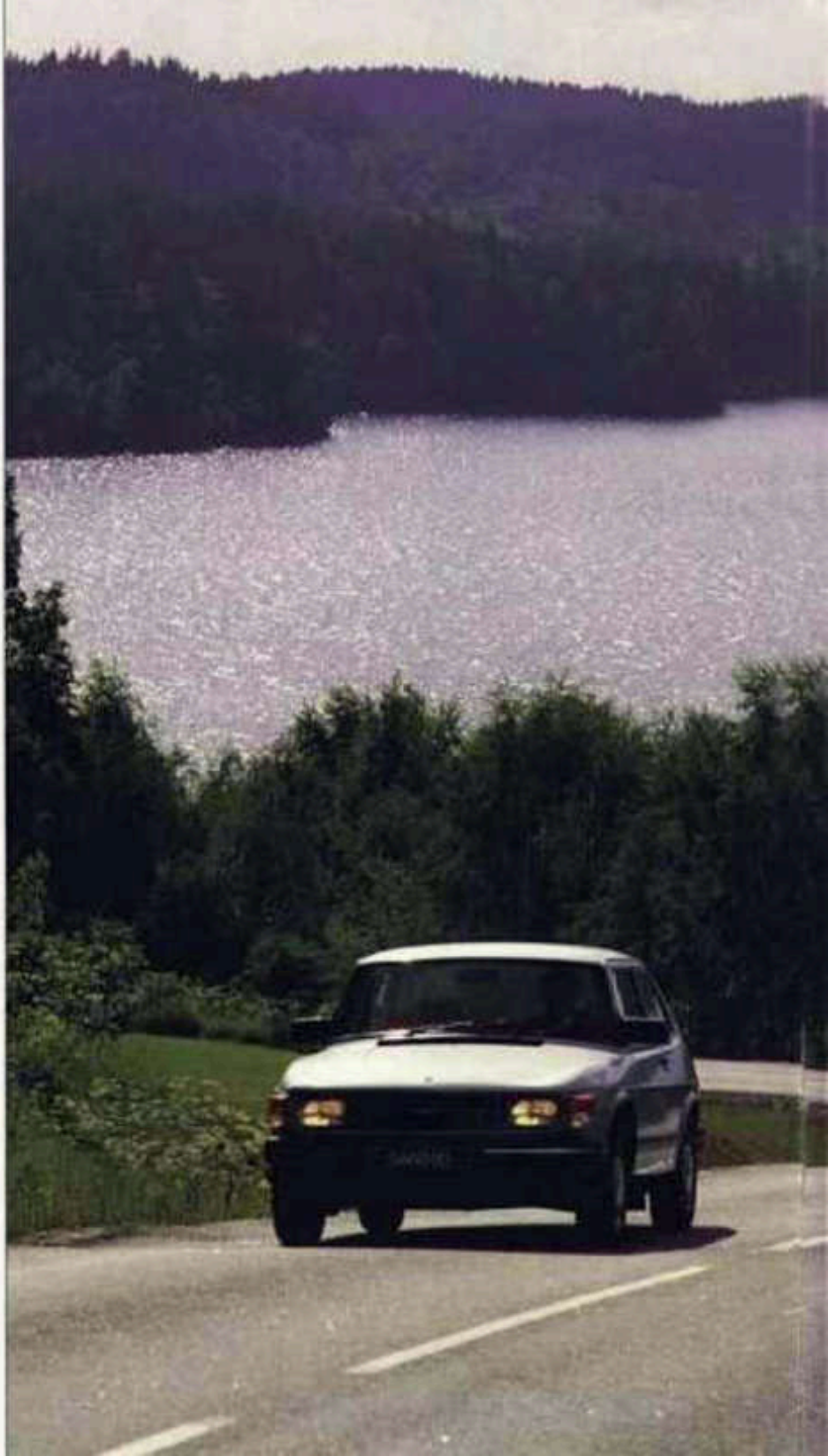
**Disc brakes all round.** Disc brakes on all four wheels give a high braking effect and even with repeated hard braking there is very little risk of fatigue. The brake linings are asbestos-free and have practically twice the life of ordinary brakes. Another important safety detail is the progressive distribution of braking effort which always places the greatest braking effort on the front wheels. This helps counteract rear wheel locking and also minimises the risk of skidding. ■

**All this means that the Saab 90 performs consistently at all times and never surprises you by the way it behaves. You can rely on the Saab 90 under all conditions.**



Front wheel drive □ Perfect weight distribution □ Straight, unsplit, extremely lightweight rear axle □ Disc brakes on all wheels □ Progressive braking effort distribution.

*The Saab 90 is equipped with our tried and tested two litre engine. This engine is characterized by exceptionally good pulling power and acceleration coupled with reliability and a high degree of operating economy.*



## ENGINE WITH PULLING POWER AND FUEL ECONOMY.

**Smooth and responsive.** The engine has a large cylinder capacity of 2 litres, developing 73 kW (100 hp) DIN, together with a short stroke and overhead camshaft.

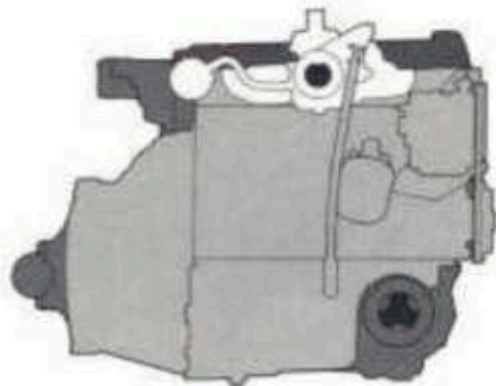
This large cylinder capacity contributes to a high, uniform torque over a wide speed range which gives the engine plenty of power even at low speeds. It also means that you don't need to change gear so often.

Because of its short stroke and overhead camshaft, the engine is particularly responsive to acceleration.

**Efficient use of fuel.** The engine has a high compression ratio which makes for efficient fuel combustion and low fuel consumption. This, along with the five-speed gearbox, and the low resistance low-profile tyres, contributes to reducing fuel costs.

**Easy to service and reliable.** The engine in the Saab 90 is extremely easy to reach. All the vital servicing points can be quickly located under the wide bonnet which comes with a very wide opening angle. See for yourself how easy it is to change fuses and bulbs or to top up engine oil and washer fluid. And then compare it to other cars.

The engine in the Saab 90 has been specifically designed to cope with a severe climate like the Scandinavian winter. The alternator with a power of 930 W, is driven by double belts and ensures that the battery is always fully charged. The breakerless ignition system needs no adjustment, improves starting performance and reduces servicing requirements. And to prevent icing in the carburettor, the engine intake air is heated with thermostatic control. ■



Two-litre cylinder capacity □ Excellent pulling power □ Low fuel consumption □ Easy servicing □ Reliable.

## THE DRIVER AT THE CENTRE.

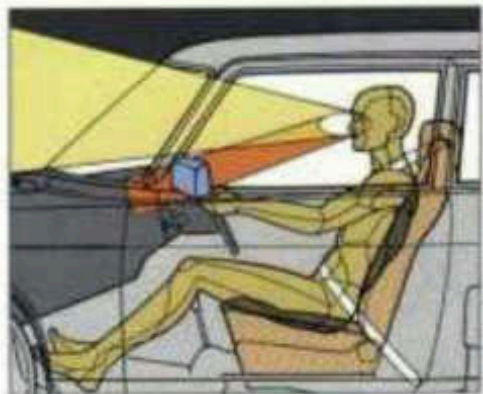
*A good driver will become an even better driver if there's perfect harmony between himself and the car. In the Saab 90 this harmony is highly developed as you can see from the shape and design of the driver's seat which not only gives you comfortable seating but also allows you to read the instruments clearly, and at the same time, reach all the controls without having to take your eyes off the road.*

**Everything within reach.** The driver's seat in the Saab 90 is one of the world's most comfortable car seats. It has an ergonomically correct shape and provides the right amount of support exactly where it's needed. The seat is electrically heated with a thermostatic control. And to give you even greater comfort, the seat can be raised, lowered or tilted according to your needs.

The round instruments are large, easy to read and logically arranged within your normal field of vision. There is a very wide range of instruments including a tachometer as well as a quartz clock, both of which are standard equipment. The instrument lighting is a soothing green that won't dazzle when you're driving at night.

You can reach all the controls quickly and comfortably without having to change your position and without having to fumble, because they're located exactly where you expect them to be. All the controls are illuminated and clearly shaped so they can't be confused in the dark.

**Good visibility all round the car.** The large, curved windscreen, the slim rear roof pillars and the large rear-view mirrors offer the best possible vision in front and excellent visibility to the rear. The outer rear-view mirrors are also adjustable from the inside. ■



*Instruments grouped in the field of vision  
□ Good visibility all round the car □  
Comfortable driver's seat □ All controls within  
easy reach □ Large rear-view mirrors.*





■ Examples of accessories are the centre console and the radio.





*The minute you open one of the wide doors and step inside the Saab 90, you realise that this is a car which offers an exceptional degree of comfort with a wealth of well thought-out details.*

*It's a car that's easy to get in and out of — even from the back seat. The door sills are retracted towards the centre of the car which protects them from dirt and corrosion, and prevents trouser legs from becoming soiled.*

*The front seats are among the most comfortable you'll find in any car. They will support you on long journeys without tiring your back, neck or thighs.*

*The level of comfort in the rear seat of a Saab 90 is comparable to what you would find in a car in a higher price range. Because of the way the rear seat is structured you can sit comfortably even in the centre. What's more, there is no propeller shaft tunnel which affects the seating area.*

*In the Saab 90, velour upholstery comes as standard equipment, and it's just as comfortable in summer or winter.*

*Thorough sound insulation, combined with a fifth gear that reduces engine noise considerably on main roads, make for a very low noise level. One of the many things you can look forward to on long journeys in the Saab 90 is the absence of irritating noise.*



## COMFORTABLE INTERIOR CLIMATE—A QUESTION OF COMFORT AND SAFETY.

*The heating and ventilation system in the Saab 90 has been specially designed to cope with both Scandinavian winters and on hot summer days. A high heating capacity matched with efficient through ventilation keep the windows free of mist and the interior temperature at a comfortable level.*

**Efficient heating and ventilation system.** In the Saab 90 heat is supplied very quickly. Warm or cool air is supplied into the interior through twelve outlets. With separate warm air ducts to the back of the car to make sure that your rear seat passengers keep their feet warm on cold winter days. The through ventilation is highly efficient, with air outlets at the back of the car ensuring that the windows are kept free of condensation.

**Electrically heated driver's seat.** Automatic, electrically controlled heating of the driver's seat is standard equipment in the Saab 90. And this is not just for medical reasons. A cold driver drives less efficiently and his reaction times take longer. Within a few minutes after starting, even before the interior has completely warmed up, the driver will be warm and comfortable. And the temperature is automatically regulated by a thermostat. ■







## ROOMY WHERE IT'S NEEDED—INSIDE.

**Space and light.** Thanks to the large window areas, the interior of the Saab 90 is light and airy. There is plenty of room for passengers, even the tallest adults. One of the advantages of front wheel drive is that there is no propeller shaft tunnel to clutter the foot space for rear seat passengers. Nor are there any wheel housings to restrict rear elbow room. Additional features like pockets on the inside of the doors, a large glove compartment, and storage areas above the dashboard, provide plenty of space for small items.

**Space for holiday packing—and a bit extra.** The Saab 90 has one of the largest luggage compartments for a car in its class which can easily be made even larger if necessary. Just a few simple adjustments can convert this spacious 5-seater into a real "heavy loader". With the rear seat folded down, the flat loading space measures 175 cm in length, with a luggage capacity of 1500 dm<sup>3</sup>. But even in the normal version, with the loading space unaltered, the Saab 90 still has an enormous luggage capacity for long journeys—no less than a full 617 dm<sup>3</sup>.

The luggage compartment is practically designed to ensure that luggage won't get damaged. It's also easy to load and unload. Fabric lined throughout, with no sharp edges. There is additional space under the flat floor for the spare wheel, jack, tools and warning triangle. ■



- Five passengers and a loading space of 617 dm<sup>3</sup>  
□ Two passengers and a loading space of 1500 dm<sup>3</sup> □ Flat floor of luggage compartment  
□ Extra compartment under the floor...

## BUILT-IN SAFETY IN EVERY DETAIL.

*A high level of safety consciousness has always been Saab's trademark. By this we mean both the prevention of an accident, and the minimising of damage should one occur. That's why you will be safe in the Saab 90 should an accident happen involving a frontal collision. Because the self-supporting safety body, coupled with the soft, shock-absorbing material inside the car provide adequate internal protection for all the occupants.*

**High degree of safety.** The front and rear sections of the Saab 90 are designed as deformation zones which gradually decelerate the speed of the car in the event of a collision. The entire body of the car acts as a strong protective cage with well padded surfaces.

**The bulkhead** is an extremely sturdy structure fitted between the engine compartment and the interior. In the event of a collision this prevents the engine from being pushed into the passenger compartment. At knee height below the dashboard, we have also fitted an

energy absorbing shield which reduces the risk of knee injuries in a collision.

**The sides of the doors** are reinforced by strong protective members. Occupants are well protected from them by ample padding.

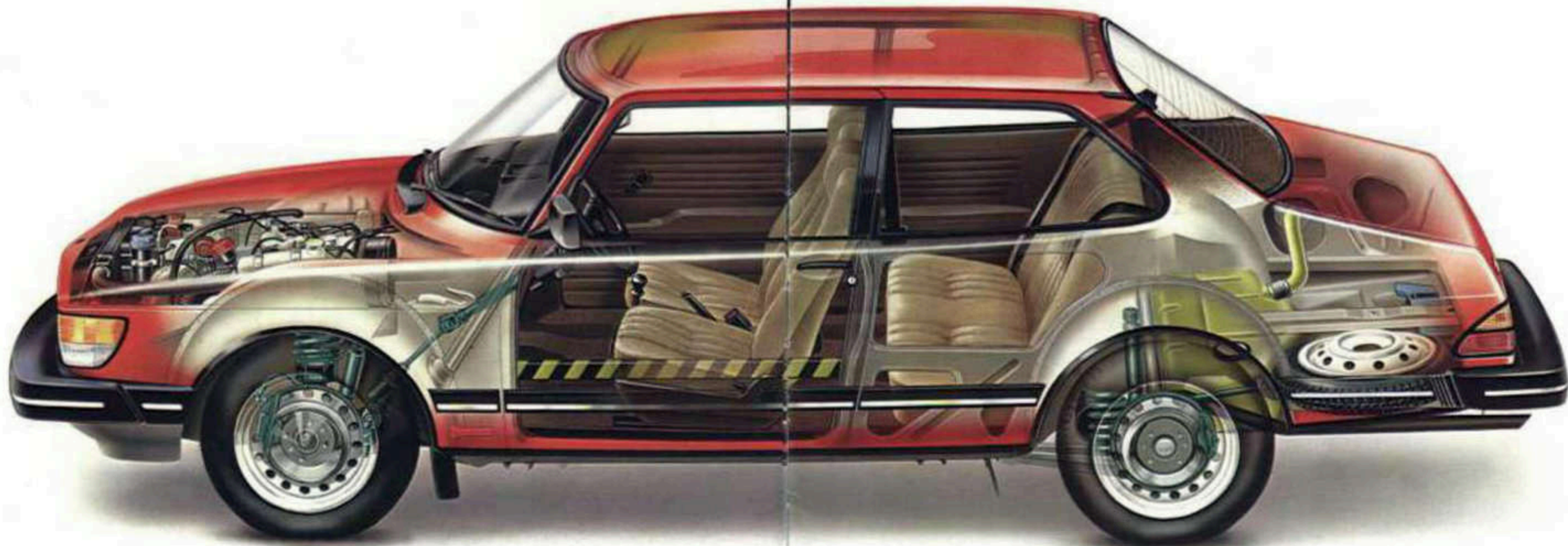
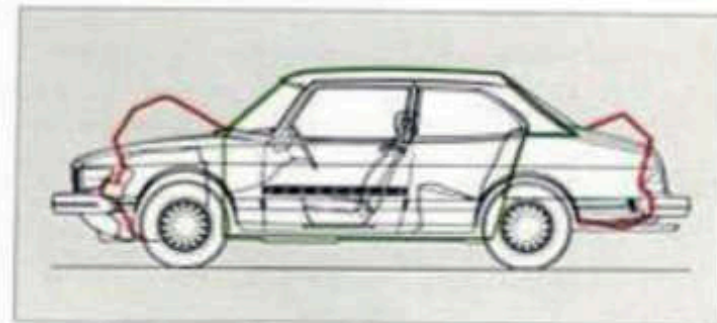
**The head restraints** are constructed around an extra frame which protects the neck vertebrae of occupants from whiplash effects in the event of a collision from the rear.

**The windscreen pillars** must be capable of supporting the entire weight of the car should it overturn. That's why they're made of thick sectional sheet steel, and welded to the wheel housings. They are also well padded on the inside, of course.

**The protective cross member** behind the rear seat absorbs lateral forces in the event of a collision.

**The steering column** is designed to "collapse" when subjected to a high load. A rigorously tested system ensures that the steering column will fold and collapse telescopically if a strong force is exerted from the front.

**The interior roof** is made of thick, shock absorbing material which affords excellent protection against head injuries. ■



## ECONOMICAL FROM TOP TO BOTTOM.

*It isn't only the low fuel consumption that makes the Saab 90 a thoroughly economical car. Just as important is the high degree of operating safety, easy servicing and excellent body rust protection. The Saab 90 also comes with an unusual variety of standard equipment most of which would be supplied at extra cost in other cars.*

**Low fuel consumption.** The engine in the Saab 90 uses fuel extremely efficiently. Combined with the five-speed gearbox and low resistance tyres, it makes for exceptionally good fuel economy. What's more, the revolution counter comes with an economy scale that helps you drive even more economically.

**Low service requirement.** The Saab 90 has several design details that help keep servicing costs down. The engine is very easy to service because most of the vital parts are easy to reach. The breakerless ignition system needs no adjustment, also having an overhead camshaft means that valve adjustments are a rare occurrence and when necessary, are easy to carry out. The brake linings are asbestos free with practically twice the life of conventional linings.

**Self-repairing bumpers.** The bumpers on the Saab 90 protect the body from damage at speeds up to 5 mph (8 km/h), which can save a considerable amount of money.

**Effective rust protection.** Even at the design stage, a great deal of thought went into eliminating corrosion-sensitive spots such as cavities and exposed welded joints. For example we made sure that there are no dirt-collecting pockets on the mudguards. That's why the insides are completely smooth as well as the baseplate.

To back up an already solid basic design, we have developed a completely new paint method in which the body is painted in several stages, with, among other things, an epoxy-based primer (which has very good corrosion-protecting properties) before the top coat is finally applied. To protect the interior parts and the cavities, the body is also painted by electro-immersion. The underbody is treated with a rust preventive: applied generously, for the parts that are exposed to wear in the form of flying stone chips; and thinly, in the cavities and joints. ■



Low fuel consumption.



Low service requirement.



Self-repairing bumpers.



Effective rust protection.