

The 2003 Saturn ION

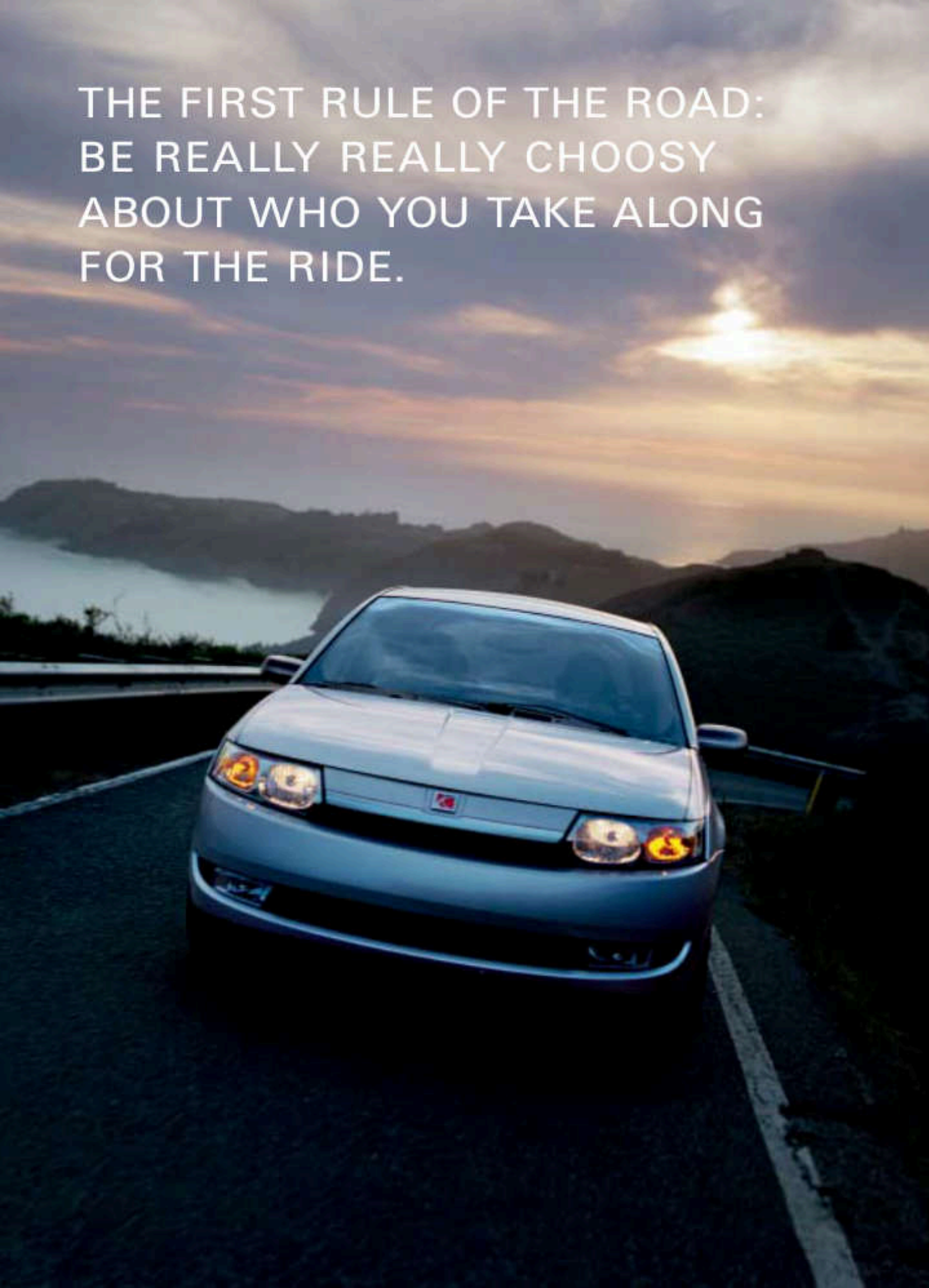


GO >

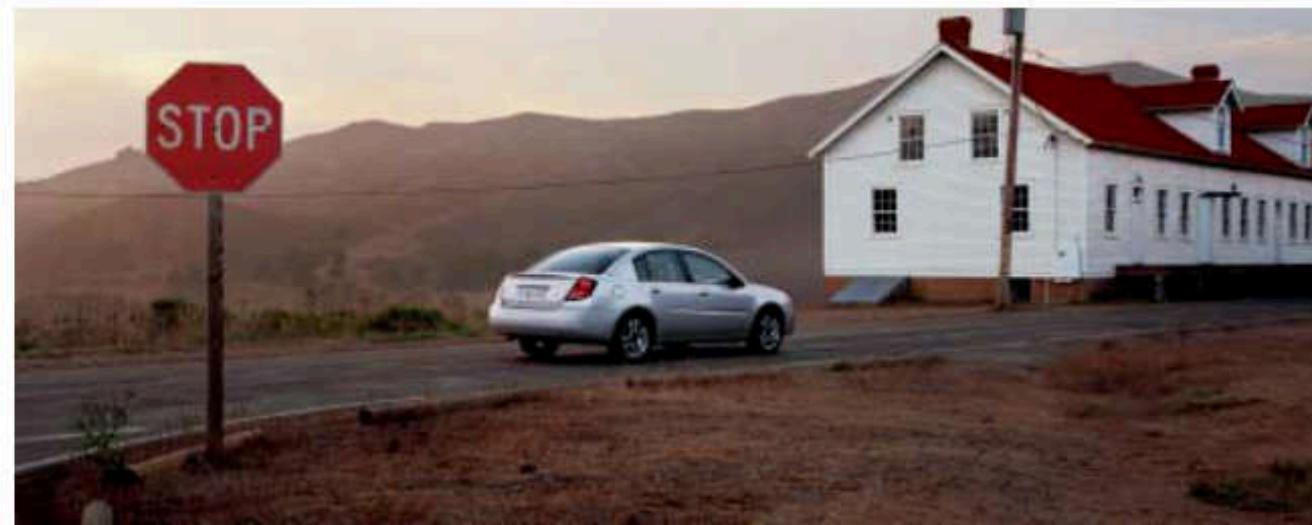


TREAT YOUR ODOMETER LIKE A RÉSUMÉ: THE MILES ADD UP TO WHO YOU ARE.

THE FIRST RULE OF THE ROAD:
BE REALLY REALLY CHOOSY
ABOUT WHO YOU TAKE ALONG
FOR THE RIDE.



It all starts with a simple decision, about which ION is right for you. Is it the sedan or the quad coupe? The streamlined ION-1, the nicely equipped ION-2, the extra-deluxe ION-3? Truly, you can't go wrong, since every ION is outfitted with a decidedly road-hungry 2.2-liter, 140-horsepower, dual-overhead-cam engine. Other standard features include electric power steering, dual power outlets, and a turn signal left-on reminder—thoughtfully designed to prevent the embarrassment of blinking your way down 50 miles of highway. Choose the mid-level ION-2 sedan or quad coupe, and you'll get another generous supply of features, like power door locks, air conditioning, height-adjustable driver's seat and a CD player. The ION-3 models are additionally packed with 16" alloy wheels, cruise control, foglamps, plus power windows, mirrors and door locks with remote keyless entry and alarm.





Quad coupe available in 2003.

A CAR. BUT ALSO, A MEANS OF ESCAPE.

Let's talk about the unbridled joy that comes with having your own ION, the sheer freedom of it. A single set of keys can take you from wherever you are, to places you've never been. And because the ION is generous on space, you can always bring a couple of friends along for the ride. Built to be roomy, powerful, and easy to maintain, the ION is the key to an ever-expanding collection of good driving memories. Its engine is designed to be quiet enough to allow all those life-changing conversations the road seems to inspire, but if you listen closely, you can hear it say *keep driving keep driving keep driving.*



The quad coupe's dual rear access doors and fold-flat front passenger seatback make it easy to load up.

FIVE ENCORES AND STILL COUNTING.

IT'S TIME TO LEAVE THE CROWD BEHIND.

It's half-past super late and you have to get up on the early side.

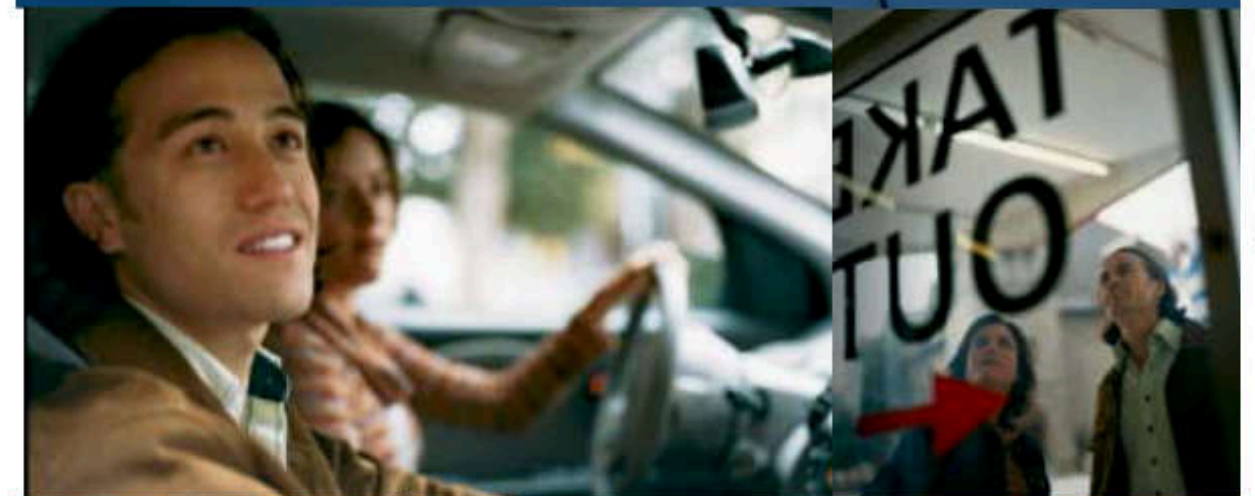
But since when does responsibility get the final say?

Ringing ears and restless mind,
start scanning the streets for a place to absorb the city quiet.

Stop for burgers and fries, ambrosia after a long night.

Back home, car in the driveway, head on the pillow, say goodnight.

Another episode of life.





It's true: Calories don't count when you're on the road.

DRIVE A COMFORTABLE CAR.
EVERYONE KNOWS UNCOMFORTABLE PASSENGERS GET MIGHTY CRANKY.

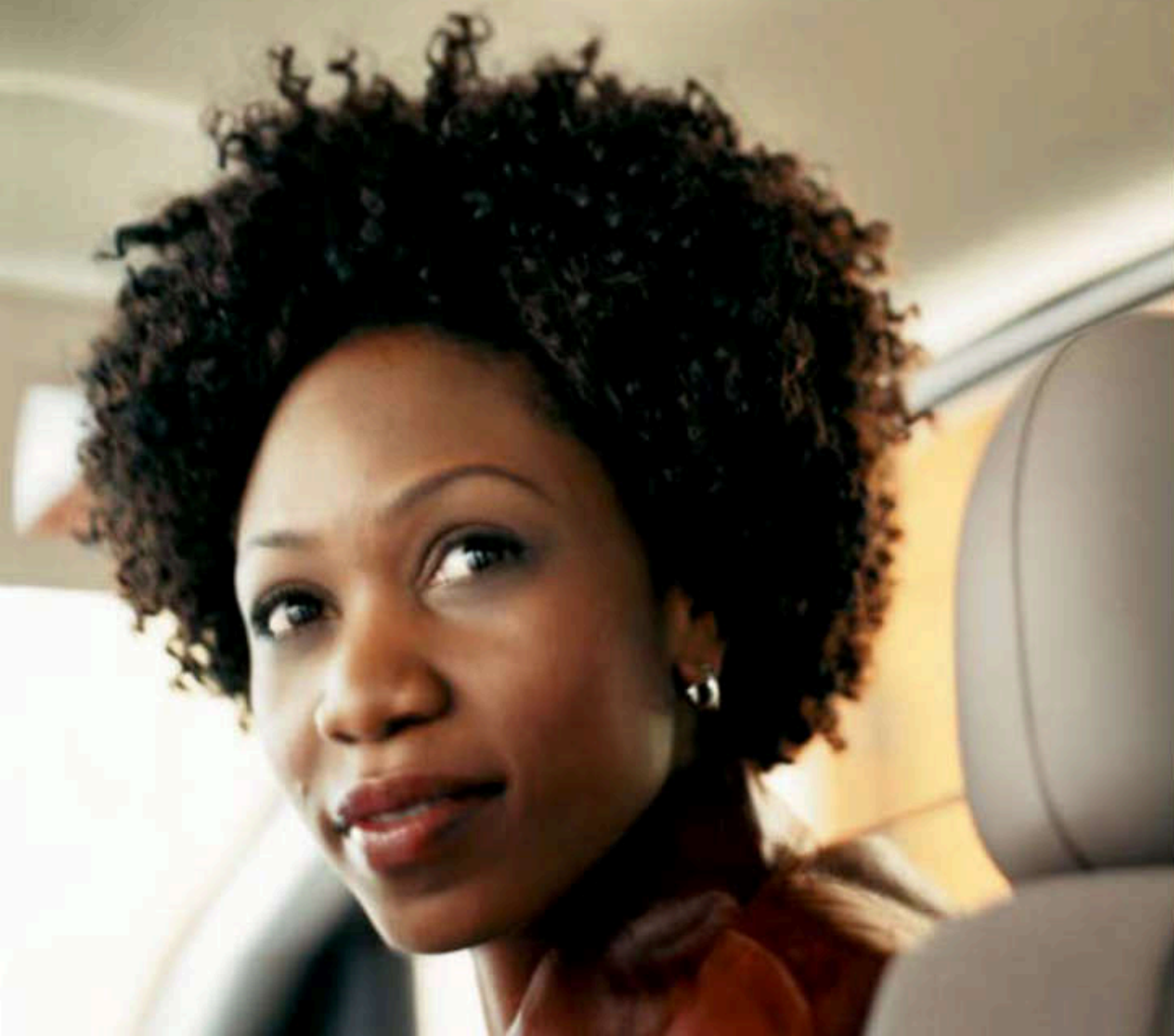
Ergonomically designed seating for all, with raised theater seats in back for a better view. Available air conditioning with built-in dust and pollen filters. Equal access to quality stereo sound, with the option of a six-disc, in-dash CD changer.² Simply put, the ION is democratically designed, to be welcoming to both driver and passengers. ³Not available on ION-1.



Leather Appointments available only on ION-1.

IS IT A FUN CAR THAT'S SURPRISINGLY ROOMY? OR A ROOMY CAR THAT'S SURPRISINGLY FUN?

In some ways, the ION seems to defy the laws of logic. After all, who'd think that the sporty quad coupe could hold a bike, one of those big exercise balls, or even an eight-foot-long kayak? But it can, thanks to the unique combination of dual rear access doors, split fold-down rear seatbacks and fold-flat front passenger seatback. In addition to split fold-down rear seatbacks, the ION sedan also happens to have the largest trunk of any other car in its class.¹ Adding to the general spaciousness is the ION's center-mounted instrument cluster. Moving all the gauges from their usual place allowed us to create a smaller, sportier steering wheel, which makes it easier to get in and out of the driver's seat. The bonus: when you adjust the steering wheel, it's for comfort alone.



Other tasty, optional morsels: Leather Appointments, power sunroof,² auto-dimming mirror with digital temperature and compass displays, and the Saturn Advanced Audio System with 160-watt amplifier and six premium speakers.³



¹Comparison based on 2003 competitive data available at time of printing. ²Not available at the start of production. ³Features not available on ION+I. See page 33 for details.

FOLLOW THE MAP ONLY TO THE DEGREE THAT YOU FEEL LIKE IT.

Spontaneity taps you on the shoulder and announces, it's time to go.

Call your fellow-adventurers, promise stacks of memories for their mental in-boxes.

Pile in the car, find the nearest on-ramp,

and put some miles between you and your front door.

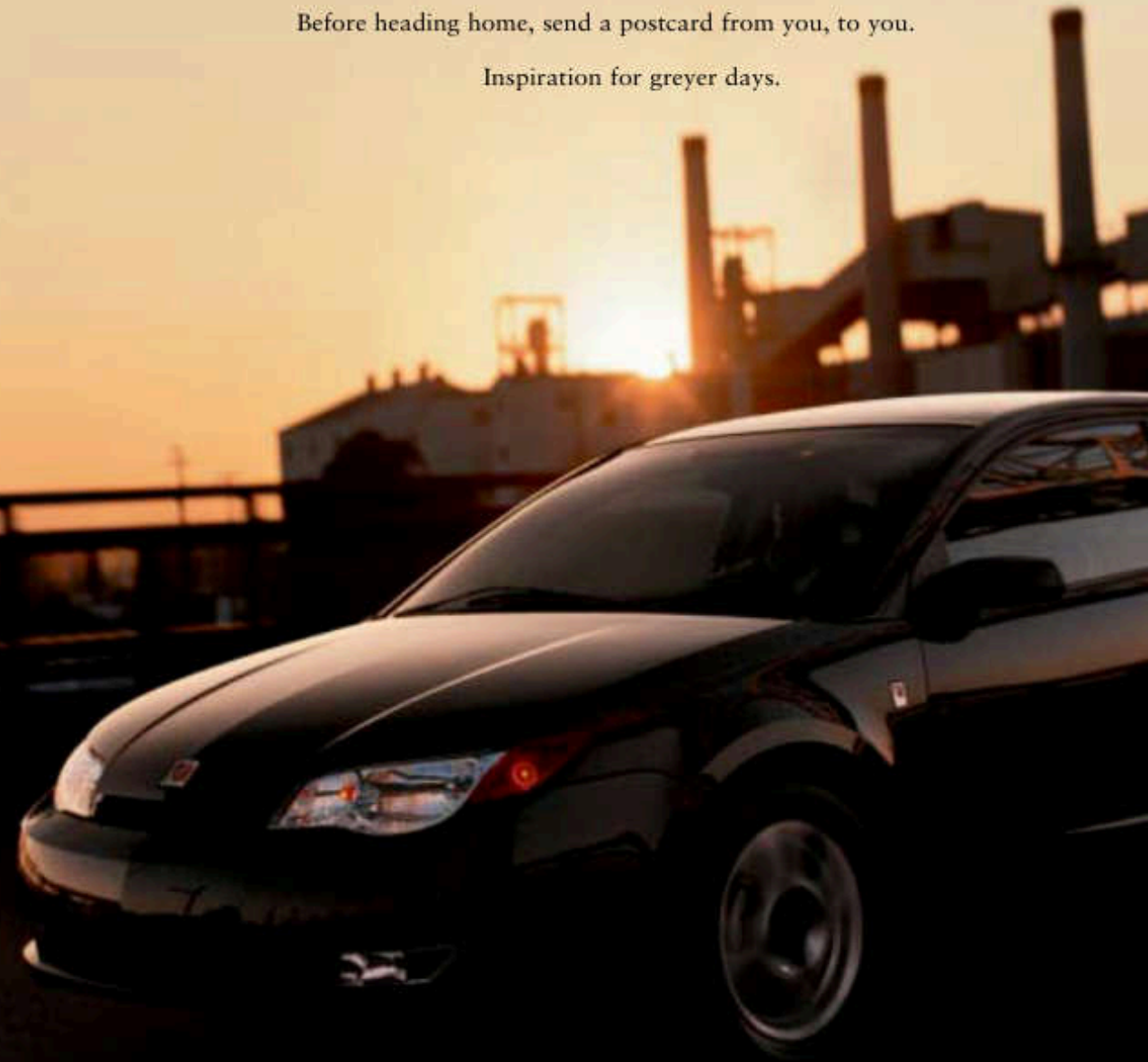
Arrive at the boardwalk and ride the coaster, flirt with whoever's in charge of Skee-Ball,[®]

get your fingers sticky with cotton candy.

Head for the beachside parking lot, watch the sunset—it's okay to be corny about it.

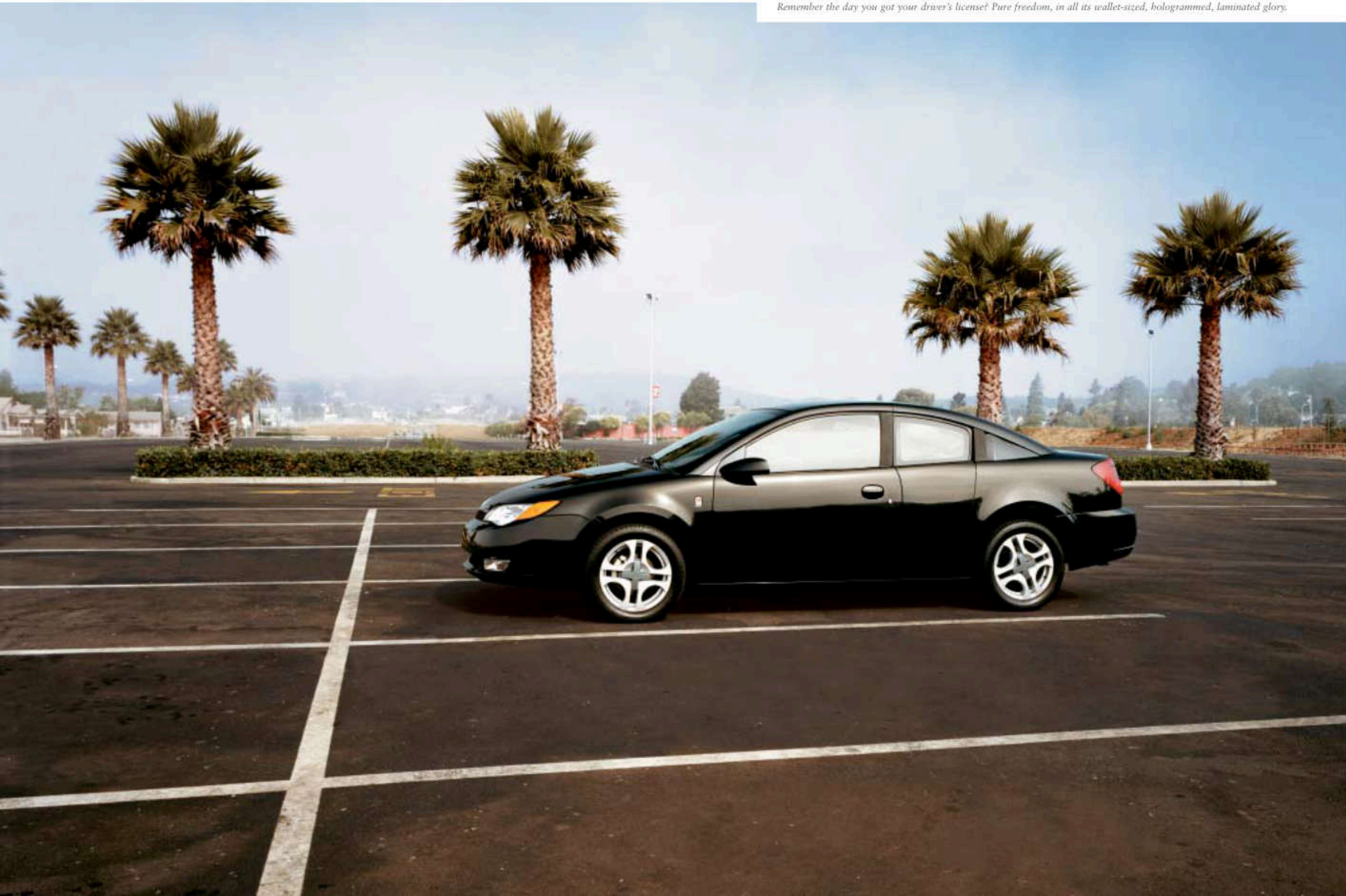
Before heading home, send a postcard from you, to you.


Inspiration for greyer days.



On the road to Santa Cruz 7AM

Remember the day you got your driver's license? Pure freedom, in all its wallet-sized, hologrammed, laminated glory.

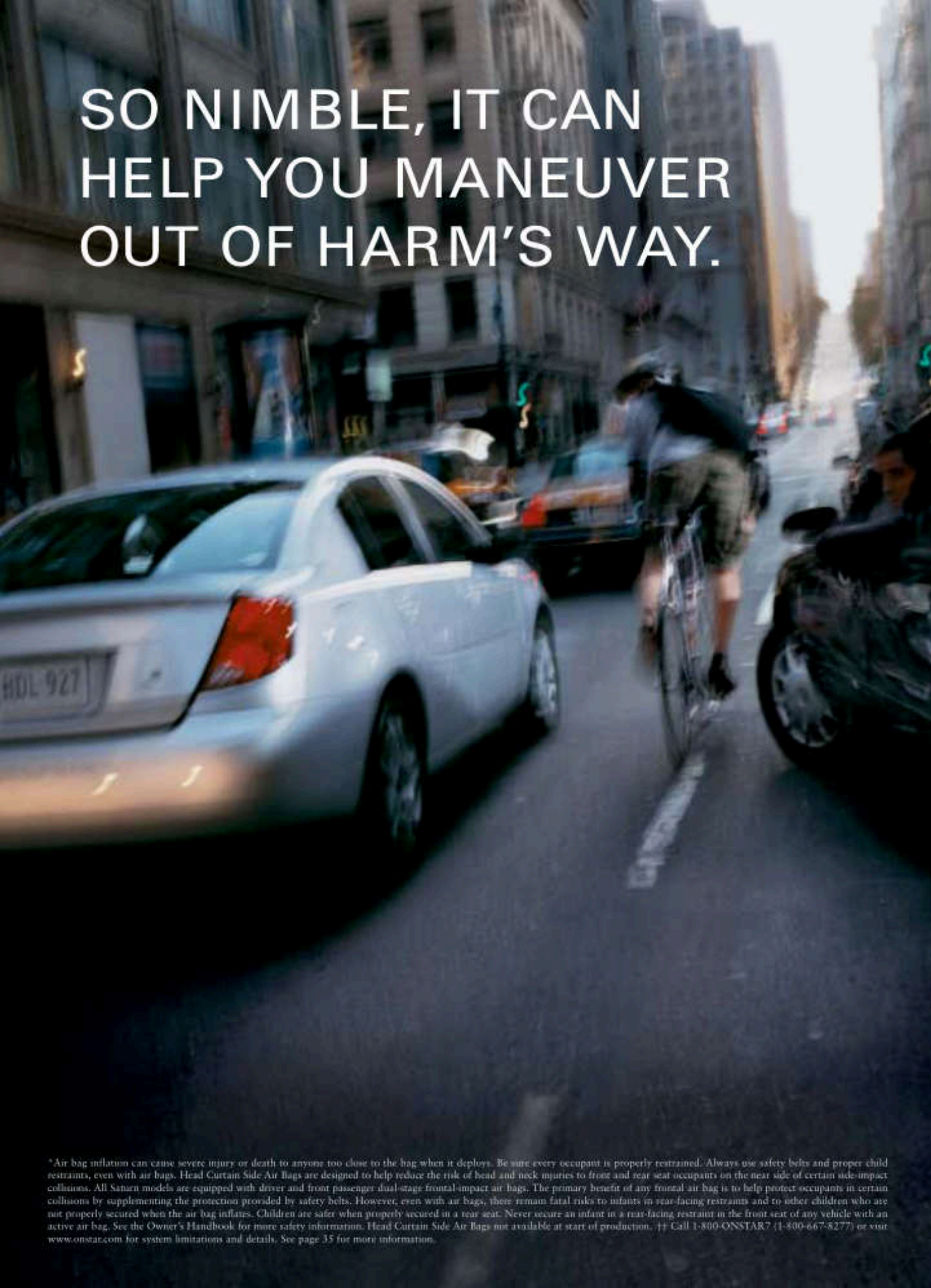




THE ION IS A
ROAD-LOVING CAR.
IT CRAVES ASPHALT
AS INTENSELY AS
WE CRAVE OXYGEN.

You can park it, but the ION is infinitely happier pushing toward the highway. And that's not just because there's a 140-horsepower engine under its hood. It's also how the engine works in tandem with the standard German-engineered five-speed manual transmission, allowing you to optimize control for an all-out feel for the road. If you prefer an automatic, the sedan is one of the few cars in its class to offer an optional five-speed transmission, which provides smooth, intuitive shifting on fast-moving freeways and winding mountain passes. Meanwhile, the quad coupe has an optional VTI variable transmission, which allows genuinely seamless acceleration. Every ION is additionally equipped with front and rear stabilizer bars for a crisp, sporty ride. Oh, and since speed often comes with bumps, the ION's front and rear suspension systems have been specially designed to keep passenger jouncing to a minimum.

SO NIMBLE, IT CAN
HELP YOU MANEUVER
OUT OF HARM'S WAY.



The best traveling companions are the ones who point you toward adventure, but help you steer clear of trouble. Hence the ION's many intelligent safety and security features. Like every Saturn we build, the ION has a precision-welded steel spaceframe. The front and rear crumple zones are designed to absorb collision energy and direct it away from the passenger compartment. In addition to the standard dual-stage front air bags, Head Curtain Side Air Bags* are also available. As for less welcome driving conditions, the optional Anti-lock Braking System with Traction Control helps you maintain steering control on wet and icy roads. To keep visibility high, the ION*3 comes with headlights that automatically come on when your windshield wipers do. Of course, life is utterly unpredictable, which is where the optional OnStar® Communications System with one year Safe & Sound Service Plan†† comes in handy. Whether you run short on gas or lock the keys inside the car, OnStar operators are there to answer your call.

*Air bag inflation can cause severe injury or death to anyone too close to the bag when it deploys. Be sure every occupant is properly restrained. Always use safety belts and proper child restraints, even with air bags. Head Curtain Side Air Bags are designed to help reduce the risk of head and neck injuries to front and rear seat occupants on the near side of certain side-impact collisions. All Saturn models are equipped with driver and front passenger dual-stage frontal-impact air bags. The primary benefit of any frontal air bag is to help protect occupants in certain collisions by supplementing the protection provided by safety belts. However, even with air bags, there remain fatal risks to infants in rear-facing restraints and to other children who are not properly secured when the air bag inflates. Children are safer when properly secured in a rear seat. Never secure an infant in a rear-facing restraint in the front seat of any vehicle with an active air bag. See the Owner's Handbook for more safety information. Head Curtain Side Air Bags not available at start of production. †† Call 1-800-ONSTAR7 (1-800-667-8277) or visit www.onstar.com for system limitations and details. See page 35 for more information.

WINDOWS DOWN, STEREO UP.

RESPONSIBILITY WILL LOOSEN ITS GRIP EVENTUALLY.

Pour some cereal. Out of milk, set out for the store.

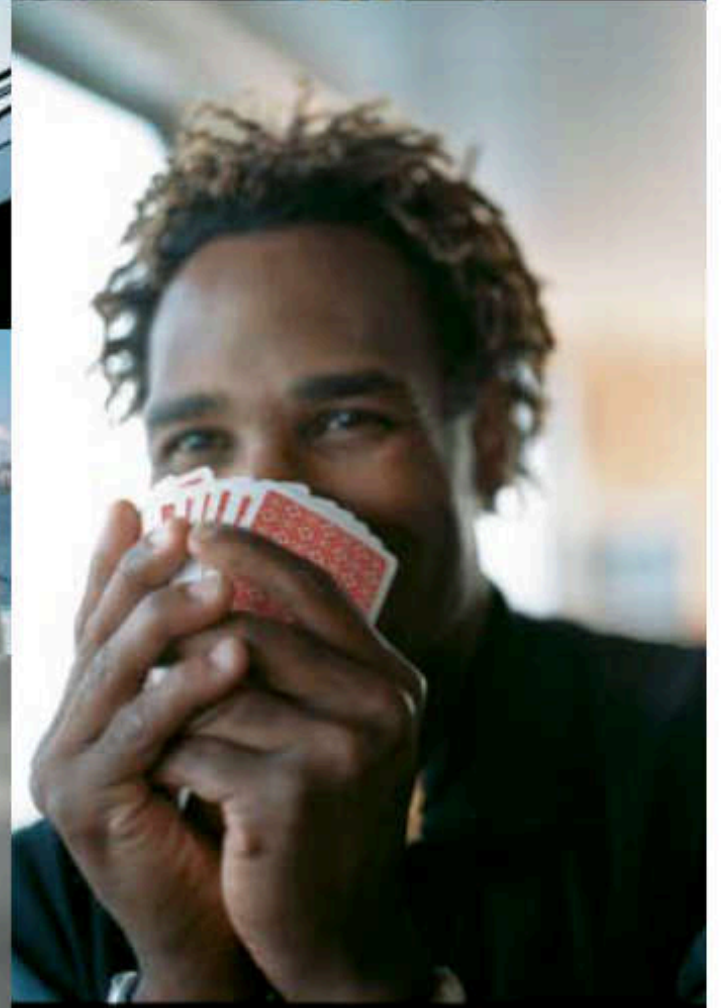
In the mood for a drive, pick up some friends and push out of the neighborhood,

through the city, as close to the water as the road allows.

Reach the limits of land, but decide to keep moving, take the car ferry, see what's on the other side.

Treat yourselves to snack bar coffee, juice, cinnamon rolls.

All part of a balanced breakfast.



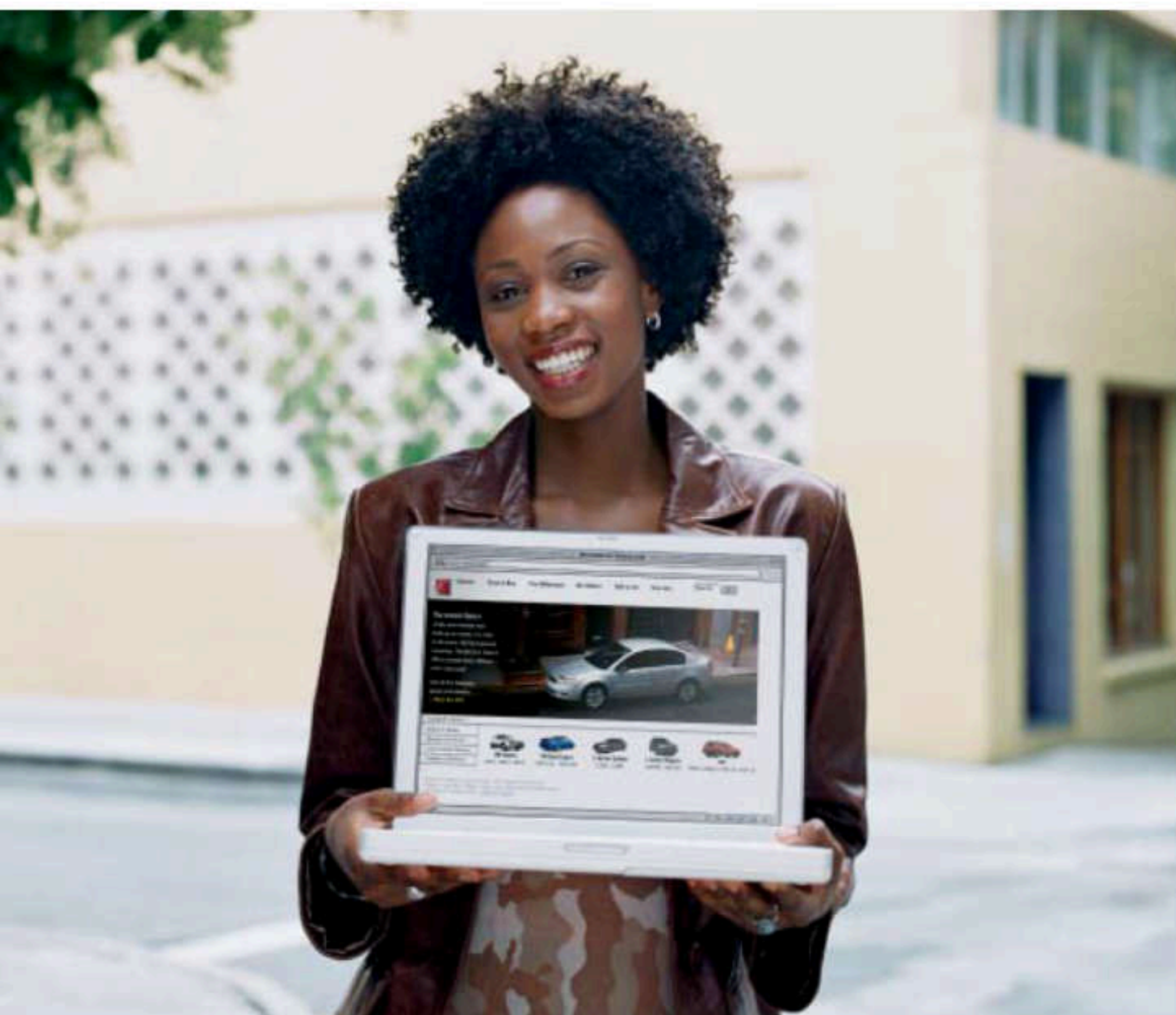


You never know when adventure is going to knock on your door and ask you to take it for a ride.

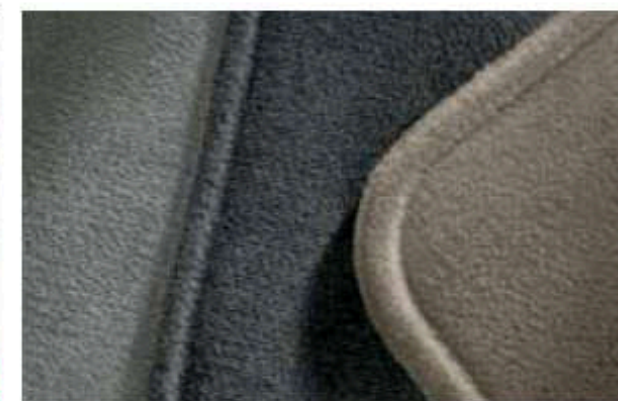
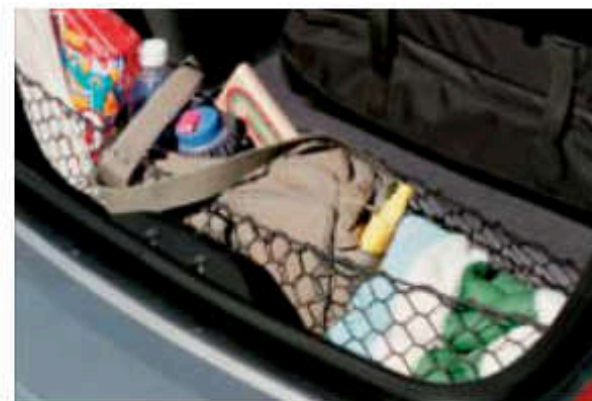
BUYING AN ION. LET THE FUN BEGIN.

Pretty exciting, the thought of treating yourself to a hefty dose of that new car smell. And the one thing we don't want is to turn your ION shopping experience into a bad trip. So feel free to ask all about the engine, the features, the financing, or even the easiest way back to the freeway. We'll give you straight answers, the kind that don't make you feel like we're wasting your time with some kind of runaround. After all, we both want the same thing—the perfect match between you and your car. Maybe that good attitude is how Saturn got the top award in two separate J.D. Power and Associates studies—#1 Nameplate in Sales Satisfaction and #1 Nameplate in Customer Satisfaction With Dealer Service.¹

Sometimes, your subconscious will tell you that it's time to buy a car. For instance, when you find yourself inexplicably drawn to online car sites. In which case, you might want to check out saturn.com. You'll find in-depth information about all our vehicles, right down to the sticker price.



Cargo net, floor mats, spoiler, ski rack: the ION is available with lots of different accessories. For a complete list of retailer-installed accessories, check saturn.com.



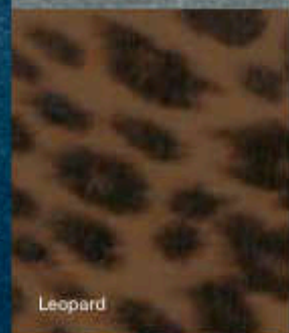
¹J.D. Power and Associates 2002 Sales Satisfaction Study.SM Study based on 39,315 consumer responses. J.D. Power and Associates 2002 Customer Service Satisfaction Study.SM Study based on 49,830 consumer responses. www.jdpower.com.



Blue Bubble



Brushed Steel



Leopard



Carbon Fiber

BE SUBTLE. OR IF YOU PREFER, TOTALLY NOT SUBTLE AT ALL.

Some people like beaded seat covers. Others dream about a full-on shag interior. How you choose to make an ION your own is entirely up to you, but your Saturn retailer can help you get a head start with optional personalized exterior roof rails, interior trim kits and key fobs.² Available patterns are shown above and can be combined with any exterior color.³ Not available at start of production.



Silver



Black



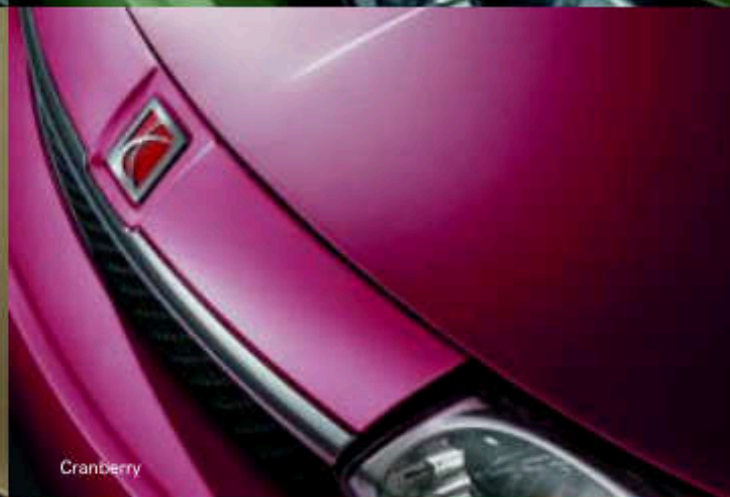
Silver Blue



Medium Green



Gold



Cranberry



White



Bright Blue²

YOU'LL BE SPENDING A LOT OF TIME TOGETHER. BETTER GET THE COLOR YOU WANT.

EXTERIOR COLOR	STANDARD ROOF RAIL ACCENT COLOR	STANDARD CLOTH			OPTIONAL LEATHER ION-3
		ION-1	ION-2	ION-3	
Black	Dark Grey	Grey	Grey, Tan	Grey, Tan	Grey, Tan
Bright Blue ²	Dark Grey	—	Grey, Tan	Grey, Tan	Grey
Cranberry	Dark Grey	Grey	Grey, Tan	Grey, Tan	Tan
Gold	Silver	—	Tan	Tan	Tan
Medium Green	Dark Grey	—	Tan	Tan	Tan
Silver	Silver	Grey	Grey	Grey	Grey
Silver Blue	Silver	—	Grey	Grey, Tan	Tan
White	Silver	Grey	Grey, Tan	Grey, Tan	Grey

²Not available at start of production.



Sedan specifications only. Quad coupe specifications available in 2003.

SEDAN SPECIFICATIONS

ENGINE & TRANSMISSION

Engine	2.2-liter, DOHC, 16-valve, inline-4, twin balance shafts, alloy cylinder head and block
Horsepower	140 @ 5,800 rpm
Torque (ft. lbs.)	145 @ 4,400 rpm
Valvetrain	4 valves per cylinder, steel timing chain
Fuel	Unleaded 87-octane
Transmission (standard)	5-speed manual
Transmission (optional)	5-speed automatic

CHASSIS

Drivetrain	Front-engine / front-wheel drive
Body construction	Steel spaceframe with front and rear crumple zones and side impact protection
Exterior panels	Polymer front fenders, door panels, rear quarter-panels, and bumper fascias; galvanized steel hood, roof, and trunklid
Bumpers	Five-mph, front and rear
Front suspension	Independent strut-type with stabilizer bar
Rear suspension	Semi-independent torsion-beam with stabilizer bar
Sport-tuned steering	Electric power steering with variable assist, tuned for each model
Brakes	Power-assisted front vented disc/rear drum
Exhaust	Full stainless steel

EXTERIOR DIMENSIONS (in.)

Length	184.5
Wheelbase	103.2
Width	67.2
Height	57.4
Track, front	58.8
Track, rear	58.4

INTERIOR DIMENSIONS (front/rear in.)

Legroom	42.2 / 33.3
Headroom	40.0 / 37.0
Shoulder room	53.7 / 52.8
Hip room	49.5 / 49.6

EPA MILEAGE ESTIMATES (city/highway mpg)**

Manual transmission	26 / 33
Automatic transmission	24 / 32

WEIGHTS & CAPACITIES

	ION-1	ION-2	ION-3
Curb weight, manual / automatic (lbs.)	2,653 / 2,728	2,686 / 2,760	2,729 / 2,802
EPA passenger volume (cu. ft.)	93.0	93.0	93.0
EPA cargo-area volume (cu. ft.)	14.7	14.7	14.7
Fuel capacity (gal.)	13.5	13.5	13.5
Passenger seating	5	5	5

TIRES

	ION-1	ION-2	ION-3
Size	P185 / 70R14	P195 / 60R15	P205 / 55R16
Wheels	14" steel	15" steel, 15" optional alloy	16" alloy

Vehicles in brochure are shown with optional equipment and/or retailer-installed accessories. Quad coupe specifications available in 2003.

**Actual mileage may vary with driving conditions—use for comparison only. †Requires Convenience Package. Not available at start of production. ††Head Curtain Side Air Bags are designed to help reduce the risk of head and neck injuries to front and rear seat occupants on the rear side of certain side-impact collisions. Always use safety belts and proper child restraints, even with air bags. Children are safer when properly secured in a rear seat. See the Owner's Handbook for more safety information. Head Curtain Side Air Bags not available at start of production.

†††Call 1-800-ONSTAR7 (1-800-667-8277) or visit www.onstar.com for system limitations and details. Requires CD/cassette or six-disc CD changer and Convenience and Travel Packages.

SEDAN FEATURES & OPTIONS

EXTERIOR FEATURES

	ION-1	ION-2	ION-3
Dual power exterior mirrors	—	Δ	•
Foglamps	—	—	•
Power sunroof [†]	—	○	○
Rear spoiler	—	○	○

COMFORT & CONVENIENCE FEATURES

Air conditioning with dust and pollen filter	○	•	•
Adjustable steering column	•	•	•
Retained accessory power	•	•	•
Rear window defogger with manual shutoff and timed reset	•	•	•
Battery run-down protection for interior lighting and cargo area	•	•	•
Dual visor vanity mirrors	•	•	•
Reclining front bucket seats with open adjustable headrests	•	•	•
Height-adjustable driver's seat	—	•	•
Front passenger seatback storage pocket	—	•	•
Leather Appointments: leather-trimmed seats, gearshift knob, and steering wheel	—	—	○
Storage compartments: three in-dash bins, front and rear door map pockets	•	•	•
Center console with open storage bin and dual cupholders	•	•	—
Center console with adjustable armrest, enclosed storage, dual front and rear cupholders	—	—	•
Three-way dome light with delayed shutoff feature, theater dimming, and cargo-area light	•	•	•
Dual 12-volt power outlets	•	•	•
Power door locks with anti-lockout, delayed locking, and programmable auto lock / unlock	—	Δ	•
Power windows with driver express-down and rear seat lockout feature	—	Δ	•
Remote hood and trunk release	•	•	•
60/40-split folding rear seatbacks	•	•	•
Secure trunk feature with locking seatbacks and trunk release disable	•	•	•
Carpeted front and rear floor mats	○	○	○
Warning chimes for headlights-on, key-in-ignition, parking-brake-on, and turn signal left-on reminder	•	•	•

SAFETY & SECURITY

Anti-lock Braking System with Traction Control	○	○	○
Engine-immobilizing anti-theft system	•	•	•
Daytime running lights	•	•	•
Automatic headlights	—	—	•
Dual-stage driver and front passenger air bags*	•	•	•
Head Curtain Side Air Bags*	○	○	○
Three-point safety belts for all seating positions	•	•	•
Height-adjustable front shoulder belts with pretensioners and energy-absorbing retractors	•	•	•
Lower Anchorages and Top Tethers for Children (LATCH) in all rear seating positions	•	•	•
Child-security rear door locks	•	•	•
Emergency Trunk Release handle	•	•	•
OnStar® Communications System with one year Safe & Sound Service Plan ^{††}	—	○	○

AUDIO SYSTEMS

AM/FM stereo with four extended-range speakers	•	—	—
AM/FM stereo with CD player and four extended-range speakers	○	•	—
AM/FM stereo with CD/cassette player and four coaxial speakers	○	○	•
AM/FM/cassette stereo with six-disc, in-dash CD changer and four coaxial speakers	—	○	○
Saturn Advanced Audio System with 160-watt external amplifier and six premium speakers (Requires CD/cassette or six-disc CD changer and Convenience Package)	—	○	○

INSTRUMENTATION

Center-mounted gauge cluster, black face with white graphics	•	•	—
Center-mounted gauge cluster, silver face with black graphics	—	—	•
LCD message center including low-fuel indicator and oil-life monitor	•	•	•

OPTION PACKAGES

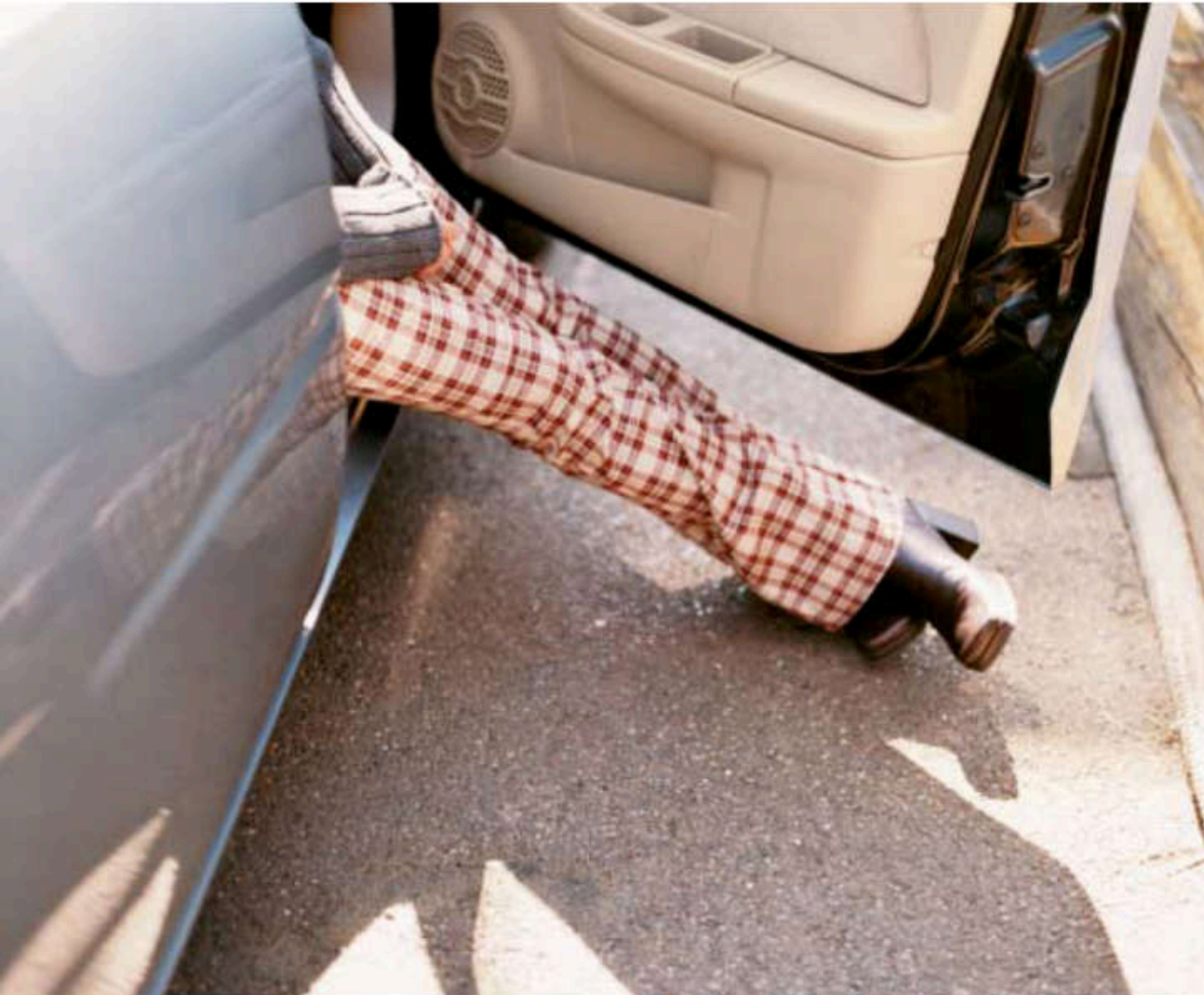
Convenience Package: power windows and exterior mirrors, cruise control, and remote keyless entry with alarm activation, panic/alert mode, and power trunk release	—	○	•
Travel Package: driver and passenger map lights, auto-dimming inside rearview mirror with outside temperature and compass display	—	○	○

• = standard ○ = optional Δ = included with optional Convenience Package — = not available

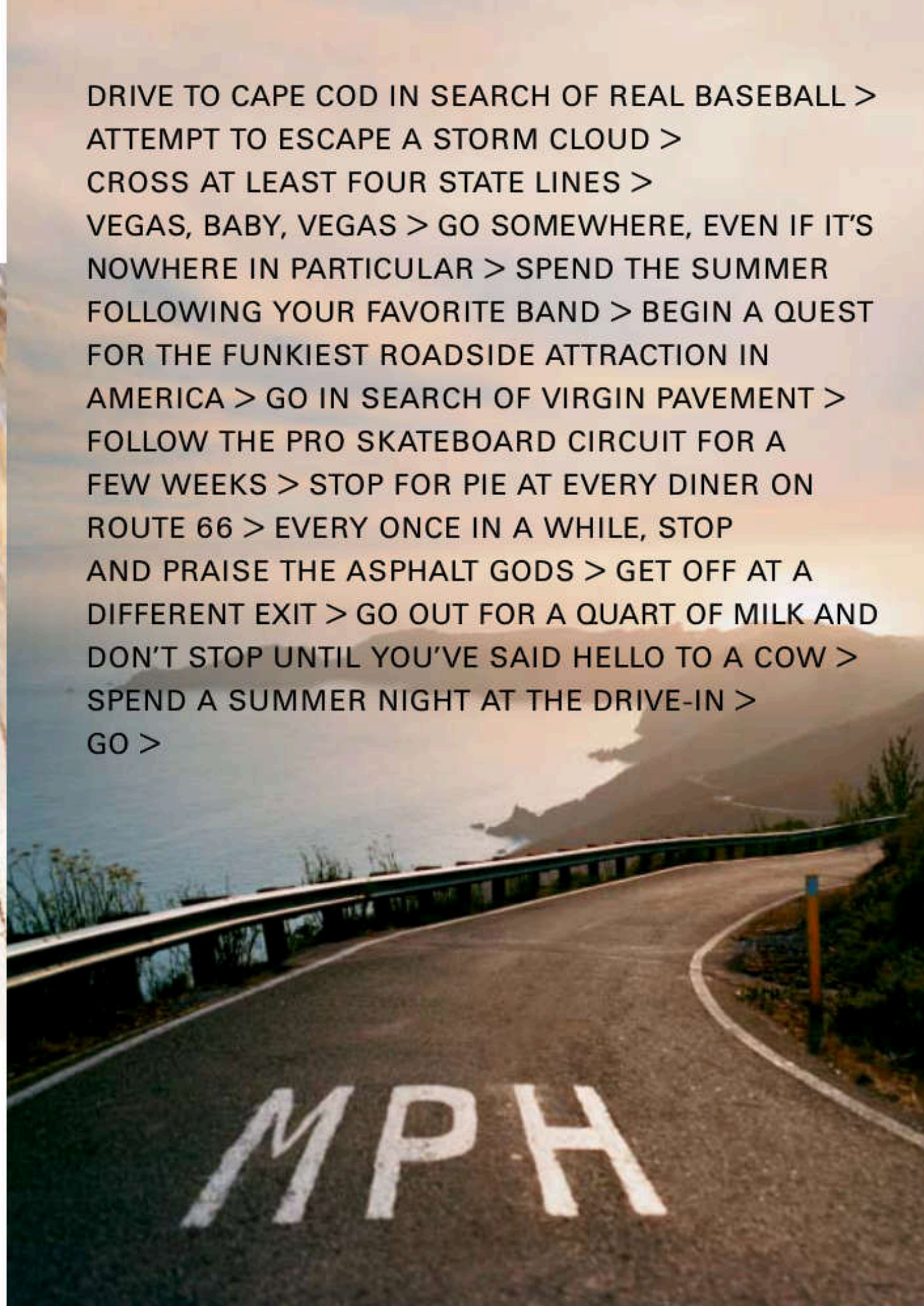


THE BEST PART ABOUT WASHING OFF PAST MILES, IS THAT IT LEAVES ROOM FOR FUTURE ONES.

*For every stop, there's a go.
For every road that leads you away
from home, there's one to bring you
back. And for every ION we build,
there's someone who's ready to round
up their friends and go for a drive,
ready to start creating amazing
joyful crazy memories. Keep driving.
Keep searching for places you've
never been. Keep looking for
adventure in places you'd never
expect to find it. The all-new ION.
Have fun out there.*



DRIVE TO CAPE COD IN SEARCH OF REAL BASEBALL >
ATTEMPT TO ESCAPE A STORM CLOUD >
CROSS AT LEAST FOUR STATE LINES >
VEGAS, BABY, VEGAS > GO SOMEWHERE, EVEN IF IT'S
NOWHERE IN PARTICULAR > SPEND THE SUMMER
FOLLOWING YOUR FAVORITE BAND > BEGIN A QUEST
FOR THE FUNKIEST ROADSIDE ATTRACTION IN
AMERICA > GO IN SEARCH OF VIRGIN PAVEMENT >
FOLLOW THE PRO SKATEBOARD CIRCUIT FOR A
FEW WEEKS > STOP FOR PIE AT EVERY DINER ON
ROUTE 66 > EVERY ONCE IN A WHILE, STOP
AND PRAISE THE ASPHALT GODS > GET OFF AT A
DIFFERENT EXIT > GO OUT FOR A QUART OF MILK AND
DON'T STOP UNTIL YOU'VE SAID HELLO TO A COW >
SPEND A SUMMER NIGHT AT THE DRIVE-IN >
GO >



Moneyback guarantee: All vehicles from Saturn include our 30-day/1,500-mile moneyback guarantee, so you can buy with confidence. If you are not completely satisfied, for any reason, just return the vehicle to your Saturn retailer within 30 days of delivery or 1,500 miles (whichever comes first) to select another or to receive a full refund. See retailer for limitations and restrictions. Warranty: 3 years/36,000 miles (whichever comes first, except normal maintenance). No deductible. Original equipment tires are also covered under this warranty. If you want to know more about the Saturn "Bumper to Bumper" New Car Limited Warranty, please visit your Saturn retailer. 24-Hour Roadside Assistance: Every Saturn owner is automatically enrolled in Saturn's 24-Hour Roadside Assistance Program. If you experience a problem, you can dial toll-free 1-800-553-6000, and Saturn advisors will arrange towing service or other assistance. If the problem is covered under warranty, Saturn will pay for the cost of the towing service. Coverage begins at the moment of purchase and continues throughout the term of your car's "Bumper to Bumper" New Car Limited Warranty. Owner Assistance: If you need help or just have a question about your Saturn, you can call your retailer and ask for the Customer Assistance Liaison, who will personally handle the request. You can also contact Saturn directly by calling our Customer Assistance Center at 1-800-553-6000 or by sending an e-mail by going to saturn.com.

saturn.com

©2002 Saturn Corporation. All Rights Reserved. Saturn reserves the right to make changes at any time, and without notice, in prices, colors, materials, equipment, specifications, models and availability. ION models are equipped with engines and transmissions produced by different operating units of GM, its subsidiaries or suppliers to GM worldwide.

IONPROD03MY

It's different in a Saturn.®



THIS IS THE 2003 SATURN[®] ION[™] QUAD COUPE.

Features, Options and Specifications



QUAD COUPE SPECIFICATIONS

ENGINE & TRANSMISSION

Engine	2.2-liter, DOHC, 16-valve, inline-4, twin balance shafts, alloy cylinder head and block
Horsepower	140 @ 5,800 rpm
Torque (ft. lbs.)	145 @ 4,400 rpm
Valvetrain	4 valves per cylinder, steel timing chain
Fuel	Unleaded 87-octane
Transmission (standard)	5-speed manual
Transmission (optional)	Variable (VTi)

CHASSIS

Drivetrain	Front-engine/front-wheel drive
Body construction	Steel spaceframe with front and rear crumple zones and side impact protection
Exterior panels	Polymer front fenders, door panels, rear quarter-panels, and bumper fascias; galvanized steel hood, roof, and trunklid
Bumpers	Five-mph, front and rear
Front suspension	Independent strut-type with stabilizer bar
Rear suspension	Semi-independent torsion-beam with stabilizer bar
Sport-tuned suspension	Specific strut valve tuning and larger diameter stabilizer bars (ION-3)
Steering	Electric power steering with variable assist
Brakes	Power-assisted front vented disc/rear drum
Exhaust	Full stainless steel

EXTERIOR DIMENSIONS (in.)

Length	185.0
Wheelbase	103.2
Width	67.9
Height	56.0
Track, front	58.8
Track, rear	58.4

INTERIOR DIMENSIONS (front/rear in.)

Legroom	42.2 / 32.7
Headroom	38.9 / 36.5
Shoulder room	54.0 / 51.0
Hip room	49.4 / 48.3

EPA MILEAGE ESTIMATES (city/highway mpg)¹

Manual transmission	26 / 33
Variable (VTi) transmission	24 / 32

WEIGHTS & CAPACITIES

	ION-2	ION-3
Curb weight, manual / VTi (lbs.)	2,756 / 2,808	2,778 / 2,831
EPA passenger volume (cu. ft.)	87.3	87.3
EPA cargo-area volume (cu. ft.)	14.2	14.2
Fuel capacity (gal.)	13.5	13.5
Passenger seating	4	4

TIRES & WHEELS

Tire size	P195 / 60R15	P205 / 55R16
Wheels	15" steel, 15" optional alloy	16" alloy

Quad coupe available in spring 2003.

Vehicles in brochure are shown with optional equipment and/or retailer-installed accessories.

¹Actual mileage may vary with driving conditions—use for comparison only. ²Requires Convenience Package. ³Head Curtain Side Air Bags are designed to help reduce the risk of head and neck injuries to front and rear seat occupants on the rear side of certain side impact collisions. Always use safety belts and proper child restraints, even with air bags. Children are safer when properly secured in a rear seat. See the Owner's Handbook for more safety information. *Call 1-800-ONSTAR* (1-800-667-8277) or visit www.ionstar.com for system limitations and details. Requires CD/cassette or six-disc CD-changer and Convenience and Travel Packages.

QUAD COUPE FEATURES & OPTIONS

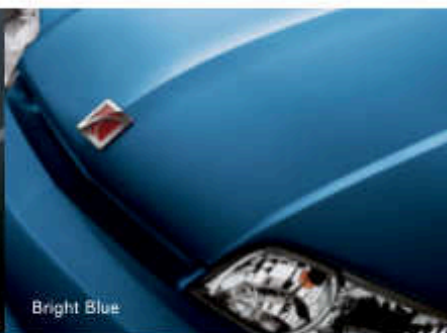
EXTERIOR FEATURES	ION-2	ION-3
Dual rear access doors	•	•
Dual power exterior mirrors	△	•
Foglamps	—	•
Power sunroof ²	○	○
Rear spoiler	○	○
COMFORT & CONVENIENCE FEATURES		
Air conditioning with dust and pollen filter	•	•
Adjustable steering column	•	•
Retained accessory power	•	•
Rear window defogger with manual shutoff and timed reset	•	•
Battery run-down protection for interior lighting and cargo area	•	•
Dual visor vanity mirrors	•	•
Reclining front bucket seats with open adjustable headrests	•	•
Fold-flat front passenger seatback	•	•
Height-adjustable driver's seat	•	•
Driver's seatback storage pocket	•	•
Leather Appointments: leather-trimmed seats, gearshift knob, and steering wheel	—	○
Storage compartments: three in-dash bins, glove box, and front and rear door map pockets	•	•
Front center console with open storage bin and dual cupholders	•	—
Front center console with adjustable armrest, enclosed storage, dual cupholders	—	•
Rear console with dual cupholders and storage area	•	•
Three-way dome light with delayed shutoff feature, theater dimming, and cargo-area light	•	•
Dual 12-volt power outlets	•	•
Power door locks with anti-lockout, delayed locking, and programmable auto lock/unlock	•	•
Power windows with driver express-down	△	•
Remote hood and trunk release	•	•
60/40-split folding rear seatbacks	•	•
Secure trunk feature with locking seatbacks and trunk release disable	•	•
Carpeted front and rear floor mats	○	○
Warning chimes for headlights-on, key-in-ignition, parking-brake-on, and turn signal left-on reminder	•	•
SAFETY & SECURITY		
Anti-lock Braking System with Traction Control	○	○
Engine-immobilizing anti-theft system	•	•
Daytime running lights	•	•
Automatic headlights	—	•
Dual-stage driver and front passenger air bags ¹	•	•
Head Curtain Side Air Bags ¹	○	○
Three-point safety belts for all seating positions	•	•
Front shoulder belts with pretensioners and energy-absorbing retractors	•	•
Lower Anchorages and Top Tethers for Children (LATCH) in both rear seating positions	•	•
Emergency Trunk Release handle	•	•
OnStar [®] Communications System with one year Safe & Sound Service Plan ⁴	○	○
AUDIO SYSTEMS		
AM/FM stereo with CD player and four extended-range speakers	•	—
AM/FM stereo with CD/cassette player and four coaxial speakers	○	•
AM/FM/cassette stereo with six-disc, in-dash CD changer and four coaxial speakers	○	○
Saturn Advanced Audio System with 160-watt external amplifier and six premium speakers (Requires CD/cassette or six-disc CD changer and Convenience Package)	○	○
INSTRUMENTATION		
Center-mounted gauge cluster, black face with white graphics	•	—
Center-mounted gauge cluster, silver face with black graphics	—	•
LCD message center including low-fuel indicator and oil-life monitor	•	•
OPTION PACKAGES		
Convenience Package: power windows and exterior mirrors, cruise control, and remote keyless entry with alarm activation, panic/alert mode, and power trunk release	○	•
Travel Package: driver and passenger map lights, auto-dimming inside rearview mirror with outside temperature and compass display	○	○

• = standard ○ = optional △ = included with optional Convenience Package — = not available

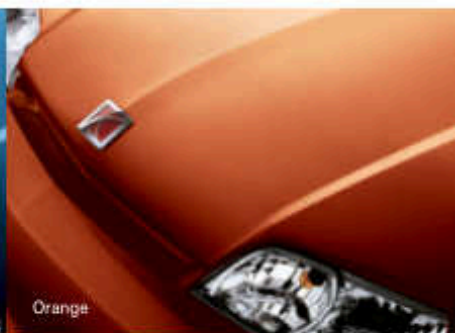
EXTERIOR COLOR / ROOF RAIL COLOR	AVAILABLE ROOF RAIL COLOR	STANDARD CLOTH ION-2	ION-3	OPTIONAL LEATHER ION-3
Black	Silver	Dark Grey, Tan	Dark Grey, Tan	Dark Grey, Tan
Bright Blue	Silver	Dark Grey	Dark Grey, Tan	Dark Grey, Tan
Orange	Silver	—	Dark Grey, Tan	Dark Grey, Tan
Red	Silver	Tan	Dark Grey, Tan	Dark Grey, Tan
Silver	—	Dark Grey	Dark Grey	Dark Grey
White	Silver	Dark Grey, Tan	Dark Grey, Tan	Dark Grey, Tan



Black



Bright Blue



Orange



Red



Silver



White



Tan Standard Cloth ION-2



Tan Standard Cloth ION-3



Tan Optional Leather ION-3



Dark Grey with blue weave Standard Cloth ION-2



Dark Grey Standard Cloth ION-3



Dark Grey Optional Leather ION-3



15" Standard Cover ION-2



15" Optional Alloy ION-2



16" Standard Alloy ION-3