



SATURN

# ION



2007

## LIKE ALWAYS.

There is a way to do things differently. To replace hassle and haggle with learn and listen. To make the process of buying a car less of a process. To pour everything we have into everything we do.

## THE SATURN ION: LIKE NEVER BEFORE.

There is a way to get what's beyond your expectations. To feel a boost in horsepower. To hear your MP3s through an advanced sound system. There is a way to get an e-mail from your car telling you it's due for an oil change. And there is a way to get all of this in one car, with two personalities. The 2007 ION sedan and ION quad coupe.



The ION-3 quad coupe in Silver Nickel with available rear spoiler.

## LIKE NEVER BEFORE.

There is a way to stay the same in one way, and evolve in another. To marry horsepower with efficiency, and beauty with affordability. To make it both thoughtful and surprising. There is a way to kick compromise to the curb.



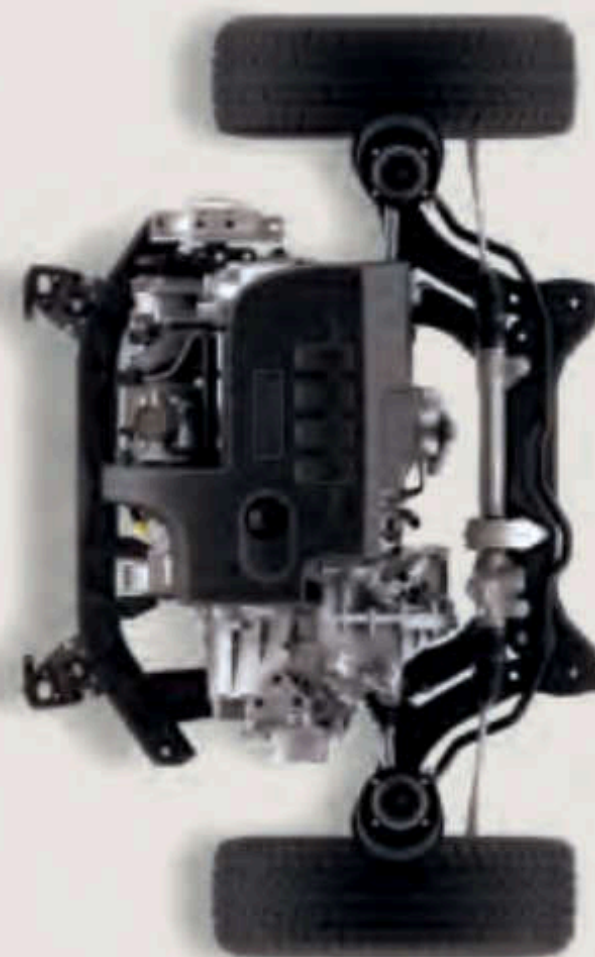
## SPEND TIME WITH THE DETAILS. WE DID.

Take a look at the ION and it becomes clear—there's more than meets the eye. At first glance you see power windows and locks, a speedometer and a seat. Then you realize those locks have a forgiving anti-lockout feature to reduce the chance you'll lock the keys in the ignition, and on the ION-3 you notice that round button for power sideview mirrors. Within that speedometer there's an LCD message center that spells out handy reminders to let you know if the trunk is open, for example, or that the oil needs changing. And that seat? The head restraint design is less likely to block your rearward view, and the contoured side bolsters are more likely to hold you in place during cornering. The ION is filled with features that may surprise you, unless you've been to [saturn.com/ion](http://saturn.com/ion), where the details are described as you might expect—in detail.



# DUAL VVT:

A HEAD START AT EVERY GREEN LIGHT.



The ION-3's available 2.4-liter, 16-valve, DOHC engine is rated at 175 horsepower with 164 ft. lbs. of torque. But those numbers only tell part of the performance story, because this engine also gets a boost from our Dual Variable Valve Timing technology. The Dual VVT controls both the intake and exhaust valve timing for extra muscle, which is most apparent in the form of low-end torque. That's power you can feel launching from a standing stop—no wonder this is the same engine our engineers chose for the new Saturn SKY roadster. Those who hold efficiency in high regard will appreciate the inherent thrift of the lively 145-horsepower, 2.2-liter, DOHC engine. Like the 2.4-liter engine, it features the lightweight benefits of aluminum construction and uses twin balance shafts for smooth operation. To get that power to the wheels, choose either the standard 5-speed manual transmission with self-adjusting clutch, or the available 4-speed automatic. For more details on ION engines, visit [saturn.com/ion](http://saturn.com/ion), where you can even pop the hood for a closer look.



The ION-3 sedan with height-adjustable driver's seat, adjustable lumbar support, available Gray Leather Appointments and other features. At [saturn.com/ion](http://saturn.com/ion), you can take a 360-degree tour of the interior, including a demonstration of the folding split rear seatbacks.



## COMMAND, CONTROL, CONCERT HALL.

Simply driving the ION can prove entertaining enough, but a smart sound system can make it more so. The standard built-in auxiliary jack, for instance, means you can listen to the thousands of tracks on your MP3 player through the ION's stereo. Uplevel systems are equipped with a CD/MP3 player with four coaxial speakers and a Music Navigator that lets you sort your MP3s by artist and album. Also available: XM Satellite Radio\* with over 170 channels, and the Saturn Advanced Audio System with a 160-watt external amplifier and six premium speakers, including tweeters set close to ear height where the higher notes sound best. There are even dual 12-volt power outlets so that driver and passengers can charge phones and accessories simultaneously. Learn more—and, more appropriately, hear more—about your audio options at [saturn.com/ion](http://saturn.com/ion).



## BEAUTY IS MORE THAN SHEET METAL DEEP.

SOLAR-RAY GLASS in side and rear windows protects those inside from the full blast of the sun's UV rays.

ONSTAR® uses remote diagnostics to check key operating systems about once a month, then e-mails the results to you.\*

5.4 MM GLASS used for the windshield provides extra insulation from external sound.

DUST AND POLLEN FILTER, part of the air conditioning system, keeps the air inside fresher than the air outside.

PLATINUM-TIPPED SPARK PLUGS are designed to last for 100,000 miles, reducing the need for periodic maintenance.

TRUNK-MOUNTED BATTERY avoids engine heat, and distributes weight more evenly to improve handling.



PRETENSIONERS remove seatbelt slack to help keep front seat occupants against their seats during a collision.

RETAINED ACCESSORY POWER allows you to use the stereo and other accessories for up to ten minutes after removing the key from the ignition.

LAMINATED DASH with two steel layers sandwiching a polymer layer adds extra sound insulation between cabin and engine.

HYDRAULIC MOTOR MOUNTS are effective at isolating engine vibration and sound outside the cabin.

HYDRAULIC REAR BUSHINGS outperform rubber bushings to reduce harshness and noise.

THEFT DETERRENT immobilizes the car by cutting off fuel unless the proper key is used.



EVERY DAY IS  
DIFFERENT, SO WE  
DESIGNED THIS CAR  
FOR ALL OF THEM.

There are days with friends, days with stuff, and days with friends and stuff together. With this in mind, the ION adapts to the variety of life. Anyone riding in back will appreciate rear theater seating that raises them enough to see more than the backs of heads. Anyone stowing things in the trunk will appreciate that it's one of the biggest in its class. Not big enough? The 60/40 seats split and fold down to make room for longer items; and in the quad coupe, the front passenger seatback folds flat for even longer items. For things you need handy, there's an array of storage compartments—four bins in the instrument panel, as well as front and rear door map pockets. Inevitably, there are also days when someone dings your door. For such thoughtless actions, we offer a thoughtful solution: dent- and corrosion-resistant bodyside panels designed so you never know what hit you.





LOOKS GOOD ON THE PAGE,  
**FEELS GOOD ON  
THE PAVEMENT.**

The ION-3 quad coupe in Silver Nickel with available rear spoiler.



If you want the sleek silhouette of a coupe, the cargo access of a rear hatch and the passenger-friendly rear doors of a sedan, then chances are you want an ION quad coupe. Using a pillarless design, Saturn engineers combined easy access for friends and cavernous access for everything else, without losing the lean lines of a coupe. Rear quad doors, split folding rear seatbacks and a fold-flat front seat all work together to create a cargo area over seven feet long. Open the doors, fold the seats and see for yourself at [saturn.com/quadcoupe](http://saturn.com/quadcoupe).



THE NO-COMPROMISE COUPE  
WITH NO-NONSENSE ACCESS.

# THE ION RED LINE:

BEHIND THE WHEEL, YOU WON'T FEEL BEHIND ANYTHING.

We tested the ION Red Line at Germany's world famous Nürburgring racetrack, which helps explain why this car likes to live in the left lane. At the track, the Red Line's 205-horsepower, supercharged and intercooled engine took it from 0 to 60 in 6.2 seconds—then from 60 to 0 in 119 feet, thanks to four-wheel disc brakes with oversized rotors. On the curves, we tuned the springs, shocks, bushings and stabilizer bars for a high-performance suspension that pulled 0.85 lateral Gs on the corners.



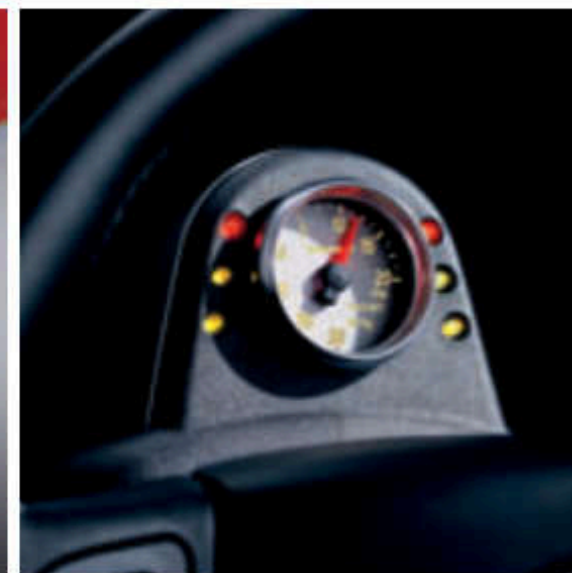
The ION Red Line in Chili Pepper Red with Z-rated tires, 17-inch forged alloy wheels, available Competition Package and available aero-wing spoiler.

NOW AVAILABLE IN HIGH PERFORMANCE,  
HIGHER PERFORMANCE AND

**HIGHEST PERFORMANCE.**



The ION Red Line exhibits its forward ground effects with integrated projector-beam foglamps and its driver's apparent zeal for the sound of a supercharger in a tunnel.



The ION Red Line starts at an impressive 205 horsepower, but with newly available performance upgrade kits, it doesn't end there. The Stage One kit churns out 236 horsepower and 205 ft. lbs. of torque, and Stage Two kicks it up to 241 horsepower and a muscular 218 ft. lbs. of torque. And there's more to upgrade than power—the available Competition Package also offers a limited slip differential, which makes the most of available traction while accelerating through corners. Also included: an illuminated ladder tachometer—a first among production cars—with a supercharger boost gauge. The adjustable tachometer translates real-time engine data into the information you need to hit perfect shifts consistently and precisely. For more on all these components, visit [saturn.com/ionredline](http://saturn.com/ionredline).





The ION Red Line is equipped with a short-throw shifter, intuitive heel-toe pedal placement and bolstered black leather-appointed seats.



It's reassuring to know that the ION received the National Highway Traffic Safety Administration's<sup>1</sup> top rating of five stars in frontal impact crash tests. But at Saturn, safety is more than any one thing at any one moment. It means planning how to prevent collisions, how to minimize their effects and how to maximize emergency response. The ION-3, for example, is equipped with automatic headlamps that clearly illuminate the road the moment they sense low lighting conditions. Daytime running lamps are also standard, and on some models, foglamps are available as well. If you do need to react, the available anti-lock braking system prevents skids while the accompanying Traction Control helps maintain grip on slippery or uneven surfaces. In the event of a collision, protection comes from the high-strength steel spaceframe and dual-stage front air bags.<sup>2</sup> Head Curtain Side Air Bags<sup>3</sup> are available, too. And we know that when a crash is over, the emergency isn't, so we made sure that OnStar comes standard with the one-year Safe & Sound Service Plan.<sup>4</sup> OnStar can help save lives by automatically contacting emergency services if your air bags deploy. For a complete list of the ION's safety features, including the Passenger Sensing System, visit [saturn.com/ion](http://saturn.com/ion).



THE THREE STAGES OF SAFETY:  
BEFORE, DURING AND AFTER.

<sup>1</sup>See inside back cover for important information about the ION's safety rating. <sup>2</sup>Air bag inflation can cause severe injury or death to anyone too close to the bag when it deploys. Be sure every occupant is properly restrained. See inside back cover for important information about air bags, including a note about child safety. <sup>3</sup>Call 1-888-4ONSTAR (1-888-466-7827), visit [onstar.com](http://onstar.com) and see inside back cover for system limitations and details.

## ION SEDAN DIMENSIONS



### WEIGHTS AND CAPACITIES

|  | ION-2         | ION-3         | ION-3 (2.4L)  |
|--|---------------|---------------|---------------|
| Curb weight (lbs.), manual / automatic   | 2,752 / 2,805 | 2,788 / 2,841 | 2,799 / 2,806 |
| Passenger volume (cu. ft.)               | 93.0          | 93.0          | 93.0          |
| Cargo-area volume (cu. ft.) <sup>1</sup> | 14.7          | 14.7          | 14.7          |
| Fuel capacity (approx. gal.)             | 13.0          | 13.0          | 13.0          |
| Passenger seating                        | 5             | 5             | 5             |

### INTERIOR DIMENSIONS (FRONT / REAR IN.)

|               |             |
|---------------|-------------|
| Headroom      | 40.0 / 37.0 |
| Legroom       | 42.2 / 33.3 |
| Hip room      | 49.5 / 49.6 |
| Shoulder room | 53.7 / 52.8 |

### ION SEDAN WHEELS



15" Standard Cover  
(ION-2)



16" Available Alloy<sup>2</sup>  
(ION-2)



16" Standard Alloy  
(ION-3)

<sup>1</sup>Cargo and load capacity limited by weight and distribution. <sup>2</sup>Requires air conditioning. <sup>3</sup>Based on GM testing. Official EPA estimates not yet available. <sup>4</sup>Requires Preferred Package. <sup>5</sup>See inside back cover for important information about air bags, including a note about child safety. <sup>6</sup>Call 1-888-4ONSTAR (1-888-466-7827), visit onstar.com and see inside back cover for system limitations and details. <sup>7</sup>Requires CD/MP3 player or six-disc, in-dash CD/MP3 player. <sup>8</sup>Available in the 48 contiguous United States. Service fees apply. Visit gm.xmradio.com for system details.

## ION SEDAN SPECIFICATIONS

### ENGINE AND TRANSMISSION

|                          | ION-2                         | ION-3                         | ION-3 (2.4L)                            |
|--------------------------|-------------------------------|-------------------------------|---|
| Engine                   | 2.2-liter, 16-valve, inline-4 | 2.2-liter, 16-valve, inline-4 | 2.4-liter, 16-valve, inline-4, Dual VVT |
| Horsepower               | 145 @ 5,600 rpm               | 145 @ 5,600 rpm               | 175 @ 6,200 rpm                         |
| Torque (ft. lbs.)        | 150 @ 4,200 rpm               | 150 @ 4,200 rpm               | 164 @ 4,800 rpm                         |
| Transmission (standard)  | 5-speed manual                | 5-speed manual                | 5-speed manual                          |
| Transmission (available) | 4-speed automatic             | 4-speed automatic             | 4-speed automatic                       |

### CHASSIS

|                   |   |
|-------------------|---|
| Drivetrain        | Front-engine / front-wheel drive  |
| Body construction | Steel spaceframe with front and rear crumple zones and side-impact protection   |
| Suspension        | Independent front and semi-independent torsion-beam rear with front and rear stabilizer bars (2.2L / 2.4L)<br>Sport-tuned strut valves and larger diameter stabilizer bars (2.4L) |
| Steering          | Electric power with variable assist, tuned for each model   |
| Brakes            | Power-assisted ventilated front disc / rear drum  |

### FUEL ECONOMY ESTIMATES (CITY / HWY MPG)<sup>3</sup>

|                        |         |         |         |
|------------------------|---------|---------|---------|
| Manual transmission    | 26 / 35 | 26 / 35 | 25 / 34 |
| Automatic transmission | 24 / 32 | 24 / 32 | 24 / 32 |

### COMFORT AND CONVENIENCE

|   | ION-2 | ION-3 | ION-3 (2.4L) |
|---|-------|-------|--------------|
| 60 / 40-split folding rear seatbacks  | •     | •     | •            |
| Adjustable steering column  | •     | •     | •            |
| Air conditioning with dust and pollen filter  | •     | •     | •            |
| Dent / corrosion-resistant bodyside panels  | •     | •     | •            |
| Dual 12-volt power outlets  | •     | •     | •            |
| Dual visor vanity mirrors   | •     | •     | •            |
| Flat-towable behind recreational vehicle  | •     | •     | •            |
| Floor mats, carpeted front and rear   | •     | •     | •            |
| Front console with adjustable armrest, enclosed storage and dual front cupholders   | •     | •     | •            |
| LCD message center including low-fuel indicator and oil-life monitor  | •     | •     | •            |
| Leather Appointments: leather-trimmed seats, steering wheel and gearshift knob  | —     | •     | •            |
| Power door locks with anti-lockout, delayed locking and programmable lock / unlock  | •     | •     | •            |
| Power sunroof <sup>4</sup>  | •     | •     | •            |
| Preferred Package: power windows and exterior mirrors, cruise control, CD / MP3 stereo, height-adjustable driver's seat, remote keyless entry with alarm activation, panic / alert mode and power trunk release | •     | •     | •            |
| Rear spoiler  | •     | •     | •            |
| Rear theater seating  | •     | •     | •            |
| Rear window defogger with manual shutoff and timed reset  | •     | •     | •            |
| Retained accessory power  | •     | •     | •            |
| Storage compartments: four bins in instrument panel, front and rear door map pockets, and glove box   | •     | •     | •            |
| Travel Package: auto-dimming interior rearview mirror with outside temperature and compass display, driver and passenger map lights   | •     | •     | •            |
| Warning chimes for headlamps on, key in ignition, low fuel, parking brake on and turn-signal left on  | •     | •     | •            |

### SAFETY AND SECURITY

|   |   |   |   |
|---|---|---|---|
| Anti-lock brakes with Traction Control  | • | • | • |
| Automatic halogen headlamps   | — | • | • |
| Battery run-down protection for interior and cargo-area lighting                          | • | • | • |
| Child-security rear door locks  | • | • | • |
| Daytime running lamps   | • | • | • |
| Dual-stage driver and front passenger air bags with Passenger Sensing System <sup>5</sup> | • | • | • |
| Emergency trunk release handle  | • | • | • |
| Engine-immobilizing theft-deterrent feature   | • | • | • |
| Fog lamps   | — | • | • |
| Head Curtain Side Air Bags <sup>6</sup>   | • | • | • |
| Height-adjustable front safety belts with pretensioners and energy-absorbing retractors   | • | • | • |
| Lower Anchorages and Top Tethers for Children (LATCH) in all rear seating positions       | • | • | • |
| OnStar <sup>7</sup> with one-year Safe & Sound Service Plan <sup>8</sup>                  | • | • | • |

### ENTERTAINMENT SYSTEMS

|   |   |   |   |
|---|---|---|---|
| CD player with AM / FM stereo, digital signal processor, auxiliary input jack and four extended-range speakers                  | • | — | — |
| CD / MP3 player with AM / FM stereo, digital signal processor, auxiliary input jack and four coaxial speakers                   | • | • | • |
| Saturn Advanced Audio System: 160-watt external amplifier and six premium speakers <sup>9,10</sup>                              | • | • | • |
| Six-disc, in-dash CD / MP3 player with AM / FM stereo, digital signal processor, auxiliary input jack and four coaxial speakers | • | • | • |
| XM Satellite Radio <sup>11</sup>  | • | • | • |

• = standard    • = available    — = not available

## ION QUAD COUPE DIMENSIONS



### WEIGHTS AND CAPACITIES

|  | ION-2         | ION-3         | ION-3 (2.4L)  |
|--|---------------|---------------|---------------|
| Curb weight (lbs.), manual / automatic   | 2,796 / 2,848 | 2,813 / 2,866 | 2,823 / 2,890 |
| Passenger volume (cu. ft.)               | 87.3          | 87.3          | 87.3          |
| Cargo-area volume (cu. ft.) <sup>1</sup> | 14.2          | 14.2          | 14.2          |
| Fuel capacity (approx. gal.)             | 13.0          | 13.0          | 13.0          |
| Passenger seating                        | 4             | 4             | 4             |

### INTERIOR DIMENSIONS (FRONT / REAR IN.)

|               |             |
|---------------|-------------|
| Headroom      | 38.9 / 36.5 |
| Legroom       | 42.2 / 32.7 |
| Hip room      | 49.4 / 48.3 |
| Shoulder room | 54.0 / 51.0 |

### ION QUAD COUPE WHEELS



15" Standard Cover (ION-2)

16" Available Alloy<sup>1</sup> (ION-2)

16" Standard Alloy (ION-3)

<sup>1</sup>Cargo and load capacity limited by weight and distribution. <sup>2</sup>Requires air conditioning. <sup>3</sup>Based on GM testing. Official EPA estimates not yet available. <sup>4</sup>Requires Preferred Package. <sup>5</sup>Traction Control and automatic headlamps not available on Red Line. <sup>6</sup>See inside back cover for important information about air bags, including a note about child safety. <sup>7</sup>Call 1-888-4ONSTAR (1-888-466-7627), visit onstar.com and see inside back cover for system limitations and details. <sup>8</sup>Requires CD/MP3 player or six-disc, in-dash CD/MP3 player. <sup>9</sup>Available in the 48 contiguous United States. Service fees apply. Visit gm.xmradio.com for system details.

## ION QUAD COUPE SPECIFICATIONS

### ENGINE AND TRANSMISSION

|                          | ION-2                         | ION-3                         | ION-3 (2.4L)                            |
|--------------------------|-------------------------------|-------------------------------|---|
| Engine                   | 2.2-liter, 16-valve, inline-4 | 2.2-liter, 16-valve, inline-4 | 2.4-liter, 16-valve, inline-4, Dual VVT |
| Horsepower               | 145 @ 5,600 rpm               | 145 @ 5,600 rpm               | 175 @ 6,200 rpm                         |
| Torque (ft. lbs.)        | 150 @ 4,200 rpm               | 150 @ 4,200 rpm               | 164 @ 4,800 rpm                         |
| Transmission (standard)  | 5-speed manual                | 5-speed manual                | 5-speed manual                          |
| Transmission (available) | 4-speed automatic             | 4-speed automatic             | 4-speed automatic                       |

### CHASSIS

|                   |   |
|-------------------|---|
| Drivetrain        | Front-engine / front-wheel drive  |
| Body construction | Steel spaceframe with front and rear crumple zones and side-impact protection   |
| Suspension        | Independent front and semi-independent torsion-beam rear with front and rear stabilizer bars (2.2L / 2.4L). Sport-tuned strut valves and larger diameter stabilizer bars (2.4L) |
| Steering          | Electric power with variable assist, tuned for each model   |
| Brakes            | Power-assisted ventilated front disc / rear drum  |

### FUEL ECONOMY ESTIMATES (CITY / HWY MPG)<sup>8</sup>

|                        |         |         |         |
|------------------------|---------|---------|---------|
| Manual transmission    | 26 / 35 | 26 / 35 | 25 / 34 |
| Automatic transmission | 24 / 32 | 24 / 32 | 24 / 32 |

### COMFORT AND CONVENIENCE

|   | ION-2 | ION-3 | ION-3 (2.4L) |
|---|-------|-------|--------------|
| 60 / 40-split folding rear seatbacks  | •     | •     | •            |
| Adjustable steering column  | •     | •     | •            |
| Air conditioning with dust and pollen filter  | •     | •     | •            |
| Dent / corrosion-resistant bodyside panels  | •     | •     | •            |
| Dual 12-volt power outlets  | •     | •     | •            |
| Dual visor vanity mirrors   | •     | •     | •            |
| Flat-towable behind recreational vehicle  | •     | •     | •            |
| Floor mats, carpeted front and rear   | •     | •     | •            |
| Fold-flat front passenger seatback with scuff-resistant back  | •     | •     | •            |
| Front console with adjustable armrest, enclosed storage and dual front cupholders   | •     | •     | •            |
| LCD message center including low-fuel indicator and oil-life monitor  | •     | •     | •            |
| Leather Appointments: leather-trimmed seats, steering wheel and gearshift knob  | —     | •     | •            |
| Power door locks with anti-lockout, delayed locking and programmable lock / unlock  | •     | •     | •            |
| Power sunroof <sup>9</sup>  | •     | •     | •            |
| Preferred Package: power windows and exterior mirrors, cruise control, CD / MP3 stereo, height-adjustable driver's seat, remote keyless entry with alarm activation, panic / alert mode and power trunk release | •     | •     | •            |
| Rear spoiler  | •     | •     | •            |
| Rear window defogger with manual shutoff and timed reset  | •     | •     | •            |
| Storage compartments: four bins in instrument panel, front and rear door map pockets, and glove box   | •     | •     | •            |
| Travel Package: auto-dimming interior rearview mirror with outside temperature and compass display, driver and passenger map lights   | •     | •     | •            |

### SAFETY AND SECURITY

|   |   |   |   |
|---|---|---|---|
| Anti-lock brakes with Traction Control <sup>5</sup>                                       | • | • | • |
| Automatic halogen headlamps <sup>6</sup>  | — | • | • |
| Battery run-down protection for interior and cargo area lighting                          | • | • | • |
| Daytime running lamps   | • | • | • |
| Dual-stage driver and front passenger air bags with Passenger Sensing System <sup>7</sup> | • | • | • |
| Emergency trunk release handle  | • | • | • |
| Engine-immobilizing theft-deterrent feature   | • | • | • |
| Fog lamps   | — | • | • |
| Front safety belts with pretensioners and energy-absorbing retractors                     | • | • | • |
| Head Curtain Side Air Bags <sup>7</sup>   | • | • | • |
| Lower Anchorages and Top Tethers for Children (LATCH) in all rear seating positions       | • | • | • |
| OnStar <sup>8</sup> with one-year Safe & Sound Service Plan <sup>9</sup>                  | • | • | • |

### ENTERTAINMENT SYSTEMS

|   |   |   |   |
|---|---|---|---|
| CD player with AM / FM stereo, digital signal processor, auxiliary input jack and four extended-range speakers                  | • | — | — |
| CD / MP3 player with AM / FM stereo, digital signal processor, auxiliary input jack and four coaxial speakers                   | • | • | • |
| Saturn Advanced Audio System: 160-watt external amplifier and six premium speakers <sup>10</sup>                                | • | • | • |
| Six-disc, in-dash CD / MP3 player with AM / FM stereo, digital signal processor, auxiliary input jack and four coaxial speakers | • | • | • |
| XM Satellite Radio <sup>11</sup>  | • | • | • |

• = standard    • = available    — = not available

## ION RED LINE SPECIFICATIONS AND DIMENSIONS

### ENGINE AND TRANSMISSION

|                   |  |
|-------------------|--|
| Engine            | 2.0-liter, 16-valve, supercharged, intercooled, inline-4               |
| Horsepower        | 205 @ 5,600 rpm  |
| Torque (ft. lbs.) | 200 @ 4,400 rpm  |
| Transmission      | Getrag 5-speed manual with close-ratio gearing and short-throw shifter |

### PERFORMANCE

|   |              |
|---|--------------|
| 0-60 mph                                | 6.2 seconds  |
| Quarter mile                            | 14.7 seconds |
| Maximum lateral acceleration (skid pad) | 0.85 g       |
| 60-0 mph                                | 119 feet     |

### WEIGHTS AND CAPACITIES

|  |       |
|--|-------|
| Curb weight (lbs.)                       | 2,945 |
| Passenger volume (cu. ft.)               | 87.3  |
| Cargo-area volume (cu. ft.) <sup>1</sup> | 14.2  |
| Fuel capacity (approx. gal.)             | 13.0  |
| Passenger seating                        | 4     |

### FUEL ECONOMY ESTIMATES (CITY/HWY MPG)<sup>2</sup>

|                     |       |
|---------------------|-------|
| Manual transmission | 22/30 |
|---------------------|-------|

### FEATURES UNIQUE TO ION RED LINE

- Eaton helical Roots supercharger with 12 psi of boost
- Air-to-water intercooler
- High-strength forged steel crankshaft and connecting rods
- High-strength oil-jet-cooled piston assemblies
- High-pressure fuel pump
- High-flow performance-tuned exhaust and air induction systems
- Equal-length torque-steer-limiting half shafts
- Nürburgring-tuned suspension, including springs, shocks, bushings and stabilizer bars
- Dunlop P215/45R-17 Sport SP9000 Z-rated performance tires
- Four-wheel ABS disc brakes; 11.6-inch vented front and 10.6-inch rear
- Sport front and rear fascias and sport rockers
- Projector-beam foglamps
- Chrome exhaust tip
- Available aero-wing spoiler
- Performance pedal placement for heel-toe driving
- Leather-appointed seats
- Leather-wrapped steering wheel
- Available Competition Package; limited slip differential, boost gauge, illuminated ladder tachometer and custom gray painted wheels with polished rims

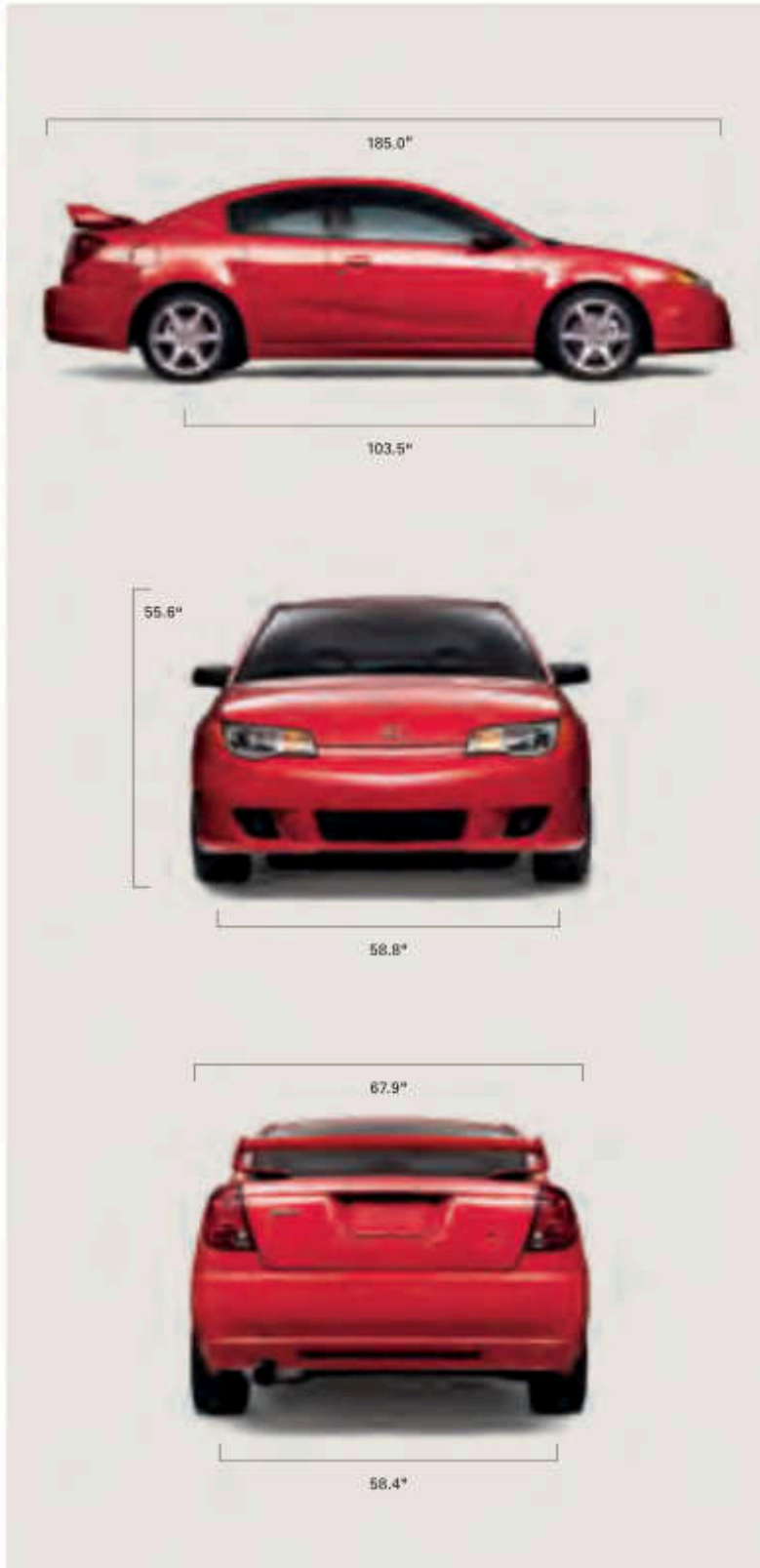
### ION RED LINE WHEELS



17" Standard Forged Alloy

17" Available Forged Alloy

<sup>1</sup>Cargo and load capacity limited by weight and distribution.  
<sup>2</sup>Based on GM testing. Official EPA estimates not yet available.



### INTERIOR DIMENSIONS (FRONT/REAR IN.)

|               |           |
|---------------|-----------|
| Headroom      | 38.9/36.5 |
| Legroom       | 42.2/32.7 |
| Hip room      | 49.4/48.3 |
| Shoulder room | 54.0/51.0 |

## AVAILABLE EQUIPMENT AND ACCESSORIES

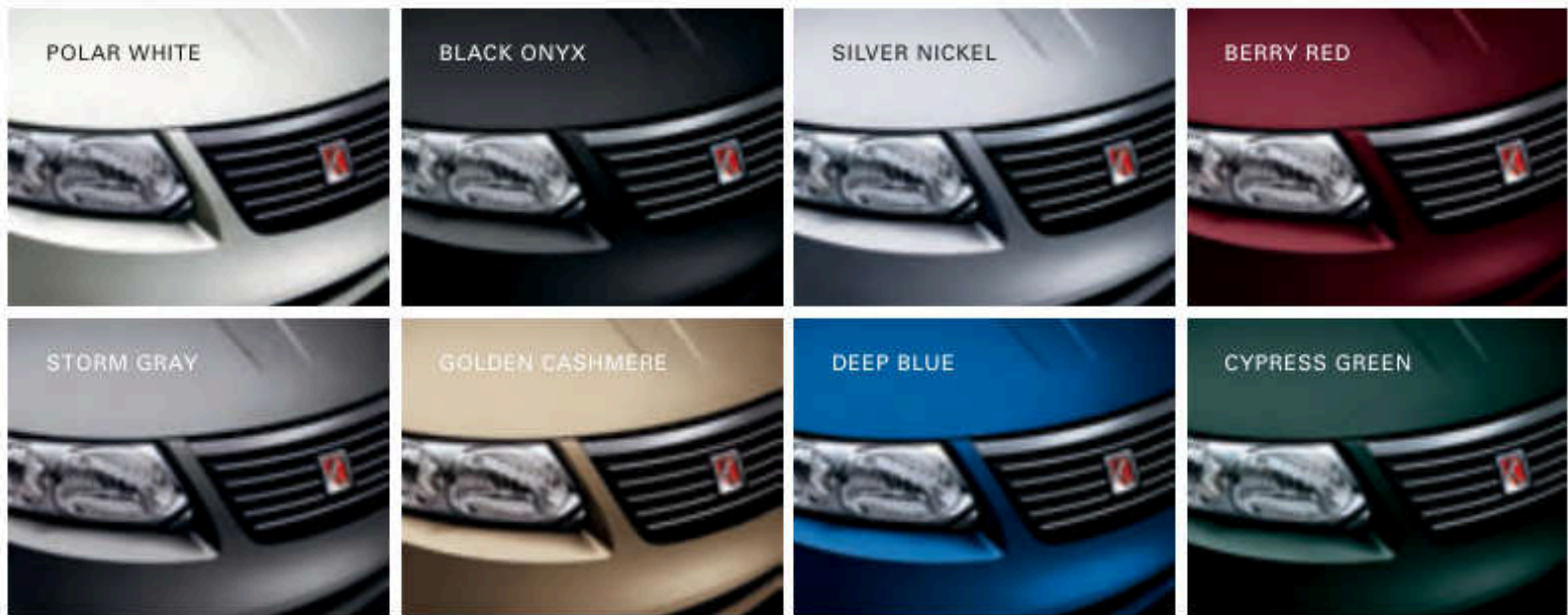
To see the latest ION accessories, visit [saturn.com/ion](http://saturn.com/ion) or your Saturn retailer.



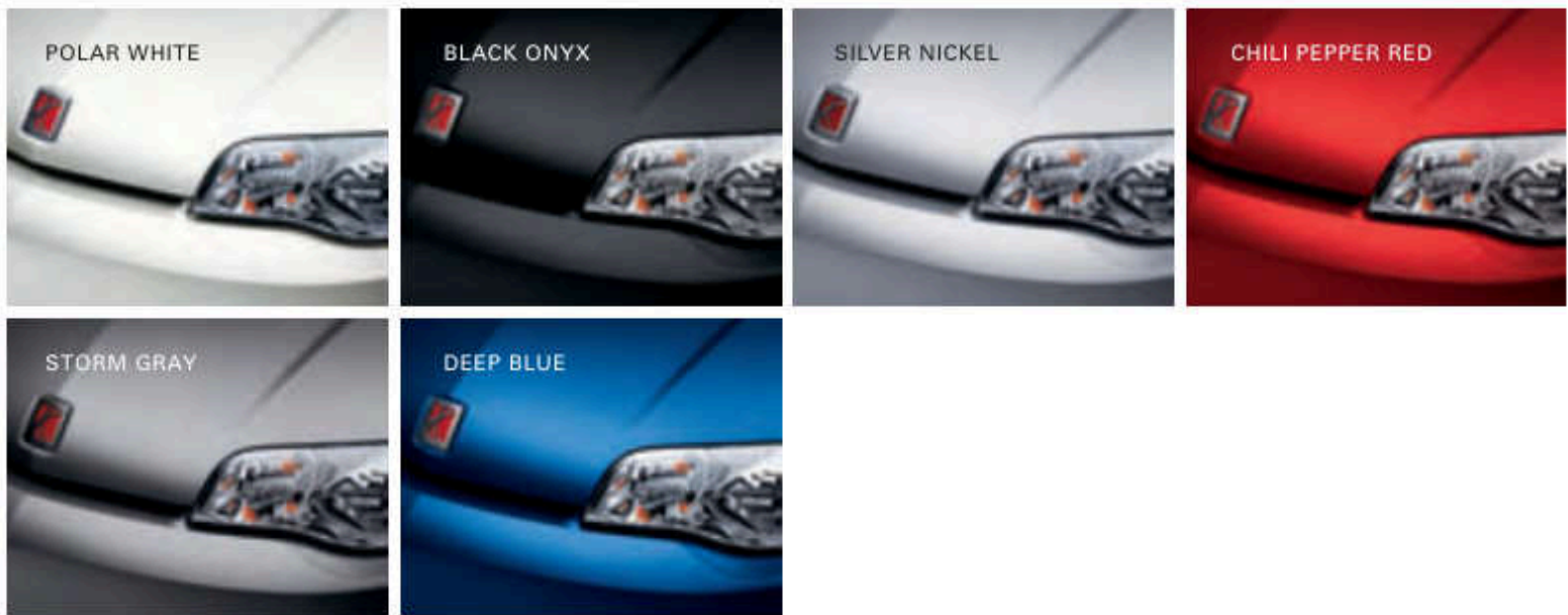
**AVAILABLE EQUIPMENT** 1) Leather Appointments are smooth, supple and easy to clean. Includes leather-trimmed seats, steering wheel and gearshift knob. ION-3 only. 2) Power sunroof for sun, sky and fresh air. Requires Preferred Package. 3) Six-disc in-dash CD/MP3 player comes with AM/FM radio, digital signal processor, auxiliary input jack and four coaxial speakers. 4) Auto-dimming electrochromatic rearview mirror for better visibility, including a temperature and compass display. Part of the Travel Package. 5) Rear spoiler generously improves people's view as you pass them on the highway. 6) Remote keyless entry is part of the Preferred Package, which also includes power windows, power exterior mirrors, height-adjustable driver's seat, CD/MP3 stereo and cruise control. Standard on ION-3; available on ION-2.

**RETAILER-INSTALLED ACCESSORIES** 7) Cargo net to keep trunk items safely stowed and in place. 8) Splash guards help protect the car sides from mud, salt and other road debris. 9) Sport pedal covers with gleaming brushed metal and rubber grip pads. Available for both manual and automatic models. 10) Wheel locks that keep your ION wheels where they belong: on your ION. 11) Sunroof wind deflector maximizes the sun while minimizing the wind's hair-mussing tendencies. 12) Roof rack keeps wet, muddy gear out of your ION's interior cargo areas. Available with a number of attachments. Visit [saturn.com/ion](http://saturn.com/ion) to see how they look on your ION. Also available for the ION Red Line but not shown: The Stage One performance upgrade kit produces a total of 236 horsepower and 205 ft. lbs. of torque; the Stage Two performance upgrade kit produces a total of 241 horsepower and 218 ft. lbs. of torque.

**ION SEDAN EXTERIOR COLORS** To see the whole ION sedan in every color, visit [saturn.com/ion sedan](http://saturn.com/ion sedan).



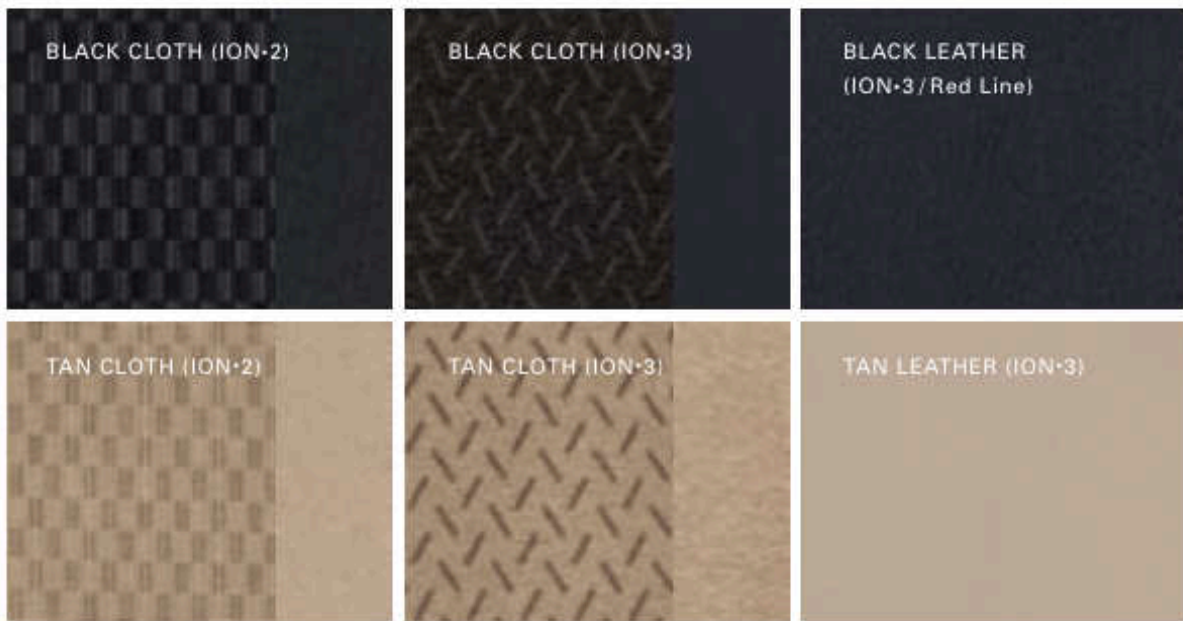
**ION QUAD COUPE EXTERIOR COLORS** To see the whole ION quad coupe in every color, visit [saturn.com/quad coupe](http://saturn.com/quad coupe).



**ION SEDAN INTERIOR COLORS**



**ION QUAD COUPE INTERIOR COLORS**



**ION SEDAN COLOR COMBINATIONS** For a closer look at your interior choices, see your Saturn retailer.

| EXTERIOR PAINT  | CLOTH (ION-2 / ION-3) | AVAILABLE LEATHER APPOINTMENTS (ION-3) |
|-----------------|-----------------------|--|
| Polar White     | GRAY / TAN            | GRAY / TAN                             |
| Black Onyx      | GRAY / TAN            | GRAY / TAN                             |
| Silver Nickel   | GRAY                  | GRAY                                   |
| Berry Red       | GRAY / TAN            | GRAY / TAN                             |
| Storm Gray      | GRAY                  | GRAY                                   |
| Golden Cashmere | TAN                   | TAN                                    |
| Deep Blue       | GRAY / TAN            | GRAY / TAN                             |
| Cypress Green   | TAN                   | TAN                                    |

**ION QUAD COUPE COLOR COMBINATIONS** For a closer look at your interior choices, see your Saturn retailer.

| EXTERIOR PAINT   | CLOTH (ION-2 / ION-3) | AVAILABLE LEATHER APPOINTMENTS | LEATHER APPOINTMENTS (RED LINE) |
|------------------|-----------------------|--------------------------------|---------------------------------|
| Polar White      | BLACK / TAN           | BLACK / TAN                    | —                               |
| Black Onyx       | BLACK / TAN           | BLACK / TAN                    | BLACK                           |
| Silver Nickel    | BLACK                 | BLACK                          | BLACK                           |
| Chili Pepper Red | BLACK / TAN           | BLACK / TAN                    | BLACK                           |
| Storm Gray       | BLACK                 | BLACK                          | —                               |
| Deep Blue        | BLACK / TAN           | BLACK / TAN                    | BLACK                           |



## START EXPECTING THE UNEXPECTED.

Never before have we offered so many different ways to drive. The newest generation of Saturn is represented by the stunning SKY® roadster (limited availability in 2006), also available as the SKY Red Line Turbo in autumn 2006; the distinctive 252-hp AURA™ mid-size sedan, available autumn 2006; the roomy eight-passenger OUTLOOK™ SUV, available winter 2006/2007; and the VUE® compact SUV, available as the affordable VUE Green Line hybrid in autumn 2006. For a car that's small in size but big in features, test-drive the ION sedan or ION quad coupe. And for a gratifying home away from home, look into the seven-passenger RELAY van. To see more of the next generation of Saturn, visit [saturn.com](http://saturn.com).



## WHEN YOU GET A SATURN, YOU GET SATURN.

From the engineers who created your ION to the Saturn team member who hands you the keys, all Saturn people consider customers the most important part of what they do. You'll feel that on your first visit to a Saturn retailer, a place that's home to people who give you much more than a car. You'll get straightforward answers. You'll get a no-hassle experience and no-haggle prices. You'll get our Vehicle Exchange Program,\* giving you 30 days to make sure you feel great about your car. And most reassuring of all, you'll get as much attention after you're a Saturn owner as you did when you first walked into the showroom.

\*See inside back cover for details about Saturn's 30-day Vehicle Exchange Program.

### IMPORTANT WORDS ABOUT THIS CATALOG

We have tried to make this catalog comprehensive and factual. We reserve the right, however, to make changes at any time, without notice, in prices, colors, materials, equipment, specifications, models and availability. Specifications, dimensions, measurements, ratings and other numbers in this catalog and other printed materials provided at the retailer or affixed to vehicles are approximates based upon design and engineering drawings and prototypes and laboratory tests. Your vehicle may differ due to variations in manufacture and equipment. Because some information may have been updated since the time of printing, please check with your Saturn retailer for complete details. Saturn reserves the right to lengthen or shorten the model year for any product for any reason, or to start and end model years at different times.

### A NOTE ABOUT AIR BAGS AND CHILD SAFETY

Always use safety belts and the correct child restraint for your child's age and size. Even in vehicles equipped with air bags and the Passenger Sensing System, children are safer when properly secured in a rear seat. Never place a rear-facing infant restraint in the front seat of any vehicle equipped with an active air bag. Air bag inflation can cause severe injury or death to anyone too close to the bag when it deploys. Be sure every occupant is properly restrained. See your vehicle Owner's Handbook and child-safety seat instructions for more information.

### ONSTAR INFORMATION

OnStar services require vehicle electrical system (including battery), wireless service and GPS satellite signals to be available and operating for features to function properly. OnStar acts as a link to existing emergency service providers. Subscription Service Agreement required. Call 1-888-4ONSTAR (1-888-466-7827) or visit [onstar.com](http://onstar.com) for OnStar's Terms and Conditions, Privacy Policy, and system limitations and details.

### IMPORTANT INFORMATION ABOUT THE ION'S SAFETY RATING

Test based on 2006 Saturn ION. Five-star rating is for the driver and passenger in the frontal crash test. Government star ratings are part of the National Highway Traffic Safety Administration's (NHTSA) New Car Assessment Program ([www.safercar.gov](http://www.safercar.gov)).

### SATURN'S VEHICLE EXCHANGE PROGRAM

Within the first 30 days or 1,500 miles of delivery, whichever comes first, the original purchaser may exchange his or her Saturn vehicle if not completely satisfied. In the event that an owner returns his or her vehicle, he or she will exchange it for another 2007 Saturn vehicle. See retailer for limitations and restrictions. All the same factory-supported initiatives will be included on the exchange vehicle that were on the original vehicle. The vehicle must be returned in the condition in which it was delivered, without damage or excessive wear and tear. If non-warranty repairs equal to or greater than \$300 have been performed or are necessary, the vehicle is not eligible to be returned; if less than \$300, the damage must be repaired or the estimate deducted from the credit toward the exchange vehicle.

### NEW VEHICLE LIMITED WARRANTY

This warranty is for GM vehicles registered in the U.S. See your Saturn retailer for terms and conditions. Covered for 3 years/36,000 miles (whichever comes first): the complete vehicle, tires, towing to your nearest Saturn retailer, cosmetic corrosion resulting from defects, repairs made to correct any vehicle defect, with no charge for most warranty repairs. Covered for 6 years/100,000 miles (whichever comes first): rust-through corrosion.

### POWERTRAIN LIMITED WARRANTY

This fully transferable warranty is for GM vehicles registered in the U.S. See your Saturn retailer for terms and conditions. Covered for 5 years/100,000 miles (whichever comes first): most engine, transmission, transfer case and axle assemblies.

### ROADSIDE ASSISTANCE

For 5 years/100,000 miles (whichever comes first): 24-Hour Roadside Assistance that includes fuel delivery, lockout, flat tire repair, jump start and certain emergency towing services. This fully transferable service is for GM vehicles registered in the U.S. See your Saturn retailer for terms and conditions.

### COURTESY TRANSPORTATION

For 5 years/100,000 miles (whichever comes first): ask your Saturn retailer for Courtesy Transportation if you leave your vehicle for warranty repairs. You may qualify for expense reimbursement and/or transportation options. Services vary by retailer.

### CORROSION PROTECTION

Saturn vehicles are designed and built to resist corrosion. All body and sheet metal components are warranted against rust-through corrosion for 6 years/100,000 miles, whichever comes first. Application of additional rust-inhibiting materials is not required under the corrosion coverage and none is recommended. See your Saturn retailer for terms of this limited warranty.

### AN IMPORTANT NOTE ABOUT ALTERATIONS AND WARRANTIES

Installations or alterations to the original equipment vehicle (or chassis) as distributed by GM are not covered by the GM New Vehicle Limited Warranty. The special body company, assembler, equipment installer or upfitter is solely responsible for warranties on the body or equipment and any alterations (or any effect of the alterations) to any of the parts, components, systems or assemblies installed by GM. GM is not responsible for the safety or quality of design features, materials or workmanship of any alterations by such suppliers.

### ASSEMBLY

Saturn vehicles and their components are assembled or produced by different operating units of GM, its subsidiaries or suppliers to GM worldwide. We sometimes find it necessary to produce Saturn vehicles with different or differently sourced components than originally scheduled. Because some options may be unavailable when your vehicle is assembled, we suggest you verify that your vehicle includes the equipment you ordered or, if there are changes, that they are acceptable to you.

### ENGINES

Saturn products are equipped with engines produced by GM Powertrain or other suppliers to GM worldwide. The engines in Saturn products may also be used in other GM makes and models.

### UPDATED SERVICE INFORMATION

Saturn retailers receive useful service bulletins about Saturn products. See your retailer for more information.

### GM MOBILITY

GM Mobility assists people with unique transportation needs by offering a variety of resources, including aftermarket adaptive equipment. Speak to a knowledgeable Assistance Center representative at 1-800-323-9935 (TTY users: 1-800-833-9935) or visit [gmmobility.com](http://gmmobility.com) for more information.

©2006 Saturn Corporation. Saturn and its logo are registered trademarks of Saturn Corporation. ION is a registered trademark of Saturn Corporation. ION07MY



Like always. Like never before.

There is a way to recapture the world's imagination. To make pulses rise and heads turn. To make innovation as basic as breathing, and design more thoughtful. There is a way to stay the same in one way, and evolve in another. To build a car company that doesn't act like a car company. There is a way to treat people like always. There is a way to make cars like never before. Saturn. Like always. Like never before.

