



**Big Dummy.** Two words so often used in unison. But why? Is it because we think that **"big"** and **"smart"** can't coexist? That you can't have your tyrannosaurus rex without a walnut-sized brain? That big is backwards? Uneconomical? Gas-guzzling? **Why? Why can't big be 24 mpg highway fuel economy<sup>1</sup> and still have room for eight? Head curtain side-impact air bags<sup>2</sup> covering all three seating rows and a rollover sensing system? Why can't big be smart?**

**Rethink Big. Rethink American.**

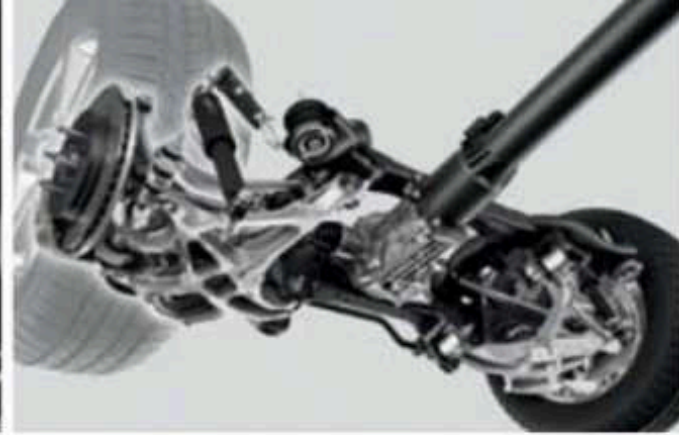
Introducing the 2008 Saturn OUTLOOK™ Crossover.

Just something  
to rethink about.

EPA-estimated **16** mpg CITY,



OUTLOOK XR shown in White Diamond Tricoat with optional equipment. Platinum Ice Tricoat replaces White Diamond Tricoat mid-model year.  
\*Based on OUTLOOK FWD and latest available competitive information. Excludes other GM vehicles. \*\*EPA-estimated mpg 16 city, 24 hwy (FWD); 16 city, 22 hwy (AWD).  
†When properly equipped. Maximum trailer ratings are calculated assuming a base vehicle, except for any option(s) necessary to achieve the rating, plus driver. The weight of other optional equipment, passengers and cargo will reduce the maximum trailer weight your vehicle can tow. See your Saturn retailer for additional details.



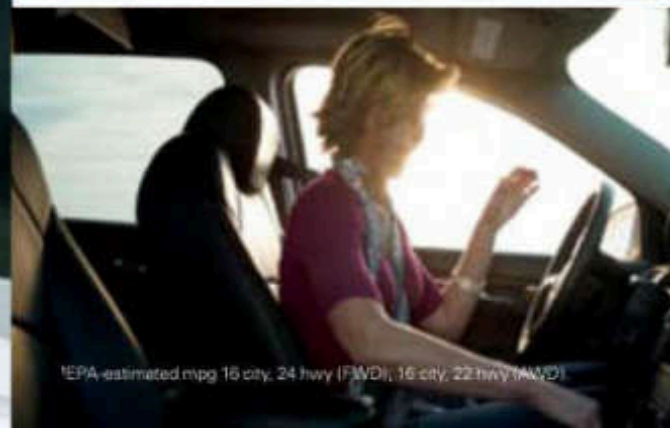
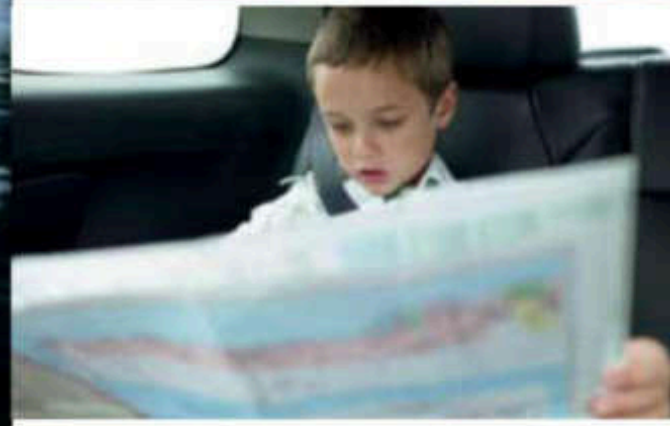
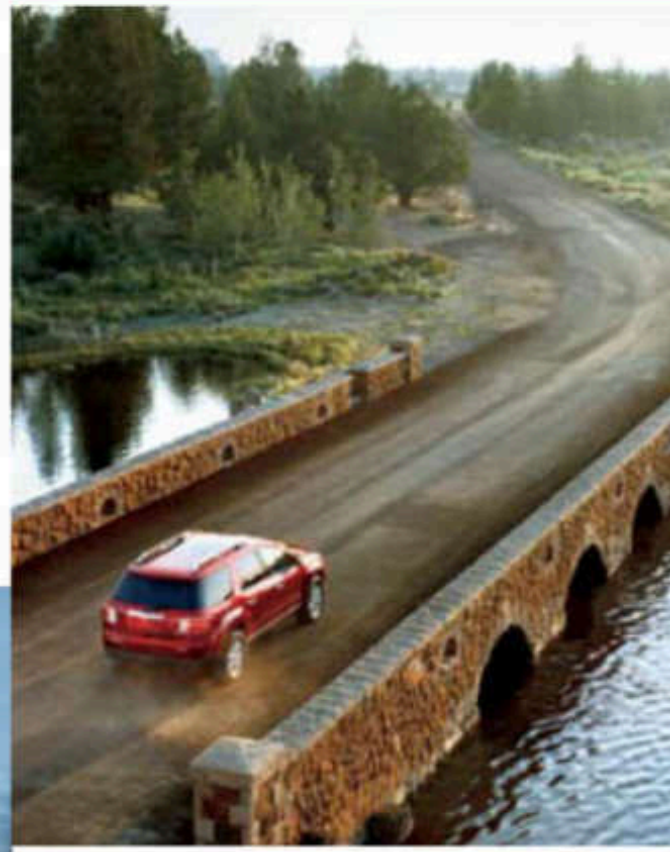
**STREET SMARTS.** The OUTLOOK's available 275-hp 3.6-liter V6 with Variable Valve Timing delivers performance without being greedy. Its design optimizes power, fuel economy,<sup>2</sup> emissions performance and smoothness. Enjoy a smarter approach to power, right under the hood.

**NOTHING TRUCK-LIKE ABOUT IT.** Built as a body-frame integral structure, this crossover SUV rides smoothly and handles impressively well. Its exceptional comfort and agility come from a long wheelbase, wide stance and four-wheel independent suspension. For more challenging road surfaces, available intelligent all-wheel drive delivers performance and traction when you need it most.

**TAKE THE FUN WITH YOU. AT THE TOUCH OF A BUTTON.** The OUTLOOK lets you tow up to 4,500 pounds.<sup>3</sup> Even if you're just hauling heavy cargo, the 6-speed Hydra-Matic transmission with available tow/haul mode ensures optimal towing performance. The flawless shifting, fluid acceleration and downhill control will help minimize the wear to your adventure vehicle.

**Does an SUV have to drive like an SUV? Does it have to be a lumbering dinosaur from another era? Moving at the speed of prehistoric? Stopping at every gas station just out of habit?<sup>1</sup> Why can't a large SUV be fun to drive? Seat eight but not feel like a bus? Would this still make it an SUV? Yes, but not the kind you're used to. It's the Saturn OUTLOOK Crossover. Maybe it's time to rethink big.**

**24** mpg **HIGHWAY.**  
The best gas mileage of any 8-passenger SUV.<sup>4</sup>

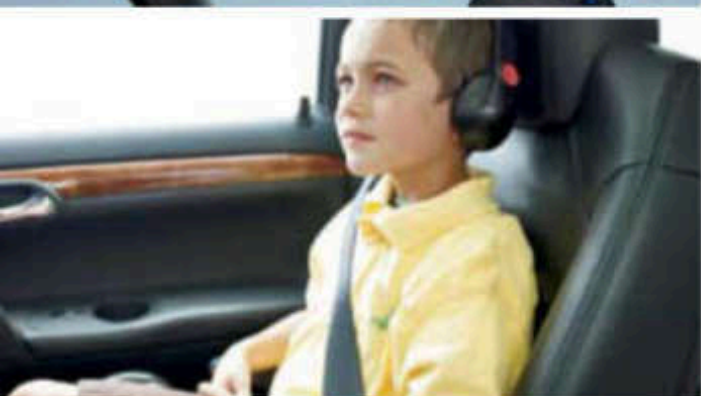
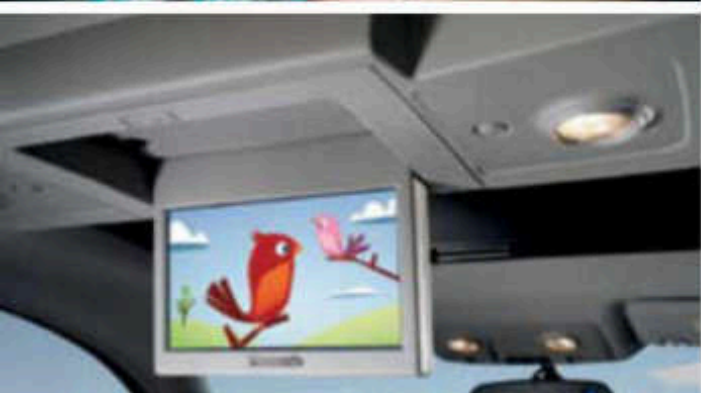


<sup>1</sup>EPA-estimated mpg 16 city, 24 hwy (FWD), 16 city, 22 hwy (AWD)

**TECHIE WITHOUT FEELING TECHIE.** There are no compromises with comfort or the state-of-the-art entertainment system in the OUTLOOK. Day or night, you can rely on the available advanced DVD-based GPS navigation system with a 6.5" diagonal touchscreen display.<sup>1</sup>

The navigation screen is also where you can view the available rear-vision camera that helps you when backing up. It's a new feature we've added for 2008 to make the OUTLOOK that much smarter.

While the driver and front passenger have the option of available heated seats, all passengers will appreciate the available Advanced Audio Package, featuring a 300-watt amplifier and ten speakers, including a subwoofer. It sets the stage for the available rear-seat DVD entertainment system with wireless remote and input jacks for audio and game players. Now your kids can enjoy their favorite movie for the thirtieth time while you enjoy the AM/FM stereo, MP3-compatible CD player, iPod<sup>®</sup> auxiliary input, or available XM Satellite Radio<sup>®</sup> with 170 channels of music, sports, news and talk.



OUTLOOK XR with optional equipment shown in Tan Leather.  
<sup>1</sup>Map coverage not available in Puerto Rico, Virgin Islands, and portions of Canada. <sup>2</sup>iPod<sup>®</sup> is a mobile digital device. iPod<sup>®</sup> is a trademark of Apple, Inc., registered in the U.S. and other countries. All rights reserved. <sup>3</sup>Available only in the 48 contiguous United States. Includes three months trial service. Required \$12.95 monthly subscription sold separately. All fees and programming subject to change. Subscription subject to customer agreement. For more information, visit [gm.xmradio.com](http://gm.xmradio.com).





# Practical and stylish?

We didn't believe it till we saw it either.

There's no reason to sacrifice styling just because your lifestyle requires some room. Fortunately, the OUTLOOK designers figured it out. Form and function merge together beautifully as tight panel gaps give the body a seamless and clean exterior design. A tapered roof contributes to the OUTLOOK's sporty appearance. Its bold styling includes a distinctive grille flanked by large, jewel-like projector-beam headlamps. For even better visibility, High Intensity Discharge (HID) headlamps are available on XR models. You can also upgrade from an assortment of 19" and 20" accessory wheels\* to complement OUTLOOK's exterior design.



OUTLOOK XR shown in Silver Pearl.  
\*Use only GM-approved tires and wheel combinations. See retailer for details.



Inside, the attention to detail and comfort continues. From the stylish five-gauge instrument panel with subtle matte and chrome accents to the warmth of amber-colored lighting, you'll feel instantly comfortable. Best of all, you can appreciate the great outdoors from your comfy seat inside, thanks to the available power sunroof that comes with the generous rear fixed-panel skylight.

# Rethink your weekend.

Do everything. That's pretty much the motto of the **OUTLOOK**. It's ready to go whenever and wherever you are. The dog park. The hockey rink. The local food drive. The nearest community center. It's 48 hours, and it's your job to make the most of it.

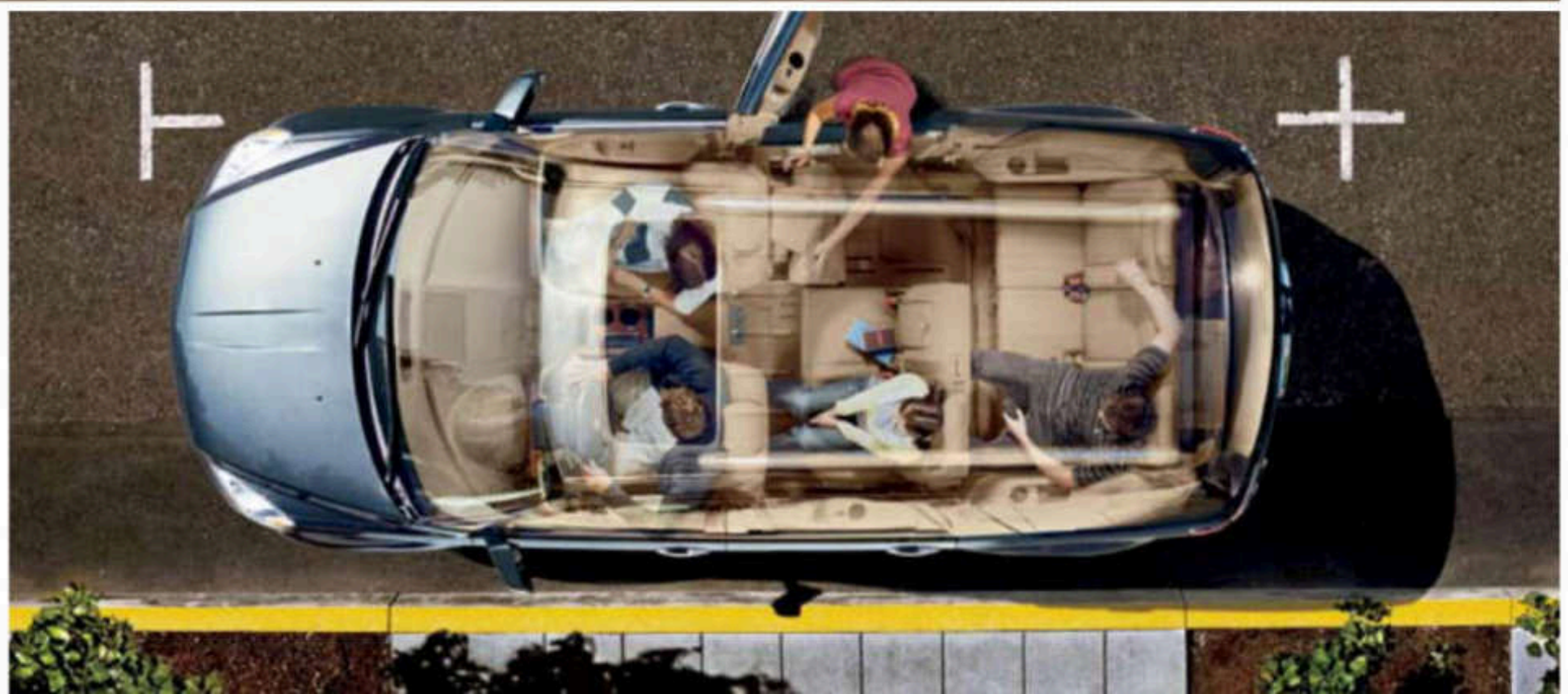




**BIG ROOM. LITTLE ROOM. IN-BETWEEN ROOM.** The OUTLOOK's got it all. Starting with the largest cargo volume in its class\* behind the first row, the OUTLOOK gives you all kinds of options. In fact, when the second- and third-row seats are folded flat, you'll find yourself with 116.9 cubic feet of glorious space.<sup>2</sup> Should you need to transport particularly long items (think skis, patio umbrellas, rugs), the two rows of 60/40-split fold-flat seats will come in handy. Another particularly helpful feature when loading up is the available power liftgate.

Pile in friends and family. The OUTLOOK offers a range of seating options – from a second-row bench seat and available captain's chairs to an adult-sized third row. Accessing the third row is easy thanks to an industry first: the Smart Slide feature, which you can use with just one hand. Plus, there's a significant 19.7 cubic feet of cargo capacity behind the third row. Once again proving that big can indeed be smart.

\*Based on 2007 GM Mid Utility Crossover Segment. Excludes other GM vehicles. <sup>2</sup>Cargo and load capacity limited by weight and distribution.

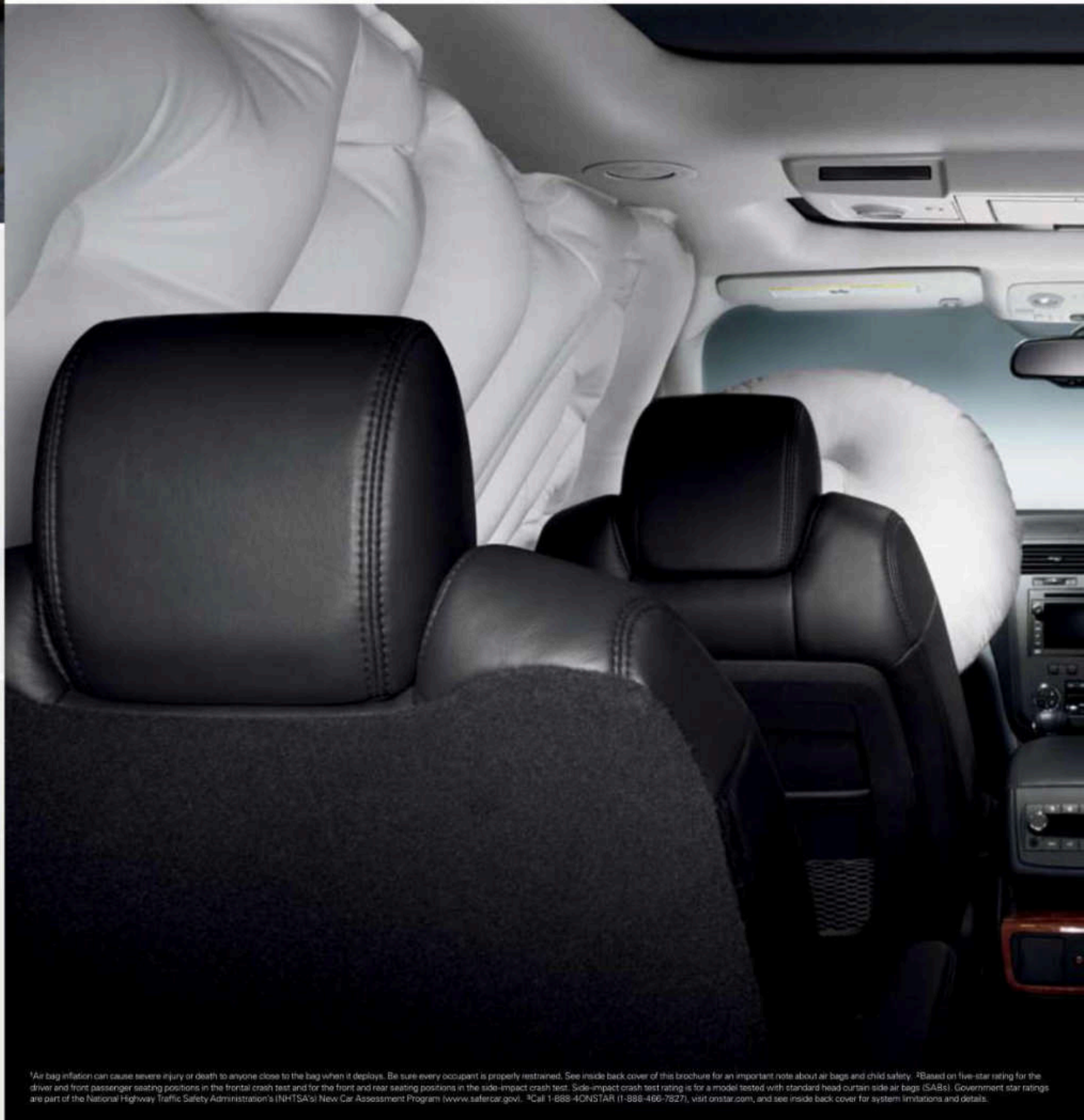
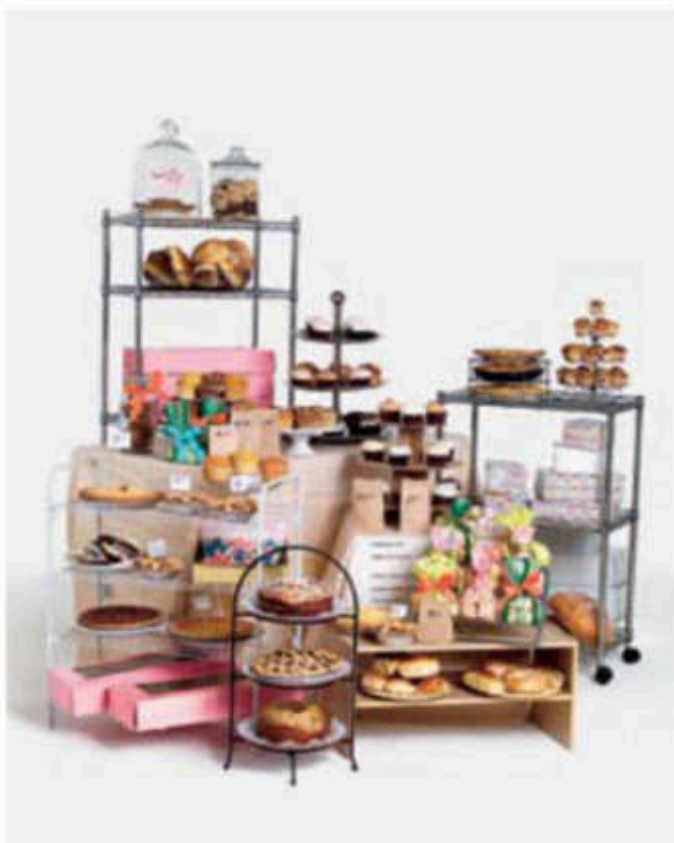




# When did **safety** become a luxury?

Shouldn't a comprehensive safety system be available to every car owner? We start with a strong structure and enhance it with a wide stance and low center of gravity to help reduce the likelihood of a rollover. Head curtain side air bags<sup>1</sup> cover all three seating rows. These are just a few of the many standard safety systems that helped earn the OUTLOOK a 5-star crash safety rating.<sup>2</sup> There's a total of six standard air bags<sup>1</sup> as well as GM's rollover sensing system, which can preemptively activate head curtain side air bags if sensors determine a rollover is imminent, keeping them inflated for an extended length of time.

StabiliTrak<sup>®</sup> with Rollover Mitigation and Traction Control uses a sophisticated network of sensors to monitor steering angle, individual wheel speed, brake pressure, lateral acceleration and yaw rate, then compares the driver's steering input to the vehicle's response and, when necessary, applies brakes or limits engine power to help keep you on your intended path. The available, intelligent all-wheel-drive system proactively anticipates wheel slip and automatically redirects the engine's power to the wheels that have traction so you can continue safely on your way.



<sup>1</sup>Air bag inflation can cause severe injury or death to anyone close to the bag when it deploys. Be sure every occupant is properly restrained. See inside back cover of this brochure for an important note about air bags and child safety. <sup>2</sup>Based on five-star rating for the driver and front passenger seating positions in the frontal crash test and for the front and rear seating positions in the side-impact crash test. Side-impact crash test rating is for a model tested with standard head curtain side air bags (SABs). Government star ratings are part of the National Highway Traffic Safety Administration's (NHTSA's) New Car Assessment Program ([www.safercar.gov](http://www.safercar.gov)). <sup>3</sup>Call 1-888-4ONSTAR (1-888-466-7827), visit [onstar.com](http://onstar.com), and see inside back cover for system limitations and details.

**ENJOY AN EXTRA LEVEL OF CONFIDENCE.**

Your OUTLOOK comes with one year of OnStar<sup>SM</sup> with Advanced Automatic Crash Notification. So even if you're involved in a collision and your air bags don't deploy, your vehicle can automatically send a signal to an OnStar Advisor who will contact you to see if you need help. This is just one of the many features OnStar offers along with available Vehicle Diagnostics, which runs hundreds of checks on the key operating systems in your vehicle (like your engine, transmission, oil and tire pressure) and sends you a monthly email report at no extra cost.



**Rethink net worth.**

They're your most valuable assets. And there's nothing you wouldn't do to protect them. We understand. We're parents too. That's why to help car seats stay secure, the OUTLOOK features Lower Anchorages and top Tethers for Children (LATCH) in the second-row outboard positions, as well as child security locks on the second-row doors.





## Good genes run in the family.

Say hello to our full line of vehicles, from the small and sporty to the midsize sedan and all the way to an 8-passenger crossover. To learn more, [visit saturn.com](http://www.saturn.com).



### FEEL FREE TO PICK A SATURN APART. (WE DID.)

Quality control is something everyone at Saturn takes seriously. In fact, they don't even need the words "Quality Control" in their job title to make it their number-one priority. It's the responsibility of everyone who touches a Saturn, from the people who design, engineer, assemble and test them to the people who hand you the keys. It's what makes a Saturn, well, a Saturn.

## The Saturn showroom has a very familiar address. Yours.

To schedule your at-home or in-office test drive, [visit saturn.com](http://www.saturn.com) to find a participating retailer near you.





Shown from left to right: OUTLOOK, ASTRA® 3-door, AURA™ SKY® (limited availability), ASTRA 5-door, VUE® (ASTRA available late 2007.)

# What if a car company didn't act like a car company?

You'd ask yourself, what are they thinking? This can't be right. But it is. In fact, it's what we've been doing since day one. That's the Saturn way. And you notice it the second you walk into a Saturn retailer. We offer a no-hassle, no-haggle philosophy. We give you straightforward answers. We bring cars to you to test-drive.<sup>1</sup> We give you 30 days to make sure the vehicle you've chosen is the right one.<sup>2</sup> And you know what? After all is said and done, we wouldn't change a single thing.

**Just something to rethink about.**

## A GREENER FOOTPRINT.

As if you didn't already have enough reasons to feel good about the Saturn OUTLOOK, it's built in a plant with a green approach to life cycle emissions. The Lansing, Michigan, plant received gold certification from the U.S. Green Building Council's Leadership in Energy and Environmental Design (LEED) program. It's the first automotive manufacturing plant in the world to accomplish this. Energy efficiency, conservation, and the reduction of CO<sub>2</sub> emissions are designed into every system. We've reduced water usage by 45% and lighting by 50%. Our roof is made of a special white polymer to reduce cooling costs. We've even set aside 75 acres for a wildlife habitat area. Because these days, it's not enough to just think green; we're acting green as well.



**SATURN** | **100,000 MILE WARRANTY**  
5-YEAR POWERTRAIN

The amount of care and attention doesn't end the moment you leave the Saturn retailer. You'll get the best coverage in America on all 2008 Saturn models: the Saturn 100,000-mile/5-year Powertrain Limited Warranty,<sup>3</sup> plus Roadside Assistance and Courtesy Transportation.<sup>4</sup>

### POWERTRAIN LIMITED WARRANTY

This fully transferable warranty is for 2008 Saturn vehicles registered in the U.S. See your Saturn retailer for terms and conditions. Covered for 5 years/100,000 miles (whichever comes first): most engine, transmission, transfer case and axle assemblies.

# 2008 Accessories



Cargo carrier

Assist steps

Hood protector

Splash guards

- Roof-mounted luggage cross rail package
- Assist steps – chrome
- 19" chrome wheels (2 styles)<sup>1</sup>
- Molded hood protector
- Fender flares
- Molded splash guards
- Side window weather deflectors – front & rear
- Premium all-weather floor mats
- Cargo-area floor mat
- Cargo-area tray
- Sunroof weather deflector
- Noise-canceling headphones
- Remote start
- Locking hitch pin
- Hitch-mounted bicycle carrier<sup>2</sup>
- Roof-mounted hard cargo carrier<sup>3</sup>
- Wheel locks
- Locking gas cap

**1** Use only GM-approved tire and wheel combinations. See your retailer for details. **2** Maximum trailer ratings are calculated assuming a properly equipped base vehicle, plus driver. **3** Requires available roof rack cross rails.

## OUTLOOK Specifications/Features

POWERTRAIN AND CHASSIS	XE FWD/AWD	XR FWD/AWD
Engine	3.6-liter, DOHC, 24-valve V6, VVT	3.6-liter, DOHC, 24-valve V6, VVT
Horsepower (hp/kW @ rpm)	270/201 @ 6,600	275/205 @ 6,600
Torque (lb.-ft./Nm @ rpm)	248/336 @ 3,200	251/340 @ 3,200
Transmission	6-speed automatic	6-speed automatic
Steering	Power rack-and-pinion	Variable-assist power rack-and-pinion
Drivetrain	FWD: Front-engine/front-wheel drive (XE FWD/XR FWD) AWD: Front-engine/all-wheel drive (XE AWD/XR AWD)	
Body Construction	Body-frame integral steel safety cage with front and rear crumple zones and side-impact protection	
Suspension	MacPherson strut front and direct acting stabilizer bar; linked H-arm independent rear	
Brakes	4-wheel disc brakes w/ABS, Brake Assist, and dynamic rear proportioning	

WEIGHTS AND CAPACITIES	XE FWD	XE AWD	XR FWD	XR AWD
Curb Weight (lbs.)	4,685	4,883	4,731	4,932
Passenger volume (cu. ft.)	153.6	153.6	153.6	153.6
Cargo-area volume with 2nd + 3rd rows folded/ 3rd row folded/behind 3rd row <sup>1</sup>	116.9/68.9/19.7	116.9/68.9/19.7	116.9/68.9/19.7	116.9/68.9/19.7
Fuel capacity (approx. gal.)	22.0	22.0	22.0	22.0
Towing capacity (max. lbs.) <sup>2</sup>	4,500	4,500	4,500	4,500
Seating capacity	8/7 <sup>3</sup>	8/7 <sup>3</sup>	8/7	8/7

INTERIOR DIMENSIONS (IN.)	XE FWD	XE AWD	XR FWD	XR AWD
Headroom (1st row/2nd row/3rd row)	40.4/39.3/38.4	40.4/39.3/38.4	40.4/39.3/38.4	40.4/39.3/38.4
Legroom (1st row/2nd row/3rd row)	42.3/36.9/33.2	42.3/36.9/33.2	42.3/36.9/33.2	42.3/36.9/33.2
Hip room (1st row/2nd row/3rd row)	58.0/57.9/48.3	58.0/57.9/48.3	58.0/57.9/48.3	58.0/57.9/48.3
Shoulder room (1st row/2nd row/3rd row)	62.0/61.1/57.8	62.0/61.1/57.8	62.0/61.1/57.8	62.0/61.1/57.8

FUEL ECONOMY ESTIMATES (CITY/HWY MPG) <sup>4</sup>	XE FWD	XE AWD	XR FWD	XR AWD
Automatic Transmission	16/24	16/22	18/24	16/22

COMFORT AND CONVENIENCE	XE FWD	XE AWD	XR FWD	XR AWD
Air conditioning w/manual controls	•	•	-	-
Front dual-zone automatic climate control	o <sup>5</sup>	o <sup>5</sup>	•	•
Rear heating/air conditioning with manual controls	•	•	•	•
Cruise control	•	•	•	•
Driver Information Center with outside temperature display	•	•	•	•
Preferred Package: 6-way power driver's seat, leather-wrapped steering wheel with audio controls, and luggage rack side rails	o <sup>6</sup>	o <sup>6</sup>	-	-
Convenience Package: remote vehicle starter system, heated windshield washer system, power rear liftgate, Ultrasonic Rear Parking Assist	o <sup>7</sup>	o <sup>7</sup>	o <sup>7</sup>	o <sup>7</sup>
Enhanced Convenience Package: 8-way power driver's seat w/memory, 4-way power passenger seat, memory package, outside heated power-adjustable, power-folding mirrors w/auto-dimming driver's side, power windows with driver express up and driver/front passenger express down	-	-	o <sup>8</sup>	o <sup>8</sup>
Front center console w/sliding armrest and storage and cargo area under floor storage	•	•	•	•
2nd-row center console with armrest, cupholders, power outlet and storage	-	-	o <sup>9</sup>	o <sup>9</sup>
Power windows and door locks and Remote Keyless Entry	•	•	•	•
Tilt and telescoping steering column	•	•	•	•
Steering-wheel-mounted audio controls	o <sup>10</sup>	o <sup>10</sup>	•	•
Programmable Universal Home Remote	-	-	•	•
Rear window defogger	•	•	•	•
Power-adjustable, heated side mirrors (with integrated turn signals and body color on XR models)	•	•	•	•
Touring Package: 19" polished alloy wheels, P255/60R19 tires, chrome exhaust tips	-	-	o	o
18" alloy wheels, P255/65R18-103S all-season blackwall tires and Tire Pressure Monitor	•	•	•	•
Rear intermittent wiper with washer	•	•	•	•
Power front sunroof w/rear seat fixed-glass panel skylight	o	o	o	o
Trailer Package: heavy-duty engine-cooling system, trailer harness hookup and trailer hitch	o	o	o	o
Solar-Ray deep-tinted 2nd-row, 3rd-row and rear glass	•	•	•	•
3-passenger cloth seating w/deluxe front buckets, 2nd-row split-folding 60/40 w/Smart Slide and 3rd-row 60/40-split bench	•	•	•	•
2nd-row captain's chairs w/Smart Slide	o <sup>11</sup>	o <sup>11</sup>	o <sup>11</sup>	o <sup>11</sup>
Premium Trim Package: leather-appointed 1st and 2nd row, and heated driver and front passenger seats	-	-	o	o
Leather-wrapped steering wheel	o <sup>12</sup>	o <sup>12</sup>	o	o
Metallic accent trim	•	•	-	-
Wood grain décor trim	-	-	•	•

SAFETY AND SECURITY	XE FWD	XE AWD	XR FWD	XR AWD
Dual-stage driver and front passenger air bags with Passenger Sensing System <sup>13</sup>	•	•	•	•
Side-impact air bags for driver and front passenger <sup>14</sup>	•	•	•	•
Head curtain side air bags with rollover protection for all 3 rows <sup>15</sup>	•	•	•	•
Height-adjustable front safety belts with pretensioners and energy-absorbing retractors	•	•	•	•
Lower Anchorage and top Tethers for Children (LATCH) in 2nd-row outboard seating positions	•	•	•	•
StabiliTrak <sup>®</sup> vehicle stability control system w/enhanced rollover protection and Traction Control	•	•	•	•
Projector-beam halogen headlamps with auto on/off control and daytime running lamps	•	•	•	•
High Intensity Discharge (HID) headlamps	-	-	o	o
Front foglamps	-	-	•	•
Security system and engine-immobilizing theft-deterrent feature	•	•	•	•
Child security locks	•	•	•	•
OnStar <sup>®</sup> with one-year Safe & Sound Plan <sup>16</sup>	•	•	•	•

ENTERTAINMENT SYSTEMS	XE FWD	XE AWD	XR FWD	XR AWD
AM/FM stereo w/MP3-compatible CD player and 6 speakers, seek and scan, digital clock, auto tone control, Radio Data System (RDS), speed-compensated volume and TheftLock <sup>®</sup>	•	•	•	•
Advanced Audio Package: rear audio controls, 10 speakers including subwoofer and amplifier, AM/FM stereo w/6-disc in-dash CD/MP3 changer and dual-zone automatic climate control	o <sup>17</sup>	o <sup>17</sup>	o <sup>17</sup>	o <sup>17</sup>
DVD-based Navigation System <sup>18</sup> w/AM/FM stereo w/MP3-compatible CD/DVD player, seek and scan, digital clock, auto tone control, Radio Data System (RDS), speed-compensated volume and TheftLock, voice recognition and Rearview Camera System	-	-	o <sup>14,15</sup>	o <sup>14,15</sup>
Rear-seat DVD player w/remote control, 8" diagonal display, 2 sets of wireless infrared headphones, auxiliary audio/video input jacks <sup>19</sup>	o	o	o	o
XM Satellite Radio with three-month trial service <sup>17</sup>	o	o	o	o

• = standard o = available - = not available

**1** Cargo and load capacity limited by weight and distribution. **2** With a properly equipped vehicle and appropriate trailer hitch. Maximum trailer ratings are calculated assuming a properly equipped base vehicle, except for any options necessary to achieve the rating, plus driver. The weight of other optional equipment, passengers and car will reduce the maximum trailer weight your vehicle can tow. See your Saturn retailer for details. **3** Late availability for 7-passenger seating on XE. **4** EPA estimates. **5** Included and only available with Advanced Audio Package. **6** Leather-wrapped steering wheel with audio controls late availability on XE. **7** Power rear liftgate only included on XR models. **8** Requires available Premium Trim Package and Convenience Package. **9** Requires 2nd-row captain's chairs. Late availability. **10** Part of Preferred Package. Late availability. **11** Cloth seating. Late availability. **12** See panel on the left for important information about air bags, including a note about child safety. **13** Call 1-888-4ONSTAR (1-888-469-7827), visit onstar.com or see panel on the left for system limitations and details. **14** 6-disc CD changer not available with Rear Seat DVD and/or Navigation System. Dual-zone climate control standard on XR. **15** Map coverage not available in Puerto Rico, Virgin Islands and portions of Canada. **16** Requires available Advanced Audio Package. **17** Available only in the 48 contiguous United States. Includes three months trial service. Required \$12.95 monthly subscription sold separately. All fees and programming subject to change. Subscription subject to customer agreement. For more information, visit gm.xmradio.com. **18** Platinum Ice Tricoat replaces White Diamond Tricoat mid-model year.

### IMPORTANT WORDS ABOUT THIS CATALOG

We have tried to make this catalog comprehensive and factual. We reserve the right, however, to make changes at any time, without notice, in prices, colors, materials, equipment, specifications, models and availability. Specifications, dimensions, measurements, ratings and other numbers in this catalog and other printed materials provided at the retailer or affixed to vehicles are approximate based upon design and engineering drawings and prototypes and laboratory tests. Your vehicle may differ due to variations in manufacture and equipment. Because some information may have been updated since the time of printing, please check with your Saturn retailer for complete details. Saturn reserves the right to shorten or extend the model year for any product for any reason, or to start and end model years at different times.

### A NOTE ABOUT AIR BAGS AND CHILD SAFETY

Always use safety belts and the correct child restraint for your child's age and size. Even in vehicles equipped with air bags and the Passenger Sensing System, children are safer when properly secured in a rear seat in an appropriate infant, child or booster seat. Never place a rear-facing infant restraint in the front seat of any vehicle equipped with an active frontal air bag. Air bag inflation can cause severe injury or death to anyone too close to the bag when it deploys. Be sure every occupant is properly restrained. See your vehicle owner's manual and child safety seat instructions for more information.

### ONSTAR<sup>®</sup> INFORMATION

OnStar services require vehicle electrical system (including battery), wireless service and GPS satellite signals to be available and operating for features to function properly. OnStar acts as a link to existing emergency service providers. Subscription Service Agreement required. Call 1-888-4ONSTAR (1-888-469-7827) or visit onstar.com for OnStar's Terms and Conditions, Privacy Policy, and system limitations and details.

### SATURN'S VEHICLE EXCHANGE PROGRAM

Within the first 30 days or 1,500 miles of delivery, whichever comes first, the original purchaser may exchange his or her Saturn vehicle if not completely satisfied. In the event that an owner returns his or her vehicle, he or she will exchange it for another 2008 Saturn vehicle. See retailer for limitations and restrictions. All the same factory-supported initiatives will be included on the exchange vehicle that were on the original vehicle. The vehicle must be returned in the condition in which it was delivered, without damage or excessive wear and tear. If non-warranty repairs equal to or greater than \$300 have been performed or are necessary, the vehicle is not eligible to be returned. If less than \$300, the damage must be repaired or the estimate deducted from the credit toward the exchange vehicle.

### NEW VEHICLE LIMITED WARRANTY

This warranty is for Saturn vehicles registered in the United States. See your Saturn retailer for terms and conditions. Covered for 3 years/36,000 miles (whichever comes first), the complete vehicle, lines, towing to your nearest Saturn retailer, cosmetic corrosion resulting from defects, repairs made to correct any vehicle defect, with no charge for most warranty repairs. Covered for 6 years/100,000 miles (whichever comes first), rust-through corrosion. Covered for 8 years/100,000 miles (whichever comes first), certain hybrid components. See retailer for details.

### CORROSION PROTECTION

Saturn vehicles are designed and built to resist corrosion. All body and sheet metal components are warranted against rust-through corrosion for 6 years or 100,000 miles, whichever comes first. Application of additional rust-inhibiting materials is not required under the corrosion coverage and none is recommended. See your Saturn retailer for terms of this limited warranty.

### AN IMPORTANT NOTE ABOUT ALTERATIONS AND WARRANTIES

Installations or alterations to the original equipment vehicle (or chassis) as distributed by GM are not covered by the Saturn New Vehicle Limited Warranty. The special body company, assembler, equipment installer or upfitter is solely responsible for warranties on the body or equipment and any alterations (or any effect of the alterations) to any of the parts, components, systems or assemblies installed by GM. GM is not responsible for the safety or quality of design features, materials or workmanship of any alterations by such suppliers.

### ASSEMBLY

Saturn vehicles and their components are assembled or produced by different operating units of GM, its subsidiaries or suppliers to GM worldwide. We sometimes find it necessary to produce Saturn vehicles with different or differently sourced components than originally scheduled. Because some options may be unavailable when your vehicle is assembled, we suggest you verify that your vehicle includes the equipment you ordered, or if there are changes, that they are acceptable to you.

### ENGINES

Saturn products are equipped with engines produced by GM Powertrain or other suppliers to GM worldwide. The engines in Saturn products may also be used in other GM makes and models.

### FUEL ECONOMY

Conforming with 2008 model-year vehicles, EPA revised its methods for estimating vehicle fuel economy. The new test methods will likely lower mpg estimates as compared to 2007 and previous model-year vehicles. These new methods are intended to better represent current driving styles, varying road and weather conditions, and certain other external factors.

### UPDATED SERVICE INFORMATION

Saturn retailers receive useful service bulletins about Saturn products. See your retailer for more information.

### GM MOBILITY

GM Mobility assists people with unique transportation needs by offering a variety of resources, including aftermarket adaptive equipment. Speak to a knowledgeable Assistance Center representative at 1-800-323-9925 (TTY users: 1-800-833-9939) or visit gm-mobility.com for more information.

## Exterior Paint



Cream White



Silver Pearl



Midnight Blue



Gold Mist



Cocoa



Ocean Mist



Red Jewel Tintcoat\*



White Diamond Tricoat\*\*



Carbon Flash\*



Platinum Ice Tricoat\*\*

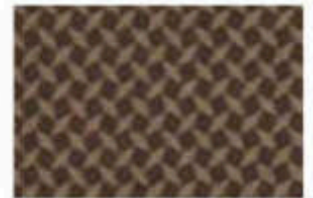


Garnet

## Standard Interior Fabrics



XE/XR Gray



XE/XR Tan

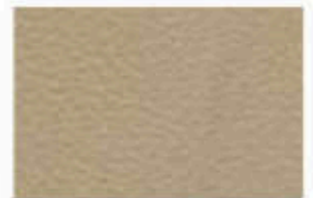


XE/XR Black

## Available Interior Leathers



XR Gray Leather



XR Tan Leather



XR Black Leather

## Color Combinations

EXTERIOR PAINT	CLOTH: XE	CLOTH: XR	AVAILABLE LEATHER: XR
Cream White	Gray/Tan/Black	Gray/Tan/Black	Gray/Tan/Black
Silver Pearl	Gray/Tan/Black	Gray/Tan/Black	Gray/Tan/Black
Midnight Blue	Gray/Tan/Black	Gray/Tan/Black	Gray/Tan/Black
Gold Mist	Tan/Black	Tan/Black	Tan/Black
Cocoa	Tan/Black	Tan/Black	Tan/Black
Ocean Mist	Gray/Tan/Black	Gray/Tan/Black	Gray/Tan/Black
Red Jewel Tintcoat*	Tan/Black	Tan/Black	Tan/Black
White Diamond Tricoat**	Gray/Tan/Black	Gray/Tan/Black	Gray/Tan/Black
Carbon Flash*	Gray/Tan/Black	Gray/Tan/Black	Gray/Tan/Black
Platinum Ice Tricoat**	Gray/Tan/Black	Gray/Tan/Black	Gray/Tan/Black
Garnet	Gray/Tan/Black	Gray/Tan/Black	Gray/Tan/Black

\*Available at additional charge.

## Dimensions



## Wheels



**18" STANDARD PAINTED ALLOY**  
(XE FWD/AWD)



**18" STANDARD MACHINED ALLOY**  
(XR FWD/AWD)



**19" POLISHED ALLOY**  
(Optional on XR)

See all of our vehicles at [SATURN.COM](http://SATURN.COM)

**SKY**  
Roadster

**ASTRA**  
Sport Compact

**AURA**  
Sport Sedan

**VUE**  
Compact SUV

**OUTLOOK**  
Crossover

# Saturn 2008 **OUTLOOK**

**Rethink American**



This brochure is printed on 60-lb. Environment Ultra Bright FSC-Certified Paper made with 20% FSC-Certified Virgin Fiber and **80% Post-Consumer Fiber**. The paper comes entirely from Green-e Certified renewable energy, and it's Green Seal-Certified as well as Certified Processed Chlorine-Free (PCF) by the Chlorine Free Product Association (CFPA). **It represents Saturn's commitment to helping the environment.**

