

It's nothing an extra door can't handle.

Three-door coupe





The world's first three-door coupe, newly restyled.



Three doors have never been so (dare we say it?) sexy.



A Saturn with sex appeal. Now, that's newsworthy. Don't get us wrong. When we introduced the world's first three-door coupe last year,

it was one good-looking machine.

But this year, thanks to a major makeover, the car's significantly sleeker, sportier and—well, sexier. Its upswept

bodyside styling, reflector-optics head-

lights and wraparound tail lights combine to give it a strong, sweeping look. To help keep the interior cool (and who won't appreciate



that on a sizzling summer afternoon?), there's special solar glass. There's also a lot that doesn't meet the eye, like a

torque-heavy, 1.9-liter dual-overhead-cam engine, five-speed manual transmission and four-wheel independent suspension for those scenic

but snaking mountain roads.

All in all, our coupe's a car with plenty of style—and the substance to back it up.



A better way to get you and your stuff in and out.



The third door on our three-door coupe means you don't have to be a contortionist to load and unload the back seat like you do with traditional two-doors.

All kinds of cargo goes in with a lot less effort. One-of-a-kind

chairs, backpacks, grocery bags, laundry—you name it. Passengers slide in, too, which minimizes their grumbling and

makes for a more pleasant ride all around. Not only is the car easier to get in, it's easier to stay in. With an interior featuring more intuitive instrumentation, a



"Change Oil Soon" light, a

generous allotment of cupholders and a sweet-

sounding audio system, you may be reluctant to pull into the driveway. The newly restyled three-door coupe from Saturn. It's living proof that a (gulp) sexy car can have a pragmatic side.





SC1 Coupe

STANDARD FEATURES

- Dent/corrosion-resistant bodyside panels
- Color-coordinated bumper fascias
- Halogen headlights
- Dual exterior mirrors
- Rear spoiler
- Reduced Force Air Bags*
- Engine-immobilizing theft-deterrent system
- Intermittent windshield wipers
- Adjustable steering column
- Reclining front bucket seats with integrated headrests
- Storage pockets built into front door panels
- Rear console with two cupholders and storage
- 60/40-split folding rear seatbacks
- Secure trunk feature (Locking rear seatbacks and trunklid-release disable. Accessory valet key available.)
- AM/FM stereo with clock and four speakers
- Passenger-side visor vanity mirror
- Rear window defogger with timer
- Automatic dimming three-way dome and cargo-area lights
- Remote hood, trunklid and fuel-filler door releases
- Speedometer, tachometer, digital trip odometer, coolant-temperature and fuel-level gauges
- Oil-life monitor
- Tinted and heat-repelling glass

SC1 OPTIONS

- 15-inch alloy wheels with touring tires
- Air conditioning with CFC-free refrigerant
- Anti-lock Braking System with Traction Control
- AM/FM stereo with CD and four coaxial speakers
- AM/FM stereo with cassette and four coaxial speakers**
- AM/FM stereo with CD/cassette and four coaxial speakers**
- Automatic transmission
- Floor mats
- Power sunroof
- SC1 Option Package: air conditioning, cruise control, power exterior mirrors, power windows with driver express-down and Saturn Security System^

SC2 Coupe

INCLUDES ALL SC1 STANDARD FEATURES PLUS

- Air conditioning with CFC-free refrigerant
- Rear spoiler
- Color-coordinated exterior mirrors
- Foglamps
- Adjustable lumbar support and cushion height on driver's seat
- Front passenger-side seatback storage pocket
- Height-adjustable headrests
- Leather-wrapped steering wheel
- Sport-tuned suspension with front and rear stabilizer bars
- Vehicle-speed-sensitive, variable-effort power steering
- Front center console adjustable armrest and storage

SC2 OPTIONS

- 15-inch alloy wheels
- Anti-lock Braking System with Traction Control
- AM/FM stereo with CD and four coaxial speakers
- AM/FM stereo with cassette and four coaxial speakers**
- AM/FM stereo with CD/cassette and four coaxial speakers**
- Automatic transmission
- Floor mats
- Power sunroof
- Leather Appointments^^
- SC2 Option Package: cruise control, power exterior mirrors, power windows with driver express-down, Saturn Security System^ and 15-inch alloy wheels

SPECIFICATIONS	SC1	SC2
TECHNICAL/PERFORMANCE		
Engine	1,901 cc, SOHC, 8-valve, inline-4, alloy block and head	1,901 cc, DOHC, 16-valve, inline-4, alloy block and head
Horsepower	100 @ 5,000 rpm	124 @ 5,600 rpm
Torque (ft. lbs.)	114 @ 2,400 rpm	122 @ 4,800 rpm
Transmission (standard)	5-speed manual	5-speed manual
Transmission (optional)	4-speed automatic	4-speed automatic
EXTERIOR DIMENSIONS (INCHES)		
Wheelbase	102.4	102.4
Overall length	180.5	180.5
Overall width	68.2	68.2
Overall height, unloaded	53.0	53.0
Track (front/rear)	56.8/56.0	56.8/56.0
Curb weight (lbs.) [†]		
Manual/Automatic	2,367/2,396	2,436/2,463
INTERIOR DIMENSIONS FRONT/REAR (INCHES)		
Headroom	38.6/35.8	38.6/35.8
Legroom	42.6/31.0	42.6/31.0
EPA cargo volume (cu. ft.)	11.4	11.4
EPA MILEAGE ESTIMATES** (CITY/HIGHWAY/MPG)		
Manual transmission	28/40	27/38
Automatic transmission	27/36	25/36

[†] With air conditioning.

** Actual mileage may vary with driving conditions—use for comparison only.

CLASS	
DRIVETRAIN	Front engine/front-wheel drive with equal-length driveshafts (SC1/SC2)
BODY CONSTRUCTION	Galvanized steel spaceframe (SC1/SC2)
EXTERIOR PANELS	Polymer front fenders, door panels, rear quarter panels and bumper fascias; galvanized steel hood and roof; steel trunklid; polymer rear spoiler (SC1/SC2)
SUSPENSION	Front: independent, MacPherson strut, lateral-link and stabilizer bar; Rear: independent tri-link with strut/spring module; Sport-tuned: specific strut/spring tuning with larger front stabilizer bar (SC2 only)
STEERING, RACK-AND-PINION	Constant-flow, power-assisted (SC1); vehicle-speed-sensitive, variable-effort power-assisted (SC2)
BRAKES	Power-assisted, ventilated front disc/rear drum; Anti-lock Braking System with Traction Control (optional on SC1/SC2)

*Always use safety belts and proper child restraints, even with Reduced Force Air Bags. Children are safer when properly secured in a rear seat. For more Saturn safety information, see the Owner's Handbook.

** Includes automatic tone control and theft protection.

^ Power door locks with anti-lockout feature, remote keyless entry system with alarm activation, panic/alert mode, door alarm and power trunklid release.

^^ Leather-trimmed seats and leather-wrapped parking brake grip, gearshift knob and steering wheel. Requires option package.



COLORS	Exterior	Standard Cloth	Optional Leather
SC1	Blackberry Blue Gold Green Light Silver Red White	Grey or Black Grey or Black Black Black Grey or Black Grey or Black Grey or Black	
SC2	Blackberry Blue Gold Green Light Silver Red White Yellow*	Black or Grey Black or Grey Black or Tan Black or Tan Black or Grey Black, Grey or Tan Black or Grey Black	Black or Grey Grey Black or Tan Tan Black or Grey Black, Grey or Tan Black or Grey Black

FABRIC

SC1

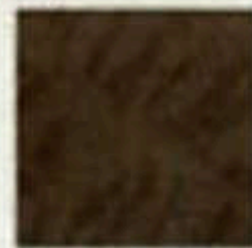


Grey

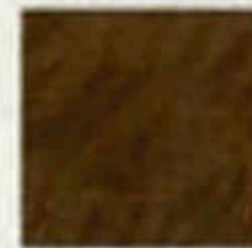


Black

SC2



Grey



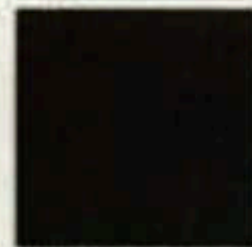
Tan



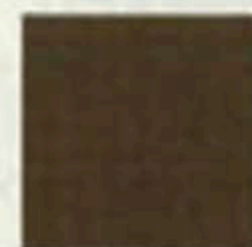
Black

LEATHER

SC2



Black



Grey



Tan

*Available for a limited time. Includes Black/Chrome exterior badging. Only available with Black cloth or Black Leather Appointments. Requires option package. (SC2 only)



SC1—Standard Cover



SC1—Optional Alloy Wheel



SC2—Standard Cover



SC2—Optional Alloy Wheel



A Different Kind of Company. A Different Kind of Car.

Visit us at www.saturn.com.

We have tried to make this brochure as comprehensive and factual as possible. We reserve the right, however, to make changes at any time, without notice, in colors, materials, equipment, specifications, models, model years and availability. Since some information may have been updated since the time of printing, please contact your Saturn retailer or call the Saturn Assistance Center at 1-800-522-5300 for complete details. ©1999 Saturn Corporation. (SCFULFIL) 12/99