

SKY



ASTRA 3-Door



AURA



VUE



VUE Red Line



OUTLOOK



SKY Red Line



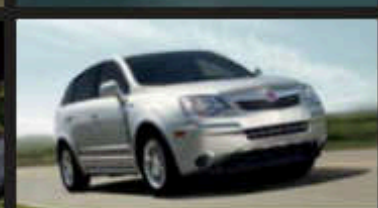
ASTRA 5-Door



AURA Hybrid



VUE Hybrid



VUE 2-Mode Hybrid



SATURN  
HYBRID

Rethink green. The AURA Hybrid,  
VUE Hybrid and VUE 2-Mode Hybrid.  
(limited availability)

See all our vehicles at [saturn.com](http://saturn.com)



09 Saturn Collection



The philosophy of Rethink has been ours since day one. Rethink is treating customers like people. Rethink is buying made easy. Rethink is style made accessible. Rethink is a greener approach. **Rethink is hybrid technology. Rethink is always pushing yourself to come up with a better idea. Rethink is Saturn.**



**Saturn's commitment to helping the environment**

Our devotion doesn't stop at building responsible transportation. We're also doing the little things, like printing this brochure on FSC-certified (Forest Stewardship Council) paper, which includes a minimum of 30% post-consumer recovered fiber. Additionally, electricity used in the manufacturing process is generated from renewable resources. Please help us out and recycle this brochure when you're done.



Rethink choices. The AURA Sport Sedan that gets everything right, the VUE Compact Crossover that's available as a hybrid (limited availability), the ASTRA Sport Compact that's ridiculously fun to drive, the exhilarating SKY Roadster, and the OUTLOOK Crossover that seats eight—all from the company that's rethinking everything. Take a closer look to discover which Saturn is right for you.



**Powertrain Warranty**

Every 2009 Saturn gets the best coverage in America: the Saturn 100,000-mile/5-year<sup>1</sup> Transferable Powertrain Limited Warranty, plus Roadside Assistance and Courtesy Transportation.

<sup>1</sup> Whichever comes first. See retailer for details.



EPA-estimated **33** mpg highway

AURA XE in Red Jewel Tintcoat

## AURA Sport Sedan

**Rethink sedan.** The AURA. We've rethought the sport sedan by making one with a fuel-efficient 4-cylinder that offers an EPA-estimated 33 mpg highway. The AURA offers best-in-class highway fuel economy<sup>1</sup> and still has all the room, comfort, and style you want. With other powertrain choices that include a 252-horsepower V6 and one of the most affordable midsize hybrid sedans<sup>2</sup> (limited availability), it's the sport sedan from the company that's rethinking everything.



### Rethink retreat

We'll keep everything quiet. You just relax. The cabin in the AURA is exceptionally quiet, comfortable, and tastefully done. It surrounds you with premium tactile surface materials, and we even wrapped the AURA's interior pillars in fabric for an added level of refinement. Intricate stitching details accent the generous leather-appointed seats, which are standard on the XR 4-cylinder and V6.

### 5-star crash safety rating<sup>3</sup>

The AURA received the highest possible crash safety rating—5 stars—in frontal and side-impact crash testing.<sup>3</sup> It also has over 95 standard safety features, like six standard air bags,<sup>4</sup> four-wheel disc anti-lock brakes, daytime running lamps, and a Tire Pressure Monitor.

<sup>1</sup> Based on 2008 GM Mid-Car Sedan segment and EPA-est. 33 mpg hwy (gas), 34 mpg hwy (hybrid). Excludes other GM vehicles. <sup>2</sup> Based on base MSRP and the 2008 GM Mid-Car Sedan segment. Level of equipment varies. Tax, title, license, retailer fees and optional equipment extra. <sup>3</sup> Side-impact crash test rating is for a model tested with standard head curtain side air bags (SABs). Government star ratings are part of the National Highway Traffic Safety Administration's (NHTSA's) New Car Assessment Program ([www.safercar.gov](http://www.safercar.gov)). <sup>4</sup> Always use safety belts and the correct child restraint for your child's age and size. Even in vehicles equipped with air bags and the Passenger Sensing System, children are safer when properly secured in a rear seat in the appropriate infant, child or booster seat. See owner's manual for more information.

## VUE Compact Crossover

**Rethink having it all.** The VUE. It gives you a lot to love. It is a great-looking, great-driving crossover with an array of powertrain choices, including all-wheel drive and hybrid. Choose our fuel-efficient 4-cylinder engine<sup>1</sup> with front-wheel drive, available in both the XE and the premium XR trim levels. For more performance, we offer a 257-hp V6 that powers both the XR and sporty Red Line. The VUE also offers two hybrids: our smart and unique 4-cylinder hybrid (limited availability), which offers the highest highway fuel economy of any compact crossover,<sup>2</sup> and our no-compromise 2-Mode V6 (limited availability beginning spring 2009).



### 5-star crash safety rating<sup>3</sup>

The VUE received the highest possible crash safety rating—5 stars—in frontal and side-impact crash testing.<sup>3</sup> It has 137 standard safety features, like six standard air bags,<sup>4</sup> four-wheel disc anti-lock brakes, daytime running lamps, and a Pedal Release System that helps reduce the chance of lower-extremity injuries to the driver. The VUE even earned an IIHS "Top Safety Pick" in 2008.

<sup>1</sup> EPA-est. 19 mpg city, 26 mpg hwy. <sup>2</sup> Based on the 2008 GM Compact Utility-Crossover segment and EPA-est. 32 mpg hwy. <sup>3</sup> Side-impact crash test rating is for a model tested with standard head curtain side air bags (SABs). Government star ratings are part of the National Highway Traffic Safety Administration's (NHTSA's) New Car Assessment Program ([www.safercar.gov](http://www.safercar.gov)). <sup>4</sup> Always use safety belts and the correct child restraint for your child's age and size. Even in vehicles equipped with air bags and the Passenger Sensing System, children are safer when properly secured in a rear seat in the appropriate infant, child or booster seat. See owner's manual for more information.



VUE XR-4 in Black Onyx

EPA-estimated **26** mpg highway



**Rethink being responsible. Saturn offers the AURA Hybrid and a choice of two different hybrid systems on the VUE. The 4-cylinder VUE Hybrid offers the highest highway fuel economy of any compact crossover,<sup>1</sup> and the VUE 2-Mode Hybrid gives you the full power and towing capability of a V6. The VUE and AURA Hybrids are available in limited numbers and the VUE 2-Mode Hybrid will have limited availability beginning spring 2009.**



#### **AURA and VUE Hybrid Technology**

Our unique and smart hybrid system mates an electric motor/generator to the 2.4-liter, 4-cylinder engine with a modified automatic transmission. With low-rolling-resistance tires and a nickel-metal hydride hybrid battery, the VUE Hybrid offers an EPA-estimated 25 mpg city, 32 mpg highway, and the AURA Hybrid offers an EPA-estimated 26 mpg city, 34 mpg highway.



#### **VUE 2-Mode Hybrid Technology**

The all-new 2009 Saturn VUE 2-Mode Hybrid is hard-working and smart. The first mode operates at low speeds with light loads and works in one of three ways: all-electric, internal combustion engine, or a combination of the two. The second mode is used primarily at highway speeds, and it provides electric assist in addition to 6-cylinder power when conditions demand it, such as trailer towing or climbing steep hills.

# Saturn Hybrid



VUE Hybrid in Quicksilver

EPA-estimated **32** mpg highway

<sup>1</sup> Based on the 2008 GM Compact Utility-Crossover segment and EPA-est. 32 mpg hwy.



EPA-estimated **32** mpg highway

ASTRA 3-Door XR in Black Sapphire

## ASTRA Sport Compact

Rethink amusement. The ASTRA. The ridiculously fun-to-drive sport compact. We've rethought the sport compact by making it functional and stylish with a 1.8-liter ECOTEC™ engine that offers an EPA-estimated 32 mpg highway. Available in two hatchback body styles, a 3-Door and a 5-Door, the ASTRA is a sleek, curve-hungry car that's big on connecting you to the road. Sure, it offers room for five, but it's the German-engineered performance that will really make your hands sweat and your foot twitch.



### Reliable response

The ASTRA is tuned to deliver a smooth, refined ride with tight handling and solid on-center feel. Four-wheel disc brakes, a MacPherson strut front suspension, torsion beam rear suspension, and a quick-reacting electro-hydraulic steering system give it a responsive and stable driving character that keeps you in command. To help keep you safe, it comes standard with frontal air bags,<sup>1</sup> front side-impact air bags that help protect your pelvis and thorax, head curtain side air bags for added head protection, active front head restraints that help reduce the chance of neck injuries, and a Pedal Release System that helps reduce the chance of lower-extremity injuries to the driver.



### Breathing room

Look good, feel good, and watch the world go by through an available sunroof that's the largest in its class.<sup>2</sup> If you upgrade to the available Premium Trim Package,<sup>3</sup> you get leather seat surfaces, a leather-wrapped steering wheel, a driver's seat lumbar adjuster, heated front seats, and interior ambient LED lighting. The rear 60/40-split seatbacks fold nearly flat via a single touch of an easy-access lever to reveal major space. With the rear seats up, conceal your stuff with the standard rear cargo cover.

<sup>1</sup> Always use safety belts and the correct child restraint for your child's age and size. Even in vehicles equipped with air bags and the Passenger Sensing System, children are safer when properly secured in a rear seat in the appropriate infant, child or booster seat. See owner's manual for more information. <sup>2</sup> Based on 5-Door model and 2008 GM Specialty Small Car segment. <sup>3</sup> Available on XR models only.

## OUTLOOK Crossover

**Rethink big.** The OUTLOOK. The EPA-estimated 24 mpg highway, 8-passenger vehicle. It offers the best fuel economy of any 8-passenger crossover.<sup>1</sup> It's even built in a plant that received gold certification from the U.S. Green Building Council's LEED program.<sup>2</sup> With plenty of room for everyone and their stuff and topped with a lot of style, it's the right-sized crossover from the company that's rethinking everything.



### Rethink people mover

The OUTLOOK doesn't sacrifice style for lifestyle. The XR models feature standard premium leather-appointed seats, and every OUTLOOK offers a range of seating choices, like a second-row split bench seat and available captain's chairs—both with Smart Slide,<sup>3</sup> which provides easy access to the adult-sized third row and plenty of second- and third-row legroom flexibility.

### 5-star crash safety rating<sup>3</sup>

The OUTLOOK received the highest possible crash safety rating—5 stars—in frontal and side-impact crash testing.<sup>3</sup> It has a total of six standard air bags,<sup>4</sup> as well as GM's rollover sensing system, which can preemptively activate head curtain side air bags if sensors determine a rollover is imminent, keeping them inflated for an extended length of time. Its technology is designed to help keep your most precious cargo safe and secure.

<sup>1</sup> Based on 2008 GM Mid-Utility-Crossover segment and EPA-est. 17 mpg city, 24 mpg hwy. Excludes other GM vehicles. <sup>2</sup> U.S. Green Building Council's Leadership in Energy and Environmental Design (LEED) program. <sup>3</sup> Side-impact crash test rating is for a model tested with standard head curtain side air bags (SABs). Government star ratings are part of the National Highway Traffic Safety Administration's (NHTSA's) New Car Assessment Program ([www.safercar.gov](http://www.safercar.gov)). <sup>4</sup> Always use safety belts and the correct child restraint for your child's age and size. Even in vehicles equipped with air bags and the Passenger Sensing System, children are safer when properly secured in a rear seat in the appropriate infant, child or booster seat. See owner's manual for more information.



OUTLOOK XR in White Diamond Tricoat with accessory assist steps

EPA-estimated **24** mpg highway



EPA-estimated **28** mpg highway

SKY Red Line in Black Onyx with available spoiler

## SKY Roadster

Rethink adrenaline. The SKY. The wildly exciting roadster. It's high performance and high style without the high price. With an available 260-hp turbocharged engine that offers best-in-class highway fuel economy,<sup>1</sup> a near 50/50 weight distribution, and a suspension that successfully balances handling and comfort, this head-turner is ready for anyone who wants to have fun and let the sun shine in.



### Rethink cockpit

Our designers made sure the interior of the SKY looks sharp and feels good, with big, bold, motorcycle-inspired instrumentation, piano-black accents, and bolstered sport seats that help you feel secure and comfortable. The available Monsoon<sup>®</sup> audio system, with XM Radio,<sup>2</sup> is specifically tuned to the acoustic environment of the SKY, while an available USB port allows you to connect and control select iPod<sup>®</sup> devices through the radio controls, and even show playlists on the SKY's audio system display.

### Tested street credentials

We designed the SKY with everything it takes to be the definitive roadster: high-performance Goodyear<sup>®</sup> tires, pedals set for heel/toe shifting, an available performance-tuned suspension, Bilstein<sup>™</sup> coil-over monotube shocks, and hydraulically assisted rack-and-pinion power steering.

<sup>1</sup> Based on 2008 GM Sport 2-Seat Regular segment and EPA-est. 28 mpg hwy. Excludes other GM vehicles. <sup>2</sup> Available in the 48 contiguous United States. Required \$12.95 monthly subscription sold separately after three trial months. All fees and programming subject to change. Subscription subject to customer agreement. For more information, visit gm.xmradio.com. <sup>3</sup> USB port late availability. Not all iPod devices are compatible. Please ask your retailer for a list of compatible players. iPod is a trademark of Apple Inc., registered in the U.S. and other countries.

Rethink ownership. Saturn is much more than simply a car that you love to drive. It's a service experience that you feel good about, a community of drivers who share your interests, and the vehicle accessories that suit your lifestyle. It's about all of the things that make a Saturn your Saturn. Visit [saturn.com](http://saturn.com) and click on the My Saturn button for more information.



#### OnStar<sup>®</sup>

Every 2009 Saturn includes a one-year subscription to the OnStar Safe & Sound Plan.<sup>1</sup> Beyond our standard safety and security features, you get monthly vehicle diagnostic reports via email, as well as Roadside Assistance. OnStar can even flash your lights and sound your horn if you can't find your vehicle. You can easily connect with an Advisor who can unlock your door or help authorities locate your vehicle if it is stolen.<sup>2</sup> With the available Directions & Connections Plan, you get OnStar Turn-by-Turn Navigation,<sup>3</sup> which is the simplest and smartest navigation system. Simply push the blue OnStar button and tell the Advisor where you want to go to receive automated voice-guided directions.

#### Satellite radio

XM Radio is standard,<sup>4</sup> including three trial months of service. XM turns your world on with commercial-free music channels for virtually every music genre, all in amazing digital sound. Turn on your favorite sports, plus the biggest names in news, talk, comedy and family programming, wherever you go from coast to coast.

#### Bluetooth wireless technology

Our comprehensive, convenient, and easy-to-use in-vehicle technology allows you to connect select Bluetooth<sup>®</sup> compatible cell phones to many Saturn models for hands-free calling.

#### iPod/MP3 player

The audio system in most Saturn models has an iPod<sup>®</sup>/MP3 auxiliary input jack or available USB port. Both connect select iPod devices<sup>5</sup> to your vehicle, plus the USB port even allows you to control the device through the steering wheel controls and show playlists on the vehicle's audio system display.

#### IMPORTANT WORDS ABOUT THIS CATALOG

We have tried to make this catalog comprehensive and factual. We reserve the right, however, to make changes at any time, without notice, in prices, colors, materials, equipment, specifications, models and availability. Specifications, dimensions, measurements, ratings, and other numbers in this catalog and other printed materials provided at the retailer or affixed to vehicles are approximates based upon design and engineering drawings and prototypes and laboratory tests. Your vehicle may differ due to variations in manufacturer and equipment. Certain vehicle features may lose their usefulness over time due to obsolescence from technical changes. Because some information may have been updated since the time of printing, please check with your Saturn retailer for complete details. Saturn reserves the right to lengthen or shorten the model year for any product for any reason, or to start and end model years at different times.

#### A NOTE ABOUT AIR BAGS AND CHILD SAFETY

Always use safety belts and the correct child restraint for your child's age and size. Even in vehicles equipped with air bags and the Passenger Sensing System, children are safer when properly secured in a rear seat in an appropriate infant, child or booster seat. Never place a rear-facing infant restraint in the front seat of any vehicle equipped with an active frontal air bag. Air bag inflation can cause severe injury or death to anyone too close to the bag when it deploys. Be sure every occupant is properly restrained. See your vehicle owner's manual and child-safety seat instructions for more information.

#### NEW VEHICLE LIMITED WARRANTY

This warranty is for Saturn vehicles registered in the United States. See your Saturn retailer for terms and conditions. Covered by the best coverage in America: the Saturn 100,000-mile/5-year (whichever comes first) Transferable Powertrain Limited Warranty, plus Roadside Assistance and Courtesy Transportation. Covered for 3 years/36,000 miles (whichever comes first): the complete vehicle, tires, towing to your nearest Saturn retailer, cosmetic corrosion resulting from defects, repairs made to correct any vehicle defect, with no charge for most warranty repairs. Covered for 8 years/100,000 miles (whichever comes first): certain hybrid components. See retailer for details.

#### SATURN'S VEHICLE EXCHANGE PROGRAM

Within the first 30 days or 1,500 miles of delivery, whichever comes first, the original purchaser may exchange his or her Saturn vehicle if not completely satisfied. In the event that an owner returns his or her vehicle, he or she will exchange it for another new 2008 or 2009 Saturn vehicle. See retailer for limitations and restrictions. The vehicle must be returned in the condition in which it was delivered, without damage or excessive wear and tear. If non-warranty repairs equal to or greater than \$300 have been performed or are necessary, the vehicle is not eligible to be returned; if less than \$300, the damage must be repaired or the estimate deducted from the credit toward the exchange vehicle.

#### AN IMPORTANT NOTE ABOUT ALTERATIONS AND WARRANTIES

Installations or alterations to the original equipment vehicle (or chassis) as distributed by GM are not covered by the Saturn New Vehicle Limited Warranty. The special body company, assembler, equipment installer or upfitter is solely responsible for warranties on the body or equipment and any alterations (or any effect of the alterations) to any of the parts, components, systems or assemblies installed by GM. GM is not responsible for the safety or quality of design features, materials or workmanship of any alterations by such suppliers.

#### ASSEMBLY

Saturn vehicles and their components are assembled or produced by different operating units of GM, its subsidiaries or suppliers to GM worldwide. We sometimes find it necessary to produce Saturn vehicles with different or differently sourced components than originally scheduled. Because some options may be unavailable when your vehicle is assembled, we suggest you verify that your vehicle includes the equipment you ordered, or if there are changes, that they are acceptable to you.

#### ONSTAR<sup>®</sup> INFORMATION

OnStar services require vehicle electrical system (including battery), wireless service and GPS satellite signals to be available and operating for features to function properly. OnStar acts as a link to existing emergency service providers. Subscription Service Agreement required. Call 1-888-4ONSTAR (1-888-466-7827) and visit [onstar.com](http://onstar.com) for OnStar's Terms and Conditions, Privacy Policy, details and system limitations.

#### ENGINES

Saturn products are equipped with engines produced by GM Powertrain or other suppliers to GM worldwide. The engines in Saturn products may also be used in other GM makes and models.

#### GM CARD

What you spend each day can help toward the purchase or lease of a new Saturn. With three different reward cards to choose from and over 50 eligible new GM vehicles, there are plenty of reasons to get excited about what your reward could be. Apply for a GM Reward MasterCard and start saving for your new ride today. Visit [gmcardmemberservices.com](http://gmcardmemberservices.com) for more details.

©2008 Saturn Corporation. Saturn and its logo are registered trademarks of Saturn Corporation. AURA and OUTLOOK are trademarks, and SKY, ASTRA, and VUE are registered trademarks of Saturn Corporation.



<sup>1</sup> Call 1-888-4ONSTAR (1-888-466-7827), visit [onstar.com](http://onstar.com), and see inside back cover for details and system limitations. <sup>2</sup> Remote Door Unlock and Stolen Vehicle Location Assistance success may vary with conditions. <sup>3</sup> Not available in certain areas. Visit [onstar.com](http://onstar.com) for coverage map. <sup>4</sup> Not available on ASTRA. Available in the 48 contiguous United States. Required \$12.95 monthly subscription sold separately after three trial months. All fees and programming subject to change. Subscription subject to customer agreement. For more information, visit [gm.xmradio.com](http://gm.xmradio.com). <sup>5</sup> The Bluetooth trademark is owned by Bluetooth SIG, Inc., and any use of such marks by General Motors is under license. Go to [www.gm.com/bluetooth](http://www.gm.com/bluetooth) to find out which Bluetooth phones are compatible with the vehicle. <sup>6</sup> iPod is a trademark of Apple Inc., registered in the U.S. and other countries. <sup>7</sup> USB port, late availability on SKY and AURA, and not available in ASTRA. Not all MP3 devices are compatible. Please ask your retailer for a list of compatible players.