

09 Saturn SKY



The philosophy of Rethink has been ours since day one. Rethink is treating customers like people. Rethink is buying made easy. Rethink is style made accessible. Rethink is a greener approach. Rethink is remarkably fuel-efficient vehicles. Rethink is always pushing yourself to come up with a better idea. Rethink is Saturn.



FSC

Mixed Sources

Product group from well-managed forests, controlled sources and recycled wood or fiber

For more information, visit www.fsc.org

© 2004 Forest Stewardship Council

Saturn's commitment to helping the environment

Our devotion doesn't stop at building responsible transportation. We're also doing the little things, like printing this brochure on FSC-certified (Forest Stewardship Council) paper, which includes a minimum of 30% post-consumer recovered fiber. Additionally, electricity used in the manufacturing process is generated from renewable resources. Please help us out and recycle this brochure when you're done.






An instant classic

The 2009 Saturn SKY® Roadster

SKY Red Line in Black Onyx



Rethink adrenaline. The SKY. The wildly exciting roadster. It's high performance and high style without the high price. With an available 260-hp engine, a near 50/50 weight distribution, and a suspension that successfully balances handling and comfort, this head-turner is ready for anyone who wants to have fun and let the sun shine in.

SATURN

**100,000 MILE
5-YEAR POWERTRAIN
WARRANTY**

Powertrain Warranty

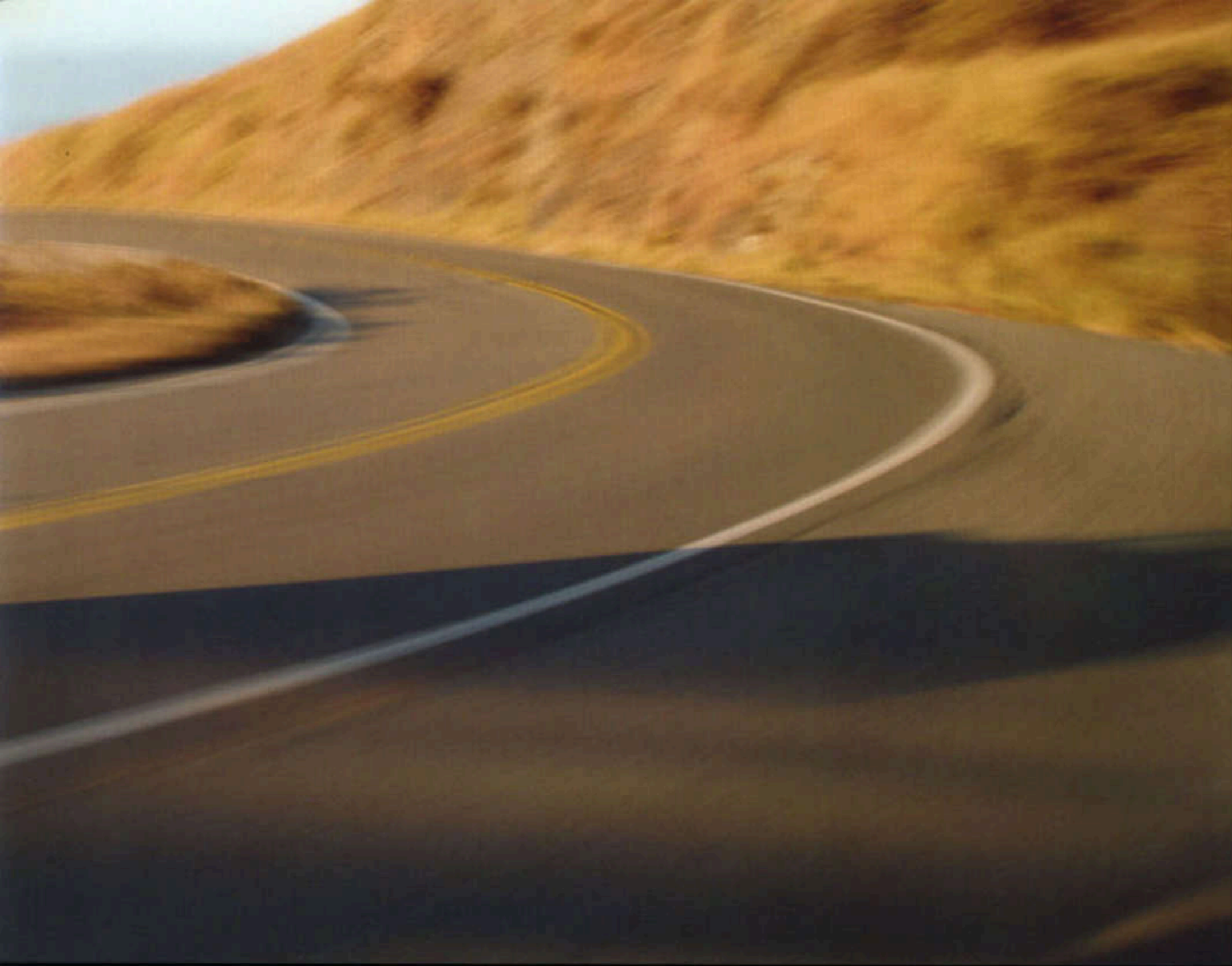
Every 2009 Saturn gets the best coverage in America: the Saturn 100,000-mile/5-year¹ Transferable Powertrain Limited Warranty, plus Roadside Assistance and Courtesy Transportation.

¹ Whichever comes first. See retailer for details.



SKY Red Line in Black Onyx with accessory rear spoiler

Rethink merry-go-round. **0.90g** maximum lateral acceleration.



Tested street credentials

We designed the SKY with everything it takes to be the definitive roadster: high-performance Goodyear® tires, pedals set for heel/toe shifting, StabiliTrak®, Traction Control, and four-wheel disc brakes with ABS.

Joystick

Our short-throw five-speed manual transmission controls the standard 173-hp, 2.4-liter, 16-valve engine and the available 260-hp turbocharged Red Line engine. Both are complemented by Variable Valve Timing and have great off-the-line torque via a limited slip differential.

Continuous contact

The SKY has a four-wheel, independent short/long arm suspension with Bilstein™ coil-over monotube shocks. This system optimizes ride quality, handling, and cornering, all while isolating road noise.



260 horsepower
0 to 60 mph in 5.5 seconds

SKY Red Line in Evening Blue

SKY Red Line

Power: **260** hp @ 5,300 RPM

Torque: **260** lb-ft @ 2,500 RPM

Turbocharged **2.0-liter** engine

60 to 0 mph in **126** feet

Redline at **6,300** RPM

EPA-est. mpg **19** city/**28** hwy



Rethink power. The SKY Red Line rethinks power by offering a turbocharged engine with Variable Valve Timing and direct injection technology, which help the engine produce more power while maintaining low fuel consumption. This high-performance engine offers a broad, flat torque curve for impressive acceleration throughout a wide rpm range, and dual-scroll technology to help eliminate turbo lag. And with a performance-tuned suspension, premium interior amenities, and 18-inch polished alloy wheels with Goodyear® Eagle® F1 W-rated high-performance tires, it's the serious roadster for people who love to look good and move with speed and control.



SKY Red Line in Ruby Red

EPA-estimated **19** mpg city, **28** mpg highway



Exercise balance

We've equipped the SKY with StabiliTrak®-Stability Control—a system that uses the vehicle's electronic brake and traction control capabilities to provide added stability—ABS for more precise, controlled braking performance, and Traction Control for enhanced traction.

Play it safe

We outfitted the SKY so you can feel safe with dual-stage driver and front passenger air bags¹ with a Passenger Sensing System. It's also equipped with an energy-absorbing steering column and instrument panel, front and rear crumple zones, and side-impact door beams.

¹ Always use safety belts and the correct child restraint for your child's age and size. Even in vehicles equipped with air bags and the Passenger Sensing System, children are safer when properly secured in a rear seat in the appropriate infant, child or booster seat. See owner's manual for more information.



Sound effects

The SKY has a stainless-steel high-flow exhaust system with a polished aluminum tip tuned to provide optimal performance.

Power with poise

We feature Goodyear® Eagle RS-A® all-season 18-inch tires on the SKY. They fill the fenders, offer excellent road-gripping ability, and help achieve a 60-to-0 mph stopping distance of 126 feet.



SKY in Silver Pearl

Rigid response

The SKY uses a hydroformed tube structure to help create an extremely strong and rigid chassis, especially for a convertible. The purpose-built chassis has the stiffness and torsional rigidity necessary to make it a nimble, fun-to-drive roadster for the driving enthusiast.



SKY with available Premium Trim Package



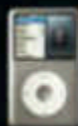
OnStar® Every 2009 Saturn includes a one-year subscription to the OnStar Safe & Sound Plan! Beyond our standard safety and security features, you get monthly vehicle diagnostic reports via e-mail, as well as Roadside Assistance. OnStar can even flash your lights and sound your horn if you can't find your vehicle. You can easily connect with an Advisor who can unlock your door or help authorities locate your vehicle if it is stolen.² With the available Directions & Connections Plan, you get OnStar Turn-by-Turn Navigation,³ which is the simplest and smartest navigation system. Simply push the blue OnStar button and tell the Advisor where you want to go to receive automated voice-guided directions.





Rethink cockpit

Our designers made sure the interior of the SKY looks sharp and feels good, with big, bold, motorcycle-inspired instrumentation, piano-black accents, and bolstered sport seats that help you feel secure and comfortable.



225-watt audio system

The available Monsoon® audio system, with XM Radio¹, is specifically tuned to the acoustic environment of the SKY. An available USB port allows you to connect and control select iPod® devices⁵ through the radio controls and even show playlists on the SKY's audio system display.



Bluetooth wireless technology

Our comprehensive, convenient, and easy-to-use in-vehicle technology allows you to connect select Bluetooth® compatible cell phones to the SKY for hands-free calling.

¹ Call 1-888-4ONSTAR (1-888-466-7827), visit onstar.com, and see inside back cover for details and system limitations. ² Remote Door Unlock and Stolen Vehicle Location Assistance success may vary with conditions. ³ Not available in certain areas. Visit onstar.com for coverage map. ⁴ Available in the 48 contiguous United States. Required \$12.95 monthly subscription sold separately after three trial months. All fees and programming subject to change. Subscription subject to customer agreement. For more information, visit gm.xmradio.com. ⁵ USB port late availability. Not all iPod devices are compatible. Please ask your retailer for a list of compatible players. iPod is a trademark of Apple Inc., registered in the U.S. and other countries. ⁶ The Bluetooth trademark is owned by Bluetooth SIG, Inc., and any use of such marks by General Motors is under license. Go to www.gm.com/bluetooth to find out which Bluetooth phones are compatible with the vehicle.



SKY in Silver Pearl

Accessories



Windscreen



Sport Pedal Package



Rear Spoiler



18" Alloy Wheels



Console Saddle Bag



Cat-Back Exhaust

- Molded splash guards – front & rear
- Tonneau cover
- Premium all-weather floor mats
- Air intake
- Portable music player connector cable
- Highway emergency kit
- Locking gas cap

- Trunk storage bag
- Wheel locks
- Smoker's Package
- Car cover
- Stainless steel license plate frame
- Stone Impingement Package
- Personal Audio Link

Rethink accessorize

The great assortment of Saturn Accessories allows you the ability to truly customize your SKY. Functional features like suspension kits and cold-air intakes are all about performance, while floor mats and spoilers add your own personal touch. With so many accessories specifically designed to fit the SKY, you'll have no problem finding the right ones to make it yours.



SKY

SKY KEY STANDARD FEATURES

- 173-hp, 2.4-liter, 16-valve, inline 4-cylinder engine with Variable Valve Timing (VVT)
- Five-speed manual transmission with short-throw shifter
- Stainless-steel high-flow exhaust system with polished aluminum tip
- Four-wheel anti-lock disc brakes
- Four-wheel independent short/long arm suspension with Bilstein™ coilover monotube shocks and front and rear stabilizer bars
- 18-inch alloy wheels
- Goodyear® Eagle RS-A® P245/45R18 V-rated performance all-season tires
- Limited slip differential
- Deep, bolstered, black cloth sport seats
- Power windows, exterior mirrors, and door locks
- Electronically controlled air conditioning
- Remote Keyless Entry
- Leather-wrapped steering wheel

- CD/MP3 player with AM/FM stereo, MP3 playback, 6 speakers, auxiliary iPod™ input jack and Radio Data System (RDS), speed-compensated volume and TheftLock
- XMRadio² with three-month trial service
- OnStar® with one year Safe & Sound Plan³
- Dual-stage front air bags⁴ with Passenger Sensing System
- StabiliTrak®-Stability Control
- Automatic projector-beam halogen headlamps and daytime running lamps
- Projector-beam halogen foglamps
- Tire Pressure Monitor



SKY RED LINE

ADDITIONAL SKY RED LINE STANDARD FEATURES

- 260-hp, 2.0-liter, 16-valve, turbocharged, intercooled, direct injection inline 4-cylinder engine with VVT
- Performance-tuned suspension including large stabilizer bars, stiff springs, and unique shock tuning
- 18-inch polished alloy wheels
- Goodyear® Eagle® F1 GS-2 P245/45R18 W-rated performance tires
- Front brake cooling vents
- Digital turbo-boost gauge and Red Line gauge cluster graphics
- Unique lower front grille and foglamp trim
- Stainless-steel high-flow exhaust system with dual polished aluminum tips
- Stainless-steel pedal covers and metallic sill covers
- Floor mats with Red Line embroidery
- Blackout headlamp bezels
- Hands-free phone system for select Bluetooth™ compatible phones

¹ iPod is a trademark of Apple Inc., registered in the U.S. and other countries. Not all iPod devices are compatible. Please ask your retailer for a list of compatible players. ² Available in the 48 contiguous United States. Required \$12.95 monthly subscription sold separately after three trial months. All fees and programming subject to change. Subscription subject to customer agreement. For more information, visit gm.xmradio.com. ³ Call 1-888-4ONSTAR (1-888-466-7827), visit onstar.com, or see inside panel on the right for details and system limitations. ⁴ See panel on the right for important information about air bags, including a note about child safety. ⁵ The Bluetooth trademark is owned by Bluetooth SIG, Inc., and any use of such marks by General Motors is under license. Go to www.gm.com/bluetooth to find out which Bluetooth phones are compatible with the vehicle.

Exterior Colors



Polar White



Forest Green



Black Onyx



Chili Pepper Red



Evening Blue



Silver Pearl



Sunburst Yellow
(extra-cost option)



Techno Gray



Ruby Red

Interior Colors



Black Leather



Red Leather



Tan Leather



Tan



Black



Black Cloth

Cloth Top

Color Combinations

EXTERIOR PAINT

INTERIOR CLOTH/MATCHING TOP

AVAILABLE LEATHER/MATCHING TOP

Polar White	-	Black/Black, Red/Black, Tan/Tan
Forest Green	-	Black/Black, Tan/Tan
Black Onyx	Black/Black	Black/Black, Red/Black, Tan/Black, Tan/Tan
Chili Pepper Red	Black/Black	Black/Black, Tan/Tan
Evening Blue	-	Black/Black, Tan/Tan
Silver Pearl	Black/Black	Black/Black, Red/Black
Sunburst Yellow (extra-cost option)	-	Black/Black
Techno Gray	Black/Black	Black/Black, Red/Black,
Ruby Red	-	Black/Black, Tan/Tan, Red/Black

Wheels



18" PAINTED ALLOY



18" POLISHED ALLOY
(Red Line)



18" CHROME ALLOY
(Optional)

Specifications/Features

POWERTRAIN

	SKY	SKY RED LINE
Engine	2.4-liter, 16-valve, inline-4, VVT intake/exhaust, cast aluminum block and cylinder head	2.0-liter, 16-valve, turbocharged, intercooled, direct injection inline-4, VVT intake/exhaust, cast aluminum block and cylinder head
Horsepower (hp/kW @ rpm)	173/129 @ 5,800 rpm	260/194 @ 5,300 rpm
Torque (lb.-ft./Nm @ rpm)	167/226 @ 4,500 rpm	260/351 @ 2,500-5,200 rpm
Bore and stroke/compression ratio	88 x 98 mm/10.4:1	86 x 86 mm/9.2:1
Transmission	5-speed manual with short-throw shifter Available electronically controlled 5-speed automatic	5-speed manual with short-throw shifter Available electronically controlled 5-speed automatic
Differential	Limited slip	Limited slip

PERFORMANCE

0-to-60 mph	7.2 seconds	5.5 seconds
Quarter mile	15.7 seconds	13.9 seconds
Lateral acceleration	0.90g	0.90g
60-to-0 mph braking distance	126 ft.	126 ft.

CHASSIS AND BODY

Drivetrain	Front-engine/rear-wheel drive, near 50/50 weight distribution	
Body construction	Lower-dominant, integral hydroformed tube and stamped steel body structure, with hydroformed steel clamshell hood, inner doors and rear quarter panels	
Suspension	Four-wheel independent short/long arm suspension with Bilstein™ coilover monotube shocks and front and rear lightweight hollow stabilizer bars with ball-joint links	
Steering	Hydraulic-assisted, power rack and pinion with 16.4:1 overall ratio	
Brakes	4-wheel, power-assisted disc brakes with ABS and dynamic rear proportioning (vented front: 11.7 in.; rear: 10.9 in.)	
Wheels	18-inch flangeless painted alloy wheels	18-inch flangeless polished alloy wheels
Tires	Goodyear® Eagle RS-A® P245/45R18 V-rated performance all-season tires	Goodyear® Eagle® F1 GS-2 P245/45R18 W-rated performance tires
Exhaust	Stainless-steel high-flow exhaust system with polished aluminum tip	Stainless steel high-flow exhaust system with dual polished aluminum tips

EXTERIOR AND INTERIOR DIMENSIONS

Wheelbase	95.1 in.	Headroom	38.4 in.
Overall length	161.1 in.	Legroom	42.7 in.
Width	71.4 in.	Hip room	50.6 in.
Height	50.1 in.	Shoulder room	52.7 in.
Track (front/rear)	60.7 in./61.4 in.	Passenger volume	50 cu. ft.

WEIGHTS AND CAPACITIES

Curb weight (lbs.) manual/automatic	2,965/2,967	3,036/3,038
Cargo-area volume (cu. ft.) top up/stored	5.4/2.0	5.4/2.0
Fuel/capacity (approx. gal.)	Unleaded 87 octane (premium recommended)/13	Unleaded 87 octane (premium recommended)/13

EPA-ESTIMATED MPG (CITY/HWY)

Manual transmission	19/25	19/28
Automatic transmission	19/24	19/26

IMPORTANT WORDS ABOUT THIS CATALOG

We have tried to make this catalog comprehensive and factual. We reserve the right, however, to make changes at any time, without notice, in prices, colors, materials, equipment, specifications, models and availability. Specifications, dimensions, measurements, ratings, and other numbers in this catalog and other printed materials provided at the retailer or affixed to vehicles are approximates based upon design and engineering drawings and prototypes and laboratory tests. Your vehicle may differ due to variations in manufacturer and equipment. Certain vehicle features may lose their usefulness over time due to obsolescence from technical changes. Because some information may have been updated since the time of printing, please check with your Saturn retailer for complete details. Saturn reserves the right to lengthen or shorten the model year for any product for any reason, or to start and end model years at different times.

A NOTE ABOUT AIR BAGS AND CHILD SAFETY

Always use safety belts and the correct child restraint for your child's age and size. Even in vehicles equipped with air bags and the Passenger Sensing System, children are safer when properly secured in a rear seat in an appropriate infant, child or booster seat. Never place a rear-facing infant restraint in the front seat of any vehicle equipped with an active frontal air bag. Air bag inflation can cause severe injury or death to anyone too close to the bag when it deploys. Be sure every occupant is properly restrained. See your vehicle owner's manual and child-safety seat instructions for more information.

ONSTAR® INFORMATION

OnStar services require vehicle electrical system (including battery), wireless service and GPS satellite signals to be available and operating for features to function properly. OnStar acts as a link to existing emergency service providers. Subscription Service Agreement required. Call 1-888-4ONSTAR (1-888-466-7827) or visit onstar.com for OnStar's Terms and Conditions, Privacy Policy, details and system limitations.

SATURN'S VEHICLE EXCHANGE PROGRAM

Within the first 30 days or 1,500 miles of delivery, whichever comes first, the original purchaser may exchange his or her Saturn vehicle if not completely satisfied. In the event that an owner returns his or her vehicle, he or she will exchange it for another new 2008 or 2009 Saturn vehicle. See retailer for limitations and restrictions. The vehicle must be returned in the condition in which it was delivered, without damage or excessive wear and tear. If non-warranty repairs equal to or greater than \$300 have been performed or are necessary, the vehicle is not eligible to be returned; if less than \$300, the damage must be repaired or the estimate deducted from the credit toward the exchange vehicle.

NEW VEHICLE LIMITED WARRANTY

This warranty is for Saturn vehicles registered in the United States. See your Saturn retailer for terms and conditions. Covered by the best coverage in America: the Saturn 100,000-mile/5-year (whichever comes first) Transferable Powertrain Limited Warranty, plus Roadside Assistance and Courtesy Transportation. Covered for 3 years/36,000 miles (whichever comes first): the complete vehicle, tires, towing to your nearest Saturn retailer, cosmetic corrosion resulting from defects, repairs made to correct any vehicle defect, with no charge for most warranty repairs. See retailer for details.

INTERIOR AND EXTERIOR

	SKY	SKY RED LINE
Power windows with driver express-down, power exterior mirrors and power programmable door locks	●	●
Air conditioning with electronic control	●	●
Remote Keyless Entry with extended range, alarm-activation, panic mode, remote trunk release	●	●
Analog speedometer, tachometer and fuel gauge	●	●
Driver Information Center: low-fuel indicator, oil change reminder, outside temperature gauge	●	●
Digital turbo-boost gauge and Red Line gauge cluster graphics	-	●
Sound-insulated cloth convertible top with defroster-equipped rear glass window	●	●
Leather-wrapped steering wheel, cruise control and Driver Information Center controls	●	●
Steering wheel audio controls	○ ¹	●
CD/MP3 player with AM/FM stereo, six speakers, auxiliary iPod [™] input jack, Radio Data System (RDS), speed-compensated volume and TheftLock	●	●
CD/MP3 player with AM/FM stereo, six speakers, auxiliary iPod [™] input and USB port, ² auto tune, Radio Data System (RDS), speed-compensated volume, TheftLock and Monsoon [®] premium audio system	○	○
Monsoon [®] premium 225-watt 7-speaker audio system including subwoofer	○	○
6-disc, in-dash CD changer and MP3 playback, speed-compensated volume ⁴	○	○
Hands-free phone system for select Bluetooth [®] compatible phones	○ ⁵	●
XMRadio [®] with three-month trial service	●	●
Cloth front bucket seats, reclining with manual seat adjusters, integrated head restraints and 2-way power height adjuster	●	●
Premium Trim Package: leather seat inserts, steering wheel audio controls, metallic-finish sill plates, stainless steel pedal covers, Bluetooth connectivity with select phones, ⁶ and leather-wrapped shift knob ⁷	○	-
Leather seat inserts	○ ⁸	●
Metallic-finish sill plates	○ ⁸	●
Stainless steel pedal covers	○ ⁸	●
Leather-wrapped shift knob ⁷	○ ⁸	●
Floor mats	●	●
Blackout headlamp bezels	-	●
Front brake cooling vents	-	●
Unique lower front grille and foglamp trim	-	●

SAFETY AND SECURITY

OnStar [®] with one year Safe & Sound Plan ³	●	●
Dual-stage front air bags ⁴ with Passenger Sensing System	●	●
4-wheel, power-assisted disc brakes with ABS and dynamic rear proportioning	●	●
StabiliTrak [®] -Stability Control with Traction Control and selectable competitive mode	●	●
Three-point safety belts with pretensioners and load-limiting retractors	●	●
Security system and engine immobilizing theft-deterrent feature	●	●
Automatic projector-beam halogen headlamps and daytime running lamps	●	●
Projector-beam halogen foglamps	●	●
Tire Pressure Monitor	●	●
Tire inflator kit: inflator and tire sealant	●	●
Lockable glove box	●	●

● = standard ○ = available - = not available

AN IMPORTANT NOTE ABOUT ALTERATIONS AND WARRANTIES

Installations or alterations to the original equipment vehicle (or chassis) as distributed by GM are not covered by the Saturn New Vehicle Limited Warranty. The special body company, assembler, equipment installer or upfitter is solely responsible for warranties on the body or equipment and any alterations (or any effect of the alterations) to any of the parts, components, systems or assemblies installed by GM. GM is not responsible for the safety or quality of design features, materials or workmanship of any alterations by such suppliers.

ASSEMBLY

Saturn vehicles and their components are assembled or produced by different operating units of GM, its subsidiaries or suppliers to GM worldwide. We sometimes find it necessary to produce Saturn vehicles with different or differently sourced components than originally scheduled. Because some options may be unavailable when your vehicle is assembled, we suggest you verify that your vehicle includes the equipment you ordered, or if there are changes, that they are acceptable to you.

ENGINES

Saturn products are equipped with engines produced by GM Powertrain or other suppliers to GM worldwide. The engines in Saturn products may also be used in other GM makes and models.

SPARE TIRE INFORMATION

There is no jack or spare tire (and no place to store a tire) in the 2009 Saturn SKY. Your vehicle has a tire sealant and compressor kit that uses a liquid tire sealant to temporarily seal up to a 1/4-inch puncture in the tread area of the tire. After using the tire inflator kit, it is recommended that you take the tire to an authorized retailer for inspection and repair as soon as possible, but at least within 100 miles of driving. The tire sealant cannot seal and inflate sidewall damage, punctures larger than 1/4 inch, or a tire that has unseated from the wheel. The sealant can only be used on one tire and for one time before its expiration date.

GM CARD

What you spend each day can help toward the purchase or lease of a new Saturn. With three different reward cards to choose from and over 50 eligible new GM vehicles, there are plenty of reasons to get excited about what your reward could be. Apply for a GM Reward MasterCard and start saving for your new ride today. Visit gmcardsmemberservices.com for more details.

©2008 Saturn Corporation. Saturn and its logo are registered trademarks of Saturn Corporation. SKY is a registered trademark of Saturn Corporation.

¹ iPod is a trademark of Apple Inc., registered in the U.S. and other countries. Not all iPod devices are compatible. Please ask your retailer for a list of compatible players. ² Available in the 48 contiguous United States. Required \$12.95 monthly subscription sold separately after three trial months. All fees and programming subject to change. Subscription subject to customer agreement. For more information, visit gm.xradiocom. ³ Call 1-888-4ONSTAR (1-888-466-7827), visit onstar.com, or see inside panel on the left for details and system limitations. ⁴ See panel on the left for important information about air bags, including a note about child safety. ⁵ The Bluetooth trademark is owned by Bluetooth SIG, Inc., and any use of such marks by General Motors is under license. Go to www.gm.com/bluetooth to find out which Bluetooth phones are compatible with the vehicle. ⁶ Included in available Premium Trim Package. ⁷ USB port, late availability. ⁸ Requires available Monsoon[®] premium audio system. ⁹ Requires available manual transmission.

SKY



ASTRA 3-Door



AURA



VUE



VUE Red Line



OUTLOOK



SKY Red Line



ASTRA 5-Door



AURA Hybrid



VUE Hybrid



VUE 2-Mode Hybrid



Rethink green. The AURA Hybrid, VUE Hybrid and VUE 2-Mode Hybrid. (limited availability)

See all our vehicles at saturn.com

Rethink.



SATURN