

>> The smart
fortwo



More of what moves you.



European models shown throughout.

>> FOR more
fun
per ride.



The smart fortwo has grown in every respect – not just in width. Thanks to its trendsetting design, clever solutions, innovative assistance systems, unparalleled turning circle and an amazing amount of free space, the smart fortwo has so much more of what you're looking for. In short: alongside the old strengths, there are now a whole host of new ones. And that makes driving even more enjoyable.

>> FOR more
love
per detail.



Typically smart and unmistakable: the smart fortwo combines characteristic design features, such as the two-color concept consisting of the tridion safety cell and body panels, with unusual ideas and details. The result is a vehicle that clearly stands out on the road.



The body panels, which are plastic and feature a two-color look, are lightweight and durable, easily withstanding minor bumps and leaving the panels virtually unscathed.

Extremely short overhangs: the wheels are positioned on the outer ends of the vehicle – a highly unusual design feature in this form. And, in combination with the rear-engine concept, this is an intelligent, good-looking way to create a greater feeling of spaciousness.



To give the front a more striking look and feel, the smart fortwo features an eye-catching light design and honeycomb pattern on the front grille. As an option, add the Lighting package for LED daytime running lights.



The taillights are integrated into the rear end of the tridion safety cell. As an option, the sophisticated design can be made even more elegant with taillights using LED technology.



The optional panoramic roof – made of durable polycarbonate – not only looks good, but creates an even greater feeling of spaciousness.

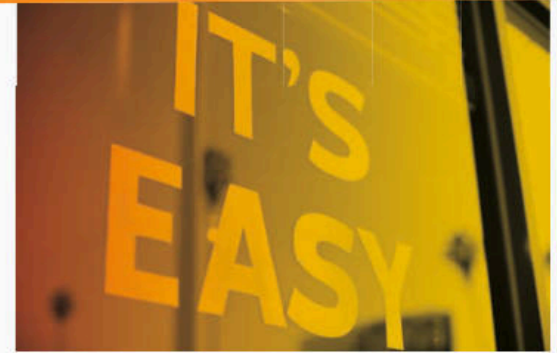


>> FOR more fun per function.

The smart fortwo shows true greatness, with its wide-opening doors and an amazingly spacious interior. From surprising stowage space solutions to details such as the design of the air vents, every detail combines functionality with emotional appeal.



The mix of materials and colors in the interior underlines the unique character of the smart fortwo – and gives every vehicle its own special touch.



The drawer in the center console is a clever idea: it creates space where there was none before to stow small items securely and out of sight.



The instrument cluster with a color 3.5" TFT display has all the data and information you need during your journey.

>> FOR more punch per inch.

With unique features such as a rear-mounted engine and rear-wheel drive, the smart fortwo features an even sportier style.

Engine and transmission: To make the extremely compact design possible, the engine and transmission are housed at the rear of the smart fortwo. With everything from an efficient 3-cylinder, 89-hp turbocharged engine and 100 lb-ft of torque to a new manual 5-speed transmission, it offers plenty of driving fun.

For extra comfort, you can also opt for the twinamic automatic 6-speed dual-clutch transmission that shifts gears effortlessly. Even if you change gears automatically or use the optional shift paddles as part of the Sport package, gear shifts take just a few hundredths of a second.



>> FOR more options per shift.



The various shifting options offered by twinamic let you decide how you wish to move. From efficient and comfortable to dynamic and sporty, you choose your preferred driving style.

In automatic mode, you can choose between the "Eco" or "Standard" gearshift. In both modes, gear shifting takes place automatically and without any loss of tractive power.

The "Eco" automatic gearshift shifts to the next gear at lower revs, for comfortable and fuel-efficient mobility.

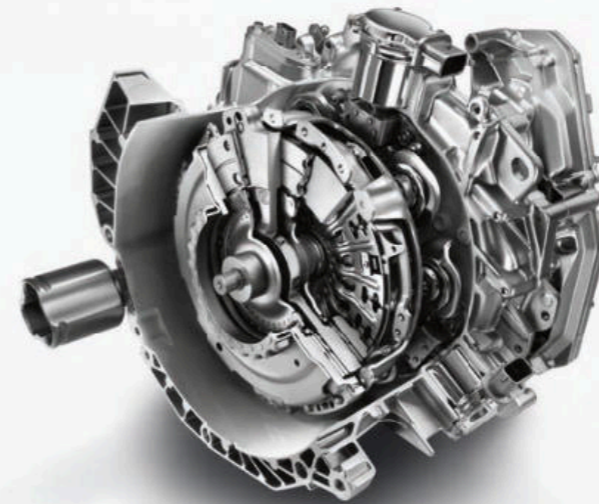
In the "Standard" automatic gearshift, gear shifting is performed at higher revs. This is for when you want a sportier driving style and more dynamic acceleration.

In manual mode, you change gears with the shift lever and determine the shift points yourself.



With the shift paddles on the multifunction sport steering wheel,¹ you have smooth gear changing available at your fingertips. This works in both manual and automatic modes.

The twinamic 6-speed dual-clutch transmission consists of two clutches—one to operate the uneven gears, and another to operate the even and reverse gears. Though both are active while the car is in motion, only one gear is engaged at any one time. When a gear is engaged, the next higher or next lower gear is in "standby" mode. Gear shifting is then performed by switching to the other clutch, which controls the next gear. This happens at lightning speed and without any loss of tractive power. It's a more efficient way to shift gears, whether you're in manual or automatic mode.



¹Available only with Sport package or Edition #1 package.

The tiniest turning circle: with a length of 8.8 feet and a Direct-Steer system with variable ratios, the smart fortwo has a turning circle of 22.8¹ feet that is nearly unrivaled. So when there's a free parking space on the other side of the road, a simple u-turn is all it takes. And thanks to the high seating position and greater visibility, you're likely to see plenty of free parking spaces.

¹Measured from curb to curb.

>> FOR more
agility
per road.

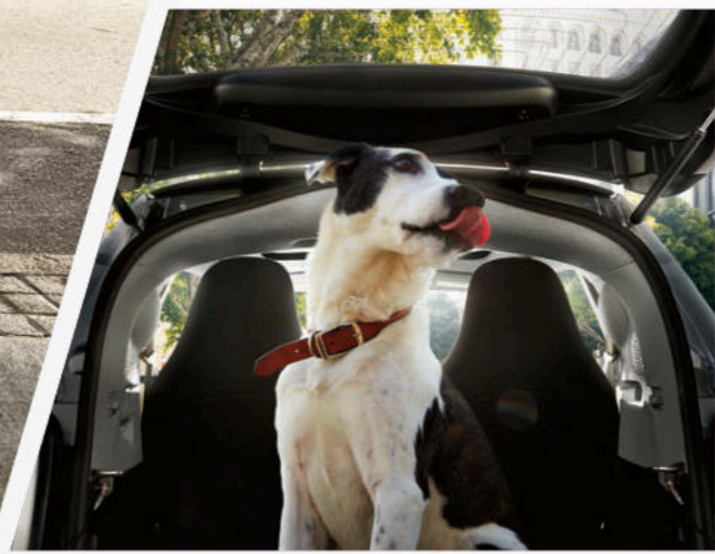




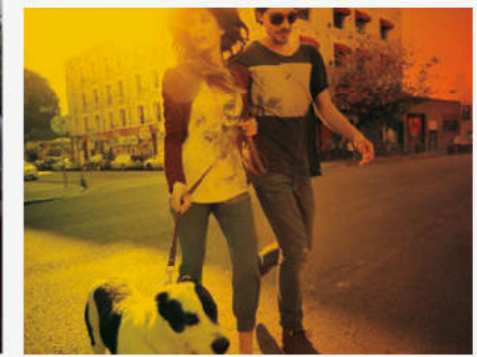
The split tailgate facilitates loading and unloading. Simply open the top section to stow smaller items inside the car. To load larger items conveniently, simply fold down the lower section.



The passenger seat backrest can be folded forward by 90 degrees to expand your options: items up to five feet in length fit easily in the smart fortwo.



With cargo volume of up to 9.2 cubic feet, the luggage compartment of the smart fortwo is surprisingly spacious. So what you take along with you is determined less by the available space and more by you yourself.



>> FOR more
space
per life.

>> FOR more entertainment per trip.

The innovative infotainment solutions from smart open up a whole range of possibilities. The free smart cross connect app connects your mobile phone with the smart Audio-System, turning it into a multimedia control center. And with eight high-performance loudspeakers, including removable subwoofers, the optional JBL sound system always delivers a full sound.



The smart Audio-System offers extensive functions for unlimited enjoyment. In addition to being able to play your favorite music using a USB stick or MP3 player, you can stream audio files using the Bluetooth® functionality in your smartphone – which also enables hands-free capabilities.



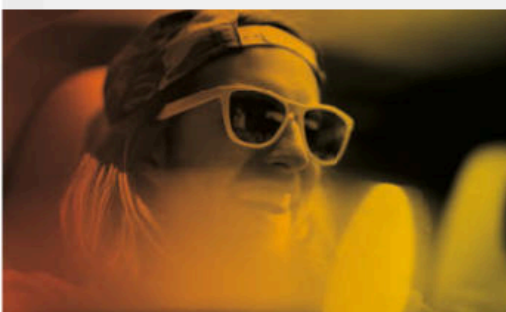
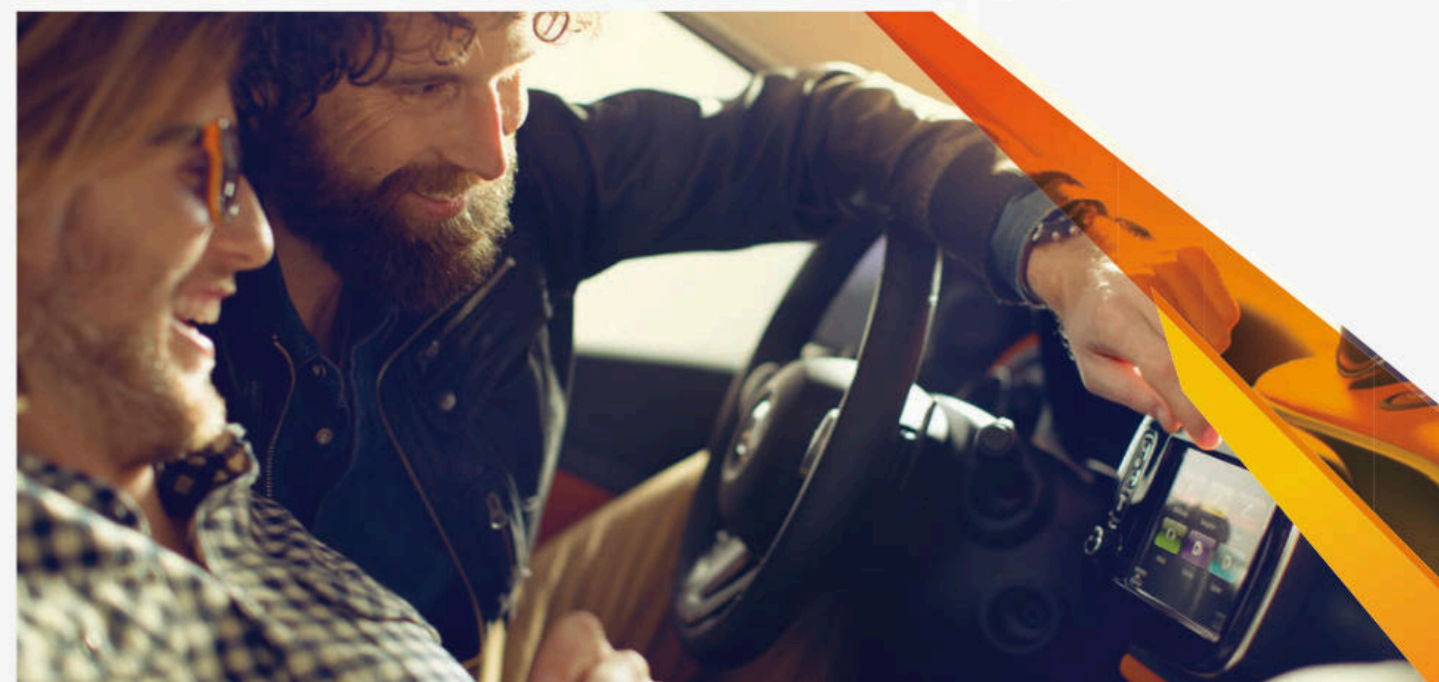
With the universal smartphone cradle,¹ you can connect your mobile phone² to your smart fortwo. Conveniently positioned and easy to operate, it's directly integrated into the Audio-System, turning your smartphone into a central control for music, infotainment, and navigation.

The free smart cross connect app is the interface between your smartphone and your smart fortwo. It enables you to access your vehicle data on the road and opens up a range of possibilities – such as analyzing your driving dynamics. It also offers other useful functions outside your vehicle, like showing you the distance you've traveled and your fuel consumption. And not only does the app remember where you've parked – it also knows how long you've been there.

¹Available as an option.
²For iOS and Android smartphones.



The JBL sound system includes a 6-channel DSP amplifier with a total power output of 240 watts – turning your smart fortwo into a small concert hall. Eight high-performance loudspeakers surround you with crystal-clear sound from all directions. The subwoofer in the luggage compartment, which is simple to remove without tools if required, delivers powerful bass that will send your pulse racing.



>> FOR more safety per feature.

The smart fortwo has a whole host of innovative assistance systems to prevent accidents from happening. And should something happen, the innovative tridion safety cell and eight airbags offer maximum protection.



The tridion safety cell

The core element of the innovative smart safety system is specifically designed to provide unsurpassed protection. Made of 75% high-strength steel, the tridion safety cell helps protect occupants from harm. Plus, other components, like crash boxes and deformation elements, can ensure maximum safety in a minimum amount of space.



Proximity Warning Function

The optional forward collision warning function can help prevent rear-end collisions. If the distance between your vehicle and a moving or stationary object becomes too short, a visual warning in the instrument cluster alerts you so you can react quickly. And if there's an additional risk of a collision, an acoustic warning will go off as well.



Crosswind Assist

Sudden gusts of wind can lead to tricky situations, especially if you are driving fast. Crosswind Assist, a standard feature, can detect deviations from straight-line stability and specifically brake individual wheels so that you do not have to countersteer as strongly.



Airbags

In addition to airbags for the driver and passenger, the smart fortwo also comes with knee bags, and head and thorax bags found in the driver- and passenger-seat backrests.



>> FOR more pure convenience.

Even the standard equipment in the smart fortwo is extraordinary. There are innovative safety functions like Crosswind Assist, ESP®, ABS, eight airbags, and cruise control, plus convenient features such as the Direct-Steer system, Hill-Start Assist, and an instrument cluster with a trip computer. Add to that intelligent stowage solutions like the passenger seat with a through-loading function, and you have a vehicle that is as advanced as it is unique.



European model shown. Exact interior not available in the U.S.

Interior

- > Dashboard and door center panels in black grained finish
- > Fabric upholstery in black
- > Steering wheel in 3-spoke design
- > Shift lever knob in black grained finish
- > Power windows
- > Instrument cluster with 3.5" color display
- > Automatic climate control
- > Radio
- > Sunglass box
- > Alarm

Exterior

- > Body panels in black or white
- > Tridion, grille and mirror caps in black
- > Solid roof in black
- > 15" steel wheels with hubcaps
- > H4 halogen headlights with integrated LED daytime running lights



prime

- > Upholstery in black leather with white topstitching
- > Tridion, grille and mirror caps in silver
- > Lighting package
- > Fog lights
- > Rain and light sensor
- > Ambient lighting
- > Heated and power mirrors
- > Heated seats
- > Height-adjustable driver seat
- > Retractable cargo cover
- > Center console with pull-out compartment and two cup holders
- > Panoramic roof with integrated sunblind
- > 3-spoke multifunction steering wheel in leather
- > 15" twin 5-spoke light-alloy wheels (R87) painted in black with a high-sheen finish



passion

- > Upholstery is available in three color variants: black/orange, black/white and black/black
- > Tridion, grille and mirror caps in black
- > Heated and power mirrors
- > Height-adjustable driver seat
- > Center console with pull-out compartment and two cup holders
- > Retractable cargo cover
- > 3-spoke multifunction steering wheel in leather
- > 15" 8-spoke light-alloy wheels (R86) painted in black with a high-sheen finish

proxy

- > Upholstery in blue/white fabric
- > Tridion, grille and mirror caps in white
- > JBL sound system
- > Sport package
- > Lighting package
- > Fog lights
- > Rain and light sensor
- > Ambient lighting
- > Heated and power mirrors
- > Heated seats
- > Height-adjustable driver seat
- > Retractable cargo cover
- > Center console with pull-out compartment and two cup holders
- > Panoramic roof with integrated sunblind
- > 3-spoke multifunction steering wheel in leather
- > 16" twin 5-spoke light-alloy wheels (R91) painted in black with a high-sheen finish



>> FOR expanding possibilities.

With optional equipment packages that focus on everything from sportiness and comfort to appearance and more, there's sure to be one that suits every taste. Better yet, these packages can be combined, so you can create the smart fortwo that works best for you.

Sport package.

Not just for a sporty look outside your gym – this package will turn heads and make a dynamic impression.

- > 16" 8-Y-spoke light-alloy wheels (R95)
- > Sport suspension that lowers the vehicle by 10 mm
- > Chrome exhaust tip
- > Brushed stainless steel sport pedals with rubber studs



Edition #1 package.

Is sporty elegance your style? Then the Edition #1 package is right up your street.

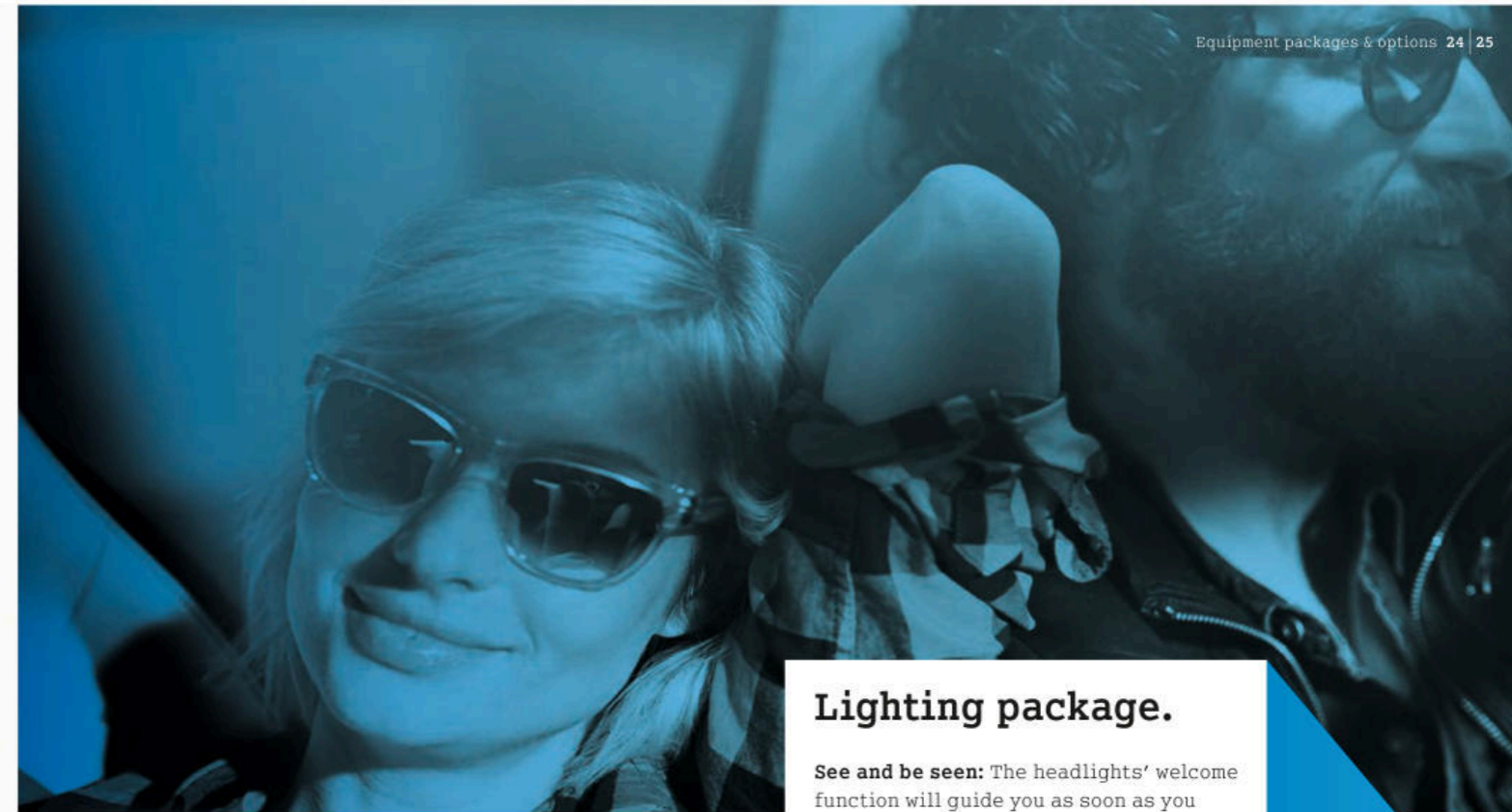
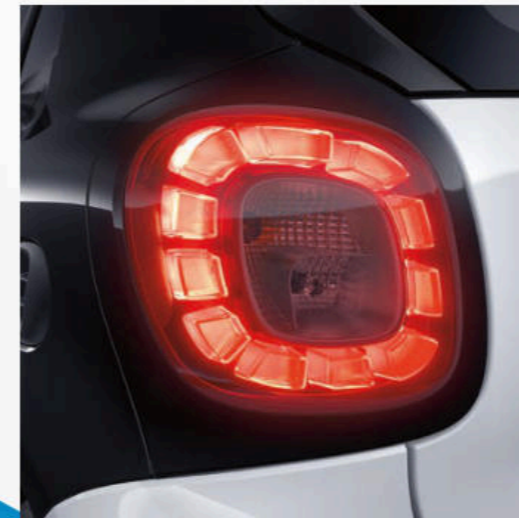
- > Body panels and grille in white
- > Tridion and mirror caps in orange
- > Upholstery in black/orange fabric
- > Sport package
- > Lighting package
- > Light and rain sensor
- > Fog lights
- > Panoramic roof
- > Edition #1 floor mats



Lighting package.

See and be seen: The headlights' welcome function will guide you as soon as you unlock your smart. The LED daytime running lights and taillights shine on throughout the day. And should it rain or get dark, the ever-vigilant rain and light sensor is on board.

- > H4 halogen headlights with integrated LED daytime running lights
- > LED taillights



>> FOR more personal charisma.

Alloy wheels for boundless individuality: the design and coloring add visual highlights, from sporty to elegant.

2



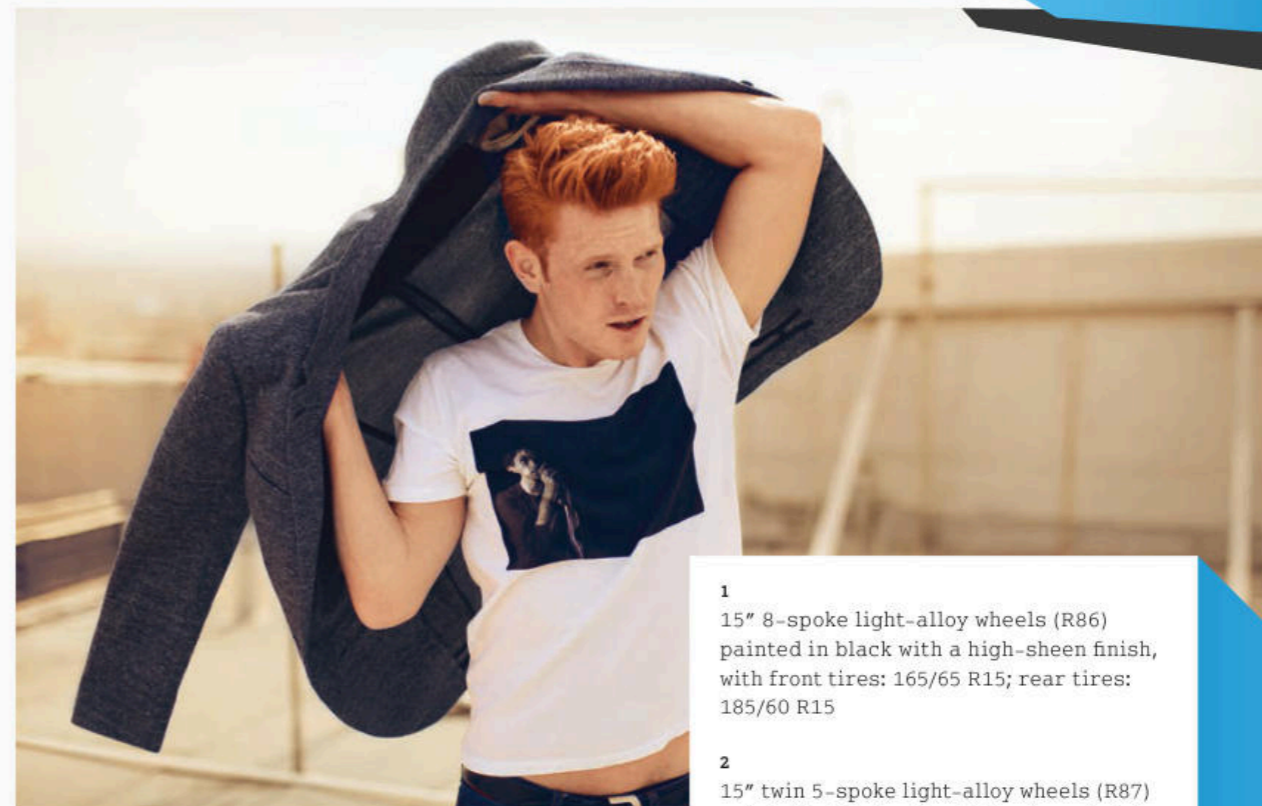
3



1



4



1

15" 8-spoke light-alloy wheels (R86) painted in black with a high-sheen finish, with front tires: 165/65 R15; rear tires: 185/60 R15

2

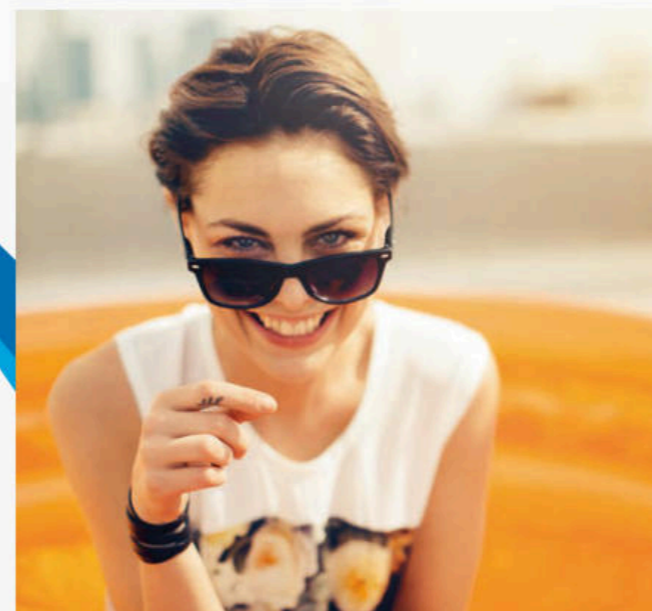
15" twin 5-spoke light-alloy wheels (R87) painted in black with a high-sheen finish, with front tires: 165/65 R15; rear tires: 185/60 R15

3

16" twin 5-spoke light-alloy wheels (R91) painted in black with a high-sheen finish, with front tires: 185/50 R16; rear tires: 205/45 R16

4

16" 8-Y-spoke alloy wheels (R95) painted in black, with front tires: 185/50 R16; rear tires: 205/45 R16



yellow (metallic)



titania grey (matte)



>> FOR more color on the roads.

moon white (matte)



midnight blue (metallic)



cool silver (metallic)



red



hazel brown (metallic)



lava orange (metallic)



white



black

The two-color concept typical of smart has always been an eye-catcher. And with the new colors for the body panels, tridion safety cell and radiator trim, it's now even more striking – giving you an even more individual look. You can also customize your smart fortwo with the exclusive range of available alloy wheels.

>> FOR more flexibility: Financial services.

With a smart, you always stay flexible – even when it comes to financing. Our leasing, financing and insurance products are designed to get you behind the wheel of your smart in no time at all, at attractive terms that can be tailored to your needs. Your smart dealer will be happy to advise you.

Leasing

When you lease a smart, you only pay for the use of the vehicle in low monthly installments. We will be pleased to inform you about our products that give you not only financial flexibility, but also full peace of mind with a wide range of insurance coverage.

Financing

Would you like to finance your smart with payments tailored to your needs? No problem. Talk to your smart dealer about the options that smart is able to offer you in cooperation with Mercedes-Benz Financial Services. These options continue right up until the moment you choose to keep your smart or exchange it for a new one.



>> Equipment and features.

Standard equipment

Exterior

- > Body panels in black or white
- > Tridion, grille and mirror caps in black
- > 15" steel wheels with hubcaps with front tires: 165/65 R15; rear tires: 185/60 R15
- > H4 halogen headlights with integrated LED daytime running lights
- > Solid roof in black
- > Lockable service hood
- > Twin-section tailgate

Interior

- > Dashboard and door center panels in black grained finish
- > Fabric upholstery in black
- > Multifunction steering wheel in 3-spoke design
- > Shift lever knob in black grained finish
- > Automatic climate control
- > Center console with double cup holder
- > Sunglass box
- > 90° front-folding passenger seat

Functions and electronics

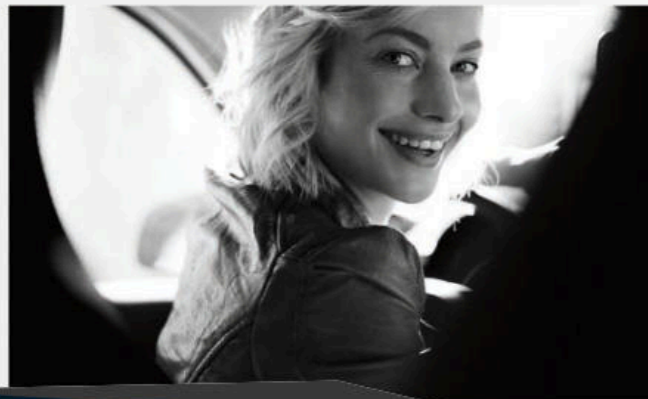
- > Instrument cluster with 3.5" color display
- > AM/FM Radio with 6 presets
- > CD player
- > USB/AUX inputs for external audio sources
- > Bluetooth® hands-free calling and audio streaming
- > Power windows
- > Windshield wipers with intermittent wiper control and automatic wipe/wash function
- > Rear windshield wiper with intermittent wiper control and automatic wipe/wash function
- > Manually adjustable door mirrors
- > smart Audio-System with USB/AUX interface, Bluetooth® interface with hands-free system, audio streaming for music transfer and to connect with the smart cross connect app (available separately for iOS and Android)
- > Automatic climate control

Technical features

- > Direct-Power Steering system with variable steering ratio
- > 5-speed manual transmission
- > Fuel tank (8 gallons)
- > 3-cylinder turbocharged gasoline engine

Safety and assistance systems

- > ESP® – electronic stability program
- > ABS – anti-lock braking system
- > Crosswind Assist
- > Hill-Start Assist
- > Cruise control
- > Tire pressure monitoring system
- > Eight airbags for driver and passenger
- > Side airbags for driver and passenger (head/thorax bag)
- > Knee bag for driver and passenger
- > Three-point seat belts with belt tensioners
- > Seat belt reminder warning for driver and passenger
- > Crash sensor for activation of hazard warning lights
- > Drive lock – automatic door locking when driving
- > Tridion safety cell
- > Alarm system



passion

Exterior

- > 15" 8-spoke light-alloy wheels (R86) painted in black with a high-sheen finish
- > Tridion, grille and mirror caps in black
- > Heated and power mirrors
- > Solid roof in black

Interior

- > 3-spoke multifunction steering wheel in leather
- > Upholstery is available in three color variants: black/orange, black/white and black/black
- > Center console with pull-out compartment and two cup holders
- > Retractable cargo cover
- > Height-adjustable driver seat

prime

Exterior

- > 15" twin 5-spoke light-alloy wheels painted in black with a high-sheen finish, with front tires: 165/65 R15; rear tires: 185/60 R15 (R87)
- > Tridion, grille and mirror caps in silver
- > Heated and power mirrors
- > Panoramic roof with integrated sunblind

Interior

- > 3-spoke multifunction steering wheel in leather
- > Upholstery in black leather with white topstitching
- > Center console with pull-out compartment and two cup holders
- > Retractable cargo cover
- > Height-adjustable driver seat
- > Heated seats for driver and passenger
- > Ambient lighting

Functions and electronics

- > Lighting package
- > Fog lights
- > Rain and light sensor

proxy

Exterior

- > 16" twin 5-spoke light-alloy wheels (R91) painted in black with a high-sheen finish
- > Tridion, grille and mirror caps in white
- > Heated and power mirrors
- > Panoramic roof with integrated sunblind
- > Chrome exhaust tip

Interior

- > 3-spoke multifunction steering wheel in leather
- > Upholstery in blue/white fabric
- > Center console with pull-out compartment and two cup holders
- > Retractable cargo cover
- > Height-adjustable driver seat
- > Heated seats for driver and passenger
- > Ambient lighting
- > Alloy pedals with rubber studs

Functions and electronics

- > JBL sound system
- > Lighting package
- > Fog lights
- > Rain and light sensor
- > Sport suspension
- > Sport paddles (if equipped with twinamic)

Equipment packages

Equipment packages available for the passion, prime and proxy equipment lines

Sport package

- > 16" 8-Y-spoke light-alloy wheels (R95)
- > Sport suspension that lowers the vehicle by 10 mm
- > Chrome exhaust tip
- > Brushed stainless steel sport pedals with rubber studs

Lighting package

- > H4 halogen headlights with integrated LED daytime running lights
- > LED taillights

Options

Exterior

- > Panoramic roof with integrated sunblind¹
- > Tridion safety cell in white, jupiter red, cool silver (metallic), lava orange (metallic) or graphite grey (matte)
- > Body panels in yellow (metallic), cool silver (metallic), hazel brown (metallic), lava orange (metallic), midnight blue (metallic), moon white (matte) or titania grey (matte)
- > Radiator trim in white, cool silver or black-to-yellow²
- > 15" 8-spoke alloy wheels painted in black with a high-sheen finish, with front tires: 165/65 R15; rear tires: 185/60 R15 (R86)
- > 15" twin 5-spoke alloy wheels painted in black with a high-sheen finish, with front tires: 165/65 R15; rear tires: 185/60 R15 (R87)
- > 15" 8-spoke alloy wheels, painted in silver, with front tires: 165/65 R15; rear tires: 185/60 R15 (R88)
- > 16" twin 5-spoke alloy wheels painted in black with a high-sheen finish, with front tires: 185/50 R16; rear tires: 205/45 R16 (R91)
- > 16" 8-Y-spoke alloy wheels painted in black, with front tires: 185/50 R16; rear tires: 205/45 R16 (R95)³
- > Winter tires⁴
- > Wheel trim for steel wheels
- > Sport package
- > Lighting package
- > Fog lights
- > Rain and light sensor

Interior

- > Ambient lighting²
- > Upholstery in black leather
- > Center armrest at front (folding) and double cup holder at front, cup holder at rear²
- > Retractable cargo cover
- > Retractable luggage compartment cover with net bag

Edition #1 package

- > Body panels and grille in white
- > Tridion and mirror caps in orange
- > Upholstery in black/orange fabric
- > Sport package
- > Lighting package
- > Light and rain sensor
- > Fog lights
- > Panoramic roof
- > Edition #1 floor mats

Functions and electronics

- > Height-adjustable driver seat
- > Heated seats for driver and passenger
- > Heated and power mirrors

Technical features

- > Twinamic 6-speed dual-clutch transmission

Safety and assistance systems

- > Proximity Warning Function with visual and acoustic warning
- > Anti-theft alarm system that monitors the doors and service cover (lockable)

Infotainment, navigation and communication

- > Digital radio
- > JBL sound system including a 6-channel DSP amplifier with total power output of 240 watts, with eight high-performance loudspeakers including a removable subwoofer in the luggage compartment²
- > Smartphone cradle

>> Technical data.

	89 hp with manual transmission with automatic start/stop system	89 hp with twinamic dual-clutch transmission
Engine/type	3-cylinder turbo engine	3-cylinder turbo engine
Engine displacement in cc	898	898
Max. power in hp at rpm	89/5,500	89/5,500
Max. torque	100 lb-ft	100 lb-ft
Bore x stroke in mm	72.2 x 73.1	72.2 x 73.1
Compression ratio	9.5 : 1	9.5 : 1
Fuel delivery	Gasoline	Gasoline
Max. speed in mph	96	96
Acceleration 0–60 mph in seconds	10.1	10.5
Engine position/drive	Rear-wheel drive	Rear-wheel drive
Transmission	Manual 5-speed transmission	6-speed dual-clutch transmission
Fuel consumption in mpg:	mpg	mpg
city	32	32
highway	39	39
combined	36	36
Fuel type	91 Octane	91 Octane
Brakes/dynamic handling control system	Internally ventilated disc brakes at front, drum brakes at rear/ESP®, ABS	Internally ventilated disc brakes at front, drum brakes at rear/ESP®, ABS
Wheels/tires (front; rear) standard, passion, prime	15" //165/65 R15; 15" //185/60 R15	15" //165/65 R15; 15" //185/60 R15
Wheels/tires (front; rear) proxy	16" //185/50 R16; 16" //205/45 R16	16" //185/50 R16; 16" //205/45 R16
Vehicle length/width/height in inches	106.1/65.47/61.22	106.1/65.47/61.22
Track width (front/rear) in inches	57.83/56.3	57.83/56.3
Wheelbase in inches	73.74	73.74
Turning circle in feet	22.8	22.8
Weight in lbs	1,984	2,053
Luggage compartment capacity in cubic feet	9.2 cubic feet	9.2 cubic feet
Fuel tank in gallons	8	8
Warranty in years¹	4-year/50,000 miles	4-year/50,000 miles

¹Including grab handle for passenger and glasses compartment for driver. ²Not available with standard pure model. ³In conjunction with Sport package or proxy equipment line.

⁴Not in conjunction with alloy wheels R91 and R95.

¹Warranty available for 4 years or up to 50,000 miles, whichever comes first.



1-800-smart-USA
www.smartusa.com

smart – a Daimler Brand