

GRAND VITARA

SUZUKI 07



THE OFFICIAL SUV OF "I'M OUTTA HERE"

You can't help it. You're hardwired for adventure and when you gotta go, you gotta go. That's why you need the 2007 Suzuki Grand Vitara. Don't let its good looks fool you, this is one serious SUV. With standard V6 power, true 4WD engineering and rock-solid construction, Grand Vitara is no poser. It's official. To live life according to your rules, follow these two: #1, get a new Suzuki Grand Vitara. #2, take off.





THE CIVILIZED WAY TO GET TO PLACES THAT AREN'T

Your cell phone has no bars. You're miles from a Wi-Fi hot spot. And the worldwide Web seems worlds away. But just because modern society is a distant memory doesn't mean you can't enjoy modern conveniences. Thanks to Grand Vitara, you'll feel right at home with its long list of refinements and cultured amenities. Sure, Grand Vitara's genuine off-road performance will have you screaming "Yee haa!" But its muscular exterior and sophisticated interior will leave you whispering "Sweet." In the Grand Vitara, you're never far from civilization. No matter where you are.

Grand Vitara X-Sport Package shown. Some features may not be available on some models. Please refer to Specifications pages for complete information.



Power Sunroof Let the sunshine in, or the moonbeams, with Grand Vitara's power tilt-and-slide sunroof. Easy to operate. Very easy to get used to. **Integrated Center Console** Grand Vitara's stylish center console is also highly functional, placing fingertip controls easily within reach. **SmartPass™ Keyless Entry and Start System** In your hand or in your pocket, it makes entry and exit easy by allowing you to lock and unlock your Grand Vitara—even start and stop the engine—without using a key. Just like those pricey luxury sedans. **Heated Front Seats** The touch of a button will keep you and your passenger comfortable and warm. Cool. Some features may not be available on some models. Please refer to Specifications pages for complete information.



A high-angle, black and white photograph of a car's interior. The view is from the passenger side looking towards the driver's seat. The seats are upholstered in black leather with a subtle grid pattern. The center console and gear shift area are visible, featuring wood-grain trim. The steering wheel and dashboard are partially visible on the right side. The windows show a gravel surface outside.

YOU CAN ROUGH IT ONCE YOU GET THERE

Before you go riding, surfing, climbing or paddling, you'll be doing a whole lot of driving. That's where the Grand Vitara comes in. Just look at this interior... refined, roomy, flexible and oh-so comfortable. Plus it's the ultimate in utility, with a full complement of seating configurations and all sorts of cool storage compartments. See? Even a tough SUV can have a soft side.



A DASH OF TECHNOLOGY

Not just the dash, mind you, but an entire cabin loaded with technology, luxury and style. For example, the Grand Vitara offers a CD player with four speakers and even an available 7-speaker stereo with a 6-disc changer, subwoofer and two tweeters for you audiophiles out there. And with steering-wheel audio controls, you can flip stations or pump up the volume without taking your hands off the wheel. You also get standard automatic climate control with a micron air-filtration system, plus a long list of other creature comforts. Funny. For being so rugged, Grand Vitara seems awfully refined.



Automatic Climate Control Automatically controls interior temperature set to your preference. Plus, the micron air-filtration system filters out outside pollutants, leaving the interior a better place to...ahhhhhh...breathe. **MP3 and WMA Capable** Grand Vitara's standard audio system is an AM/FM/CD, MP3/WMA* capable stereo with four speakers. And it's XM* Ready with purchase of tuner. Crank it. **HomeLink¹ Wireless Control System** This piece of technological wizardry can be programmed to control all kinds of electronic devices including garage doors, community gates and home lighting. **Illuminated Gauges** Electroluminescent analog gauges are easy to read and look really great. Safety. And style. What else would you expect from Grand Vitara? **Space and Flexibility** Rear seats flip forward to give you plenty of cargo options. Some features may not be available on some models. Please refer to Specifications pages for complete information.

¹HomeLink is a registered trademark of Johnson Controls, Inc.



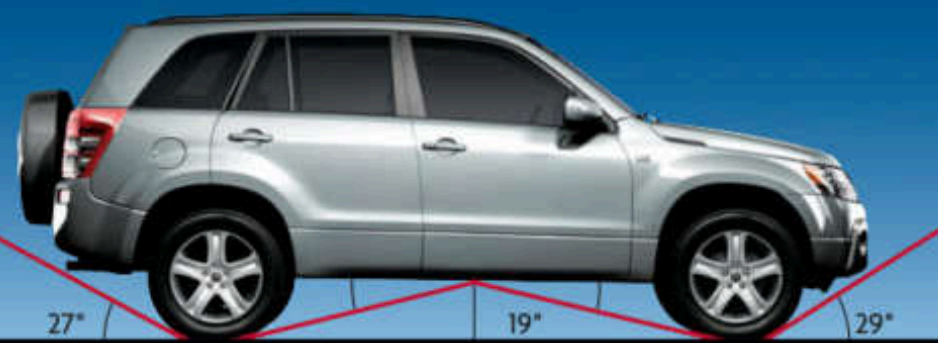
NO POWER SHORTAGE HERE

When you feel the need to climb, hike, bike or surf, you need an SUV with the guts to get you where you're going. Enter the Grand Vitara. See that brawny-looking powerplant? That's a 185-hp, 2.7-liter, V6, 24-valve DOHC with towing capability of up to 3,000 lb. Oh yeah, and it's standard, unlike other SUVs in the class. But the true test of any SUV is its off-road capability. And guess what? Grand Vitara aces the exam, courtesy of its available full-time, 4-Mode 4WD system. So put yourself in the power position, behind the wheel of the new Grand Vitara.

V6
2.7

SUZUKI

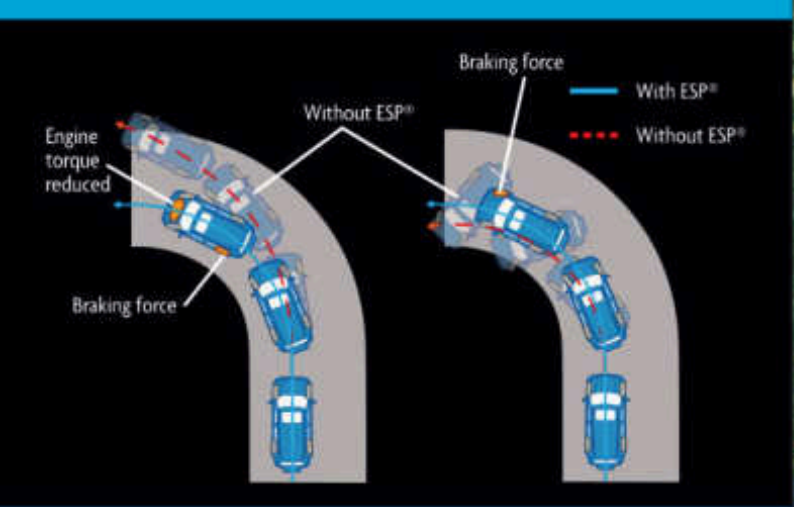
Grand Vitara X-Sport Package shown. Some features may not be available on some models. Please refer to Specifications pages for complete information.



*Tread Lightly!® on public and private land.



High Ground Clearance You want rugged? You got rugged. High ground clearance, and short front and rear overhangs permit confident maneuvering over rough trails and uneven surfaces—even the ability to cross shallow streams. **4-Mode 4WD** This 4WD all-the-time feature is what makes Grand Vitara an authentic class leader. Built right into the center dash, the 4WD control knob has four modes for different conditions. *Low Range Lock*, which really differentiates Grand Vitara from wannabe SUVs, kicks in extra low-end traction for very difficult situations and true off-road adventures. *High Range* provides AWD for most conditions, enhancing traction on most road conditions regardless of seasonality. *High Range Lock* gives more traction through snow or mud. And *Neutral* frees the central differential, providing less wear and tear should you tow your 4-Mode 4WD Grand Vitara behind your RV. More good news: you won't rack up any miles when you tow with this model. Some features may not be available on some models. Please refer to Specifications pages for complete information.

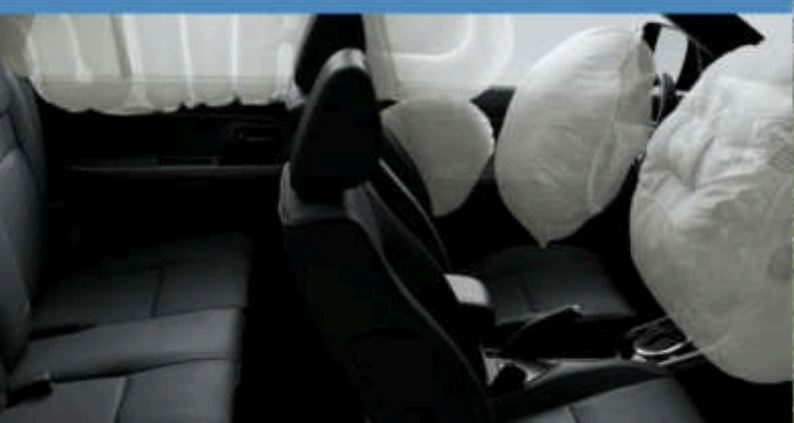


EVEN ITS SAFETY FEATURES ARE hardcore

No matter what adrenaline-fueled sport you're into, safety is your most powerful ally. And now so is the Grand Vitara. Should the unavoidable happen, it's comforting to know that Grand Vitara's got your back with dual safety systems: one that gives extra control to help avoid problems, the other to help protect should the unpredictable happen. Bottom line? Grand Vitara doesn't mess around, especially when it comes to safety.

Team Traction Grand Vitara's standard (yes, standard) Electronic Stability Program (ESP®) with traction control system (TCS) and anti-lock brake system (ABS) automatically monitor and adjust the braking system and engine torque, and may help prevent understeer and oversteer. **Tire Pressure Monitoring System (TPMS)** This system keeps tabs on tire inflation to help improve wear, gas mileage and overall safety. Please see Specifications pages for more information. **Comprehensive Airbag System** The Grand Vitara offers a comprehensive passive safety system that features both side-curtain airbags and driver and front-passenger seat-mounted side airbags to help protect occupants in the event of a collision. In addition, second-generation, advanced dual-stage front airbags deploy with less force depending on need, using an advanced front-passenger-seat weight-sensing feature. Some features may not be available on some models. Please refer to Specifications pages for complete information.

®ESP is a registered trademark of DaimlerChrysler AG.



Grand Vitara Luxury Package shown. Some features may not be available on some models. Please refer to Specifications pages for complete information.



PACKAGES AND ACCESSORIES FOR LIFE

When you live life your way, you want an SUV that's equally distinctive. That's why Suzuki offers you a choice of three different trim levels for Grand Vitara. Plus a wide range of accessories to customize your vehicle the way you want. From special wheels and a portable connection for your audio player to a bike carrier and racy rear spoiler. You and Grand Vitara. Two rugged individuals.

Grand Vitara X-Sport Package shown. Some features may not be available on some models. Please refer to Specifications pages for complete information.



PACKAGES: Every Grand Vitara comes with a **standard V6 engine**, electronic stability control and available **4-Mode 4WD**. But hey, life's all about choices. That's why Grand Vitara offers you two different packages to choose from, in addition to the base model. **X-Sport**—Be a sport and you'll get fog lamps, 16" aluminum-alloy wheels and the ingenious SmartPass™ keyless remote entry and start system. **Luxury**—From the lap of luxury you'll enjoy 17" alloy wheels, a sunroof, heated leather front seats, heated outside mirrors and the extremely handy HomeLink® remote control system. Some features may not be available on some models. Please refer to Specifications pages for complete information.

HomeLink is a registered trademark of Johnson Controls, Inc.

ACCESSORIES: **Fog Lamps** Mist? Rain? Fog? These lamps give you more visibility and make you more visible to other drivers. **17" Alloy Wheels** It's not polite to stare, but people won't be able to take their eyes off these rims. You want to get noticed? Get these. **iPod®-Compatible** Purchase an iPod® Integration Kit and take all your music along for the ride. **Rear Spoiler** Feeling racy? You'll look it too with this Suzuki Techno Works (SWT) spoiler. Sweet. **Bike Carrier** Head for the hills with this stylish bike rack—one complete package with lock core and keys.

See your Suzuki dealer for a full lineup of accessories to add to your vehicle. iPod® is a registered trademark of Apple Computer, Inc. All rights reserved.



SPECIFICATIONS, COLOR AND FABRIC COMBINATIONS

	GRAND VITARA	GRAND VITARA X-SPORT	GRAND VITARA LUXURY
GRAND VITARA SPECIFICATIONS AND FEATURES			
ENGINE			
2.7-liter, 24-valve DOHC V6 engine	S	S	S
185 horsepower @ 6,000 rpm, 184 lb.-ft. of torque @ 4,500 rpm	S	S	S
Zero-maintenance, self-adjusting timing chain	S	S	S
TRANSMISSION			
5-speed manual transmission	S	—	—
5-speed electronically controlled automatic transmission	O	S	S
Rear-wheel drive	S	S	S
4-Mode full-time 4WD system with transfer case lock and low-range gear	O	O	O
BODY/SUSPENSION/CHASSIS			
Unibody chassis with built-in ladder frame	S	S	S
4-wheel fully independent suspension	S	S	S
Power-assisted rack-and-pinion steering	S	S	S
Liquid-filled engine mounts	S	S	S
EXTERIOR FEATURES			
Steel wheels with full covers	16"	—	—
Aluminum-alloy wheels	—	16"	17"
Front fog lamps	—	S	S
Heated mirrors	S	S	S
Roof rails	—	S	S
Rear privacy glass	—	S	S
Variable intermittent front windshield wipers, rear wiper/washer/defroster	S	S	S
Rear-mounted full-size spare tire with cover	O ¹	S	S
COMFORT AND CONVENIENCE			
Air conditioning with automatic climate control micron air-filtration system	S	S	S
SmartPass [®] keyless entry and start system with panic button	—	S	S
Remote keyless entry with panic button	S	—	—
HomeLink ³ wireless control system	—	—	S
Power tilt-and-slide sunroof	—	O	S
Power windows, door locks and mirrors, with illuminated auto-down driver's window switch	S	S	S
Auto on/off headlamps	S	S	S
Cruise control	S	S	S
Outside-temperature and fuel-consumption gauges	S	S	S
Center armrest with storage compartment	S	S	S
Brushed aluminum-look trim	S	S	—
Woodgrain trim accents	—	—	S
Cargo cover	S	S	S
Floor mats	S	S	S
AUDIO SYSTEMS			
4-speaker AM/FM/CD audio system with MP3/WMA ⁴ playback, XM [®] Ready	S	—	—
7-speaker AM/FM/CD audio system with in-dash 6-disc changer, MP3/WMA ⁴ playback, subwoofer, XM [®] Ready	—	S	S
Steering-wheel-integrated audio controls	S	S	S

	GRAND VITARA	GRAND VITARA X-SPORT	GRAND VITARA LUXURY
GRAND VITARA SPECIFICATIONS AND FEATURES			
SEATING			
Leather-trimmed seating surfaces, heated front seats	—	—	S
6-way adjustable driver's seat	S	S	S
Reclining, 60/40 split fold-and-tumble rear seats	S	S	S
SAFETY FEATURES			
4-wheel antilock brake system (ABS) with electronic brake-force distribution (EBD)	S	S	S
Electronic Stability Program (ESP) ⁵ including traction control system (TCS)	S	S	S
Advanced dual-stage driver and weight-sensing front-passenger airbags supplemental restraint system (SRS)	S	S	S
Front seat-mounted side impact airbags (SRS)	S	S	S
2-row side curtain airbags (SRS)	S	S	S
Tire pressure monitoring system (TPMS) ⁶	S	S	S
Height-adjustable front safety belts with pretensioners	S	S	S
Headrests and 3-point safety belts at all five seating positions	S	S	S
Rear child-seat LATCH system (Lower Anchors and Tethers for Children) and rear-door child safety locks	S	S	S
Daytime running lights (DRL)	S	S	S
INTERIOR DIMENSIONS			
Headroom, front/rear (in.)	40.0/38.2	40.0/38.2	38.2/38.2
Legroom, front/rear (in.)	41.3/37.2	41.3/37.2	41.3/37.2
Shoulder room, front/rear (in.)	56.3/54.9	56.3/54.9	56.1/54.9
Hip room, front/rear (in.)	55.5/44.0	55.5/44.0	55.5/44.0
EXTERIOR DIMENSIONS			
Wheelbase (in.)	101.9	101.9	101.9
Overall length (in.)	176.0	176.0	176.0
Overall width (in.)	71.1	71.1	71.1
Overall height (in.)	66.7	66.7	66.7
CAPACITIES			
Interior volume (cu. ft.)	125.4	125.4 ⁷	121.9
Cargo index (SAE), rear seat up/down (cu. ft.)	24.4/68.9	24.4/68.9 ⁸	23.8/67.3
Tow rating (lb.)	3000	3000	3000
Fuel capacity (gal.)	17.4	17.4	17.4
CURB WEIGHTS			
Manual, 2WD/4WD (lb.)	3452/3582	—	—
Automatic, 2WD/4WD (lb.)	3505/3682	3505/3682	3505/3682
EPA ESTIMATED FUEL ECONOMY			
2WD/4WD manual city/highway (mpg)	18/23	—	—
2WD automatic city/highway (mpg)	19/24	19/24	19/24
4WD automatic city/highway (mpg)	19/23	19/23	19/23

S = Standard O = Optional — = Not Available
¹WVD only. ²Includes full-size spare cover as an accessory. ³HomeLink is a registered trademark of Johnson Controls, Inc. ⁴ESP[®] is a registered trademark of DaimlerChrysler AG. ⁵The tire pressure monitoring system (TPMS) is not a substitute for regular tire pressure inspections. Tire pressures should be checked at least monthly using a tire pressure gauge. Maintaining the recommended tire pressure can help avoid performance problems, tire damage and premature wear. See the Owner's Manual for additional details. ⁶Front headroom changes to 38.2" with optional sunroof. ⁷With optional sunroof. 121.9. ⁸With optional sunroof 23.8/67.3. Make sure to go to suzuki.com for the latest specification information.



Pearl White



Black Onyx Pearl



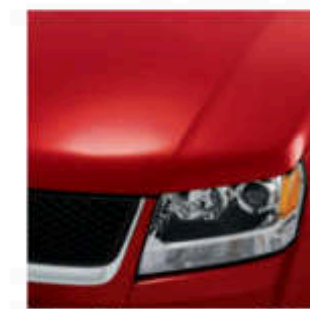
Clear Beige Metallic



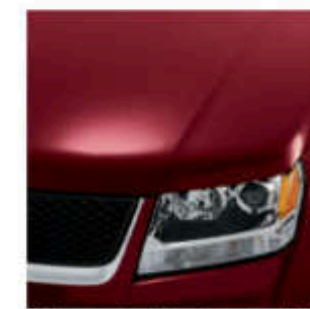
Azure Grey Metallic



Silky Silver Metallic



Racy Red



Shining Red Pearl

	2-tone Beige Leather Grand Vitara Grand Vitara X-Sport
	Black Leather Grand Vitara Luxury
	Black Fabric Grand Vitara Luxury



AMERICA'S #1 WARRANTY

100,000 MILES/7 YR • NO DEDUCTIBLE • FULLY TRANSFERABLE

Why is it America's #1? It's the only 100,000-mile/7-year powertrain limited warranty around that doesn't have a deductible and is fully transferable for the life of the warranty. That's huge, and that's why the other guys don't talk about deductibles and transfer capability. No deductible means covered repairs are covered—you don't pay anything for parts and labor. Fully transferable means the warranty can pass from one owner to the next, increasing resale and trade-in value when it's time to buy your next car. With coverage extended for 100,000 miles or 7 years, whichever comes first, you can average a more than reasonable 14,000 miles per year. The strength of this long-term powertrain protection is compounded by a 36,000-mile/3-year new-vehicle limited warranty that also has no deductible and covers everything from the dome light to the exhaust pipe (except the battery, which is covered for 24,000 miles, and tires, which are covered by the tire manufacturer's warranty), and includes comprehensive 24-hour Roadside Assistance as well as a convenient Courtesy Vehicle Program. So...that's why we can say it's America's #1. Sounds good, doesn't it!

100,000-Mile/7-Year Powertrain Limited Warranty: Every 2007 Suzuki comes standard with America's #1 Warranty: a 100,000-mile/7-year, fully transferable, 50-deductible, powertrain limited warranty. **Duration:** Covers 100,000 miles or 7 years, whichever comes first. This provides owners over 14,000 miles of coverage per year. **Fully Transferable:** Unlike many other warranties, ours can be transferred from owner to owner, adding value at the time of resale or trade-in. **No Deductible:** If any covered repairs are necessary within 100,000 miles or 7 years, whichever comes first, there is no charge for parts and labor. **Suzuki's New-Vehicle Limited Warranty:** Covers all components of the vehicles as supplied by Suzuki for 36 months or 36,000 miles, whichever comes first. The battery is covered for 24,000 miles. Tires are covered by a separate warranty from the tire manufacturer. There is no deductible. Any repairs to correct defects in materials will be made with no charge for parts or labor. Should original body sheet-metal panels develop perforation due to corrosion, they're covered for 36 months, with no limit on mileage. **Roadside Assistance Program:** Covers any new Suzuki vehicle during the 36,000-mile/3-year new-vehicle limited warranty period. Roadside Assistance is available 24 hours a day, 365 days a year, in the U.S. and Canada. **Courtesy Vehicle Program:** The Warranty Repair Courtesy Vehicle Program is administered through Suzuki dealers and Enterprise Rent-A-Car. If a Suzuki vehicle is rendered inoperable, unsafe or illegal to operate due to a defect in materials or workmanship, and is required to stay overnight at a Suzuki dealer to complete a warranty repair during the 36,000-mile/3-year new-vehicle limited warranty period, your Suzuki dealer will provide a courtesy rental vehicle for up to five days, for up to 530 a day, through Enterprise Rent-A-Car.



Way of Life!

suzukiauto.com

© American Suzuki Motor Corporation 2006 • P.O. Box 1100, Brea, CA 92822-1100
1-877-MY-SUZUKI (1-877-697-8985)



XL7



GRAND VITARA



SX4



FORENZA



FORENZA WAGON



RENO



AERIO

Drive responsibly. Buckle up for safety—don't drink and drive. WARNING: Sport Utility Vehicles handle differently from ordinary passenger cars. Avoid sharp turns and abrupt maneuvers. Always wear your seatbelt. For specific details, please read your Owner's Manual for on- and off-road driving tips. To avoid injury from an airbag, always place children 12 years old and under in the rear seat; always move both driver and passenger seat as far back from airbag as practical; never transport a child in a rear-facing child seat in the front seat; and always use the seatbelts and buckle up properly. Always keep cargo loads within specified weight limits; distribute cargo evenly and secure it from shifting. Specifications and equipment based on information available at time of printing, subject to change without notice or obligation and may differ in each sales area. All model comparisons based on manufacturers' Web sites as of 7/06. Some vehicles shown with optional equipment. For more details on 2007 options, accessories, warranty and specifications, contact your local Suzuki dealer, Suzuki, the "S" logo, and Suzuki model names are Suzuki trademarks or ®. "Tread Lightly!" on public and private land. Along with concerned conservationists everywhere, Suzuki urges you to preserve your future off-road driving opportunities by showing respect for the environment, local laws and the rights of others. Whether you buy or lease a Suzuki vehicle, American Suzuki Financial Services can assist you with the process. Ask your dealer which lease or purchase plan best suits your needs.

