

GRAND VITARA



Way of Life!

Consider This Your All-Access Pass

While conventional wisdom states that compact SUVs can't hold their own off road, Suzuki is happy to turn convention on its head with the Grand Vitara. Not only does the Grand Vitara have 4-Mode 4WD™ available to take you most anywhere in this world you'd like to go, it also has over 40 years of Suzuki off-road heritage to back it up. And when you find yourself in more civilized environs, the Grand Vitara delivers a level of comfort that makes day-to-day driving a joy. Which means no matter where the road takes you, or whether there even is a road, the Grand Vitara is always good to go.





Capable. Affordable.

The Grand Vitara is one of the few affordable SUVs in the world that offer the confidence of available full-time 4-Mode 4WD. This advanced system features a lockable center differential as well as a low-range two-speed transfer case, all of which can be engaged to maximize traction whenever road conditions demand it. So whether you're heading up a snowy mountain pass or making your way around a fallen tree in the road, you're covered.





4-Mode 4x4

In addition to offering a mode to match any driving condition you may encounter, this advanced 4WD system even offers a Neutral setting, so you can easily flat-tow it behind your RV.



4H Mode

The ideal mode for most driving, 4H mode offers the appropriate front/rear torque split for smooth, quiet on-road performance plus impressive off-road traction.

4H Lock

For serious off-roading, this high-range 4x4 mode evenly distributes traction to front and rear wheels for powering through snow or mud.



4L Lock

With a transfer gear ratio nearly twice that of 4H Lock mode at 1.970, this low-range 4x4 mode helps ensure enough low-end traction to get out of difficult conditions.





Hardy, But Not Foolhardy

We equip every Grand Vitara with a host of state-of-the-art passive and active safety systems, including six standard airbags, energy-absorbing front and rear crumple zones, side-impact door beams and Electronic Stability Program (ESP®) stability control. Because while it may be impossible to predict the future, you can always be prepared for it.¹



Independent Suspension

The fully independent suspension features front MacPherson struts and rear multi-link geometry, complementing the "Built-In Ladder Frame" and decreasing cabin noise while increasing on-road response and off-road handling.

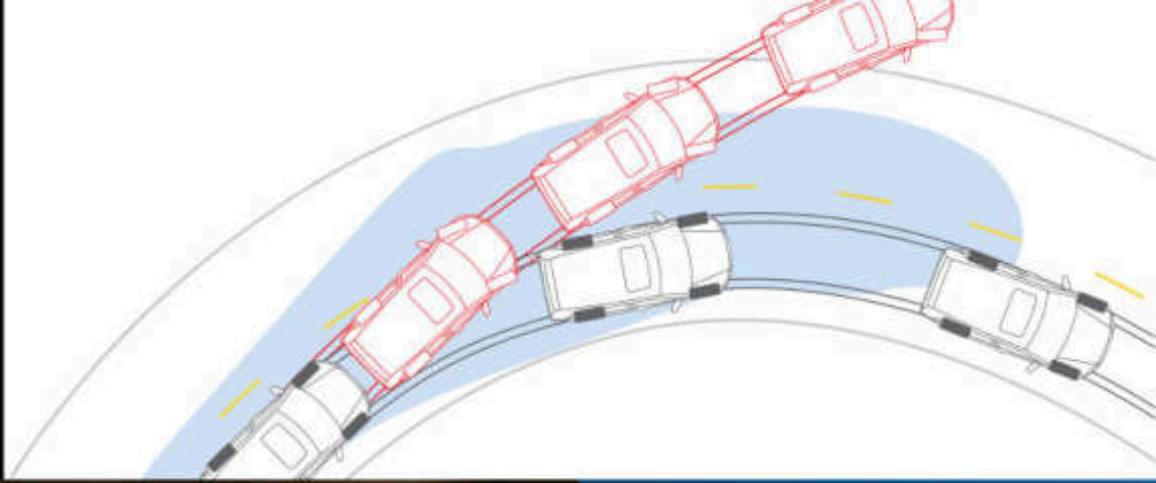
Built-In Ladder Frame

By integrating a ladder frame to a unibody, the Grand Vitara's construction increases rigidity and durability. This lightweight, one-piece body reduces floor and overall heights, increasing cabin space despite its high ground clearance. Adding the fully independent suspension further enhances resistance to twisting and flexing while contributing to linear handling response for smoother on-road cruising and impressive off-road traction.



Electronic Stability Program (ESP®)

This system supplements Grand Vitara's inherent stability with three major functions: ABS with EBD, traction control and stability control. ESP's ECU uses various sensors to help hold the intended cornering line, increasing traction and stability control while reducing front and rear wheel slip for enhanced safety.¹

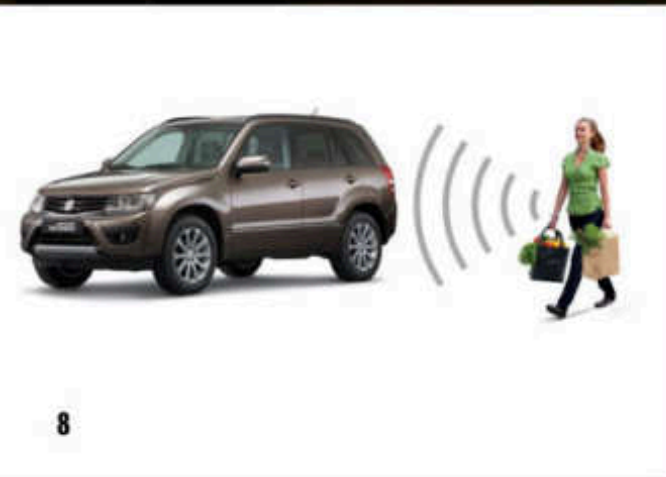


Six Standard Airbags

Grand Vitara's advanced supplemental restraint system (SRS) includes dual front airbags, front seat side-impact airbags and two-row side curtain airbags. Front protection is so good the Insurance Institute of Highway Safety (IIHS) gives it the highest rating of "Good."²

Sophisticated and Streetwise

We spent a lot of time making the Grand Vitara a monster in the mud, but that doesn't mean that we forgot to make it refined for everywhere else. Its styling is aggressive yet sophisticated, featuring trim proportions ideal for the urban dweller as well as the weekend outdoorsman. Inside, you'll find plenty of creature comforts, including a standard in-dash, voice-activated navigation and entertainment system with Bluetooth® connectivity and a host of other features. After all, just because you're in the middle of nowhere doesn't mean you can't be civilized.



TouchFree Smart Key™

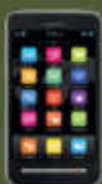
When you approach, Grand Vitara senses your TouchFree Smart Key, allowing you to open your locked door and start your vehicle without ever removing the key from your pocket or purse.





Automatic Climate Control

Never be too hot or too cold again. Just set the system to your desired temperature and forget it.



Smart Phone
Compatible



Bluetooth



Pandora®



Voice
Command



Real-Time
Traffic

Advanced Audio with Navigation

Grand Vitara's new multimedia system offers a host of advanced features including easy-to-use, voice-activated navigation with fuel-saving route guidance, millions of points of interest and available Real-Time Traffic; Bluetooth wireless technology, and an audio system that lets you listen to AM/FM radio, Pandora® on your iPhone®, audio files on an SD card or USB drive, CDs, and Bluetooth-capable audio devices.²

Hospitality Meets Versatility

The Grand Vitara's spacious interior is unquestionably agreeable, but there's much more to it than mere comfort. The rear seats split and fold in 60/40 proportions to offer you more than enough options for transporting passengers, cargo or both. Fold the rear seats forward, and you'll open up to plenty of cargo space.



Noise and Vibration Reduction

Our engineers conducted a series of comprehensive tests to help identify areas where external noise and vibration were infiltrating the cabin environment. Then, additional sound and vibration dampening measures were applied to those areas to create the hushed ride that you'll enjoy in the Grand Vitara.





Heated Leather Seats

These available seats feature 6-way adjustability and are just what you need to stay warm on chilly mornings.



Power 1-Touch Sunroof

Take in more of the great outdoors. The available sunroof not only lets the sun shine in but offers you a window to the moon and stars.





Grand Vitara Features

GRAND VITARA

MECHANICAL

- 2.4-liter DOHC 4-cylinder engine with 166-hp and 162 lb-ft of torque
- Rear-wheel drive (RWD)
- 5-speed manual transmission
- 16-inch steel wheels
- Fully independent suspension—multi-link rear, MacPherson-strut front

EXTERIOR

- Automatic-control projector beam headlamps
- Power side mirrors
- Variable intermittent front and rear wipers

INTERIOR

- Automatic climate control with pollen filter
- Advanced voice-activated touchscreen navigation and audio system with¹
 - Real-Time Traffic
 - USB input for iPhone/iPod/smartphone
 - Bluetooth hands-free calling and streaming audio
 - CD/SD/AM/FM radio
- Steering-wheel audio controls
- Power door locks and windows with driver's auto down
- Trip computer (MPG, outside temperature, range)
- Remote keyless entry system with panic alarm
- Sun visors with vanity mirrors and extensions
- Dual power outlets
- 60/40 split-folding and reclining rear seats
- Cargo hooks and underfloor storage
- Cargo light and 12V power outlet
- Cargo cover

SAFETY

- Electronic Stability Program (ESP®)²
- Six airbags Supplemental Restraint System (SRS) including:
 - Dual front advanced airbags
 - Side curtain airbags, front and rear
 - Front side-impact airbags
- Bosch 4-wheel Anti-lock Braking System (ABS)
- Electronic Brake-force Distribution (EBD)
- Brake Assist
- Three rear child-seat tether anchors
- Dual rear child-seat ISOFIX anchors
- Tire Pressure Monitoring System (TPMS)³
- Side-impact door beams, front and rear
- Daytime running lights (DRL)

AVAILABLE EQUIPMENT

- Rear-vision camera (accessory)⁷

PREMIUM

Includes all Grand Vitara plus

MECHANICAL

- Automatic transmission (AT)
- Alloy wheels

EXTERIOR

- Privacy glass
- Heated outside mirrors (4WD models only)

INTERIOR

- Cruise control

AVAILABLE EQUIPMENT

- AWD
- Rear-vision camera (accessory)⁷

LIMITED

Includes all Premium plus

MECHANICAL

- 18-inch alloy wheels
- Flat-tow capability (4WD models only)

EXTERIOR

- Power glass sunroof with tilt feature and 1-touch control
- Heated outside mirrors
- Fog lamps
- Side mirrors with integrated turn signals
- Chrome door accents
- Rear-mounted spare tire

INTERIOR

- Leather-appointed interior
- TouchFree Smart Key keyless start and entry system
- Heated front seats
- Premium audio with 7 speakers
- Wood grain interior accents
- Leather-wrapped steering wheel

AVAILABLE EQUIPMENT

- 4-Mode 4WD with low-range gearing
- Rear-vision camera (accessory)⁷



FOR MORE INFO, VISIT SUZUKIAUTO.COM



¹Electronic stability control cannot be relied upon to prevent accidents due to abrupt steering, carelessness or dangerous driving techniques. ESP is a registered trademark of Daimler AG. ²Based on 2012 model year Insurance Institute of Highway Safety frontal ratings from iihs.org. An airbag supplements the crash protection offered by seat belts. The driver and all occupants must be properly restrained by wearing seat belts at all times to minimize the risk of severe injury or death in the event of a crash. ³Not all services available in all areas. Subscription required at extra cost. ⁴The Tire Pressure Monitoring System (TPMS) is not a substitute for regular tire pressure inspections. Tire pressure should be checked at least monthly using a tire pressure gauge. Maintaining the recommended tire pressure can help avoid performance problems, tire damage and premature wear. See the Owner's Manual for additional details. ⁵Overall length 177.2 on Limited with spare tire. ⁶Gas mileage based on EPA mileage estimates, sourced from fuelconomy.gov. Actual mileage may vary based on options, driving conditions, driving habits and vehicle's condition. ⁷A rear-vision camera is a convenience feature and is not a substitute for looking to the rear and using rearview mirrors. Drivers should ensure the area is clear when driving in reverse. New Suzuki automobiles come standard with a 100,000-mile,

Grand Vitara Specifications

INTERIOR DIMENSIONS

Head Room, front/rear (in)	40.1/38.2 (38.3/38.2 with sunroof)
Leg Room, front/rear (in)	41.3/37.2
Shoulder Room, front/rear (in)	56.4/54.9
Hip Room, front/rear (in)	55.2/44.0

EXTERIOR DIMENSIONS

Wheelbase (in)	103.9
Overall Length x Width x Height (in)	169.3 ^a x 71.3 x 66.3 (66.7 4WD)

CAPACITIES

Seating (passengers)	5
Interior Volume (cu ft)	111.1 (108.6 with sunroof)
Cargo Volume (SAE), rear seat up/down (cu ft)	28.4/70.8 (26.6/66.3 with sunroof)
Tow Rating (lb)	3,000
Fuel Tank (gal)	17.4

EPA ESTIMATED FUEL ECONOMY*

MT RWD, city/highway (mpg)	19/26
AT RWD (4WD), city/highway (mpg)	19/25 (19/23)



Pearl White



Silky Silver Metallic



Black Pearl



Nocturne Blue Metallic



Phoenix Red Metallic



Gaia Bronze Metallic



Bison Brown Metallic

ACCESSORIES (Visit SuzukiAuto.com for a complete list of accessories.)



Roof Rack Cross Bars
For models with factory-installed roof rails, these cross bars add versatility.



Side Moldings
Mounted with adhesive strips, these polyurethane moldings help protect your paint.



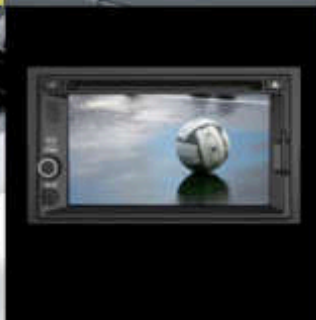
Side Window Visors
Help keep out wind and rain while allowing fresh air in.

All-Weather Floor Mats
Rubberized All-Weather Floor Mats have a unique edge lip to help keep dirt and debris off the carpet.



Bumper Protector
Keeps the top of Grand Vitara Limited's rear bumper scuff- and scratch-free.

Rear-Vison Camera
This backup camera reveals the area behind the vehicle that's visible to the camera.[†]



7-year powertrain limited warranty. For more information on America's #1 Warranty, please visit Suzuki.com or see your local authorized dealer and the new warranty booklet for full details. Bluetooth and iPhone are registered trademarks. Audio player sold separately. Pandora is a registered trademark of Pandora Media, Inc. Requires compatible smartphone app and active data service. Drivers and/or passengers could be subject to data service overage charges should the drivers and/or passengers exceed the limits of the data service plan. Professional driver under controlled environment. Be extra careful on difficult terrain. Some models shown with optional equipment and accessories or non-U.S. equipment. Along with concerned conservationists everywhere, Suzuki urges you to Tread Lightly![®] on public or private land. Specifications, comparisons and equipment are based on information available at time of printing and subject to change without notice. For more information, contact your local Suzuki Dealer or visit Suzuki.com. ©American Suzuki Motor Corporation 2012. Suzuki, the "S" logo and Suzuki model names are Suzuki trademarks or ®.





Way of Life!