



K I Z A S H I

SUZUKI 2011





KIZASHI: SOMETHING GREAT IS COMING

T R A V E L L I G H T

L I V E F U L L Y

HERITAGE

PERFORMANCE

FEATURES

SAFETY

AWD

SPECS





STYLE THAT MOVES YOUR SENSES — AND YOUR PULSE

REFINED

STRENGTH



KIZASHI SPORT GTS

Shown in Platinum Silver Metallic

HERITAGE

PERFORMANCE

FEATURES

SAFETY

AWD

SPECS



SHORTLY AFTER ITS 2010 LAUNCH, AUTOPACIFIC RECOGNIZED

KIZASHI® AS ACHIEVING **THE HIGHEST OVERALL**

SATISFACTION OF ANY 2010 VEHICLE —
CAR OR TRUCK — IN AMERICA¹. AND FOR 2011,
WE'VE ONLY MADE IT BETTER.



HONED ON THE

ROADS OF EUROPE AND THE

U.S., KIZASHI MASTERED THE

JARRING CURVES OF NÜRBURGRING,

THE FLAT-OUT SPEEDS OF

THE AUTOBAHN AND THE

CHALLENGING DIVERSITY

OF AMERICAN HIGHWAYS

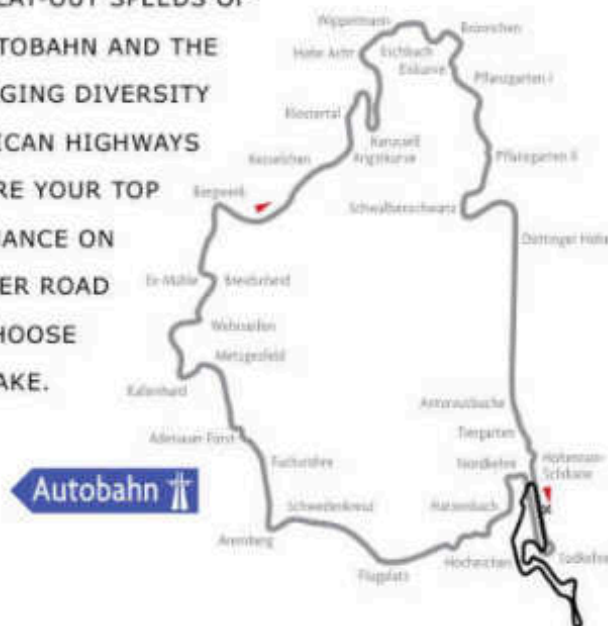
TO ENSURE YOUR TOP

PERFORMANCE ON

WHATEVER ROAD

YOU CHOOSE

TO TAKE.



Autobahn

SUZUKI LEADS WITH THE #1 CAR IN JAPAN
FOR FRONT RUNNER



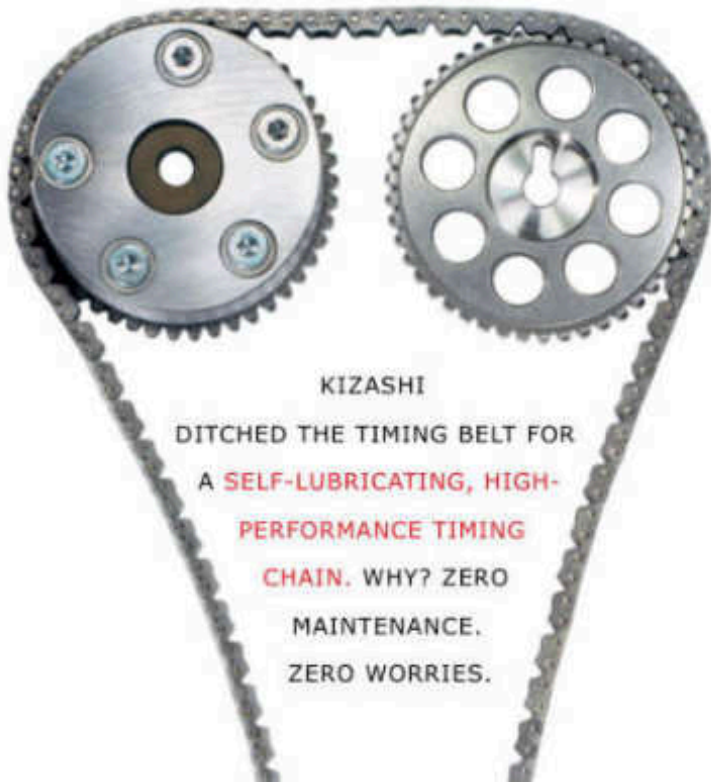


LIKE THE HAYABUSA², UNSURPASSED IN PERFORMANCE, EVERY FIBER OF KIZASHI IS INFUSED WITH SUZUKI'S **TIME-HONORED, BOLD DNA FOR ENGINEERING SUPREMACY** — A NEW WARRIOR DESTINED TO UPHOLD AN ENVIABLE TRADITION OF PERFORMANCE.



HIGH MARKS

With over 50 years of experience creating world-class machines that are high on performance and style, Suzuki[®] launched Kizashi, engineered to perfection and tested in the extreme.



KIZASHI DITCHED THE TIMING BELT FOR A **SELF-LUBRICATING, HIGH-PERFORMANCE TIMING CHAIN**. WHY? ZERO MAINTENANCE. ZERO WORRIES.



TO THE SUN-BAKED DESERTS,



AROUND-THE-WORLD DURABILITY TESTING FROM THE FRIGID ARCTIC

NO CLIMATE WAS LEFT UNCONQUERED.



HERITAGE

PERFORMANCE

FEATURES

SAFETY

AWD

SPECS



KIZASHI SE WITH OPTIONAL EQUIPMENT

Shown in Vivid Red



HERITAGE

PERFORMANCE

FEATURES

SAFETY

AWD

SPECS

A close-up photograph of a person's hand resting on a steering wheel. The hand is positioned over a gear shift knob. The gear shift knob is black with a silver-colored top edge and features a white H-pattern with the numbers 1, 3, 5, 2, 4, 6, and R. The background is dark and out of focus, showing parts of the car's interior.

CHURNS UP A SUBLIME 185 HORSEPOWER (MT)

P O W E R F U L

EXCITEMENT



HERITAGE

PERFORMANCE

FEATURES

SAFETY

AWD

SPECS

KIZASHI SPORT GTS
Shown in Vivid Red

FORGED CRANKSHAFT
AND STEEL-LINED CYLINDERS

ONE OF THE MOST **POWERFUL**
STANDARD ENGINES IN ITS CLASS **185-HP***

23/31 MPG BASED ON EPA
MILEAGE ESTIMATES FOR KIZASHI CVT FWD4

ADVANCED **VARIABLE INDUCTION SYSTEM (VIS)**
FOR MORE USABLE TORQUE AT A WIDE RANGE OF SPEEDS



IT'S A YIN-YANG. KIZASHI'S IMPRESSIVE POWER AND PERFORMANCE ARE
MATCHED BY THE EQUALLY COMMANDING AKEBONO® BRAKE COMPONENTS — THE SAME
BRAND THAT BRINGS JAPAN'S SCREAMING BULLET TRAINS TO A SAFE AND CONTROLLED STOP.



**TORSIONAL HIGH-
RIGIDITY UNIBODY
STRUCTURE**

HELPS ENSURE
A SUPERIOR
BLEND OF
SPORTY
HANDLING,
QUIETNESS
AND RIDE
COMFORT THAT
LEAVES EVERY
OTHER SPORTS
MODEL IN
THE DUST.

STRONG CREDENTIALS AND FRESH INNOVATION

P O T E N T

THE MULTI-LINK REAR SUSPENSION,
A FLOATING SUBFRAME AND A
HIGH-RIGIDITY UNIBODY STRUCTURE HELP
DELIVER THE PRECISE HANDLING PERFORMANCE
AND HELP REDUCE

VIBRATION



POWER ACCOLADES

"Handily beats the
dynamics of almost
everything else
in its price and/or
size class."

- Automobile Magazine

Automobile

"At the end of the
day, we walked away
thinking that the
Kizashi is the best
handling and most
composed FWD
sedan we've driven."

- AutoWeek Magazine

AW

VEHICLE	STANDARD HP	SKIDPAD	SLALOM	BRAKING (60-0)
KIZASHI 2.4L	185	1ST (0.87G)	1ST (48.9 MPH)	1ST (123 FT)
ACCORD® 2.4L	177	2ND TIE	3RD	5TH
ALTIMA® 2.5L	175	4TH	2ND	2ND
CAMRY® 2.5L	169	5TH	5TH	4TH
MAZDA6® 2.5L	170	2ND TIE	4TH	3RD

Performance data from Popular Mechanics, April 2010¹.

PADDLE SHIFTERS ON CVT SPORT MODELS ALLOW FOR QUICK, ON-THE-FLY, MANUAL SHIFTING.



THE AVAILABLE 18-INCH LIGHTWEIGHT ALUMINUM ALLOY WHEELS WITH HIGH-PERFORMANCE DUNLOP®
235/45-18 TIRES PROVIDE RESPONSIVE HANDLING AND FEEL WITH EXCELLENT ROAD TRACTION.



HERITAGE

PERFORMANCE

FEATURES

SAFETY

AWD

SPECS





KIZASHI SPORT SLS
Shown in Black Interior



HERITAGE

PERFORMANCE

FEATURES

SAFETY

AWD

SPECS



DIGITAL SOUND PROCESSOR



IPOD COMPATIBLE CONNECTION



USB & WIRELESS AUDIO STREAMING



BLUETOOTH HANDS-FREE CALLING

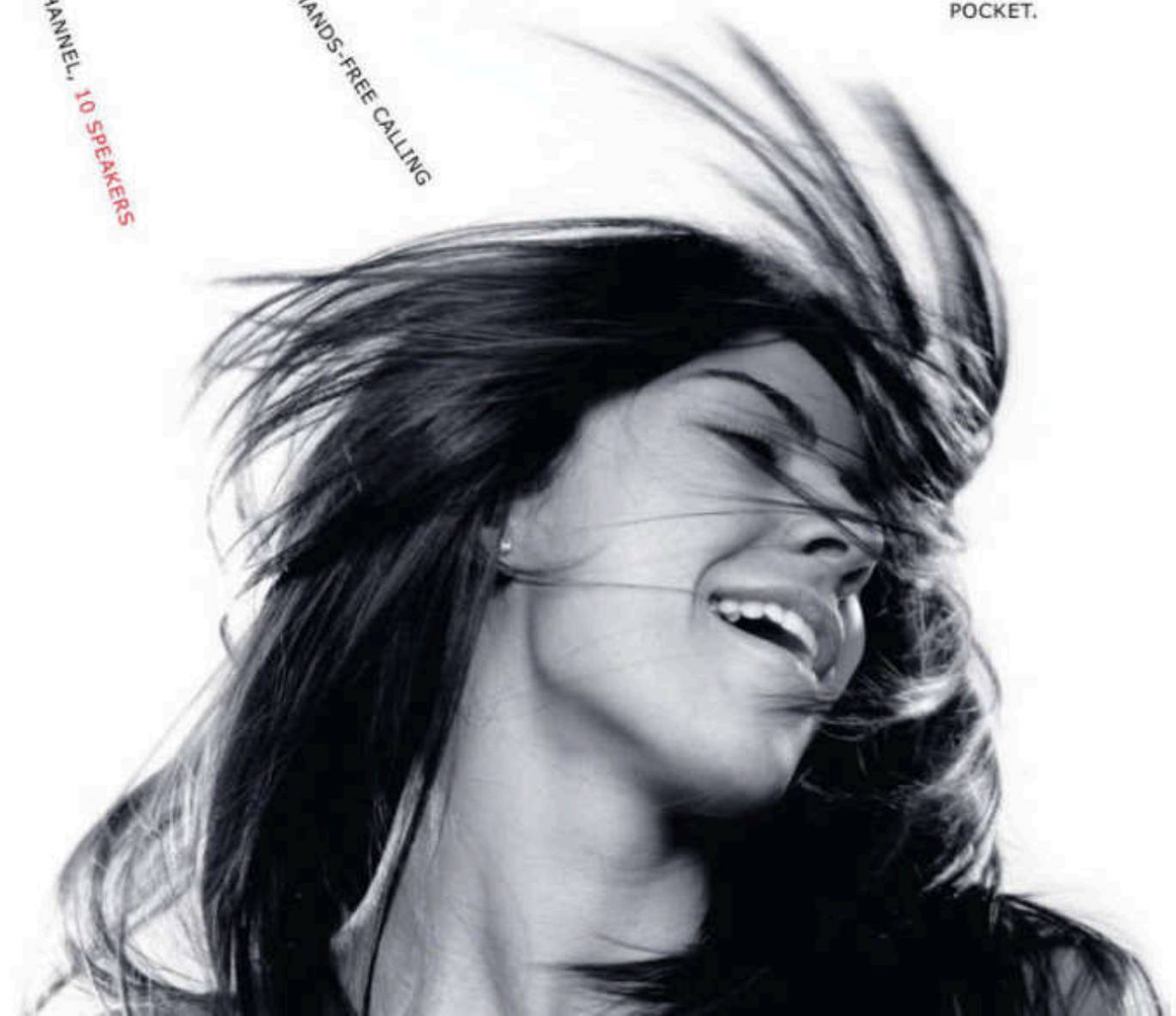


THE STANDARD SMARTPASS KEYLESS PUSH-BUTTON IGNITION WITH REMOTE ENTRY MEANS YOUR KEYS NEVER HAVE TO LEAVE YOUR POCKET.



POWERED BY A 425-WATT AMP

8-CHANNEL, 10 SPEAKERS



THE LOOK, FEEL AND SOUND OF QUALITY

LUXURY

WHAT'S IMPRESSIVE HERE IS THE HIGH-QUALITY FEEL OF THE INTERIOR — THE MATERIALS USED ON THE DASHBOARD AND DOOR PANELS ARE FIRST-RATE, AND ITS OVERALL LOOK CERTAINLY CLIMBS A FEW RUNGS ON THE LADDER OF SOPHISTICATION.

ROAD & TRACK December 2009



TOUCH OF CLASS

Kizashi marks a clear departure from traditional sedans with optimized sound reduction insulation and structure, high-quality finishes and materials, felt-covered glove compartment, door courtesy and front footwell lights.



STANDARD DUAL-ZONE TEMPERATURE CONTROLS LET YOU AND YOUR PASSENGER DEFINE PERSONAL PREFERENCES. A SALUTE TO THE NEW EQUALITY.

THE EXPERT TOUCH OF A LEADING ERGONOMIC SPECIALIST IS EVIDENT IN THE **STANDARD SPORT**

SEATS WITH AVAILABLE 10-WAY POWER DRIVER'S SEAT AND 3-POSITION MEMORY.

THE GENEROUS DIMENSIONS AND SPECIAL DENSITY FOAM HELP MINIMIZE DRIVER FATIGUE. CHOOSE HIGH-QUALITY LEATHER OR DELUXE DENSELY WOVEN FABRIC, EACH FINISHED WITH FRENCH SEAM DETAILING.



HERITAGE

PERFORMANCE

FEATURES

SAFETY

AWD

SPECS



KIZASHI SPORT SLS
Shown in Black Interior*



HERITAGE

PERFORMANCE

FEATURES

SAFETY

AWD

SPECS





HERITAGE

PERFORMANCE

FEATURES

SAFETY

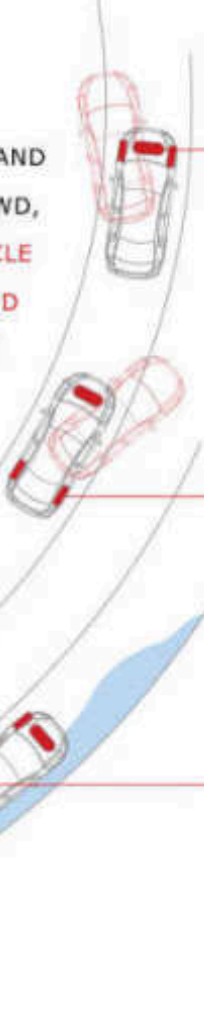
AWD

SPECS

KIZASHI SPORT GTS

Shown in Platinum Silver Metallic

SIMILAR TO NISSAN GT-R® AND PORSCHÉ'S NEW PANAMERA® AWD, KIZASHI'S INTELLIGENT VEHICLE STABILITY PROGRAM⁷ (I-VSP™) ON AWD MODELS INTEGRATES THE INTELLIGENT ALL-WHEEL DRIVE SYSTEM (I-AWD™) AND THE SOPHISTICATED ELECTRONIC STEERING SYSTEM TO HELP PROVIDE GREATER DRIVER CONTROL.



OVERSTEER

- Detects rear-wheel skid
- i-AWD transfers power to front wheels
- Boosts steering assistance

UNDERSTEER

- Detects front-wheel skid
- i-AWD transfers power to rear wheels

SPLIT SURFACE

- Detects low-left or right-side traction
- Transfers power to high-traction wheels
- Boosts steering assistance



THE AVAILABLE REAR SONAR PARKING ASSIST[®] MONITORS THE DISTANCE BETWEEN YOU AND LARGE OBJECTS BEHIND YOU — SOUNDING AN ALERT IF YOU GET TOO CLOSE!

SECURITY THROUGH INTEGRATED PRECISION

SAFETY CENTRIC





SUZUKI'S PROPRIETARY **TOTAL EFFECTIVE CONTROL TECHNOLOGY (TECT™)** COCOONS PASSENGERS WITHIN A LIGHT, ENERGY-ABSORBING BODY COMBINED WITH A SUPER-STRONG, DEFORMATION-RESISTING CABIN STRUCTURE THAT ABSORBS AND DISPERSES CERTAIN IMPACT.

2014
READY

Kizashi is one of few cars compliant with the 2014 NHTSA requirements. It meets future safety standards, such as Side-Impact Pole Collision test, Side-Impact Barrier Collision test and upgraded Front Collision test, embodying safety ahead of its time.

VEHICLE	NHTSA 2010 FRONT RATING	NHTSA 2010 REAR RATINGS	REAR SIDE-IMPACT AIR BAGS	ALL-WHEEL DRIVE TRACTION
KIZASHI 2.4L	*****	*****	STANDARD	AVAILABLE
FUSION® 2.5L	*****	****	NOT AVAILABLE	NOT AVAILABLE
ALTIMA® 2.4L	*****	****	NOT AVAILABLE	NOT AVAILABLE
ACCORD® 2.4L	*****	***	NOT AVAILABLE	NOT AVAILABLE
PASSAT CC® 2.0T	****	****	AVAILABLE	NOT AVAILABLE

NHTSA ESTIMATES THE LIKELIHOOD OF SERIOUS INJURY MAY DOUBLE BETWEEN 4-STAR AND 5-STAR FRONTAL OR SIDE CRASH RATINGS AND MAY QUADRUPLE BETWEEN 3-STAR AND 5-STAR RATINGS.

YOUR SAFETY IS OUR TOP CONCERN. KIZASHI BOASTS **EIGHT STANDARD AIR BAGS** — MORE THAN ANY COMPETITOR. WE'VE GOT YOU COVERED!



THE STANDARD PROJECTOR BEAM HEADLAMPS ARE ANYTHING BUT STANDARD. IN FACT, THEY THROW MORE LIGHT, MORE ACCURATELY THAN HALOGENS FOR ENHANCED SAFETY AND VISIBILITY IN ANY DRIVING ENVIRONMENT.

HERITAGE

PERFORMANCE

FEATURES

SAFETY

AWD

SPECS





SUZUKI



HERITAGE

PERFORMANCE

FEATURES

SAFETY

AWD

SPECS

KIZASHI SPORT SLS
Shown in Black Interior



OVER 40 YEARS OF INTENSE AWD DEVELOPMENT AND APPLIED DURABILITY BY SUZUKI PAY OFF IN **KIZASHI'S STANDOUT AWD SYSTEM.** A SUZUKI STRENGTH, UTILIZING A FAST-ACTING ELECTRONIC CLUTCH THAT MONITORS THROTTLE INPUT

AND STEERING ANGLE TO ANTICIPATE SLIPPAGE AND OPTIMIZE POWER DISTRIBUTION BEFORE YOU KNOW YOU NEED IT.

SUPERIOR CORNERING
Based on road conditions and steering wheel input, Kizashi's i-AWD system senses the turn and optimizes the torque distribution to the rear wheels for smooth, controlled cornering.



WITH PEERLESS FINESSE, KIZASHI CARRIES OFF A STUNNING INDUSTRY COUP — COMBINING THE **TRACTION, SAFETY AND PERFORMANCE** OF FULL-TIME AWD SYSTEMS OF EXPENSIVE LUXURY VEHICLES WITH THE **FUEL EFFICIENCY** OF ITS LESS POWERFUL, FWD COMPETITORS. VOILÀ!

FEEDFORWARD CONTROL
This key i-AWD system feature adjusts the distribution of engine power going to the rear wheels in accordance with road conditions and driving style for maximum AWD performance and minimal fuel consumption.

HIGH-PERFORMANCE AWD THAT WILL GRAB YOU AND THE ROAD

TRACITION





USE THE **PASS-THROUGH** OPENING FOR STOWING SKIS. FOR MORE SPACE, ONE OF THE FOUR **60/40 SPLIT REAR SEATBACK** CONFIGURATIONS IS SURE TO ACCOMMODATE.

AWD

OPTIMIZED

Befitting a high-end sports sedan, Kizashi's i-AWD system serves up top-performance and handling advantages in every weather and traction condition, while maximizing fuel economy.

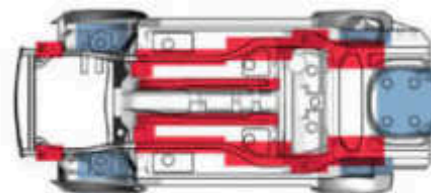


DRIVERS WILL FIND AN ENGAGING DRIVING EXPERIENCE HIGHLIGHTED BY A WELL-BALANCED CHASSIS AND AN ABUNDANCE OF GRIP AND STEERING.



February 2010

HIGHLY RUST-RESISTANT ZINC-ALLOY-PLATED STEEL MAKES UP 80 PERCENT OF THE BODY, KEEPING IT LOOKING GREAT AND ITS STRUCTURE UNCOMPROMISED FROM CORROSION.



FOR OPTIMUM CORROSION PROTECTION, ANTI-RUST WAX IS APPLIED TO THE INSIDE SURFACES AND SUSPENSION MOUNTINGS; **SEALANT COATS THE UNDERFLOOR MOUNTS AND WHEEL WELLS; AND RESIN PANELS HELP SHIELD THE SIDE SILLS AND UNDERBODY COMPONENTS FROM STONES, CORROSION AND ROAD SALT.**

HERITAGE

PERFORMANCE

FEATURES

SAFETY

AWD

SPECS

KIZASHI SPORT GTS
Shown in Platinum Silver Metallic

AMERICA'S #1 WARRANTY

REASSURANCE



7-
YEAR/

100,000-mile
powertrain limited
warranty has no
deductible, is fully
transferable and
includes a 24-hour
roadside assistance
package**.

HERITAGE

PERFORMANCE

FEATURES

SAFETY

AWD

SPECS

	S	SE	SPORT GTS	SPORT SLS
ENGINE AND DRIVETRAIN				
2.4-liter DOHC 4-cylinder engine with 185-hp (MT), 180-hp (CVT) and 170 lb-ft of torque	■	■	■	■
Front-Wheel Drive (FWD)	■	■	■	■
Advanced intelligent All-Wheel Drive (i-AWD™)	○	○	○	○
6-speed Manual Transmission (MT)	■	—	■	■
Performance-tuned Continuously Variable automatic Transmission (CVT) ¹¹	○	■	○	○
Steering-wheel mounted paddle shifters (CVT models only)	—	—	■	■
High-output dual exhaust system with integrated rear outlets	■	■	■	■
Zero-maintenance timing chain	■	■	■	■
WHEELS AND BRAKES				
18-inch sport lightweight alloy wheels with 235/45-18 Dunlop ¹² all-season tires	—	—	■	■
18-inch alloy wheels with 235/45-18 Dunlop ¹² all-season tires	—	■	—	—
16-inch steel wheels with full covers and 215/60-16 Dunlop ¹² all-season tires	■	—	—	—
4-wheel disc brakes with Akebono ¹³ components	■	■	■	■
Multi-link rear suspension with KYB ¹⁴ performance shocks	■	■	■	■
Sport-tuned suspension	—	—	■	■
EXTERIOR				
Front sport fascia, Aero Body Kit and rear spoiler	—	—	■	■
Power glass sunroof with tilt feature and 1-touch control	—	—	■	■
Projector-beam headlamps	■	■	■	■
Automatic headlamp control	—	—	—	■
Foglamps	—	—	■	■
Variable intermittent wipers	■	■	■	■
Automatic rain-sensing wipers	—	—	—	■
Power side mirrors (heated on AWD and SLS FWD)	■	■	■	■
Rear sonar parking assist ⁸	—	—	—	■
INTERIOR				
Navigation system with rear-vision camera and traffic information	—	—	○	○
Bluetooth ¹⁵ wireless streaming audio ¹⁶ and hands-free mobile phone connection	—	—	○	■
SmartPass ⁹ keyless push-button ignition and entry	■	■	■	■
Dual-zone automatic climate control with pollen filter and rear-seat vents	■	■	■	■
Sport seats with ergonomic design	■	■	■	■
Leather-appointed interior	—	—	—	■
Leather-wrapped steering wheel with cruise control and integrated audio controls	○	■	■	■
Leather-wrapped shift knob and parking brake lever	—	■	■	■
Leather sport steering wheel and automatic transmission shift knob	—	—	■	■
10-way power driver's seat adjustment with 3-position memory (includes power lumbar)	—	■	■	■
4-way power front passenger's seat	—	—	—	■
Heated front seats	—	—	—	■
Rockford Fosgate ¹⁷ 425-watt, 10-speaker, 8-channel AM/FM/CD/XM ¹⁸ audio system with subwoofer	—	—	■	■
7-speaker AM/FM/CD audio system with XM ¹⁸ compatibility (standard on S automatic transmission models) ¹⁹	■	■	—	—
USB ⁵ audio input ²⁰ (for MP3 or iPod ²¹ music player)	■	■	■	■
Tilt and telescoping steering wheel adjustment	■	■	■	■
Automatic day/night rearview mirror	—	—	—	■
Homelink ²² remote wireless control system	—	—	—	■
Information display (outside temperature, mpg, range, average speed)	■	■	■	■
Power windows (front auto up/down) and door locks	■	■	■	■
Sport gauges featuring backlit instrumentation	■	■	■	■
Interior lighting group (LED ambiance lights, including glove compartment, door courtesy and front footwell lights)	■	■	■	■
Overhead console with sunglasses holder	■	■	■	■
Center console storage and armrest storage compartments with power outlets	■	■	■	■

■ = Standard ○ = Optional — = Not Available

COLORS



White Water Pearl



Ice Blue Metallic



Deep Sea Blue Metallic



Platinum Silver Metallic



Azure Gray Metallic



Black Pearl Metallic



Vivid Red

ACCESSORIES



Ski/Snowboard Module



18-inch Chrome Wheels²⁴

CARGO

- 60/40 split-folding locking rear seats
- Rear center armrest with pass-through
- Trunk cargo restraint hooks
- Remote trunk release with valet lockout switch

SAFETY

- Electronic Stability Program with FWD
- Intelligent Vehicle Stability Program (i-VSP™) with AWD
- Bosch²² Anti-lock Braking System (ABS) with Electronic Brake-Force Distribution (EBD)
- Brake assist
- Dual front advanced air bags — Supplemental Restraint System (SRS)
- Side-impact air bags front and rear — outboard passengers
- Side curtain air bags covering front and rear
- Vehicle security system alarm with engine immobilizer
- 3-point front and rear seat belts with front height adjustment and pretensioners
- Rear child-seat tether anchors (x3) and rear child-seat ISOFIX anchors (x2)
- Side-impact door beams

INTERIOR DIMENSIONS

Head room, front/rear (in)	39.3 / 37.0
Leg room, front/rear (in)	41.7 / 35.6
Shoulder room, front/rear (in)	55.5 / 54.6

EXTERIOR DIMENSIONS

Wheelbase (in)	106.3
Overall length (in)	183.1
Overall width (in)	71.7
Overall height (in)	58.3

CAPACITIES

Seating (passengers)	5
Fuel (gal)	16.6

EPA ESTIMATED FUEL ECONOMY

6MT FWD, city/highway (mpg)	21/31	—	20/29	—
CVT FWD, city/highway (mpg)	23/31	23/30	23/30	23/30
CVT AWD, city/highway (mpg)	23/30	22/29	22/29	22/29

● Beige Fabric – S, SE
● Beige Leather – SLS

● Black Fabric – S, SE and GTS
● Black Leather – SLS

KIZASHI SE MODEL STANDARD FEATURES (ADDITIONAL TO S 6MT)

- Continuously Variable automatic Transmission (CVT) • 18-inch alloy wheels with 235/45-18 Dunlop²² all-season tires • Leather-wrapped steering wheel, shift knob and parking brake lever • Cruise control • Power 10-way memory driver's seat • AM/FM/CD audio system with USB input²³

KIZASHI GTS MODEL STANDARD FEATURES (ADDITIONAL TO SE)

- 6-speed manual transmission (FWD only) • 1-touch sunroof • Steering wheel paddle shifters (CVT only) • 425-watt Rockford Fosgate²⁷ 10-speaker audio system with subwoofer • 18-inch sport lightweight alloy wheels • Sport package with sport fascia, rear spoiler, Aero Body Kit, foglamps, sport suspension and sport steering wheel

KIZASHI SLS MODEL STANDARD FEATURES (ADDITIONAL TO GTS)

- Leather-appointed interior • Heated front seats • 4-way power front passenger seat • HomeLink²⁷ universal garage door opener • Automatic headlamps • Exterior heated mirrors • Auto dimming day/night mirror (inside) • Automatic rain-sensing wipers • Rear sonar parking assist⁸ • Integrated Bluetooth with streaming audio⁵

¹© 2010 AutoPacific, Inc. Vehicle Satisfaction Award. ²Suzuki engineered the Hayabusa for experienced riders. Avoid excessive speeds. Never carry passengers or engage in stunt riding. ³185-hp on MT. ⁴Sourced from fueleconomy.gov. ⁵USB device, iPod[®] and Bluetooth[®] compatible cell phone supplied by Customer. ⁶The highway mpg as displayed is based on EPA mileage estimates, sourced from fueleconomy.gov. (MT FWD and CVT FWD, S trim). Actual highway mpg may vary based on options, driving conditions, driving habits and vehicle's condition. ⁷Intelligent Vehicle Stability Program (i-VSP™), which should remain on when driving except when freeing the vehicle from mud or snow, cannot be relied upon to prevent accidents due to abrupt steering, carelessness or dangerous driving techniques. Always drive safely. ⁸Rear sonar parking assist is a convenience feature and is not a substitute for looking to the rear and using rearview mirrors. Drivers should ensure the area is clear when driving in reverse. ⁹Government star ratings are part of the National Highway Traffic Safety Administration's (NHTSA's) New Car Assessment Program (www.safercar.gov). ¹⁰See suzuki.com or your local Dealer for more information on warranty highlights or the New Vehicle Warranty Information booklet for full warranty disclosure. ¹¹Required on AWD models. ¹²Dunlop[®] tires and the associated tire names are registered trademarks of Dunlop[®] Tire and Rubber Corporation. ¹³Akebono[®] is a registered trademark of Akebono Brake Corporation. ¹⁴KYB[®] is a registered trademark of KYB Co. Ltd. ¹⁵Bluetooth[®] is a registered trademark of Bluetooth[®] SIG, Inc. ¹⁶Bluetooth[®] streaming audio not available on navigation equipped models. ¹⁷Rockford Fosgate[®] is a registered trademark of Rockford Corp. ¹⁸Required XM[®] tuner and subscription sold separately. All fees and programming subject to change. Subscriptions subject to customer agreement available at xmradio.com. XM[®] service only available in the 48 contiguous United States. The XM[®] name is a registered trademark of XM[®] Satellite Radio. ¹⁹Head unit sold as an accessory on S manual transmission. ²⁰USB port replaced by iPod compatible cable on navigation equipped models. ²¹iPod[®] is a registered product of Apple, Inc. ²²HomeLink[®] is a registered trademark of Johnson Controls. ²³Bosch[®] is a registered trademark of the Robert Bosch, LLC. ²⁴Only available on GTS and SLS models. ²⁵Based on IHS Global Insight data for Japan sales. ²⁶Based on ALG data as of 7/29/10. Accord[®], Altima[®], Camry[®], Passat CC[®], Mazda6[®], Fusion[®], Porsche[®], Volvo[®] and Mercedes-Benz[®] are registered trademarks. All competitor specifications are obtained from manufacturers' web sites 7/16/10. Color options may vary by trim. Specifications and equipment are based on information available at time of print and subject to change without notice. For more information, contact your local Suzuki Dealer or visit suzuki.com.

SUZUKI FAST FACTS:

MAKER OF THE NUMBER-1-SELLING CAR IN JAPAN SIX YEARS IN A ROW²⁵.

SECOND LARGEST CAR MANUFACTURER IN JAPAN²⁵.

HAS BETTER RESALE VALUE THAN PORSCHE®, VOLVO® AND MERCEDES-BENZ®²⁶.

HIGHEST SATISFACTION OF ANY 2010 CAR. AUTOPACIFIC 2010 VEHICLE SATISFACTION AWARD¹.



KIZASHI



SX4
CROSSOVER



SX4
SPORTBACK



SX4
SPORT



GRAND
VITARA



EQUATOR



SUZUKI

SUZUKIAUTO.COM