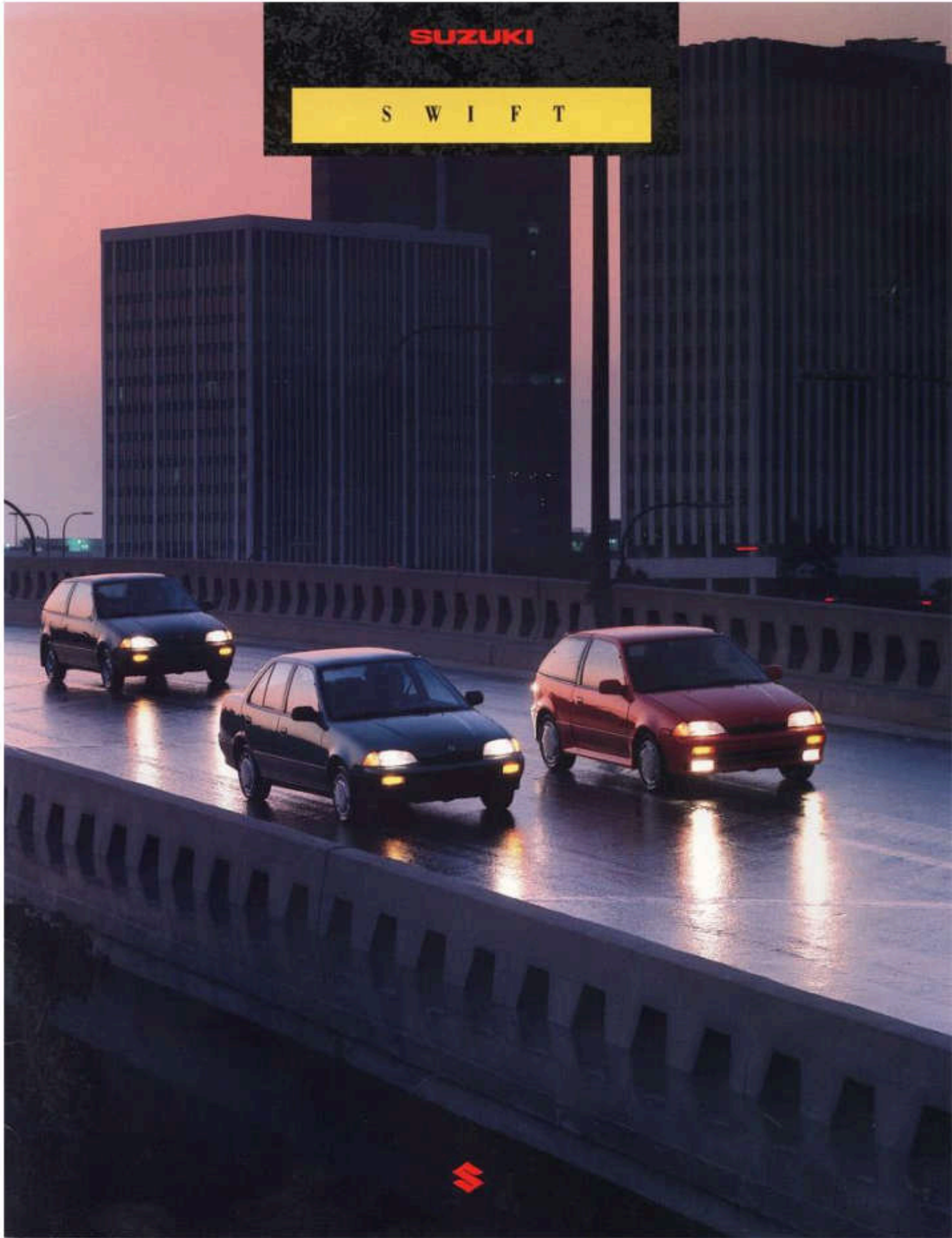
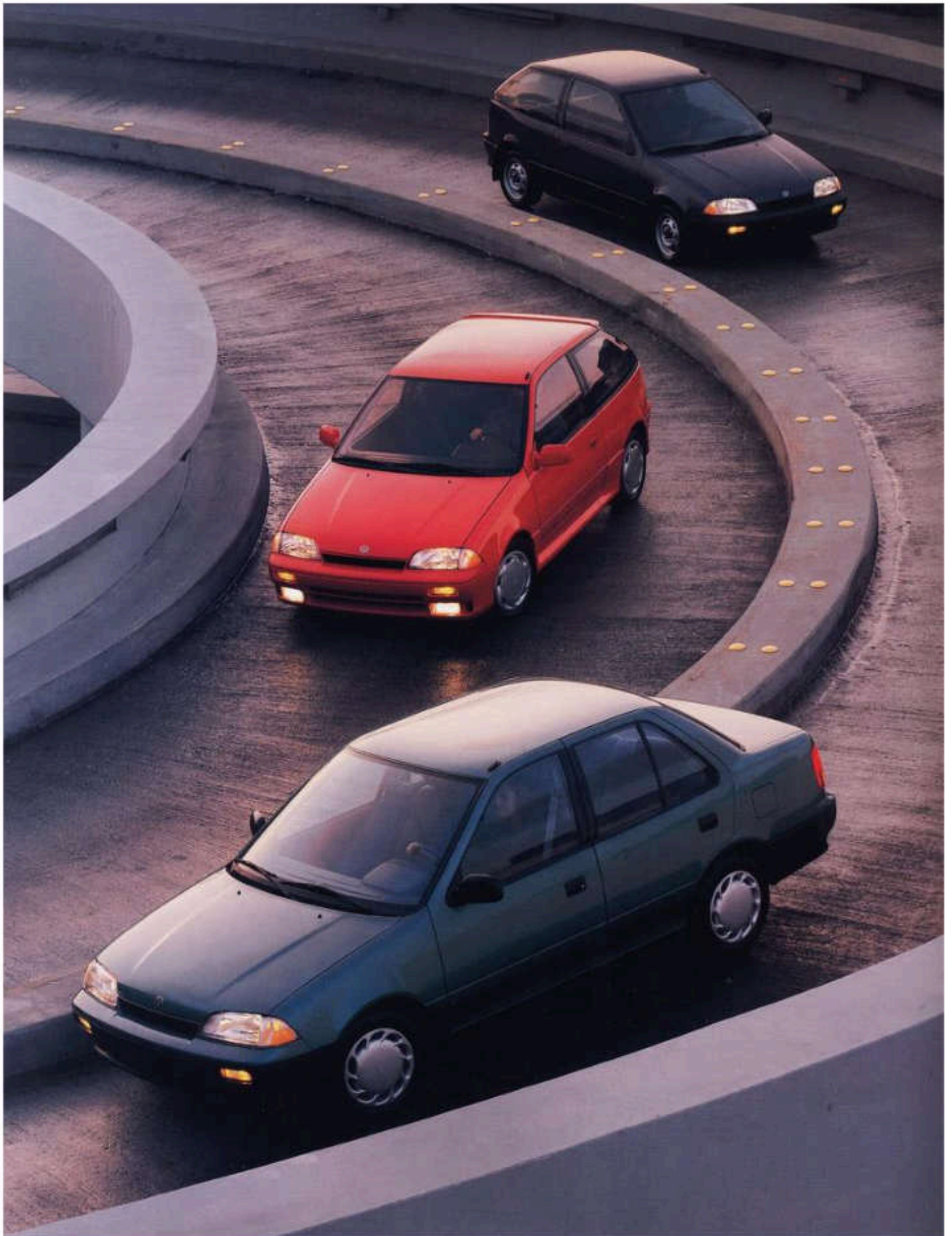


SUZUKI

S W I F T





INTRODUCTION

A

Swift isn't just a name. It's the way it makes you feel.

Right, so no member of the Swift family can file your nails or pop a cork, but they come really close. The broadly talented platform shared by all Swifts is designed to be as versatile as that famous Swiss knife. What we're trying to say here is, no matter what your transportation needs are, there's probably a Swift just for you. If you're the type that sees a twisty road and gets sweaty palms, the GT will probably punch your performance buttons. If you want to get there almost as quickly, but need to take along the family, a 4-Door Sedan will get the job done in style. Finally, there's the GA or GL Hatchback, the perfect economical commuter. And if you're tired of filling up, any Swift is a great cure for gas pains. Commuter, family sedan, or GT machine, Suzuki has a ride for everyone.

*See EPA fuel economy estimates on specifications page.

Some vehicles shown with optional equipment.



Just starting out? You can afford style and performance when you choose a new Swift.



No matter how you see the world, or yourself, Suzuki builds a Swift to suit you.



It's not as quick as a speeding bullet of course, but the Swift offers comparable aerodynamics and much better cornering ability.



Granted, no Swift is as versatile as this. But every one has lots more luggage space and much more comfortable seats.



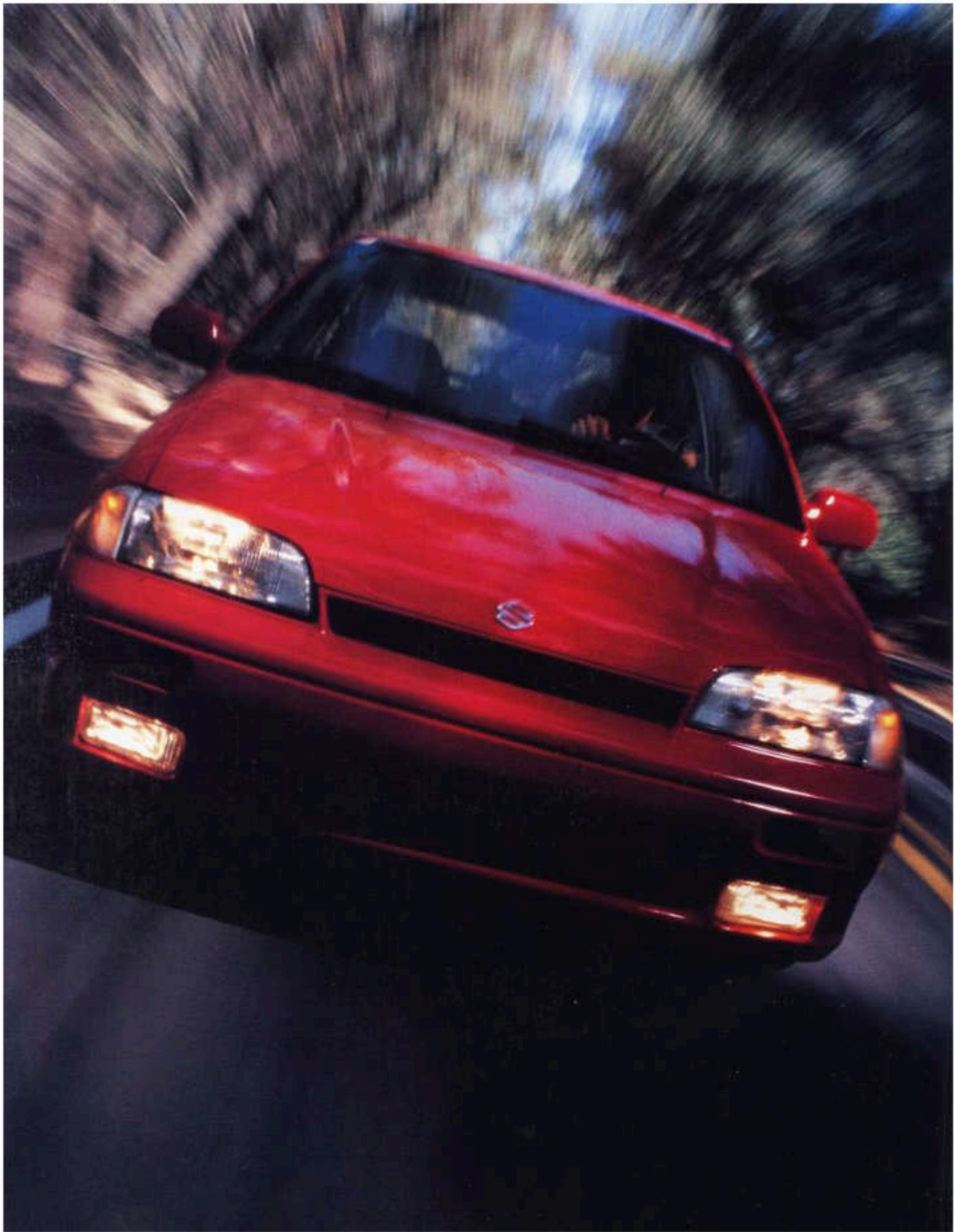
The Swift's performance should come as no surprise. Suzuki has been an innovator in engine efficiency and power output for decades.

Whether you're just cruising around town or going cross-country, a Swift will get you there in style.





Shown with optional equipment.



T

Stopping clocks is one of its specialties.

There's only one legitimate way of measuring the GT's performance. If you haven't already guessed—it's a stopwatch.

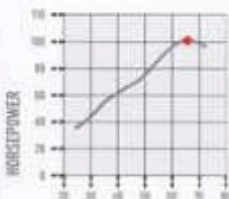
You'd expect a car with GT in its name to offer a potent engine—and with a port-injected, 100 hp, twin-cam, 4-valves-per-cylinder motor, the GT certainly qualifies. But Suzuki believes in balancing the equation by installing standard 4-wheel disc brakes, chunky P175/60R14 tires, and a 4-wheel independent suspension calibrated to slice through corners with scalpel-like precision. In addition, you'll find rack-and-pinion steering and stabilizer bars. Craming all this technology into a small package wasn't easy. But nothing worthwhile ever comes easy.

* According to a recent Car and Driver test, February, 1995.

Some vehicles shown with optional equipment.



The GT has a face—and a motor, suspension and brakes—that could stop a clock quicker than anything in its class. How about 8.2 seconds to 60 mph?



The engine delivers power and torque in one deliciously smooth, turbine-like flow.

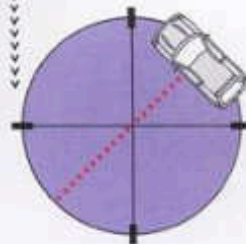


For the cockpit, we're talking all business. You'll find standard sport seats, a thick steering wheel, a slick shifter, and all controls within easy reach.



Take an accelerated course in motivation. With 16 valves and 100 hp, you'll graduate in a heartbeat.

It also looks good going in circles. On the 300-ft. diameter skidpad it generates 0.74 g*.



The GT's aggressive suspension was tuned to work in concert with the beefy P175/60R14 Bridgestone® tires. This is one area where we love to cut corners.



4 · D O O R

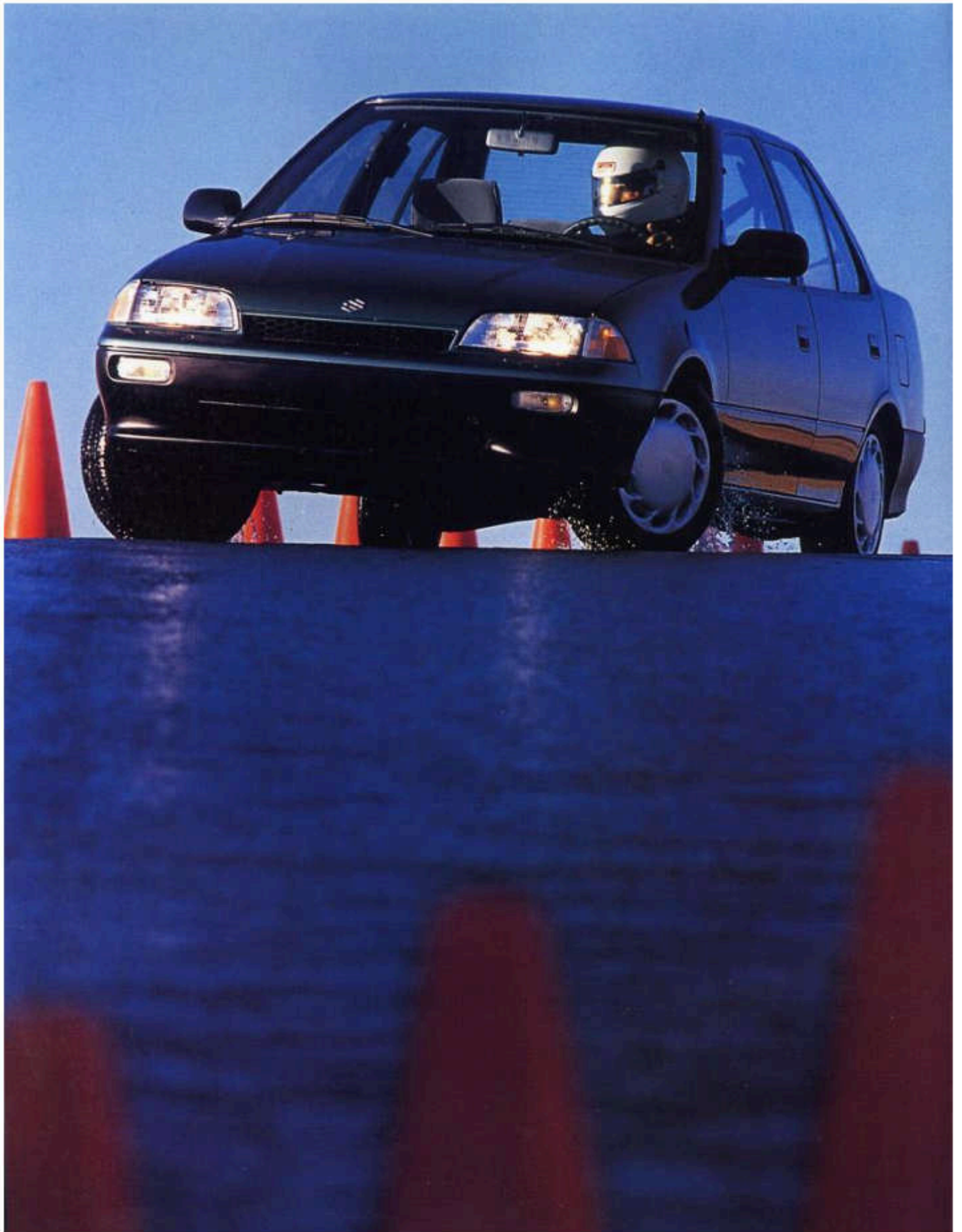
A

**Living proof
that practical
cars need not
be boring.**

ny resem-
blance to the Swift GT is defi-
nitely not a coincidence. Feel
free to consider the family of
Swift Sedans as GTs with
two extra doors.







H A N D L I N G

F

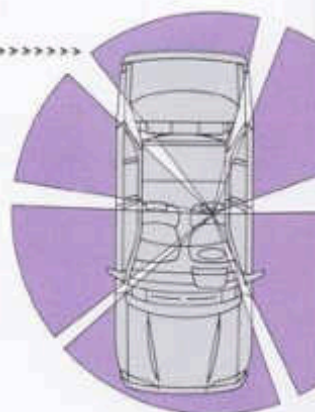
Handling and practicality are not necessarily mutually exclusive features.

antastic looks and a great body are useless without a wonderful suspension system. So rather than two out of three, you'll find all of the above on the full line of Swift 4-Door Sedans. Available in GS, GL and the economical GA equipment levels, these Suzukis offer the kind of suspension that flattens out the bumps, dips and irregular pavement without echoing it into the passenger compartment. Agile handling, precise steering response and excellent balance combine to make all Swifts a pleasure to drive. Although the GT offers that extra added edge for all-out handling, all Swifts share the same basic 4-wheel independent suspension that can tackle the interstates, the pock-marked back streets and just about anything in between.

Some vehicles shown with optional equipment.



Despite its trim dimensions, the Swift offers a large greenhouse which provides excellent visibility out the front, back and sides.



The more the road looks like a snake, the better a Swift feels. Take a drive and you'll be convinced.



Dealing with the ins and outs of heavy traffic is a snap, thanks to the new Sedan's tight, 157 ft. turning radius.



Comfortable, roomy and great looking, the Sedan can tackle just about any road or mission.

With the optional automatic transmission, the Swift will even do your shifting for you.



The 4-door GS Sedan offers these dual power remote-controlled outside mirrors as standard equipment.

P
R
I
M
E
R
S



The passive restraint (air) seat belts have been disconnected to allow interior access. In normal use these belts should be released only in an emergency.

FEAT U R E S

L

Nobody ever said that a practical car has to be equipped like a bread box.

Like the GT's agility, but your kids are starting to look like linebackers? Well the 4-door Swifts are probably the answer to your problem. Sporting a peppy, electronically fuel-injected 4-cylinder engine, they share the GT's basic suspension design. With their ample rear seating and the ease of entry offered by the extra doors, they're the perfect way to put wheels under any family outing. Despite the trim exterior dimensions, Suzuki chassis and structure engineers have carved out a generous cabin with plenty of elbow room for everyone. Not to mention leg and head room. Available with a manual or optional automatic transmission, they offer a host of standard features like dual outside mirrors, a full center console, remote fuel-filler door release and much more. Family planning never looked this good, or drove this well.

Some vehicles shown with optional equipment.



All Swift Sedans have individual fold-down split rear seatbacks to accommodate extra luggage.



Music to soothe the savage commute. The GS Sedan comes standard with four speakers and a Kenwood® AM/FM stereo with cassette.

Style is only part of the GS story. The other parts are comfort and function, with a full complement of interior features.



All 4-Door Sedans offer a whopping 11.5 cu. ft. of trunk space. Additionally, the trunk is fully carpeted.

You'll probably never need these, but critical systems are monitored and potential problems displayed on the instrument panel.



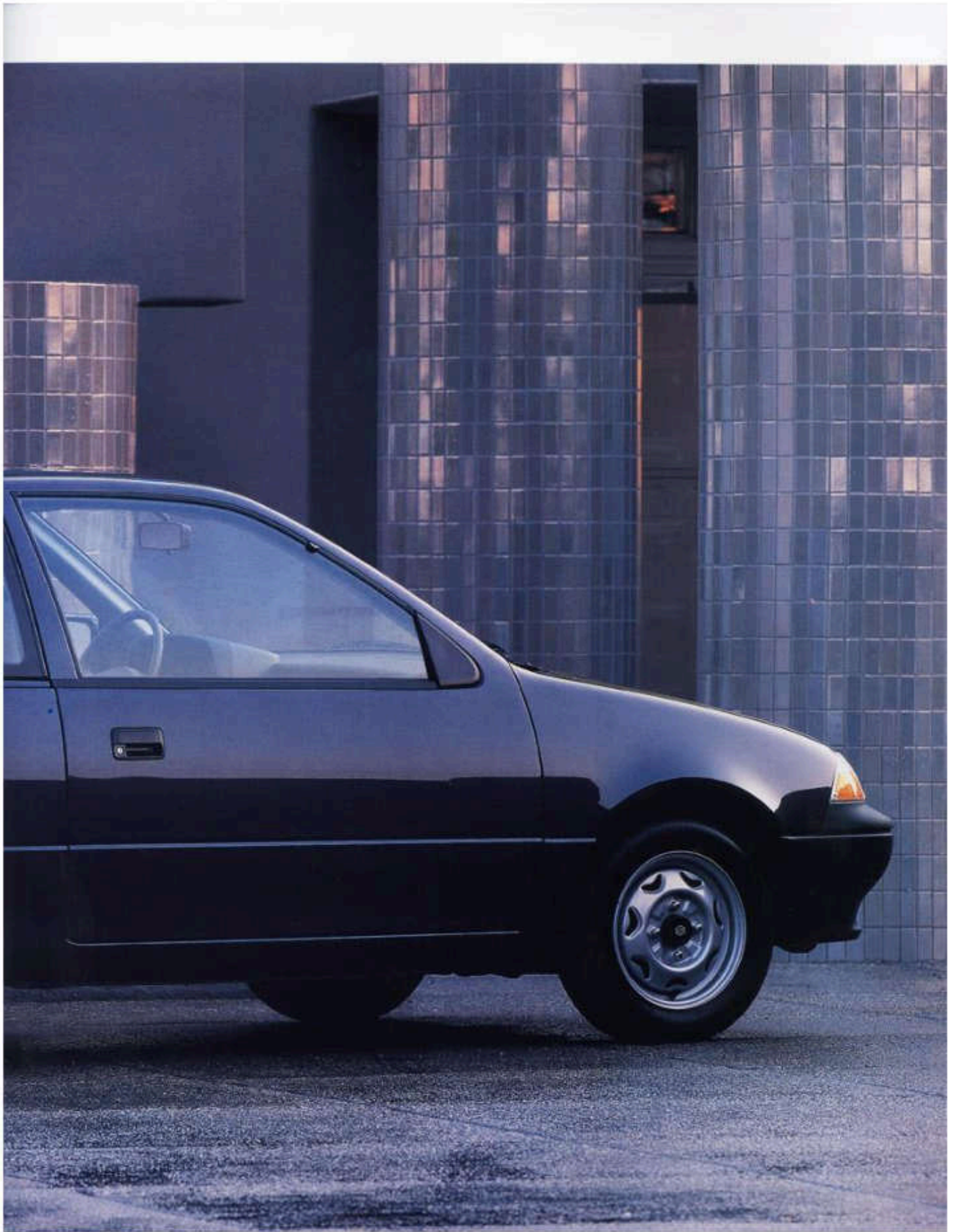
CHECK ENGINE



BRAKE



The Sedan's center console is chock-full of features. The spacious storage compartment holds odds and ends, an integrated drink holder keeps your hands on the wheel, and the change bin helps you feed the meters.





The passive restraint front seat belts have been disconnected to show interior features. In normal use these belts should be released only in an emergency.

S P E C I F I C A T I O N S

S

Standard Equipment

Optional Equipment

Accessory Equipment

Suzuki firmly adheres to the theory that high quality does not necessarily equate to a high price. Test drive a Suzuki and you'll feel the quality built into our entire line.



Swift GT Hatchback



Swift GS, GL, GA Sedans



Swift GL, GA Hatchbacks

	4-Door Sedan			3-Door Hatchback		
	GS	GL	GA	GT	GL	GA

> Mechanical Features

1.3 liter 4-cylinder DOHC 16 valve engine						
1.3-liter 4-cylinder SOHC engine						
Electronic fuel injection				1		
5-speed manual overdrive transmission						
3-speed automatic transmission						
Rack-and-pinion steering						
4-wheel independent suspension						
Power-assisted brakes (ft. ventilated disc/ drum)				2		

> Exterior Features

Stylish steel wheels with center caps	3	3		3	3	
Full aerodynamic wheel covers						
Dark Bronze aluminum alloy wheels						
Aluminum alloy wheel lock set						
Steel-belted radial tires						
Color-keyed front and rear bumpers		4				
Integrated halogen headlamps				5		
Semi-concealed windshield wipers/washers						
Dual power remote-controlled outside mirrors	6	7		6		
Color-keyed front air dam, side skirts and rear hatch spoiler						
Tinted glass						
Swing out type rear quarter windows						
Front mudflaps						
Rear mudflaps						
Pop-up sunroof						
Electric rear window wiper/washer						
Car cover with storage bag						
Car cover cable and lock						

> Interior Features

Speedometer, coolant temperature and fuel level gauges, low fuel level warning light						
Tachometer						
Tripmeter						
Intermittent windshield wipers/washers			8		8	
Electronic tuning AM/FM stereo radio with auto-rew. cassette, 4 speakers & digital clock						
Power-assisted bi-level ventilation system						
Air conditioning						
Cigarette lighter						
Day/night rearview mirror						
Spot maplight						
Interior courtesy light						
Electric rear window defogger						
Side window demisters						
Passenger-side assist grip						
Reclining frt. bucket seats w/adj. head restraints				9		9
Cloth seat trim						
Vinyl seat trim with cloth inserts						
Dual front door map pockets		10			10	
Fold-down split rear seatbacks						11
Passenger-side dbl. action seat release						
Front passive 3-point seatbelts						
Manual 3-point rear seatbelts						
Remote fuel filler door & rear hatch releases		12			12	
Full carpeting	13	13	13	13	13	14
Carpeted floor mats						
Center console						
Removable rear cargo area cover/shelf						
Rear trunk courtesy light						

1 Multi-point fuel injection.

2 4-wheel ventilated discs.

3 Without center caps.

4 Partially color-keyed.

5 Includes halogen fog lamps.

6 Color-keyed.

7 Without power remote control.

8 Mist cycle wipers.

9 Integrated head restraints.

IMPORTANT
 All information in this brochure is based on selected USA models. FEATURES, SPECIFICATIONS AND ACCESSORIES DESCRIBED IN THE BROCHURE MAY NOT BE AVAILABLE IN THE STATE OF HAWAII. See your Suzuki Dealer for details.

4-Door Sedan			3-Door Hatchback		
GS	GL	GA	GT	GL	G

> Engine

Engine type	In-line 4-cylinder SOHC—GS, GL, GA In-line 4-cylinder DOHC 16-valve—GT
Displacement	1298cc (79.2 cu. in.)
Horsepower (SAE net)	70 hp @ 6000 rpm—GS, GL, GA 100 hp @ 6500 rpm—GT
Torque (SAE net)	74 ft.-lbs. @ 3500 rpm—GS, GL, GA 83 ft.-lbs. @ 5000 rpm—GT
Induction system	Single-point electronic fuel injection—GS, GL, GA Multi-point electronic fuel injection—GT
Compression ratio (1:1)	9.5 9.5 9.5 10.0 9.5 9.5

> Drivetrain

Transmission type	5-speed manual overdrive—GS, GL, GA, GT 3-speed automatic (Optional)—GS, GL Sedans
Clutch type	Dry, single disc—GS, GL, GA, GT Torque converter (Optional)—GS, GL Sedans
Gear ratios (1:1)	5 spd. man. 3 spd. auto. 5 spd. man.
	1st 3.416 2.810 3.416
	2nd 1.894 1.549 1.894
	3rd 1.280 1.000 1.280
	4th 0.914 — 0.914
	5th 0.757 — 0.757
Reverse	3.272 2.296 3.272
Final drive ratio (1:1)	3.523 3.684 4.105 3.523

> Chassis/Suspension

Body design	Welded, unitized construction					
Steering type	Rock-and-pinion					
Suspension	Front/Rear	Independent, MacPherson struts and front stabilizer bar (with rear stabilizer bar on GT Hatchback)				
Brakes	Power-assisted (front ventilated disc/rear drum)—GS, GL, GA Power-assisted 4-wheel discs (front ventilated)—GT					
Turning circle diameter, curb to curb (ft.)	31.4	31.4	31.4	30.2	30.2	30.2
Wheels	Type	Styled-steel				
	Size	4.5" J x 13"—GS, GL, GA, 50" J x 14"—GT				
Tires	Type	Steel-belted radial blackwalls				
	Size	P155/70R13—GS, GL, GA, P175/60R14—GT				

> Exterior Dimensions (in.)

Wheelbase	93.1	93.1	93.1	89.2	89.2	89.2
Overall length	160.4	160.4	160.4	146.1	146.1	146.1
Overall width	63.0	63.0	63.0	62.4	62.0	62.0
Overall height	54.3	54.3	54.3	53.1	53.1	53.1
Tread width	Front/Rear	53.7/52.8				

> Interior Dimensions (in.)

Head room	Front/Rear	39.1/37.4	37.8/36.5
Leg Room	Front/Rear	42.5/32.0	42.5/29.8
Shoulder room	Front/Rear	51.4/50.4	51.6/50.5

> Capacities

Seating capacity	4
Luggage capacity, rear seatback up (cu. ft.)	11.5 10.4
Cargo capacity, rear seatback down (cu. ft.)	29.6
Fuel tank (gals.)	10.6

> Weights (lbs.)

Curb weight	5-speed	1848	1848	1848	1870	1716	1716
	3-speed automatic	1892	1892	—	—	—	—
Gross vehicle weight rating		2625	2625	2625	2623	2513	2513

> EPA Fuel Economy Estimates

5-speed manual	Estimated city MPG	40	40	40	29	40	40
	Estimated highway MPG	44	44	44	36	44	44
3-speed automatic	Estimated city MPG	30	30	—	—	—	—
	Estimated highway MPG	33	33	—	—	—	—

11 Driver side only
 12 Single rear seatback
 13 Without fuel filler door release

14 Including trunk/cargo area
 15 Weighted in trunk/cargo area

Exterior Colors



>>> Flash Red



>>> Polar White



>>> Midnight Black Metallic



>>> Twilight Blue Metallic



>>> Slate Gray Metallic



>>> Red Pearl



>>> Lucerne Metallic

Interior Colors

> Black: GT Hatchback
 Gray: GL, GA Hatchbacks

> Black: GT Hatchback
 Gray: GS, GL and GA

> Black: GT Hatchback
 Gray: GS, GL and GA

> Gray: GS, GL and GA

> Gray: GS, GL and GA

> Gray: GS, GL, GA Sedans

> Gray: GS, GL, GA Sedans

All vehicles contained in this brochure feature a passive restraint seat belt system which should remain connected at all times. For purposes of photography and displaying the interior features, some seat belts have been disconnected.

Specifications and equipment based on information available at time of printing and subject to change without notice. Some vehicles shown with optional equipment; see Specifications charts. For more details on 1990 options, accessories and specifications in your area, contact your local Suzuki dealer.

**DRIVE RESPONSIBLY. BUCKLE UP FOR SAFETY
 DON'T DRINK AND DRIVE**



Not only do the 1990 Suzukis look good on the pages of this brochure, as well as out on the open road, they look pretty impressive in type, too. As proof, take a look at our vehicle warranties.

The highly comprehensive basic new vehicle limited warranty is good for up to 24 months/ 24,000 miles, covers most major components, and requires no deductible or transfer fee.

If, however, you're looking for still greater protection, we're pleased to offer the Suzuki Satisfaction System. This extended service agreement program offers a choice of benefits and coverage plans, and can extend your protection for up to 5 years/70,000 miles. For complete details on each of these programs, see your Suzuki dealer.



American Suzuki
Motor Corporation
3201 East Imperial Highway
Irvine, California 92614-6722

Fix a Good Time Call:
1-800-447-4700