



2024



TOYOTA

GR86



Tuned to thrill.

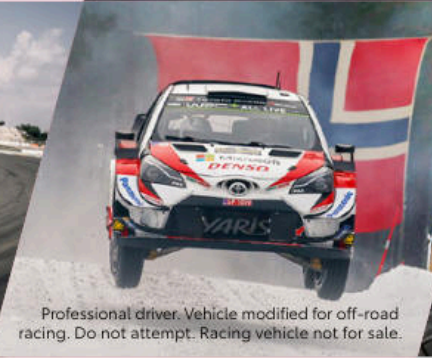
Raise your adrenaline with every rev while behind the wheel of GR86. As the 2.4L boxer engine roars to life, it unleashes an impressive 228 hp¹ and 184 lb.-ft. of torque that whisk you away at every turn. Feel GR86's track-tuned suspension as you come around each bend with buttery-smooth motion, whether you're on a racetrack or your favorite twisty road.



GR86 Premium shown in Halo.²

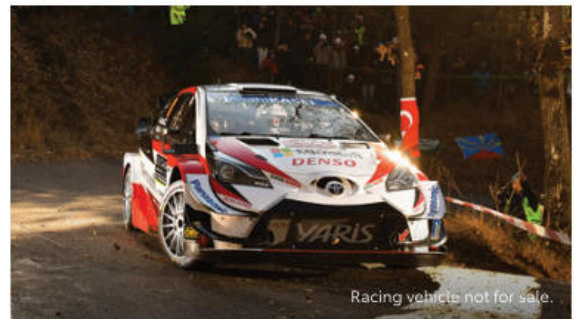


See numbered footnotes in Disclosures section.



Born on the track. Bred for the streets.

Passion fuels innovation, and it's our passion for motorsports that fuels Gazoo Racing (GR), Toyota's global racing division. Racing gives us the opportunity to challenge ourselves — to push the limits and create better cars. Collectively, we grow through every turn of the wrench and every turn of the wheel. This dedication led us to develop GR86, making racing-inspired sports cars accessible to the everyday driver and bringing the excitement of motorsports to the streets.



Motorsports DNA

Gazoo Racing started with our unrelenting passion for motorsports, and led to high-performance road cars with the DNA of motorsports. With heavy involvement from professional drivers and a track-proven formula for optimal engineering, the GR series was designed to leave a lasting impression.



Track-tested

Fine-tuned by track-proven drivers and master drivers like Akio Toyoda himself, every vehicle that's earned the GR badge has been thoroughly pushed, honed and perfected through extensive testing at racetracks across the globe.



TRUENO EDITION

A look that delivers.

GR86 TRUENO Edition is ready to bring modern performance to a true classic. SACHS^{®3} dampers and Brembo^{®4} brakes help upgrade the drive, while inside, Ultrasuede[®]-trimmed⁵ sport seats with red leather-trimmed accents enhance its sporty DNA. Available in a Manual or Automatic Transmission and limited to 860 units in the U.S. for the 2024 market, this edition won't be available for long.



18-in. alloy wheels with dark metallic finish

Stand out when you pull up with 18-in. alloy wheels in a black metallic finish, and maintain control on the road with Michelin[®] Pilot[®] Sport 4 tires⁶ that grip the road in wet or dry conditions.

Eye-catching exterior

Modern style with a retro vibe gives the GR86 TRUENO Edition's exterior a unique look. Start with a Halo or Track bRED exterior color, and give it a two-tone treatment. A black hood, TRUENO badging, black stripes on the side, black door handles, black side mirrors and black duckbill spoiler all come together to finish off this iconic design.



See numbered footnotes in Disclosures section.



GR86 Premium shown in both Halo¹ and Track bRED²



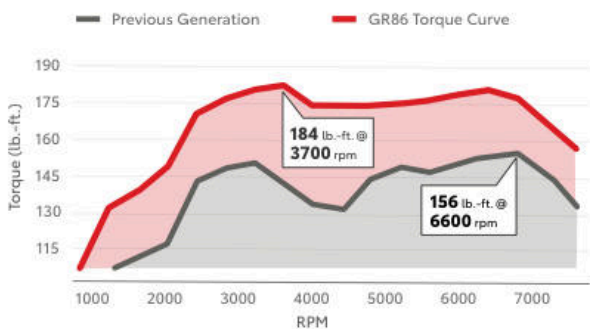
2.4L 4-cylinder boxer engine

A 2.4L flat-four boxer engine that pumps out 228 horsepower is impressive enough, but because it sits low in the chassis, the center of gravity is optimized to help GR86 carve those corners.

PERFORMANCE

Stay ahead of the curve.

GR86 pushes you to outperform normal. Its front-engine, Rear-Wheel Drive (RWD) layout propels you forward with impressive acceleration and provides you with a balanced drive through twists and turns. Along with a lightweight body, these GR86 features add excitement, encouraging you to drive like the pros.



Optimized torque curve

Born to take on the track, GR86's optimized torque curve keeps the G-forces on tap as you accelerate. This provides more usable power in the lower rpm range as you reach 184 lb.-ft. of peak torque, keeping you planted in your seat.



6-speed Manual or Automatic Transmission

Choose your thrill. Whether you're rowing through the gears of a 6-speed close-ratio Manual with a short-throw shifter or triggering the paddle shifters of the 6-speed Automatic with Dynamic Rev Management, GR86 will always be ready for your next move.



Track Mode

Turn on the new Track Mode to change the tach's display and bring important info like rpm and gear into focus. Vehicle Stability Control (VSC)⁷ is also dialed back to help you reach the limits of grip, while Full-Off Mode prevents VSC from kicking in, putting you in full control.

⁷ See numbered footnotes in Disclosures section.



GR86 Premium shown in Track bRED! Visual effects depicting a professional driver on a closed course with stability control off. Do not attempt.

HANDLING

Blow everyone away.

GR86 is about the connection between you and the road. Its lightweight body and low center of gravity give you the agility to handle twists and turns, while its available 18-in. matte-black-painted alloy wheels with Michelin® Pilot® Sport 4 tires⁶ provide a tighter grip on the road.

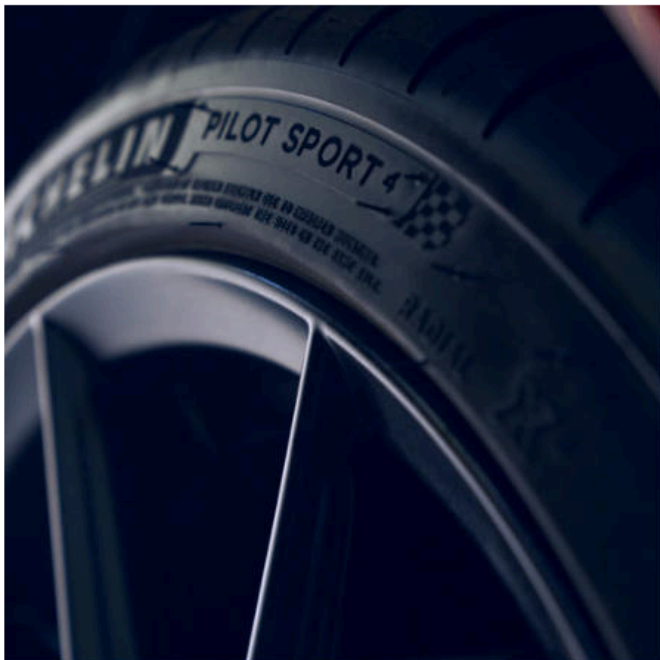


Visual effects depicting a professional driver on a closed course with stability control off. Do not attempt.



Front fender air vents

The aggressive front fenders with functional air vents help channel air around the car, for more driving stability and turning performance.



Track-tuned suspension and limited-slip differential

GR86's multi-link rear suspension and stabilizer bars allow smooth wheel travel to help sharpen turns and enhance grip over uneven surfaces. During low-traction situations, a Torsen® limited-slip differential (LSD) helps improve low-end acceleration by automatically distributing power to the wheel that needs it.

See numbered footnotes in Disclosures section.

Up to speed with the latest tech.



GR86 Premium interior shown in Alcantara[®] and Black leather trim. Apple CarPlay[®] compatibility shown. Screen depiction accurate at time of posting.

8-in. display screen with Android Auto™ and Apple CarPlay® compatibility

Inside, GR86's 8-in. touchscreen comes standard with Android Auto™⁹ and Apple CarPlay®¹⁰ compatibility, which helps you stay seamlessly connected to your world while on the go. Get directions, have your messages read aloud to you, and text back by voice, all while keeping your hands on the wheel.



Digital gauge cluster

Get all the vital info you need at a glance. From the moment you power it up, GR86's fully digital instrument display welcomes you with a reminder of the FA24 boxer engine inside. The configurable 3-mode gauge cluster display allows you to toggle between Normal, Sport or Track Modes, and change the way the tachometer animates.



Simulation shown with available 10-in. powered subwoofer accessory.

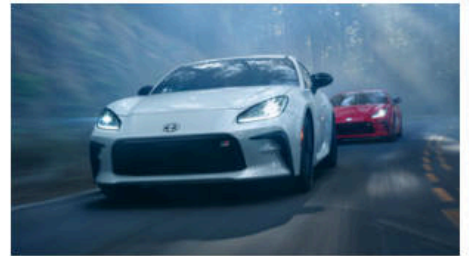
Available eight speakers

Just like the engineering under the hood, GR86's speaker system is designed to amplify every drive. Cleaner, crisper and more dynamic, its available 8-speaker sound system delivers enhanced sound quality, while an available 10-in. powered subwoofer is ready to add more bass to your playlist.

SAFETY

Peace of mind for the road ahead.

It's not just the performance that's advanced. GR86 is available with some of the latest safety technologies to help keep you safe from start to finish.



GR86 Active Safety Suite

GR86 comes standard with a number of intelligent safety features,¹² including a Pre-Collision Braking System (PCBS),¹³ Pre-Collision Throttle Management, Adaptive Cruise Control (ACC) with Lead Vehicle Start Alert, Lane Departure Warning with Sway Warning,¹⁵ and Automatic High Beams.¹⁶

Blind Spot Detection and Rear Parking Sonar

The available Blind Spot Detection (BSD)¹⁷ warns you when a vehicle in the next lane enters GR86's blind spot. And when you're in reverse, available Rear Parking Sonar with Reverse Automatic Braking^{18, 19} uses sensors on the rear bumper to detect obstructions behind the vehicle. If detected, the system can alert the driver with warning sounds and automatically apply the brakes to avoid a collision or reduce collision damage.

LED lighting with Adaptive Front-Lighting System

The eye-catching headlights on GR86 feature LED Daytime Running Lights (DRL) and an available Adaptive Front-Lighting System (AFS). At night, the AFS headlights turn alongside the front wheels, helping you see better around the next corner.



Seven airbags

With safety as a top priority, GR86 comes standard with a driver and front passenger Advanced Airbag System:²¹ front seat-mounted side airbags, side curtain airbags, and driver's knee airbags.

No cost maintenance plan and Roadside Assistance

Every new GR86 comes with ToyotaCare,²² a maintenance plan that covers normal factory scheduled service for 2 years or 25,000 miles, whichever comes first, and 24-hour Roadside Assistance for 2 years, unlimited mileage.

GR86 MODELS



GR86

Mechanical/Performance

- ✓ FA24 2.4L naturally aspirated, horizontally opposed 4-cylinder boxer-four
- ✓ 228 hp¹ @ 7000 rpm; 184 lb.-ft. of torque @ 3700 rpm
- ✓ Short-throw 6-speed close-ratio Manual Transmission or 6-speed Electronically Controlled automatic Transmission (ECT) with paddle shifters
- ✓ Torsen[®] limited-slip differential
- ✓ GR circuit-tuned coil springs, shock absorbers, iron front knuckles, and rear suspension-member-mounted stabilizer bar

Exterior Features

- ✓ 17-in. machined-finish alloy wheels
- ✓ Auto-leveling dual LED headlights and turn signal indicators, Daytime Running Lights (DRL) and LED rear combination lights with rear decklid-mounted LED stop light and backup light
- ✓ Black heated power outside mirrors
- ✓ Dual chrome-tipped exhaust
- ✓ Black functional matrix front grille with G-mesh insert, GR badge and functional air inlet ducts with black accent trim
- ✓ Color-keyed roof with double bubble feature
- ✓ Functional black front-wheel-arch air outlet vent

Interior Features

- ✓ Sport front bucket seats with black side bolsters and seat insert fabric with G-embossed design; 6-way adjustable driver's seat; 4-way adjustable front passenger seat
- ✓ GR digital gauge cluster with Normal/Sport/Track Modes
- ✓ Dual zone automatic climate control
- ✓ Multi-function in-key remote keyless entry system with lock, unlock and panic functions; trunk-release functions; and GR Push Button Start
- ✓ Leather-wrapped parking brake handle cover with contrast stitching
- ✓ Leather gearshift boot with silver contrast stitching
- ✓ GR leather-trimmed tilt/telescopic steering wheel with contrast stitching and audio controls

Safety and Convenience Features

- ✓ GR86 Active Safety Suite¹² — includes Pre-Collision Braking System (PCBS),¹³ Pre-Collision Throttle Management, Adaptive Cruise Control with Lead Vehicle Start Alert, Lane Departure Warning with Sway Warning,¹⁵ and Automatic High Beams¹⁶
- ✓ Rear Parking Sonar with Reverse Automatic Braking^{18, 19} (Automatic Transmission only)

Audio Multimedia

- ✓ GR86 Audio — includes 8-in. touchscreen, six speakers including amplifier, Apple CarPlay^{®10} & Android Auto^{™9} compatibility, SiriusXM[®] 3-month trial subscription.²⁴ See toyota.com/audio-multimedia for details.
- ✓ Connected Services²⁵ with Safety Connect[®] with 1-year trial²⁶
- ✓ Service Connect with 1-year trial²⁷
- ✓ Remote Connect with 1-year trial²⁸



GR86 Premium

Adds to or replaces features offered on GR86

Mechanical/Performance

- ✓ FA24 2.4L naturally aspirated, horizontally opposed 4-cylinder boxer-four
- ✓ 228 hp¹ @ 7000 rpm; 184 lb.-ft. of torque @ 3700 rpm
- ✓ Short-throw 6-speed close-ratio Manual Transmission or 6-speed Electronically Controlled automatic Transmission (ECT) with paddle shifters
- ✓ Torsen[®] limited-slip differential
- ✓ GR circuit-tuned coil springs, shock absorbers, iron front knuckles, and rear suspension-member-mounted stabilizer bar

Exterior Features

- ✓ 18-in. matte-black-painted alloy wheels with Michelin[®] Pilot[®] Sport 4 tires⁵
- ✓ Color-keyed duckbill rear spoiler
- ✓ Adaptive Front-Lighting System (AFS)

Interior Features

- ✓ Two-stage heated sport seats with leather-trimmed bolsters and Ultrasuede[®]-trimmed² inserts; 6-way adjustable driver's seat with seatback pocket; 4-way adjustable front passenger seat with seatback pocket
- ✓ Aluminum sport pedals and footrest

Safety and Convenience Features

- ✓ GR86 Active Safety Suite¹² — includes Pre-Collision Braking System (PCBS),¹³ Pre-Collision Throttle Management, Adaptive Cruise Control with Lead Vehicle Start Alert, Lane Departure Warning with Sway Warning,¹⁵ and Automatic High Beams¹⁶
- ✓ Rear Parking Sonar with Reverse Automatic Braking^{18, 19}
- ✓ Blind Spot Detection (BSD)¹⁷ with Rear Cross-Traffic Alert (RCTA)^{18, 19}

Audio Multimedia

- ✓ GR86 Audio — includes 8-in. touchscreen, eight speakers including amplifier, Apple CarPlay^{®10} & Android Auto^{™9} compatibility, SiriusXM[®] 3-month trial subscription.²⁴ See toyota.com/audio-multimedia for details.
- ✓ Connected Services²⁵ with Safety Connect[®] with 1-year trial²⁶
- ✓ Service Connect with 1-year trial²⁷
- ✓ Remote Connect with 1-year trial²⁸



GR86 TRUENO Edition

Adds to or replaces features offered on GR86 Premium

Mechanical/Performance

- ✓ FA24 2.4L naturally aspirated, horizontally opposed 4-cylinder boxer-four
- ✓ 228 hp¹ @ 7000 rpm; 184 lb.-ft. of torque @ 3700 rpm
- ✓ Short-throw 6-speed close-ratio Manual Transmission
- ✓ 6-speed Electronically Controlled automatic Transmission (ECT) with paddle shifters
- ✓ Torsen[®] limited-slip differential
- ✓ MacPherson strut front suspension and multi-link rear suspension with SACHS^{®3} dampers
- ✓ Brembo^{®4} 4-piston front disc brakes with 12.8-in. ventilated rotors; Brembo^{®4} 2-piston rear disc brakes with 12.4-in. solid rotors

Exterior Features

- ✓ 18-in. black-metallic-painted alloy wheels with Michelin[®] Pilot[®] Sport 4 tires⁵
- ✓ Gloss-black duckbill rear spoiler with LED center high-mount stop light
- ✓ AE86-inspired two-tone black hood and side panel graphic
- ✓ Front and rear TRUENO badging

Interior Features

- ✓ GR86 Audio — includes 8-in. touchscreen, eight speakers, Apple CarPlay^{®10} & Android Auto^{™9} compatibility, SiriusXM[®] 3-month trial subscription.²⁴ See toyota.com/audio-multimedia for details.
- ✓ Connected Services²⁵ with Safety Connect[®] with 1-year trial²⁶
- ✓ Leather-trimmed gearshift boot with red contrast stitching
- ✓ GR leather-trimmed manual tilt/telescopic 3-spoke sport steering wheel with red contrast stitching, audio, Multi-Information Display (MID), Adaptive Cruise Control button, and paddle shifters (Automatic Transmission)
- ✓ Leather-trimmed 6-MT TRUENO shift lever and knob
- ✓ Leather-trimmed 6-AT TRUENO shift lever and knob
- ✓ Hand-lever parking brake with leather-trimmed handle cover and red contrast stitching
- ✓ Two-stage heated sport seats with red leather-trimmed bolsters, Ultrasuede[®]-trimmed² inserts, red seat stripe and contrast stitching; 6-way adjustable driver's seat with seatback pocket; 4-way adjustable front passenger seat with seatback pocket
- ✓ GR86 TRUENO Edition limited-production commemorative plaque
- ✓ GR leather-trimmed manual tilt/telescopic 3-spoke sport steering wheel with red contrast stitching, audio, Multi-Information Display (MID), and Adaptive Cruise Control button (Manual Transmission)
- ✓ Red contrast-stitched armrests with red leather door panel insert
- ✓ TRUENO Edition all-weather floor mats³⁰ and cargo mat

*4G network dependent. See numbered footnotes in Disclosures section.

GR86 COLORS & TRIMS*

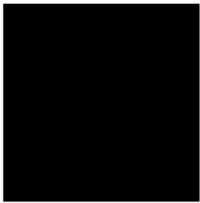
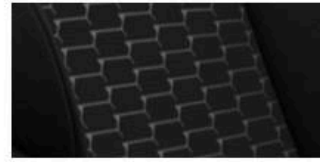


Track bRED²

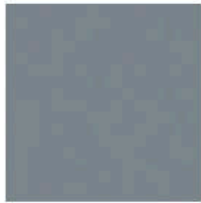


Halo²

Black fabric

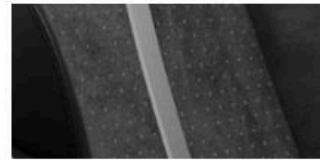


Raven



Pavement

Black Ultrasuede®5 with leather trim

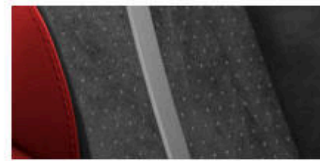


Steel



Trueno Blue

Black Ultrasuede®5 with Red leather trim



Neptune 2.0

GR86 WHEELS



17-in. machined-finish alloy wheel for GR86



18-in. matte-black-painted alloy wheel for GR86 Premium



18-in. black-metallic-painted alloy wheel for GR86 TRUENO Edition

*Not all colors and trims available on all model grades. See dealer for details. See numbered footnotes in Disclosures section.

GR86 ACCESSORIES

A wide range of Genuine Toyota Accessories is available to help make driving your GR86 even more fun. Now your GR86 can reflect your personal style. There's something for everyone. Some accessories may not be available in all regions of the country. For a complete list of accessories, go to toyota.com/gr86.



17-in. GR forged alloy wheels — bronze-colored



10-in. powered subwoofer



Door edge guards



Emergency assistance kit



First aid kit with PPE



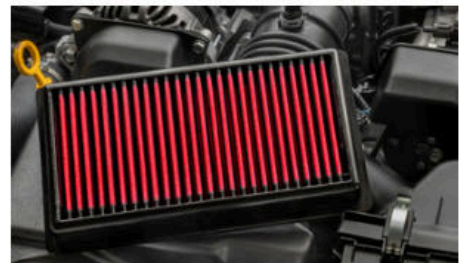
Frameless HomeLink^{®31} mirror



Paint protection kit³²



Cargo net



GR air filter



GR air intake system



GR performance dual exhaust — chrome



Mudguards

WARRANTIES

Every Toyota Car, Truck and SUV is built to exceptional standards. And that's not idle boasting. We back it up with these Limited Warranty Coverages:

Basic: 36 months/36,000 miles (all components other than normal wear and maintenance items).

Powertrain: 60 months/60,000 miles (engine, transmission/transaxle, drive system, seatbelts and airbags).

Rust-Through: 60 months/unlimited miles (corrosion perforation of sheet metal).

Emissions: Coverages vary under Federal and California regulations. Refer to applicable *Warranty and Maintenance Guide* for details.

Accessories: For Genuine Toyota Accessories purchased at the time of the new vehicle purchase, the Toyota Accessory Warranty coverage is in effect for 36 months/36,000 miles from the vehicle's in-service date, which is the same coverage as the Toyota New Vehicle Limited Warranty.

For Genuine Toyota Accessories purchased after the new vehicle purchase the coverage is 12 months, regardless of mileage, from the date the accessory was installed on the vehicle, or the remainder of any applicable new vehicle warranty, whichever provides greater coverage.

You may be eligible for transportation assistance if it's necessary that your vehicle be kept overnight for repairs covered under warranty. Please see your authorized Toyota dealership for further details.

For complete details about Toyota's warranties, please visit www.toyota.com, refer to the applicable *Warranty and Maintenance Guide* or see your Toyota dealer.

GR86 FEATURES^{3,3}

S = Standard O = Optional

Exterior

	GR86	GR86 Premium	GR86 TRUENO Edition
17-in. machine-finished alloy wheels	S		
18-in. matte-black-painted alloy wheels with Michelin® Pilot® Sport 4 tires ⁶		S	
18-in. black-metallic-painted alloy wheels with Michelin® Pilot® Sport 4 tires ⁶			S
Color-keyed duckbill rear spoiler		S	
Gloss-black duckbill rear spoiler with LED center high-mount stop light			S
Auto-leveling projector-type headlights and LED turn signal indicators	S		
Auto-leveling projector-type headlights with Adaptive Front-Lighting System (AFS) LED and turn signal indicators		S	S
LED Daytime Running Lights (DRL)	S	S	S
LED rear combination lights (brake and turn signal indicators) with rear decklid-mounted LED stop light and backup light	S	S	S
LED side marker lights	S	S	S
Black heated power outside mirrors	S	S	S
Functional black front-wheel-arch air outlet vent	S	S	S
Black functional matrix front grille with G-mesh insert, GR badge and functional air inlet ducts with black accent trim	S	S	S
Black rear bumper lower valance	S	S	S
Color-keyed roof with double bubble feature	S	S	S
Rear window defogger with timer	S	S	S
Dual chrome-tipped exhaust	S	S	S
Color-keyed roof-mounted shark-fin antenna	S	S	S
Rear GR86 badge	S	S	S
Front and rear TRUENO badging			S
AE86-inspired two-tone black hood and side panel graphic			S
Black door handles			S
Variable intermittent front windshield wipers	S	S	S

Interior

Rearview mirror with manual dim	S	S	S
Dual zone automatic climate control (with individual temperature settings for the driver and front passenger) with dual LCD toggle displays	S	S	S
Power windows with driver and front passenger auto up/down	S	S	S
Multi-function in-key remote keyless entry system with lock, unlock and panic functions; trunk-release functions; and GR Push Button Start	S	S	S
GR engine start/stop button	S	S	S
7-in. Thin-Film Transistor (TFT) GR digital gauge cluster with LCD Multi-Information Display (MID) with Normal, Sport and Track Modes	S	S	S
GR leather-trimmed tilt/telescopic 3-spoke sport steering wheel with contrast stitching; audio and Multi-Information Display (MID) controls (Manual Transmission)	S	S	
GR leather-trimmed tilt/telescopic 3-spoke sport steering wheel with contrast stitching; audio, Multi-Information Display (MID), GR86 Active Safety Suite ¹² controls and paddle shifters (Automatic Transmission)	S	S	
GR leather-trimmed tilt/telescopic 3-spoke sport steering wheel with red contrast stitching; audio, GR86 Active Safety Suite ¹² controls and Multi-Information Display (MID) controls (Manual Transmission)			S
GR leather-trimmed tilt/telescopic 3-spoke sport steering wheel with red contrast stitching; audio, Multi-Information Display (MID), GR86 Active Safety Suite ¹² controls and paddle shifters (Automatic Transmission)			S
Red contrast-stitched armrests with red leather-trimmed door panel insert			S
GR86 TRUENO Edition limited-production commemorative plaque			S
TRUENO Edition all-weather floor mats ³⁰ and cargo mat			S
Hand-lever parking brake with leather-wrapped handle cover and silver contrast stitching	S	S	
Hand-lever parking brake with leather-wrapped handle cover and red contrast stitching			S
Leather gearshift boot with silver contrast stitching	S	S	
Leather gearshift boot with red contrast stitching			S
Leather-wrapped 6-AT shift lever and knob (Automatic Transmission)	S	S	
Leather-wrapped 6-MT shift lever and knob (Manual Transmission)	S	S	
Leather-wrapped 6-AT TRUENO shift lever and knob (Automatic Transmission)			S
Leather-wrapped 6-MT TRUENO shift lever and knob (Manual Transmission)			S
Aluminum sport pedals and footrest		S	S
Sport front bucket seats with black side bolsters and seat insert fabric with G-embossed design; 3-way adjustable driver's seat; 2-way adjustable front passenger seat	S		
Two-stage heated sport seats with leather-trimmed bolsters and Ultrasuede®-trimmed ⁵ inserts; 3-way adjustable driver's seat with seatback pocket; 2-way adjustable front passenger seat with seatback pocket		S	
Two-stage heated sport seats with red leather-trimmed bolsters and Ultrasuede®-trimmed ⁵ inserts, red seat stripe and contrast stitching; 6-way adjustable driver's seat with seatback pocket; 4-way adjustable front passenger seat with seatback pocket			S
One-piece folding rear seatback with fabric trim	S		
One-piece folding rear seatback with Ultrasuede® ³¹ trim		S	S
Dual sun visors with vanity mirrors	S		
Dual sun visors with illuminated vanity mirrors		S	S

GR86 FEATURES^{3,3}

S = Standard O = Optional

Interior (continued)

	GR86	GR86 Premium	GR86 TRUENO Edition
Fixed center console with covered storage compartment with two front cup holders and two USB 2.0 charging ports ¹⁴ with auxiliary port (Manual Transmission)	S	S	S
Fixed center console with one open cup holder, covered storage compartment with two front cup holders and two USB 2.0 charging ports ¹⁴ with auxiliary port (Automatic Transmission)	S	S	S
GR86 Audio — Includes 8-in. touchscreen, six speakers, Android Auto™ ⁹ & Apple CarPlay® ¹⁰ compatibility, SiriusXM® 3-month trial subscription. ²⁴ See toyota.com/audio-multimedia for details.	S		
GR86 Audio — Includes 8-in. touchscreen, eight speakers, Android Auto™ ⁹ & Apple CarPlay® ¹⁰ compatibility, SiriusXM® 3-month trial subscription. ²⁴ See toyota.com/audio-multimedia for details.		S	S
Connected Services™ ²⁵ — Safety Connect® with 1-year trial, ²⁶ Service Connect with 1-year trial, ²⁷ Remote Connect with 1-year trial; ²⁸ 4G network dependent. See toyota.com/connected-services for details.	S	S	S
Two USB 2.0 charging ports ¹⁴ with auxiliary port	S	S	S

Safety and Convenience

Vehicle Stability Control (VSC), ⁷ Traction Control (TRAC), Anti-lock Brake System (ABS), Electronic Brake-force Distribution (EBD) and Brake Assist (BA) ²⁵	S	S	S
GR86 Active Safety Suite ¹² — includes Pre-Collision Braking System (PCBS), ¹³ Pre-Collision Throttle Management, Adaptive Cruise Control (ACC) with Lead Vehicle Start Alert, Lane Departure Warning with Sway Warning, ¹⁵ and Automatic High Beams ¹⁶	S	S	S
Blind Spot Detection (BSD) ¹⁷ with Rear Cross-Traffic Alert (RCTA) ^{18,19}		S	S
Vehicle Stability Control (VSC) ⁷ Track Mode	S	S	S
Backup camera ²⁶ with projected path	S	S	S
Hill Start Assist Control (HAC) ³²	S	S	S
Seven airbags ²¹ — includes driver and front passenger Advanced Airbag System, driver and front passenger outboard seat-mounted side airbags, front and rear side curtain airbags, and driver's knee airbag	S	S	S
Driver and front passenger headrests	S	S	S
Three-point seatbelts for all seating positions; driver-side Emergency Locking Retractor (ELR) and Automatic/Emergency Locking Retractor (ALR/ELR) on all passenger belts	S	S	S
LATCH (Lower Anchors and Tethers for CHILDren) includes lower anchors on outboard rear seats and tether anchors on all rear seats	S	S	S
Tire Pressure Monitor System (TPMS) ¹⁸	S	S	S
Anti-theft system with alarm and engine immobilizer ²³	S	S	S
ToyotaCare ²² featuring a maintenance plan with 24-hour Roadside Assistance	S	S	S

GR86 SPECIFICATIONS

S = Standard O = Optional

Mechanical/Performance

	GR86	GR86 Premium	GR86 TRUENO Edition
ENGINE			
Displacement (cc)	2387	2387	2387
FA24 2.4L naturally aspirated, horizontally opposed 4-cylinder boxer-four engine	S	S	S
Horsepower ¹ (hp @ rpm)	228 @ 7000	228 @ 7000	228 @ 7000
Torque (lb.-ft. @ rpm)	184 @ 3700	184 @ 3700	184 @ 3700
Ignition system — transistorized	S	S	S
Bore x stroke (mm.)	94.0 X 86.0	94.0 X 86.0	94.0 X 86.0
Valvetrain	DOHC 16-valve	DOHC 16-valve	DOHC 16-valve
Compression ratio	12.5:1	12.5:1	12.5:1
Fuel octane rating ¹	93 or more	93 or more	93 or more
Maximum speed ²⁵ (mph) (Manual Transmission)	140	140	140
Maximum speed ²⁵ (mph) (Automatic Transmission)	134	134	134
0-60 mph (seconds) ²⁹ (Manual Transmission)	6.1	6.1	6.1
0-60 mph (seconds) ²⁹ (Automatic Transmission)	6.6	6.6	6.6
TRANSMISSION			
6-speed Manual Transmission (transmission model code: TL70)	S	S	S
6-speed Electronically Controlled automatic Transmission (ECT) with paddle shifters (transmission model code: TX6A)	A	A	A
GEAR RATIO			
Type: 6-speed Manual 1st gear: 3.626, 2nd gear: 2.189, 3rd gear: 1.541, 4th gear: 1.213, 5th gear: 1.000, 6th gear: 0.767, reverse: 3.438	S	S	S
Type: 6-speed Automatic 1st gear: 3.538, 2nd gear: 2.060, 3rd gear: 1.404, 4th gear: 1.000, 5th gear: 0.713, 6th gear: 0.582, reverse: 3.168	S	S	S
FUEL-INJECTION SYSTEM			
Toyota D-4S direct-injection fuel system	S	S	S
DRIVETRAIN			
Front-engine, Rear-Wheel Drive (RWD)	S	S	S
Torsen [®] limited-slip differential (LSD)	S	S	S
AXLE RATIO			
4.100 — Manual Transmission	S	S	S
3.909 — Automatic Transmission	S	S	S
BODY CONSTRUCTION			
Reinforced unibody construction with lightweight, low-center-of-gravity design	S	S	S
Coefficient of drag (Cd)	0.276	0.276	0.276
SUSPENSION			
GR circuit-tuned coil springs, shock absorbers, iron front knuckles, and rear suspension-member-mounted stabilizer bar	S	S	S
MacPherson strut front suspension and multi-link rear suspension	S	S	
MacPherson strut front suspension and multi-link rear suspension with SACHS [®] dampers	O	O	S
Stabilizer bar diameter, front/rear (mm.)	18/15	18/15	18/15

GR86 SPECIFICATIONS

S = Standard O = Optional A = Available

	GR86	GR86 Premium	GR86 TRUENO Edition
STEERING			
GR circuit-tuned Electric Power Steering (EPS); power-assisted rack-and-pinion	S	S	S
Steering wheel turns (lock-to-lock)	2.5	2.5	2.5
Turning circle diameter (ft.)	35.4	35.4	35.4
BRAKES			
Center hand brake	S	S	S
2-piston steel floating-caliper front disc brakes with 11.6-in. (294-mm.) ventilated rotors; 1-piston steel floating-caliper rear disc brakes with 11.4-in. (290-mm.) solid rotors	S	S	
Brembo® 4-piston front disc brakes with 12.8-in. (325-mm.) ventilated rotors; Brembo® 2-piston rear disc brakes with 12.4-in. (315-mm.) solid rotors	O	O	S
Anti-lock Brake System (ABS)	S	S	S

Dimensions

	GR86	GR86 Premium	GR86 TRUENO Edition
EXTERIOR			
Length (mm.)	4265	4265	4265
Width (mm.)	1775	1775	1775
Height (mm.)	1310	1310	1310
Running ground clearance (mm.)	130	130	130
Wheelbase (mm.)	2575	2575	2575
Track (front/rear) (mm.)	1520/1550	1520/1550	1520/1550
Wheel size	17 x 7 1/2 J	18 x 7 1/2 J	18 x 7 1/2 J

Weights and Capacities

Gross Vehicle Weight Rating GVWR (lb.)			
Manual Transmission	3682	3748	3748
Automatic Transmission	3682	3748	3748
Seating capacity	4	4	4
Cargo volume (trunk) (cu. ft.) ²⁰	6.26	6.26	6.26
Fuel capacity (gal.)	13.2	13.2	13.2

Tires

Type	Michelin® Primacy HP summer tires ⁶ (215/45R17)	Performance Michelin® Pilot® Sport 4 summer tires ⁹ (215/40R18)	Performance Michelin® Pilot® Sport 4 summer tires ⁹ (215/40R18)
Spare	Tire repair kit	Tire repair kit	Tire repair kit

Mileage Estimates (mpg city/highway/combined)¹⁴

Manual Transmission	20/26/22	20/26/22	20/26/22
Automatic Transmission	21/30/24	21/30/24	21/30/24

DISCLOSURES

1. Ratings achieved using the required premium unleaded gasoline with an octane rating of 93 or higher. If premium fuel is not used, performance will decrease. If unleaded gasoline with an octane rating of 93 (98 RON) is not available, unleaded gasoline with an octane rating of 91 (95 RON) may be used with no detriment to engine durability or drivability. 2. Extra-cost color. 3. SACHS® is a registered trademark of ZF Friedrichshafen AG. 4. High-friction brakes may require more maintenance, be louder and have a shorter life than conventional brakes, depending on driving conditions. See the *Warranty and Services Guide* for more information. Brembo® is a registered trademark of Freni Brembo SpA. 5. Ultrasuede® is a registered trademark of Toray Industries, Inc. 6. Performance tire life may be substantially less than mileage expectancy, depending on driving conditions. Michelin is a registered trademark of Michelin North America, Inc. 7. Vehicle Stability Control is not a substitute for safe and attentive driving practices. Factors including speed, road conditions, weather and steering input can affect whether VSC will be effective. See *Owner's Manual* for limitations. 8. Torsen® is a registered trademark of Zexel Torsen, Inc. 9. Compatible Android 8.0+ phone, compatible active data plan, and Android Auto app required. Operability depends on network availability, a cellular connection and GPS signal. To use Android Auto on your car display, you'll need an Android phone running Android 8 or higher, an active data plan, and the Android Auto app. Services subject to change at any time without notice. Data charges may apply. To learn more, go to <https://www.toyota.com/audio-multimedia/>. To learn more about Toyota's Connected Services data collection, use, sharing and retention practices, please visit <https://www.toyota.com/support/privacy-notice/>. 10. Requires compatible smartphone. Operability depends on network availability, a cellular connection and GPS signal. Services subject to change at any time without notice. Data charges may apply. To learn more, go to <https://www.toyota.com/connected-services/>. To learn more about Toyota's Connected Services data collection, use, sharing and retention practices, please visit <https://www.toyota.com/support/privacy-notice/>. Apple CarPlay® is a registered trademark of Apple Inc. 11. Alcantara® is a registered trademark of Alcantara S.p.A. 12. GR86 Active Safety Suite effectiveness is dependent on many factors including road, weather and vehicle conditions. Drivers are responsible for their own safe driving. Always pay attention to your surroundings and drive safely. See *Owner's Manual* for limitations. 13. The Pre-Collision Braking System (PCBS) is designed to help avoid or reduce the crash speed and damage in certain frontal collisions only. PCBS is not a substitute for safe and attentive driving. System effectiveness depends on many factors including road, weather and vehicle conditions. Available on vehicles with automatic transmissions only. 14. 2024 projected EPA-estimated mpg rating estimates as determined by manufacturer. EPA estimates not available at time of posting. Use for comparison purposes only. Your mileage will vary for many reasons, including your vehicle's condition and how/where you drive. See www.fueleconomy.gov. 15. Lane Departure Alert with Sway Warning System is designed to read visible lane markers under certain conditions and provide visual/audible alerts when lane departure is detected or when detecting patterns of vehicle movements indicating driver inattentiveness. It is not a collision-avoidance system or substitute for safe and attentive driving. Effectiveness is dependent on many factors including road, weather and vehicle conditions. See *Owner's Manual* for limitations. 16. Automatic High Beams operate at speeds above 21 mph. See *Owner's Manual* for instruction and limitations. 17. Do not rely exclusively on Blind Spot Detection. Look over shoulder and use turn signal. See *Owner's Manual* for limitations. 18. Rear Parking Assist Sonar with Reverse Automatic Braking is designed to warn drivers of potential rear collisions at speeds of 6 mph or less. Certain vehicle and environmental factors, including an object's shape and composition, may affect the ability of the rear parking assist sonar to detect it. Always look around outside the vehicle and use mirrors to confirm clearance. See *Owner's Manual* for additional limitations and details. 19. Available on Automatic Transmission models only. 20. Cargo and load capacity limited by weight and distribution. Always properly secure cargo and cargo area. 21. Airbag systems supplement the seatbelts and are designed to inflate only under certain conditions and in certain types of severe collisions. Always wear seatbelt, sit upright in middle and as far back in seat as possible to help decrease risk of injury. Do not put objects in front of an airbag. See *Owner's Manual* for limitations. 22. ToyotaCare covers normal factory scheduled maintenance for two years or 25,000 miles, whichever comes first, and 24-hour Roadside Assistance is included for two years, unlimited mileage (Note: bZ4X, Mirai, Prius and Prius Prime include enhanced ToyotaCare and/or Roadside Assistance). Roadside Assistance limits towing distances and locations and does not include parts and fluids, except emergency fuel delivery for certain vehicles. Excludes rental company fleet sale vehicles. See your Toyota dealer for additional restrictions and exclusions. Valid only in the continental U.S. 23. The engine immobilizer is a state-of-the-art anti-theft system initiated when the key is inserted into ignition switch or a Smart Key fob is in/near the vehicle. Engine will only start if the code in the transponder chip inside the key/fob matches the code in vehicle's immobilizer. The transponder chip is embedded in the key/fob and can be costly to replace. For lost key or fob, see a Toyota dealer or go to www.aloa.org to find a qualified locksmith for high-security key service. 24. Trial length and service availability may vary by model, model year or trim. Service will automatically stop at the end of your trial subscription period unless you decide to continue service. If you do not wish to enjoy your trial, you can cancel by calling the number below. All SiriusXM services require a subscription, each sold separately by SiriusXM after the trial period. **Service subject to the SiriusXM Customer Agreement and Privacy Policy; visit www.siriusxm.com to see complete terms and how to cancel which includes calling 1-866-635-2349.** Some services and features are subject to device capabilities and location availability. All fees, content and features are subject to change. SiriusXM, Pandora and all related logos are trademarks of Sirius XM Radio Inc. and its respective subsidiaries. 25. Toyota Connected Services depend on certain factors outside of Toyota's control in order to operate, including cellular network availability and GPS signal. Without either of these things, operability may be limited or precluded, including access to response center and emergency support. Services vary by vehicle and are subject to change at any time without notice. Requires app download/registration and subscription after trial (if applicable). Terms of Use apply. Data charges may apply. See *Owner's Manual* and <https://www.toyota.com/connected-services/>. For Toyota's Connected Services' data collection, use, sharing and retention practices, please visit <https://www.toyota.com/support/privacy-notice/>. All trials begin on original purchase or lease date of new vehicle. Paid subscription required after trial (if applicable). 26. Safety Connect® depends on factors outside of Toyota's control in order to operate, including cellular network availability and GPS signal. Without either of these things, operability may be limited or precluded, including access to response center and emergency support. Stolen vehicle police report required to use Stolen Vehicle Locator. If subscription includes Automatic Collision Notification, it will activate only in limited circumstances. Services vary by vehicle and are subject to change at any time without notice. Terms of Use apply. Data charges may apply. See *Owner's Manual* and <https://www.toyota.com/connected-services/>. For Toyota's Connected Services' data collection, use, sharing and retention practices, please visit <https://www.toyota.com/support/privacy-notice/>. The Safety Connect® trial period is at no extra cost and begins on the original date of purchase or lease of a new vehicle. After the trial period expires, enrollment in paid subscription is required to access the service. 27. Service Connect depends on certain factors outside of Toyota's control in order to operate, including cellular network availability and GPS signal. Without either of these things, operability may be limited or precluded. Information provided is based on the last time data was collected from vehicle and is not real-time data. Services vary by vehicle and are subject to change at any time without notice. Terms of Use apply. Data charges may apply. See usage precautions and service limitations in *Owner's Manual* and <https://www.toyota.com/connected-services/>. To learn about Toyota's Connected Services' data collection, use, sharing and retention practices, please visit <https://www.toyota.com/support/privacy-notice/>. The Service Connect trial period is at no extra cost and begins on the original date of purchase or lease of a new vehicle. Subscription required after trial. Service Connect renewal will be included when Safety Connect®, Remote Connect or Destination Assist connected service renewal is selected. Service Connect is not renewable as a stand-alone service. 28. Use only if aware of circumstances surrounding vehicle and it is legal and safe to do so (e.g., do not remotely start a gas engine vehicle in an enclosed space or if vehicle is occupied by a child). Remote Connect depends on certain factors outside of Toyota's control in order to operate, including cellular network availability, a cellular connection and GPS signal. Without any one or more of these things, operability may be limited or precluded. Services subject to change at any time without notice. Requires app download/registration and subscription after trial (if applicable). Remote start/stop and/or lock/unlock available on select models. Terms of Use apply. Data charges may apply. See *Owner's Manual* and <https://www.toyota.com/connected-services/> for usage precautions and limitations. To learn about Toyota's Connected Services' data collection, use, sharing and retention practices, please visit <https://www.toyota.com/support/privacy-notice/>. Trial period begins on original purchase or lease date of new vehicle. Paid subscription required after trial (if applicable). Terms of Use apply. 29. Performance figures are for comparison only and were obtained with prototype vehicles by professional drivers. 30. This floor mat/floor liner was designed specifically for use in your model and model year vehicle and SHOULD NOT be used in any other vehicle. To avoid potential interference with pedal operation, each mat/liner must be secured with its fasteners. Do not install a floor mat/floor liner on top of an existing floor mat/floor liner. 31. HomeLink® and the HomeLink® house icon are registered trademarks of Gentex Corporation. 32. Genuine Toyota Paint Protection Film by 3M™ is designed for specific sections of the vehicle most prone to chipping and may vary depending on vehicle model. Select applications may require an additional charge. Toyota Genuine Accessory Warranty only applies when installation is performed by a trained Toyota-approved installer. See Toyota dealer for details. 33. Toyota strives to build vehicles to match customer interest and thus they typically are built with popular options and option packages. Not all options/packages are available separately and some may not be available in all regions of the country. See toyota.com for information about options/packages commonly available in your area. If you would prefer a vehicle without any or with different options, contact your dealer to check for current availability or the possibility of placing a special order. Color(s) depicted may vary based on multiple factors, including ambient lighting and the format in which it is being viewed (e.g., computer, mobile device or print). 34. May not be compatible with all mobile phones, smart devices, tablets, e-readers, MP3/WMA players and like models. 35. Brake Assist is designed to help the driver take advantage of ABS and is not a substitute for safe driving practices. Braking effectiveness also depends on proper vehicle maintenance, tire and road conditions. See *Owner's Manual* for additional limitations and details. 36. The backup camera does not provide a comprehensive view. Always look over shoulder and use outside mirrors. See *Owner's Manual* for limitations. 37. Hill Start Assist Control is designed to minimize backward rolling on steep ascents. Not a substitute for safe driving judgment and practices. Speed, grade, surface conditions, driver input, etc., can all affect HAC function. See *Owner's Manual*. 38. The Tire Pressure Monitor System alerts the driver when tire pressure is critically low. For optimal tire wear and performance, tire pressure should be checked regularly with a gauge; do not rely solely on the monitor system. See *Owner's Manual* for limitations and details.

DISCLOSURES

Toyota strives to build vehicles to match customer interest and thus they typically are built with popular options and option packages. Not all options/packages are available separately and some may not be available in all regions of the country. See toyota.com for information about options/packages commonly available in your area. If you would prefer a vehicle without any or with different options, contact your dealer to check for current availability or the possibility of placing a special order.

Color(s) depicted may vary based on multiple factors, including ambient lighting and the format in which it is being viewed (e.g., computer, mobile device or print).

Some vehicles are shown with available equipment. Seatbelts should be worn at all times. For details on vehicle specifications, standard features and available equipment in your area, contact your Toyota dealer. A vehicle with particular equipment may not be available at the dealership. Ask your Toyota dealer to help locate a specifically equipped vehicle.

All information presented herein is based on data available at the time of posting, is subject to change without notice and pertains specifically to mainland U.S.A. vehicles only. Vehicles shown may be prototypes, shown using visual effects and/or shown with options. Actual models may vary.



Mobility

For Toyota Mobility program details, go to www.toyota.com/mobility or call the Toyota Brand Engagement Center at 1-800-331-4331