



TOYOTA

2026 Toyota Crown

Innovation that makes a statement.

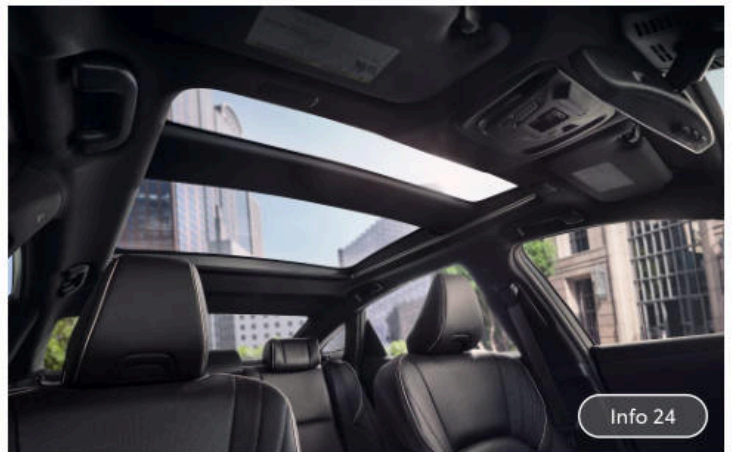
Push the boundaries with Toyota Crown's sophisticated design, modern technology and high-end performance.



Info 22



Info 23



Info 24

Crafted to captivate.



Distinctively Styled Nightshade Edition

Toyota Crown Nightshade Edition brings an element of mystery and allure to an already refined drive. Striking 21-in. 10-spoke wheels with a black finish set the tone that's carried throughout the exterior styling. From the door handles to the mirror caps and the rear badging, all are given a darkened Nightshade treatment.



Bi-Tone Exterior

All the components of Toyota Crown Platinum's daring design work together to make one clear argument—this premium sedan was crafted to stand out. With an available bi-tone finish that extends from the hood to the rear,²⁵ Toyota Crown Platinum commands attention on every occasion.



Disruptive Design

At first glance, Toyota Crown's dynamically proportioned design gives it an elegant and streamlined appearance. And the sharp line of the Daytime Running Lights (DRL) emphasizes its contemporary grille, while its refined taillight flows across the rear to complete this sedan's captivating design.



Power Trunk With Kick Sensor

On Platinum, you can access Toyota Crown's cargo space without lifting a finger. As long as you have your Smart Key, you can simply wave your foot under the rear bumper to open the trunk lid, making loading and unloading easier than ever.¹⁸

Exhilaration unleashed.

Engineered for excitement, Toyota Crown is most alive going full force.



Paddle Shifters

Paddle shifters allow you to shift up or down through the transmission's gears, all without removing your hands from the steering wheel.



Hybrid MAX Powertrain

An available Hybrid MAX powertrain pairs Toyota Crown's 2.4L turbocharged engine with electric motors to generate an exceptional 340 net combined horsepower. The placement of the electric motors—between the engine and transmission, and one positioned to power the rear axle—allows for power to be transferred without any lag.



Hybrid EV Power and Efficiency

Toyota Crown XLE and Limited are equipped with a highly efficient hybrid system that features a high-output bipolar nickel-metal hybrid battery and has up to a 41 combined EPA-estimated mpg rating ²⁸ and 236 net combined horsepower.

PERFORMANCE



Driving Confidence

The Hybrid MAX powertrain, with full-time Electronic AWD, finely tunes the power distribution for enhanced control, while the traditional hybrid uses Electronic On-Demand AWD, sending up to 80% of power to the rear wheels for more muscle.

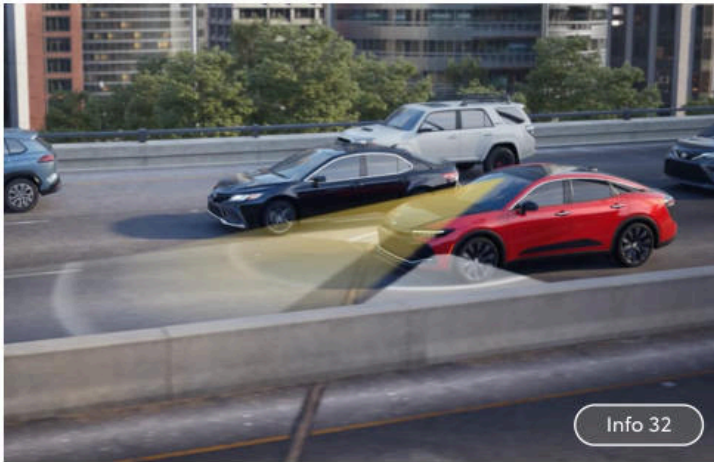


State-of-the-Art Suspension

On twists and turns, Toyota Crown's available Adaptive Variable Suspension reads the road and adapts in real time to provide responsive handling and adjust damping, resulting in a sleek, comfortable ride.

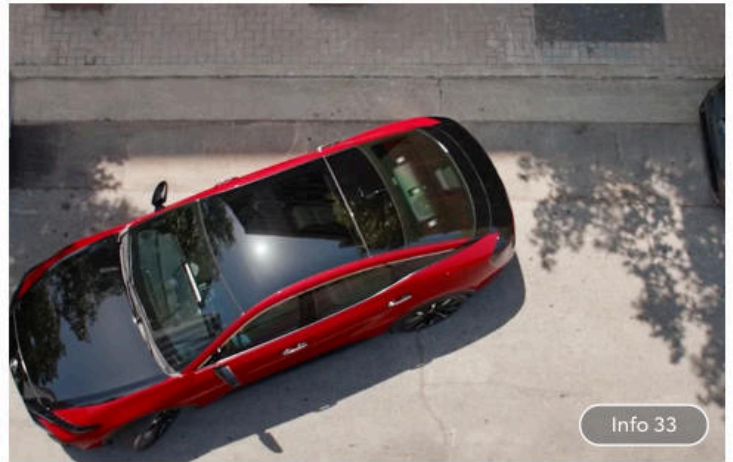
Innovation for Every Journey

Toyota Crown features tech that feels intuitive from day one. A suite of driver-assistance features helps you navigate the city with effortless precision. Inside, Toyota Crown's 12.3-in. Toyota Audio Multimedia touchscreen provides turn-by-turn directions and access to your favorite apps.



Traffic Jam Assist

This available feature helps you navigate the ebb and flow of stop-and-go traffic on controlled-access highways by providing control of the vehicle at speeds under 25 mph. ³¹ Requires an active Drive Connect trial or subscription. ¹¹ 4G network dependent.



Advanced Park

Toyota Crown's available Advanced Park ²¹ makes fitting into a tight spot as simple as pressing a button. Just sit back, take your hands off the wheel and watch this advanced system work its magic.



Panoramic View Monitor

Toyota Crown's available Panoramic View Monitor (PVM) ²⁰ uses cameras on the front, sides and rear to display a panoramic overhead view of what's going on around you.



Qi Wireless Charging

With an intuitively placed charging slot in the center console, you can simply place your Qi-compatible ² device down and its battery will start charging up.



12.3-In. Digital Gauge Cluster

Behind the wheel, you don't have to look far to find the information you need. Inside Toyota Crown's digital gauge cluster, a color Multi-Information Display (MID) combination meter highlights your driving mode, fuel efficiency, safety alerts and more. Stay up to speed with the latest alerts and feel more in control on every drive.

INTERIOR

Crafted for comfort, designed for you.

Toyota Crown creates a premium driving experience. A variety of climate controls takes the cabin to the next level, maximizing comfort with a heated steering wheel, standard heated and ventilated front seats, and heated rear seats. Toyota Crown's interior is further defined with an available panoramic roof and available Head-Up Display (HUD) meant to elevate all your travels.

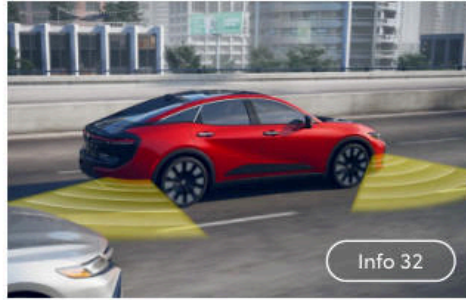


Safety & Convenience



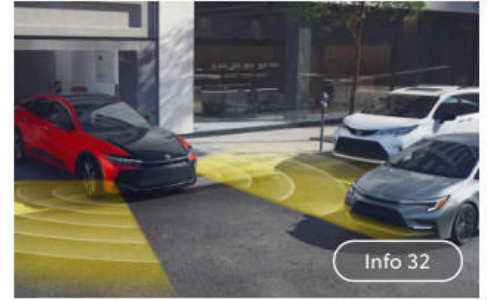
Blind Spot Monitor With Rear Cross-Traffic Alert

Blind Spot Monitor (BSM) ¹ is designed to warn you when a vehicle in the next lane enters Toyota Crown's blind spot on either side of the vehicle. And when you're in reverse, Rear Cross-Traffic Alert (RCTA) ¹³ is designed to help detect vehicles approaching from either side, warning you with side mirror indicators and a warning tone.



Lane Change Assist

Toyota Crown helps you change lanes in traffic. By partially engaging the turn signal, available Lane Change Assist (LCA) ³⁶ is designed to confirm there are no vehicles in your way and can provide steering assistance into the new lane.



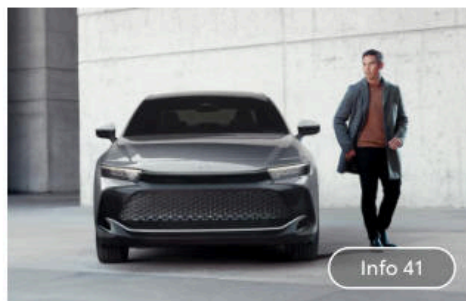
Front Cross-Traffic Alert

Available Front Cross-Traffic Alert (FCTA) ³⁷ is designed to detect vehicles that may be approaching from the side, so you can enter traffic at intersections with added confidence.



Front and Rear Parking Assist With Automatic Braking (PA w/AB)

This available driver-assistance feature is designed to warn you audibly and visually when it detects stationary objects, people walking by or vehicles approaching from the rear by sending you an alert inside the vehicle and reducing engine power and/or applying the brakes. ¹⁷



Hybrid Battery Warranty

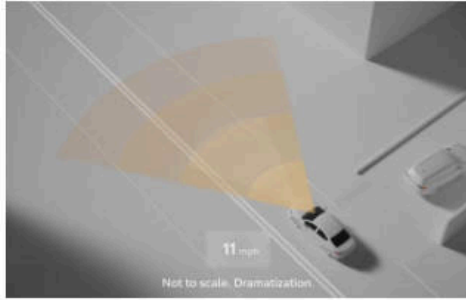
Peace of mind for the long road ahead. Every Toyota Hybrid Battery Warranty ³⁸ for 2026 models provides coverage for 10 years from date of first use or 150,000 miles, whichever comes first.



No Cost Maintenance Plan and Roadside Assistance

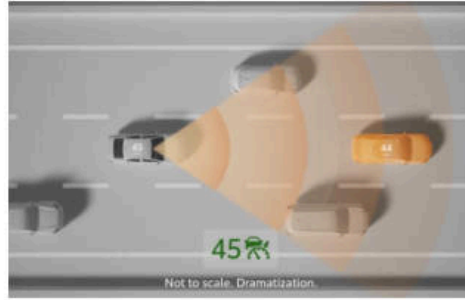
Every new Toyota Crown comes with ToyotaCare, ³⁹ a maintenance plan that covers normal factory scheduled service for 2 years or 25,000 miles, whichever comes first and 24-hour Roadside Assistance for 2 years, unlimited mileage.

Toyota Safety Sense™ 3.0 ¹²



Pre-Collision System With Pedestrian Detection

PCS w/PD ⁴² can alert you to potential collisions and may automatically brake.



Full-Speed Range Dynamic Radar Cruise Control

DRCC ³ helps maintain a preset distance from the vehicle ahead of you, from highway speeds down to a full stop.



Lane Departure Alert With Steering Assist

LDA w/SA ⁴³ may alert you to inadvertent lane departures and make minor steering corrections to help keep you in your lane.



Lane Tracing Assist

LTA ⁴⁴ helps you center the vehicle within its lane while DRCC ⁴⁵ is active.

MORE FEATURES



Road Sign Assist

RSA ⁴⁶ can recognize certain road signs and display them to you inside the vehicle.



Automatic High Beams

AHB ⁴⁷ can automatically toggle between high and low beams based on the vehicle's surroundings.



Proactive Driving Assist

PDA ⁴⁸ may provide gentle braking and/or steering to help control distance between your vehicle and a vehicle, pedestrian or bicyclist ahead of you.

Audio Multimedia



JBL® Premium Audio

Enjoy the soundtrack of every drive. Toyota Crown's available 800-watt JBL®¹⁶ Premium Audio system utilizes 11 speakers with a subwoofer to produce phenomenal sound, for an immersive experience.



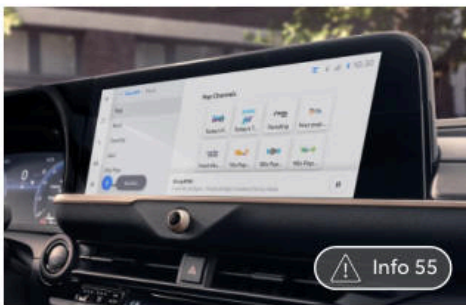
Wireless Apple CarPlay®

Bring along a familiar interface. With Toyota Crown's wireless Apple CarPlay®⁵ compatibility, you can use your compatible iPhone®⁴⁹ with the multimedia system to get directions, make calls, send and receive messages, and listen to music, all while staying focused on your drive.⁵⁰



Wireless Android Auto™

Stay connected on or off the road. By pairing your compatible Android™⁵¹ phone with the audio multimedia system, wireless Android Auto™⁶ compatibility lets you get real-time traffic alerts, make and receive phone calls, listen to your favorite soundtrack and more.⁵⁰



SiriusXM® 3-Month Trial Subscription

SiriusXM®⁷ has premium entertainment that you won't hear anywhere else. With a 3-month trial, you get 425+ channels, including 165+ in your vehicle, to enjoy ad-free music, plus sports, news, comedy and more. Experience even more on the SiriusXM® app, featuring expertly curated podcasts, Xtra channels of music, Artist Stations, SiriusXM® video and more.

Connected Services



Drive Connect

With an active Drive Connect trial or subscription,¹¹ the Cloud Navigation⁵⁶ and Intelligent Assistant⁵⁷ features help you find where you need to be, while Destination Assist⁵⁸ allows you to talk to a live agent while they help you find your destination's coordinates and offer directions on how to get there. 1-year trial included. 4G network dependent.



Remote Connect

Toyota Crown is up to speed with the latest tech. With an active Remote Connect trial or subscription,⁸ you can start the engine, lock/unlock doors and locate your vehicle using the Toyota app⁵⁹ through your compatible smartphone or smartwatch. 1-year trial included. 4G network dependent.



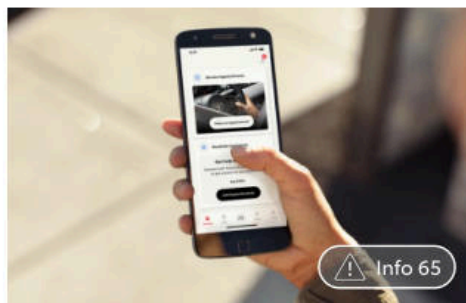
Wi-Fi Connect

Turn Toyota Crown into a hotspot. With an active Wi-Fi Connect trial or subscription,⁹ you can easily connect up to five devices. And, depending on your existing mobile provider, you can add the Wi-Fi Connect subscription to your current mobile plan. We'll even include a 1-month or 3-GB trial to get you started. 4G network dependent.



Safety Connect®

Connect to our 24/7 response center, in case of an accident or emergency, with the press of a button. You also get 24/7 Roadside Assistance⁶⁰ and Stolen Vehicle Locator⁶¹ to help give you peace of mind that help is on the way. 5-year-minimum trial subscription included. 4G network dependent.



Service Connect

Stay up to date with your Toyota Crown's information, such as status and alerts, maintenance reminders and more.¹⁰ It's a convenient way to help make sure your Toyota Crown is running at its best. 5-year-minimum trial subscription included. 4G network dependent.

Beyond Zero



Beyond Zero is Toyota's vision to reach carbon neutrality with our products, services and operations, and go beyond, as we find new ways to make a positive impact on our planet and society. The all-hybrid Toyota Crown is one of the many ways we are reducing carbon emissions to drive toward our Beyond Zero vision.

We currently offer more low and zero emission vehicles combined than any other automaker, to give customers numerous choices to reduce their carbon footprint.

Hybrid EV

Toyota Crown is a part of the Hybrid EV Family.

The Power Of Choice

Our lineup brings you more than just your choice of electrified powertrains: Hybrid EV, Plug-in Hybrid EV, Battery EV and Fuel Cell EV. Whatever you're looking for in a ride—size, style, efficiency, speed—there's a vehicle to suit your lifestyle that allows you to put more electrified miles on the road.

Going Above and Beyond

Whether Toyota is decreasing its single-use plastic waste, supporting water conservation efforts, or expanding programs that protect biodiversity, we are committed to reducing our environmental footprint and creating a positive impact on society. See Environmental Sustainability (toyota.com) for more information.

TOYOTA CROWN GRADES



XLE

Mechanical Features

- ✓ All-Wheel Drive (AWD)
- ✓ Electronically controlled Continuously Variable Transmission (ECVT)
- ✓ 2.5-Liter Dynamic Force 4-Cylinder DOHC 16-Valve D-4S Dual-Injection with VVT-iE and VVT-i

Exterior Features

- ✓ 19-in. multi-spoke machined-finish two-tone alloy wheels
- ✓ LED Daytime Running Lights (DRL)
- ✓ Bi-LED projector low
- ✓ Heated power outside mirrors with turn signal and blind spot warning indicators, ¹ puddle lights and power-folding feature
- ✓ Washer-linked variable intermittent windshield wiper
- ✓ Color-keyed outside door handles with front door touch-sensor lock/unlock feature

Interior Features

- ✓ Qi-compatible wireless charging with full-charge indicator light ²
- ✓ Heated and ventilated front seats
- ✓ 12.3-in. digital gauge cluster with selectable gauges
- ✓ Leather-trimmed front seats with seatback pockets
- ✓ Full-Speed Range Dynamic Radar Cruise Control (DRCC) ³
- ✓ Overhead console with maplights and Safety Connect® ⁴ button
- ✓ Heated leather-trimmed tilt/telescopic steering wheel with audio, infotainment and Driver Assist controls

Audio Multimedia

- ✓ 12.3-in. Toyota Audio Multimedia, six speakers, with wireless Apple CarPlay® ⁵ & Android Auto™ ⁶ compatibility, SiriusXM® ⁷ 3-month trial subscription. See toyota.com/connected-services for details.

Connected Services

- ✓ Remote Connect ⁸
- ✓ Wi-Fi Connect ⁹
- ✓ Service Connect ¹⁰
- ✓ Drive Connect ¹¹

Safety/Convenience

- ✓ Toyota Safety Sense™ 3.0 (TSS 3.0) ¹²
- ✓ Blind Spot Monitor (BSM) ¹ with Rear Cross-Traffic Alert (RCTA) ¹³
- ✓ Safe Exit Alert (SEA) ¹⁴
- ✓ Eight airbags ¹⁵



Limited

Mechanical Features

- ✓ All-Wheel Drive (AWD)
- ✓ Electronically controlled Continuously Variable Transmission (ECVT)
- ✓ 2.5-Liter Dynamic Force 4-Cylinder DOHC 16-Valve D-4S Dual-Injection with VVT-iE and VVT-i

Exterior Features

- ✓ LED Daytime Running Lights (DRL)
- ✓ Quad-LED projector low
- ✓ 19-in. multi-spoke machined-finish two-tone alloy wheels
- ✓ Panoramic fixed-glass roof with power sunshade
- ✓ Heated power outside mirrors with turn signal and blind spot warning indicators, ¹ puddle lights and power-folding feature
- ✓ Rain-sensing variable intermittent windshield wipers
- ✓ Color-keyed outside door handles with front door touch-sensor lock/unlock feature

Interior Features

- ✓ Qi-compatible wireless charging with full-charge indicator light ²
- ✓ Heated and ventilated front seats
- ✓ 12.3-in. digital gauge cluster with selectable gauges
- ✓ Leather-trimmed front seats with seatback pockets
- ✓ Full-Speed Range Dynamic Radar Cruise Control (DRCC) ³
- ✓ Overhead console with maplights and Safety Connect® ⁴ button

Audio Multimedia

- ✓ 12.3-in. Toyota Audio Multimedia with wireless Apple CarPlay® ⁵ & Android Auto™ ⁶ compatibility, SiriusXM® ⁷ 3-month trial subscription. See toyota.com/connected-services for details.
- ✓ 11-speaker JBL® ¹⁶ Premium Audio including subwoofer and amplifier

Connected Services

- ✓ Remote Connect ⁸
- ✓ Wi-Fi Connect ⁹
- ✓ Service Connect ¹⁰
- ✓ Drive Connect ¹¹

Safety/Convenience

- ✓ Toyota Safety Sense™ 3.0 (TSS 3.0) ¹²
- ✓ Blind Spot Monitor (BSM) ¹ with Rear Cross-Traffic Alert (RCTA) ¹³
- ✓ Front and Rear Parking Assist with Automatic Braking (PA w/AB) ¹⁷
- ✓ Safe Exit Alert (SEA) ¹⁴

Options and Packages

- ✓ Advanced Tech Package



Nightshade

Mechanical Features

- ✓ All-Wheel Drive (AWD)
- ✓ Electronically controlled Continuously Variable Transmission (ECVT)
- ✓ 2.5-Liter Dynamic Force 4-Cylinder DOHC 16-Valve D-4S Dual-Injection with VVT-iE and VVT-i

Exterior Features

- ✓ 21-in. 10-spoke wheels with matte-black finish
- ✓ LED Daytime Running Lights (DRL)
- ✓ Quad-LED projector low
- ✓ Panoramic fixed-glass roof with power sunshade
- ✓ Black outside door handles with front door touch-sensor lock/unlock feature
- ✓ Dark badging
- ✓ Heated power outside mirrors with turn signal and blind spot warning indicators, ¹ puddle lights and power-folding feature

Interior Features

- ✓ Qi-compatible wireless charging with full-charge indicator light ²
- ✓ Heated and ventilated front seats
- ✓ 12.3-in. digital gauge cluster with selectable gauges
- ✓ Leather-trimmed front seats with seatback pockets
- ✓ Full-Speed Range Dynamic Radar Cruise Control (DRCC) ³
- ✓ Overhead console with maplights and Safety Connect® ⁴ button
- ✓ Heated leather-trimmed tilt/telescopic steering wheel with audio, infotainment and Driver Assist controls

Audio Multimedia

- ✓ 12.3-in. Toyota Audio Multimedia with wireless Apple CarPlay® ⁵ & Android Auto™ ⁶ compatibility, SiriusXM® ⁷ 3-month trial subscription. See toyota.com/connected-services for details.
- ✓ 11-speaker JBL® ¹⁶ Premium Audio including subwoofer and amplifier

Connected Services

- ✓ Remote Connect ⁸
- ✓ Wi-Fi Connect ⁹
- ✓ Service Connect ¹⁰
- ✓ Drive Connect ¹¹

Safety/Convenience

- ✓ Blind Spot Monitor (BSM) ¹ with Rear Cross-Traffic Alert (RCTA) ¹³
- ✓ Toyota Safety Sense™ 3.0 (TSS 3.0) ¹²
- ✓ Front and Rear Parking Assist with Automatic Braking (PA w/AB) ¹⁷
- ✓ Safe Exit Alert (SEA) ¹⁴

TOYOTA CROWN GRADES



Platinum

Mechanical Features

- ✓ All-Wheel Drive (AWD)
- ✓ Dynamic Rear Steering
- ✓ Adaptive Variable Suspension (AVS) system
- ✓ Hybrid MAX 2.4-Liter inline 4-Cylinder turbocharged Hybrid DOHC 16-Valve D-4S Dual Injection with Dual VVT-i

Exterior Features

- ✓ Power trunk with hands-free kick sensor function ¹⁸
- ✓ 21-in. 10-spoke machined-finish alloy wheels with black accents
- ✓ LED Daytime Running Lights (DRL)
- ✓ Quad-LED projector low
- ✓ Panoramic fixed-glass roof with power sunshade
- ✓ Heated power outside mirrors with turn signal and blind spot warning indicators, ¹ puddle lights and power-folding feature
- ✓ Rain-sensing variable intermittent windshield wipers

Interior Features

- ✓ Qi-compatible wireless charging with full-charge indicator light ²
- ✓ Heated and ventilated front seats
- ✓ 12.3-in. digital gauge cluster with selectable gauges
- ✓ Leather-trimmed front seats with seatback pockets
- ✓ Digital Key ¹⁹ capability
- ✓ Full-Speed Range Dynamic Radar Cruise Control (DRCC) ³
- ✓ Overhead console with maplights and Safety Connect® ⁴ button

Audio Multimedia

- ✓ 12.3-in. Toyota Audio Multimedia with wireless Apple CarPlay® ⁵ & Android Auto™ ⁶ compatibility, SiriusXM® ⁷ 3-month trial subscription. See toyota.com/connected-services for details.
- ✓ 11-speaker JBL® ¹⁶ Premium Audio including subwoofer and amplifier

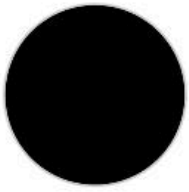
Connected Services

- ✓ Wi-Fi Connect ⁹
- ✓ Service Connect ¹⁰
- ✓ Drive Connect ¹¹

Safety/Convenience

- ✓ Blind Spot Monitor (BSM) ¹ with Rear Cross-Traffic Alert (RCTA) ¹³
- ✓ Toyota Safety Sense™ 3.0 (TSS 3.0) ¹²
- ✓ Panoramic View Monitor (PVM) ²⁰ with 360-degree Overhead View in low-speed drive and reverse, and Curb View
- ✓ Advanced Park ²¹

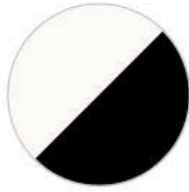
EXTERIOR



Black ⁶⁶



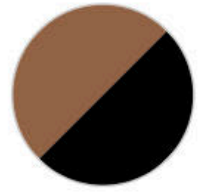
Finish Line Red
with Black bi-tone ²⁵



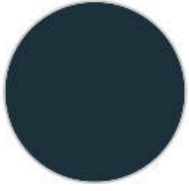
Oxygen White with
Black bi-tone ²⁵



Heavy Metal with
Black bi-tone ²⁵



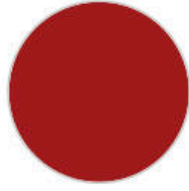
Bronze Age with
Black bi-tone ²⁵



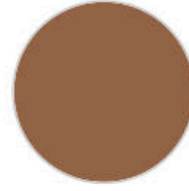
Storm Cloud ⁶⁶



Heavy Metal ²⁵



Finish Line Red ²⁵



Bronze Age ²⁵



Oxygen White ²⁵

INTERIOR



Black Leather



Black/Saddle Tan
Leather



Macadamia
Leather

Exterior	XLE	Limited	Nightshade	Platinum
19-in. multi-spoke machined-finish two-tone alloy wheels	S	S		
21-in. 10-spoke dark metallic alloy wheels		A		
21-in. 10-spoke machined-finish alloy wheels with black accents				S
21-in. 10-spoke wheels with matte-black finish			S	
Heated power outside mirrors with turn signal and blind spot warning indicators, puddle lights and power-folding feature	S	S	S	S
Rain-sensing variable intermittent windshield wipers		S	S	S
Washer-linked variable intermittent windshield wiper	S			
Acoustic noise-reducing windshield and driver and front passenger side windows	S	S	S	S
High Solar Energy-Absorbing (HSEA) glass	S	S	S	S
Bi-tone exterior color				A
Bi-LED projector low- and high-beam headlights, Automatic High Beams (AHB) and auto on/off	S			
LED Daytime Running Lights (DRL)	S	S	S	S
LED taillights and stop lights	S	S	S	S
Quad-LED projector low- and high-beam headlights, Automatic High Beams (AHB) and auto on/off		S	S	S
Color-keyed outside door handles with front door touch-sensor lock/unlock feature	S	S		S
Panoramic fixed-glass roof with power sunshade		S	S	S

Interior

Qi-compatible wireless charging with full-charge indicator light	S	S	S	S
Digital Key capability — Digital Key enables smartphone to be used instead of a physical key (Remote Connect subscription required.)		A		S
Smart Key System on all doors and trunk with Push Button Start, remote keyless entry system with lock, unlock, panic functions and remote illuminated entry	S	S	S	S
Dual extendable sun visors and illuminated vanity mirrors	S	S	S	S
Rear window defogger	S	S	S	S
Heated and ventilated front seats	S	S	S	S
Heated rear seats	S	S	S	S
Leather-trimmed front seats with seatback pockets	S	S	S	S
Leather-trimmed shift knob	S	S	S	S
Brake Hold function	S	S	S	S
Electric Parking Brake (EPB)	S	S	S	S
Power window with auto up/down and jam protection	S	S	S	S
Auto-dimming rearview mirror with HomeLink® universal transceiver	S	S	S	S
Full-Speed Range Dynamic Radar Cruise Control (DRCC)	S	S	S	S
12.3-in. digital gauge cluster with selectable gauges	S	S	S	S
Dual zone automatic climate control system with dust and pollen filter, and rear-seat vents	S	S	S	S
Front and rear seat reading lights and cargo area light	S	S	S	S

Interior (continued)	XLE	Limited	Nightshade	Platinum
Five USB-C charge ports — two front/two rear/one in console	S	S	S	S
One 12V/120W auxiliary power outlet in front console	S	S	S	S
60/40 split fold-down rear seats with adjustable headrest, and center armrest with cup holders	S	S	S	S
Covered center console, armrest and storage	S	S	S	S
Overhead console with maplights and Safety Connect® button	S	S	S	S
Two front and two rear cup holders	S	S	S	S

Audio Multimedia

11-speaker JBL® Premium Audio including subwoofer and amplifier		S	S	S
12.3-in. Toyota Audio Multimedia with wireless Apple CarPlay® & Android Auto™ compatibility, SiriusXM® 3-month trial subscription. See toyota.com/connected-services for details		S	S	S
12.3-in. Toyota Audio Multimedia, six speakers, with wireless Apple CarPlay® & Android Auto™ compatibility, SiriusXM® 3-month trial subscription. See toyota.com/connected-services for details	S			

Safety and Convenience

Tire Pressure Monitor System (TPMS) with direct pressure readout and individual tire location alert	S	S	S	S
Driver and front passenger Whiplash-Injury-Lessening (WIL) seats	S	S	S	S
Anti-theft system with alarm and engine immobilizer	S	S	S	S
Blind Spot Monitor (BSM) with Rear Cross-Traffic Alert (RCTA)	S	S	S	S
Collision sensors: deactivate high-voltage battery	S	S	S	S
Eight airbags — includes driver and front passenger Advanced Airbag System, driver and front passenger seat-mounted side airbags, driver and front passenger knee airbags, and front and rear curtain shield airbags	S	S	S	S
Front and Rear Parking Assist with Automatic Braking (PA w/AB)		S	S	S
Hill Start Assist Control (HAC)	S	S	S	S
Rear-Seat Reminder	S	S	S	S
Safe Exit Alert (SEA)	S	S	S	S
Star Safety System™ — includes Vehicle Stability Control (VSC), Traction Control (TRAC), Anti-lock Brake System (ABS), Electronic Brake-force Distribution (EBD), Brake Assist (BA) and Smart Stop Technology® (SST)	S	S	S	S
Toyota Safety Sense™ 3.0 (TSS 3.0) — Pre-Collision System w/Pedestrian Detection (PCS w/PD), Lane Tracing Assist (LTA), Full-Speed Range Dynamic Radar Cruise Control (DRCC), Lane Departure Alert w/Steering Assist (LDA w/SA), Automatic High Beams (AHB), Road Sign Assist (RSA), Proactive Drive Assist (PDA)	S	S	S	S
Vehicle Proximity Notification System (VPNS)	S	S	S	S
Backup camera with dynamic gridlines	S	S	S	

Safety and Convenience (continued)	XLE	Limited	Nightshade	Platinum
Panoramic View Monitor (PVM) with 360-degree Overhead View in low-speed drive and reverse, and Curb View		A		S
Front and rear energy-absorbing crumple zones	S	S	S	S
Side-impact door beams	S	S	S	S
Advanced Park				S
Energy-absorbing collapsible steering column	S	S	S	S
3-point seatbelts for all seating positions	S	S	S	S
LATCH (Lower Anchors and Tethers for CHildren) includes lower anchors on outboard rear seats and tether anchors on all rear seats	S	S	S	S

Mechanical/Performance

Dynamic Rear Steering				S
Electric Power Steering (EPS)	S	S	S	S
Super Ultra Low Emission Vehicle (SULEV)	S	S	S	S
Direct Shift-6AT 6-speed automatic transmission				S
Electronically controlled Continuously Variable Transmission (ECVT)	S	S	S	
Adaptive Variable Suspension (AVS) system				S
Independent MacPherson strut front suspension with stabilizer bar	S	S	S	S
Active Cornering Assist (ACA)	S	S	S	S
Electronically Controlled Braking (ECB) system with integrated regenerative braking	S	S	S	S
Power-assisted ventilated 12.9-in. front disc brakes	S	S	S	S
Nickel-Metal Hydride (Ni-MH)	S	S	S	S
2.5-Liter Dynamic Force 4-Cylinder DOHC 16-Valve D-4S Dual-Injection with VVT-iE and VVT-i	S	S	S	
Hybrid MAX 2.4-Liter inline 4-Cylinder turbocharged Hybrid DOHC 16-Valve D-4S Dual Injection with Dual VVT-i				S
Eco, NORMAL SPORT drive modes	S	S	S	
Eco, Rear Comfort, Normal, Sport and Custom drive modes				S
EV Mode	S	S	S	
All-Wheel Drive (AWD)	S	S	S	S

INFO AND DISCLOSURES

1. Do not rely exclusively on Blind Spot Monitor. Look over shoulder and use turn signal. See Owner's Manual for limitations. **2.** Wireless charging may not be compatible with all mobile phones, smart devices, tablets, e-readers, MP3/WMA players and like products. **3.** Full-Speed Range Dynamic Radar Cruise Control is not a substitute for safe and attentive driving. See Owner's Manual for instructions and limitations. **4.** Safety Connect® services vary by vehicle and are subject to change at any time without notice. Services depend on 4G network availability, a cellular connection, and GPS signal. Without any one or more of these things, operability may be limited or precluded, including access to response center and emergency support. Further, if and when 4G network changes or is discontinued, or the underlying technology required to support service becomes obsolete, then the services will not work and will need to be discontinued. Stolen vehicle police report required to use Stolen Vehicle Locator. Services require account registration through Toyota app and acceptance of Connected Services Terms of Use at <https://www.toyota.com/content/dam/toyota/privacyvts/pdf/connectedservices-terms-use.pdf> and Master Data Consent. Data charges may apply. For Toyota's Connected Services' vehicle-generated data collection, use, sharing, and retention practices and agreements, see <https://www.toyota.com/support/privacy-notice/>. The Safety Connect® trial is included for a minimum of 5 years. 4G network dependent. **5.** Apple CarPlay® requires a compatible iPhone® with an active data plan. Check compatibility at <https://www.apple.com/ios/carplay/>. Operability depends on network availability, a cellular connection and GPS signal. Services vary by vehicle and are subject to change at any time without notice. Data charges may apply. To learn more, go to <https://www.toyota.com/audio-multimedia/>. To learn more about Toyota Connected Services data collection, use, sharing and retention practices, please visit <https://www.toyota.com/support/privacy-notice/>. Apple CarPlay® is a registered trademark of Apple Inc. **6.** Wireless use of Android Auto requires a compatible Android 11.0+ phone and compatible active data plan. Check g.co/androidauto/requirements for compatibility. Operability depends on network availability, a cellular connection, and GPS signal. Services vary by vehicle and are subject to change at any time without notice. Data charges may apply. To learn more, go to <https://www.toyota.com/audio-multimedia/>. To learn more about Toyota's Connected Services data collection, use, sharing, and retention practices, please visit <https://www.toyota.com/support/privacy-notice/>. Google, Android, Android Auto, YouTube Music and other marks are trademarks of Google LLC. **7.** Service will automatically stop at the end of your trial subscription period unless you decide to continue service. Trial is non-transferable. If you do not wish to enjoy your trial, you can cancel by calling the number below. All SiriusXM services require a subscription, each sold separately by SiriusXM after the trial period. Service subject to the SiriusXM Customer Agreement and Privacy Policy, visit siriusxm.com for complete terms and how to cancel which includes online methods or calling 1-866-635-2349. Some services and features are subject to device capabilities and location availability. Satellite service not available in AK & HI. Content varies by SiriusXM subscription plan. All fees, content and features are subject to change. SiriusXM and related logos are trademarks of Sirius XM Radio Inc. and its respective subsidiaries. **8.** Use only if aware of circumstances surrounding vehicle it is legal safe to do so (e.g., do not remotely start a gas engine vehicle in an enclosed space or if vehicle is occupied by a child). Remote Connect services vary by vehicle and are subject to change at any time without notice. Services depend on 4G network availability, a cellular connection and GPS signal. Without any one or more of these things, operability may be limited or precluded. Further, if and when 4G network changes or is discontinued, or the underlying technology required to support service becomes obsolete, then the services will not work and will need to be discontinued. Digital Key also requires Bluetooth® connectivity. Not available on manual transmissions. Services require account registration through Toyota app and acceptance of Connected Services Terms of Use at [toyota.com/content/dam/toyota/privacyvts/pdf/connected-services-terms-use.pdf](https://www.toyota.com/content/dam/toyota/privacyvts/pdf/connected-services-terms-use.pdf) and Master Data Consent. Data charges may apply. For Toyota's Connected Services' vehicle-generated data collection, use, sharing, and retention practices and agreements, see [toyota.com/support/privacy-notice/](https://www.toyota.com/support/privacy-notice/). Trial period begins on original purchase or lease date of new vehicle. Paid subscription required after trial (if applicable). Terms of Use apply. **9.** Service not available everywhere or in every vehicle. Depends on 4G cellular network availability, a cellular connection and GPS signal. Without any one or more of these things, operability may be limited or precluded. Up to 5 devices can be supported using in-vehicle connectivity. Services may vary and are subject to change without notice. Data charges may apply. Requires separate subscriptions to third-party provider services. Valid in the contiguous U.S. and Alaska. Go to <https://myvehicle.att.com/#/toyota/learn?language=en=US> for terms and conditions. The Wi-Fi Connect trial begins at the time of enrollment and expires the earlier of 3GB data use or the 1-month trial period ends. Trial begins at activation and expires the earlier of 3 GB data use or 1 mo. Valid in contiguous U.S. and Alaska. See <https://myvehicle.att.com/#/toyota/learn?language=en=US> for terms and conditions. **10.** Service Connect services vary by vehicle and are subject to change at any time without notice. Services depend on 4G network availability, a cellular connection, and GPS signal. Without any one or more of these things, operability may be limited or precluded. Further, if and when 4G network changes or is discontinued, or the underlying technology required to support service becomes obsolete, then the services will not work and will need to be discontinued. Information provided is based on the last time data was collected from the vehicle and is not real-time data. Services require account registration through Toyota app and acceptance of Connected Services Terms of Use at <https://www.toyota.com/content/dam/toyota/privacyvts/pdf/connected-services-terms-use.pdf> and Master Data Consent. Data charges may apply. For Toyota's Connected Services' vehicle-generated data collection, use, sharing, and retention practices and agreements, see <https://www.toyota.com/support/privacy-notice/>. The Service Connect trial is included for a minimum of 5 years. 4G network dependent. **11.** Drive Connect services may vary and are subject to change at any time without notice. Availability and accuracy depend on 4G network availability, a cellular connection and GPS signal. Without any one or more of these things, operability may be limited or precluded. Further, if and when 4G network changes or is discontinued, or the underlying technology required to support service becomes obsolete, then services will not work, and will need to be discontinued. Services require account registration through Toyota app and acceptance of Connected Services Terms of Use at [toyota.com/content/dam/toyota/privacyvts/pdf/connected-services-terms-use.pdf](https://www.toyota.com/content/dam/toyota/privacyvts/pdf/connected-services-terms-use.pdf) and Master Data Consent. Data charges may apply. For Toyota's Connected Services' vehicle-generated data collection, use, sharing, and retention practices and agreements, see [toyota.com/support/privacy-notice/](https://www.toyota.com/support/privacy-notice/). Trial period begins on original purchase or lease date of new vehicle. Services may vary and are subject to change without notice. Requires app download/registration, acceptance of Terms of Use and subscription after trial (if applicable). Data charges may apply. **12.** Toyota Safety Sense™ effectiveness is dependent on many factors including road, weather and vehicle conditions. Drivers are responsible for their own safe driving. Always pay attention to your surroundings and drive safely. See Owner's Manual for limitations. **13.** Do not rely exclusively on the Rear Cross-Traffic Alert. Visually confirm clearance during use. See Owner's Manual for limitations. **14.** Do not rely exclusively on Safe Exit Alert. Always look for approaching traffic before exiting the vehicle. See Owner's Manual for limitations. **15.** Airbag systems supplement the seatbelts and are designed to inflate only under certain conditions and in certain types of severe collisions. Always wear seatbelt, sit upright in middle and as far back in seat as possible to help decrease risk of injury. Do not put objects in front of an airbag. See Owner's Manual for limitations. **16.** JBL® is a registered trademark of Harman International Industries, Inc. **17.** Front and Rear Parking Assist with Automatic Braking (PA

INFO AND DISCLOSURES

w/AB) may warn drivers of, and potentially brake for front and rear collisions with certain objects when traveling at low speeds. Drivers should visually confirm clearance during use. See Owner's Manual for instructions and limitations. **18.** Installation of a tow hitch receiver or other accessories located near the rear bumper or side-door kick sensors may require disabling or removing the kick sensor, and the sensor operation setting in your vehicle should be turned off. Water, weather, dirt, and other conditions also may cause the sensor to not operate properly or to operate unintentionally. See Owner's Manual for limitations. **19.** Digital Key requires active Remote Connect subscription. Remote start/stop and/or lock/unlock and other features of Remote Connect are only available on select models. Use only if aware of circumstances surrounding the vehicle it is legal and safe to do so (e.g., do not remotely start a gas engine vehicle in an enclosed space or if the vehicle is occupied by a child). Remote Connect depends on certain factors outside of Toyota's control in order to operate, including 4G network availability, a cellular connection, and GPS signal. Without any one or more of these things, operability may be limited or precluded. Digital Key also requires Bluetooth® connectivity. Remote Connect is included with select paid Connected Services packages. See your Toyota dealer for details. Services may vary and are subject to change without notice. Services require account registration through the Toyota app and acceptance of the Connected Services Terms of Use at <https://www.toyota.com/content/dam/toyota/privacys/terms-of-use.pdf> and Master Data Consent. Data charges may apply. For Toyota Connected Services' vehicle-generated data collection, use, sharing, and retention practices and agreements, see <https://www.toyota.com/support/privacy-notice/>. **20.** The Panoramic View Monitor does not provide a comprehensive view of the area surrounding your vehicle. Look around to confirm clearance. See Owner's Manual for limitations. **21.** Do not overly rely on Advanced Park and use only in accordance with applicable laws. Remain attentive to surroundings. Before operating, review Owner's Manual for instructions and limitations. **22.** Limited shown in Heavy Metal with available Advanced Technology Package. **23.** Platinum interior shown in Black leather trim. Wireless use of Android Auto requires a compatible Android 11.0+ phone and compatible active data plan. Check g.co/androidauto/requirements for compatibility. Operability depends on network availability, a cellular connection, and GPS signal. Services vary by vehicle and are subject to change at any time without notice. Data charges may apply. To learn more, go to <https://www.toyota.com/audio-multimedia/>. To learn more about Toyota's Connected Services data collection, use, sharing, and retention practices, please visit <https://www.toyota.com/support/privacy-notice/>. Google, Android, Android Auto, YouTube Music and other marks are trademarks of Google LLC. Screen depiction accurate at time of posting. **24.** Platinum interior shown in Black leather trim. **25.** Extra-cost color. **26.** Nightshade Edition shown in Storm Cloud. **27.** Platinum shown in Finish Line Red with Black bi-tone. **28.** EPA-estimated 42 city/41 highway/41 combined mpg rating for 2026 Toyota Crown XLE, Nightshade Edition and Limited; EPA-estimated 29 city/32 highway/30 combined mpg rating for 2026 Toyota Crown Platinum. Use for comparison purposes only. Your mileage will vary for many reasons, including your vehicle's condition and how/where you drive. See www.fueleconomy.gov. **29.** Paddle shifters shown. Platinum interior shown in Black leather trim. **30.** Hybrid MAX powertrain featured in Platinum grade. Vehicle shown using visual effects. **31.** Traffic Jam Assist is not an automated driving system, requires driver supervision at all times, and is designed to function on controlled access freeways at speeds of 25 mph or less. Operation requires Lane Tracing Assist to be active. Use this system in accordance with applicable laws. Requires an active subscription to Drive Connect that depends on 4G network availability and other factors. Service requires account registration through the Toyota app and acceptance of Connected Services Terms of Use at [toyota.com/content/dam/toyota/privacys/terms-of-use.pdf](https://www.toyota.com/content/dam/toyota/privacys/terms-of-use.pdf) and Master Data Consent. Data charges may apply. Before operating, refer to Owner's Manual for instructions and limitations. **32.** Platinum shown in Finish Line Red with Black bi-tone. Simulation shown. **33.** Platinum shown in Finish Line Red with Black bi-tone. 2023 model shown. **34.** Screen depiction accurate at time of posting. 12.3-in. multimedia display shown. Platinum interior shown in Black leather trim. **35.** Head-Up Display (HUD) shown in Platinum interior. **36.** Lane Change Assist operates only when Dynamic Radar Cruise Control (DRCC) and Lane Tracing Assist (LTA) are activated. Do not overly rely on this system. Driver must confirm lane is clear. See Owner's Manual for limitations. **37.** Do not overly rely on the Front Cross-Traffic Alert system. Always visually confirm that it is safe to proceed. See Owner's Manual for limitations. **38.** For Toyota hybrid, plug-in hybrid, fuel cell and battery electric vehicles beginning model year 2020, the hybrid (HV) battery is covered for 10 years from date of first use or 150,000 miles, whichever comes first. Coverage is subject to the terms and conditions of your New Vehicle Limited Warranty. See the Toyota Owner's Warranty and Maintenance Guide for details. **39.** ToyotaCare covers normal factory scheduled maintenance for 2 years or 25,000 miles, whichever comes first, and 24/7 Roadside Assistance is for 2 years/unlimited mileage (note: ToyotaCare for Mirai is 3 years/35,000 miles and Roadside Assistance for Mirai, bZ, bZ4X, Prius, Prius Prime and Prius Plug-in Hybrid is 3 years/unlimited mileage). Roadside Assistance does not include parts and fluids, except limited emergency gas delivery. Towing distance up to 25 miles. Restrictions apply. Available in the continental U.S. and Canada. See Toyota dealer for details and exclusions. **40.** Blind Spot Monitor (BSM) shown on Limited in Heavy Metal with available Advanced Technology Package. Do not rely exclusively on Blind Spot Monitor. Look over shoulder and use turn signal. See Owner's Manual for limitations. Platinum shown in Finish Line Red with Black bi-tone shown in mirror. **41.** Limited shown in Heavy Metal with available Advanced Tech Package. **42.** The Pre-Collision System (PCS) with Pedestrian Detection (PD) is designed to determine if impact is imminent and help reduce impact speed and damage in certain frontal collisions involving a vehicle, a pedestrian, a bicycle, or a motorcyclist. PCS w/PD is not a substitute for safe and attentive driving. System effectiveness depends on many factors, such as speed, size and position of pedestrian or bicyclist and weather, light and road conditions. See Owner's Manual for limitations. **43.** Lane Departure Alert with Steering Assist is designed to read visible lane markers under certain conditions. It provides a visual/audible alert and slight steering force when lane departure is detected. It is not a collision-avoidance system or a substitute for safe and attentive driving. Effectiveness depends on many factors including road, weather and vehicle conditions. See Owner's Manual for limitations. **44.** The Lane Tracing Assist (LTA) lane centering function is designed to read visible lane markers and detect other vehicles under certain conditions. It is only operational when DRCC is engaged. See Owner's Manual for limitations. **45.** Dynamic Radar Cruise Control is not a substitute for safe and attentive driving. See Owner's Manual for limitations. **46.** Road Sign Assist only recognizes certain road signs. See Owner's Manual for limitations. **47.** Automatic High Beams operate at speeds above 21 mph. See Owner's Manual for instructions and limitations. **48.** Proactive Driving Assist (PDA) is designed to detect certain objects or curves in the road and provide gentle braking and/or steering support. PDA is not a substitute for safe and attentive driving. System effectiveness depends on many factors, such as speed, size and position of detected objects and weather, light and road conditions. See Owner's Manual for additional limitations and details. **49.** iPhone® is a registered trademark of Apple Inc. All rights reserved. **50.** Screen depiction accurate at time of posting. **51.** Google, Android, Android

INFO AND DISCLOSURES

Auto, YouTube Music and other marks are trademarks of Google LLC. **52.** Available JBL® Premium Audio shown. JBL® is a registered trademark of Harman International Industries, Inc. Platinum interior shown in Black leather trim. **53.** Wireless Apple CarPlay® compatibility shown. Apple CarPlay® requires a compatible iPhone® with an active data plan. Check compatibility at <https://www.apple.com/ios/carplay/>. Operability depends on network availability, a cellular connection and GPS signal. Services vary by vehicle and are subject to change at any time without notice. Data charges may apply. To learn more, go to <https://www.toyota.com/audio-multimedia/>. To learn more about Toyota Connected Services data collection, use, sharing and retention practices, please visit <https://www.toyota.com/support/privacy-notice/>. Apple CarPlay® is a registered trademark of Apple Inc. Screen depiction accurate at time of posting. Platinum interior shown in Black leather trim. **54.** Wireless Android Auto™ compatibility shown. Wireless use of Android Auto requires a compatible Android 11.0+ phone and compatible active data plan. Check [g.co/androidauto/requirements](https://www.google.com/androidauto/requirements) for compatibility. Operability depends on network availability, a cellular connection, and GPS signal. Services vary by vehicle and are subject to change at any time without notice. Data charges may apply. To learn more, go to <https://www.toyota.com/audio-multimedia/>. To learn more about Toyota's Connected Services data collection, use, sharing, and retention practices, please visit <https://www.toyota.com/support/privacy-notice/>. Google, Android, Android Auto, YouTube Music and other marks are trademarks of Google LLC. Screen depiction accurate at time of posting. Platinum interior shown in Black leather trim. **55.** SiriusXM® shown. Service will automatically stop at the end of your trial subscription period unless you decide to continue service. Trial is non-transferable. If you do not wish to enjoy your trial, you can cancel by calling the number below. All SiriusXM services require a subscription, each sold separately by SiriusXM after the trial period. Service subject to the SiriusXM Customer Agreement and Privacy Policy, visit [siriusxm.com](https://www.siriusxm.com) for complete terms and how to cancel which includes online methods or calling 1-866-635-2349. Some services and features are subject to device capabilities and location availability. Satellite service not available in AK & HI. Content varies by SiriusXM subscription plan. All fees, content and features are subject to change. SiriusXM and related logos are trademarks of Sirius XM Radio Inc. and its respective subsidiaries. Screen depiction accurate at time of posting. Platinum interior shown in Black leather trim. **56.** Cloud Navigation requires a trial or subscription to Drive Connect. Drive Connect availability and accuracy depend on certain factors outside of Toyota's control in order to operate, including 4G network availability, a cellular connection and GPS signal. Without any one or more of these things, operability may be limited or precluded. Services subject to change at any time without notice. Requires app download/registration and subscription after trial (if applicable). Terms of Use apply. Data charges may apply. See Owner's Manual and <https://www.toyota.com/connected-services/> for limitations. To learn about Toyota's Connected Services data collection, use, sharing and retention practices, visit <https://www.toyota.com/support/privacy-notice/>. **57.** Intelligent Assistant requires a trial or subscription to Drive Connect. Drive Connect availability and accuracy depend on certain factors outside of Toyota's control in order to operate, including 4G network availability, a cellular connection and GPS signal. Without any one or more of these things, operability may be limited or precluded. Services subject to change at any time without notice. Requires app download/registration and subscription after trial (if applicable). Terms of Use apply. Data charges may apply. See Owner's Manual and <https://www.toyota.com/connected-services/> for limitations. To learn about Toyota's Connected Services data collection, use, sharing and retention practices, visit <https://www.toyota.com/support/privacy-notice/>. **58.** On select models, Destination Assist will require a trial or subscription to Drive Connect. Drive Connect services may vary and are subject to change at any time without notice. Availability and accuracy depend on 4G network availability, a cellular connection and GPS signal. Without any one or more of these things, operability may be limited or precluded. Further, if and when 4G network changes or is discontinued, or the underlying technology required to support service becomes obsolete, then services will not work, and will need to be discontinued. Services require account registration through Toyota app and acceptance of Connected Services Terms of Use at [toyota.com/content/dam/toyota/privacyvts/pdf/connected-services-terms-use.pdf](https://www.toyota.com/content/dam/toyota/privacyvts/pdf/connected-services-terms-use.pdf) and Master Data Consent. Data charges may apply. For Toyota's Connected Services' vehicle-generated data collection, use, sharing, and retention practices and agreements, see [toyota.com/support/privacy-notice/](https://www.toyota.com/support/privacy-notice/). Trial period begins on original purchase or lease date of new vehicle. Services may vary and are subject to change without notice. Requires app download/registration, acceptance of Terms of Use and subscription after trial (if applicable). Data charges may apply. The Destination Assist trial period begins on original purchase or lease date of new vehicle. Paid subscription required after trial (if applicable). Terms of Use apply. **59.** An active Remote Connect trial or subscription is required to use the features mentioned in the Toyota app. **60.** Enhanced 24/7 Roadside Assistance allows use of in-vehicle SOS button to assist response agent to identify vehicle location. Unlimited mileage coverage effective with an active Safety Connect® trial or subscription that depends on certain factors, including 4G network availability. Services require account registration through the Toyota app and acceptance of Connected Services Terms of Use at [toyota.com/content/dam/toyota/privacyvts/pdf/connected-services-terms-use.pdf](https://www.toyota.com/content/dam/toyota/privacyvts/pdf/connected-services-terms-use.pdf) and Master Data Consent. Data charges may apply. For Toyota's Connected Services' vehicle-generated data collection, use, sharing, and retention practices and agreements, see [toyota.com/support/privacy-notice/](https://www.toyota.com/support/privacy-notice/). Enhanced Roadside Assistance does not include parts and fluids, except limited emergency gas delivery. Towing distance up to 25 miles. Restrictions apply. Service subject to change at any time. Available in the continental U.S. and Canada. See Toyota dealer for details and exclusions. **61.** Building and/or parking structures may limit system effectiveness. Stolen vehicle police report required to use Stolen Vehicle Locator. For additional assistance contact the Toyota Brand Engagement Center at 1-800-331-4331. **62.** Platinum shown in Finish Line Red with Black bi-tone. Extra-cost color. **63.** Limited interior shown in Black leather trim with available Advanced Technology Package. **64.** Available Safety Connect® shown. Safety Connect® services vary by vehicle and are subject to change at any time without notice. Services depend on 4G network availability, a cellular connection, and GPS signal. Without any one or more of these things, operability may be limited or precluded, including access to response center and emergency support. Further, if and when 4G network changes or is discontinued, or the underlying technology required to support service becomes obsolete, then the services will not work and will need to be discontinued. Stolen vehicle police report required to use Stolen Vehicle Locator. Services require account registration through Toyota app and acceptance of Connected Services Terms of Use at <https://www.toyota.com/content/dam/toyota/privacyvts/pdf/connectedservices-terms-use.pdf> and Master Data Consent. Data charges may apply. For Toyota's Connected Services' vehicle-generated data collection, use, sharing, and retention practices and agreements, see <https://www.toyota.com/support/privacy-notice/>. The Safety Connect® trial is included for a minimum of 5 years. 4G network dependent. **65.** Available Service Connect shown. Service Connect services vary by vehicle and are subject to change at any time without notice. Services depend on 4G network availability, a cellular connection, and GPS signal. Without any one or more of these things, operability may be limited or precluded. Further, if and when 4G network changes or is discontinued, or the underlying technology required to support service becomes obsolete, then the services will not work and will need to be discontinued. Information provided is based on the last time data was collected from the vehicle and is not real-time data. Services require account registration through Toyota app and acceptance of Connected Services Terms of Use at <https://www.toyota.com/content/dam/toyota/privacyvts/pdf/connected-services-terms-use.pdf> and Master Data Consent. Data charges may apply. For Toyota's Connected Services' vehicle-generated data collection, use, sharing, and retention practices and agreements, see <https://www.toyota.com/support/privacy-notice/>. The Service Connect trial is included for a minimum of 5 years. 4G network dependent. **66.** Image for illustrative purposes only, production model may vary.

INFO AND DISCLOSURES


Toyota strives to build vehicles to match customer interest and thus they typically are built with popular options and option packages. Not all options/packages are available separately and some may not be available in all regions of the country. See toyota.com for information about options/packages commonly available in your area. If you would prefer a vehicle without any or with different options, contact your dealer to check for current availability or the possibility of placing a special order.

Color(s) depicted may vary based on multiple factors, including ambient lighting and the format in which it is being viewed (e.g., computer, mobile device or print).

Some vehicles are shown with available equipment. Seatbelts should be worn at all times. For details on vehicle specifications, standard features and available equipment in your area, contact your Toyota dealer. A vehicle with particular equipment may not be available at the dealership. Ask your Toyota dealer to help locate a specifically equipped vehicle.

All information presented herein is based on data available at the time of posting, is subject to change without notice and pertains specifically to mainland U.S.A. vehicles only. Vehicles shown may be prototypes, shown using visual effects and/or shown with options. Actual models may vary.

LEGEND

 Vehicle Information	 Info Legal Disclosure
---	---

WARRANTIES

Date and mileage limitations refer to whichever occurs first from the date of purchase. Warranty coverage is subject to other terms and conditions. Refer to applicable Warranty and Maintenance Guide for full details.

Date and mileage limitations refer to whichever comes first from the date of first purchase. Warranty coverage is subject to other terms and conditions. Refer to applicable Warranty and Maintenance Guide for full details and for information regarding the Federal and California Emission Control Warranties, and Tire Limited Warranties. Emission coverages vary under Federal and California regulations.

For Toyota hybrid, plug-in hybrid, fuel cell and battery electric vehicles beginning model year 2020, the hybrid (HV) battery is covered for 10 years from date of first use or 150,000 miles, whichever comes first. Coverage is subject to the terms and conditions of your New Vehicle Limited Warranty. See the Toyota Owner's Warranty and Maintenance Guide for details.