



**TOYOTA**

2026 Tundra

2026 TUNDRA

# Go out and grind. All day, every day.

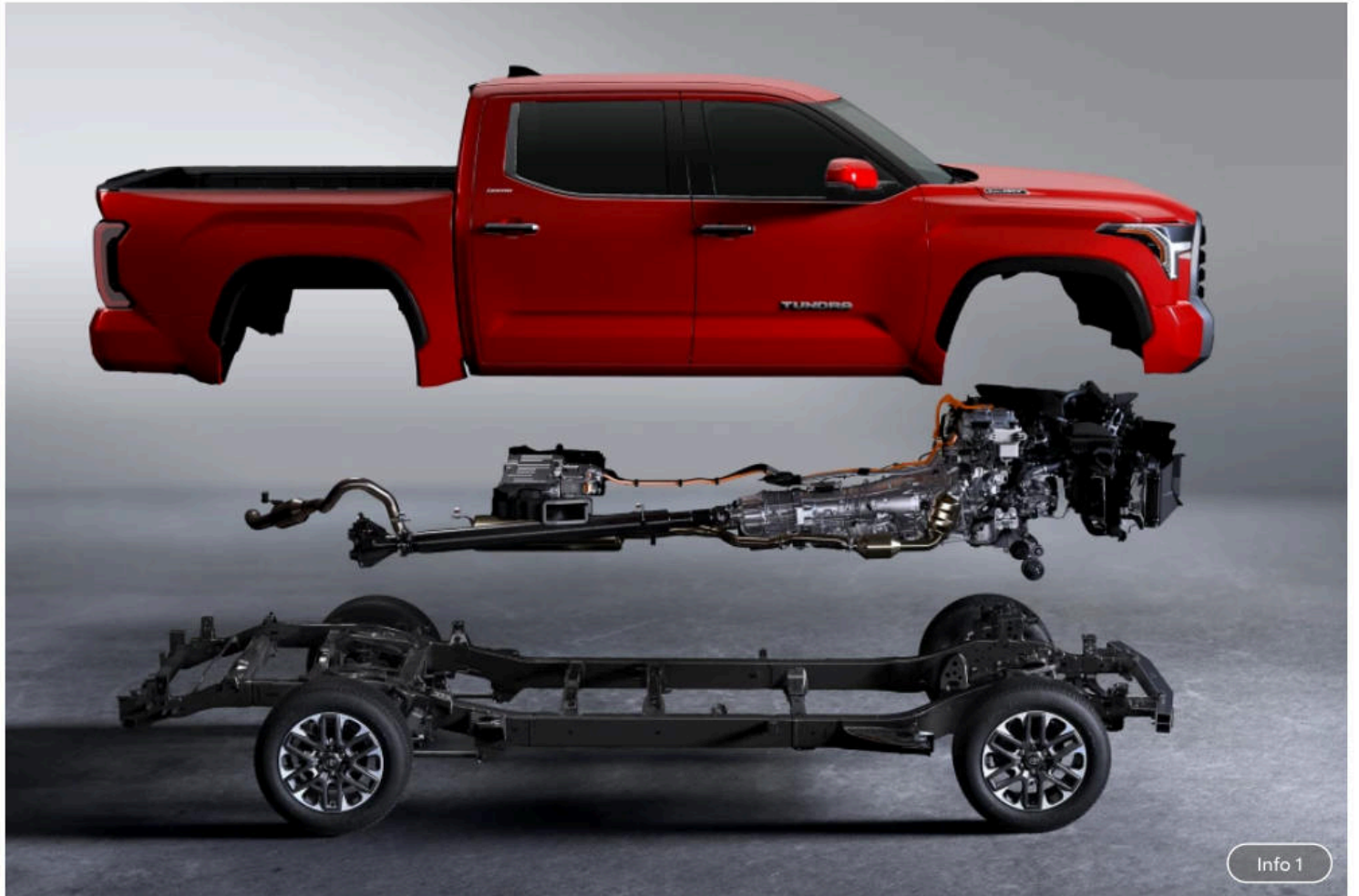
Tundra is more than a hardworking pickup—  
it's a weekend warrior built for taking you on  
far-out adventures that leave you with  
unforgettable memories.



2026 TUNDRA

# Equipped for the day, and the day off.

See what makes Tundra stand out.



Info 1

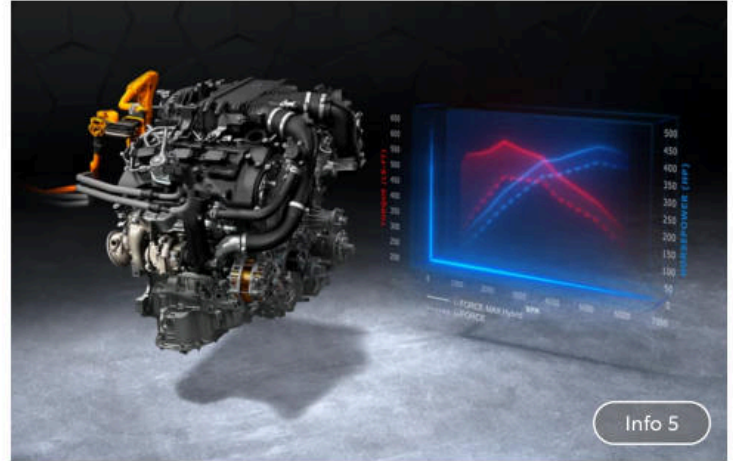
# Take the lead.

Get ready to seize your adventures with the ever-capable and powerfully equipped Tundra.



## Electrified i-FORCE MAX Powertrain

Tundra's available i-FORCE MAX engine applies hybrid tech for more performance. Pairing the twin-turbo V6 with an electric motor, this hybrid engine generates an electrifying 437 horsepower and an amazing 583 lb.-ft. of torque, with no discernible lag.



## i-FORCE MAX Twin-Turbo V6

Tundra's available i-FORCE MAX hybrid powertrain generates its 583 lb.-ft. of torque where you need it most, in the low rpm range, with maximum torque from all sources achieved at 2400 rpm.



## Max Towing of 12,000 Lbs.

Its powertrain, frame and suspension work together to give Tundra an available max towing capacity of up to 12,000 lbs.<sup>2</sup> Whether you're towing your trailer for a weekend getaway or taking the ATVs out for a spin in the desert, Tundra helps you haul with confidence.



## Crawl Control

Available on 4x4 TRD Pro and TRD Off-Road Packages, Tundra's next-generation Crawl Control (CRAWL)<sup>3</sup> system helps you smoothly and quietly take on tough terrain. This advanced system automatically modulates the throttle and brakes on five low-speed settings.

## PERFORMANCE + CAPABILITY



### Multi-Terrain Select

When you're in the thick of it, this available system helps regulate wheelspin by automatically adjusting the engine throttle and traction control. In 4x4 low and high ranges, a quick turn of the dial toggles between terrain modes: Mud, Sand, Rock, Mogul (i-FORCE only) or Auto (i-FORCE MAX only).



### Electronically Locking Rear Differential

Tundra's available electronically locking rear differential for TRD Pro and 4x4 TRD Off-Road Packages evenly distributes engine power to both rear wheels. Once the system is engaged, both rear wheels move at the same speed and provide more grip in low-traction conditions.



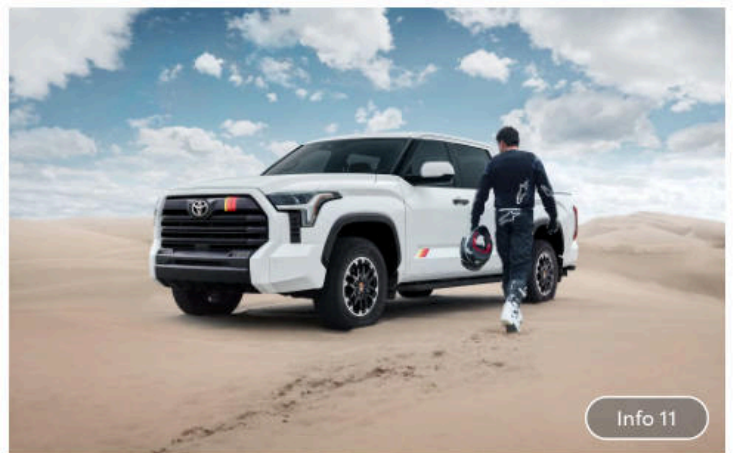
### Load-Leveling Rear Height Control Air Suspension

Available on certain grades, this system lets you choose from three manual height modes: High, for slow-speed, off-road driving or hauling heavy loads; Low, to help with loading and unloading; and Normal, for everyday driving.

TRD RALLY PACKAGE

# TRD Rally Package

Drive through the dunes in style. The iconic tri-color stripes stamped across Tundra's chiseled exterior on the TRD Rally Package look great when you ride out on off-road terrain, while also paying homage to Toyota's exhilarating Baja racing heritage.



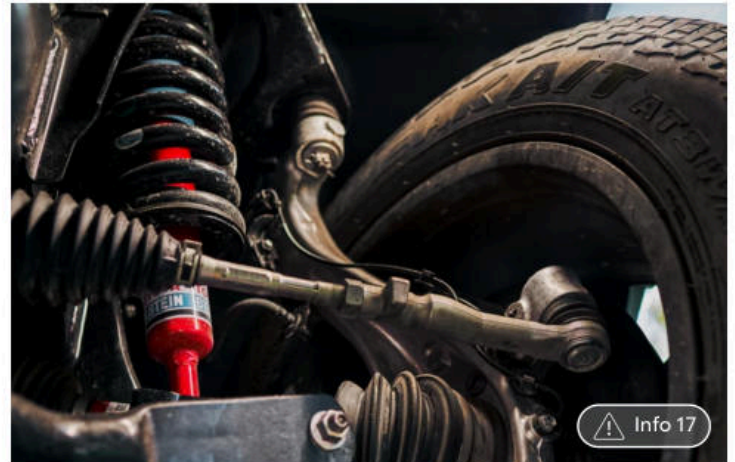
# The off-road awaits.

The Tundra TRD Family gives you more than one way to off-road. With the available TRD Off-Road Package and TRD Pro trim, Tundra's ready to work hard and play even harder.



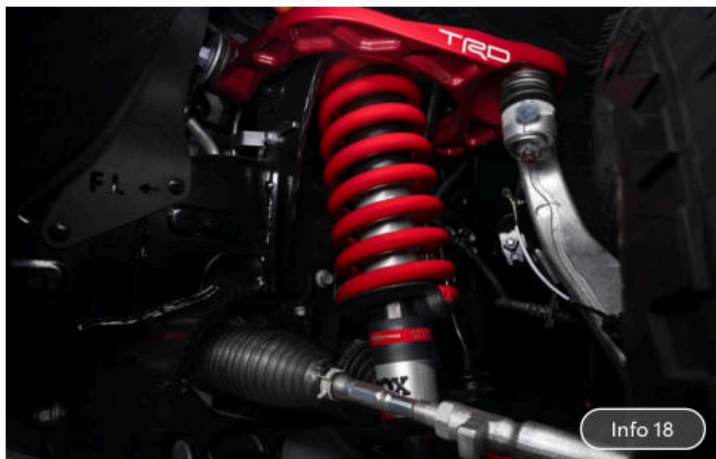
## TRD Family

Whether it's with the TRD Off-Road Package or TRD Pro grade, you'll be ready for the trail with one-of-a-kind enhancements in performance, capability and styling. TRD Off-Road Package available on SR5, Limited, Platinum and 1794 Edition.



## TRD Off-Road Suspension

Delivering consistent performance when the going gets rough, TRD Off-Road's Bilstein® <sup>12</sup> shocks help steady the course. Tundra's TRD Off-Road Package includes 18-in. alloy wheels (20-in. on Limited, Platinum and 1794 Edition) wrapped in Falken® <sup>13</sup> WILDPEAK All-Terrain tires, to help you take on rock, dirt and mud—without losing your grip.



## TRD Pro Upper Control Arm

Hit the trail with confidence. Developed and manufactured by TRD, this forged upper control arm is designed to last and withstand rugged off-road conditions. The TRD Pro upper control arm helps increase the strength of Tundra's front suspension.



## Heritage Grille With LED Light Bar

TRD Pro shows off a look that's hard to ignore. With an unmistakable heritage-inspired "TOYOTA" front grille, this rig means business. Add an integrated center LED light bar, marker lights and exterior technical-camo-pattern accents, and this truck's all-around capability is on full display.

## TRD FAMILY




 Info 19

### FOX® Off-Road Shocks

Whether you're rock-crawling or driving through the desert, TRD Pro's suspension helps deliver the optimal ride for rough terrain. 2.5-in.-diameter FOX® <sup>14</sup> Internal Bypass shocks with piggyback reservoirs hold more oil than traditional shocks, for outstanding off-road performance.



 Info 7

### BBS® Forged Wheels and Aluminum Skid Plate

TRD Pro's strong and lightweight BBS® <sup>15</sup> 18-in. forged-aluminum wheels come wrapped in Falken® <sup>13</sup> WILDPEAK All-Terrain tires, so you can confidently take on tough trails. And a high-strength aluminum TRD Pro skid plate helps protect this beast's underbelly as you adventure off the grid.

# Towing Capacity



## Built to bring more adventure.

Tundra's modern muscle delivers exceptional power and capability. When equipped with the i-FORCE MAX hybrid powertrain, Tundra has an impressive towing capacity.<sup>2</sup>

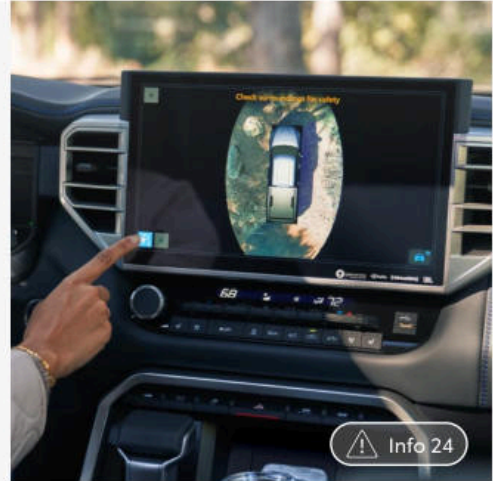


# Make a power play

## Technology

### Panoramic View Monitor

Tundra's available Panoramic View Monitor (PVM)<sup>22</sup> uses cameras on the front, sides and rear of the truck to give you a 360-degree view of what's going on outside.

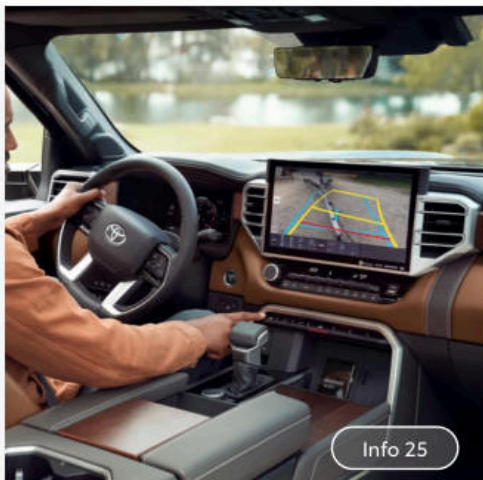


### 12.3-In. Digital Gauge Cluster

The available 12.3-in. digital gauge cluster gives you access to safety and convenience features, navigation, audio controls, off-road features, towing functions and more.

### 14-In. Multimedia Touchscreen

Get a better view of what's around you on Tundra's impressive available 14-in. audio multimedia touchscreen.



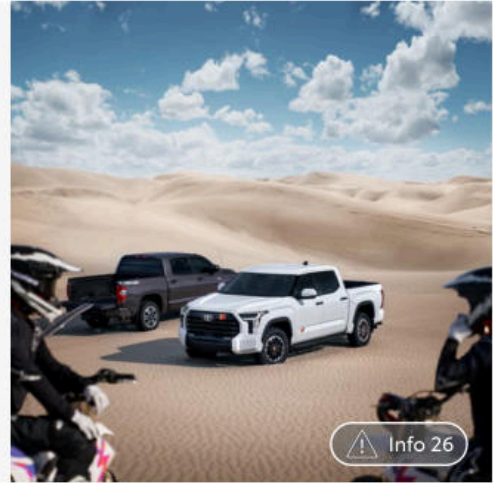
### Trailer Backup Guide With Straight Path Assist

Using sensors and cameras, Tundra's available driver-assistance technology helps keep your trailer in a straight line as you back up.<sup>23</sup>

# Design

## Lightweight Body Panels

With lightweight aluminum used throughout, and high-strength steel where it's needed most, every piece of metal was thoughtfully placed for enhanced overall efficiency, durability and safety.

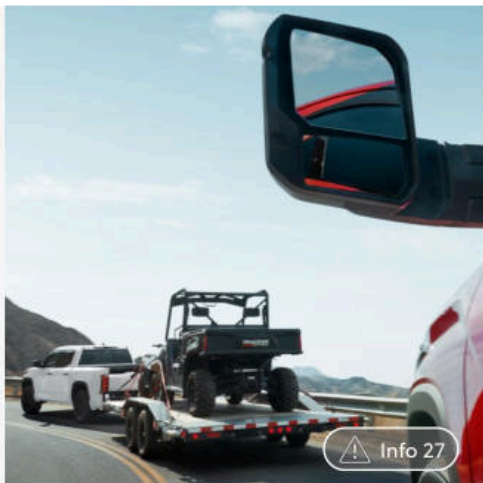


## Active Aero Front Splitter

Tundra's available active aero front splitter adapts to driving conditions, for maximum aerodynamic efficiency. When you're driving above 37 mph, the splitter automatically deploys to modify airflow.

## Boxed Steel Frame

Tundra's fully boxed, high-strength steel-ladder frame provides enhanced rigidity, capability and driving comfort, while the wide rear frame member helps improve stability and towing capability.



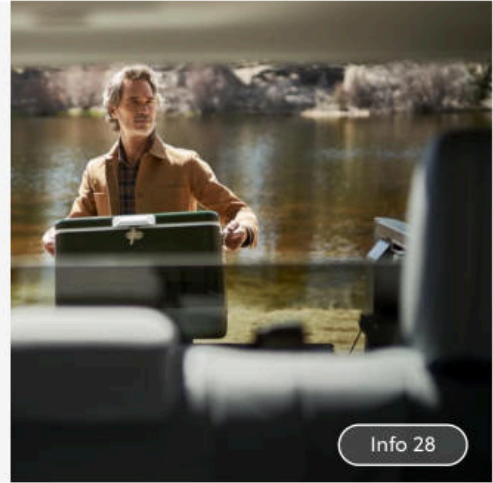
## Tow Mirrors

Available power-extending and -folding tow mirrors give you a better view of whatever's hitched up in the back.

# Interior

## Power Vertical Rear Window

Tundra CrewMax features a standard rear glass window that raises and fully lowers with the push of a button. When you're camped on the trail, this handy feature helps optimize airflow inside the cabin.



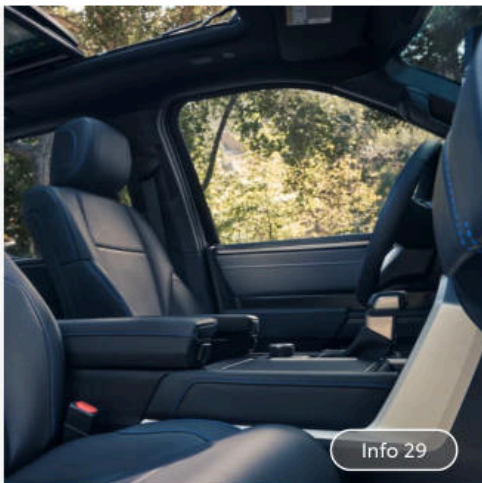
Info 28

## Panoramic Moonroof

With just the push of a button, Tundra's available panoramic moonroof opens to give you a glimpse of the big, wide world waiting to be explored.

## Heated and Ventilated Seats

Warm up on your way up the mountain. Cool down when you're under the desert sun. No matter the climate, Tundra's available heated and ventilated front and rear seats help you wander in total comfort.



Info 29

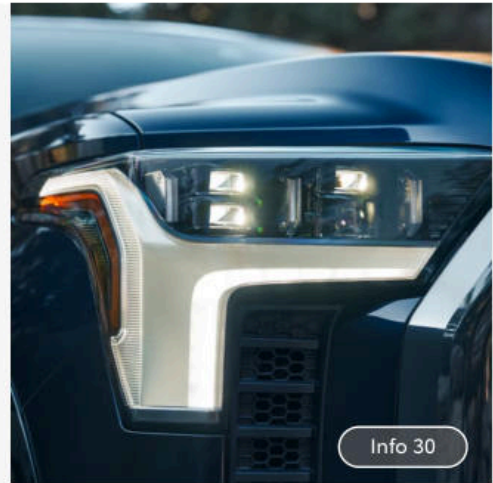
## Crafted Interior

Rugged on the outside. First class on the inside. Tundra's interior has available premium features, such as leather-trimmed soft-touch materials and massage seats—all with plenty of room for friends and gear.

# Exterior

## Premium LED Headlights

High-performance LED headlights give Tundra a striking look. And these fully LED headlights feature available dynamic sequential turn signals, Daytime Running Lights (DRL) and LED low and high beams.

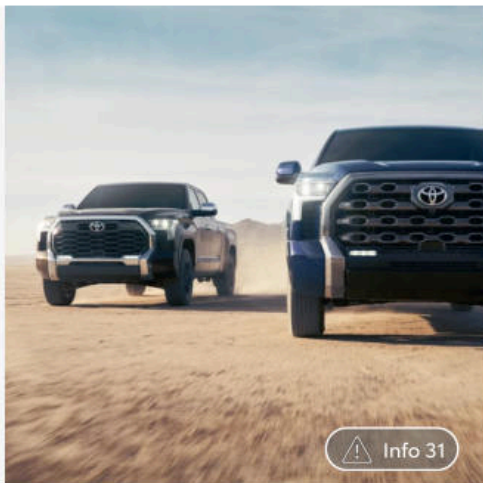


## Aggressive Styling

With a chiseled and athletic stance, Tundra's design pays homage to Toyota's daring and dependable DNA. Bulging fenders and a powerful front grille hint at the capability that lives under the hood.

## Sleek Taillights and Stamped Tailgate

Tundra's LED taillights and stamped tailgate featuring Tundra's logo form a powerful signature of force. And the available dynamic sequential turn signal taillights add a touch of premium style.



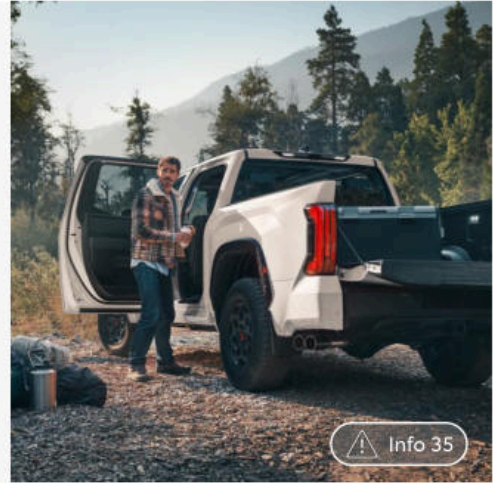
## Distinctive Platinum and 1794 Edition Styling

Platinum's bold grille sends a message that this truck is a premium recreation machine. The 1794 Edition features a distinctive 1794 logo stamped on the tailgate, adding to the unique style of Tundra's legendary exterior.

# Utility

## Bed Utility

When you're gearing up, Tundra's available deck rail system helps you strap down dirt bikes, ATVs and other toys. And the available bed camera gives you a look at your gear from inside the cabin. <sup>32</sup>

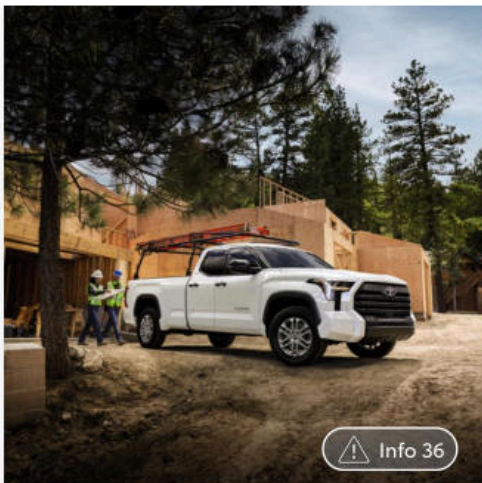


## Ultra-Durable Composite Bed

Tundra's aluminum-reinforced bed is composed of an ultra-durable Sheet-Molded Composite (SMC) surface. This resilient bed boasts greater impact strength and acts as a shield against normal wear.

## Power Tailgate With Knee-Lift Assist

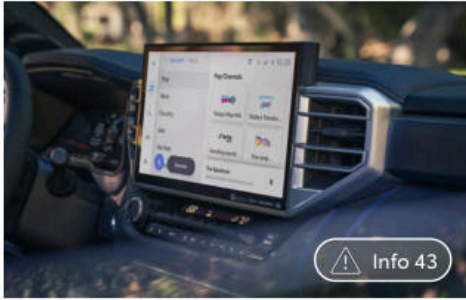
Press a button on the key fob or center console on select models to open and close the tailgate. For added convenience, you can close the tailgate hands-free by giving the tailgate a gentle lift with your knee. <sup>33 34</sup>



## Built to Work

When it's time to clock in, nothing puts in the work like Tundra. With its impressive payload capacity, dependable powertrain choices and wide variety of accessories, you'll have what you need to get the job done right.

# Audio Multimedia



## Toyota Audio Multimedia System

Outfitted with the latest tech, Tundra's Toyota Audio Multimedia system enhances every moment behind the wheel while heightening your interaction through sight, touch and voice activation, helping you stay connected to every adventure.



## JBL® Premium Audio System

Immerse yourself in quality sound with Tundra's available JBL®<sup>37</sup> Premium Audio system. A 12-speaker, 1200-watt audio system equipped with a subwoofer and amplifier, it provides phenomenal sound that amplifies every drive.



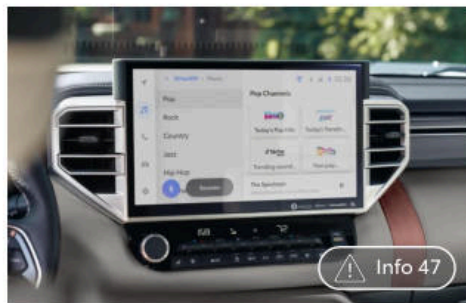
## Wireless Apple CarPlay®

Bring along a familiar interface. With Tundra's wireless Apple CarPlay® compatibility,<sup>38</sup> you can use your compatible iPhone®<sup>39</sup> with the multimedia system to get directions, make calls, send and receive messages and listen to music, all while staying focused behind the wheel.



## Wireless Android Auto™

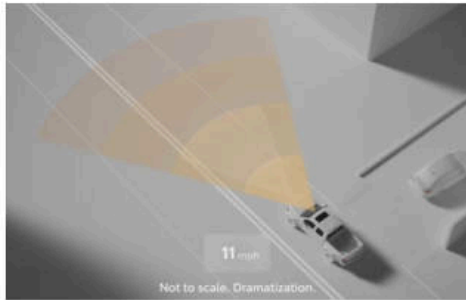
Stay connected on the road. By pairing your compatible Android™<sup>40</sup> phone with the audio multimedia system, Android Auto™<sup>41</sup> compatibility lets you get real-time traffic alerts, make and receive phone calls, listen to your favorite soundtrack, and more.



## SiriusXM® 3-Month Trial Subscription

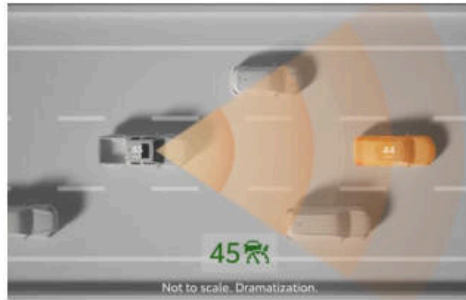
SiriusXM®<sup>42</sup> has premium entertainment that you won't hear anyplace else. With a 3-month trial, you get 425+ channels, including 165+ channels in your vehicle, to enjoy ad-free music, plus sports, news, comedy and more. Experience even more on the SiriusXM® app, featuring expertly curated podcasts, Xtra channels of music, Artist Stations, SiriusXM® video and more.

# Toyota Safety Sense™ 2.5 <sup>48</sup>



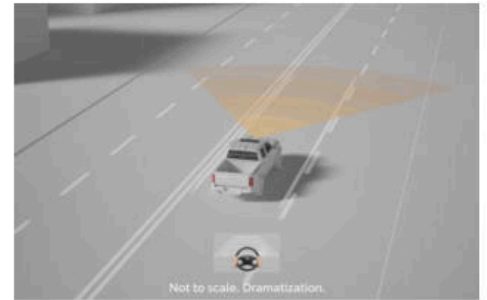
## Pre-Collision System With Pedestrian Detection

PCS w/PD <sup>49</sup> can alert you to potential collisions and may automatically brake.



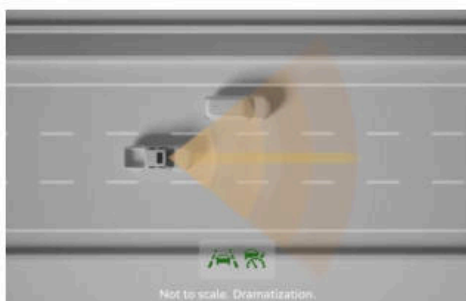
## Full-Speed Range Dynamic Radar Cruise Control

DRCC <sup>50</sup> helps maintain a preset distance from the vehicle ahead of you, from highway speeds down to a full stop.



## Lane Departure Alert With Steering Assist

LDA w/SA <sup>51</sup> may alert you to inadvertent lane departures and make minor steering corrections to help keep you in your lane.



## Lane Tracing Assist

LTA <sup>52</sup> helps you center the vehicle within its lane while DRCC <sup>53</sup> is active.



## Road Sign Assist

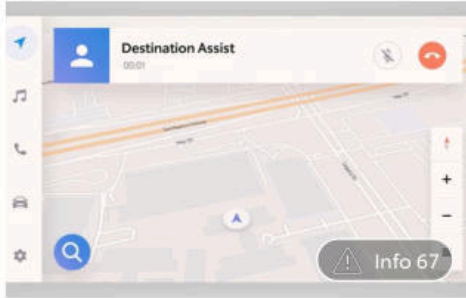
RSA <sup>54</sup> can recognize certain road signs and display them to you inside the vehicle.



## Automatic High Beams

AHB <sup>55</sup> can automatically toggle between high and low beams based on the vehicle's surroundings.

# Connected Services



## Drive Connect

With an active Drive Connect trial,<sup>56</sup> Cloud Navigation<sup>57</sup> and Intelligent Assistant<sup>58</sup> features help you find where you need to be, while Destination Assist<sup>59</sup> allows you to talk to a live agent as they help you find your destination's coordinates and offer directions on how to get there. 1-year trial subscription included on select grades. 4G network dependent.



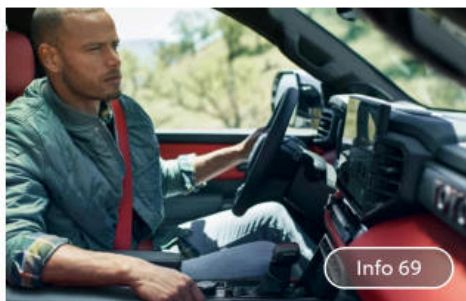
## Remote Connect

Tundra is up to speed with the latest tech. With an active Remote Connect trial or subscription,<sup>60</sup> you can start the engine, lock/unlock doors, and locate your vehicle using the Toyota app<sup>61</sup> through your compatible smartphone or smartwatch. 1-year trial included. 4G network dependent.



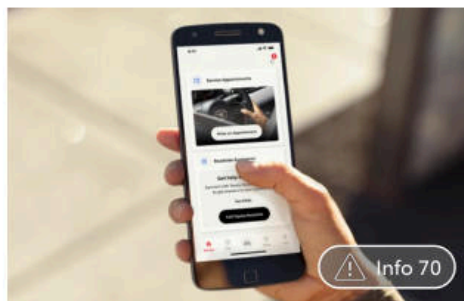
## Wi-Fi Connect

Turn Tundra into a hotspot. With an active Wi-Fi Connect trial or subscription,<sup>62</sup> you can easily connect up to five devices. And, depending on your existing mobile provider, you can add the Wi-Fi Connect subscription to your current mobile plan. We'll even include a 1-month or 3-GB trial to get you started. 4G network dependent.



## Safety Connect®

Connect to our 24/7 response center in case of an accident or emergency with the press of a button.<sup>63</sup> You also get 24/7 Roadside Assistance<sup>64</sup> and Stolen Vehicle Locator<sup>65</sup> to give you peace of mind that help is on the way. 5-year-minimum trial included. 4G network dependent.



## Service Connect

Stay up to date with your Tundra's information, such as status and alerts, maintenance reminders and more.<sup>66</sup> It's a convenient way to help make sure your Tundra is running at its best. 5-year-minimum trial subscription included. 4G network dependent.

# Powerfully dynamic.



## i-FORCE Gas Powertrain

i-FORCE turbocharged vehicles use a gasoline engine with twin turbochargers that boost power, giving you quick acceleration and strong performance.

## i-FORCE MAX Hybrid Powertrain

i-FORCE MAX turbocharged hybrid vehicles combine a turbocharged gasoline engine with an electric motor, for added power.





## SR

Available in: **CrewMax** ✓ **Double Cab** ✓

### Mechanical Features

- ✓ i-FORCE 3.4L Twin-Turbo V6; 358 hp @ 5200 rpm; 406 lb.-ft. @ 2000 rpm
- ✓ Fully boxed high-strength steel ladder frame
- ✓ Independent double-wishbone front suspension; coil spring multi-link rear suspension

### Exterior Features

- ✓ 8.1-ft. Long Bed
- ✓ 6.5-ft. Standard Bed
- ✓ LED taillights
- ✓ 18-in. styled-steel wheels
- ✓ Aluminum-reinforced composite bed construction
- ✓ LED headlights with Daytime Running Lights (DRL), auto on/off feature, and manual leveling adjustment
- ✓ "TUNDRA" stamped easy lower and lift tailgate <sup>34</sup>

### Interior Features

- ✓ Combination meter with analog gauges and 4.2-in. color digital gauge cluster with fuel economy, Driver Assist, vehicle/trip information, and warning messages
- ✓ Power vertical rear window with defogger and privacy glass
- ✓ Overhead console with rear window control, sunglasses storage and Safety Connect® <sup>63</sup>
- ✓ Smart Key System with Push Button Start
- ✓ Power horizontal rear window with defogger and privacy glass
- ✓ Backup camera <sup>72</sup> with projected path
- ✓ Fabric-trimmed seats; 4-way manual adjustable driver and front passenger seats

### Audio Multimedia

- ✓ 8-in. touchscreen audio multimedia
- ✓ Android Auto™ <sup>41</sup> & Apple CarPlay® <sup>38</sup> compatibility
- ✓ 9-speaker audio system

### Connected Services

- ✓ Remote Connect <sup>60</sup>
- ✓ Wi-Fi Connect <sup>62</sup>
- ✓ Drive Connect <sup>56</sup>
- ✓ Service Connect <sup>66</sup>

### Safety/Convenience

- ✓ Toyota Safety Sense™ 2.5 (TSS 2.5) <sup>48</sup>
- ✓ Eight total airbags, including driver and passenger side, knee and curtain airbags <sup>73</sup>
- ✓ Star Safety System™



## SR5

Available in: **CrewMax** ✓ **Double Cab** ✓

### Mechanical Features

- ✓ i-FORCE 3.4L Twin-Turbo V6; 389 hp @ 5200 rpm; 479 lb.-ft. @ 2400 rpm
- ✓ Fully boxed high-strength steel ladder frame
- ✓ Independent double-wishbone front suspension; coil spring multi-link rear suspension
- ✓ Active aero front spoiler

### Exterior Features

- ✓ 8.1-ft. Long Bed
- ✓ 6.5-ft. Standard Bed
- ✓ LED taillights
- ✓ 18-in. silver-painted alloy wheels
- ✓ LED headlights with Daytime Running Lights (DRL), auto on/off feature, and manual leveling adjustment
- ✓ Aluminum-reinforced composite bed construction

### Interior Features

- ✓ Combination meter with analog gauges and 4.2-in. color digital gauge cluster with fuel economy, Driver Assist, vehicle/trip information, and warning messages
- ✓ Power vertical rear window with defogger and privacy glass
- ✓ Overhead console with rear window control, sunglasses storage and Safety Connect® <sup>63</sup>
- ✓ Fabric-trimmed seats
- ✓ Power horizontal rear window with defogger and privacy glass
- ✓ Smart Key System with Push Button Start

### Audio Multimedia

- ✓ 8-in. touchscreen audio multimedia
- ✓ 6-speaker audio system
- ✓ Android Auto™ <sup>41</sup> & Apple CarPlay® <sup>38</sup> compatibility

### Connected Services

- ✓ Remote Connect <sup>60</sup>
- ✓ Wi-Fi Connect <sup>62</sup>
- ✓ Drive Connect <sup>56</sup>
- ✓ Service Connect <sup>66</sup>

### Safety/Convenience

- ✓ Toyota Safety Sense™ 2.5 (TSS 2.5) <sup>48</sup>
- ✓ Eight total airbags, including driver and passenger side, knee and curtain airbags <sup>73</sup>
- ✓ Star Safety System™

### Options and Packages

- ✓ TRD Rally Package
- ✓ Advanced Technology Package
- ✓ Rear Air Suspension
- ✓ SR5 PVM + BSM Tow Mirrors



## Limited

Available in: **CrewMax** ✓ **Double Cab**

### Mechanical Features

- ✓ i-FORCE 3.4L Twin-Turbo V6; 389 hp @ 5200 rpm; 479 lb.-ft. @ 2400 rpm
- ✓ Fully boxed high-strength steel ladder frame
- ✓ Independent double-wishbone front suspension; coil spring multi-link rear suspension
- ✓ Active aero front spoiler

### Exterior Features

- ✓ Power tailgate-release switch located in taillight, key fob and dash with knee-lift assist <sup>34</sup>
- ✓ 6.5-ft. Standard Bed
- ✓ LED taillights
- ✓ 20-in. gray-painted and machined-finish alloy wheels
- ✓ LED headlights with Daytime Running Lights (DRL), auto on/off feature, and manual leveling adjustment

### Interior Features

- ✓ Heated and ventilated front seats
- ✓ 12.3-in. digital meter with selectable gauge display screens and fuel economy, Driver Assist, vehicle/trip information, and warning messages
- ✓ Power vertical rear window with defogger and privacy glass
- ✓ Overhead console with rear window control, sunglasses storage and Safety Connect® <sup>63</sup>
- ✓ Smart Key System with Push Button Start

### Audio Multimedia

- ✓ 14-in. touchscreen audio multimedia
- ✓ 9-speaker audio system
- ✓ Android Auto™ <sup>41</sup> & Apple CarPlay® <sup>38</sup> compatibility

### Connected Services

- ✓ Remote Connect <sup>60</sup>
- ✓ Wi-Fi Connect <sup>62</sup>
- ✓ Drive Connect <sup>56</sup>
- ✓ Service Connect <sup>66</sup>

### Safety/Convenience

- ✓ Toyota Safety Sense™ 2.5 (TSS 2.5) <sup>48</sup>
- ✓ Blind Spot Monitor (BSM) <sup>74</sup> with Rear Cross-Traffic Alert (RCTA) <sup>75</sup> and Trailer Merge Warning
- ✓ Eight total airbags, including driver and passenger side, knee and curtain airbags <sup>73</sup>
- ✓ Star Safety System™

### Options and Packages

- ✓ TRD Off-Road Package
- ✓ Limited Premium Package
- ✓ Nightshade Package
- ✓ Rear Air Suspension
- ✓ PVM + BSM Tow Mirrors



## Platinum

Available in: **CrewMax** ✓ Double Cab

### Mechanical Features

- ✓ i-FORCE 3.4L Twin-Turbo V6; 389 hp @ 5200 rpm; 479 lb.-ft. @ 2400 rpm
- ✓ Fully boxed high-strength steel ladder frame
- ✓ Trailer Backup Guide system with Straight Path Assist (SPA) <sup>23</sup>
- ✓ Independent double-wishbone front suspension; coil spring multi-link rear suspension

### Exterior Features

- ✓ Premium LED headlights with chrome trim, LED Daytime Running Lights (DRL), sequential turn signals, auto on/off feature, and automatic leveling adjustment
- ✓ Power tailgate-release switch located in taillight, key fob and dash with knee-lift assist <sup>34</sup>
- ✓ 6.5-ft. Standard Bed
- ✓ Premium LED taillights with sequential turn signals
- ✓ 20-in. dark-gray-painted alloy wheels
- ✓ Aluminum-reinforced composite bed construction

### Interior Features

- ✓ Panoramic View Monitor (PVM) <sup>22</sup> with cameras
- ✓ Heated and ventilated front and rear seats
- ✓ 12.3-in. digital meter with selectable gauge display screens and fuel economy, Driver Assist, vehicle/trip information, and warning messages
- ✓ Power vertical rear window with defogger and privacy glass
- ✓ Overhead console with rear window control, sunglasses storage and Safety Connect® <sup>63</sup>
- ✓ Smart Key System with Push Button Start

### Audio Multimedia

- ✓ 14-in. touchscreen audio multimedia
- ✓ 12-speaker JBL® <sup>37</sup> Premium Audio including subwoofer and amplifier
- ✓ Android Auto™ <sup>41</sup> & Apple CarPlay® <sup>38</sup> compatibility

### Connected Services

- ✓ Remote Connect <sup>60</sup>
- ✓ Wi-Fi Connect <sup>62</sup>
- ✓ Drive Connect <sup>56</sup>
- ✓ Service Connect <sup>66</sup>

### Safety/Convenience

- ✓ Toyota Safety Sense™ 2.5 (TSS 2.5) <sup>48</sup>
- ✓ Blind Spot Monitor (BSM) <sup>74</sup> with Rear Cross-Traffic Alert (RCTA) <sup>75</sup> and Trailer Merge Warning
- ✓ Eight total airbags, including driver and passenger side, knee and curtain airbags <sup>73</sup>
- ✓ Star Safety System™

### Options and Packages

- ✓ TRD Off-Road Package
- ✓ Load-Leveling Rear Height Control Air Suspension



## 1794 Edition

Available in: **CrewMax** ✓ Double Cab

### Mechanical Features

- ✓ i-FORCE 3.4L Twin-Turbo V6; 389 hp @ 5200 rpm; 479 lb.-ft. @ 2400 rpm
- ✓ Fully boxed high-strength steel ladder frame
- ✓ Trailer Backup Guide system with Straight Path Assist (SPA) <sup>23</sup>
- ✓ Independent double-wishbone front suspension; coil spring multi-link rear suspension

### Exterior Features

- ✓ Premium LED headlights with chrome trim, LED Daytime Running Lights (DRL), sequential turn signals, auto on/off feature, and automatic leveling adjustment
- ✓ Power tailgate-release switch located in taillight, key fob and dash with knee-lift assist <sup>34</sup>
- ✓ 6.5-ft. Standard Bed
- ✓ Premium LED taillights with sequential turn signals
- ✓ 20-in. machined-finish alloy wheels

### Interior Features

- ✓ Panoramic View Monitor (PVM) <sup>22</sup> with cameras
- ✓ Heated and ventilated front and rear seats
- ✓ 12.3-in. digital meter with selectable gauge display screens and fuel economy, Driver Assist, vehicle/trip information, and warning messages
- ✓ Power vertical rear window with defogger and privacy glass
- ✓ Overhead console with rear window control, sunglasses storage and Safety Connect® <sup>63</sup>

### Audio Multimedia

- ✓ 14-in. touchscreen audio multimedia
- ✓ 12-speaker JBL® <sup>37</sup> Premium Audio including subwoofer and amplifier
- ✓ Android Auto™ <sup>41</sup> & Apple CarPlay® <sup>38</sup> compatibility

### Connected Services

- ✓ Remote Connect <sup>60</sup>
- ✓ Wi-Fi Connect <sup>62</sup>
- ✓ Drive Connect <sup>56</sup>
- ✓ Service Connect <sup>66</sup>

### Safety/Convenience

- ✓ Toyota Safety Sense™ 2.5 (TSS 2.5) <sup>48</sup>
- ✓ Blind Spot Monitor (BSM) <sup>74</sup> with Rear Cross-Traffic Alert (RCTA) <sup>75</sup> and Trailer Merge Warning
- ✓ Eight total airbags, including driver and passenger side, knee and curtain airbags <sup>73</sup>
- ✓ Star Safety System™

### Options and Packages

- ✓ TRD Off-Road Package
- ✓ Load-Leveling Rear Height Control Air Suspension



## Limited i-FORCE MAX

Available in: **CrewMax** ✓ Double Cab

### Mechanical Features

- ✓ i-FORCE MAX 3.4L Twin-Turbo V6 Hybrid; 437 hp @ 5200 rpm; 583 lb.-ft. @ 2400 rpm
- ✓ Electric motor torque: 184 lb.-ft. (250 N·m)
- ✓ Fully boxed high-strength steel ladder frame
- ✓ Independent double-wishbone front suspension; coil spring multi-link rear suspension

### Exterior Features

- ✓ Power tailgate-release switch located in taillight, key fob and dash with knee-lift assist <sup>34</sup>
- ✓ 6.5-ft. Standard Bed
- ✓ LED taillights
- ✓ 20-in. gray-painted and machined-finish alloy wheels
- ✓ LED headlights with Daytime Running Lights (DRL), auto on/off feature, and manual leveling adjustment
- ✓ Aluminum-reinforced composite bed construction

### Interior Features

- ✓ Heated and ventilated front seats
- ✓ 12.3-in. digital meter with selectable gauge display screens and fuel economy, Driver Assist, vehicle/trip information, and warning messages
- ✓ Power vertical rear window with defogger and privacy glass
- ✓ Overhead console with rear window control, sunglasses storage and Safety Connect® <sup>63</sup>
- ✓ Smart Key System with Push Button Start
- ✓ Leather-wrapped manual tilt/telescopic steering wheel with phone, audio, display/infotainment, and Driver Assist controls

### Audio Multimedia

- ✓ 14-in. touchscreen audio multimedia
- ✓ 9-speaker audio system
- ✓ Android Auto™ <sup>41</sup> & Apple CarPlay® <sup>38</sup> compatibility

### Connected Services

- ✓ Remote Connect <sup>60</sup>
- ✓ Wi-Fi Connect <sup>62</sup>
- ✓ Drive Connect <sup>56</sup>
- ✓ Service Connect <sup>66</sup>

### Safety/Convenience

- ✓ Toyota Safety Sense™ 2.5 (TSS 2.5) <sup>48</sup>
- ✓ Blind Spot Monitor (BSM) <sup>74</sup> with Rear Cross-Traffic Alert (RCTA) <sup>75</sup> and Trailer Merge Warning
- ✓ Eight total airbags, including driver and passenger side, knee and curtain airbags <sup>73</sup>
- ✓ Star Safety System™

### Options and Packages

- ✓ TRD Off-Road Package
- ✓ Limited Premium Package
- ✓ Nightshade Package
- ✓ Rear Air Suspension
- ✓ PVM + BSM Tow Mirrors



## Platinum i-FORCE MAX

Available in: **CrewMax** ✓ Double Cab

### Mechanical Features

- ✓ i-FORCE MAX 3.4L Twin-Turbo V6 Hybrid; 437 hp @ 5200 rpm; 583 lb.-ft. @ 2400 rpm
- ✓ Electric motor torque: 184 lb.-ft. (250 N·m)
- ✓ Fully boxed high-strength steel ladder frame
- ✓ Independent double-wishbone front suspension; coil spring multi-link rear suspension

### Exterior Features

- ✓ Premium LED headlights with chrome trim, LED Daytime Running Lights (DRL), sequential turn signals, auto on/off feature, and automatic leveling adjustment
- ✓ Power tailgate-release switch located in taillight, key fob and dash with knee-lift assist <sup>34</sup>
- ✓ 6.5-ft. Standard Bed
- ✓ Premium LED taillights with sequential turn signals
- ✓ 20-in. dark-gray-painted alloy wheels
- ✓ Aluminum-reinforced composite bed construction

### Interior Features

- ✓ Panoramic View Monitor (PVM) <sup>22</sup> with cameras
- ✓ Heated and ventilated front and rear seats
- ✓ 12.3-in. digital meter with selectable gauge display screens and fuel economy, Driver Assist, vehicle/trip information, and warning messages
- ✓ Power vertical rear window with defogger and privacy glass
- ✓ Overhead console with rear window control, sunglasses storage and Safety Connect® <sup>63</sup>
- ✓ Smart Key System with Push Button Start

### Audio Multimedia

- ✓ 14-in. touchscreen audio multimedia
- ✓ 12-speaker JBL® <sup>37</sup> Premium Audio including subwoofer and amplifier
- ✓ Android Auto™ <sup>41</sup> & Apple CarPlay® <sup>38</sup> compatibility

### Connected Services

- ✓ Remote Connect <sup>60</sup>
- ✓ Wi-Fi Connect <sup>62</sup>
- ✓ Drive Connect <sup>56</sup>
- ✓ Service Connect <sup>66</sup>

### Safety/Convenience

- ✓ Toyota Safety Sense™ 2.5 (TSS 2.5) <sup>48</sup>
- ✓ Blind Spot Monitor (BSM) <sup>74</sup> with Rear Cross-Traffic Alert (RCTA) <sup>75</sup> and Trailer Merge Warning
- ✓ Eight total airbags, including driver and passenger side, knee and curtain airbags <sup>73</sup>
- ✓ Star Safety System™

### Options and Packages

- ✓ TRD Off-Road Package
- ✓ Load-Leveling Rear Height Control Air Suspension



## 1794 Edition i-FORCE MAX

Available in: **CrewMax** ✓ Double Cab

### Mechanical Features

- ✓ i-FORCE MAX 3.4L Twin-Turbo V6 Hybrid; 437 hp @ 5200 rpm; 583 lb.-ft. @ 2400 rpm
- ✓ Electric motor torque: 184 lb.-ft. (250 N·m)
- ✓ Fully boxed high-strength steel ladder frame
- ✓ Independent double-wishbone front suspension; coil spring multi-link rear suspension

### Exterior Features

- ✓ Premium LED headlights with chrome trim, LED Daytime Running Lights (DRL), sequential turn signals, auto on/off feature, and automatic leveling adjustment
- ✓ Power tailgate-release switch located in taillight, key fob and dash with knee-lift assist <sup>34</sup>
- ✓ 6.5-ft. Standard Bed
- ✓ Premium LED taillights with sequential turn signals
- ✓ 20-in. machined-finish alloy wheels
- ✓ Chrome grille and exterior accents

### Interior Features

- ✓ Panoramic View Monitor (PVM) <sup>22</sup> with cameras
- ✓ Heated and ventilated front and rear seats
- ✓ 12.3-in. digital meter with selectable gauge display screens and fuel economy, Driver Assist, vehicle/trip information, and warning messages
- ✓ Power vertical rear window with defogger and privacy glass
- ✓ Overhead console with rear window control, sunglasses storage and Safety Connect® <sup>63</sup>
- ✓ Smart Key System with Push Button Start

### Audio Multimedia

- ✓ 14-in. touchscreen audio multimedia
- ✓ 12-speaker JBL® <sup>37</sup> Premium Audio including subwoofer and amplifier
- ✓ Android Auto™ <sup>41</sup> & Apple CarPlay® <sup>38</sup> compatibility

### Connected Services

- ✓ Remote Connect <sup>60</sup>
- ✓ Wi-Fi Connect <sup>62</sup>
- ✓ Drive Connect <sup>56</sup>
- ✓ Service Connect <sup>66</sup>

### Safety/Convenience

- ✓ Toyota Safety Sense™ 2.5 (TSS 2.5) <sup>48</sup>
- ✓ Blind Spot Monitor (BSM) <sup>74</sup> with Rear Cross-Traffic Alert (RCTA) <sup>75</sup> and Trailer Merge Warning
- ✓ Eight total airbags, including driver and passenger side, knee and curtain airbags <sup>73</sup>
- ✓ Star Safety System™

### Options and Packages

- ✓ TRD Off-Road Package
- ✓ Load-Leveling Rear Height Control Air Suspension



## TRD Pro

Available in: **CrewMax** ✓ Double Cab

### Mechanical Features

- ✓ i-FORCE MAX 3.4L Twin-Turbo V6 Hybrid; 437 hp @ 5200 rpm; 583 lb.-ft. @ 2400 rpm
- ✓ Multi-Terrain Select (MTS), Crawl Control (CRAWL)<sup>3</sup> and Downhill Assist Control (DAC)<sup>76</sup>
- ✓ Electric motor torque: 184 lb.-ft. (250 N•m)
- ✓ Electronically controlled locking rear differential

### Exterior Features

- ✓ Black "TOYOTA" heritage grille with integrated light bar, amber marker lights, and color-keyed surround
- ✓ Premium LED headlights with black trim, LED Daytime Running Lights (DRL), sequential turn signals, and automatic leveling adjustment
- ✓ TRD Pro LED marker lights
- ✓ Power tailgate-release switch located in taillight, key fob and dash with knee-lift assist<sup>34</sup>
- ✓ Premium LED taillights with sequential turn signals

### Interior Features

- ✓ Heated and ventilated front seats
- ✓ 12.3-in. digital meter with selectable gauge display screens and fuel economy, Driver Assist, vehicle/trip information, and warning messages
- ✓ Power vertical rear window with defogger and privacy glass
- ✓ Overhead console with rear window control, sunglasses storage and Safety Connect<sup>63</sup>
- ✓ Smart Key System with Push Button Start

### Audio Multimedia

- ✓ 14-in. touchscreen audio multimedia
- ✓ 12-speaker JBL<sup>®</sup><sup>37</sup> Premium Audio including subwoofer and amplifier
- ✓ Android Auto<sup>™</sup><sup>41</sup> & Apple CarPlay<sup>®</sup><sup>38</sup> compatibility

### Connected Services

- ✓ Remote Connect<sup>60</sup>
- ✓ Wi-Fi Connect<sup>62</sup>
- ✓ Drive Connect<sup>56</sup>
- ✓ Service Connect<sup>66</sup>

### Safety/Convenience

- ✓ Toyota Safety Sense<sup>™</sup> 2.5 (TSS 2.5)<sup>48</sup>
- ✓ Blind Spot Monitor (BSM)<sup>74</sup> with Rear Cross-Traffic Alert (RCTA)<sup>75</sup> and Trailer Merge Warning
- ✓ Eight total airbags, including driver and passenger side, knee and curtain airbags<sup>73</sup>
- ✓ Star Safety System<sup>™</sup>

### Options and Packages

- ✓ Tow Tech Package With Wireless Trailer Camera System
- ✓ TRD Pro With Tow Mirrors Grade Package
- ✓ IsoDynamic Seat



## Capstone

Available in: **CrewMax** ✓ Double Cab

### Mechanical Features

- ✓ i-FORCE MAX 3.4L Twin-Turbo V6 Hybrid; 437 hp @ 5200 rpm; 583 lb.-ft. @ 2400 rpm
- ✓ Electric motor torque: 184 lb.-ft. (250 N•m)
- ✓ Adaptive Variable Suspension (AVS) and Load-leveling Rear Height Control Air Suspension
- ✓ Fully boxed high-strength steel ladder frame

### Exterior Features

- ✓ Premium LED headlights with chrome trim, LED Daytime Running Lights (DRL), sequential turn signals, auto on/off feature, and automatic leveling adjustment
- ✓ Power tailgate-release switch located in taillight, key fob and dash with knee-lift assist<sup>34</sup>
- ✓ Premium LED taillights with sequential turn signals
- ✓ 22-in. dark chrome and machined-finish alloy wheels
- ✓ Power running boards and BedStep<sup>®</sup><sup>77</sup>

### Interior Features

- ✓ Panoramic View Monitor (PVM)<sup>22</sup> with cameras
- ✓ Heated and ventilated front and rear seats
- ✓ 12.3-in. digital meter with selectable gauge display screens and fuel economy, Driver Assist, vehicle/trip information, and warning messages
- ✓ Power vertical rear window with defogger and privacy glass
- ✓ Overhead console with rear window control, sunglasses storage and Safety Connect<sup>63</sup>

### Audio Multimedia

- ✓ 14-in. touchscreen audio multimedia
- ✓ 12-speaker JBL<sup>®</sup><sup>37</sup> Premium Audio including subwoofer and amplifier
- ✓ Android Auto<sup>™</sup><sup>41</sup> & Apple CarPlay<sup>®</sup><sup>38</sup> compatibility

### Connected Services

- ✓ Remote Connect<sup>60</sup>
- ✓ Wi-Fi Connect<sup>62</sup>
- ✓ Drive Connect<sup>56</sup>
- ✓ Service Connect<sup>66</sup>

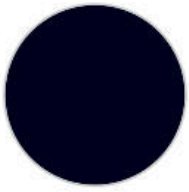
### Safety/Convenience

- ✓ Toyota Safety Sense<sup>™</sup> 2.5 (TSS 2.5)<sup>48</sup>
- ✓ Blind Spot Monitor (BSM)<sup>74</sup> with Rear Cross-Traffic Alert (RCTA)<sup>75</sup> and Trailer Merge Warning
- ✓ Eight total airbags, including driver and passenger side, knee and curtain airbags<sup>73</sup>
- ✓ Star Safety System<sup>™</sup>

### Options and Packages

- ✓ Load-Leveling Rear Height Control Air Suspension
- ✓ Tow Tech Package With Wireless Trailer Camera System
- ✓ PVM + BSM Tow Mirrors

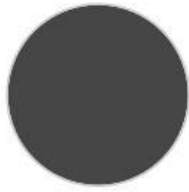
**EXTERIOR**



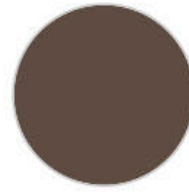
Midnight Black  
Metallic



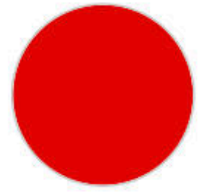
Blueprint



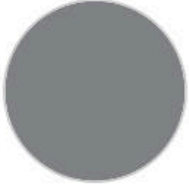
Magnetic Gray  
Metallic



Mudbath



Supersonic Red <sup>78</sup>



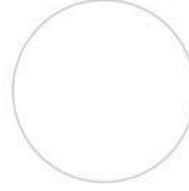
Celestial Silver  
Metallic



Lunar Rock



Wind Chill Pearl <sup>78</sup>



Ice Cap

**INTERIOR**



Black Fabric



Black SofTex<sup>®</sup>-  
trimmed <sup>79</sup>



Cockpit Red  
SofTex<sup>®</sup>-trimmed <sup>79</sup>



Heritage Black  
SofTex<sup>®</sup>-trimmed <sup>79</sup>



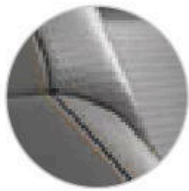
Black Leather-  
trimmed



Boulder Leather-  
trimmed



Saddle Tan  
Leather-trimmed



Shale Premium  
Textured Leather-  
trimmed

# TUNDRA FEATURES

S=Standard

A=Available

Exterior	SR	SR5	Limited	Limited i-FORCE MAX	Platinum	Platinum i-FORCE MAX	1794 Edition	1794 Edition i-FORCE MAX	TRD Pro	Capstone
18-in. silver-painted alloy wheels		S								
18-in. styled-steel wheels	S									
18-in. TRD Off-Road black-painted and machined-finish alloy wheels		A								
18-in. TRD Pro matte-black forged-aluminum BBS® wheels with TRD center caps									S	
18-in. TRD Off-Road black-painted and machined-finish alloy wheels with T-O-Y-O-T-A tri-color center caps		A								
20-in. black alloy wheels		A	A	A						
20-in. dark-gray-painted alloy wheels					S	S				
20-in. gray-painted and machined-finish alloy wheels			S	S						
20-in. machined-finish alloy wheels							S	S		
20-in. TRD Off-Road matte-black alloy wheels with TRD center caps			A	A	A	A	A	A		
22-in. dark chrome and machined-finish alloy wheels										S
TRD aluminum front skid plate with red-painted front coil springs and stabilizer bar									S	
Front door handles with touch-sensor lock/unlock feature	S	S	S	S	S	S	S	S	S	S
LED fog lights		S	S	S	S	S	S	S	S	S
LED headlights with Daytime Running Lights (DRL), auto on/off feature, and manual leveling adjustment	S	S	S	S						
LED taillights	S	S	S	S						
Premium LED headlights with black trim, LED Daytime Running Lights (DRL), sequential turn signals, and automatic leveling adjustment									S	
Premium LED headlights with chrome trim, LED Daytime Running Lights (DRL), sequential turn signals, auto on/off feature, and automatic leveling adjustment			A	A	S	S	S	S		S
Premium LED taillights with sequential turn signals					S	S	S	S	S	S
TRD Pro LED light bar									S	
TRD Pro LED marker lights									S	
Black "TOYOTA" heritage grille with integrated light bar, amber marker lights, and color-keyed surround									S	
Black horizontal-bar grille with black surround	S									
Black horizontal-bar grille with color-keyed surround		S								
Black horizontal-bar grille with color-keyed surround and tri-color decal (TRD Rally Package)		A								
Black TRD honeycomb-style grille with chrome surround (TRD Off-Road Package)		A					A	A		
Black TRD honeycomb-style grille with color-keyed surround (TRD Off-Road Package)			A	A						
Chrome-accented mesh grille with chrome surround							S	S		
Dark-chrome-accented mesh grille with color-keyed surround										S
Dark-chrome-accented mesh grille with dark chrome surround					S	S				
Gray-painted horizontal-bar grille with color-keyed grille surround			A	A						

## TUNDRA FEATURES

S=Standard

A=Available

Exterior (continued)	SR	SR5	Limited	Limited i-FORCE MAX	Platinum	Platinum i-FORCE MAX	1794 Edition	1794 Edition i-FORCE MAX	TRD Pro	Capstone
Gray-painted horizontal-bar grille with satin chrome surround			S	S						
Gray-painted TRD honeycomb-style grille with chrome surround (TRD Off-Road Package)							A	A		
Gray-painted TRD honeycomb-style grille with dark chrome surround (TRD Off-Road Package)					A	A				
Rain-sensing washer-linked variable intermittent windshield wipers					S	S	S	S		S
Washer-linked variable intermittent windshield wipers	S	S	S	S					S	
Black heated power auto anti-glare outside tow mirrors with turn signal and blind spot warning indicators, and power-folding and power-extend features		A	A	A	A	A	A	A	A	A
Heated power outside mirrors	S	S								
Heated power outside mirrors with turn signal and blind spot warning indicators, and power-folding and reverse tilt-down features			S	S	S	S	S	S	S	S
5.5-ft. Short Bed	S	S	S	S	S	S	S	S	S	S
6.5-ft. Standard Bed	S	S	S	S	S	S	S	S		
8.1-ft. Long Bed	S	S								
120V/400W bed-mounted AC power outlet and LED bed lights		A	A	A	S	S	S	S	S	S
"1794 Edition" stamped easy lower and lift tailgate with smart switch release							S	S		
"TRD PRO" stamped easy lower and lift tailgate with smart switch release									S	
"TUNDRA" stamped easy lower and lift tailgate	S	S	S	S	S	S				S
Aluminum-reinforced composite bed construction	S	S	S	S	S	S	S	S	S	S
Deck rail header	S									
Power tailgate-release switch located in taillight, key fob and dash with knee-lift assist			S	S	S	S	S	S	S	S
Power tailgate-release switch on key fob and dash with knee-lift assist		A								
"TRD OFF-ROAD" bedside decals		A	A	A			A	A		
Tri-color decals on front doors and rear tailgate spoiler		A								
LED center high-mount stop light (CHMSL) with integrated cargo lights	S	S	S	S	S	S	S	S	S	S
LED Trailer Reverse Assist (TRA) light	S	S	S	S	S	S	S	S	S	S
"TRD PRO" hood badge									S	
Black door handles, window molding, mirror caps and tailgate spoiler	S									
Chrome "1794 EDITION" door garnish, side molding, door handles, window molding and mirror caps							S	S		
Chrome "TUNDRA" and "LIMITED" door badges, door handles and window molding			S	S						
Chrome "TUNDRA" and "SR5" door badges		S		S						
Dark-chrome-accented side door moldings with "PLATINUM" badge					S	S				
Gloss-black window molding, tailgate spoiler and overfenders					S	S				
Gloss-black-painted A-pillar, except on Midnight Black Metallic and Blueprint		S	S	S	S	S	S	S	S	S
i-FORCE MAX tailgate badge				S		S			S	S
"4x4" tailgate badge	S	S	S	S	S	S	S	S		S

## TUNDRA FEATURES

S=Standard

A=Available

Exterior (continued)	SR	SR5	Limited	Limited i-FORCE MAX	Platinum	Platinum i-FORCE MAX	1794 Edition	1794 Edition i-FORCE MAX	TRD Pro	Capstone
"i-FORCE MAX" hood badge				S		S		S	S	S
Chrome "CAPSTONE" door badge and garnish, door handles, window molding and mirror caps										S
Chrome single exhaust tip										S
TRD Pro black dual exhaust tips									S	
Power running boards and BedStep®					A	A	A	A		S
Front and rear mudguards		A	A	A			A	A	S	

## Interior

Day/night rearview mirror	S	S								
Digital display auto-dimming rearview mirror with compass and HomeLink® universal transceiver		A	A	A	S	S	S	S		S
Thin-bezel auto-dimming rearview mirror with HomeLink® universal transceiver		A	S	S					S	
Smart Key System with Push Button Start	S	S	S	S	S	S	S	S	S	S
Power tilt/slide panoramic roof with power sunshade			A	A	S	S	S	S	S	S
Acoustic laminated windshield			S	S	S	S	S	S	S	
Acoustic laminated windshield and side windows										S
Power horizontal rear window with defogger and privacy glass	S	S								
Power vertical rear window with defogger and privacy glass	S	S	S	S	S	S	S	S	S	S
Power windows with one-touch auto up/down and jam protection	S	S	S	S	S	S	S	S	S	S
Rear-door sunshades					S	S	S	S		S
Front and rear LED maplights	S	S	S	S	S	S	S	S	S	S
Illuminated center console storage bin and glove box			S	S	S	S	S	S	S	S
Instrument panel and door ambient lighting, illuminated driver and passenger footwells, and front- and rear-door LED pocket lights					S	S	S	S		S
"PLATINUM" instrument panel badge					S	S				
American walnut wood-grain interior trim with laser-etched "1794 EDITION" instrument panel badge							S	S		
Dark-gray American walnut wood-grain interior trim with backlit "CAPSTONE" instrument panel badge and metal speaker grilles										S
Leather-wrapped shift knob			S	S	S	S	S	S		S
Red TRD engine start button		A	A	A					S	
Soft-touch instrument panel, center console and door surfaces			S	S	S	S	S	S	S	S
TRD leather-wrapped shift knob		A	A	A			A	A		
TRD Pro "TOYOTA" heritage instrument panel badge									S	
TRD red-striped leather-wrapped shift knob		A							S	
Backup camera with projected path	S	S	S	S	S	S	S	S	S	S
Drive Mode Select (DMS) switch and dial		S	S	S	S	S	S	S	S	S
Multi-Terrain Monitor (MTM) with cameras									S	
Panoramic View Monitor (PVM) with cameras		A	A	A	S	S	S	S		S
Qi-compatible wireless smartphone charging			A	A	S	S	S	S	S	S
120V/400W rear-seat AC power outlet		A	A	A	S	S	S	S	S	S
Electronic locking fuel door				S		S		S	S	S

**TUNDRA FEATURES**

S=Standard

A=Available

Interior (continued)	SR	SR5	Limited	Limited i-FORCE MAX	Platinum	Platinum i-FORCE MAX	1794 Edition	1794 Edition i-FORCE MAX	TRD Pro	Capstone
Fixed center console with gated shift lever, driving controls, four cup holders, and center storage bin	S	S	S	S	S	S	S	S	S	S
Front 12V auxiliary power outlet	S	S	S	S	S	S	S	S	S	S
Front and rear assist grips	S	S	S	S	S	S	S	S	S	S
Overhead console with rear window control, sunglasses storage and Safety Connect®	S	S	S	S	S	S	S	S	S	S
Rear-seat air vents	S	S	S	S	S	S	S	S	S	S
10-in. color Head-Up Display (HUD) with speedometer, navigation and Hybrid System Indicator					A	A	A	A		S
12.3-in. digital meter with selectable gauge display screens and fuel economy, Driver Assist, vehicle/trip information, and warning messages			S	S	S	S	S	S	S	S
Combination meter with analog gauges and 4.2-in. color digital gauge cluster with fuel economy, Driver Assist, vehicle/trip information, and warning messages	S	S								
60/40 split, folding rear seat	S	S								
60/40 split, folding rear seat with center armrest and cup holders			S	S	S	S	S	S	S	S
Driver's-seat memory function			S	S	S	S	S	S	S	S
Fabric-trimmed seats	S	S								
Heated and ventilated front and rear seats					S	S	S	S		S
Heated and ventilated front seats			S	S					S	
Heated front seats		A	S	S					S	
Leather-trimmed seats with contrast stitching		A	S	S						
Leather-trimmed seats with premium contrast stitching					S	S	S	S		
Multi-function massaging front seats					S	S	S	S		S
Rear under-seat storage compartment with removable and adjustable partitions	S	S	S		S		S			
Shale premium textured leather-trimmed seats with contrast stitching										S
TRD Pro SofTex®-trimmed seats with contrast stitching and technical-camo-pattern inserts									S	
Dual zone automatic climate control with air filtration and individual temperature settings for driver and front passenger with S-Flow		S	S	S	S	S	S	S	S	S
Single-zone automatic climate control with air filtration with S-Flow	S	S								
1794 Edition all-weather floor mats							S	S		
Aluminum sport pedals		A	A	A			A	A	S	
Capstone floor mats										S
TRD Pro all-weather floor mats									S	
Heated steering wheel		A	A	A	S	S	S	S		S
Leather-wrapped manual tilt/telescopic steering wheel with phone, audio, display/infotainment, and Driver Assist controls		A	S	S						
Leather-wrapped power tilt/telescopic steering wheel with phone, audio, display/infotainment, and Driver Assist controls					S	S	S	S		S
Polyurethane manual tilt/telescopic steering wheel with phone, audio, display/infotainment, and Driver Assist controls	S	S								
TRD leather-wrapped manual tilt/telescopic steering wheel with TRD badge, red center stripe, and phone, audio, display/infotainment, and Driver Assist controls		A							S	

## TUNDRA FEATURES

S=Standard

A=Available

Audio Multimedia	SR	SR5	Limited	Limited i-FORCE MAX	Platinum	Platinum i-FORCE MAX	1794 Edition	1794 Edition i-FORCE MAX	TRD Pro	Capstone
6-speaker audio system	S	S	S							
9-speaker audio system	S	S	S	S						
12-speaker JBL® Premium Audio including subwoofer and amplifier			A	A	S	S	S	S	S	S

## Safety and Convenience

Toyota Safety Sense™ 2.5 (TSS 2.5) Pre-Collision System with Pedestrian Detection (PCS w/PD), Full-Speed Range Dynamic Radar Cruise Control (DRCC), Lane Departure Alert with Steering Assist (LDA w/SA), Lane Tracing Assist (LTA), Automatic High Beams (AHB), Road Sign Assist (RSA)	S	S	S	S	S	S	S	S	S	S
3-point seatbelts for all seating positions	S	S	S	S	S	S	S	S	S	S
Blind Spot Monitor (BSM) with Rear Cross-Traffic Alert (RCTA) and Trailer Merge Warning		A	S	S	S	S	S	S	S	S
Child-protector rear door locks and power window lockout control	S	S	S	S	S	S	S	S	S	S
Drive-Start Control (DSC)	S	S	S	S	S	S	S	S	S	S
Eight total airbags, including driver and passenger side, knee and curtain airbags	S	S	S	S	S	S	S	S	S	S
Front and Rear Parking Assist with Automatic Braking		S	S	S	S	S	S	S	S	S
Hill Start Assist Control (HAC)	S	S	S	S	S	S	S	S	S	S
LATCH (Lower Anchors and Tethers for Children) includes lower anchors on all outboard second-row rear seats	S	S	S	S	S	S	S	S	S	S
Star Safety System™ — includes Vehicle Stability Control (VSC), Traction Control (TRAC), Anti-lock Brake System (ABS) with Electronic Brake-force Distribution (EBD), Brake Assist (BA) and Smart Stop Technology® (SST)	S	S	S	S	S	S	S	S	S	S
Tire Pressure Monitor System (TPMS)	S	S	S	S	S	S	S	S	S	S
Driver and front passenger active headrests	S	S	S	S	S	S	S	S	S	S

## Mechanical/Performance

Conventional 12V starter	S	S	S	S	S	S	S	S	S	S
Stop and Start Engine System (S)	S	S	S		S		S			
D-4ST direct-injection and port-injection fuel system	S	S	S	S	S	S	S	S	S	S
Twin turbochargers with electric wastegate valve actuators and water-cooled intercooler	S	S	S	S	S	S	S	S	S	S
Engine and body undercovers	S	S	S	S	S	S	S	S	S	S
Multi-Terrain Monitor (MTM) with selectable front, side and rear views		A	A	A			A	A	S	
Multi-Terrain Select (MTS), Crawl Control (CRAWL) and Downhill Assist Control (DAC)		A	A	A			A	A	S	
TRD aluminum front skid plate									S	
Xply™ Armor high-strength engine, fuel tank and transfer case undercovers		A	A	A			A	A	S	
24-valve DOHC aluminum cylinder heads with Dual Variable Valve Timing with intelligence (VVT-i)	S	S	S	S	S	S	S	S	S	S

**TUNDRA FEATURES**

S=Standard

A=Available

Mechanical/Performance (continued)	SR	SR5	Limited	Limited i-FORCE MAX	Platinum	Platinum i-FORCE MAX	1794 Edition	1794 Edition i-FORCE MAX	TRD Pro	Capstone
Stainless steel exhaust system	S	S	S	S	S	S	S	S	S	S
Class-IV towing hitch receiver and wiring harness with 7-pin/4-pin connector	S	S	S	S	S	S	S	S	S	S
Integrated Trailer Brake Controller (ITBC) with Multi-Information Display (MID) screen and trailer brake type, gain and manual trailer brake output controls		S	S	S	S	S	S	S	S	S
Trailer Backup Guide system with Straight Path Assist (SPA)		A	A	A	S	S	S	S		S
Trailer-Sway Control (TSC)	S	S	S	S	S	S	S	S	S	S
i-FORCE 3.4L Twin-Turbo V6	S	S	S		S		S			
i-FORCE MAX 3.4L Twin-Turbo V6 Hybrid				S		S		S	S	S
Electric motor power: 48 hp (36 kW)				S		S		S	S	S
Electric motor torque: 184 lb.-ft. (250 N·m)				S		S		S	S	S
Parallel hybrid system with permanent magnet synchronous motor/generator				S		S		S	S	S
288V sealed Nickel-Metal Hydride (Ni-MH) battery with 1.87 kWh capacity				S		S		S	S	S
10-speed Electronically Controlled automatic Transmission with intelligence (ECT-i), sequential shift mode, and uphill/downhill shift logic	S	S	S	S	S	S	S	S	S	S
4WDemand part-time 4-Wheel Drive with electronically controlled 2-speed transfer case (high/low ranges) and Automatic Limited-Slip Differential (Auto LSD)	S	S	S	S	S	S	S	S	S	S
Electronically controlled locking rear differential		A	A	A			A	A	S	
Rear-Wheel Drive (RWD) with Automatic Limited-Slip Differential (Auto LSD)	S	S	S	S	S		S			
Eco, Comfort, Normal, Sport S, Sport S+ and Custom driving modes					A	A	A	A		A
Eco, Normal and Sport driving modes		S	S	S	S	S	S	S	S	S
TOW/HAUL driving modes		S	S	S	S	S	S	S	S	S
Active aero front spoiler		S	S	S	S	S	S	S		S
Active grille shutters		S	S	S	S	S	S	S	S	S
Fully boxed high-strength steel ladder frame	S	S	S	S	S	S	S	S	S	S
Hydraulic cab mounts		A	S	S	S	S	S	S	S	S
Ultra-high-strength steel cabin construction with aluminum hood and front door panels	S	S	S	S	S	S	S	S	S	S
Adaptive Variable Suspension (AVS) system					A	A	A	A		A
Independent double-wishbone front suspension	S	S	S	S	S	S	S	S	S	S
Load-leveling Rear Height Control Air Suspension		A	A	A	A	A	A	A		A
TRD Pro off-road suspension with 1.1-in. front lift, 2.5-in. FOX® Internal Bypass coil-overs and rear remote-reservoir shocks, and TRD Pro front stabilizer bar									S	
TRD sport-tuned and lowered suspension with Bilstein® shocks		A								
Electric Power Steering (EPS)	S	S	S	S	S	S	S	S	S	S
Electric Parking Brake (EPB)	S	S	S	S	S	S	S	S	S	S
Electronically Controlled Braking (ECB) system	S	S	S		S		S			
Electronically Controlled Braking (ECB) system with integrated regenerative braking				S		S		S	S	S
Power-assisted, ventilated 13.9-in. front disc brakes with opposed dual-piston brake calipers	S	S	S	S	S	S	S	S	S	S

## INFO AND DISCLOSURES

1. Efficient 10-speed Automatic Transmission. Shown using visual effects. 2. Never tow beyond a vehicle's published towing capacities. 3. Crawl Control is designed for driving on difficult terrain at low speeds and assists the driver by controlling acceleration and braking, allowing the driver to focus on steering. See Owner's Manual for additional limitations. 4. The Toyota Tundra is designed to meet most off-road driving requirements, but off-roading is inherently dangerous. Abusive use may result in bodily harm or vehicle damage. Toyota encourages responsible operation to help protect you, your vehicle and the environment. Seatbelts should be worn at all times. Do not allow passengers to ride in cargo area. Payload includes the weight of occupants, cargo and options and is limited by weight distribution. The Toyota Genuine Accessory Warranty will only apply when the installation is performed by a trained Toyota-approved installer. Please see dealer for details. Professional driver on closed course. Do Not Attempt. SR5 CrewMax shown in Ice Cap with available TRD Rally Package. 2018 SR5 CrewMax shown in Magnetic Gray Metallic with available TRD Sport Package. Options shown. 5. Available i-FORCE twin-turbo V6. 6. Never tow beyond a vehicle's published towing capacities. Towing capacity shown is 11,120 lbs. Limited CrewMax shown in Magnetic Gray Metallic. 7. The Toyota Tundra is designed to meet most off-road driving requirements, but off-roading is inherently dangerous. Abusive use may result in bodily harm or vehicle damage. Toyota encourages responsible operation to help protect you, your vehicle and the environment. Seatbelts should be worn at all times. Do not allow passengers to ride in cargo area. TRD Pro CrewMax shown in Ice Cap. Options shown. 8. TRD Pro CrewMax interior shown in Black with Multi-Terrain Select. Options shown. 9. The Toyota Tundra is designed to meet most off-road driving requirements, but off-roading is inherently dangerous. Abusive use may result in bodily harm or vehicle damage. Toyota encourages responsible operation to help protect you, your vehicle and the environment. Seatbelts should be worn at all times. Do not allow passengers to ride in cargo area. Payload includes the weight of occupants, cargo and options and is limited by weight distribution. Platinum CrewMax with 6.5-ft. Long Bed shown in Blueprint. Options shown. 10. The Toyota Tundra is designed to meet most off-road driving requirements, but off-roading is inherently dangerous. Abusive use may result in bodily harm or vehicle damage. Toyota encourages responsible operation to help protect you, your vehicle and the environment. Seatbelts should be worn at all times. Do not allow passengers to ride in cargo area. SR5 CrewMax shown in Ice Cap with available TRD Rally Package. Options shown. 11. SR5 CrewMax shown in Ice Cap with available TRD Rally Package. Options shown. 12. Bilstein® is a registered trademark of ThyssenKrupp Bilstein GmbH FED REP GERMANY. 13. Falken is a registered trademark of Sumitomo Rubber Industries, Ltd. 14. FOX is a registered trademark of FOX Factory, Inc. 15. BBS® is a registered trademark of BBS of America, Inc. 16. 1794 Edition CrewMax with TRD Off-Road Package shown in Midnight Black Metallic. TRD Pro CrewMax shown in Ice Cap. Limited CrewMax with TRD Off-Road Package shown in Supersonic Red. Options shown. 17. Available TRD Off-Road Bilstein® suspension. Bilstein® is a registered trademark of ThyssenKrupp Bilstein GmbH FED REP GERMANY. Options shown. 18. Available TRD Pro suspension. Options shown. 19. TRD Pro standard FOX® shock absorbers. FOX is a registered trademark of FOX Factory, Inc. 20. Never tow beyond a vehicle's published towing capacities. Limited Hybrid CrewMax with TRD Off-Road Package and 5.5-ft. Bed shown in Supersonic Red. Options shown. 21. Never tow beyond a vehicle's published towing capacities. Limited CrewMax shown in Magnetic Gray Metallic. 22. The Panoramic View Monitor does not provide a comprehensive view of the area surrounding your vehicle. Look around to confirm clearance. See Owner's Manual for limitations. 23. The backup camera does not provide a comprehensive view of the rear area of the vehicle/trailer. When using straight path assist, driver should confirm clearance and is still responsible for safe operation. See Owner's Manual for limitations. 24. The Panoramic View Monitor does not provide a comprehensive view of the area surrounding your vehicle. Look around to confirm clearance. See Owner's Manual for limitations. Platinum CrewMax interior shown in Black with Panoramic View Monitor. Options shown. 25. 1794 Edition CrewMax interior shown in Saddle Tan. Options shown. 26. Payload includes the weight of occupants, cargo and options and is limited by weight distribution. The Toyota Genuine Accessory Warranty will only apply when the installation is performed by a trained Toyota-approved installer. Please see dealer for details. SR5 CrewMax shown in Ice Cap with available TRD Rally Package. 2018 SR5 CrewMax shown in Magnetic Gray Metallic with available TRD Sport Package. Options shown. 27. Never tow beyond a vehicle's published towing capacities. TRD Pro CrewMax shown in Ice Cap. SR5 Double Cab shown in Supersonic Red. Extra-cost color. 28. Limited CrewMax standard power vertical rear window. Options shown. 29. Platinum CrewMax interior shown in Black. Options shown. 30. Platinum CrewMax shown in Blueprint. Options shown. 31. The Toyota Tundra is designed to meet most off-road driving requirements, but off-roading is inherently dangerous. Abusive use may result in bodily harm or vehicle damage. Toyota encourages responsible operation to help protect you, your vehicle and the environment. Seatbelts should be worn at all times. Do not allow passengers to ride in cargo area. Platinum CrewMax shown in Blueprint. 1794 Edition CrewMax with TRD Off-Road Package shown in Midnight Black Metallic. Options shown. 32. Payload includes the weight of occupants, cargo and options and is limited by weight distribution. 33. Liftgate requires key fob present. 34. Do not exceed the recommended weight limit when placing items on the tailgate. See your Owner's Manual for details. 35. Payload includes the weight of occupants, cargo and options and is limited by weight distribution. TRD Pro CrewMax shown in Ice Cap. Options shown. 36. SR5 Double Cab shown in Ice Cap with available 8.1-ft. Long Bed. Vehicle(s) shown may include accessories not designed, manufactured or evaluated by Toyota nor covered by vehicle warranty. 37. JBL® is a registered trademark of Harman International Industries, Inc. 38. Apple CarPlay® requires a compatible iPhone® with an active data plan. Check compatibility at <https://www.apple.com/ios/carplay/>. Operability depends on network availability, a cellular connection and GPS signal. Services vary by vehicle and are subject to change at any time without notice. Data charges may apply. To learn more, go to <https://www.toyota.com/audio-multimedia/>. To learn more about Toyota Connected Services data collection, use, sharing and retention practices, please visit <https://www.toyota.com/support/privacy-notice/>. Apple CarPlay® is a registered trademark of Apple Inc. 39. iPhone® is a registered trademark of Apple Inc. All rights reserved. 40. Google, Android, Android Auto, YouTube Music and other marks are trademarks of Google LLC. 41. Wireless use of Android Auto requires a compatible Android 11.0+ phone and compatible active data plan. Check [g.co/androidauto/requirements](https://www.google.com/androidauto/requirements) for compatibility. Operability depends on network availability, a cellular connection, and GPS signal. Services vary by vehicle and are subject to change at any time without notice. Data charges may apply. To learn more, go to <https://www.toyota.com/audio-multimedia/>. To learn more about Toyota's Connected Services data collection, use, sharing, and retention practices, please visit <https://www.toyota.com/support/privacy-notice/>. Google, Android, Android Auto, YouTube Music and other marks are trademarks of Google LLC. 42. Service will automatically stop at the end of your trial subscription period unless you decide to continue service. Trial is non-transferable. If you do not wish to enjoy your trial, you can cancel by calling the number below. All SiriusXM services require a subscription, each sold separately by SiriusXM after the trial period. Service subject to the SiriusXM Customer Agreement and Privacy Policy, visit [siriusxm.com](https://www.siriusxm.com) for complete terms and how to cancel which includes online methods or calling 1-866-635-2349. Some services and features are subject to device capabilities and location availability. Satellite service not available in AK & HI. Content varies by SiriusXM subscription plan. All fees, content and features are subject to change. SiriusXM and related logos are trademarks of Sirius XM Radio Inc. and its respective subsidiaries. 43. Available 14-in. Toyota Audio Multimedia system with touchscreen. Screen depiction accurate at time of posting. Options shown. 44. Platinum CrewMax interior shown in Black with JBL® Premium Audio system with 12 speakers. JBL® is a registered trademark of Harman International Industries, Inc. Options shown. 45. Apple CarPlay® requires a compatible iPhone® with an active data plan.

## INFO AND DISCLOSURES

Check compatibility at <https://www.apple.com/ios/carplay/>. Operability depends on network availability, a cellular connection and GPS signal. Services vary by vehicle and are subject to change at any time without notice. Data charges may apply. To learn more, go to <https://www.toyota.com/audio-multimedia/>. To learn more about Toyota Connected Services data collection, use, sharing and retention practices, please visit <https://www.toyota.com/support/privacy-notice/>. Apple CarPlay® is a registered trademark of Apple Inc. Screen depiction accurate at time of posting. 1794 Edition CrewMax interior shown in Saddle Tan. Options shown. **46.** Wireless use of Android Auto requires a compatible Android 11.0+ phone and compatible active data plan. Check [g.co/androidauto/requirements](http://g.co/androidauto/requirements) for compatibility. Operability depends on network availability, a cellular connection, and GPS signal. Services vary by vehicle and are subject to change at any time without notice. Data charges may apply. To learn more, go to <https://www.toyota.com/audio-multimedia/>. To learn more about Toyota's Connected Services data collection, use, sharing, and retention practices, please visit <https://www.toyota.com/support/privacy-notice/>. Google, Android, Android Auto, YouTube Music and other marks are trademarks of Google LLC. Screen depiction accurate at time of posting. 1794 Edition interior shown in Saddle Tan. Options shown. **47.** Service will automatically stop at the end of your trial subscription period unless you decide to continue service. Trial is non-transferable. If you do not wish to enjoy your trial, you can cancel by calling the number below. All SiriusXM services require a subscription, each sold separately by SiriusXM after the trial period. Service subject to the SiriusXM Customer Agreement and Privacy Policy, visit [siriusxm.com](http://siriusxm.com) for complete terms and how to cancel which includes online methods or calling 1-866-635-2349. Some services and features are subject to device capabilities and location availability. Satellite service not available in AK & HI. Content varies by SiriusXM subscription plan. All fees, content and features are subject to change. SiriusXM and related logos are trademarks of Sirius XM Radio Inc. and its respective subsidiaries. Screen depiction accurate at time of posting. Capstone CrewMax interior shown. Options shown. **48.** Toyota Safety Sense™ effectiveness is dependent on many factors including road, weather and vehicle conditions. Drivers are responsible for their own safe driving. Always pay attention to your surroundings and drive safely. See Owner's Manual for limitations. **49.** The Pre-Collision System (PCS) with Pedestrian Detection (PD) is designed to determine if impact is imminent and help reduce impact speed and damage in certain frontal collisions involving a vehicle, a pedestrian or a bicyclist. PCS w/PD is not a substitute for safe and attentive driving. System effectiveness depends on many factors, such as speed, size and position of pedestrian or bicyclist and weather, light and road conditions. See Owner's Manual for limitations. **50.** Full-Speed Range Dynamic Radar Cruise Control is not a substitute for safe and attentive driving. See Owner's Manual for instructions and limitations. **51.** Lane Departure Alert with Steering Assist is designed to read visible lane markers under certain conditions. It provides a visual/audible alert and slight steering force when lane departure is detected. It is not a collision-avoidance system or a substitute for safe and attentive driving. Effectiveness depends on many factors including road, weather and vehicle conditions. See Owner's Manual for limitations. **52.** The Lane Tracing Assist (LTA) lane centering function is designed to read visible lane markers and detect other vehicles under certain conditions. It is only operational when DRCC is engaged. See Owner's Manual for limitations. **53.** Dynamic Radar Cruise Control is not a substitute for safe and attentive driving. See Owner's Manual for limitations. **54.** Road Sign Assist only recognizes certain road signs. See Owner's Manual for limitations. **55.** Automatic High Beams operate at speeds above 21 mph. See Owner's Manual for instructions and limitations. **56.** Drive Connect services may vary and are subject to change at any time without notice. Availability and accuracy depend on 4G network availability, a cellular connection and GPS signal. Without any one or more of these things, operability may be limited or precluded. Further, if and when 4G network changes or is discontinued, or the underlying technology required to support service becomes obsolete, then services will not work, and will need to be discontinued. Services require account registration through Toyota app and acceptance of Connected Services Terms of Use at [toyota.com/content/dam/toyota/privacyvts/pdf/connected-services-terms-use.pdf](http://toyota.com/content/dam/toyota/privacyvts/pdf/connected-services-terms-use.pdf) and Master Data Consent. Data charges may apply. For Toyota's Connected Services' vehicle-generated data collection, use, sharing, and retention practices and agreements, see [toyota.com/support/privacy-notice/](http://toyota.com/support/privacy-notice/). Trial period begins on original purchase or lease date of new vehicle. Services may vary and are subject to change without notice. Requires app download/registration, acceptance of Terms of Use and subscription after trial (if applicable). Data charges may apply. **57.** Cloud Navigation requires a trial or subscription to Drive Connect. Drive Connect availability and accuracy depend on certain factors outside of Toyota's control in order to operate, including 4G network availability, a cellular connection and GPS signal. Without any one or more of these things, operability may be limited or precluded. Services subject to change at any time without notice. Requires app download/registration and subscription after trial (if applicable). Terms of Use apply. Data charges may apply. See Owner's Manual and <https://www.toyota.com/connected-services/> for limitations. To learn about Toyota's Connected Services data collection, use, sharing and retention practices, visit <https://www.toyota.com/support/privacy-notice/>. **58.** Intelligent Assistant requires a trial or subscription to Drive Connect. Drive Connect availability and accuracy depend on certain factors outside of Toyota's control in order to operate, including 4G network availability, a cellular connection and GPS signal. Without any one or more of these things, operability may be limited or precluded. Services subject to change at any time without notice. Requires app download/registration and subscription after trial (if applicable). Terms of Use apply. Data charges may apply. See Owner's Manual and <https://www.toyota.com/connected-services/> for limitations. To learn about Toyota's Connected Services data collection, use, sharing and retention practices, visit <https://www.toyota.com/support/privacy-notice/>. **59.** On select models, Destination Assist will require a trial or subscription to Drive Connect. Drive Connect services may vary and are subject to change at any time without notice. Availability and accuracy depend on 4G network availability, a cellular connection and GPS signal. Without any one or more of these things, operability may be limited or precluded. Further, if and when 4G network changes or is discontinued, or the underlying technology required to support service becomes obsolete, then services will not work, and will need to be discontinued. Services require account registration through Toyota app and acceptance of Connected Services Terms of Use at [toyota.com/content/dam/toyota/privacyvts/pdf/connected-services-terms-use.pdf](http://toyota.com/content/dam/toyota/privacyvts/pdf/connected-services-terms-use.pdf) and Master Data Consent. Data charges may apply. For Toyota's Connected Services' vehicle-generated data collection, use, sharing, and retention practices and agreements, see [toyota.com/support/privacy-notice/](http://toyota.com/support/privacy-notice/). Trial period begins on original purchase or lease date of new vehicle. Services may vary and are subject to change without notice. Requires app download/registration, acceptance of Terms of Use and subscription after trial (if applicable). Data charges may apply. The Destination Assist trial period begins on original purchase or lease date of new vehicle. Paid subscription required after trial (if applicable). Terms of Use apply. **60.** Use only if aware of circumstances surrounding vehicle it is legal safe to do so (e.g., do not remotely start a gas engine vehicle in an enclosed space or if vehicle is occupied by a child). Remote Connect services vary by vehicle and are subject to change at any time without notice. Services depend on 4G network availability, a cellular connection and GPS signal. Without any one or more of these things, operability may be limited or precluded. Further, if and when 4G network changes or is discontinued, or the underlying technology required to support service becomes obsolete, then the services will not work and will need to be discontinued. Digital Key also requires Bluetooth® connectivity. Not available on manual transmissions. Services require account registration through Toyota app and acceptance of Connected Services Terms of Use at [toyota.com/content/dam/toyota/privacyvts/pdf/connected-services-terms-use.pdf](http://toyota.com/content/dam/toyota/privacyvts/pdf/connected-services-terms-use.pdf) and Master Data Consent. Data charges may apply. For Toyota's Connected Services' vehicle-generated data collection, use, sharing, and retention practices and

## INFO AND DISCLOSURES

agreements, see [toyota.com/support/privacy-notice/](https://toyota.com/support/privacy-notice/). Trial period begins on original purchase or lease date of new vehicle. Paid subscription required after trial (if applicable). Terms of Use apply. **61.** An active Remote Connect trial or subscription is required to use the features mentioned in the Toyota app. **62.** Service not available everywhere or in every vehicle. Depends on 4G cellular network availability, a cellular connection and GPS signal. Without any one or more of these things, operability may be limited or precluded. Up to 5 devices can be supported using in-vehicle connectivity. Services may vary and are subject to change without notice. Data charges may apply. Requires separate subscriptions to third-party provider services. Valid in the contiguous U.S. and Alaska. Go to <https://myvehicle.att.com/#/toyota/learn?language=en=US> for terms and conditions. The Wi-Fi Connect trial begins at the time of enrollment and expires the earlier of 3GB data use or the 1-month trial period ends. Trial begins at activation and expires the earlier of 3 GB data use or 1 mo. Valid in contiguous U.S. and Alaska. See <https://myvehicle.att.com/#/toyota/learn?language=en=US> for terms and conditions. **63.** Safety Connect® services vary by vehicle and are subject to change at any time without notice. Services depend on 4G network availability, a cellular connection, and GPS signal. Without any one or more of these things, operability may be limited or precluded, including access to response center and emergency support. Further, if and when 4G network changes or is discontinued, or the underlying technology required to support service becomes obsolete, then the services will not work and will need to be discontinued. Stolen vehicle police report required to use Stolen Vehicle Locator. Services require account registration through Toyota app and acceptance of Connected Services Terms of Use at <https://www.toyota.com/content/dam/toyota/privacyvts/pdf/connectedservices-terms-use.pdf> and Master Data Consent. Data charges may apply. For Toyota's Connected Services' vehicle-generated data collection, use, sharing, and retention practices and agreements, see <https://www.toyota.com/support/privacy-notice/>. The Safety Connect® trial is included for a minimum of 5 years. 4G network dependent. **64.** Enhanced 24/7 Roadside Assistance allows use of in-vehicle SOS button to assist response agent to identify vehicle location. Unlimited mileage coverage effective with an active Safety Connect® trial or subscription that depends on certain factors, including 4G network availability. Services require account registration through the Toyota app and acceptance of Connected Services Terms of Use at [toyota.com/content/dam/toyota/privacyvts/pdf/connected-services-terms-use.pdf](https://www.toyota.com/content/dam/toyota/privacyvts/pdf/connected-services-terms-use.pdf) and Master Data Consent. Data charges may apply. For Toyota's Connected Services' vehicle-generated data collection, use, sharing, and retention practices and agreements, see [toyota.com/support/privacy-notice/](https://www.toyota.com/support/privacy-notice/). Enhanced Roadside Assistance does not include parts and fluids, except limited emergency gas delivery. Towing distance up to 25 miles. Restrictions apply. Service subject to change at any time. Available in the continental U.S. and Canada. See Toyota dealer for details and exclusions. **65.** Building and/or parking structures may limit system effectiveness. Stolen vehicle police report required to use Stolen Vehicle Locator. For additional assistance contact the Toyota Brand Engagement Center at 1-800-331-4331. **66.** Service Connect services vary by vehicle and are subject to change at any time without notice. Services depend on 4G network availability, a cellular connection, and GPS signal. Without any one or more of these things, operability may be limited or precluded. Further, if and when 4G network changes or is discontinued, or the underlying technology required to support service becomes obsolete, then the services will not work and will need to be discontinued. Information provided is based on the last time data was collected from the vehicle and is not real-time data. Services require account registration through Toyota app and acceptance of Connected Services Terms of Use at <https://www.toyota.com/content/dam/toyota/privacyvts/pdf/connected-services-terms-use.pdf> and Master Data Consent. Data charges may apply. For Toyota's Connected Services' vehicle-generated data collection, use, sharing, and retention practices and agreements, see <https://www.toyota.com/support/privacy-notice/>. The Service Connect trial is included for a minimum of 5 years. 4G network dependent. **67.** Available Destination Assist, part of Drive Connect, shown. 1-year trial included on select grades. On select models, Destination Assist will require a trial or subscription to Drive Connect. Drive Connect services may vary and are subject to change at any time without notice. Availability and accuracy depend on 4G network availability, a cellular connection and GPS signal. Without any one or more of these things, operability may be limited or precluded. Further, if and when 4G network changes or is discontinued, or the underlying technology required to support service becomes obsolete, then services will not work, and will need to be discontinued. Services require account registration through Toyota app and acceptance of Connected Services Terms of Use at [toyota.com/content/dam/toyota/privacyvts/pdf/connected-services-terms-use.pdf](https://www.toyota.com/content/dam/toyota/privacyvts/pdf/connected-services-terms-use.pdf) and Master Data Consent. Data charges may apply. For Toyota's Connected Services' vehicle-generated data collection, use, sharing, and retention practices and agreements, see [toyota.com/support/privacy-notice/](https://www.toyota.com/support/privacy-notice/). Trial period begins on original purchase or lease date of new vehicle. Services may vary and are subject to change without notice. Requires app download/registration, acceptance of Terms of Use and subscription after trial (if applicable). Data charges may apply. The Destination Assist trial period begins on original purchase or lease date of new vehicle. Paid subscription required after trial (if applicable). Terms of Use apply. Drive Connect services may vary and are subject to change at any time without notice. Availability and accuracy depend on 4G network availability, a cellular connection and GPS signal. Without any one or more of these things, operability may be limited or precluded. Further, if and when 4G network changes or is discontinued, or the underlying technology required to support service becomes obsolete, then services will not work, and will need to be discontinued. Services require account registration through Toyota app and acceptance of Connected Services Terms of Use at [toyota.com/content/dam/toyota/privacyvts/pdf/connected-services-terms-use.pdf](https://www.toyota.com/content/dam/toyota/privacyvts/pdf/connected-services-terms-use.pdf) and Master Data Consent. Data charges may apply. For Toyota's Connected Services' vehicle-generated data collection, use, sharing, and retention practices and agreements, see [toyota.com/support/privacy-notice/](https://www.toyota.com/support/privacy-notice/). Trial period begins on original purchase or lease date of new vehicle. Services may vary and are subject to change without notice. Requires app download/registration, acceptance of Terms of Use and subscription after trial (if applicable). Data charges may apply. Active Drive Connect trial or subscription required. 4G network dependent. **68.** Available Remote Connect shown. 1-year trial included. Use only if aware of circumstances surrounding vehicle it is legal safe to do so (e.g., do not remotely start a gas engine vehicle in an enclosed space or if vehicle is occupied by a child). Remote Connect services vary by vehicle and are subject to change at any time without notice. Services depend on 4G network availability, a cellular connection and GPS signal. Without any one or more of these things, operability may be limited or precluded. Further, if and when 4G network changes or is discontinued, or the underlying technology required to support service becomes obsolete, then the services will not work and will need to be discontinued. Digital Key also requires Bluetooth® connectivity. Not available on manual transmissions. Services require account registration through Toyota app and acceptance of Connected Services Terms of Use at [toyota.com/content/dam/toyota/privacyvts/pdf/connected-services-terms-use.pdf](https://www.toyota.com/content/dam/toyota/privacyvts/pdf/connected-services-terms-use.pdf) and Master Data Consent. Data charges may apply. For Toyota's Connected Services' vehicle-generated data collection, use, sharing, and retention practices and agreements, see [toyota.com/support/privacy-notice/](https://www.toyota.com/support/privacy-notice/). Trial period begins on original purchase or lease date of new vehicle. Paid subscription required after trial (if applicable). Terms of Use apply. 4G network dependent. **69.** TRD Pro CrewMax interior shown in Cockpit Red. Options shown. **70.** Available Service Connect shown. Service Connect services vary by vehicle and are subject to change at any time without notice. Services depend on 4G network availability, a cellular connection, and GPS signal. Without any one or more of these things, operability may be limited or precluded. Further, if and when 4G network changes or is discontinued, or the underlying technology required to support service becomes obsolete, then the services will not work and will need to be

## INFO AND DISCLOSURES

discontinued. Information provided is based on the last time data was collected from the vehicle and is not real-time data. Services require account registration through Toyota app and acceptance of Connected Services Terms of Use at <https://www.toyota.com/content/dam/toyota/privacyvts/pdf/connected-services-terms-use.pdf> and Master Data Consent. Data charges may apply. For Toyota's Connected Services' vehicle-generated data collection, use, sharing, and retention practices and agreements, see <https://www.toyota.com/support/privacy-notice/>. The Service Connect trial is included for a minimum of 5 years. 4G network dependent. **71.** Never tow beyond a vehicle's published towing capacities. 1794 Edition Hybrid CrewMax shown in Midnight Black Metallic. Options shown. **72.** The backup camera does not provide a comprehensive view. Always look over shoulder and use outside mirrors. See Owner's Manual for limitations. **73.** Airbag systems supplement the seatbelts and are designed to inflate only under certain conditions and in certain types of severe collisions. Always wear seatbelt, sit upright in middle and as far back in seat as possible to help decrease risk of injury. Do not put objects in front of an airbag. See Owner's Manual for limitations. **74.** Do not rely exclusively on Blind Spot Monitor. Look over shoulder and use turn signal. See Owner's Manual for limitations. **75.** Do not rely exclusively on the Rear Cross-Traffic Alert. Visually confirm clearance during use. See Owner's Manual for limitations. **76.** Downhill Assist Control is designed to help driver maintain vehicle control and speed on steep, downhill descents and is not a substitute for safe driving judgment and practices. Factors including speed, grade, surface conditions and driver input can affect the DAC's ability to prevent loss of control. See Owner's Manual for additional limitations and details. **77.** BedStep® is a registered trademark of Lund Motion Products, Inc. All rights reserved. **78.** Extra-cost color. **79.** SofTex® is a registered trademark of Toyota Motor Sales, U.S.A., Inc.

## INFO AND DISCLOSURES

Toyota strives to build vehicles to match customer interest and thus they typically are built with popular options and option packages. Not all options/packages are available separately and some may not be available in all regions of the country. See [toyota.com](https://toyota.com) for information about options/packages commonly available in your area. If you would prefer a vehicle without any or with different options, contact your dealer to check for current availability or the possibility of placing a special order.

Color(s) depicted may vary based on multiple factors, including ambient lighting and the format in which it is being viewed (e.g., computer, mobile device or print).

Some vehicles are shown with available equipment. Seatbelts should be worn at all times. For details on vehicle specifications, standard features and available equipment in your area, contact your Toyota dealer. A vehicle with particular equipment may not be available at the dealership. Ask your Toyota dealer to help locate a specifically equipped vehicle.

All information presented herein is based on data available at the time of posting, is subject to change without notice and pertains specifically to mainland U.S.A. vehicles only. Vehicles shown may be prototypes, shown using visual effects and/or shown with options. Actual models may vary.

### LEGEND

 Vehicle Information	 Legal Disclosure
---	--

## WARRANTIES

Date and mileage limitations refer to whichever occurs first from the date of purchase. Warranty coverage is subject to other terms and conditions. Refer to applicable Warranty and Maintenance Guide for full details.

Date and mileage limitations refer to whichever comes first from the date of first purchase. Warranty coverage is subject to other terms and conditions. Refer to applicable Warranty and Maintenance Guide for full details and for information regarding the Federal and California Emission Control Warranties, and Tire Limited Warranties. Emission coverages vary under Federal and California regulations.

For Toyota hybrid, plug-in hybrid, fuel cell and battery electric vehicles beginning model year 2020, the hybrid (HV) battery is covered for 10 years from date of first use or 150,000 miles, whichever comes first. Coverage is subject to the terms and conditions of your New Vehicle Limited Warranty. See the Toyota Owner's Warranty and Maintenance Guide for details.

The Toyota Genuine Accessory Warranty will only apply when the installation is performed by a trained Toyota-approved installer. Please see dealer for details.



**Let's Go Places**