



TOYOTA

2024 bZ4X

bZ4X

Getting you from point A to point bZ.

Take charge of your future. Say hello to the all-electric 2024 Toyota bZ4X, a vehicle that transcends the ordinary. More than a stylish SUV with cutting-edge features, bZ4X is designed to elevate your driving experience with luxurious comfort and outstanding performance at every turn.



See numbered footnotes in Disclosures section.

PERFORMANCE

Plug and play.

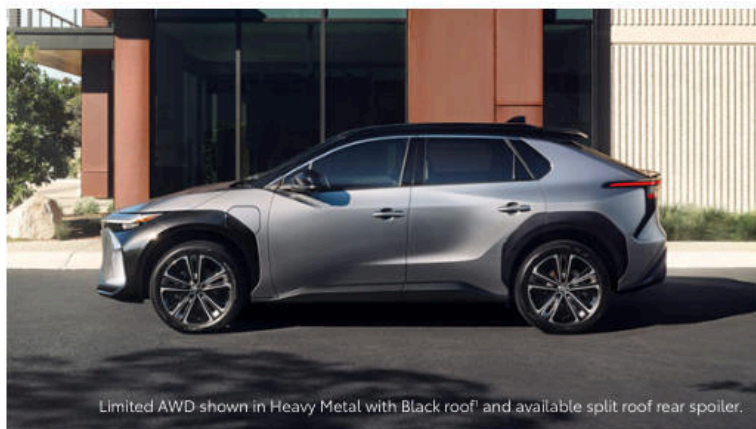
Experience the smooth acceleration, instant torque delivery and quiet drive of bZ4X.

Powered by its electric motor — one for front-wheel-drive models and two for all-wheel-drive models — you'll enjoy a confident drive that's not just capable; it's downright fun.



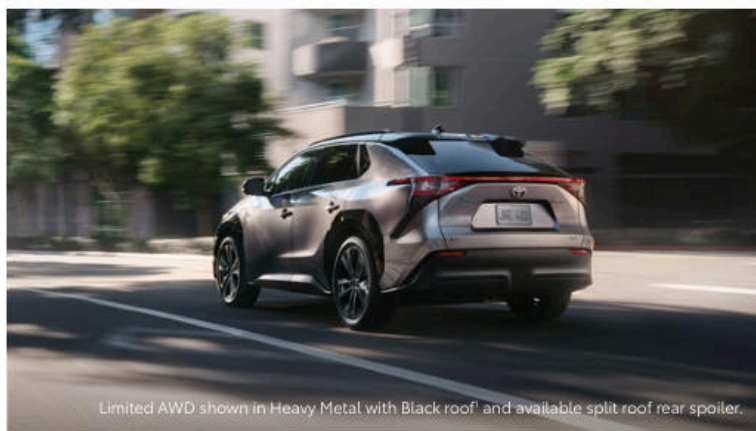
All-Wheel Drive with X-MODE

Whether helping you navigate through a downpour or hug the curves of a winding road, bZ4X's available AWD capability gives you confidence to stay the course. And with the push of a button, X-MODE maximizes bZ4X's AWD potential. By adjusting drive force, braking and throttle input, you'll enjoy its impressive performance in tougher conditions.



e-TNGA platform

Made specifically for Toyota electric vehicles, the e-TNGA (Toyota New Global Architecture) platform structure allows for more space that you can feel in the cabin and provides a solid foundation for outstanding driving performance, ride comfort and stability for the road ahead.



Powerful electric motor

bZ4X takes advantage of an electric powertrain by delivering almost instantaneous torque to a drive that comes naturally. Front-wheel-drive models use one electric motor to produce 201 hp with 196 lb.-ft. of torque, while all-wheel-drive models harness two electric motors to deliver 214 hp with 248 lb.-ft. of max torque to both axles combined.

See numbered footnotes in Disclosures section.



Limited shown in Heavy Metal with Black roof¹ and available split roof rear spoiler. Below: Limited shown in Wind Chill Pearl!

BATTERY PERFORMANCE

Powered to take on every day.

bZ4X is ready to take you from daily commutes to fun-filled weekends without missing a beat. Along with proven build quality and a meticulous production process, you can trust your bZ4X to be there for you day in and day out, because its batteries are designed to have a 90% capacity retention after ten years of ownership.



All-day range

With bZ4X's EPA-estimated driving range of up to 252 miles for front-wheel-drive models and up to 228 miles for all-wheel-drive models,² you can enjoy all the fun of electric driving, knowing it's a Toyota.

Up to
252
miles of EPA-estimated range²

CHARGING

Easy as one, two, three.

Charging bZ4X is as easy as plugging in your smartphone. bZ4X includes a portable dual-voltage charging cable with Level 1 and Level 2 capability.⁶⁴ Charge how you please with a cord that simply plugs into a 120V or 240V household outlet. For faster charging times, bZ4X is compatible with DC Fast Charging.³



Limited shown in Heavy Metal with Black roof!

LEVEL 1 – 120-Volt AC Charging



A great pick for drivers who do not routinely have long trips.



Charge anywhere there is a common household outlet, with the new dual-voltage charging cable's Level 1 adapter.⁶⁵

LEVEL 2 – 240-Volt AC Charging



Faster charging, allowing for more time on the road.⁴



Charge faster at home with the new dual-voltage charging cable's Level 2 adapter,⁶⁴ or explore additional home charger and installation options from ChargePoint® and Qmerit.



You can also find Level 2 chargers at public charging stations nationwide.⁵

LEVEL 3 – DC Fast Charging



Under ideal conditions, it can be the quickest way to charge up on the go.³



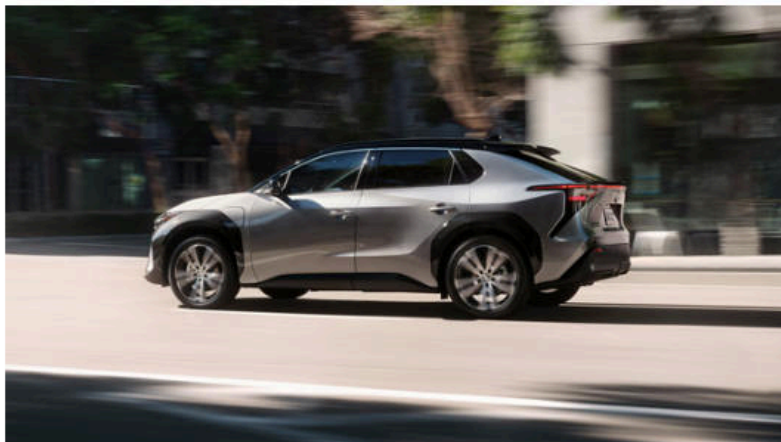
Currently only available at public charging stations.⁵



Limited shown in Wind Chill Pearl.¹ Below left: Limited shown in Heavy Metal with Black roof¹ and available split roof rear spoiler. Below right: 20-in. multi-spoke black/silver alloy wheels shown on Limited.

EXTERIOR

Sharp looks with purpose.



Aerodynamic performance

Lower front bumper vents and a fully covered underbody help air flow around the front and underside of the vehicle. The aerodynamic design is finished off with a streamlined rear that features a rear lip spoiler and an available split roof rear spoiler.

Striking design

Sleek character lines that flow from front to back, and an athletic stance, give bZ4X a look that's unmistakable.



20-in. alloy wheels

bZ4X's available 20-in. machine-finished alloy wheels do more than accentuate its powerful SUV stance — they command your attention.

INTERIOR

Centered around you.

Discover refined comfort inside bZ4X's modern design. With its soft-touch materials and an instrument panel that puts all your system controls within reach, the future will always look optimistic.

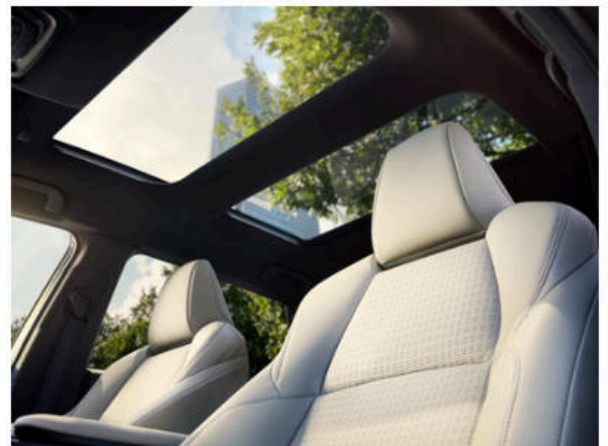
Premium interior

Gain a sense of luxury every time you enter bZ4X. From its standard leather-wrapped steering wheel to the personalized comfort of available heated and ventilated front seats, you'll feel the dedication in every detail.



Inviting space

bZ4X's interior exudes a feeling of warmth and comfort. Its open layout creates a cabin space that naturally provides impressive leg room for everyone and makes no compromise on convenience.



Fixed panoramic moonroof

The future looks brighter in bZ4X. Just open its power sunshade that spans across the roof. And whether sitting in the front or rear seats, you can always gaze at the stars or let the sunshine in.

Intelligence that empowers your drive.

12.3-in. Toyota Audio Multimedia touchscreen display

bZ4X's standard 12.3-in. Toyota Audio Multimedia touchscreen display rises from the center console for a seamless, modern look. Control a variety of functions with an intuitive touch, and connect your smartphone to enjoy your favorite apps, playlists and more.

Top-mount Multi-Information Display

Information that meets the eye. bZ4X's top-mount Multi-Information Display is placed right above the steering wheel, to clearly give you vehicle details, outside temperature, driver-assist systems and more — all to help keep your eyes on the road ahead.

Intelligent convenience

From rain-sensing wipers that automatically activate when the windshield gets too wet, to an auto-dimming rearview mirror that reduces glare, you'll feel an ease with every drive. And to raise your comfort efficiently, bZ4X's Eco function uses less overall energy by adjusting the air temp for front passengers while an available radiant foot-and-leg heater can quickly warm you up.

Advanced Park

Facing tight corners? Available Advanced Park¹⁰ helps you effortlessly maneuver your vehicle by using multiple sensors when you're pulling into or out of tight spots. Just activate Advanced Park inside your vehicle, and watch it do the hard work.

Experience a drive tailored to your needs. Features like standard Qi wireless charging⁸ and five USB ports⁹ add that extra versatility and convenience, for a more streamlined drive.



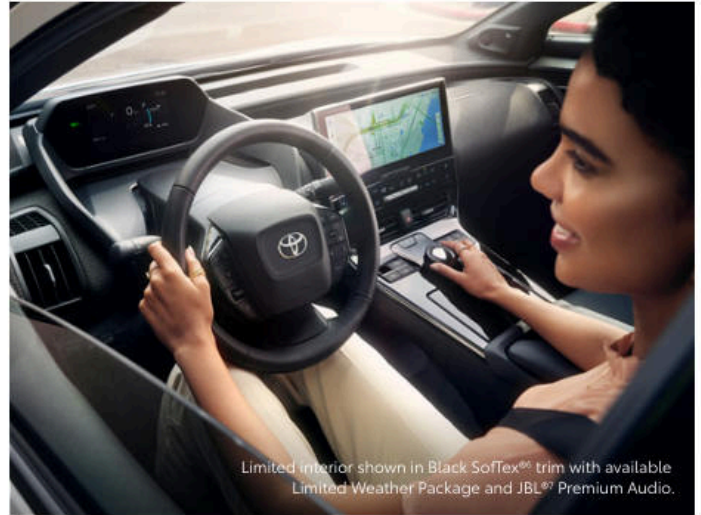
Screen depiction accurate at time of posting.



AUDIO MULTIMEDIA

Amplify your drive.

Enhance every drive with an experience that's all about you. Whether enjoying the sounds of your favorite soundtrack or interacting with an interface that you're familiar with, you'll always be surrounded by comfort.



Limited interior shown in Black SofTex[®] trim with available Limited Weather Package and JBL[®] Premium Audio.



JBL[®] Premium Audio system

Immerse yourself in quality sound with bZ4X's available JBL[®] Premium Audio system. A 9-speaker, 800-watt audio system equipped with a subwoofer, it provides phenomenal sound that amplifies every drive.



Wireless Apple CarPlay[®]

Bring along a familiar interface. With bZ4X's wireless Apple CarPlay[®] compatibility, you can use your compatible iPhone[®] with the multimedia system to get directions, make calls, send and receive messages and listen to music, all while staying focused behind the wheel.



Wireless Android Auto[™]

Stay connected on the road. By pairing your compatible Android[™] phone with the audio multimedia system, Android Auto[™] lets you get real-time traffic alerts, make and receive phone calls, listen to your favorite soundtrack and more.



SiriusXM[®] 3-month trial

With a SiriusXM[®] 3-month trial subscription,¹⁵ you get 425+ channels, including 165+ channels in your vehicle, to listen to ad-free music, plus sports, news, comedy and more. Innovative features in the bZ4X make it even easier to search, discover and listen than ever before, through personalized channel recommendations curated just "For You." Plus, the Live Sports category puts all your games and teams in one place for easy access.

Screen depictions accurate at time of posting. See numbered footnotes in Disclosures section.

Technology that keeps up with you.

Take advantage of smarter and convenient technologies designed to simplify your everyday life. Trial periods available on select models for the listed Connected Services.¹⁶ 4G network dependent.



Safety Connect[®]

Round-the-clock help when the unexpected happens.¹⁷

- ✓ Emergency Assistance Button (SOS)
- ✓ Enhanced Roadside Assistance¹⁸
- ✓ Automatic Collision Notification
- ✓ Stolen Vehicle Locator¹⁹



Service Connect

Being proactive to help keep your vehicle in peak condition.²⁰

- ✓ Vehicle Health Report
- ✓ Vehicle Maintenance Alert
- ✓ Maintenance Reminder

*To view included trial details, please visit toyota.com/connected-services.



Wi-Fi Connect

Turn your Toyota into a hotspot with 4G connectivity.²¹

- ✓ AT&T Hotspot
- ✓ Integrated Streaming for Apple Music^{®22} Subscription (separate subscription required)
- ✓ Integrated Streaming for Amazon Music²³ Subscription (separate subscription required)



Drive Connect

Enhanced features to get you where you need to be.²⁴

- ✓ Destination Assist²⁵
- ✓ Intelligent Assistant²⁶
- ✓ Cloud Navigation²⁷



Remote Connect

Manage your vehicle, including remote start and much more.²⁸

- ✓ Digital Key²⁹ Capability
- ✓ Remote Vehicle Start
- ✓ Unlock/Lock
- ✓ Remote Notifications
- ✓ Remote Climate
- ✓ Charge Management
- ✓ Guest Driver
- ✓ Smartwatch Compatibility

Ready when you are.

Whether you're backing up, changing lanes or keeping your devices charged, bZ4X has the intelligent tech you need to keep your adventures going smoothly.



Blind Spot Monitor with Rear Cross-Traffic Alert

The Blind Spot Monitor (BSM)³⁰ is designed to warn you when a vehicle in the next lane enters bZ4X's blind spot on either side of the vehicle. And when you're in reverse, the Rear Cross-Traffic Alert (RCTA)³¹ helps detect vehicles approaching from either side, warning you with side mirror indicators and a warning tone.



Panoramic View Monitor

bZ4X's available Panoramic View Monitor³² helps you check your surroundings for hazards. It uses multiple cameras around the vehicle to display a virtual bird's-eye view on the touchscreen display.



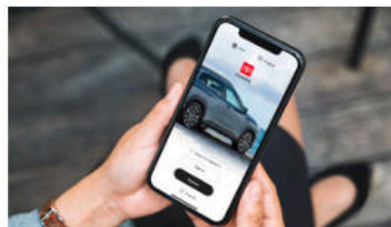
Hands-free power liftgate

The available hands-free power liftgate³³ is easy to open and close when your hands are full of groceries, luggage or gear. Just wave your foot under the center of the rear bumper. The bZ4X is designed to sense your Smart Key fob and automatically activate the liftgate.



Included dual-voltage charging cable

Find a charge almost anywhere you go. All you need to do is plug bZ4X's included portable dual-voltage charging cable⁵⁴ into a standard 120V household outlet for Level 1, or 240V outlet for Level 2, charging. And when not in use, it simply stows away in the storage compartment.



Toyota app connectivity

Take advantage of what your smartphone can do for you. With Connected Services,¹⁶ the Toyota app³⁴ gives you the ability to manage and stay connected to your bZ4X when you're away from it. Keep track of your vehicle's charge, find the nearest public charging station and more — for added peace of mind while on the go.



Digital Key capability

Convenience at hand. With an active Remote Connect trial or subscription,²⁸ you can access bZ4X Digital Key²⁹ to detect your Bluetooth[®]-connected³⁵ compatible smartphone, enabling you to lock/unlock and start/stop your vehicle. You can even share your Digital Key with others through the Toyota app³⁴ to give them the same access to your bZ4X when you're away.



TOYOTA SAFETY SENSE™ 3.0 (TSS 3.0)

Peace of mind comes standard.

Toyota Safety Sense™ (TSS)³⁶ is a suite of safety and driver-assistance technologies designed to support driver awareness, decision-making and vehicle operation. These features are available on many new Toyota vehicles at no additional cost.



Pre-Collision System with Pedestrian Detection³⁷



Full-Speed Range Dynamic Radar Cruise Control³⁸



Lane Departure Alert with Steering Assist³⁹



Automatic High Beams⁴⁰



Lane Tracing Assist⁴¹



Road Sign Assist⁴²



Proactive Driving Assist⁴³

bZ4X MODELS



XLE

Includes these key features

Mechanical/Performance

- ✓ AC synchronous electric generator
- ✓ Total system power output: 201 hp (FWD); 214 hp (AWD)
- ✓ Total system max torque: 196 lb.-ft. (FWD); 248 lb.-ft. (AWD)
- ✓ Zero Emission Vehicle (ZEV)
- ✓ Front-Wheel Drive (FWD)
- ✓ Available All-Wheel Drive (AWD)
- ✓ X-MODE with Snow/Dirt, Deep Snow/Mud, and Grip Control modes (AWD only)
- ✓ Regenerative braking with Boost and Eco drive modes
- ✓ EPA-estimated range (mi.): 252 (FWD); 228 (AWD)²

Exterior Features

- ✓ Bi-LED projector low- and high-beam headlights with LED accent lights
- ✓ LED Daytime Running Lights (DRL)
- ✓ LED taillights and stop lights
- ✓ Unique color-keyed center bumper; thin lower grille with matte-gray insert
- ✓ Panoramic fixed-glass roof with power sunshade
- ✓ Rain-sensing variable intermittent windshield wipers with de-icer function
- ✓ 18-in. multi-spoke black/silver alloy wheels with plastic covers
- ✓ Height-adjustable power liftgate with jam protection

Interior Features

- ✓ Seating for five
- ✓ Dual zone automatic climate control system with dust and pollen filter, and rear-seat vents
- ✓ Covered Qi-compatible wireless smartphone charging⁸ with charge indicator light
- ✓ Fabric/SofTex[®]-trimmed⁹ seats
 - 8-way power-adjustable driver's seat with lumbar support
 - 6-way adjustable front passenger seat
 - 60/40 split, reclining fold-flat rear seat
- ✓ Digital speedometer and charging status, 7-in. top-mount TFT LCD Multi-Information Display (MID)
- ✓ Four USB-C charge ports⁹ one USB-A media port⁹

Audio Multimedia

- ✓ 12.3-in. Toyota Audio Multimedia with six speakers
- ✓ Wireless Android Auto^{TM12} & Apple CarPlay^{®13} compatibility
- ✓ SiriusXM[®] 3-month trial subscription¹⁵
- ✓ Safety Connect[®] with up to 10-year trial;¹⁷ 4G network dependent
- ✓ Service Connect with up to 10-year trial;²⁰ 4G network dependent
- ✓ Remote Connect with 3-year trial²⁸
- ✓ Drive Connect with 3-year trial²⁴
- ✓ Wi-Fi Connect with up to 3 GB within 1-month trial²¹

Safety and Convenience Features

- ✓ Toyota Safety Sense[™] 3.0 (TSS 3.0)³⁶
- ✓ Star Safety System[™]
- ✓ Eight airbags⁴⁴
- ✓ Blind Spot Monitor (BSM)³⁰ with Rear Cross-Traffic Alert (RCTA)³¹
- ✓ Front and Rear Parking Assist with Automatic Braking (PA w/AB)⁴⁵
- ✓ Safe Exit Assist (SEA)⁴⁶

Options/Packages

- ✓ XLE Weather Package
 - Heated leather-trimmed steering wheel
 - Heated front seats



Limited

Adds to or replaces features offered on XLE

Mechanical/Performance

- ✓ AC synchronous electric generator
- ✓ Total system power output: 201 hp (FWD); 214 hp (AWD)
- ✓ Total system max torque: 196 lb.-ft. (FWD); 248 lb.-ft. (AWD)
- ✓ Zero Emission Vehicle (ZEV)
- ✓ Front-Wheel Drive (FWD)
- ✓ Available All-Wheel Drive (AWD)
- ✓ X-MODE with Snow/Dirt, Deep Snow/Mud, and Grip Control modes (AWD only)
- ✓ Regenerative braking with Boost and Eco drive modes
- ✓ EPA-estimated range (mi.): 236 (FWD); 222 (AWD)²

Exterior Features

- ✓ Multi-LED headlights
- ✓ Unique color-keyed center bumper; thin lower grille with chrome insert
- ✓ Chrome window trim
- ✓ Height-adjustable, foot-activated power liftgate with jam protection¹³
- ✓ 20-in. multi-spoke black/silver alloy wheels

Interior Features

- ✓ SofTex[®]-trimmed⁶ seats
 - 8-way power-adjustable driver's seat with lumbar support
 - 6-way adjustable front passenger seat
 - Heated and ventilated front seating
 - 60/40 split, reclining fold-flat rear seat
- ✓ Heated leather-trimmed manual tilt/telescopic 3-spoke steering wheel

Audio Multimedia

- ✓ 12.3-in. Toyota Audio Multimedia with six speakers
- ✓ Wireless Android Auto^{TM12} & Apple CarPlay^{®13} compatibility
- ✓ SiriusXM[®] 3-month trial subscription¹⁵
- ✓ Safety Connect[®] with up to 10-year trial;¹⁷ 4G network dependent
- ✓ Service Connect with up to 10-year trial;²⁰ 4G network dependent
- ✓ Remote Connect with 3-year trial²⁸
- ✓ Drive Connect with 3-year trial²⁴
- ✓ Wi-Fi Connect with up to 3 GB within 1-month trial²¹
- ✓ Digital Key²⁹ capability

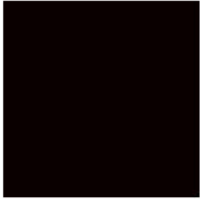
Safety and Convenience Features

- ✓ Toyota Safety Sense[™] 3.0 (TSS 3.0)³⁴
- ✓ Star Safety System[™]
- ✓ Advanced Park¹⁰
- ✓ Eight airbags⁴⁴
- ✓ Blind Spot Monitor (BSM)³⁰ with Rear Cross-Traffic Alert (RCTA)³¹
- ✓ Front and Rear Parking Assist with Automatic Braking (PA w/AB)⁴⁵
- ✓ Panoramic View Monitor³²
- ✓ Safe Exit Assist (SEA)⁴⁶

Options/Packages

- ✓ Limited Weather Package
 - Heated rear seats
 - Front radiant foot-and-leg warmer
- ✓ 9-speaker JBL[®] Premium Audio including subwoofer and amplifier
- ✓ Split roof rear spoiler

bZ4X COLORS & TRIMS



Black



Supersonic Red¹



Heavy Metal¹

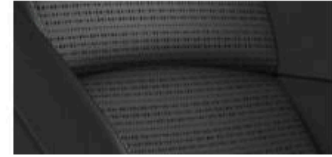


Elemental Silver Metallic¹



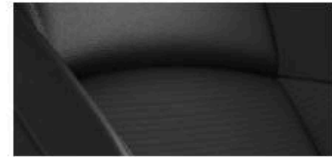
Wind Chill Pearl¹

Limited SofTex^{®6} trim shown in Black



Light Gray

XLE mixed media
(SofTex^{®6} trim and fabric) in Black



Black roof¹ available on Limited



Supersonic Red¹, Heavy Metal¹, Elemental Silver Metallic¹, Wind Chill Pearl¹

bZ4X WHEELS



18-in. multi-spoke black/silver alloy wheels with wheel covers



20-in. multi-spoke black/silver alloy wheels

bZ4X ACCESSORIES

This is a great way to add extra personality to your bZ4X. Not every accessory is available in your area, so for a complete list of accessories, go to toyota.com/bz4x/accessories.



Home Flex EV Charger by ChargePoint⁴⁷
Associated Accessory Product



Carpet Mat Package⁴⁸



All-Weather Floor Liner Package⁴⁸



Activity Mount



Cross Bars⁴⁹



Alloy Wheel Locks



Illuminated Doorsills



Cargo Net⁵⁰



Universal Tablet Holder⁵¹

WARRANTIES

Every Toyota Car, Truck and SUV is built to exceptional standards. And that's not idle boasting. We back it up with these Limited Warranty Coverages:

Basic Warranty: 36 months/36,000 miles (all components other than normal wear and maintenance items).

Powertrain Warranty: 60 months/60,000 miles (engine, transmission/transaxle, drive system, seatbelts and airbags).

Restraint Warranty: 60 months/60,000 miles

Corrosion Perforation Warranty: 60 months/unlimited miles (corrosion perforation of sheet metal).

Electric Vehicle Drive Components Warranty: The Electric Vehicle Drive Components Warranty (transaxle, traction battery, inverter with converter) is in effect for 8 years or 100,000 miles from the new vehicle purchase/lease date, whichever comes first. Warranty coverage is subject to other terms and conditions. Refer to applicable *Warranty and Maintenance Guide* for full details.

Emissions: Coverages vary under Federal and California regulations. Refer to applicable *Warranty and Maintenance Guide* for details.

Accessories: For Genuine Toyota Accessories purchased at the time of the new vehicle purchase, the Toyota Accessory Warranty coverage is in effect for 36 months/36,000 miles from the vehicle's in-service date, which is the same coverage as the Toyota New Vehicle Limited Warranty.

For Genuine Toyota Accessories purchased after the new vehicle purchase the coverage is 12 months, regardless of mileage, from the date the accessory was installed on the vehicle, or the remainder of any applicable new vehicle warranty, whichever provides greater coverage.

ChargePoint[®] Home stations by ChargePoint[®] (Manufacturer) Warranty: Home Flex EV Charger is covered by ChargePoint[®] Manufacturer's Warranty: 3-year parts warranty⁴²

You may be eligible for transportation assistance if it's necessary that your vehicle be kept overnight for repairs covered under warranty. Please see your authorized Toyota dealership for further details.

For complete details about Toyota's warranties, please visit www.toyota.com, refer to the applicable *Warranty and Maintenance Guide* or see your Toyota dealer.

bZ4X FEATURES⁵²

S = Standard O = Optional P = Available as part of a package

Exterior

	XLE	Limited
18-in. multi-spoke black/silver alloy wheels with two-tone covers	S	
20-in. multi-spoke machine-finished wheels with gray accents		S
Bi-LED projector low- and high-beam headlights, Automatic High Beams (AHB), ⁴⁰ and auto on/off	S	
Multi-LED projector low- and high-beam headlights, Automatic High Beams (AHB), ⁴⁰ and auto on/off		S
LED Daytime Running Lights (DRL)	S	S
LED taillights and stop lights	S	S
Unique color-keyed center bumper; thin lower grille	S	
Unique color-keyed center bumper; thin lower grille with chrome insert		S
Two-tone exterior color		O
Unique hammerhead hood with black-painted accents	S	S
SAE J1772/CCS1 charging port compatibility	S	S
Black-painted side fenders with air curtains	S	S
Black-painted heated power outside mirrors with turn signal and blind spot warning ³⁰ indicators, puddle lights and folding feature	S	S
Color-keyed outside door handles with touch-sensor lock/unlock feature on front doors	S	S
Panoramic fixed-glass roof with power sunshade	S	S
Black window trim	S	
Chrome window trim		S
Privacy glass on all rear side, quarter and liftgate windows	S	S
Split roof rear spoiler		O
Ducktail rear spoiler	S	S
Rear lower diffuser	S	S
Height-adjustable power liftgate with jam protection	S	
Height-adjustable, foot-activated power liftgate with jam protection ³³		S
Rain-sensing variable intermittent windshield wipers with de-icer function	S	S
Roof-mounted shark-fin antenna	S	S

Interior

Dual zone automatic climate control system with dust and pollen filter, and rear-seat vents	S	S
Front radiant foot-and-leg heater		P
Covered Qi-compatible wireless smartphone charging ⁵ with charge indicator light	S	S
Top-mount Multi-Information Display (MID) with indicators and 7-in. LCD display with speedometer, charge meter, power output meter, drive mode indicators, instrumentation and customizable settings, odometer, tripmeters, clock, outside temperature, rear passenger seatbelt indicators, fuel economy information, trip timer, charging information and settings, and warning messages	S	S
Fabric-trimmed seats with SofTex®-trimmed ⁶ bolsters; 8-way power-adjustable driver's seat with lumbar support; 6-way adjustable front passenger seat; driver and front passenger seatback pockets	S	
SofTex®-trimmed ⁶ seats; 8-way power-adjustable driver's seat with lumbar support; 6-way adjustable front passenger seat; driver and front passenger seatback pockets		S
60/40 split, reclining fold-flat rear seat with center armrest and cup holders	S	S
Heated front seats	P	
Heated and ventilated front seats		S
Heated rear seats		P
Black carpet flooring with driver's-side footrest	S	S
Leather-trimmed manual tilt/telescopic 3-spoke steering wheel	S	
Heated leather-trimmed manual tilt/telescopic 3-spoke steering wheel	P	S
Turn signal stalk with headlight controls and one-touch 3-blink lane change turn signals; wiper control stalk	S	S
Dial-type shift knob	S	S
Soft-touch fabric dashboard	S	S
Soft-touch armrests and center console with piano-black accents	S	S
Black interior door handles	S	S
Smart Key System on front doors with Push Button Start; remote keyless entry system with lock, unlock and panic functions; and remote air conditioning controls	S	
Smart Key System on front doors with Push Button Start; remote keyless entry system with lock, unlock and panic functions; power liftgate and remote air conditioning controls		S
Digital Key ²⁹ capability — Digital Key enables smartphone to be used instead of a physical key. Remote Connect ²⁸ subscription required.		S
Power windows with auto up/down and jam protection in all positions	S	S
Rear liftgate window defogger	S	S
Power door locks with shift-linked automatic lock/unlock feature	S	S
Auto-dimming rearview mirror	S	
Auto-dimming rearview mirror with HomeLink ^{®53}		S
Overhead console with maplights, Safety Connect ^{®17} button and power tilt/slide window shade controls	S	S
Sun visors with illuminated vanity mirrors	S	S
LED front-seat reading lights, dome light and cargo area light	S	S
Front and rear ambient floor lighting		S

See numbered footnotes in Disclosures section.

Interior (continued)

	XLE	Limited
Center console with covered compartment for Qi wireless charger, ⁸ two cup holders, Drive Mode, Multi-Terrain Select (MTS), Electric Parking Brake (EPB) ²⁴ and automatic Brake Hold ²⁵ controls, and front storage tray	S	S
Height-adjustable rear cargo area deck board with Level 1 charger storage and tonneau cover	S	S
Four USB-C charge ports ⁹ — two front/two rear	S	S
One USB-A media port ² — front	S	S
One 12V/120W ²⁵ auxiliary power outlet in bottom storage tray	S	S
Front-door storage pockets with bottle holders	S	S
Seatback pockets on driver and passenger side	S	S

Audio Multimedia

12.3-in. Toyota Audio Multimedia with six speakers, wireless Apple CarPlay ^{®13} & Android Auto ^{™12} compatibility, SiriusXM [®] 3-month trial subscription. ¹⁵ See toyota.com/audio-multimedia for details.	S	S
9-speaker JBL ^{®7} Premium Audio including subwoofer and amplifier		O

Connected Services¹⁶

Drive Connect with 3-year trial subscription ²⁴ — includes Cloud Navigation ²⁷ with Google Points-of-Interest (POI) data, Intelligent Assistant ²⁵ with Hey, Toyota, and Destination Assist. ²⁵ Subscription required. ²⁴	S	S
Safety Connect [®] with up to 10-year trial subscription; ¹⁷ 4G network dependent — includes Emergency Assistance, Stolen Vehicle Locator, ¹⁹ Roadside Assistance ¹⁸ and Automatic Collision Notification. Trial subscription is included at no additional cost. ¹⁷	S	S
Service Connect with up to 10-year trial subscription; ²⁰ 4G network dependent — receive personalized maintenance updates and vehicle health reports. Subscription required. ²⁰	S	S
Remote Connect with 3-year trial subscription ²⁸ — remotely interact with your vehicle through the Toyota app ³⁴ via your smartwatch. Allowing you to lock/unlock doors, start and stop the vehicle, use Remote Climate features, use Remote Charging features, locate your last parked location, check vehicle status and monitor guest drivers. Subscription required. ²⁸	S	S
Wi-Fi Connect with 30-day or up to 3 GB trial subscription ²¹ — with AT&T Wi-Fi hotspot and Integrated Streaming (Apple Music ^{®22} and Amazon Music ^{™23}) compatibility. Subscription required. ²¹	S	S

Safety and Convenience

Toyota Safety Sense [™] 3.0 (TSS 3.0) ³⁶ — includes Pre-Collision System with Pedestrian Detection (PCS w/PD), ³⁷ Lane Departure Alert with Steering Assist (LDA w/SA), ³⁹ Lane Tracing Assist (LTA), ⁴¹ Automatic High Beams (AHB), ⁴⁰ Full-Speed Range Dynamic Radar Cruise Control (DRCC) ³⁸ and Road Sign Assist (RSA) ⁴²	S	S
STAR SAFETY SYSTEM Star Safety System [™] — includes Enhanced Vehicle Stability Control (VSC), ³⁷ Traction Control (TRAC), Anti-lock Brake System (ABS), Electronic Brake-force Distribution (EBD), Brake Assist (BA) ³⁸ and Smart Stop Technology [®] (SST) ³⁹	S	S
Eight airbags ⁴⁴ — includes driver and front passenger Advanced Airbag System, driver and front passenger seat-mounted side airbags, driver's knee airbag, front passenger seat cushion airbag, and front and rear side curtain airbags	S	S
3-point seatbelts for all seating positions; driver-side Emergency Locking Retractor (ELR) and Automatic/Emergency Locking Retractor (ALR/ELR) on all passenger seatbelts	S	S
Adjustable front shoulder anchors	S	S
Backup camera ⁴⁰ with projected path	S	
Backup camera ⁴⁰ with dynamic gridlines		S
Panoramic View Monitor ³² with 360-degree Overhead View in low-speed drive and reverse, and Curb View		S
Blind Spot Monitor (BSM) ³⁰ with Rear Cross-Traffic Alert (RCTA) ³¹	S	S
Safe Exit Assist (SEA) ⁴⁶	S	S
Front and Rear Parking Assist with Automatic Braking (PA w/AB) ⁴⁵	S	S
Advanced Park ⁴⁵		S
Child-protector rear door locks and power window lockout control	S	S
LATCH (Lower Anchor and Tethers for Children) includes lower anchors on the outboard rear seats and tether anchors on all rear seats	S	S
Tire Pressure Monitor System (TPMS) ³¹ with direct pressure readout and individual tire location alert	S	S
Vehicle Proximity Notification System (VPNS) ⁶²	S	S
Anti-theft system with immobilizer ³	S	S

Packages and Options

XLE Weather Package — includes heated leather-trimmed steering wheel and heated front seats	P	
Limited Weather Package — includes heated rear seats and front radiant foot-and-leg warmer		P
9-speaker JBL ^{®7} Premium Audio including subwoofer and amplifier		O
Split roof rear spoiler		O

bZ4X SPECIFICATIONS

S = Standard O = Optional P = Available as part of a package

Mechanical/Performance

	XLE	Limited
BATTERY ELECTRIC MOTOR		
AC synchronous electric generator	S	S
Power output (front) (150kW) (FWD)	201 hp	201 hp
Power output (front/rear), 107/107 hp (80/80 kW) (AWD)	214 hp	214 hp
Max torque (front) (FWD)	196 lb.-ft.	196 lb.-ft.
Max torque (front/rear) (AWD)	248 lb.-ft.	248 lb.-ft.
Emission rating: Zero Emission Vehicle (ZEV)	S	S
TRACTION BATTERY		
Battery type: Lithium-ion	S	S
Total battery capacity (kWh) (FWD)	71.4	71.4
Total battery capacity (kWh) (AWD)	72.8	72.8
Total voltage (V)	355	355
CHARGING		
AC Level 2 charging time ⁴ (240V at 32A, from Low Battery Light to 100%)	9.5 hours	9.5 hours
DC Fast Charging time ⁵ (from Low Battery Light to 80%, in ideal conditions) (minutes)	30 with 150 kW (FWD)/ 35 with 150 kW (AWD)	30 with 150 kW (FWD)/ 35 with 150 kW (AWD)
AC Level 1 charging time ^{6,5} (120V at 12A, from Low Battery Light to 100%)	50 hours	50 hours
SAE J1772/CCS1 charging port compatibility	S	S
AC Level 1 (120V), AC Level 2 (240V) and DC Fast Charging compatibility	S	S
Onboard charger maximum input (kW)	7.6	7.6
DRIVETRAIN		
Front-Wheel Drive (FWD)	S	S
All-Wheel Drive (AWD)	O	O
CAPABILITY		
X-MODE drive mode with Snow/Dirt, Deep Snow/Mud, and Grip Control modes	AWD	AWD
Eco and Normal drive modes	S	S
Regenerative braking with Boost Mode	S	S
Snow drive mode	FWD	FWD
Approach/departure angle (degrees)	17.4/25.6	17.4/25.6
Ground clearance (in.)	8.1	8.1
BODY		
Reinforced unitized steel body with alloy undercover	S	S
SUSPENSION		
Independent MacPherson strut-type front suspension with stabilizer bar; multi-link rear suspension with stabilizer bar	S	S
STEERING		
Electric Power Steering (EPS); electric power-assisted rack-and-pinion	S	S
Steering wheel turns (lock-to-lock)	2.8	2.8
Steering ratio	14.1	14.1
Minimum turning circle diameter, curb-to-curb (ft.)	40.0	40.0
BRAKES		
Electronically Controlled Braking (ECB) system with integrated regenerative braking	S	S
Ventilated 12.9-in. front disc brakes; ventilated 12.5-in. rear disc brakes	S	S

Dimensions

EXTERIOR DIMENSIONS (in.)		
Overall height with antenna	69.0	69.0
Overall length	184.6	184.6
Overall width	73.2	73.2
Track (front/rear)	63.0/63.4	63.0/63.4
Wheelbase	112.2	112.2
INTERIOR DIMENSIONS, front/rear (in.)		
Head room	38.6/37.1	38.6/37.1
Hip room	54.4/44.8	54.4/44.8
Leg room	44.8/47.7	44.8/47.7
Shoulder room	57.8/56.0	57.8/56.0
INTERIOR DIMENSIONS (cu. ft.)		
Cargo volume behind front/rear seat (cu. ft.) ³⁰ (with JBL® ⁷ speakers)	27.7/56.9	27.7/56.9 (25.8/55.0)
Manufacturer-estimated interior volume (cu. ft.) (with JBL® ⁷ speakers)	123.0	123.0 (121.5)
Manufacturer-estimated passenger volume (cu. ft.)	94.4	94.4

See numbered footnotes in Disclosures section.

bZ4X SPECIFICATIONS

S = Standard O = Optional P = Available as part of a package

WEIGHTS/CAPACITIES

	XLE	Limited
Curb weight (lb.)	4266 (FWD) 4332 (AWD)	4398 (FWD) 4464 (AWD)
Gross Vehicle Weight Rating (GVWR) (lb.)	5435	5620
Seating capacity	5	5

TIRES

All-season radials	S	S
Tire Repair Kit	S	S

RANGE

EPA-estimated range (mi.): ²	252 (FWD) 228 (AWD)	236 (FWD) 222 (AWD)
---	------------------------	------------------------

DISCLOSURES

1. Extra-cost color. 2. EPA-estimated 252-mile total driving range rating for 2024 bZ4X XLE FWD; 236-mile total driving range rating for 2024 bZ4X Limited FWD; 228-mile total driving range rating for 2024 bZ4X XLE AWD; and 222-mile total driving range rating for 2024 bZ4X Limited AWD total driving range for when vehicle is fully charged and operated under ideal driving conditions. Use for comparison purposes only. Actual range may decrease significantly depending on speed, outside temperature, accessory use, how/where you drive, charging habits, and other factors. Battery capacity also decreases with time and use, which will reduce range. See www.fueleconomy.gov and *Owner's Manual* for details. 3. DC charging time will vary based on weather and other factors. DC charging times will increase as temperatures decrease, with significant increases possible at temperatures below freezing. DC Fast Charging should be limited to three sessions per day, regardless of the weather. After three 10-80% charge sessions, DC Fast Charging over the next day may take longer and be less effective. Accessory use, battery level and condition, and charger specifications also can negatively affect charging times. 4. Actual range attainable per minute/hour of charging will vary significantly depending on speed, outside temperature, accessory use, how/where you drive, battery condition and other factors. 5. Public charging experience will vary based on charger type (Level 2 or DC Fast Charger) and other factors including vehicle and environmental conditions. See toyota.com/electrified/charging for more information. 6. SoTex® is a registered trademark of Toyota Motor Sales, U.S.A., Inc. 7. JBL® is a registered trademark of Harman International Industries, Inc. 8. Charging may not be compatible with all mobile phones, smart devices, tablets, e-readers, MP3/WMA players and like products. 9. May not be compatible with all mobile phones, smart devices, tablets, e-readers, MP3/WMA players and like models. 10. Do not overly rely on Advanced Park and use only in accordance with applicable laws. Remain attentive to surroundings. Before operating, review *Owner's Manual* for instructions and limitations. 11. Google, Android, Android Auto, YouTube Music and other marks are trademarks of Google LLC. 12. Wireless use of Android Auto requires a compatible Android 11.0+ phone and compatible active data plan. Check g.co/androidauto/requirements for compatibility. Operability depends on network availability, a cellular connection and GPS signal. Services subject to change at any time without notice. Data charges may apply. To learn more, go to <https://www.toyota.com/audio-multimedia/>. To learn more about Toyota's Connected Services data collection, use, sharing and retention practices, please visit <https://www.toyota.com/support/privacy-notice/>. 13. Apps and services are subject to change at any time without notice. Data charges may apply. Apple CarPlay® functionality requires a compatible iPhone® connected wirelessly to the vehicle. Apple CarPlay® is a registered trademark of Apple Inc. 14. iPhone® is a registered trademark of Apple Inc. All rights reserved. 15. Trial length and service availability may vary by model, model year or trim. Service will automatically stop at the end of your trial subscription period unless you decide to continue service. If you do not wish to enjoy your trial, you can cancel by calling the number below. All SiriusXM services require a subscription, each sold separately by SiriusXM after the trial period. **Service subject to the SiriusXM Customer Agreement and Privacy Policy; visit www.siriusxm.com to see complete terms and how to cancel which includes calling 1-866-635-2349.** Some services and features are subject to device capabilities and location availability. All fees, content and features are subject to change. SiriusXM, Pandora and all related logos are trademarks of Sirius XM Radio Inc. and its respective subsidiaries. 16. Toyota Connected Services depend on certain factors outside of Toyota's control in order to operate, including cellular network availability and GPS signal. Without either of these things, operability may be limited or precluded, including access to response center and emergency support. Services vary by vehicle and are subject to change at any time without notice. Requires app download/registration and subscription after trial (if applicable). Terms of Use apply. Data charges may apply. See *Owner's Manual* and <https://www.toyota.com/connected-services/>. For Toyota's Connected Services' data collection, use, sharing and retention practices, please visit <https://www.toyota.com/support/privacy-notice/>. All trials begin on original purchase or lease date of new vehicle, with the exception of Wi-Fi, for which trial begins at time of activation. Paid subscription required after trial (if applicable). 17. Safety Connect® depends on factors outside of Toyota's control in order to operate, including cellular network availability and GPS signal. Without either of these things, operability may be limited or precluded, including access to response center and emergency support. Stolen vehicle police report required to use Stolen Vehicle Locator. If subscription includes Automatic Collision Notification, it will activate only in limited circumstances. Services vary by vehicle and are subject to change at any time without notice. Terms of Use apply. Data charges may apply. See *Owner's Manual* and <https://www.toyota.com/connected-services/>. For Toyota's Connected Services' data collection, use, sharing and retention practices, please visit <https://www.toyota.com/support/privacy-notice/>. A Safety Connect® trial is included for up to 10 years on select vehicles with paid Connected Services packages. See your Toyota dealer for details. 4G network dependent. 18. Requires cellular network availability, a cellular connection and GPS signal. May not work in all areas. Service may vary by vehicle and region. See Toyota dealer for details and exclusions. 19. Building and/or parking structures may limit system effectiveness. Stolen vehicle police report required to use Stolen Vehicle Locator. For additional assistance contact the Toyota Brand Engagement Center at 1-800-331-4331. 20. Service Connect depends on certain factors outside of Toyota's control in order to operate, including cellular network availability and GPS signal. Without either of these things, operability may be limited or precluded. Information provided is based on the last time data was collected from vehicle and is not real-time data. Services vary by vehicle and are subject to change at any time without notice. Terms of Use apply. Data charges may apply. See usage precautions and service limitations in *Owner's Manual* and <https://www.toyota.com/connected-services/>. To learn about Toyota's Connected Services' data collection, use, sharing and retention practices, please visit <https://www.toyota.com/support/privacy-notice/>. The Service Connect trial is included for up to 10 years. 4G network dependent. 21. Service not available everywhere or in every vehicle. Depends on cellular network availability and GPS signal. Without either of these things, operability may be limited or precluded. Up to 5 devices can be supported using in-vehicle connectivity. Services subject to change at any time without notice. The Wi-Fi Connect trial begins at the time of enrollment and expires the earlier of 3 GB data use or the 1-month trial period ends. Paid subscription required after trial. Select models include Integrated Streaming capability, which requires a separate subscription to third-party provider services. Data charges may apply. Valid in the contiguous U.S. and Alaska. Go to <https://myvehicle.att.com/#/toyota/learn?language=en&country=US> for terms and conditions. The Wi-Fi Connect trial begins at the time of enrollment and expires when 30 days or the earlier of 3GB of data is used or the 1-month period ends. Subscription required after trial. Integrated Streaming requires separate subscriptions to third-party provider services. Terms of Use apply. 22. Apple Music and the Apple logo are trademarks of Apple Inc., registered in the U.S. and other countries. Requires Wi-Fi network subscription after trial (if applicable) and your own Apple Music account. 23. Amazon, Amazon Music, and related marks are trademarks of Amazon.com, Inc., or its affiliates. 24. Drive Connect availability and accuracy depend on certain factors outside of Toyota's control in order to operate, including 4G network availability, a cellular connection and GPS signal. Without any one or more of these things, operability may be limited or precluded. Services subject to change at any time without notice. Requires app download/registration and subscription after trial (if applicable). Terms of Use apply. Data charges may apply. See *Owner's Manual* and <https://www.toyota.com/connected-services/> for limitations. To learn about Toyota's Connected Services data collection, use, sharing and retention practices, visit <https://www.toyota.com/support/privacy-notice/>. Trial period begins on original purchase or lease date of new vehicle. Paid subscription required after trial (if applicable). Terms of Use apply. 25. On select models, Destination Assist will require a trial or subscription to Drive Connect. Availability and accuracy depend on certain factors outside of Toyota's control in order to operate, including a cellular connection and GPS signal. Without either of these, operability may be limited or precluded. Services subject to change at any time without notice. Requires app download/registration and subscription to Drive Connect after trial (if applicable). Terms of Use apply. Data charges may apply. See *Owner's Manual* and <https://www.toyota.com/connected-services/> for limitations. To learn about Toyota's Connected Services data collection, use, sharing and retention practices, visit <https://www.toyota.com/support/privacy-notice/>. The Destination Assist trial period begins on original purchase or lease date of new vehicle. Paid subscription required after trial (if applicable). Terms of Use apply. 26. Intelligent Assistant requires a trial or subscription to Drive Connect. Drive Connect availability and accuracy depend on certain factors outside of Toyota's control in order to operate, including 4G network availability, a cellular connection and GPS signal. Without any one or more of these things, operability may be limited or precluded. Services subject to change at any time without notice. Requires app download/registration and subscription after trial (if applicable). Terms of Use apply. Data charges may apply. See *Owner's Manual* and <https://www.toyota.com/connected-services/> for limitations. To learn about Toyota's Connected Services data collection, use, sharing and retention practices, visit <https://www.toyota.com/support/privacy-notice/>. 27. Cloud Navigation requires a trial or subscription to Drive Connect. Drive Connect availability and accuracy depend on certain factors outside of Toyota's control in order to operate, including 4G network availability, a cellular connection and GPS signal. Without any one or more of these things, operability may be limited or precluded. Services subject to change at any time without notice. Requires app download/registration and subscription after trial (if applicable). Terms of Use apply. Data charges may apply. See *Owner's Manual* and <https://www.toyota.com/connected-services/> for limitations. To learn about Toyota's Connected Services data collection, use, sharing and retention practices, visit <https://www.toyota.com/support/privacy-notice/>. 28. Use only if aware of circumstances surrounding vehicle and it is legal and safe to do so (e.g., do not remotely start a gas engine vehicle in an enclosed space or if vehicle is occupied by a child). Remote Connect depends on certain factors outside of Toyota's control in order to operate, including 4G network availability, a cellular connection and GPS signal. Without any one or more of these things, operability may be limited or precluded. Services subject to change at any time without notice. Digital Key also requires Bluetooth® connectivity. Remote start/stop not available on manual transmission-equipped models. Remote start/stop and/or lock/unlock available on select models. Remote Connect is included with select paid Connected Services packages. See your Toyota dealer for details. Terms of Use apply. Data charges may apply. See *Owner's Manual* and <https://www.toyota.com/connected-services/> for additional details. To learn about Toyota's Connected Services' data collection, use, sharing and retention practices, please visit <https://www.toyota.com/support/privacy-notice/>. 29. Digital Key function requires Remote Connect trial or subscription. Use only if aware of circumstances surrounding vehicle and it is legal and safe to do so (e.g., do not remotely start engine if vehicle is in an enclosed space or vehicle is occupied by a child). Remote Connect depends on factors outside of Toyota's control, including an operative telematics device, a cellular connection, GPS signal, and the availability of a compatible wireless network, without which system functionality and availability may be limited or precluded. Digital Key also requires Bluetooth® connectivity. Service may vary by vehicle and region. Requires app download and registration/subscription after trial (if applicable). Terms of Use apply. Data charges may apply. Remote start/stop not available on manual transmission-equipped vehicles. Services subject to change at any time without notice. See usage precautions and service limitations in Toyota *Owner's Manual* and at <https://www.toyota.com/connected-services/> for additional details. To learn about Toyota's Connected Services data collection, use, sharing and retention practices, please visit <https://www.toyota.com/privacyvts/>. 30. Do not rely exclusively on Blind Spot Monitor. Look over shoulder and use turn signal. See *Owner's Manual* for limitations. 31. Do not rely exclusively on the Rear Cross-Traffic Alert. Visually confirm clearance during use. See *Owner's Manual* for limitations. 32. The Panoramic View Monitor does not provide a comprehensive view of the area surrounding your vehicle. Look around to confirm clearance. See *Owner's Manual* for limitations. 33. Water, weather, dirt, and other conditions may cause the hands-free power liftgate sensor to not operate properly. See *Owner's Manual* for limitations. 34. An active Remote Connect trial or subscription is required to use the features mentioned in the Toyota app. 35. A compatible Bluetooth®-enabled phone must first be paired. Phone performance depends on software, coverage and carrier. The Bluetooth® word mark and logos are registered trademarks of Bluetooth SIG, Inc. Use of such marks by Toyota is under license. 36. Toyota Safety Sense™ effectiveness is dependent on many factors including road, weather and vehicle conditions. Drivers are responsible for their own safe driving. Always pay attention to your surroundings and drive safely. See *Owner's Manual* for limitations. 37. The Pre-Collision System (PCS) with Pedestrian Detection (PD) is designed to determine if impact is imminent and help reduce impact speed and damage in certain frontal collisions involving a vehicle, a pedestrian, a bicycle, or a motorcyclist. PCS w/PD is not a substitute for safe and attentive driving. System effectiveness depends on many factors, such

DISCLOSURES

as speed, size and position of pedestrian or bicyclist and weather, light and road conditions. See *Owner's Manual* for limitations. **38.** Full-Speed Range Dynamic Radar Cruise Control is not a substitute for safe and attentive driving. See *Owner's Manual* for instructions and limitations. **39.** Lane Departure Alert with Steering Assist is designed to read visible lane markers under certain conditions. It provides a visual/audible alert and slight steering force when lane departure is detected. It is not a collision-avoidance system or a substitute for safe and attentive driving. Effectiveness depends on many factors including road, weather and vehicle conditions. See *Owner's Manual* for limitations. **40.** Automatic High Beams operate at speeds above 21 mph. See *Owner's Manual* for instruction and limitations. **41.** The Lane Tracing Assist (LTA) lane centering function is designed to read visible lane markers and detect other vehicles under certain conditions. It is only operational when DRCC is engaged. See *Owner's Manual* for limitations. **42.** Road Sign Assist only recognizes certain road signs. See *Owner's Manual* for limitations. **43.** Proactive Driving Assist (PDA) is designed to detect certain objects or curves in the road and provide gentle braking and/or steering support. PDA is not a substitute for safe and attentive driving. System effectiveness depends on many factors, such as speed, size and position of detected objects and weather, light and road conditions. See *Owner's Manual* for additional limitations and details. **44.** Airbag systems supplement the seatbelts and are designed to inflate only under certain conditions and in certain types of severe collisions. Always wear seatbelt, sit upright in middle and as far back in seat as possible to help decrease risk of injury. Do not put objects in front of an airbag. See *Owner's Manual* for limitations. **45.** Front and Rear Parking Assist with Automatic Braking (PA w/AB) may warn drivers of, and potentially brake for front and rear collisions with certain objects when traveling at low speeds. Drivers should visually confirm clearance during use. See *Owner's Manual* for instructions and limitations. **46.** Do not rely exclusively on Safe Exit Assist. Always look for approaching traffic before exiting the vehicle. See *Owner's Manual* for limitations. **47.** Accessory shown is not designed, manufactured or evaluated by Toyota. The accessory and any damage to other components or altered performance of the vehicle that may be caused by the accessory are not covered by your vehicle's warranty and Toyota disclaims all liability therefor. For information on the applicable third-party warranty, see <https://www.chargepoint.com/drivers/home>. Accessing the ChargePoint® network through the Toyota app requires an active Remote Connect trial or subscription. **48.** This floor mat/floor liner was designed specifically for use in your model and model year vehicle and SHOULD NOT be used in any other vehicle. To avoid potential interference with pedal operation, each mat/liner must be secured with its fasteners. Do not install a floor mat/floor liner on top of an existing floor mat/floor liner. **49.** Do not overload your vehicle and properly secure roof load. See *Owner's Manual* for weight limits and restrictions. **50.** Cargo and load capacity limited by weight and distribution. Always properly secure cargo and cargo area. **51.** The universal tablet holder is intended for passengers only. Drivers should always be sure to obey traffic regulations and maintain awareness of the road and traffic conditions at all times. Use of aftermarket accessories may pose an increased risk of injury to occupants in the event of an accident. Tablet sold separately. **52.** Toyota strives to build vehicles to match customer interest and thus they typically are built with popular options and option packages. Not all options/packages are available separately and some may not be available in all regions of the country. See toyota.com for information about options/packages commonly available in your area. If you would prefer a vehicle without any or with different options, contact your dealer to check for current availability or the possibility of placing a special order. Color(s) depicted may vary based on multiple factors, including ambient lighting and the format in which it is being viewed (e.g., computer, mobile device or print). **53.** HomeLink® and the HomeLink® house icon are registered trademarks of Gentex Corporation. **54.** When the system is on, Electric Parking Brake is designed to engage the Parking Brake under limited conditions. It may not hold the vehicle under all conditions. See *Owner's Manual* for additional limitations and details. **55.** When the system is on and the vehicle is in Drive, Brake Hold may temporarily keep the brakes engaged after the driver brings the vehicle to a complete stop. See *Owner's Manual* for limitations. **56.** Rated for 12 volts/10 amps. See *Owner's Manual* for additional limitations and details. **57.** Vehicle Stability Control is not a substitute for safe and attentive driving practices. Factors including speed, road conditions, weather and steering input can affect whether VSC will be effective. See *Owner's Manual* for limitations. **58.** Brake Assist is designed to help the driver take advantage of ABS and is not a substitute for safe driving practices. Braking effectiveness also depends on proper vehicle maintenance, tire and road conditions. See *Owner's Manual* for additional limitations and details. **59.** Smart Stop Technology® will reduce power to help the brakes bring vehicle to a stop during certain contemporaneous brake and accelerator pedal applications. See *Owner's Manual* for limitations. **60.** The backup camera does not provide a comprehensive view. Always look over shoulder and use outside mirrors. See *Owner's Manual* for limitations. **61.** The Tire Pressure Monitor System alerts the driver when tire pressure is critically low. For optimal tire wear and performance, tire pressure should be checked regularly with a gauge; do not rely solely on the monitor system. See *Owner's Manual* for limitations and details. **62.** When Vehicle Proximity Notification System is active, it is the driver's responsibility to maintain a lookout for pedestrians, cyclists, other cars and objects and to drive the vehicle in a safe and attentive manner to avoid making contact. **63.** The immobilizer is a state-of-the-art anti-theft system that is initiated when you insert your key into the ignition switch or bring a Smart Key fob into the vehicle. The engine will only start if the code in the transponder chip inside the key/fob matches the code in the vehicle's immobilizer. The transponder chip is embedded in the key/fob and can be costly to replace. If you lose a key or fob, your Toyota dealer can help or go to www.aloa.org to find a qualified locksmith in your area who can perform high-security key service. **64.** A 240V NEMA 14-50 outlet is required for Level 2 charging. Electrical outlets for use with the dual-voltage charging cable must be installed by a licensed, qualified electrician. **65.** Charging time may be longer using standard 120V outlet. Always plug-in/charge vehicle in accordance with *Owner's Manual*.

Toyota strives to build vehicles to match customer interest and thus they typically are built with popular options and option packages. Not all options/packages are available separately and some may not be available in all regions of the country. See toyota.com for information about options/packages commonly available in your area. If you would prefer a vehicle without any or with different options, contact your dealer to check for current availability or the possibility of placing a special order.

Color(s) depicted may vary based on multiple factors, including ambient lighting and the format in which it is being viewed (e.g., computer, mobile device or print).

Some vehicles are shown with available equipment. Seatbelts should be worn at all times. For details on vehicle specifications, standard features and available equipment in your area, contact your Toyota dealer. A vehicle with particular equipment may not be available at the dealership. Ask your Toyota dealer to help locate a specifically equipped vehicle.

All information presented herein is based on data available at the time of posting, is subject to change without notice and pertains specifically to mainland U.S.A. vehicles only. Vehicles shown may be prototypes, shown using visual effects and/or shown with options. Actual models may vary.



For Toyota Mobility program details, go to www.toyotamobility.com or call the Toyota Brand Engagement Center at 1-800-331-4331