

2019

Beetle



Volkswagen



Two fun to drive.

What's better than the iconic, fun-to-drive Beetle? That's easy — two of them. Take your pick from the always-classic coupe or the sun-loving convertible and enjoy the comforts of modern technology with the spirit of an old soul.

The original original.

It's an icon and an original, once again. With modern touches like a 174-hp 2.0L TSI® turbocharged engine, available Bi-Xenon headlights with LED Daytime Running Lights in front, and LED taillights in back. Plus a 6-speed automatic transmission can put things into high gear.* The Beetle shows that fun never goes out of style.



Iconic design

The Beetle has always been ahead of its time. And we've taken its iconic look to the next level. The Beetle unites classic styling and modern technology.

Bi-Xenon headlights with LED Daytime Running Lights

Available Bi-Xenon headlights with sleek LED Daytime Running Lights boast a longer life and use less energy. It's a bright side to this headlight story.

Rear spoiler

The rear spoiler on the Beetle gives a sleeker edge to the overall appearance of the car. So while you're turning corners, it's turning heads.

6-speed automatic transmission with Tiptronic® and Sport mode

The 6-speed automatic transmission offers acceleration and smooth gear changes. But if you're looking for more control, shift manually in Tiptronic mode and, to enhance your experience, drop it into Sport mode to amplify the fun.



Power tilting/sliding panoramic sunroof

This available feature opens to help give you maximum exposure. You're one twist away from letting the sun shine on your drive (coupe only).

FEATURES

Leather-wrapped, multi-function steering wheel
USB port
Composition Color touchscreen sound system
Blind Spot Monitor and Rear Traffic Alert*

AVAILABLE FEATURES

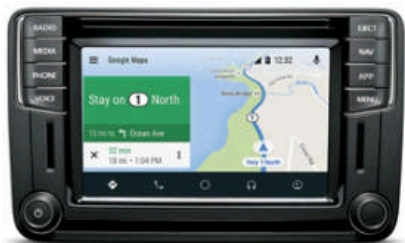
Keyless access with push-button start**
V-Tex leatherette seating surfaces
Heated front seats
Käferfach heritage-inspired glovebox

Sit down. Stand out.

It's not just the outside that thinks outside the box. Thanks to its retro-modern gauges and multi-function steering wheel, as well as the available customizable interior lighting and heritage-inspired glovebox, it's sure to turn heads even standing still.



androidauto



Discover Media touchscreen navigation system

Navigation gets even more savvy with an available sleek 6.33" touchscreen display with voice control and a proximity sensor that can enlarge certain menus for easier touch control. The system can also give you turn-by-turn directions and points of interest.

Fender® Premium Audio System

With 400 watts of power, every pulsating beat that pumps out of the available Fender Premium Audio System will give you clear, concert-quality sound to make sure you rock while you roll.

Volkswagen Car-Net® App-Connect*

Available VW Car-Net App-Connect allows you to connect your compatible smartphone with Apple CarPlay®, Android Auto™, or MirrorLink® to access select apps on the touchscreen display. From streaming music to mobile apps, it can all be accessed on the touchscreen.



The Beetle makes its exit with two grand finales.

Fun and outgoing, in more ways than one. It's the last year to catch the Beetle, so don't miss your opportunity with two special Final Editions.

Rhombus-quilted cloth with V-Tex leatherette trim

Fun, yet elegant. The all-new rhombus-quilted cloth with V-Tex leatherette trim seating surfaces in the Final Edition SE are eye-catching and stylish.

FINAL EDITION SE FEATURES

- 17" multi-spoke alloy wheels
- Black/Beige cloth with V-Tex leatherette trim seating surfaces
- Pedals in brushed steel
- Safari Uni dashpad with Käferfach glovebox
- Beetle badge on trunk



Diamond-stitched leather

New for the Final Edition SEL, diamond-stitched leather seating surfaces are a cut above.

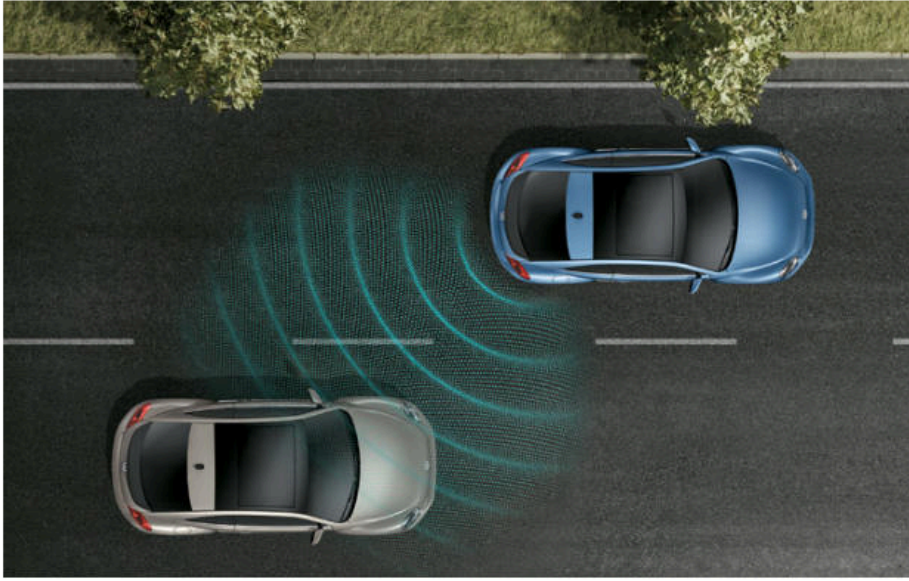
FINAL EDITION SEL FEATURES

- 18" disc white alloy wheels
- Leather seating surfaces
- Pedals in brushed steel
- Bi-Xenon headlights with LED Daytime Running Lights
- Fender® Premium Sound System
- Beetle badge on trunk
- Safari Uni painted dashpad



Helps you stay out of trouble.

Driver Assistance features can help give you more confidence on your drive.

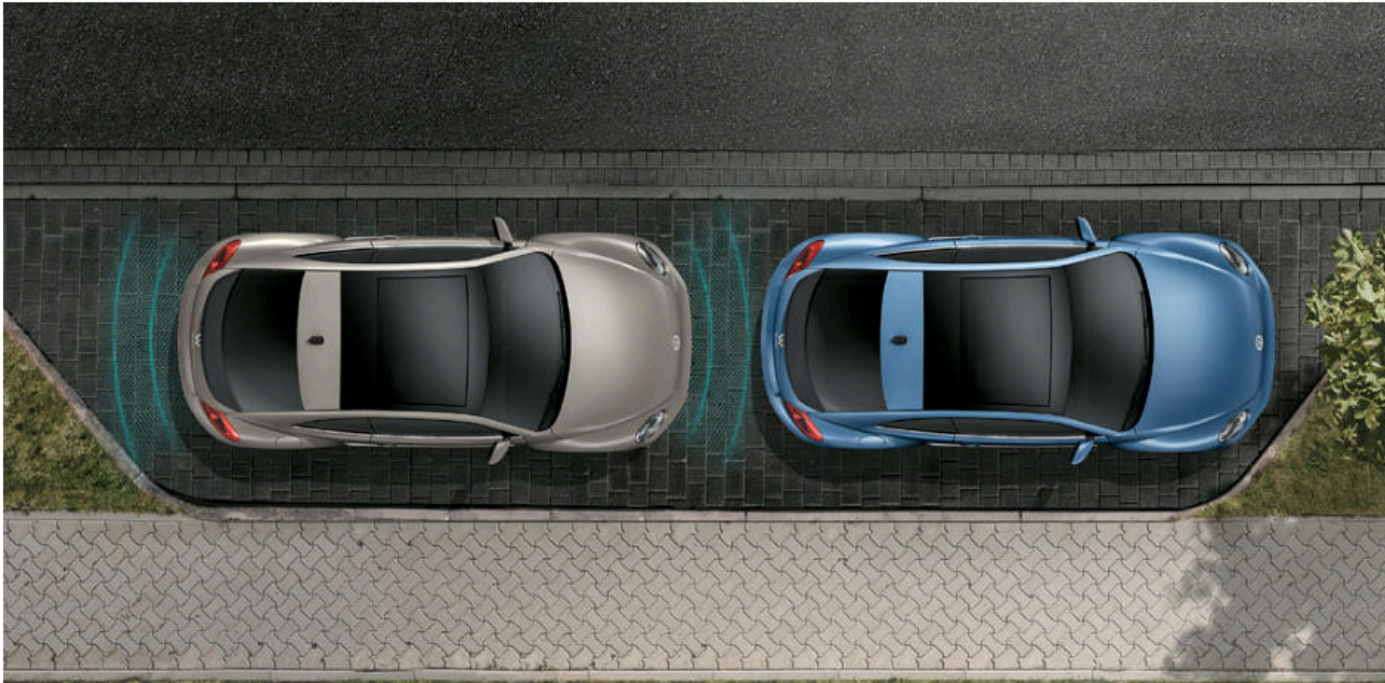


Blind Spot Monitor*

The sensors on the Blind Spot Monitor are able to help sense what you might miss. When driving, if you attempt to change lanes, the Blind Spot Monitor can help alert you to cars that may be in your blind spot.

Rear Traffic Alert*

Rear Traffic Alert comes in handy when you're backing up. It has sensors that can alert you to vehicles crossing in your path when in reverse and can even help brake the vehicle if needed.



Park Distance Control*

The available Park Distance Control has sensors that can help alert you as you back out of or drive into a parking spot. Audible signals and the optical parking system on the display indicate how much space you have behind and, on some vehicles, in front of the vehicle when parking. The frequency of the signal tone increases as the vehicle draws closer to the obstacle. If you get too close, a continuous tone sounds as a warning. The display provides additional information to the driver by showing the position of obstacles.

*Driver Assistance features are not substitutes for attentive driving. See Owner's Manual for further details and important limitations. Each image shown is a dramatization for illustration purposes only.

A lot goes in before you do.

Peace of mind comes in different forms on the Beetle with its multiple safety features. And it also comes with America's Best Bumper-to-Bumper Limited Warranty.*



Rear View Camera System

Benefit from the view of a wide lens when you want it. It can help you see obstacles when backing up, a feature so helpful you'll wonder how you ever managed without it.

Safety cage

Front and rear crumple zones help absorb crash energy, while a rigid safety cage helps deflect it away from the driver and passengers.

Tire Pressure Monitoring System (TPMS)

Monitoring and maintaining proper air pressure in your tires helps with efficiency and safety. The TPMS helps alert you to a loss of tire pressure so you know when to add air.

Intelligent Crash Response System (ICRS)**

In the event of a collision that deploys the airbags,¹ the ICRS can turn off the fuel pump, unlock the doors, and activate the hazard lights. It helps react if you might not be able to.

Seven stability-enhancing systems

From Electronic Brake-pressure Distribution (EBD), which helps maintain appropriate stopping power during a hard-braking situation, to Electronic Stability Control (ESC), which can adjust engine throttle and apply corrective forces to the wheels that need them most, your vehicle is equipped with a total of seven stability-enhancing systems.

*6 years/72,000 miles (whichever occurs first) New Vehicle Limited Warranty on MY2018 and newer VW vehicles, excluding e-Golf. Claim based on manufacturers' published data on length and transferability of car and SUV Bumper-to-bumper/Basic warranty only. Not based on other separate warranties. See owner's literature or dealer for warranty exclusions and limitations. **The Intelligent Crash Response System (ICRS) will only activate in a collision where the airbags deploy or safety belt pretensioners activate. Not all collisions cause airbags to deploy or safety belt pretensioners to activate. ¹Airbags are supplemental restraints only and will not deploy under all crash circumstances. Always use safety belts and seat children only in the rear, using restraint systems appropriate for their size and age.



America's Best Bumper-to-Bumper Limited Warranty**

The People First Warranty

6 Years/72,000 Miles · Transferable
Bumper-to-Bumper · Limited Warranty

Learn more at vw.com/warranty.

Cost of ownership

The 6 years or 72,000 miles New Vehicle Limited Warranty reduces the cost of owning a Volkswagen.†

Peace of mind

Every Volkswagen is designed with quality in mind. So our 6 years/72,000 miles (whichever occurs first) New Vehicle Limited Warranty isn't just extensive, it's proof of our confidence.*

Coverage

You're covered by the warranty for 6 years or 72,000 miles (whichever comes first).*

The smart choice

Considering the length of the virtual bumper-to-bumper coverage and the ability to transfer the remainder of the coverage to the next owner, The People First Warranty beats the competition every time.*

Transferable

Your vehicle remains covered even if transferred to a new owner. So long as the vehicle is less than 6 years old and has traveled fewer than 72,000 miles, the remainder of the warranty coverage transfers to the subsequent vehicle owner.†

Bumper-to-Bumper Limited Warranty

In general, the warranty provides practically bumper-to-bumper coverage for repairs to correct a defect in manufacturer's material or workmanship (i.e., mechanical defects).*

*6 years/72,000 miles (whichever occurs first) New Vehicle Limited Warranty on MY2018 and newer VW vehicles, excluding e-Golf. Remainder of warranty coverage transfers to subsequent vehicle owner. See owner's literature or dealer for warranty exclusions and limitations. **Claim based on manufacturers' published data on length and transferability of car and SUV Bumper-to-bumper/Basic warranty only. Not based on other separate warranties. †Claim based on 5 years/75,000 miles cost of ownership analysis comparing 6 years/72,000 miles (whichever occurs first) limited warranty and 3 years/36,000 miles (whichever occurs first) limited warranty.

Beetle Specs

● Standard, no additional cost – Not available PP Available with Premium Pkg

CV Standard, Convertible only CO Standard, Coupe only

EXTERIOR	S	SE	FINAL EDITION SE	FINAL EDITION SEL
Power-folding soft top with simple 1-step operation	CV	CV	CV	CV
Power tilting/sliding panoramic sunroof	–	CO	CO	CO
Bi-Xenon high-intensity headlights with LED Daytime Running Lights (DRL)	–	PP	–	●
Automatic headlights	–	●	●	●
Foglights	–	PP	–	●
LED taillights	–	PP	–	●
LED license plate lighting	–	PP	–	●
Sport-design front and rear bumpers	●	●	●	●
Exterior color-matched side sills and exterior mirrors	●	●	●	●
Power-operated side mirrors	●	●	●	●
Heated side mirrors	●	●	●	●
Heated windshield washer nozzles	CV	●	●	●
Rain-sensing windshield wipers	–	●	●	●
Rear spoiler	●	●	●	●
16" 10-spoke alloy wheels	●	–	–	–
17" 10-spoke alloy wheels	–	●	–	–
17" multi-spoke alloy wheels	–	–	●	–
18" disc alloy wheels	–	PP	–	–
18" disc white alloy wheels	–	–	–	●

INTERIOR	S	SE	FINAL EDITION SE	FINAL EDITION SEL
Leather-wrapped, multi-function steering wheel	●	●	●	●
Käferfach heritage-inspired glovebox	CV	●	●	●
Cloth seating surfaces	CO	–	–	–
V-Tex leatherette seating surfaces	CV	●	–	–
Cloth with V-Tex leatherette trim and rhombus-quilted design	–	–	●	–
Diamond-stitched leather seating surfaces	–	–	–	●
Heated front seats	CV	●	●	●
Leather-wrapped gearshift knob	●	●	●	●
3-color, 4-position interior ambient lighting	CV	●	●	●
Climatronic® dual-zone automatic climate control	–	●	●	●
Auto-dimming interior rearview mirror	–	●	●	●
Cruise control	●	●	●	●

PERFORMANCE	S	SE	FINAL EDITION SE	FINAL EDITION SEL
2.0L TSI®, 16-valve, DOHC, in-line 4-cylinder turbocharged engine with Intercooler and direct fuel injection; 174 hp, 184 lb-ft of torque	●	●	●	●
6-speed automatic transmission with Tiptronic® and Sport mode	●	●	●	●
Electromechanical power steering with variable assistance	●	●	●	●
Independent MacPherson struts and rear fully independent 4-link suspension	●	●	●	●

TECHNOLOGY	S	SE	FINAL EDITION SE	FINAL EDITION SEL
Composition Color 5" touchscreen sound system, MP3/WMA-compatible CD player, AM/FM radio, and SD memory card reader	●	–	–	–
Composition Media 6.3" touchscreen sound system with proximity sensor, MP3/WMA/FLAC-compatible CD player, AM/FM/HD radio, and SD memory card reader	–	●	●	–
Discover Media 6.3" touchscreen navigation system with proximity sensor, MP3/WMA/FLAC-compatible CD player, AM/FM radio, and SD memory card reader	–	PP	–	●

TECHNOLOGY CONT	S	SE	FINAL EDITION SE	FINAL EDITION SEL
Volkswagen Car-Net® App-Connect*	–	●	●	●
Volkswagen Car-Net® Security & Service with 6-month trial subscription**	–	●	–	●
Volkswagen Car-Net® Guide & Inform with 3-month SiriusXM® Traffic trial subscription and 3-month SiriusXM Travel Link® trial subscription†	–	PP	–	●
Bluetooth® technology with audio streaming for compatible devices	●	●	●	●
SiriusXM® All Access with 3-month trial subscription†	–	●	●	●
Fender® Premium Audio System	–	PP	–	●
USB port	●	●	●	●
Keyless access with push-button start††	–	●	●	●
Blind Spot Monitor†	●	●	●	●
Rear Traffic Alert†	●	●	●	●
Park Distance Control†	–	PP	–	●

SAFETY	S	SE	FINAL EDITION SE	FINAL EDITION SEL
Rear View Camera System	●	●	●	●
Automatic locking feature (doors lock when vehicle reaches 8 mph)	●	●	●	●
Anti-lock Braking System (ABS), Electronic Brake-pressure Distribution (EBD), and Hydraulic Brake Assist (HBA)	●	●	●	●
Crash-optimized front end	●	●	●	●
Driver and front passenger, front and side thorax airbag supplemental restraint system††	●	●	●	●
Electronic Stability Control (ESC), Anti-Slip Regulation (ASR), Electronic Differential Lock (EDL), and Engine Brake Assist (EBA)	●	●	●	●
Intelligent Crash Response System (ICRS)‡	●	●	●	●
LATCH (Lower Anchors and Tethers for Children) child seat anchor points	●	●	●	●
Tire Pressure Monitoring System (TPMS)	●	●	●	●
Automatic Rollover Support System	●	●	●	●
Side Curtain Protection® head airbags, front and rear‡‡	●	●	●	●
Front safety belts, height-adjustable, with pretensioners and load limiters	●	●	●	●

QUALITY	S	SE	FINAL EDITION SE	FINAL EDITION SEL
6-year/72,000-mile (whichever occurs first) New Vehicle Limited Warranty‡‡	●	●	●	●
7-year/100,000-mile (whichever occurs first) Limited Warranty Against Corrosion Perforation‡‡	●	●	●	●
3-year/36,000-mile (whichever occurs first) Roadside Assistance‡	●	●	●	●

DIMENSIONS	
Wheelbase	100 inches
Length	168.4 inches
Width	71.2 inches
Height	58.5 inches Coupe 58 inches Convertible
Ground clearance	5.7 inches Coupe 5.6 inches Convertible
Cargo volume	15.4 cu. ft. Coupe 7.1 cu. ft. Convertible
Cargo volume with rear seats folded down	29.9 cu. ft. Coupe

Colors and Wheels

EXTERIOR COLORS



Safari Uni



Pure White



White Silver Metallic



Habanero Orange Metallic



Stonewashed Blue Metallic



Platinum Gray Metallic



Tornado Red

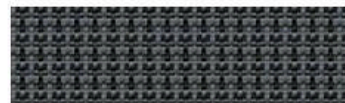


Silk Blue Metallic



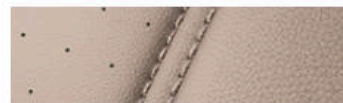
Deep Black Pearl

INTERIOR CLOTH



Black

INTERIOR V-TEX LEATHERETTE



Beige

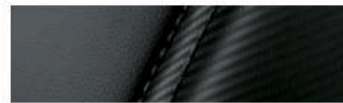
INTERIOR LEATHER



Black with diamond-stitched design



Black/Beige with V-Tex leatherette trim and rhombus-quilted design



Titan Black



Black/Beige with diamond-stitched design



Ceramique/Black

WHEELS



16" 10-spoke alloy



17" 10-spoke alloy



17" multi-spoke alloy



18" disc alloy



18" disc white alloy

Not all combinations of exterior paint and interior seating surfaces are available.

*Always pay careful attention to the road, and do not drive while distracted. Not all features available on all operating systems. Standard text and data usage rates apply. App-Connect features require compatible device, operating system, and mobile apps. See mobile device and app providers for terms and privacy. **Verizon Connect, Inc., is service provider of VW Car-Net Security & Service. Available on select models. Trial or paid subscription required. VW Car-Net Security & Service services require vehicle cellular connectivity and availability of vehicle GPS signal; certain services may collect location information. Standard text and data rates apply. See Terms of Service, Privacy Policy, and other details at www.vw.com/carnet. Always pay careful attention to the road, and do not drive while distracted. †Always pay careful attention to the road, and do not drive while distracted. ‡SiriusXM audio and data services each require a subscription sold separately, or as a package, by Sirius XM Radio Inc. If you decide to continue service after your trial, the subscription plan you choose will automatically renew thereafter and you will be charged according to your chosen payment method at then-current rates. Fees and taxes apply. Please see the SiriusXM Customer Agreement at www.siriusxm.com for complete terms and how to cancel, which includes calling SiriusXM at 1-888-539-7474. All fees and programming are subject to change. ©2018 Sirius XM Radio Inc. SiriusXM and all related marks and logos are trademarks of Sirius XM Radio Inc. ††See Owner's Manual for further details and important warnings about the keyless ignition feature. Do not leave vehicle unattended with the engine running, particularly in enclosed spaces. ‡Driver Assistance features are not substitutes for attentive driving. See Owner's Manual for further details and important limitations. ††Airbags are supplemental restraints only and will not deploy under all crash circumstances. Always use safety belts and seat children only in the rear, using restraint systems appropriate for their size and age. ‡The Intelligent Crash Response System (ICRS) will only activate in a collision where the airbags deploy or safety belt pretensioners activate. Not all collisions cause airbags to deploy or safety belt pretensioners to activate. †††See dealer or owner's literature for limited warranty details. ‡Roadside Assistance provided by a third party.



America's Best Bumper-to-Bumper Limited Warranty**

The People First Warranty*

6 Years/72,000 Miles · Transferable
Bumper-to-Bumper · Limited Warranty

It's important to take care of a classic. So we offer a transferable New Vehicle Limited Warranty, covering you for 6 years or 72,000 miles, whichever comes first.



ACCESSORIES



Stormproof™ Custom Car Covers^{†††}



Door Sill Protection Plate^{††}



MuddyBuddy® Trunk Liner^{†††}



Wind Deflector^{††}

*6 years/72,000 miles (whichever occurs first) New Vehicle Limited Warranty on MY2018 and newer VW vehicles, excluding e-Golf. See owner's literature or dealer for warranty exclusions and limitations. **Claim based on manufacturers' published data on length and transferability of car and SUV Bumper-to-Bumper/Basic warranty only. Not based on other separate warranties. †Genuine Volkswagen Accessories installed by an authorized Volkswagen dealer are covered for the greater of: (1) the accessory limited warranty period (12 months or 12,000 miles, whichever occurs first) from the time of purchase; or (2) the remainder of the New Vehicle Limited Warranty period. Non-genuine Volkswagen Accessories may be covered under separate manufacturer warranties, which can be found at VWAccessoriesWarranty.com. Visit VWAccessoriesWarranty.com or see participating Volkswagen dealer for complete details. ††Proper installation required. Professional installation may be recommended. See owner's literature and dealer for details.

©2018 Volkswagen Group of America, Inc. Printed in the USA. Volkswagen of America, Inc., believes the information and specifications in this brochure to be correct at the time of printing. Specifications, standard features, options, fabrics, and colors are subject to change without notice. Some features may be unavailable when your vehicle is built. Some vehicles are pictured with options that may be available at extra cost or may not be available on some models. Ask your dealer about the availability of options and verify that the vehicle you select includes the equipment you ordered. Tires are supplied and warranted by their manufacturer. †Volkswagen, the Volkswagen logo, and "Beetle" are registered trademarks of Volkswagen AG. Stormproof™ is a trademark of COVERKING, INC. MuddyBuddy® is a registered trademark of MacNeil Automotive Products Limited. "Bluetooth" is a registered trademark of Bluetooth SIG, Inc. Volkswagen navigation depends on the signals from the worldwide Global Positioning Satellite network. The vehicle's electrical system, and existing wireless and satellite technologies, must be available and operating properly for the system to function. The system is designed to provide you with suggested routes to location addresses, destinations, and other points of interest. Changes in street names, construction zones, traffic flow, points of interest, and other road system changes are beyond the control of Volkswagen of America, Inc. Complete detailed mapping of lanes, roads, streets, toll roads, highways, etc., is not possible, therefore you may encounter discrepancies between the mapping and your actual location. Please rely on your individual judgment in determining whether or not to follow a suggested navigation route. Periodically, the mapping is updated and an update will be required in order to maintain the latest navigation information available to us. Updates will be available for purchase from time to time at additional cost. For further information regarding any Volkswagen model, please call 1-800-DRIVE-VW or just look us up at vw.com.