

≡ 2016 Golf





# Golf



It's versatile. It's innovative. And it's a perfect example of how the modern hatch can think outside the box. Introducing the 2016 Volkswagen Golf. With stand-out-from-the-crowd styling and advanced technology, the Golf is ready to come turbocharging out the gate.\* Buckle up — your key to the city is here.

\*Always obey local speed and traffic laws.



## Style that really moves.

From cruising city streets to roaming rural roads, the Golf is perfectly fit and finished for any occasion. A sleek rear spoiler amps up the already smart, iconic exterior design. And style is illuminated with available Bi-Xenon headlights and LED Daytime Running Lights (DRL). Where your wandering heart takes you, the Golf will always look its incredibly stylish part.



### STANDARD FEATURES

**Iconic exterior design.** Introduced over 40 years ago, the design of the Golf, with its distinct rear C-pillars, has stood the test of time. It's what happens when you get it right the first time.

**Rear spoiler.** As if this car won't spoil you enough, added touches like the rear spoiler help make it more sporty and appealing, too.

### AVAILABLE FEATURES

**Bi-Xenon headlights with Adaptive Front-lighting System (AFS).** These headlights create bright beams of light to help improve visibility, lasting longer and using less energy than halogen bulbs. AFS allows the headlights to turn slightly with the direction of your steering at certain speeds. Lighting takes a brilliant turn.

**Integrated front foglights.** Designed right into the front bumper, these foglights not only add to the iconic look of the Golf, but they also come in handy when the fog rolls in.

**LED Daytime Running Lights (DRL).** LED accent lighting adds a sleek look to the front headlights.



SEL shown in Platinum Gray Metallic with Lighting Package and chrome exhaust tips



SEL shown in Titan Black leatherette with Driver Assistance Package

## Details tell the inside story.

The well-designed, thoughtful interior in the Golf may feel like your own mobile refuge from the outside world. Sit down in its available V-Tex leatherette seating surfaces and get a sense of the driver-focused interior that puts everything within easy reach. Access the impressive cargo space with a 60/40-split folding rear seat perfect for transporting your gear. It's as roomy and spacious as it is refined and sophisticated. More proof that beauty truly is on the inside.



### STANDARD FEATURES

**Chrome inlay accents.** The Golf has a sporty interior that looks and feels refined and polished, right down to the chrome accents.

**Driver-focused interior.** From the moment you get behind the wheel, you'll see how everything is within easy reach and angled toward the driver. The interior is ergonomically designed to help you command in comfort.

**Adjustable cargo floor.** You seek many adventures. And with 52.7 cubic feet of space with the rear seat folded and the adjustable cargo floor lowered, the Golf has plenty of room in store. Just fold down the 60/40-split folding rear seat and you're good to go.

### AVAILABLE FEATURES

**Heated front seats.** Who's turning up the heat? Most likely you and your passenger. You each get three settings to help keep you both comfy and cozy when the cold wind blows.

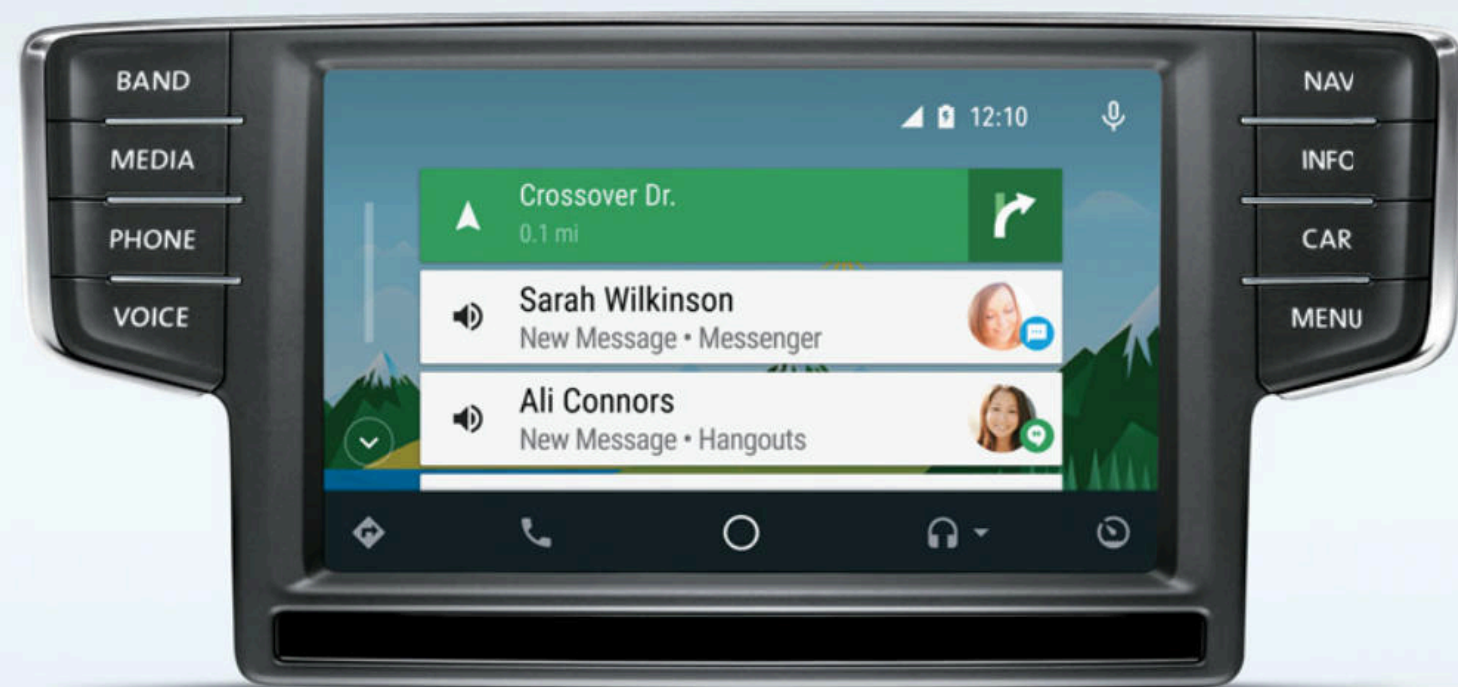
**12-way power driver's seat including power-adjustable lumbar support.** Get the comfiest seat in the Golf by adjusting it to your liking. With just one finger, you can adjust your seat in not one, not two, but 12 possible ways.

**Power tilting/sliding panoramic sunroof.** It tilts to help give you maximum exposure. You're one touch away from letting the sun shine on your drive.

**V-Tex leatherette seating surfaces.** They don't just look great. They're also comfortable and easy to keep clean.

**Keyless access with push-button start.** The key fob does the job. Leave it in your pocket. You can automatically unlock the door of your Golf as you grip the door handle. Then, once you're inside, with the push of the start button, your engine starts and you're ready to go.

Ahead of the crowd  
in more ways than one.



Sync up and dial in. Your compatible smartphone makes a genius connection. The available Volkswagen Car-Net<sup>®</sup> connected car suite brings you many ways to connect to your Golf. Take, for instance, VW Car-Net App-Connect, which can display select apps from your compatible smartphone onto your touchscreen.\* Once you plug your smartphone into the USB port, App-Connect lets you use your apps on the dash, using either Apple CarPlay<sup>™</sup>, Android Auto<sup>™</sup>, or MirrorLink<sup>®</sup>. Staying in touch has never been this easy.



#### STANDARD FEATURES

**Bluetooth<sup>®</sup> technology with audio streaming for compatible devices.** Connect your smartphone or other compatible device for talking and streaming. This way you can handle business without missing a beat.

**Composition Color touchscreen sound system.** Play it your way: CDs, USB audio, and your compatible smartphone tunes collection. You can access them through the touchscreen.

#### AVAILABLE FEATURES

**Driver Assistance Package.** Forward Collision Warning and Autonomous Emergency Braking (Front Assist). Blind Spot Monitor. Parking Steering Assistant (Park Assist). Rear Traffic Alert. Lane Departure Warning (Lane Assist). Adaptive Cruise Control (ACC). What does it all add up to? The ultimate in technologically advanced features and peace of mind.\*\*

**Park Distance Control (Park Pilot).** This feature displays a graphic on the touchscreen system, helping to display how close you may get to another object or vehicle when you're parking or leaving a spot.

**Rearview Camera System.** Hindsight is now foresight. The rearview camera helps you see and avoid obstacles when backing up, and can make parking easier.

**Climatronic<sup>®</sup> dual-zone automatic climate control.** Some like it hot. Some like it cold. Thankfully, with this feature, you and your passenger can both sit in your own comfort zone.

**Discover Media touchscreen navigation system.** Technology has an advanced touch. The updated navigation system boasts a touchscreen display that offers voice control, proximity sensors, and multiple compatible phone-pairing capabilities. It also offers a USB port and VW Car-Net App-Connect. Modern technology, more accessible.

**Volkswagen Car-Net Security & Service.** Provides a seamless link from your compatible devices — your smartphone, computer, or tablet — to your Golf. VW Car-Net Security & Service can call for help in an emergency, monitor speed and boundary alerts, check the status of your VW when you're away, and much more!†

**Volkswagen Car-Net App-Connect.** VW Car-Net App-Connect lets you link your compatible smartphone with Apple CarPlay, Android Auto, or MirrorLink to use select apps on the touchscreen display of your Volkswagen.† From streaming music and mobile maps, it can be accessed on the touchscreen.



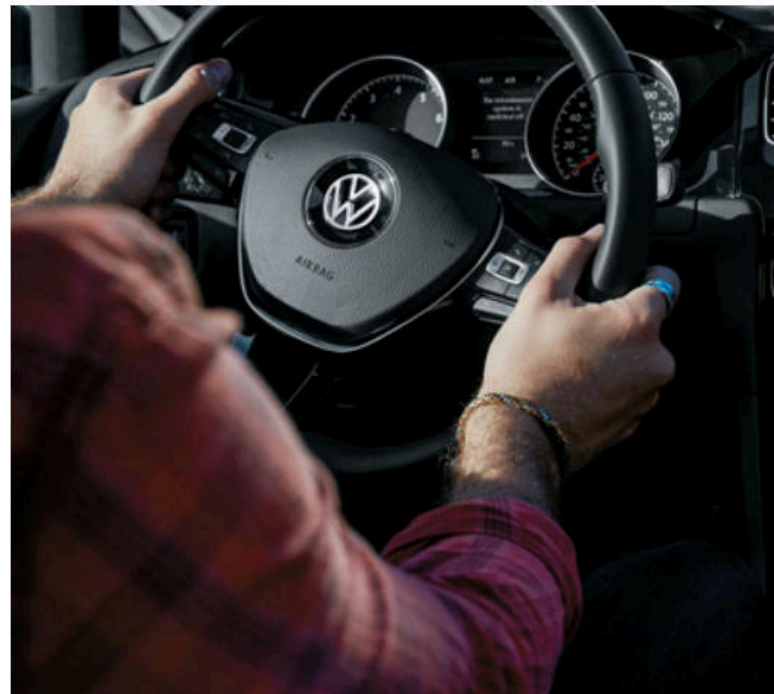
androidauto

MirrorLink

\*Always pay careful attention to the road, and do not drive while distracted. App-Connect features require compatible device, operating system, and mobile app. Standard text and data usage rates apply. See mobile app provider for terms and privacy. Android Auto is a trademark of Google Inc. Apple CarPlay is a trademark of Apple Inc. \*\*Driver Assistance features are not a substitute for attentive driving. See Owner's Manual for further details and important limitations. †Verizon Telematics, Inc., is the service provider for VW Car-Net Security & Service. Available on select trims. Trial or paid subscription required. These services require vehicle cellular connectivity and availability of vehicle GPS signal; certain services may collect location information. See Terms of Service, Privacy Policy, and other details at [www.vw.com/carnet](http://www.vw.com/carnet). Always pay careful attention to the road, and do not drive while distracted.

## Sit back and enjoy your seat.

With a standard turbocharged engine under the hood, the Golf will make urban escapades more fun. Powered by a turbocharged, 170-hp\* engine — and a 5-speed manual transmission or available automatic transmission — the Golf adds hustle to the city bustle. Take into consideration all the German-engineered refinement you would expect from a Volkswagen, and you've got the green light to sit back and enjoy every turbocharged second of urban fun.



SEL shown in Silk Blue Metallic with Lighting Package



**170**  
HORSEPOWER\*

**199**  
LB-FT OF TORQUE\*\*

### 1.8L TSI® engine

With the turbocharged 1.8L TSI engine, performance comes standard along with practicality. It's fast! It's fun. And it can get an EPA-estimated 37 hwy mpg!<sup>1</sup> In short, it's a turbocharged win-win.

### STANDARD FEATURES

**Sporty gauge cluster.** From the tachometer to the fuel gauge, every single square inch of the sporty gauge cluster has been thoughtfully designed and styled. It's attractive enough to make you want to stare.

**Cooling glovebox.** Luxuriously cool. Storing drinks and keeping them cool is now easy with a built-in vent inside the glovebox that can be opened or closed.

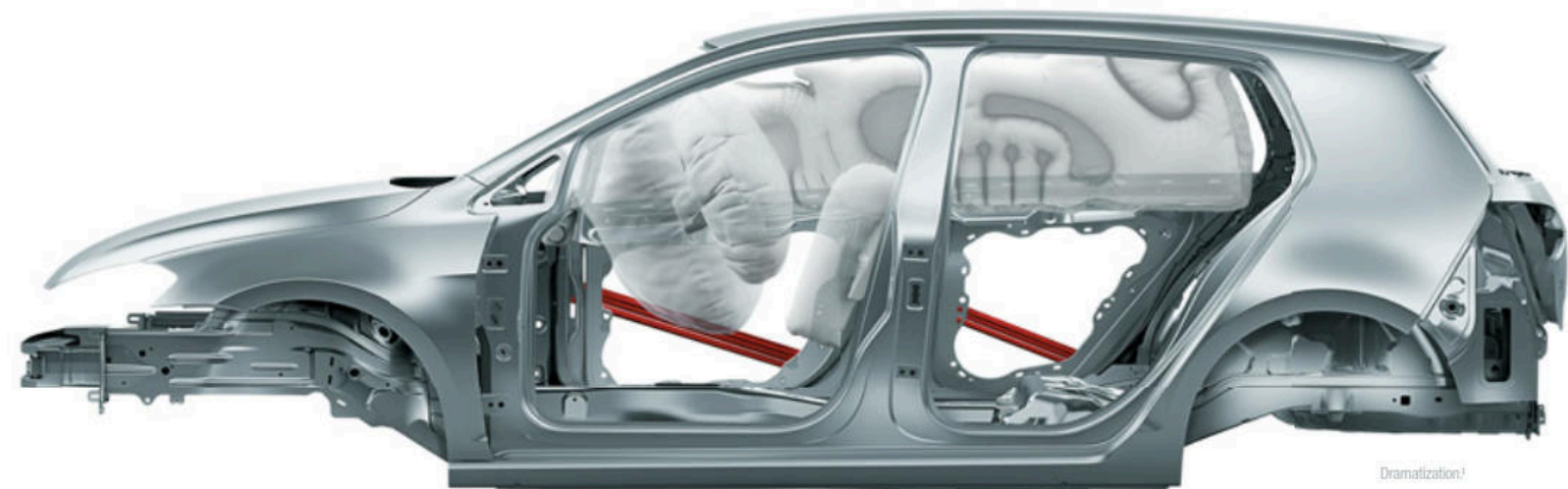
### AVAILABLE FEATURE

**DSG® automatic transmission.** Double your fun. This available transmission helps provide efficiency!<sup>1</sup> and seamless shifts in full automatic mode, or lets you shift manually if you choose.

**18" alloy wheels.** Sleek and eye-catching, these silver 18" alloy wheels will keep you rolling in style while you catch admiring glances along the way.

**Leather-wrapped sport steering wheel.** The leather-wrapped, flat-bottom wheel feels nice in more ways than one. Once you are hands-on, the multi-function controls let you rule the road, your tunes, and how you communicate, all at the same time.

\*Achieved with premium fuel. \*\*Automatic transmission only; 184 lb-ft of torque when equipped with manual transmission. <sup>1</sup>Always obey local speed and traffic laws. <sup>2</sup>25 city/37 highway mpg (2016 Golf 1.8L TSI with manual transmission). EPA estimates. Your mileage will vary and depends on several factors, including your driving habits and vehicle condition.



## And lastly, safety first.

With an advanced safety cage, the Automatic Post-Collision Braking System, and an Intelligent Crash Response System (ICRS)\* that can turn off the fuel pump, unlock the doors, and activate the hazard lights in the event of a collision. And last, but not least, the Golf earned the 2015 IIHS Top Safety Pick+\*\* for 4-door models, equipped with the optional Forward Collision Warning and Autonomous Emergency Braking (Front Assist) system.†

2015 IIHS TOP SAFETY PICK+†

### STANDARD FEATURES

**Safety cage.** The safety cage for the Golf has been designed to help protect you during front, rear, or side impacts. In addition, advanced thermoformed steel B-pillars offer strong reinforcements on top.

**Adaptive airbags.** Our airbags have been engineered to adapt to crash severity, and special door sensors will deploy Side Curtain Protection® airbags in the event of a side impact!†

**Automatic Post-Collision Braking System.** Not every collision brings a car to an immediate stop. That's why we engineered the Automatic Post-Collision Braking System. By automatically slowing down your car after a collision, you have a better opportunity to take control and help reduce the chance of any additional impacts.

**Intelligent Crash Response System (ICRS).** In the event of a collision that activates the vehicle's airbags,† the Intelligent Crash Response System can automatically disable the fuel pump, unlock all the doors, and turn on the hazard lights.\*

**Seven stability-enhancing systems.** From Electronic Brake-pressure Distribution (EBD), which helps maintain appropriate stopping power during a hard-braking situation, to Electronic Stability Control (ESC), which adjusts engine throttle and applies corrective forces to the wheels that need them most, there are seven systems in total to help you stay in control.

**Tire Pressure Monitoring System (TPMS).** The right amount of tire pressure is needed to help maximize your riding comfort. Thanks to this feature, you'll be alerted when your tire pressure is low and air needs to be added.

\*The Intelligent Crash Response System (ICRS) will only activate in a collision where the airbags deploy or safety belt pretensioners activate. Not all collisions cause airbags to deploy or safety belt pretensioners to activate. \*\*Top Safety Pick+™ based on good ratings in the moderate overlap front, side, roof strength, head restraint tests; no less than an acceptable rating in the small overlap front tests; and no less than an advanced rating for front crash prevention. For details, visit [www.iihs.org](http://www.iihs.org). †Driver Assistance features are not a substitute for attentive driving. See Owner's Manual for further details and important limitations. ‡Airbags are supplemental restraints only and will not deploy under all crash circumstances. Always use safety belts and seat children only in the rear, using restraint systems appropriate for their size and age. ††This is a dramatization and does not depict what will happen in a collision. All bags will not inflate in real-world collisions and if multiple bags do deploy they will be in various stages of inflating/deflating and will never be inflated at the same time.



# Golf Specs

EXTERIOR	GOLF 2-DR	S	SE	SEL
Halogen headlights with clear, lightweight, chip-resistant polycarbonate lenses and Daytime Running Lights (DRL)	●	●	●	●
Bi-Xenon high-intensity headlights with LED Daytime Running Lights (DRL) and Adaptive Front-lighting System (AFS)	-	-	LP	LP
Automatic headlights	-	-	●	●
Power-operated, heated side mirrors with integrated turn signals	●	●	●	●
Power tilting/sliding panoramic sunroof	-	SR	●	●
15" alloy wheels	●	●	-	-
17" alloy wheels	-	-	●	●
18" alloy wheels	-	-	-	●
Heated windshield washer nozzles	-	-	●	●
Halogen reflector lens foglights	-	-	●	●
PERFORMANCE	GOLF 2-DR	S	SE	SEL
1.8L TSI <sup>®</sup> , 16-valve, DOHC, in-line 4-cylinder turbocharged engine with direct injection and intercooler; 170 hp, <sup>*</sup> 184 lb-ft of torque (199 lb-ft of torque with available automatic trans.)	●	●	●	●
Power-assisted front vented disc brakes and rear solid disc brakes	●	●	●	●
Electromechanical power steering with variable assistance and active return	●	●	●	●
Independent suspension with front MacPherson struts and rear fully independent 4-link suspension	●	●	●	●
5-speed manual transmission	●	●	-	-
6-speed automatic transmission with manual and Sport mode	O	O	●	●
INTERIOR	GOLF 2-DR	S	SE	SEL
Climatic manual single-zone climate control with pollen filter	●	●	●	-
Climatronic <sup>®</sup> dual-zone automatic climate control	-	-	-	●
Interior ambient lighting	-	-	LP	●
Front center armrest, adjustable	●	●	●	●
Multi-function trip computer featuring compass, trip time/length, average trip speed, average trip fuel consumption, current fuel consumption, miles to empty, radio station display, personalizing function	●	●	●	●
2 radio-frequency remote transmitter key fobs with lock, unlock, rear hatch release, and panic button for central locking	●	●	●	●
LED reading lights: 2 front, 2 rear	-	-	LP	●
Driver and passenger visor vanity mirrors, illuminated and with covers	●	●	●	●
Auto-dimming rearview mirror	-	-	DAP	DAP
6-way manually adjustable front seats, fully reclining and height-adjustable	●	●	-	-
6-way partial power-adjustable front seats	-	4DR	●	-
12-way power-adjustable driver's seat; partial power-adjustable front passenger seat	-	-	-	●
Lumbar support, adjustable for driver and front passenger seats	●	●	●	●
Heated front seats	-	-	●	●
60/40-split folding rear seat with center armrest and pass-through	●	●	●	●
Leather-wrapped sport steering wheel, height-adjustable, with telescopic steering column	-	-	●	●
Leather-wrapped gearshift knob	-	●	●	●
Steering-wheel-mounted paddle shifters	-	O	O	O
3 12V power outlets: 1 in center console, 1 in center armrest, 1 in trunk	●	●	●	●
Glovebox with cooling feature	●	●	●	●
4 cupholders: 2 front, 2 rear	●	●	●	●
Cloth seating surfaces	●	●	-	-
V-Tex leatherette seating surfaces	-	-	●	●
Comfort sport seats with V-Tex leatherette seating surfaces	-	-	-	●
Storage compartment under driver's seat	●	●	●	-
Adjustable cargo floor	●	●	●	●
Power windows with pinch protection and automatic 1-touch feature, operable on all doors	●	●	●	●

- Standard, no additional cost
- Not available
- O Optional, additional cost
- 4DR Standard on 4-Door models only

- LP Available with Lighting Package
- SR Available on S with Sunroof
- DAP Available with Driver Assistance Package

TECHNOLOGY	GOLF 2-DR	S	SE	SEL
Composition Color touchscreen sound system, MP3/WMA-compatible with CD player, AM/FM radio, and SD memory card reader	●	-	-	-
Composition Media touchscreen system with proximity sensor, MP3/WMA/FLAC-compatible CD player, AM/FM/HD Radio, SD memory card reader, and voice control	-	●	●	-
Discover Media touchscreen navigation system with proximity sensor, MP3/WMA/FLAC-compatible CD player, AM/FM/HD Radio, SD memory card reader, and voice control	-	-	-	●
Volkswagen Car-Net <sup>®</sup> App-Connect**	-	●	●	●
Volkswagen Car-Net Guide & Inform <sup>†</sup>	-	-	-	●
Volkswagen Car-Net Security & Service <sup>††</sup>	-	●	●	●
SiriusXM <sup>®</sup> Satellite Radio with 3-month trial subscription <sup>‡</sup>	-	●	●	●
USB port	●	●	●	●
Bluetooth <sup>®</sup> technology with audio streaming for compatible devices	●	●	●	●
Fender <sup>®</sup> Premium Audio System with 9 speakers including subwoofer	-	-	●	●
Keyless access with push-button start	-	-	●	●
Rearview Camera System	-	●	●	●
Adaptive Cruise Control (ACC) <sup>‡‡</sup>	-	-	DAP	DAP
Forward Collision Warning and Autonomous Emergency Braking (Front Assist) <sup>‡‡</sup>	-	-	DAP	DAP
Blind Spot Monitor <sup>‡‡</sup>	-	-	DAP	DAP
Rear Traffic Alert <sup>‡‡</sup>	-	-	DAP	DAP
Lane Departure Warning (Lane Assist) <sup>‡‡</sup>	-	-	DAP	DAP
Park Distance Control (Park Pilot)	-	-	DAP	DAP
Parking Steering Assistant (Park Assist) <sup>‡‡</sup>	-	-	DAP	DAP
SAFETY	GOLF 2-DR	S	SE	SEL
Driver and passenger front and side thorax airbag supplemental restraint systems <sup>§</sup>	●	●	●	●
Side Curtain Protection <sup>†††</sup> head airbags, front and rear <sup>§</sup>	●	●	●	●
Front seat safety belt pretensioners with load limiters	●	●	●	●
Height-adjustable front 3-point safety belts and 3 rear 3-point safety belts	●	●	●	●
LATCH (Lower Anchors and Tethers for Children) child seat anchor points	●	●	●	●
Automatic locking feature (doors lock when vehicle reaches 8 mph, unlock automatically upon airbag deployment)	●	●	●	●
Automatic Post-Collision Braking System	●	●	●	●
Anti-lock Braking System (ABS), Electronic Brake-pressure Distribution (EBD), and Hydraulic Brake Assist (HBA)	●	●	●	●
Intelligent Crash Response System (ICRS) <sup>§§</sup>	●	●	●	●
Tire Pressure Monitoring System (TPMS)	●	●	●	●
QUALITY	GOLF 2-DR	S	SE	SEL
12-year/120,000-mile (whichever occurs first) Limited Warranty Against Corrosion Perforation <sup>¶</sup>	●	●	●	●
5-year/60,000-mile (whichever occurs first) Powertrain Limited Warranty <sup>¶</sup>	●	●	●	●
3-year/36,000-mile (whichever occurs first) New Vehicle Limited Warranty <sup>¶</sup>	●	●	●	●
3-year/36,000-mile (whichever occurs first) Roadside Assistance <sup>¶¶</sup>	●	●	●	●
DIMENSIONS				
Wheelbase	103.8 in. (2,637 mm)			
Length	167.5 in. (4,255 mm)			
Width	2-Door 70.5 in. (1,790 mm) 4-Door 70.8 in. (1,799 mm)			
Height	57.2 in. (1,452 mm)			
Cargo volume (with parcel shelf/without parcel shelf)	13.7 cu. ft. (0.39 cu. m)/22.8 cu. ft. (0.58 cu. m)			
Cargo volume (with rear seats folded down and adjustable cargo floor lowered)	52.7 cu. ft. (1.34 cu. m)			

# Wheels and Colors

## STANDARD WHEELS

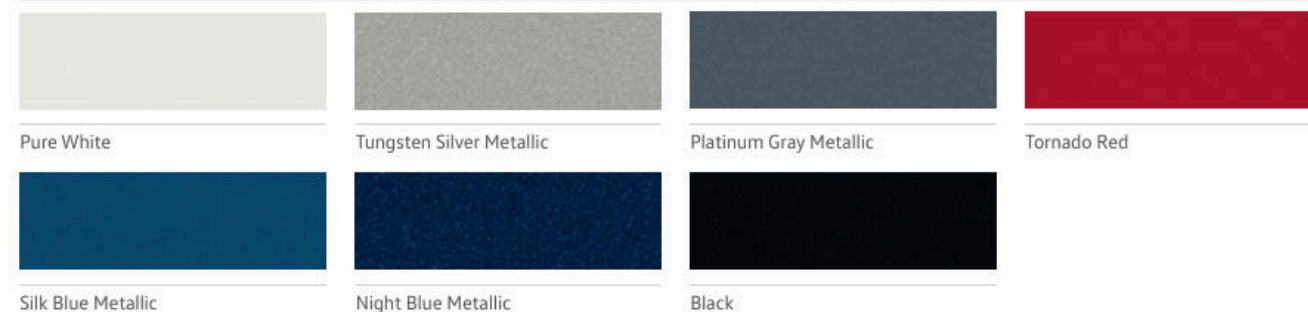


15" Lyon

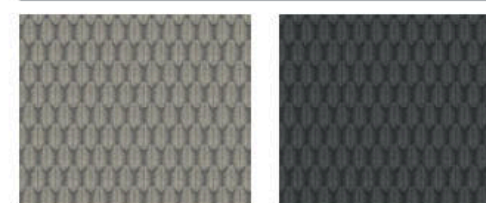
17" Madrid

18" Durban

## EXTERIOR COLORS



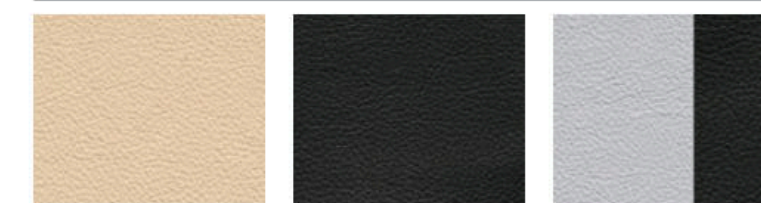
## INTERIOR CLOTH



Beige

Titan Black

## INTERIOR V-TEX LEATHERETTE



Beige

Titan Black

Quartz and Titan Black Two-Tone

# Packages

## LIGHTING PACKAGE

Bi-Xenon high-intensity headlights with Adaptive Front-lighting System (AFS) and LED Daytime Running Lights (DRL); interior ambient lighting; LED reading lights

Available on SE

## LIGHTING PACKAGE

Bi-Xenon high-intensity headlights with Adaptive Front-lighting System (AFS) and LED Daytime Running Lights (DRL)

Available on SEL

## DRIVER ASSISTANCE PACKAGE

Forward Collision Warning and Autonomous Emergency Braking (Front Assist); Park Distance Control (Park Pilot); Parking Steering Assistant (Park Assist); Adaptive Cruise Control (ACC); Blind Spot Monitor; Rear Traffic Alert; Lane Departure Warning (Lane Assist); auto-dimming rearview mirror

Available on SE, SEL

Not all combinations of exterior paint and interior seating surfaces are available.

\*Achieved with premium fuel. \*\*Always pay careful attention to the road, and do not drive while distracted. App-Connect features require compatible device, operating system, and mobile app. Standard text and data usage rates apply. See mobile app provider for terms and privacy. Apple CarPlay is a trademark of Apple Inc. Android Auto is a trademark of Google Inc. †Vehicle includes 3-month no-charge SiriusXM Travel Link trial subscription, which has separate terms and conditions. See www.siriusxm.com/infotainment for details; 4-year trial subscription for SiriusXM Traffic applies to original owner only. ††Verizon Telematics, Inc., is the service provider for VW Car-Net Security & Service. Available on select trims. Trial or paid subscription required. These services require vehicle cellular connectivity and availability of vehicle GPS signal; certain services may collect location information. See Terms of Service, Privacy Policy, and other details at www.vw.com/carnet. Always pay careful attention to the road, and do not drive while distracted. ‡SiriusXM Satellite Radio, SiriusXM Traffic, and SiriusXM Travel Link subscriptions are sold separately or as a package after trial period and are continuous until you call SiriusXM at 1-866-635-2349 to cancel. See Customer Agreement for complete terms and more information at www.siriusxm.com. ©2015 Sirius XM Radio Inc. Sirius, XM, and all related marks and logos are trademarks of Sirius XM Radio Inc. ‡‡Driver Assistance features are not a substitute for attentive driving. See Owner's Manual for further details and important limitations. †Airbags are supplemental restraints only and will not deploy under all crash circumstances. Always use safety belts and seat children only in the rear, using restraint systems appropriate for their size and age. †††The Intelligent Crash Response System (ICRS) will only activate in a collision where the airbags deploy or safety belt pretensioners activate. Not all collisions cause airbags to deploy or safety belt pretensioners to activate. †See dealer or warranty booklet for details; some restrictions apply. †††Roadside Assistance provided by Allstate.



# Accessories. For and by Volkswagen.

A diverse lineup calls for an even more diverse array of Volkswagen Accessories. That's why these available items are specially designed and created to fit your Volkswagen. So whether you're preparing for some outings or going for style points, your VW can be customized to your lifestyle.

## ACCESSORIES



18" Montauk Wheels



Base Carrier Bars and Fork Mount Bike Holder Attachment



Body Styling Kit



Chrome Exhaust Tips



Monster Mats® and MojoMats®



MuddyBuddy™ Cargo Liner and CARGOTECH® Blocks



Add-On Rear Hatch Spoiler



Soundbox®

Volkswagen Accessories installed by an authorized Volkswagen dealer are covered for the greater of: (1) the accessory limited warranty period (12 months or 12,000 miles, whichever occurs first) from the time of purchase; or (2) the remainder of the New Vehicle Limited Warranty period (3 years or 36,000 miles, whichever occurs first). See dealer for details.

©2015 Volkswagen of America, Inc. Printed in the U.S.A. Volkswagen of America, Inc., believes the specifications in this brochure to be correct at the time of printing. Specifications, standard equipment, options, fabrics, and colors are subject to change without notice. Some features may be unavailable when your vehicle is built. Some vehicles are pictured with options that may be available at extra cost or may not be available on some models. Ask your dealer about availability of options and verify that the vehicle you ordered includes the equipment you ordered. Tires are supplied and warranted by their manufacturer. "Volkswagen," the Volkswagen logo, "Golf," and "DSG" are registered trademarks of Volkswagen AG. "Tiptronic" is a registered trademark of Dr. Ing. h.c. F. Porsche AG. "Bluetooth" is a registered trademark of Bluetooth SIG, Inc. "iPhone" is a registered trademark of Apple, Inc. All rights reserved. iPhone is not included. "MojoMats" and "Monster Mats" are registered trademarks of Volkswagen Group of America, Inc. MuddyBuddy™ and CARGOTECH® are registered trademarks of MacNeil Automotive Products Limited. MuddyBuddy Trunk Liners by WeatherTech® are covered by a WeatherTech limited warranty for three years from the date of purchase. Please visit [www.weathertech.com](http://www.weathertech.com) for additional information. Soundbox by HELIX® is a registered trademark of Audiotec Fischer GmbH. Volkswagen navigation depends on the signals from the worldwide Global Positioning Satellite network. The vehicle's electrical system, and existing wireless and satellite technologies, must be available and operating properly for the system to function. The system is designed to provide you with suggested routes to location addresses, destinations, and other points of interest. Changes in street names, construction zones, traffic flow, points of interest, and other road system changes are beyond the control of Volkswagen of America, Inc. Complete detailed mapping of lanes, roads, streets, toll roads, highways, etc., is not possible, therefore you may encounter discrepancies between the mapping and your actual location. Please rely on your individual judgment in determining whether or not to follow a suggested navigation route. Periodically, the mapping is updated, and a new DVD will be required in order to maintain the latest navigation information available to us. These will be available for purchase from time to time at additional cost. For further information regarding any Volkswagen model, please call 1-800-DRIVE-VW, or just look us up at [vw.com](http://vw.com).