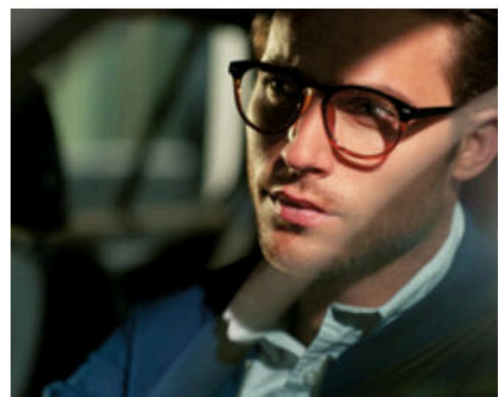
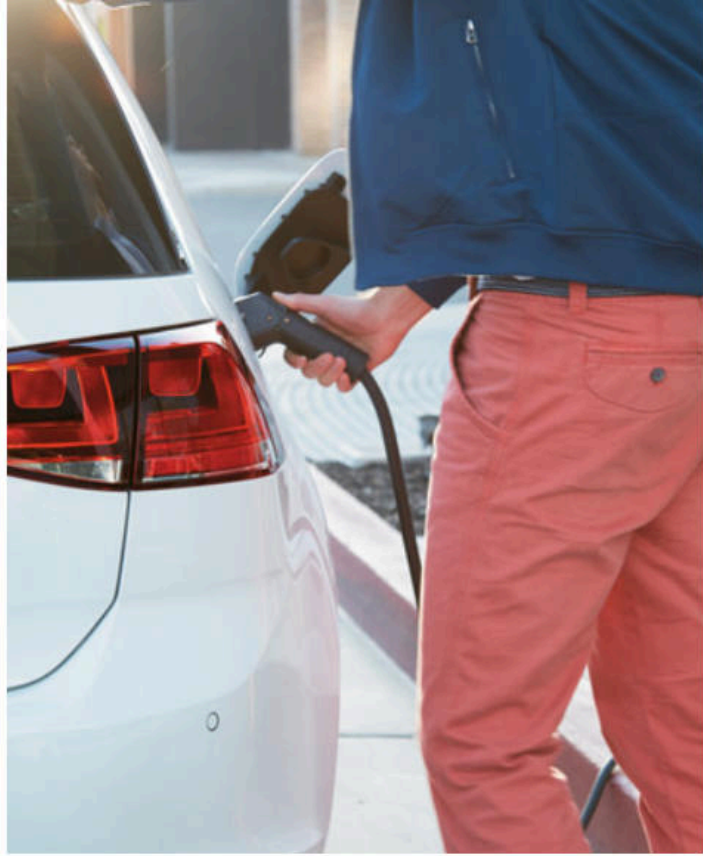


≡ 2016 e-Golf





e-Golf



This isn't your typical electric car. It's a Volkswagen, which also happens to be electric. Meaning it has German-engineered sporty performance, uncompromised versatile interior space, and a beloved hatch design. And since it's got a powerful electric motor under the hood, the e-Golf* puts the "e" in efficient.**

*The e-Golf vehicle is only available at participating dealers in select states. **126 city/105 highway MPGe EPA estimates (2015 e-Golf, automatic transmission). 2016 EPA estimates not available at time of publication. See www.fueleconomy.gov for updated information. Actual mileage will vary and depends on several factors, including driving and charging habits, weather and temperature, battery age, and vehicle condition. Battery capacity decreases with time and use. See Owner's Manual for details.



Designed to get you amped.

Sleek, smart, and sophisticated. The e-Golf sports many design cues (like the iconic rear hatch) that have been distinguishing characteristics of the Golf family for over 40 years. Though very familiar in appearance, the e-Golf exhibits some unique design details of its own. The subtle blue accents, the aerodynamic alloy wheels, and the C-signature LED Daytime Running Lights. While the e-Golf makes a subtle hum, it sure does shout iconic hatch.



STANDARD FEATURES

C-signature LED Daytime Running Lights (DRL). These lights bring a unique style exclusive to the e-Golf. Beautiful and bold, they'll light up your driving spirit.

Automatic headlights with Coming/Leaving Home feature. Need a little extra light when walking away from or towards your e-Golf? You can customize how long your headlights stay on after you lock or unlock your car. These lights automatically help light the way, your way.

Integrated rear spoiler. As if this car won't spoil you enough, added touches like the rear spoiler help make it more appealing, too.

16" Astona aerodynamic alloy wheels. Another way the e-Golf proves that efficiency* can still be in style. These sleek, sharp-looking wheels were specially designed for the e-Golf.

AVAILABLE FEATURES

Full LED headlights with blue accents. Turn heads and illuminate the road ahead with futuristic-looking, long-lasting LED headlights. The e-Golf offers full LED headlights in low and high beams—100% LED.**

Combined Charging System (CCS). Several ways to charge. One convenient port to plug in. The e-Golf comes with a charging system that's compatible with many charging stations in the U.S. Charge and charge away.

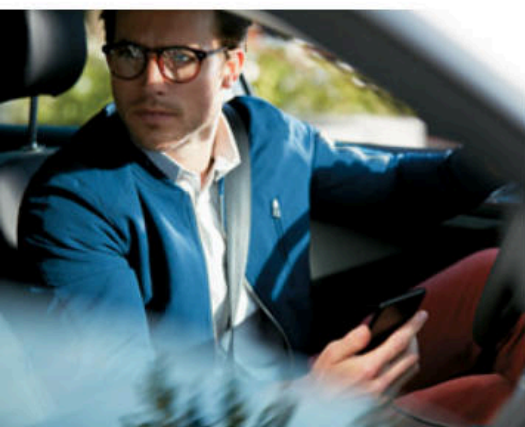


SEL Premium shown in Pure White

*126 city/105 highway MPGe EPA estimates (2015 e-Golf, automatic transmission). 2016 EPA estimates not available at time of publication. See www.fueleconomy.gov for updated information. Actual mileage will vary and depends on several factors, including driving and charging habits, weather and temperature, battery age, and vehicle condition. Battery capacity decreases with time and use. See Owner's Manual for details. **Based on manufacturers' published data available at time of publication comparing all-electric vehicles available in the United States.



SEL Premium shown in Titan Black leatherette



An energizing atmosphere.

Once you're done wondering how we fit in the batteries without sacrificing cargo space, sink into the available leatherette seating surfaces and grab the available multi-function sporty steering wheel. You're instantly put right in the center of the all-electric action. With this kind of sophistication and versatility, you might even forget that this hatch is electric.

STANDARD FEATURES

Uncompromised cargo space. We designed the e-Golf to not invade the 52.7 cu. ft. of cargo space with rear seats folded and adjustable cargo floor lowered. We weren't about to sacrifice your comfort bubble.

Unique interior accents. The e-Golf gets extra interior details. Like the blue accents on the shift knob and the e-Golf emblem in the front of the shifter. An atmosphere that boasts it's ready for liftoff.

AVAILABLE FEATURES

Climatronic® dual-zone automatic climate control. Stay in your comfort zone behind the wheel while your passengers stay in theirs. Since the A/C compressor is electric, you can all enjoy a cool, air-conditioned cabin comfortably.

Heated front seats. Thanks to these heated seats, you can keep warm on cold nights or chilly mornings. The three different settings will help you easily find your comfort zone.

Leather-wrapped multi-function steering wheel. Grab the multi-function steering wheel and control your tunes, and how you communicate. It feels nice in more ways than one, especially since it's leather-wrapped.

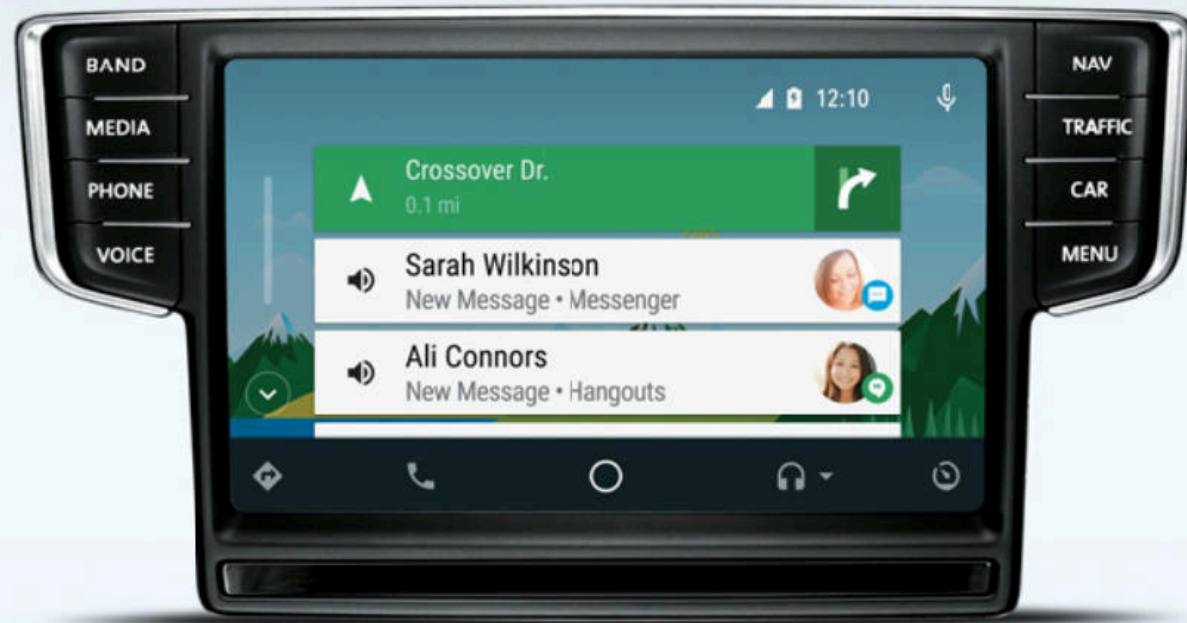
Zero emissions.



Watts of fun.



Dashboard, meet smartphone.



Of course our electric vehicle is going to be programmed with some of the latest car technology. The available Volkswagen Car-Net[®] connected car suite brings you many ways to connect to your e-Golf. Take, for instance, VW Car-Net App-Connect, which can display select apps from your compatible smartphone onto your touchscreen.* Once you plug your smartphone into the USB port, App-Connect lets you use your apps on the dash, using either Apple CarPlay[™], Android Auto[™], or MirrorLink[®]. Staying in touch has never been this easy.



STANDARD FEATURES

Volkswagen Car-Net Security & Service. Provides a seamless link from almost any of your compatible devices — your smartphone, computer, or tablet — to your Volkswagen. VW Car-Net Security & Service can call for help in an emergency, monitor speed and boundary alerts, check the status of your VW when you're away, and much more.**

Volkswagen Car-Net App-Connect. VW Car-Net App-Connect lets you link your compatible smartphone with Apple CarPlay, Android Auto, or MirrorLink to use select apps on the touchscreen display of your Volkswagen.* From streaming music and mobile maps, it can be accessed on the touchscreen.



androidauto

MirrorLink

Composition Media touchscreen sound system. The e-Golf is now in touch. Literally. With its advanced touchscreen sound system, you can control your media, settings, and the Volkswagen Car-Net App-Connect* feature, which can sync up compatible smartphones and display content on the dash. Be in command with one fingertip.

Rearview Camera System. Hindsight is now foresight. The rearview camera helps you see and avoid obstacles when backing up, and it can make parking easier.

Keyless access with push-button start. The key fob does the job. Leave it in your pocket. You can automatically unlock the door of your e-Golf as you grip the door handle. Then, once you're inside, with the press of the brake and the push of the start button, your engine turns on and you're ready to go.

AVAILABLE FEATURES

Discover Pro 8" touchscreen navigation. This system has features specifically for the e-Golf, like charging location info and Range Monitor, which gives you range visualization on a map as well as battery stats.

e-Manager mobile app. You can operate the A/C from your phone, which is cool. You can also monitor battery charge status, and it can help you locate the nearest EV charging station.

Volkswagen Car-Net Guide & Inform. With an available 4-year trial subscription to SiriusXM Traffic[™] that offers real-time traffic information, you get your info front and center.

Park Distance Control (Park Pilot). This feature displays a graphic on the touchscreen system, helping display how close you may get to another object or vehicle when you're parking or leaving a spot.

*Always pay careful attention to the road, and do not drive while distracted. App-Connect features require compatible device, operating system, and mobile app. Standard text and data usage rates apply. See mobile app provider for terms and privacy. Apple CarPlay is a trademark of Apple Inc. Android Auto is a trademark of Google Inc. **VW Car-Net Security & Service services provided by Verizon Telematics, Inc. Available on select trims. Trial or paid subscription required. VW Car-Net Security & Service services require vehicle cellular connectivity and availability of vehicle GPS signal; certain services may collect location information. See Terms of Service, Privacy Policy, and other details at www.vw.com/carnet. Always pay careful attention to the road, and do not drive while distracted. *Vehicle includes 3-month no-charge SiriusXM Travel Link trial subscription, which has separate terms and conditions. See www.siriusxm.com/infotainment for details; 4-year trial subscription for SiriusXM Traffic applies to original owner only.



SEL Premium shown in Pure White

Give the city a jolt of energy.

Want to know why the e-Golf drives a lot like the Golf? The e-Golf has a powerful electric motor that delivers an impressive 199 lb-ft of torque. That's more torque than the BMW i3.* It's how Volkswagen feels electric cars should feel. And since you can get up to 83 miles on a single charge,** you'll be making plenty of trips.



85 kW AC electric motor

This electric motor delivers power straight to the wheels when you hit the pedal. And since there aren't any moving pistons or cylinders, the all-electric 115 horsepower is ready once you hit the start button. That's more horsepower than the Nissan Leaf.[†]

115
HORSEPOWER

199
LB-FT OF TORQUE

Up to **83 miles per charge.****

STANDARD FEATURES

Three driving modes. Start the car and you'll experience e-Golf performance in Normal mode. Switch to Eco mode for a happy medium of performance and efficiency![†] Or to help maximize your range,** put it into Eco+ mode for more conservative battery usage. So pick a mode. Any mode.

AVAILABLE FEATURES

Three selectable levels of regenerative braking. When you hit the brakes, or simply lift your foot off the pedal, the e-Golf converts the energy into electricity to help recharge its batteries. The higher the regenerative level you select, the more the car will slow down when you lift your foot off the pedal.

DC Charging![†] Time to take charge. This gives you DC charging capabilities, which means you'll have access to some of the fastest charging stations out there.

*Based on manufacturers' published data available at the time of publication. "BMW" and "i3" are registered trademarks of Bayerische Motoren Werke AG. **2015 e-Golf EPA estimated range is 83 miles. Actual mileage and range will vary and depend on several factors including driving and charging habits, weather and temperature, battery age, and vehicle condition. Battery capacity decreases with time and use. See Owner's Manual for details. †Based on manufacturers' published data available at the time of publication. "Nissan" and "Leaf" are registered trademarks of Nissan Motor Co., Ltd. ††126 city/105 highway MPGe EPA estimates (2015 e-Golf, automatic transmission). 2016 estimates not available at time of publication. See www.fueleconomy.gov for updated information. Actual mileage will vary and depend on several factors, including driving and charging habits, weather and temperature, battery age, and vehicle condition. Battery capacity decreases with time and use. See Owner's Manual for details. †Available on SE models; standard on SEL Premium.

e-Golf Specs

- Standard, no additional cost
- Not Available
- DCP Available with DC Quick Charge Package

EXTERIOR	SE	SEL Prem
Automatic headlights with Coming/Leaving Home feature	●	●
LED headlights with blue accents	-	●
e-Golf front grille with blue accent	●	●
e-Golf design-integrated LED Daytime Running Lights (DRL)	●	●
Heated power side mirrors with integrated turn signals	●	●
Integrated rear spoiler	●	●
16" aerodynamic Astona alloy wheels with all-season low-rolling-resistance tires	●	●
Rain-sensing windshield wipers	●	●
TECHNOLOGY	SE	SEL Prem
Composition Media touchscreen sound system with proximity sensor, MP3/WMA/FLAC-compatible CD player, AM/FM/HD Radio™, SD memory card reader, and voice control	●	-
Discover Pro 8-inch touchscreen navigation system with proximity sensor, MP3/WMA/FLAC-compatible CD player, DVD and video playback, AM/FM/HD Radio, SD memory card reader, and voice control	-	●
SiriusXM® Satellite Radio with 3-month trial subscription*	●	●
Bluetooth® technology with audio streaming for compatible devices	●	●
USB port	●	●
Volkswagen Car-Net® App-Connect**	●	●
Volkswagen Car-Net Security & Service†	●	●
Volkswagen Car-Net Guide & Inform††	-	●
Rearview Camera System	●	●
Keyless access with push-button start	●	●
Park Distance Control (Park Pilot)	-	●
INTERIOR	SE	SEL Prem
Climatronic® dual-zone automatic climate control	●	●
Color multi-function trip computer	●	●
Self-dimming interior rearview mirror with on/off switch	-	●
2 12V power outlets: 1 in front center console, 1 in cargo area	●	●
Carpeted floor mats	●	●
Interior ambient lighting	-	●
Heated front seats	●	●
Cloth seating surfaces	●	-
V-TEX leatherette seating surfaces	-	●
Leather-wrapped, multi-function steering wheel, height-adjustable with telescopic steering column	-	●
Leather-wrapped shift knob	●	●
Cruise control	-	●
Lockable glovebox with cooling feature	●	●
Power windows with pinch protection and automatic 1-touch feature	●	●
Adjustable cargo floor	●	●
6-way partial power-adjustable front seats	●	●
Adjustable lumbar support for driver and front passenger seats	●	●

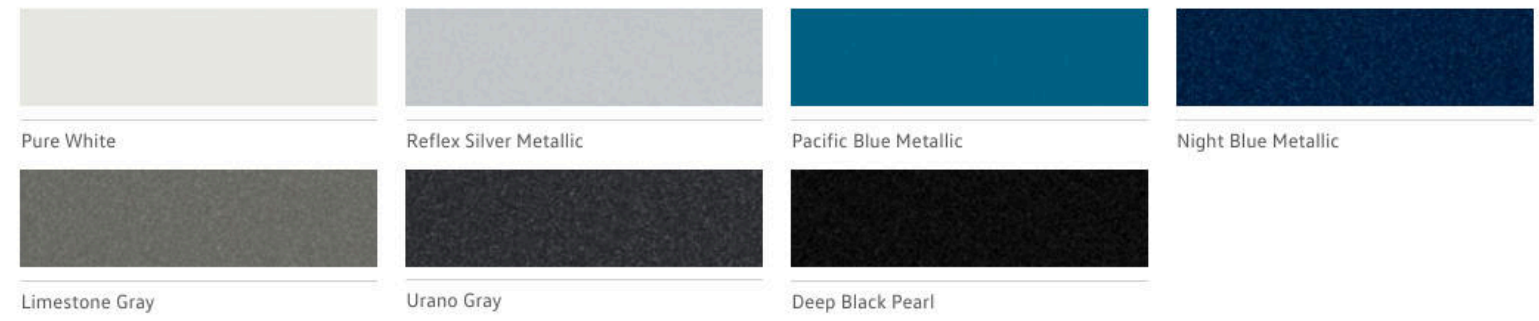
PERFORMANCE	SE	SEL Prem
85 kW AC synchronous electric motor, 115 hp, 199 lb-ft (270 Nm) of torque	●	●
24.2 kWh lithium-ion (Li-ion) battery	●	●
7.2 kW on-board charger	DCP	●
Combined Charging System (CCS) with DC charging capability‡	DCP	●
3.6 kW on-board charger	●	-
Speed-variable power steering	●	●
Single-speed automatic transmission	●	●
Independent front MacPherson struts and independent rear 4-link suspension	●	●
3 driving modes: Normal, Eco, and Eco+	●	●
3 selectable levels of regenerative braking	●	●
Electric parking brake	●	●
XDS® (Cross Differential System)	●	●
SAFETY	SE	SEL Prem
Crash-optimized front end	●	●
Driver and passenger front and side thorax airbag supplemental restraint system††	●	●
Side Curtain Protection® airbags, front and rear††	●	●
3-point safety belts for all seating positions, including safety belt pretensioners for driver and front passenger	●	●
LATCH (Lower Anchors and Tethers for CHildren) child seat anchor points	●	●
Anti-lock Braking System (ABS), Electronic Brake-pressure Distribution (EBD), and Hydraulic Brake Assist (HBA)	●	●
Automatic Post-Collision Braking System	●	●
Intelligent Crash Response System (ICRS)§	●	●
Tire Pressure Monitoring System (TPMS)	●	●
Electronic Stability Control (ESC), Anti-Slip Regulation (ASR), Electronic Differential Lock (EDL), and Engine Braking Assist (EBA)	●	●

Wheels and Colors

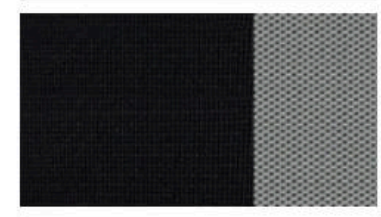


16" Astona

EXTERIOR COLORS



INTERIOR CLOTH



Titan Black and Gray Two-Tone

INTERIOR V-TEX LEATHERETTE



Titan Black

Beige

Not all combinations of exterior paint and interior seating surfaces are available.

*SiriusXM Satellite Radio, SiriusXM Traffic, and SiriusXM Travel Link subscriptions are sold separately or as a package after trial period and are continuous until you call SiriusXM at 1-866-635-2349 to cancel. See Customer Agreement for complete terms and more information at www.siriusxm.com. ©2015 Sirius XM Radio Inc. Sirius, XM, and all related marks and logos are trademarks of Sirius XM Radio Inc. **App-Connect features require compatible device, operating system, and mobile app. Standard text and data usage rates apply. See mobile app provider for terms and privacy. Apple CarPlay is a trademark of Apple Inc. Android Auto is a trademark of Google Inc. †VW Car-Net Security & Service services provided by Verizon Telematics, Inc. Trial or paid subscription required to access all features. VW Car-Net Security & Service services require vehicle cellular connectivity and availability of vehicle GPS signal; certain services may collect location information. See Terms of Service, Privacy Policy, and other details at www.vw.com/carnet. Always pay careful attention to the road, do not drive while distracted. ††Vehicle includes 4-year no-charge SiriusXM Traffic trial subscription, which has separate terms and conditions. See www.siriusxm.com/infotainment for details. 4-year trial subscription for SiriusXM Traffic applies to original owner only. ‡Requires charging at select DC fast charging stations. Frequent and consecutive high-voltage charging (including DC charging) can permanently decrease the capacity of the high-voltage battery. See Owner's Manual for details. §Airbags are supplemental restraints only and will not deploy under all crash circumstances. Always use safety belts and seat children only in the rear, using restraint systems appropriate for their size and age. ¶The Intelligent Crash Response System (ICRS) will only activate in a collision where the airbags deploy or safety belt pretensioners activate. Not all collisions cause airbags to deploy or safety belt pretensioners to activate.



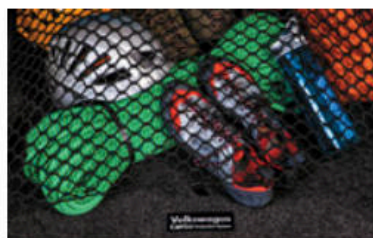
Accessories. For and by Volkswagen.

A diverse lineup calls for an even more diverse array of Volkswagen Accessories. That's why these available items are specially designed and created to fit your Volkswagen. So whether you're preparing for some outings or going for style points, your VW can be customized to your lifestyle.

ACCESSORIES



Base Carrier Bars and Fork Mount Bike Holder Attachments



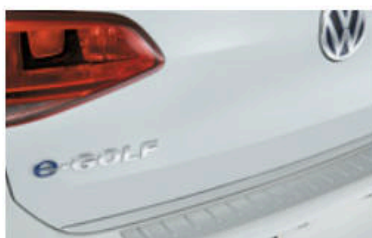
Luggage Net



Chrome Look Rear Accent Strip



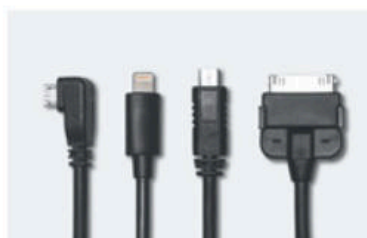
Heavy Duty Trunk Liner with CarGo Blocks



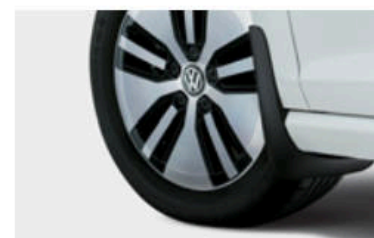
Rear Bumper Protection Plate



First Aid Kit



Digital Media Adapter Cables



Splash Guards

Volkswagen Accessories installed by an authorized Volkswagen dealer are covered for the greater of: (1) the accessory limited warranty period (12 months or 12,000 miles, whichever occurs first) from the time of purchase; or (2) the remainder of the New Vehicle Limited Warranty period (3 years or 36,000 miles, whichever occurs first). See dealer for details.

©2015 Volkswagen of America, Inc. Printed in the U.S.A. Volkswagen of America, Inc., believes the specifications in this brochure to be correct at the time of printing. Specifications, standard equipment, options, fabrics, and colors are subject to change without notice. Some features may be unavailable when your vehicle is built. Some vehicles are pictured with options that may be available at extra cost or may not be available on some models. Ask your dealer about availability of options and verify that the vehicle you ordered includes the equipment you ordered. Tires are supplied and warranted by their manufacturer. "Volkswagen," the Volkswagen logo, "Car-Net," "e-Golf," "DSG," and "TSI" are registered trademarks of Volkswagen AG. "Bluetooth" is a registered trademark of Bluetooth SIG, Inc. "iPhone" is a registered trademark of Apple, Inc. All rights reserved. iPhone not included. Volkswagen navigation depends on the signals from the worldwide Global Positioning Satellite network. The vehicle's electrical system, and existing wireless and satellite technologies, must be available and operating properly for the system to function. The system is designed to provide you with suggested routes to location addresses, destinations, and other points of interest. Changes in street names, construction zones, traffic flow, points of interest, and other road system changes are beyond the control of Volkswagen of America, Inc. Complete detailed mapping of lanes, roads, streets, toll roads, highways, etc., is not possible, therefore you may encounter discrepancies between the mapping and your actual location. Please rely on your individual judgment in determining whether or not to follow a suggested navigation route. Periodically, the mapping is updated and a new DVD will be required in order to maintain the latest navigation information available to us. These will be available for purchase from time to time at additional cost. For further information regarding any Volkswagen model, please call 1-800-DRIVE-VW, or just look us up at vw.com.